



Pioneer Energy Services

Microresistivity Log

15-051-26,346-00-00

API No.

Company **TDI, Inc.**

Well **Dinges Family #1**

Field **Wildcat**

County **Elilis** State

Kansas

Location **1425' FNL & 2310' FWL**

Sec: **8** Twp: **15 S** Rge: **19 W**

Permanent Datum **Ground Level** Elevation **2027**

Log Measured From **Kelly Bushing** **10 Ft. Above Perm. Datum**

Drilling Measured From **Kelly Bushing**

Other Services
CNL/CDL
DIL

Elevation
K.B. 2037
D.F. 2027
G.L. 2027

Date **9/09/2012**

Run Number **Two**

Depth Driller **3704**

Depth Logger **3703**

Bottom Logged Interval **3702**

Top Log Interval **2200**

Casing Driller **8.625 @ 213**

Casing Logger **212**

Bit Size **7.875**

Type Fluid in Hole **Chemical**

Salinity,ppm CL **4,200**

Density / Viscosity **9.2 59**

pH / Fluid Loss **10.5 7.8**

Source of Sample **Flowline**

Rm @ Meas. Temp **.70 @ 75**

Rmf @ Meas. Temp **.53 @ 75**

Rmc @ Meas. Temp **.95 @ 75**

Source of Rmf / Rmc **Charts**

Rm @ BHT **.46 @ 115**

Operating Rig Time **4 Hours**

Max Rec. Temp. F **115**

Equipment Number **91**

Location	1425' FNL & 2310' FWL
Sec: 8	Twp: 15 S Rge: 19 W
Permanent Datum	Ground Level Elevation 2027
Log Measured From	Kelly Bushing 10 Ft. Above Perm. Datum
Drilling Measured From	Kelly Bushing
Date	9/09/2012
Run Number	Two
Depth Driller	3704
Depth Logger	3703
Bottom Logged Interval	3702
Top Log Interval	2200
Casing Driller	8.625 @ 213
Casing Logger	212
Bit Size	7.875
Type Fluid in Hole	Chemical
Salinity,ppm CL	4,200
Density / Viscosity	9.2 59
pH / Fluid Loss	10.5 7.8
Source of Sample	Flowline
Rm @ Meas. Temp	.70 @ 75
Rmf @ Meas. Temp	.53 @ 75
Rmc @ Meas. Temp	.95 @ 75
Source of Rmf / Rmc	Charts
Rm @ BHT	.46 @ 115
Operating Rig Time	4 Hours
Max Rec. Temp. F	115
Equipment Number	91
Location	Hays
Recorded By	K. Bange
Witnessed By	Tom Denning

<<< Fold Here >>>

All interpretations are opinions based on inferences from electrical or other measurements and we cannot and do not guarantee the accuracy or correctness of any interpretation, and we shall not, except in the case of gross or willful negligence on our part, be liable or responsible for any loss, costs, damages, or expenses incurred or sustained by anyone resulting from any interpretation made by any of our officers, agents or employees. These interpretations are also subject to our general terms and conditions set out in our current Price Schedule.

Comments

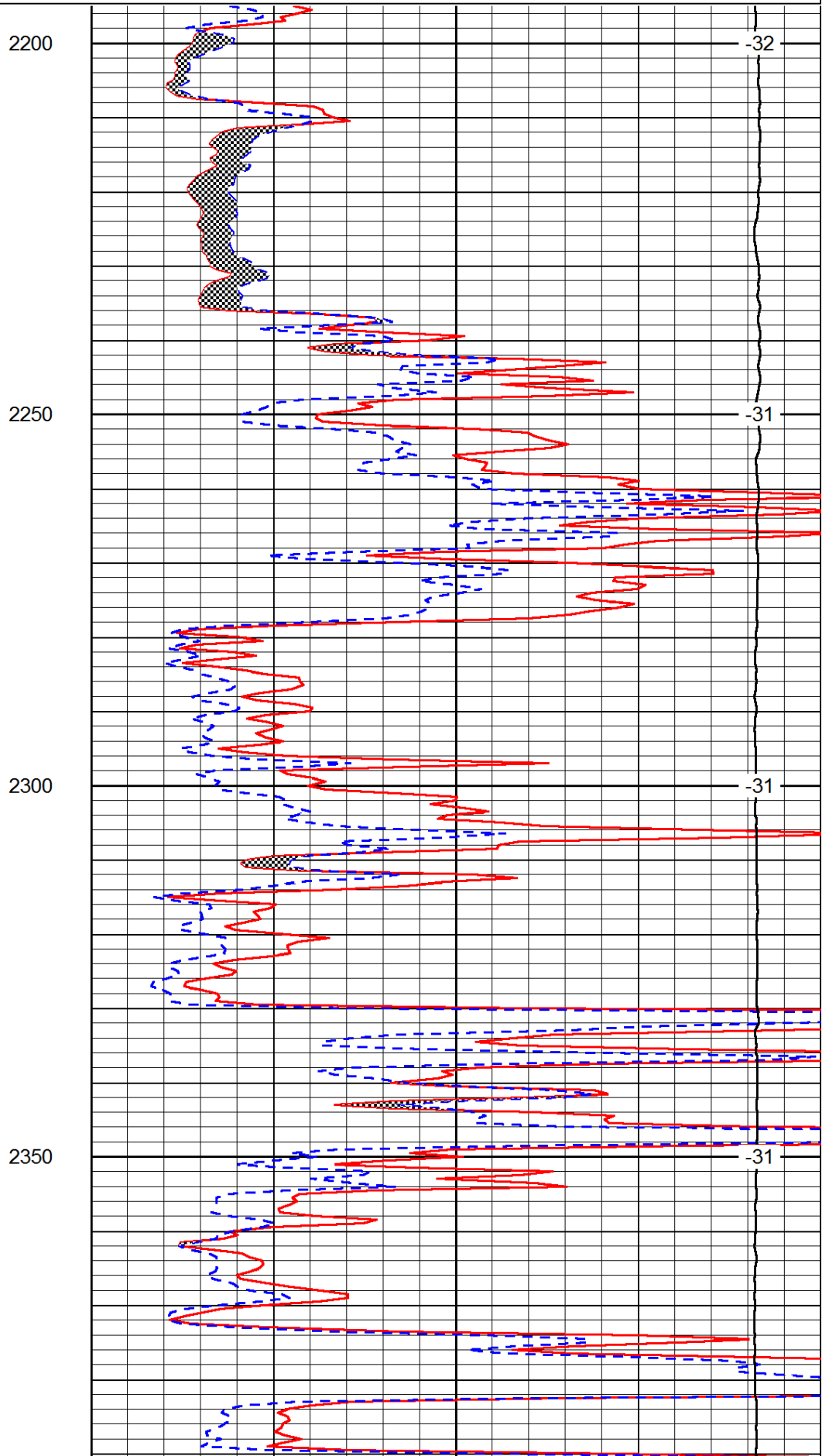
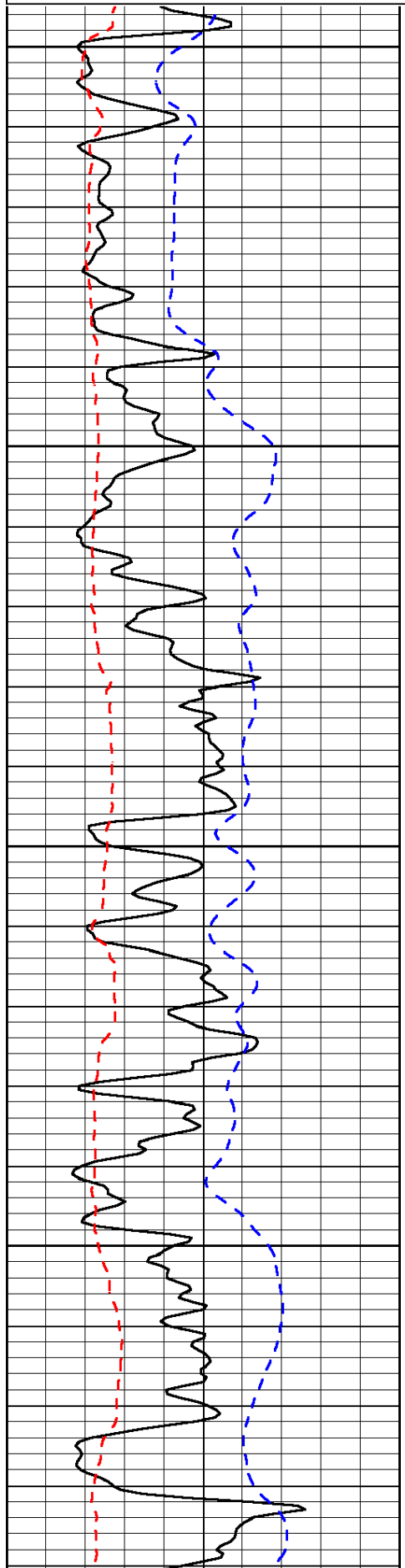
Thank you for using Pioneer Energy Services
www.pioneerres.com
785 625 3858
Antonino, 3 W,
1 S, 1/2 W,
S into

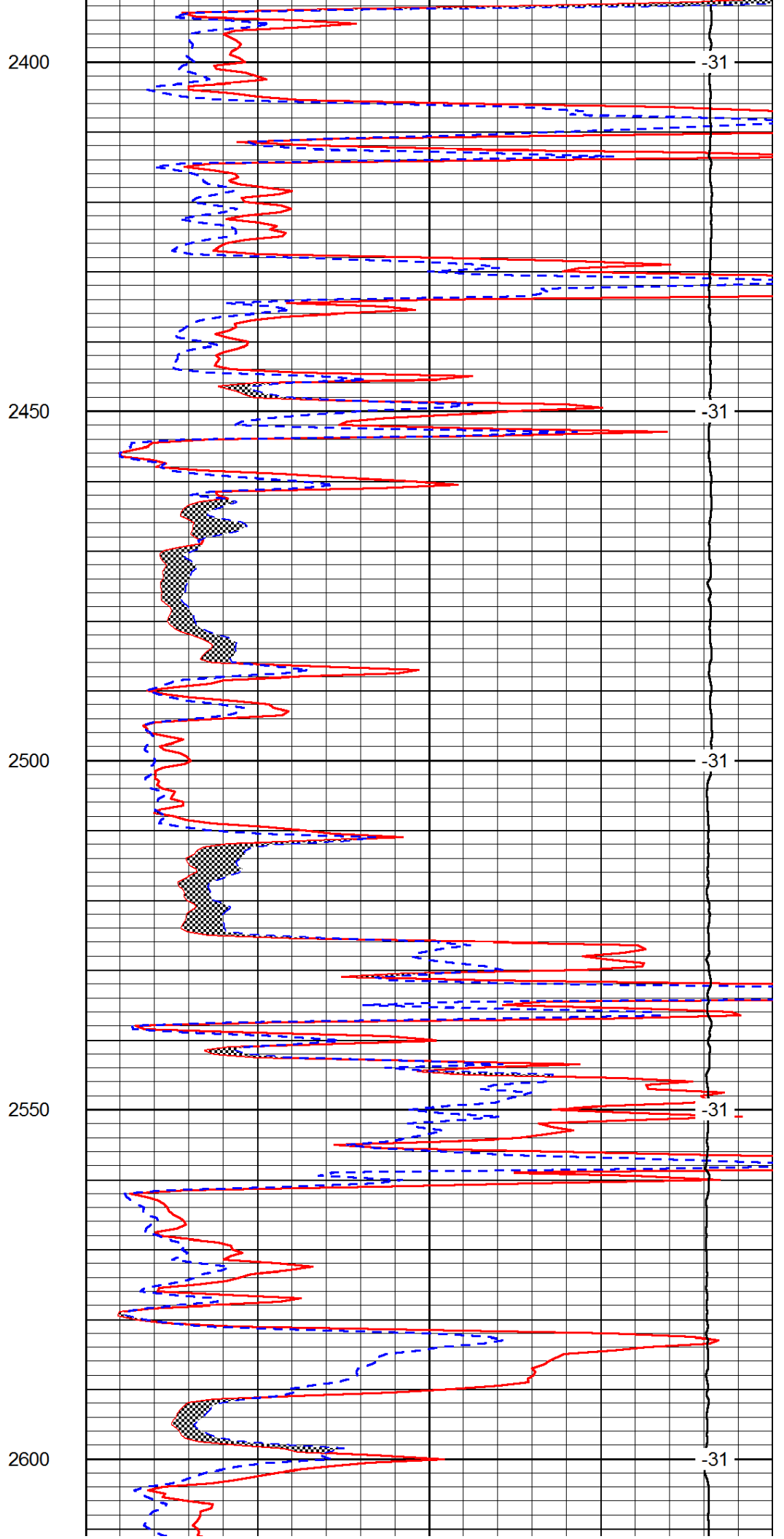
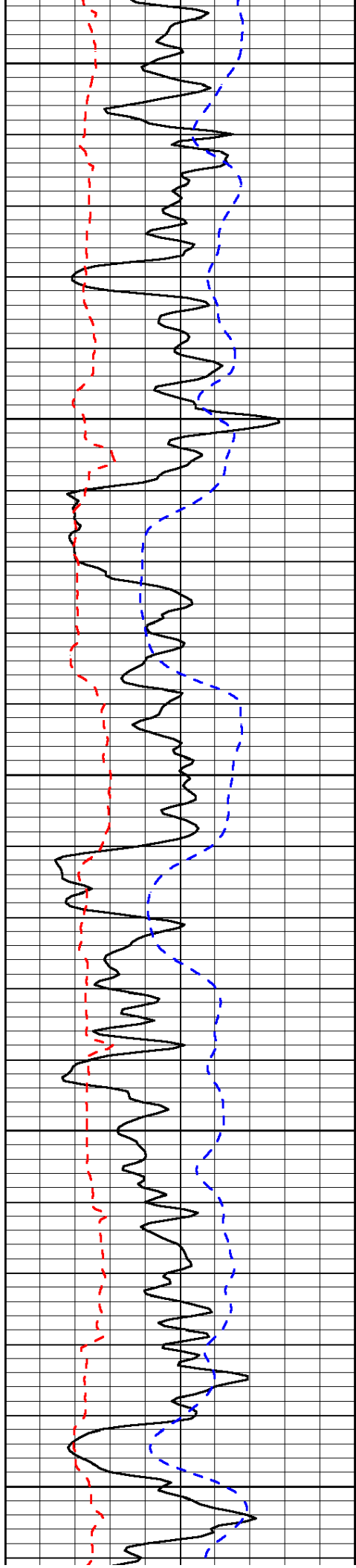
Database File: c:\warrior\data\tdi_dinges family #1\tdi090912hd.db
Dataset Pathname: dil\tdistack
Presentation Format: micro
Dataset Creation: Mon Sep 10 02:11:02 2012
Charted by: Depth in Feet scaled 1:240

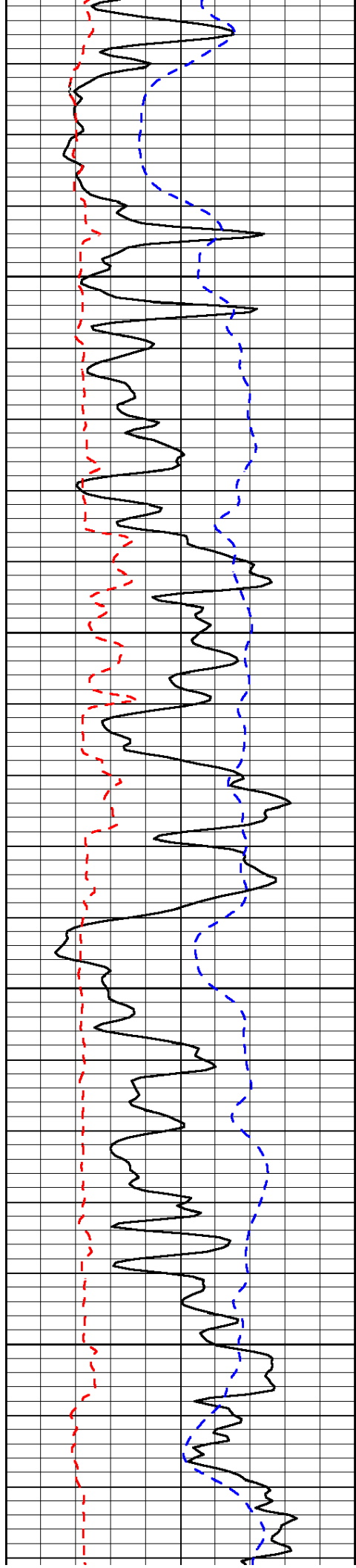
0	Gamma Ray	150
6	Micro Log Caliper (GAPI)	16
-200	SP (mV)	0

0	Micro Inverse 1 X 1	40
0	Micro Normal 2"	40
15000	Line Weight	0

LSPD





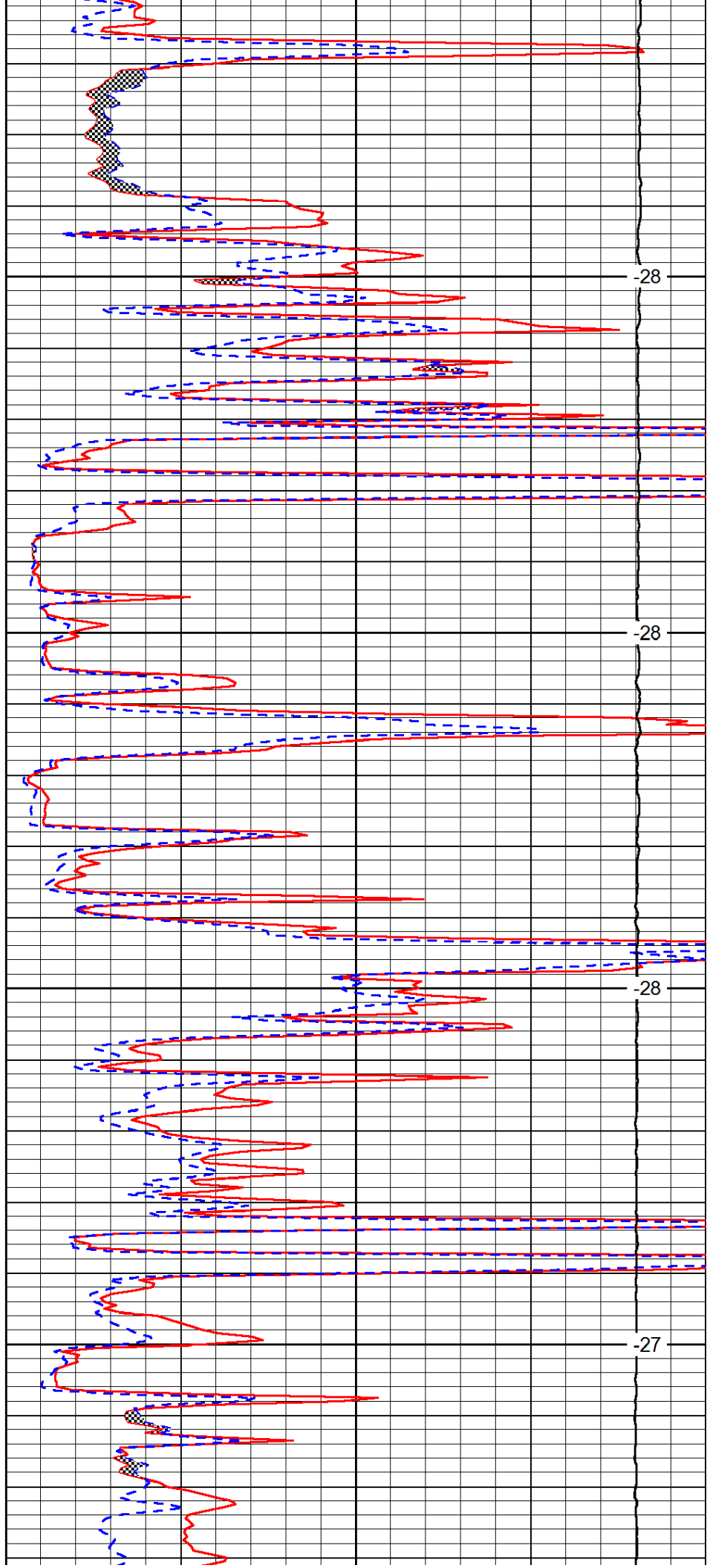


2650

2700

2750

2800

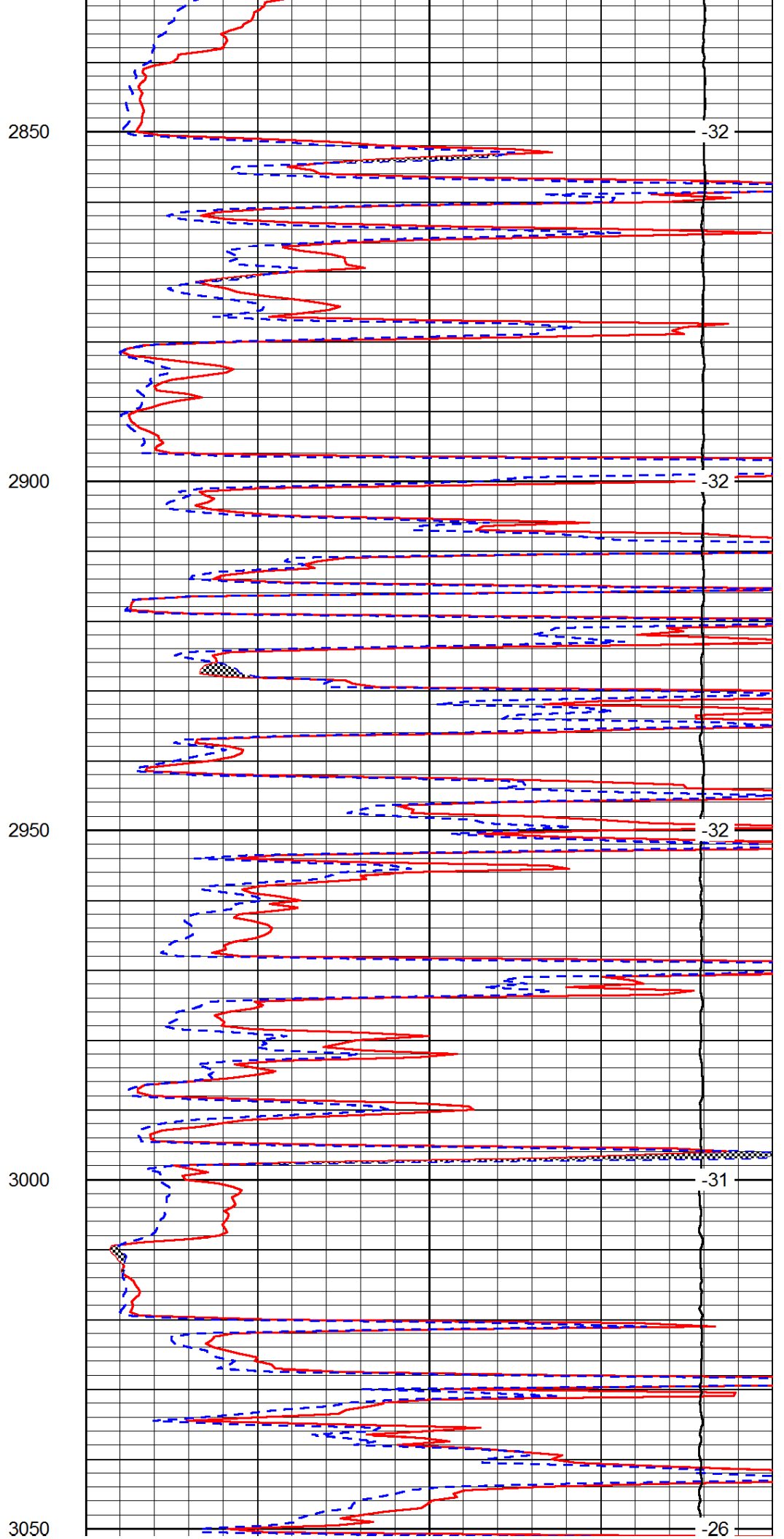
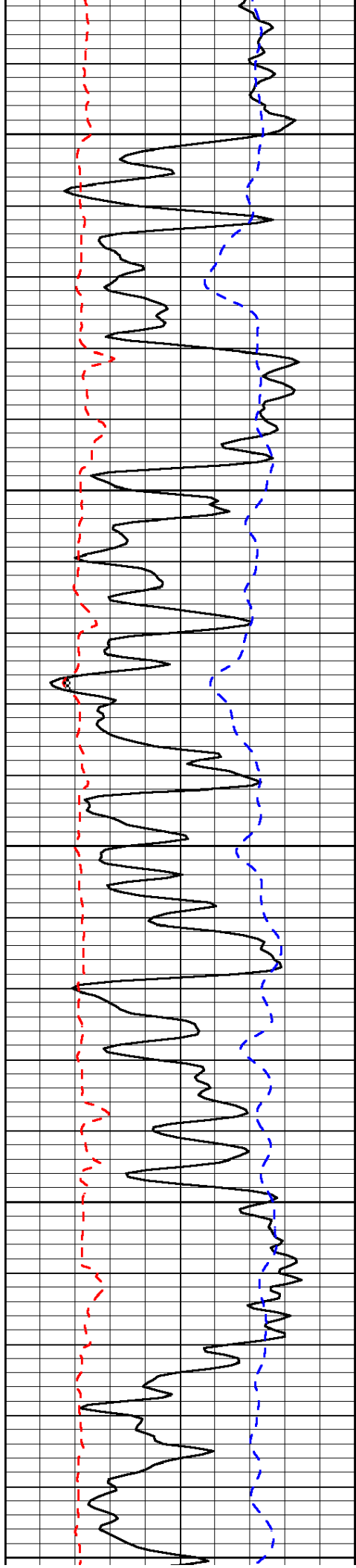


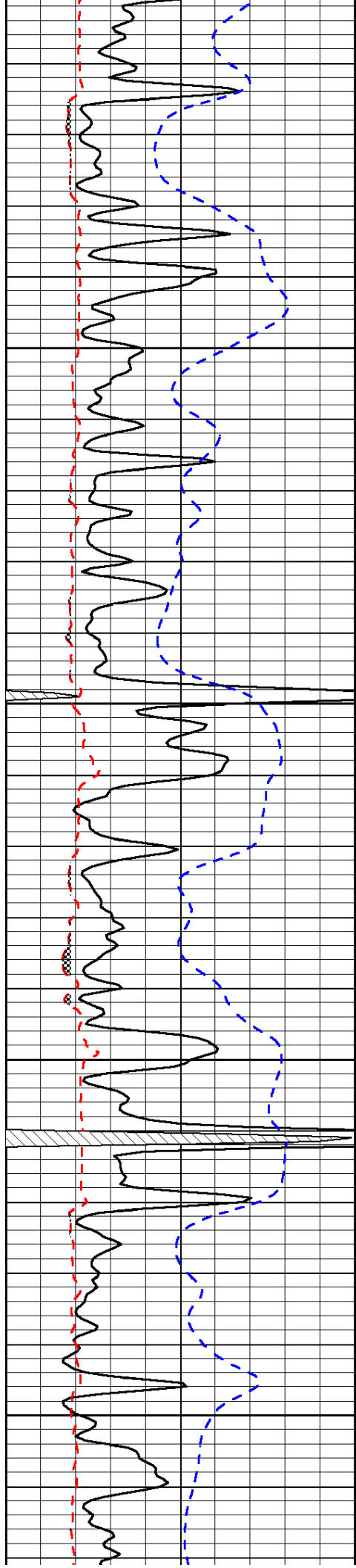
-28

-28

-28

-27



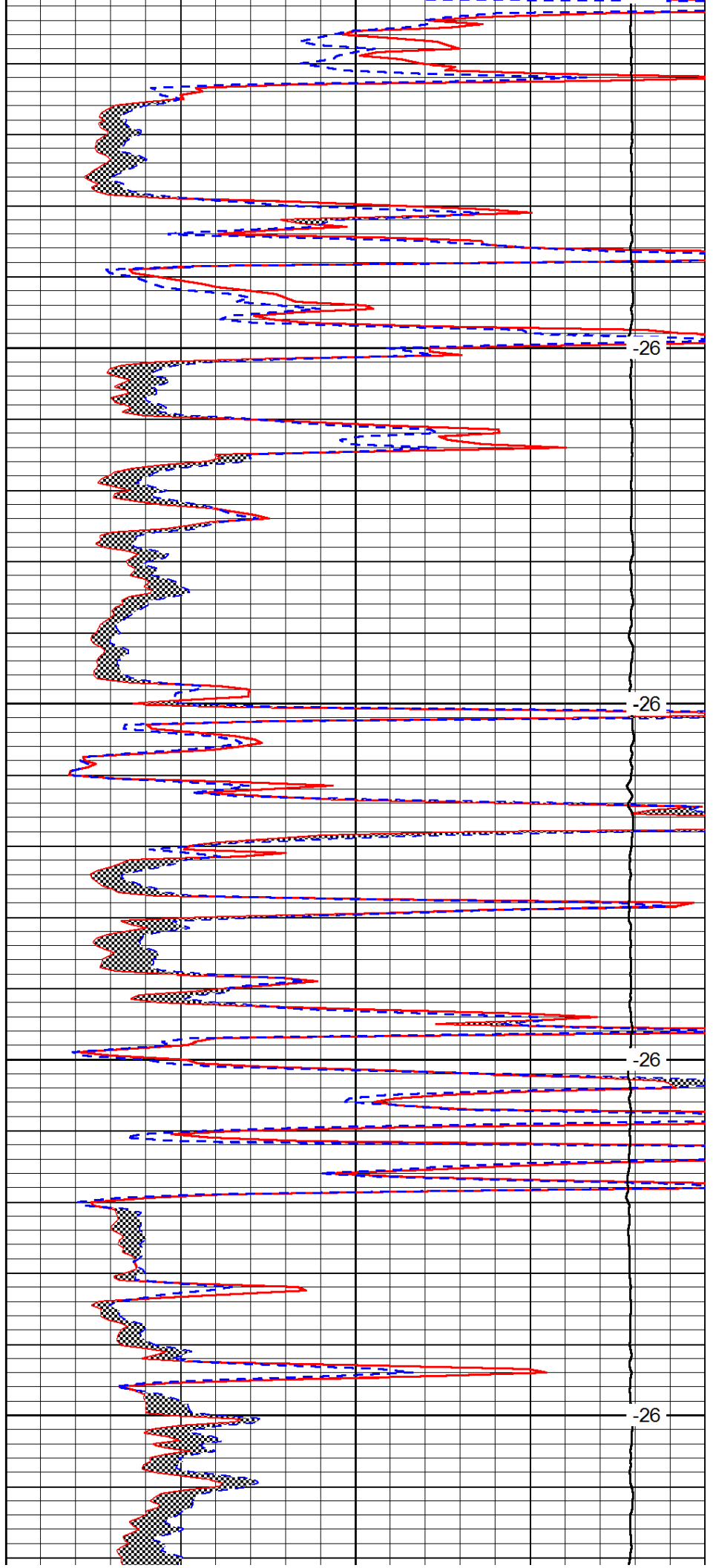


3100

3150

3200

3250

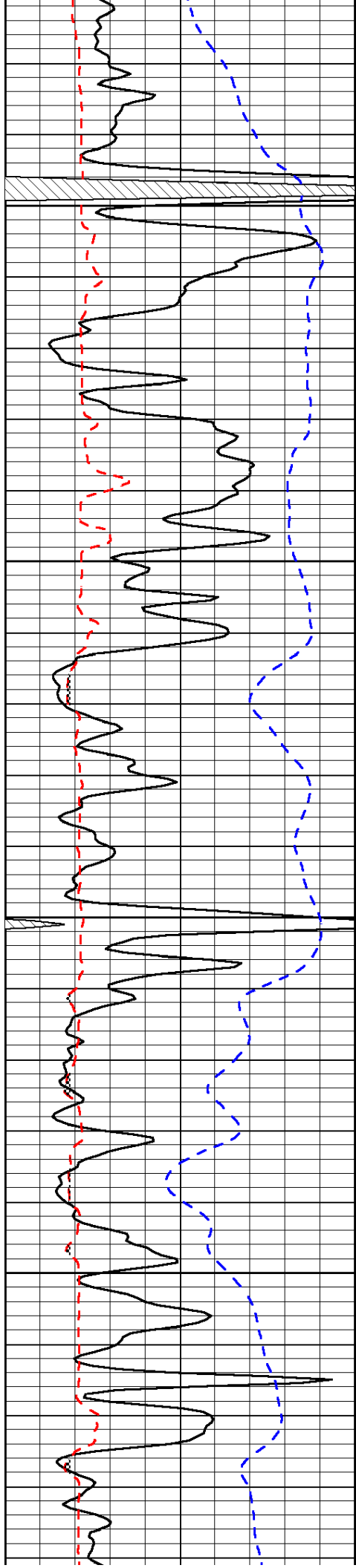


-26

-26

-26

-26

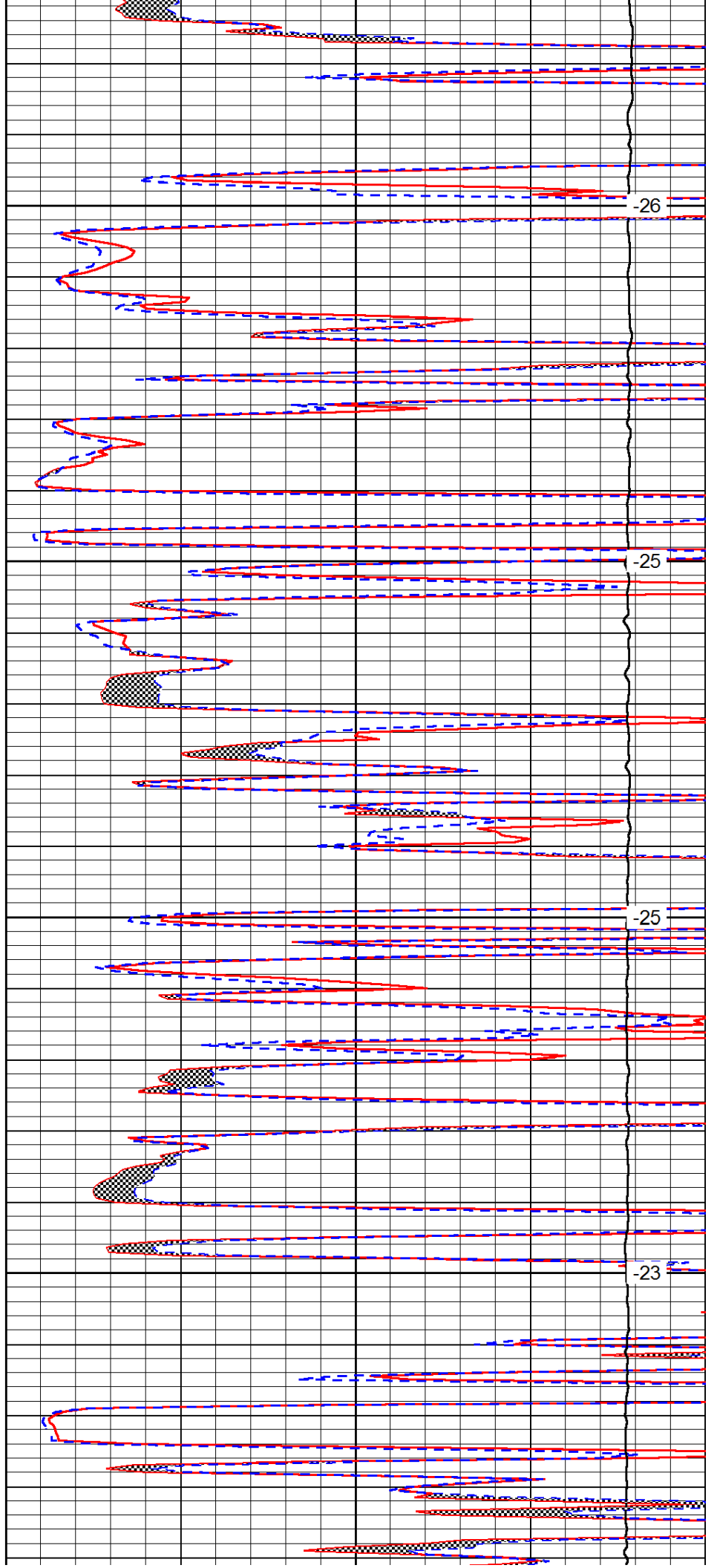


3300

3350

3400

3450

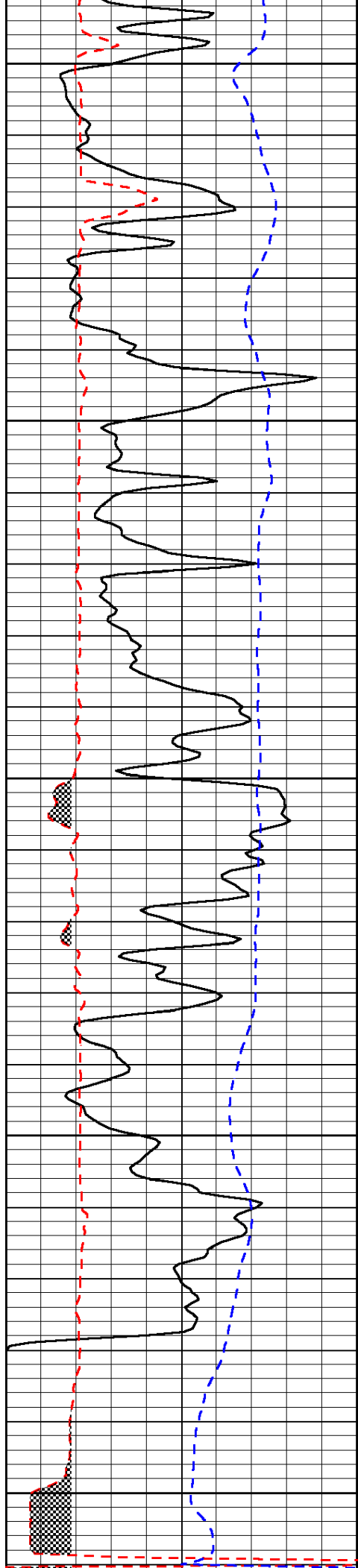


-26

-25

-25

-23



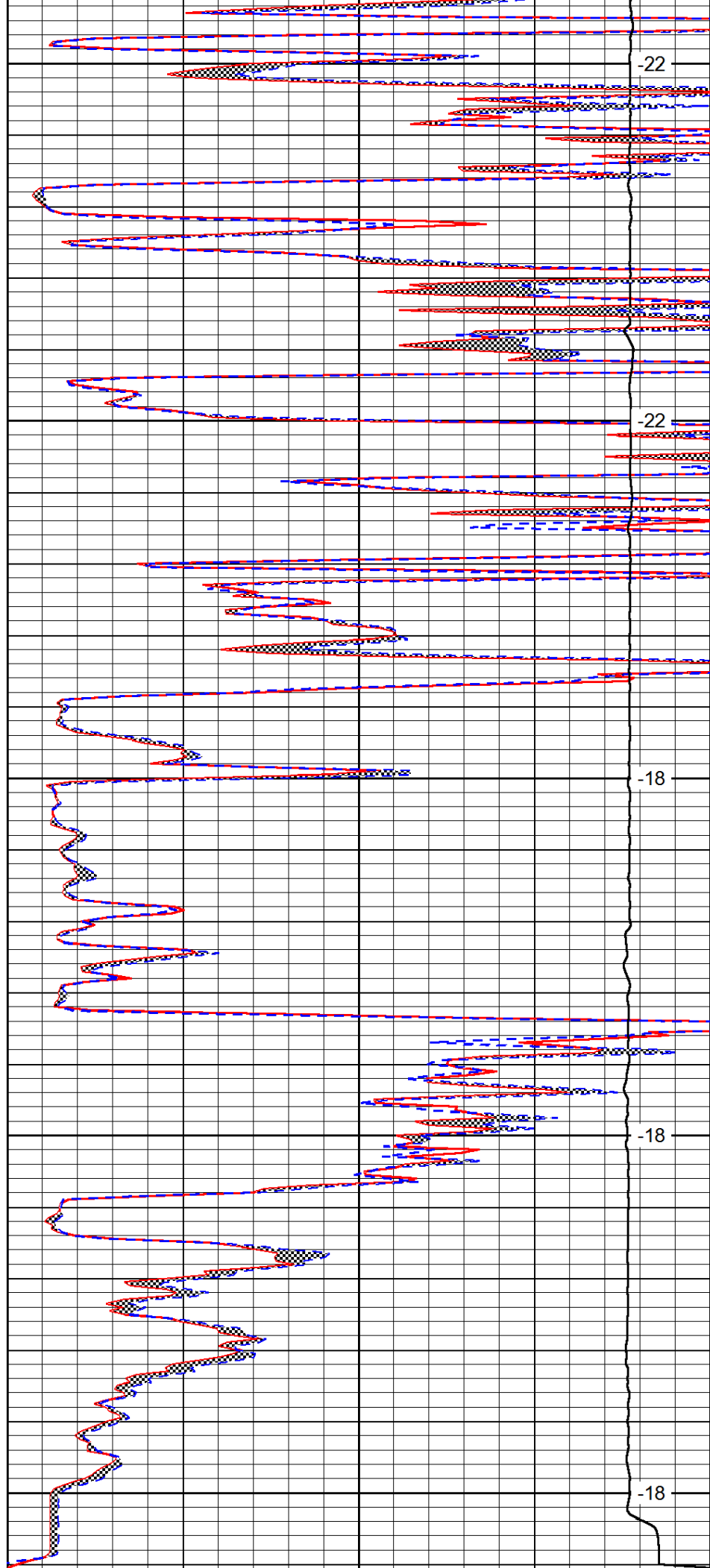
3500

3550

3600

3650

3700



-22

-22

-18

-18

-18

0	Gamma Ray	150
6	Micro Log Caliper (GAPI)	16
-200	SP (mV)	0

0	Micro Inverse 1 X 1	40
0	Micro Normal 2"	40
15000	Line Weight	0

LSPD