



Dual Compensated Porosity Log

DIGITAL LOG (785) 625-3858

API No. 15-007-23570-00-00

Company **Beren Corporation**
 Well **Dean No. 5**
 Field **Roundup South**
 County **Barber** State **Kansas**

Location **N/2 - S/2 - SE - SE
340' FSL & 660' FEL**

Sec: **35** Twp: **33 S** Rge: **11 W**

Other Services
DIL/MEL

Permanent Datum **Ground Level** Elevation **1445**
 Log Measured From **Kelly Bushing** 13 Ft. Above Perm. Datum
 Drilling Measured From **Kelly Bushing**

Elevation
K.B. 1458
D.F. 1445
G.L. 1445

Date **8/11/2010**

Run Number **One**

Type Log **CNL / CDL**

Depth Driller **5120**

Depth Logger **5117**

Bottom Logged Interval **5096**

Top Logged Interval **3400**

Type Fluid In Hole **Chemical**

Salinity, PPM CL **9,500**

Density **9.4**

Level **Full**

Max. Rec. Temp. F **127**

Operating Rig Time **4 Hours**

Equipment -- Location **15 Hays**

Recorded By **B. Becker**

Witnessed By **Jim Hickman**

Borehole Record				Casing Record			
Run No	Bit	From	To	Size	Wgt.	From	To
One	17.5	00	431	13.375	48#	00	431
Two	7.875	431	TD				

<<< Fold Here >>>

All interpretations are opinions based on inferences from electrical or other measurements and we cannot and do not guarantee the accuracy or correctness of any interpretation, and we shall not, except in the case of gross or willful negligence on our part, be liable or responsible for any loss, costs, damages, or expenses incurred or sustained by anyone resulting from any interpretation made by any of our officers, agents or employees. These interpretations are also subject to our general terms and conditions set out in our current Price Schedule.

Comments

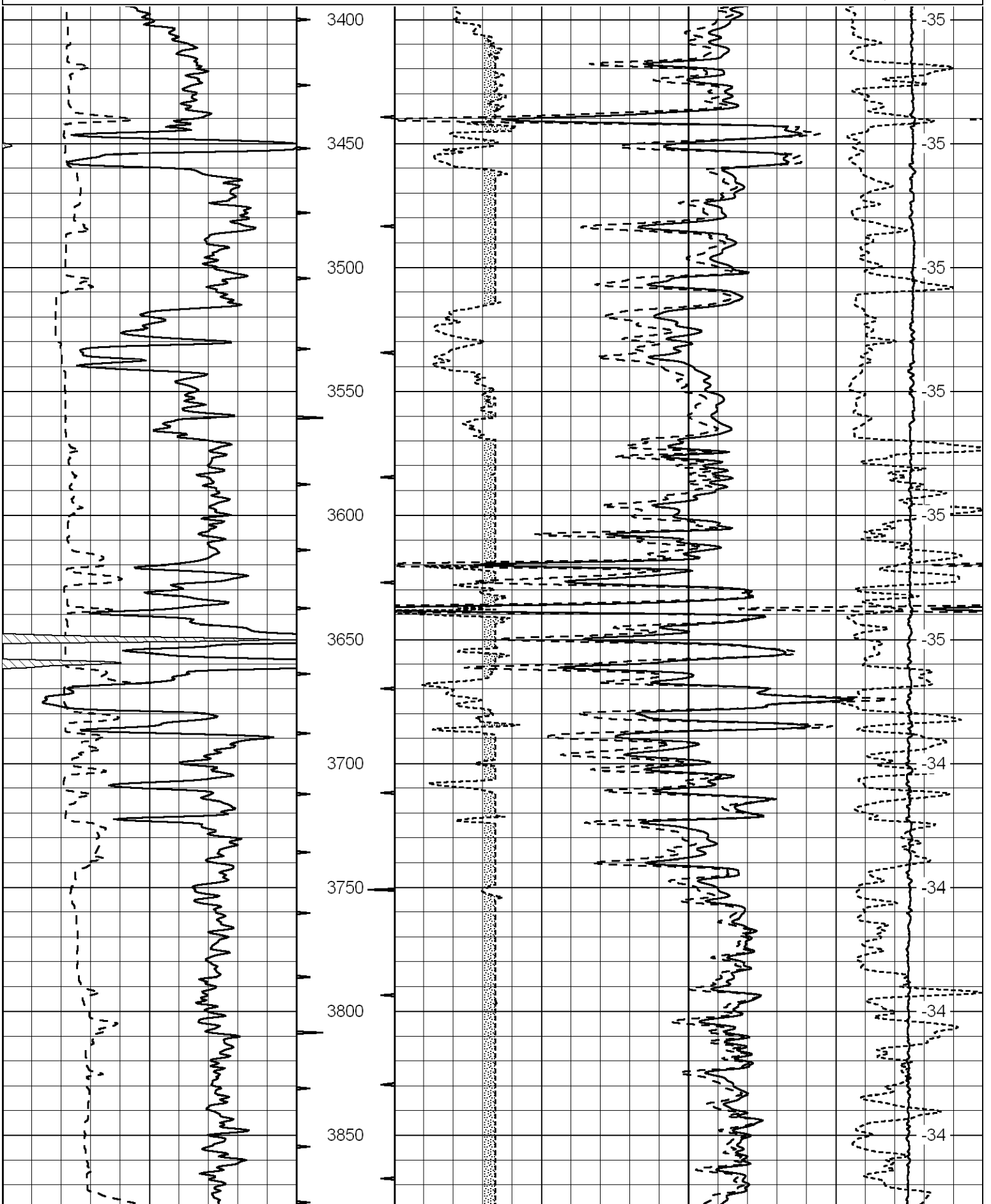
Thank you for using Log-Tech, Inc.
 (785) 625-3858

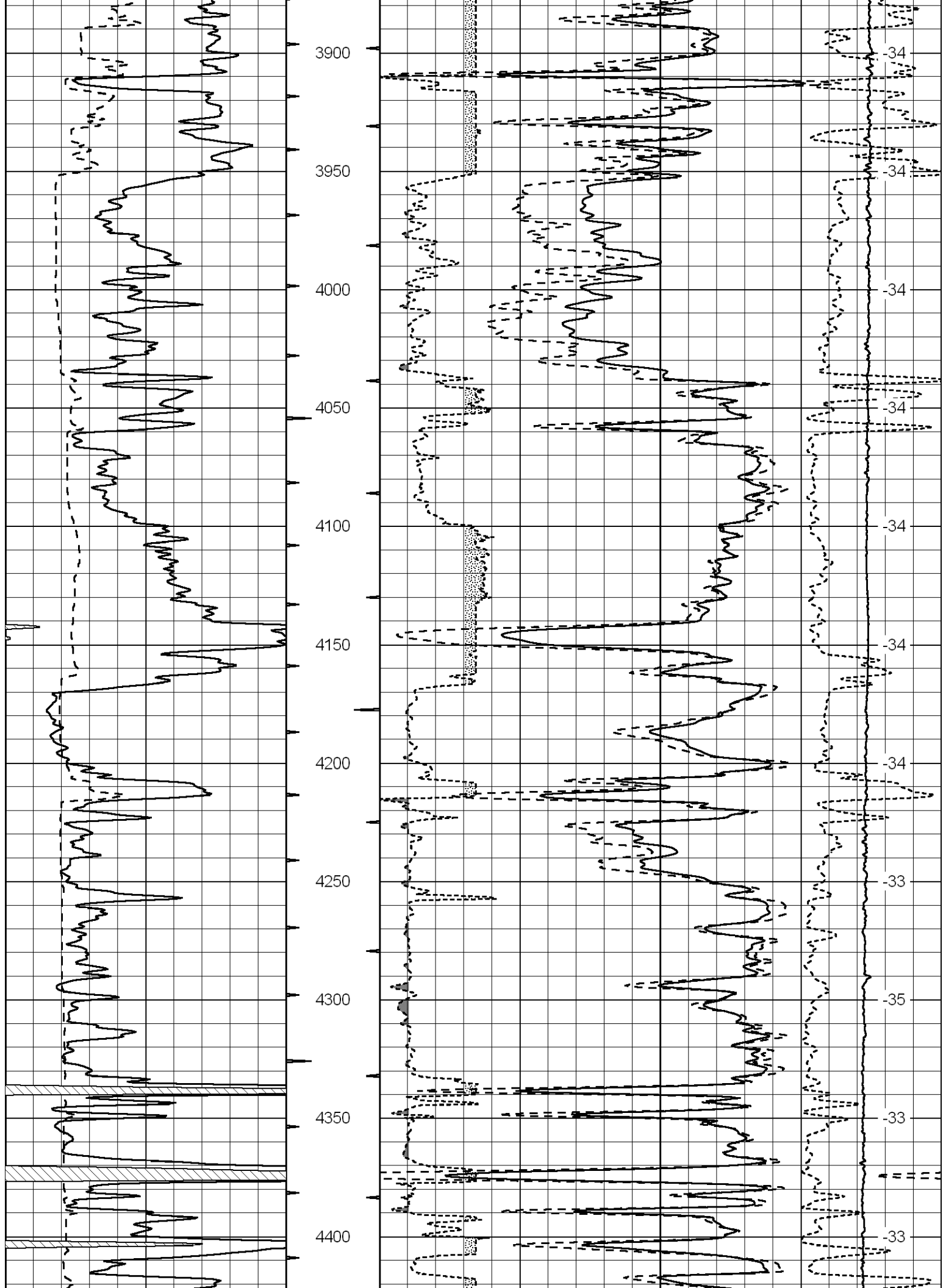
Medicine Lodge, Ks;
 South on 281 Hwy to Gerlane Rd;
 7.1 Mi East; North Into

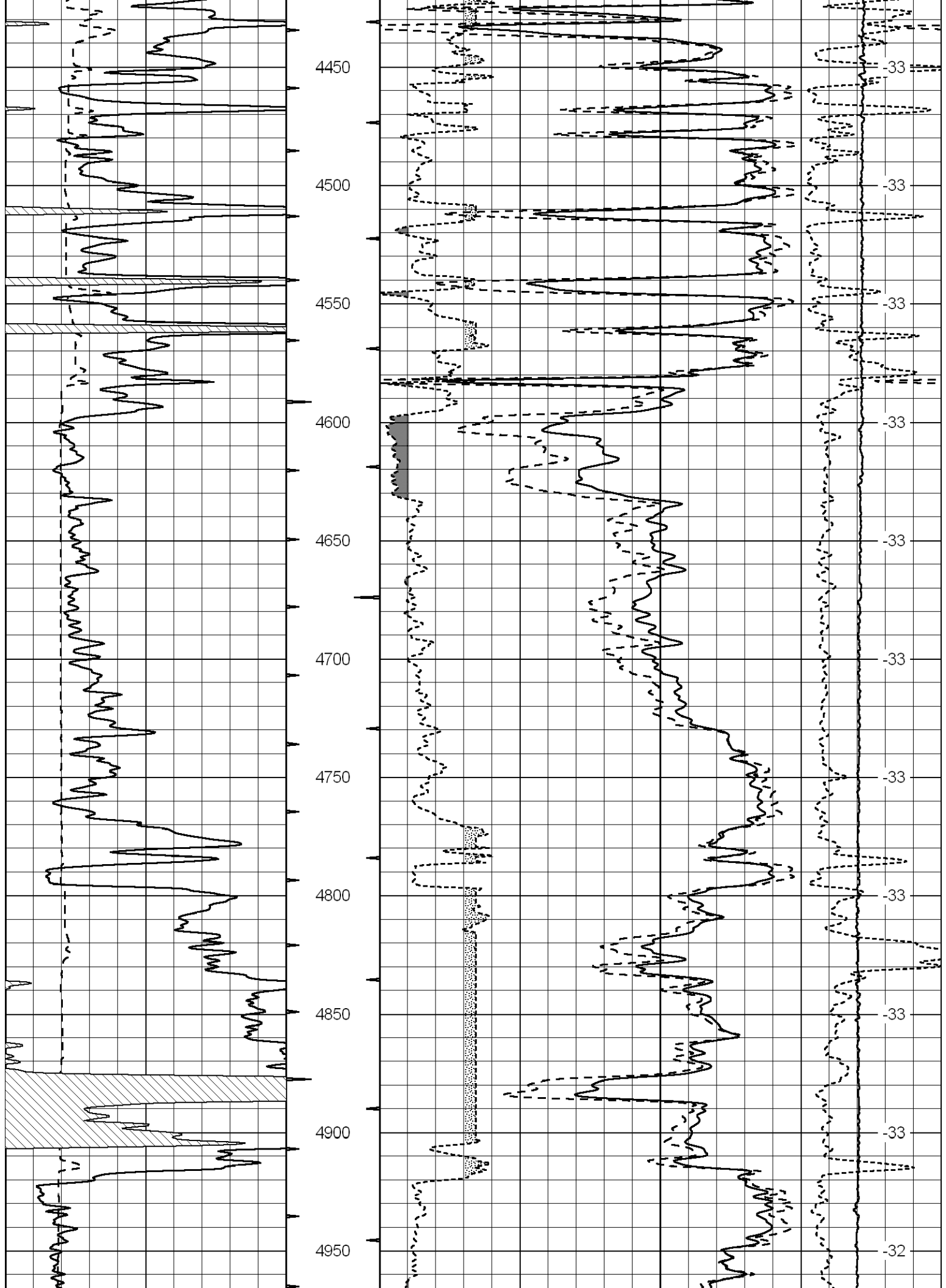
Database File: berenhd.db
 Dataset Pathname: DIL/berstk
 Presentation Format: cdl
 Dataset Creation: Wed Aug 11 11:28:58 2010
 Charted by: Depth in Feet scaled 1:600

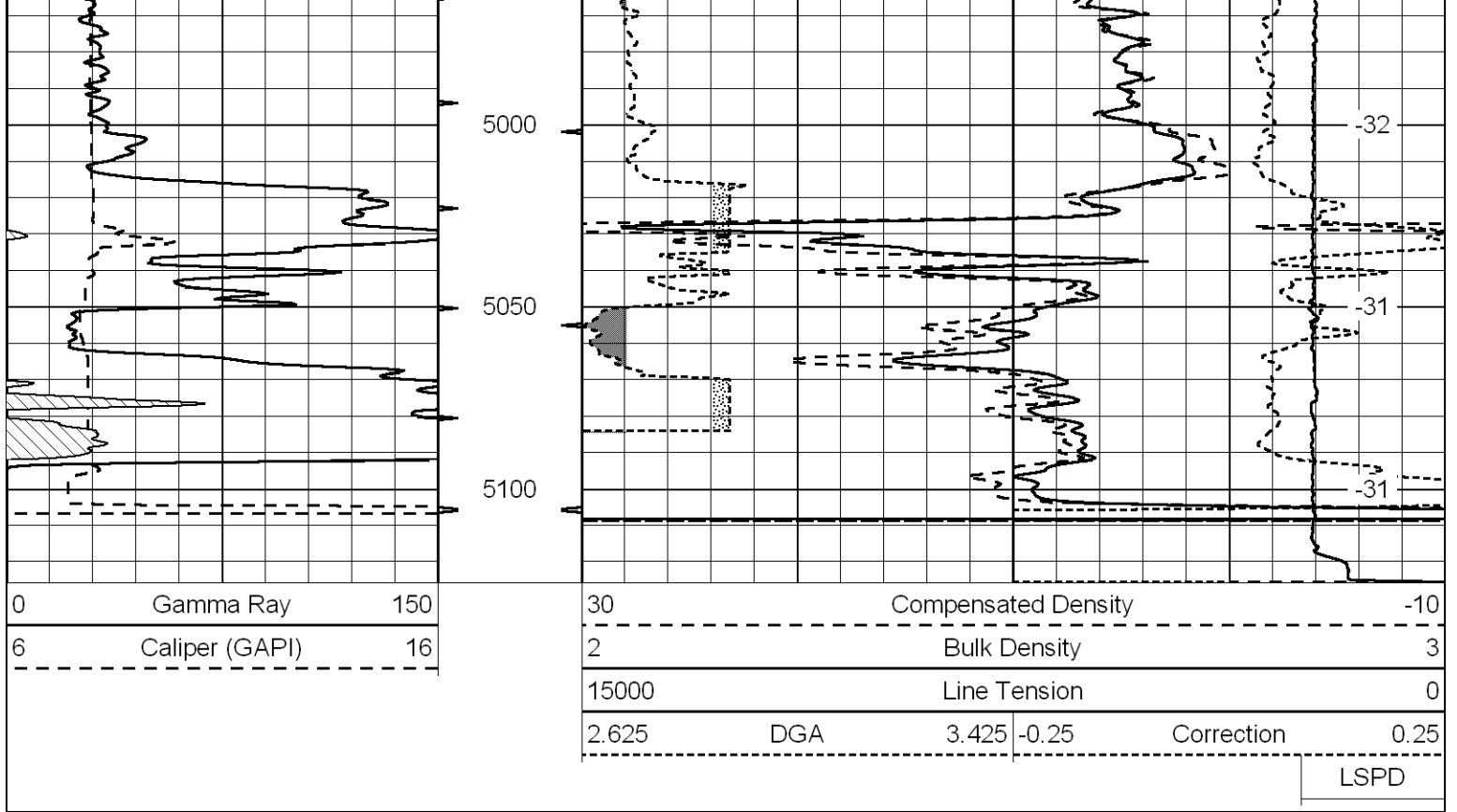
0	Gamma Ray	150
6	Caliper (GAPI)	16

30	Compensated Density		-10
2	Bulk Density		3
15000	Line Tension		0
2.625	DGA	3.425	-0.25
Correction			0.25
LSPD			









Database File: berenhd.db
 Dataset Pathname: DIL/berstk
 Presentation Format: cndlspec
 Dataset Creation: Wed Aug 11 11:28:58 2010
 Charted by: Depth in Feet scaled 1:240

