



Microresistivity Log

DIGITAL LOG (785) 625-3858

API No.	15-007-23570-00-00		
Company	Beren Corporation		
Well	Dean No. 5		
Field	Roundup South		
County	Barber	State	Kansas
Location	N/2 - S/2 - SE - SE 340' FSL & 660' FEL		
Sec: 35	Twp: 33 S	Rge: 11 W	Elevation CNL/CDL DIL
Permanent Datum	Ground Level	Elevation 1445	K.B. 1458
Log Measured From	Kelly Bushing	13 Ft. Above Perm. Datum	D.F. 1445
Drilling Measured From	Kelly Bushing		G.L. 1445

Date	8/11/2010	
Run Number	Two	
Depth Driller	5120	
Depth Logger	5117	
Bottom Logged Interval	5116	
Top Log Interval	3400	
Casing Driller	13.375 @ 431	
Casing Logger	426	
Bit Size	7.875	
Type Fluid in Hole	Chemical	
Salinity, ppm CL	9.500	
Density / Viscosity	9.4	49
pH / Fluid Loss	9.0	12.8
Source of Sample	Flowline	
Rm @ Meas. Temp	0.85 @ 80	
Rmf @ Meas. Temp	0.64 @ 80	
Rmc @ Meas. Temp	1.15 @ 80	
Source of Rmf / Rmc	Charts	
Rm @ BHT	0.53 @ 127	
Operating Rig Time	4 Hours	
Max Rec. Temp. F	127	
Equipment Number	15	
Location	Hays	
Recorded By	B. Becker	
Witnessed By	Jim Hickman	

<<< Fold Here >>>

All interpretations are opinions based on inferences from electrical or other measurements and we cannot and do not guarantee the accuracy or correctness of any interpretation, and we shall not, except in the case of gross or willful negligence on our part, be liable or responsible for any loss, costs, damages, or expenses incurred or sustained by anyone resulting from any interpretation made by any of our officers, agents or employees. These interpretations are also subject to our general terms and conditions set out in our current Price Schedule.

Comments

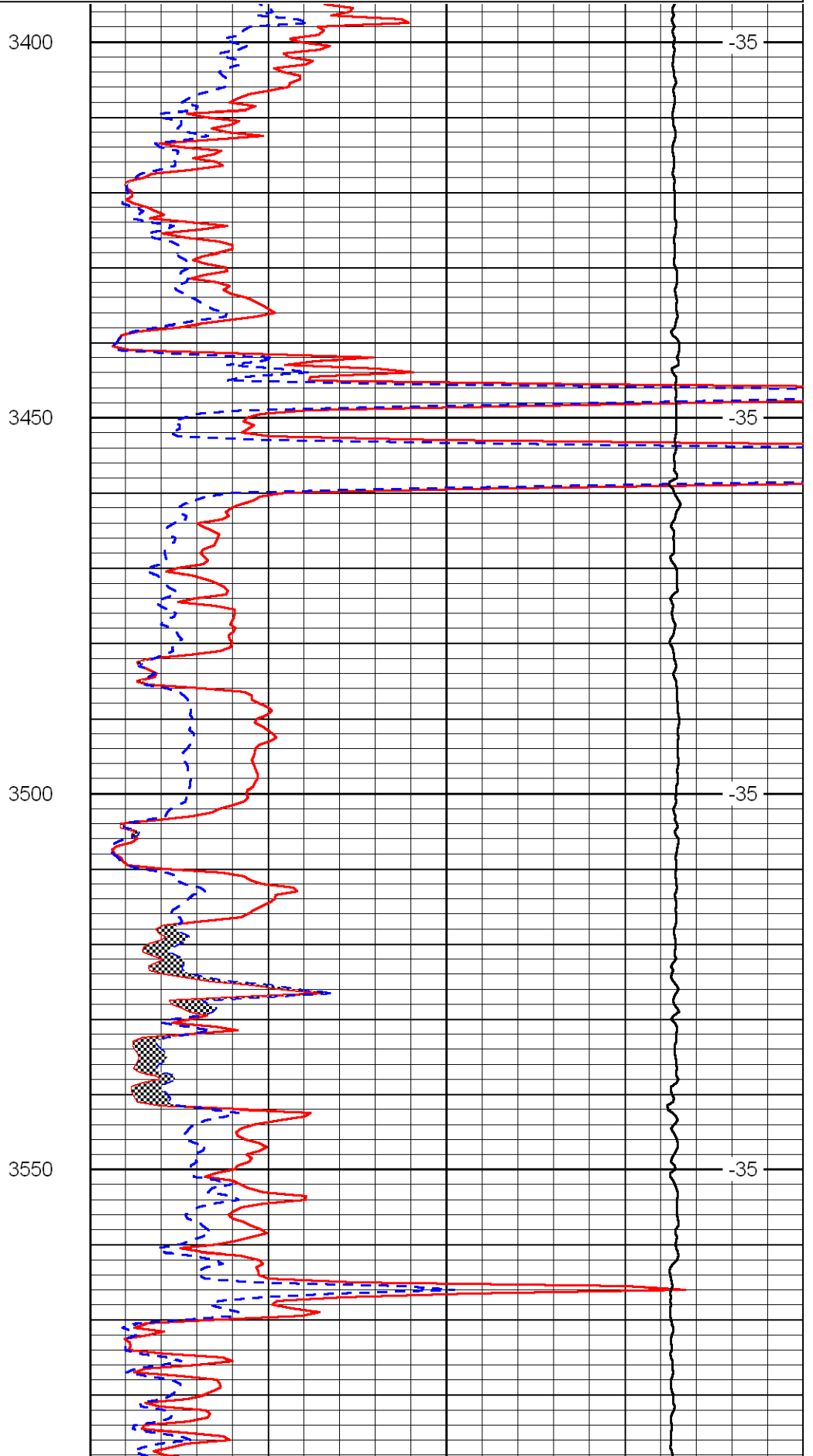
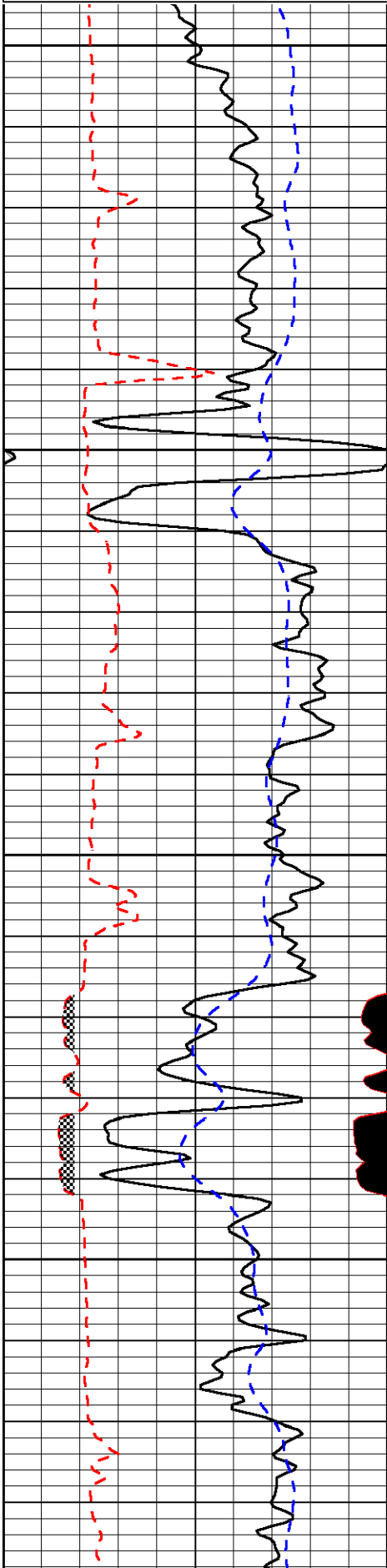
Thank you for using Log-Tech, Inc.
(785) 625-3858

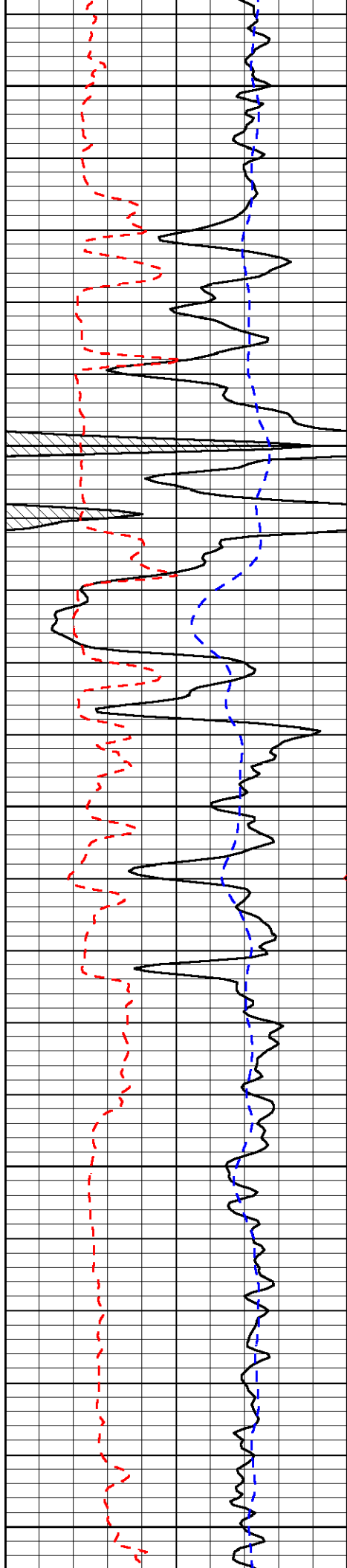
Medicine Lodge, Ks;
South on 281 Hwy to Gerlane Rd;
7.1 Mi East; North Into

Database File: berenhd.db
 Dataset Pathname: DIL/berstk
 Presentation Format: micro
 Dataset Creation: Wed Aug 11 11:28:58 2010
 Charted by: Depth in Feet scaled 1:240

0	Gamma Ray	150
6	MCAL (GAPI)	16
2.875	Mud Cake (GAPI)	7.875
-200	SP	0

0	Micro Inverse 1 X 1	40
0	Micro Normal 2"	40
10000	Line Weight	0
		LSPD





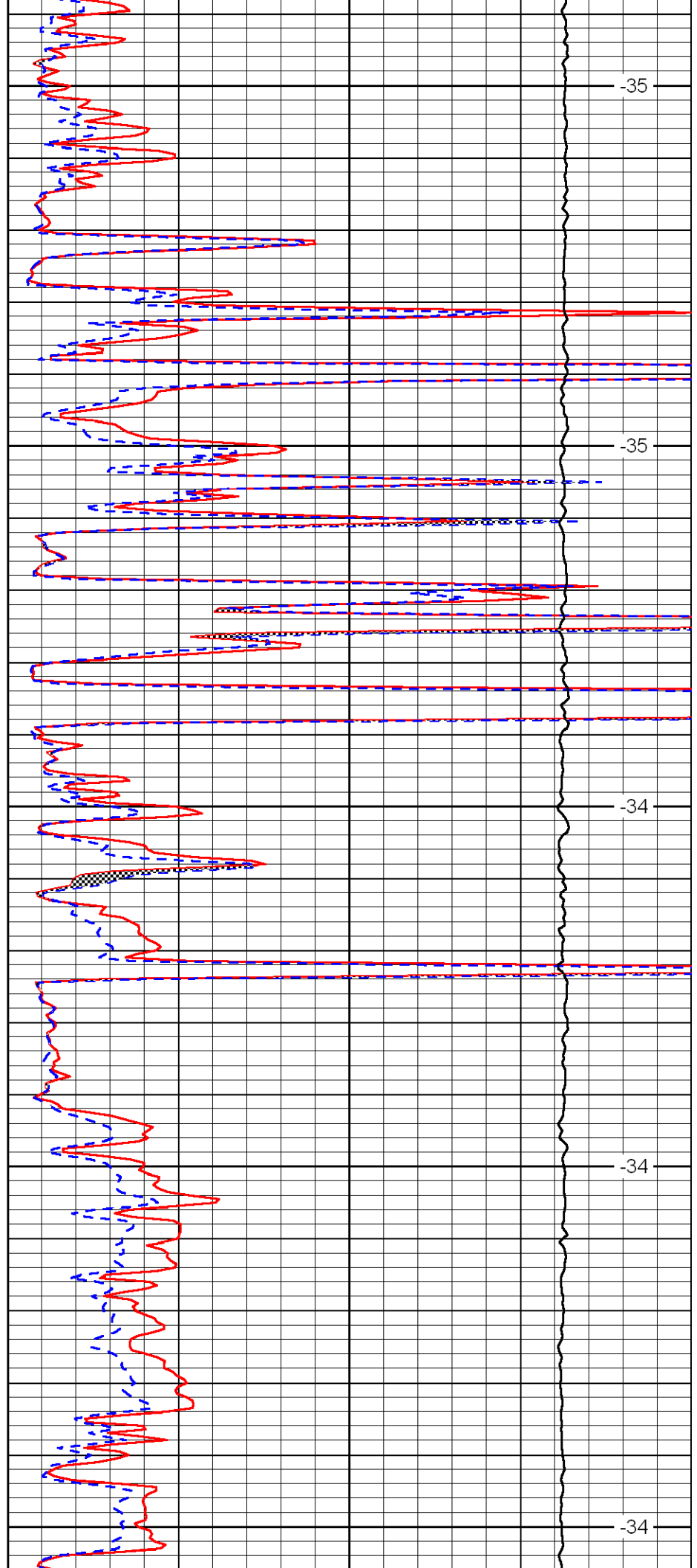
3600

3650

3700

3750

3800



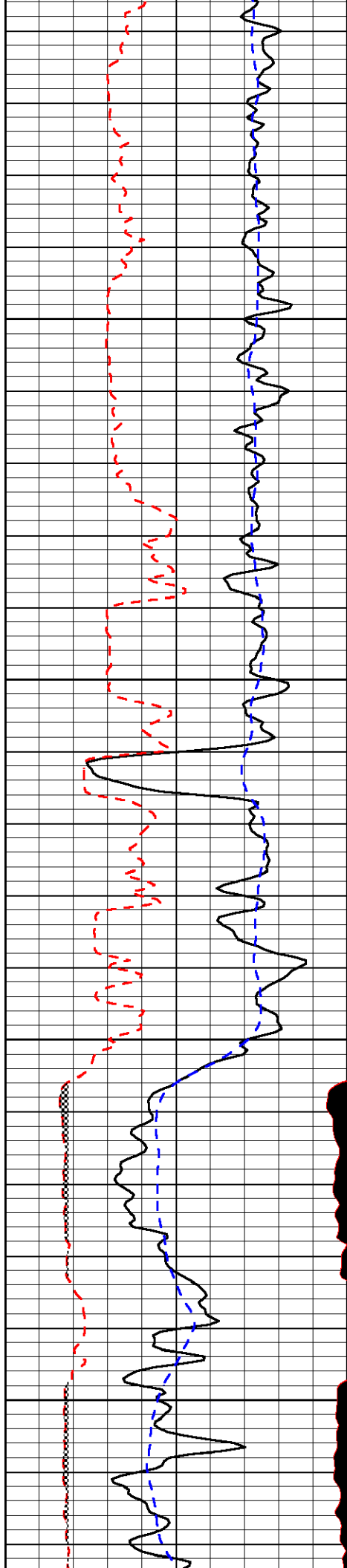
-35

-35

-34

-34

-34

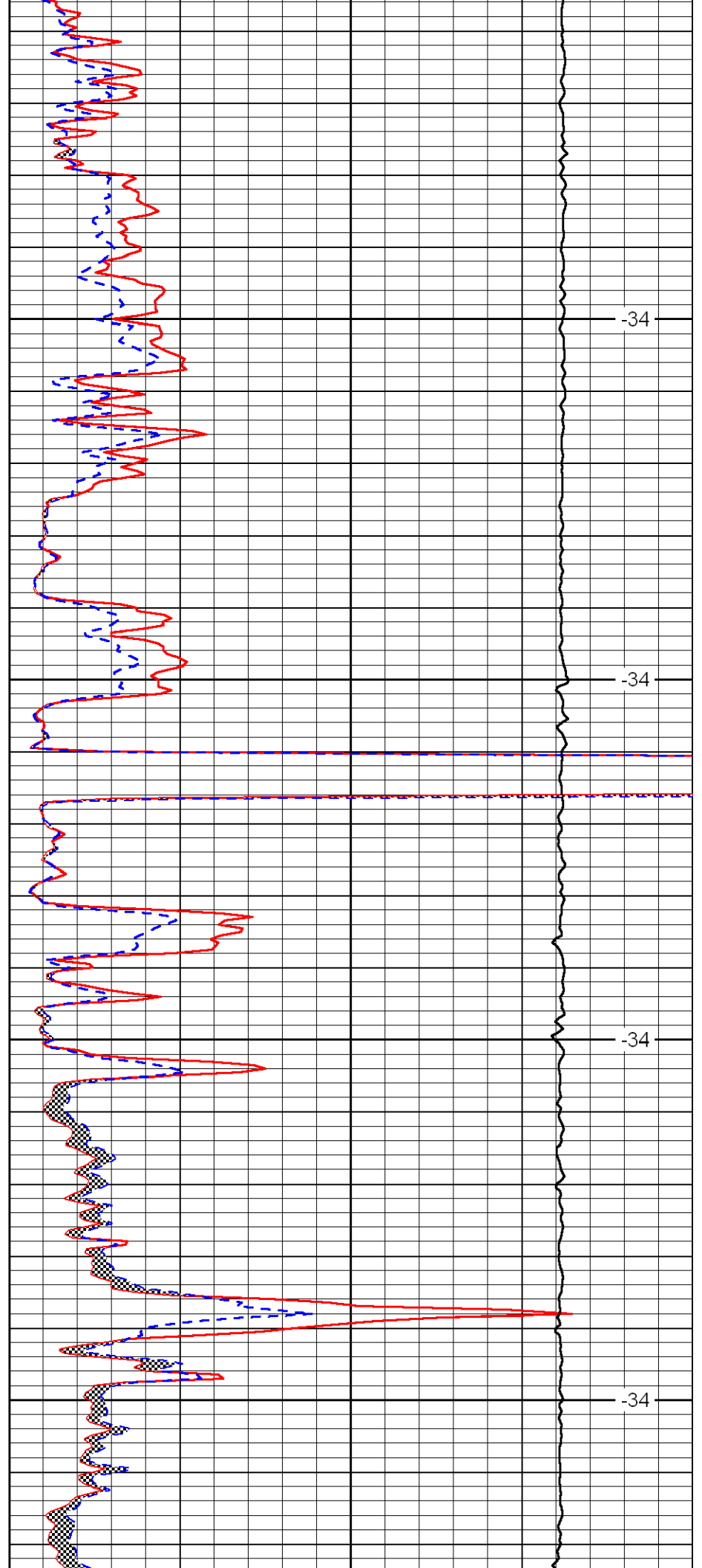


3850

3900

3950

4000

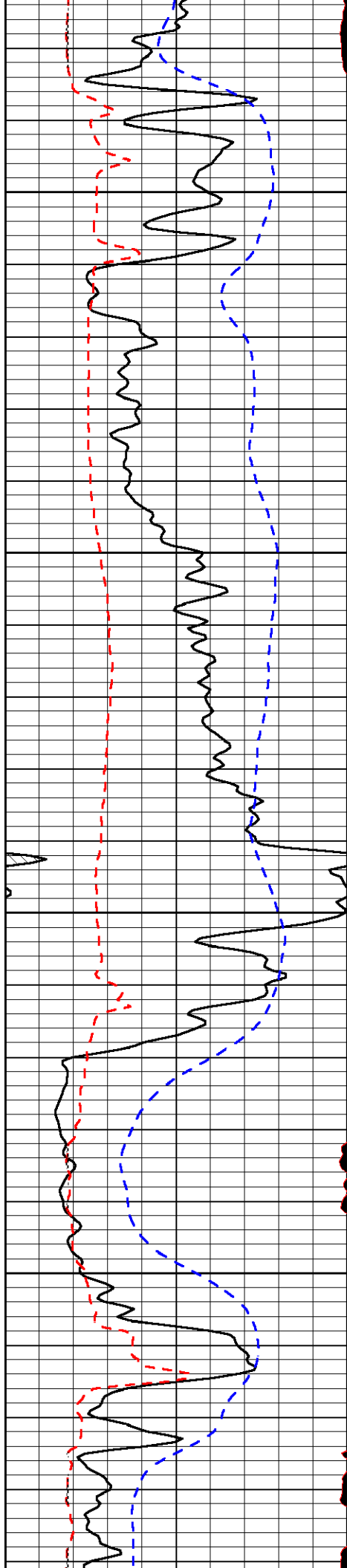


-34

-34

-34

-34

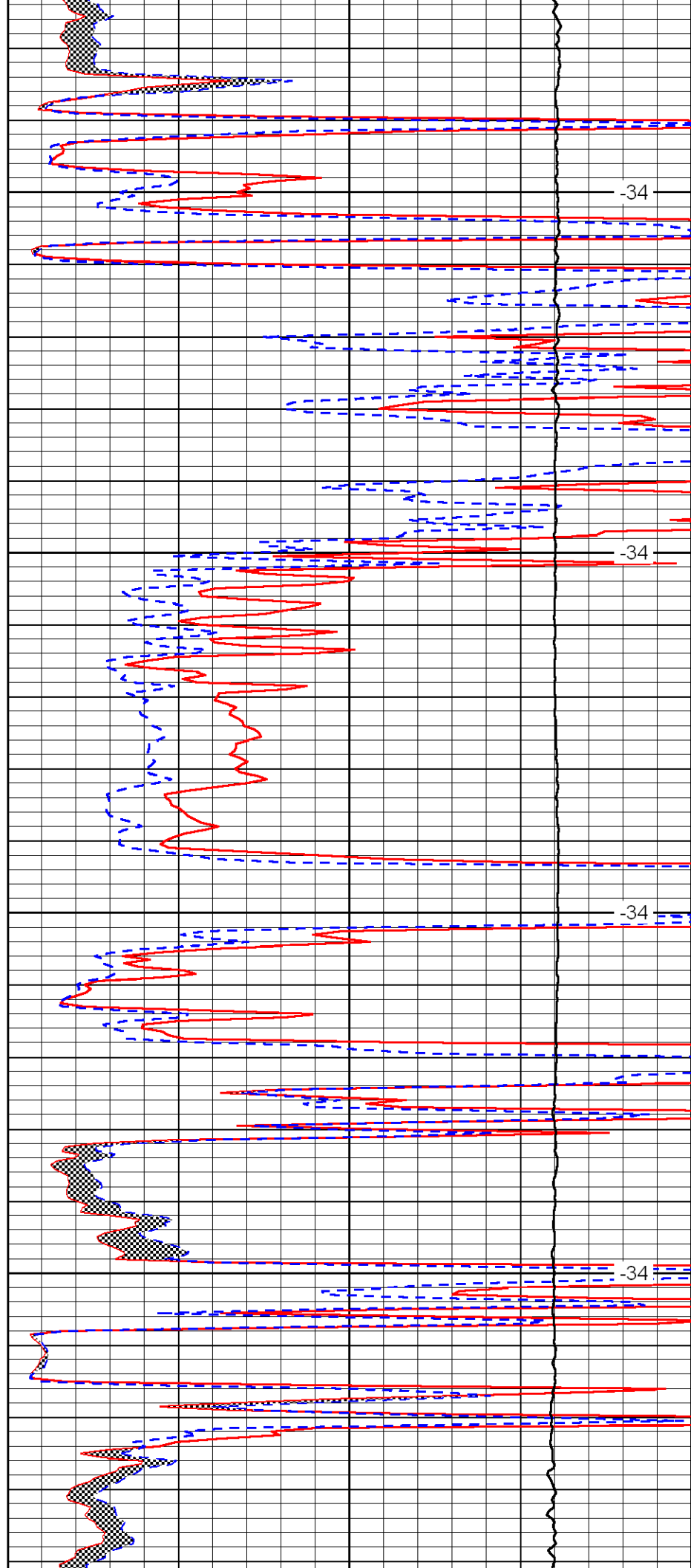


4050

4100

4150

4200

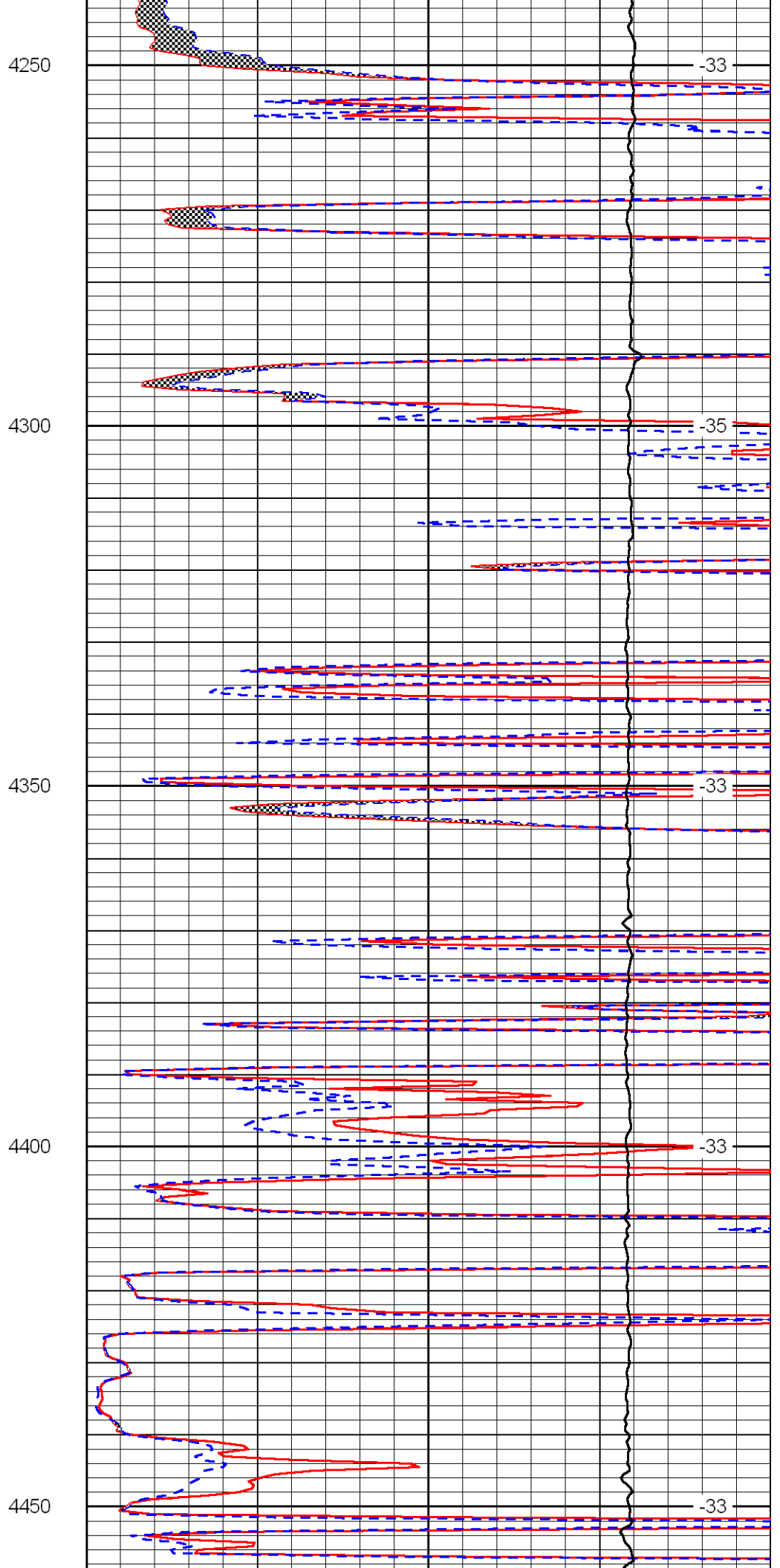
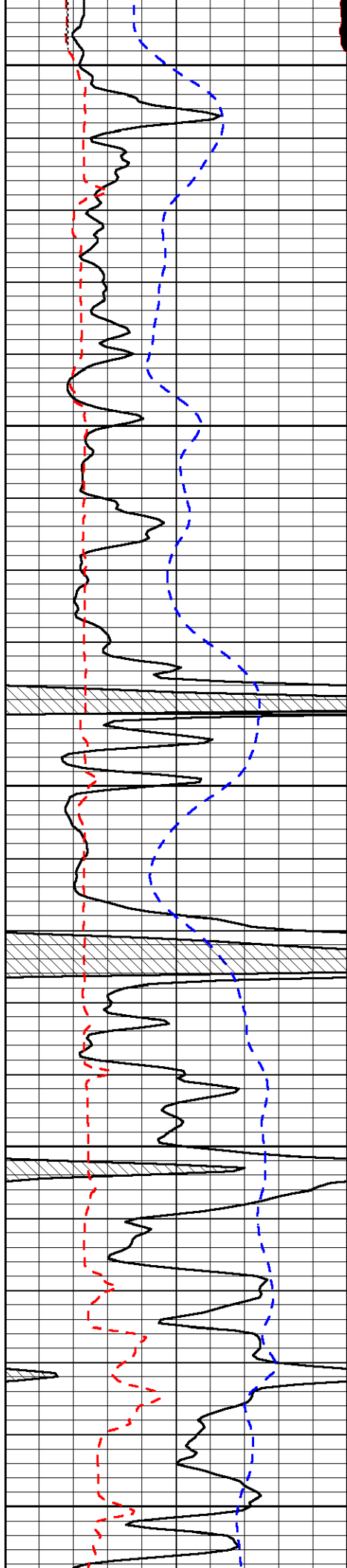


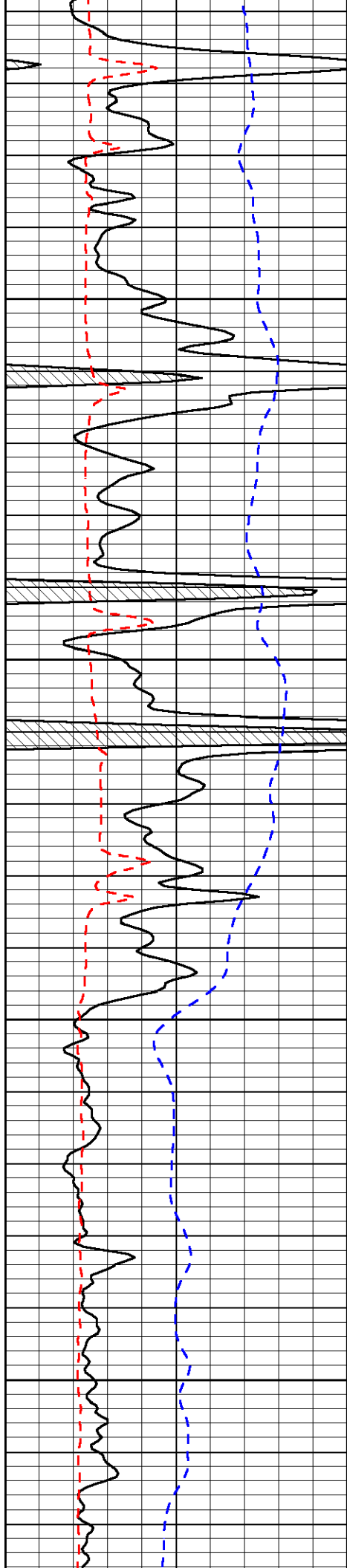
-34

-34

-34

-34



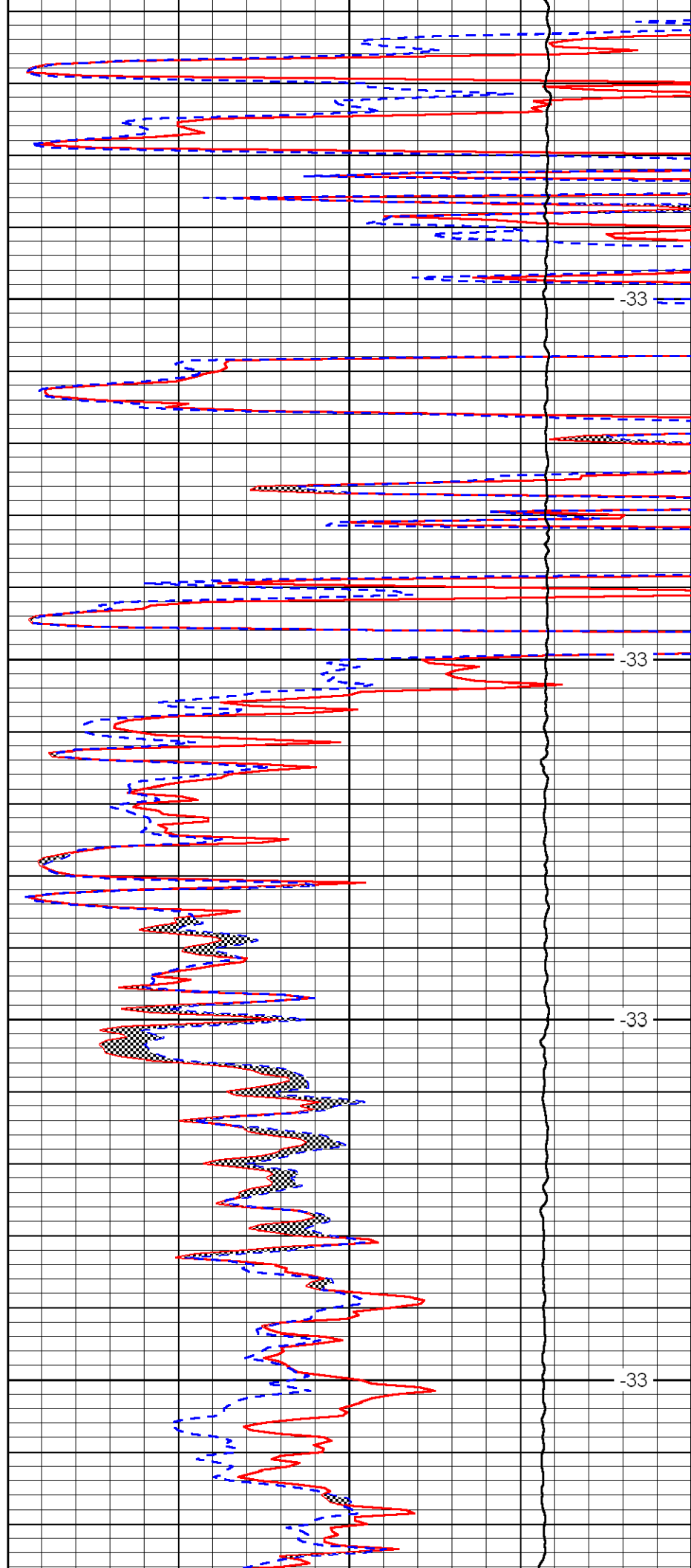


4500

4550

4600

4650

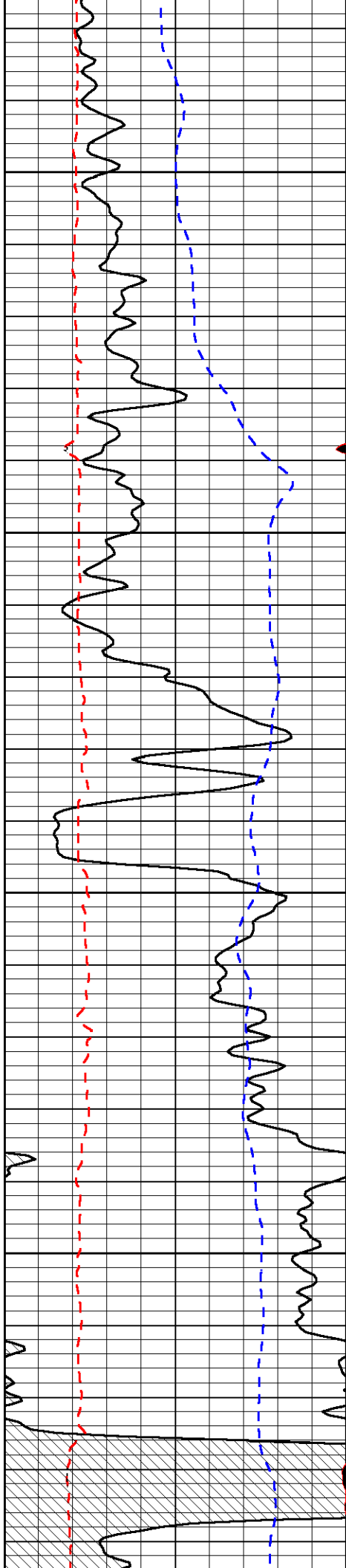


-33

-33

-33

-33

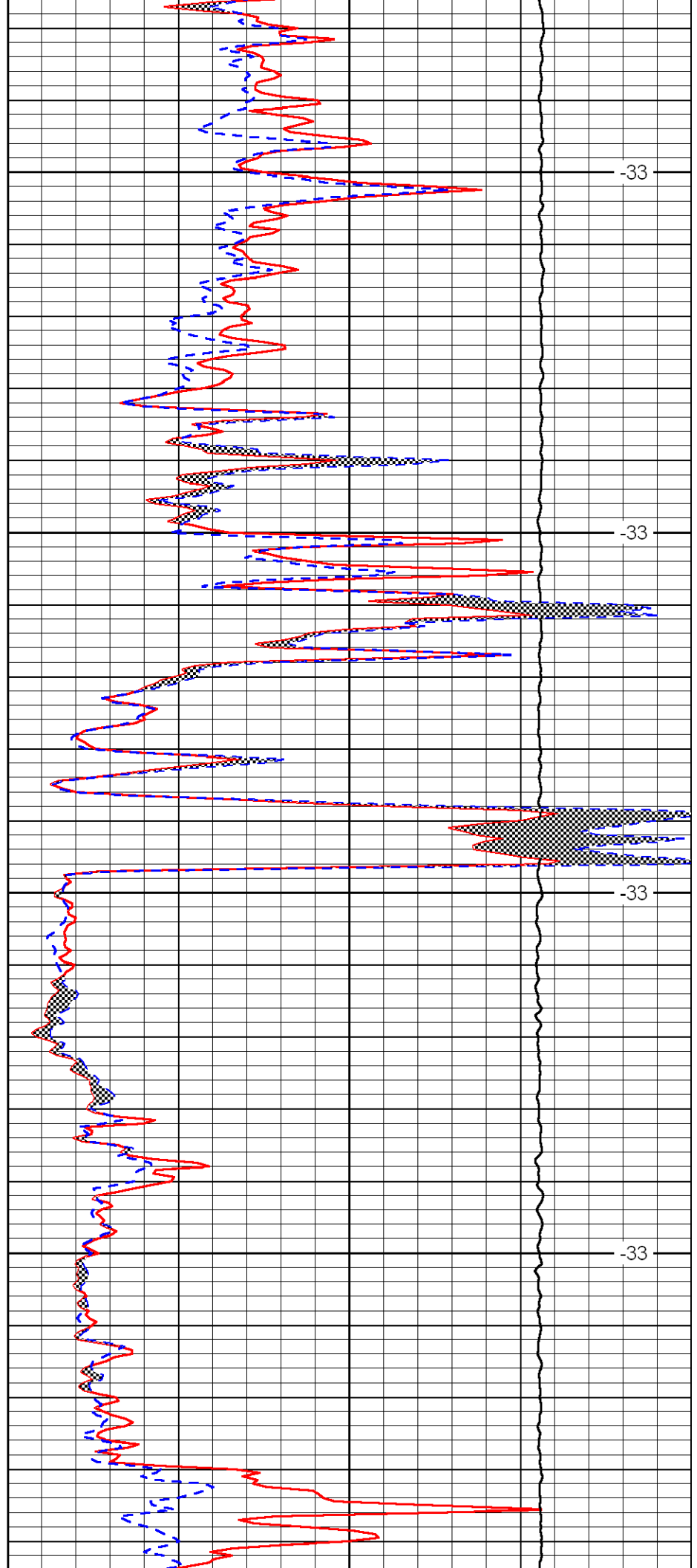


4700

4750

4800

4850

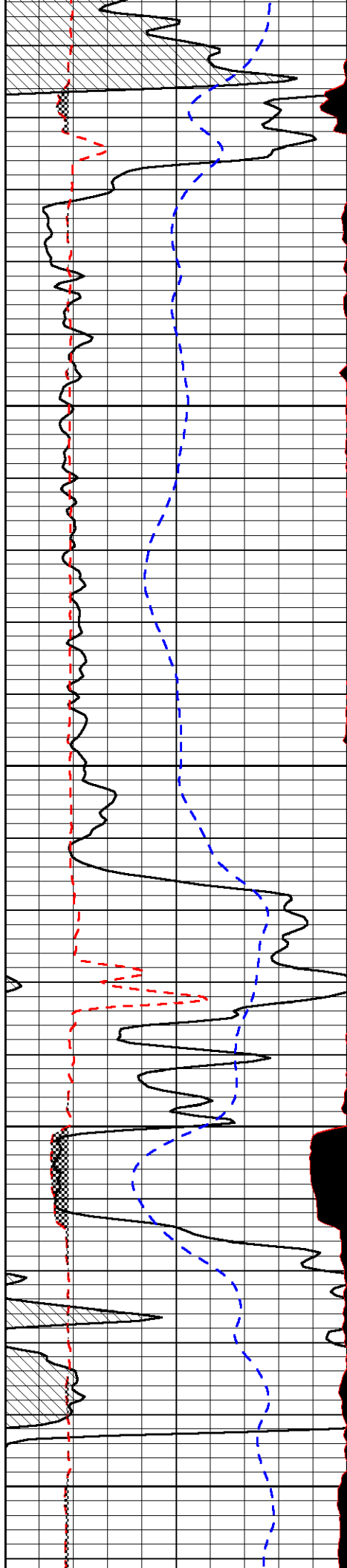


-33

-33

-33

-33



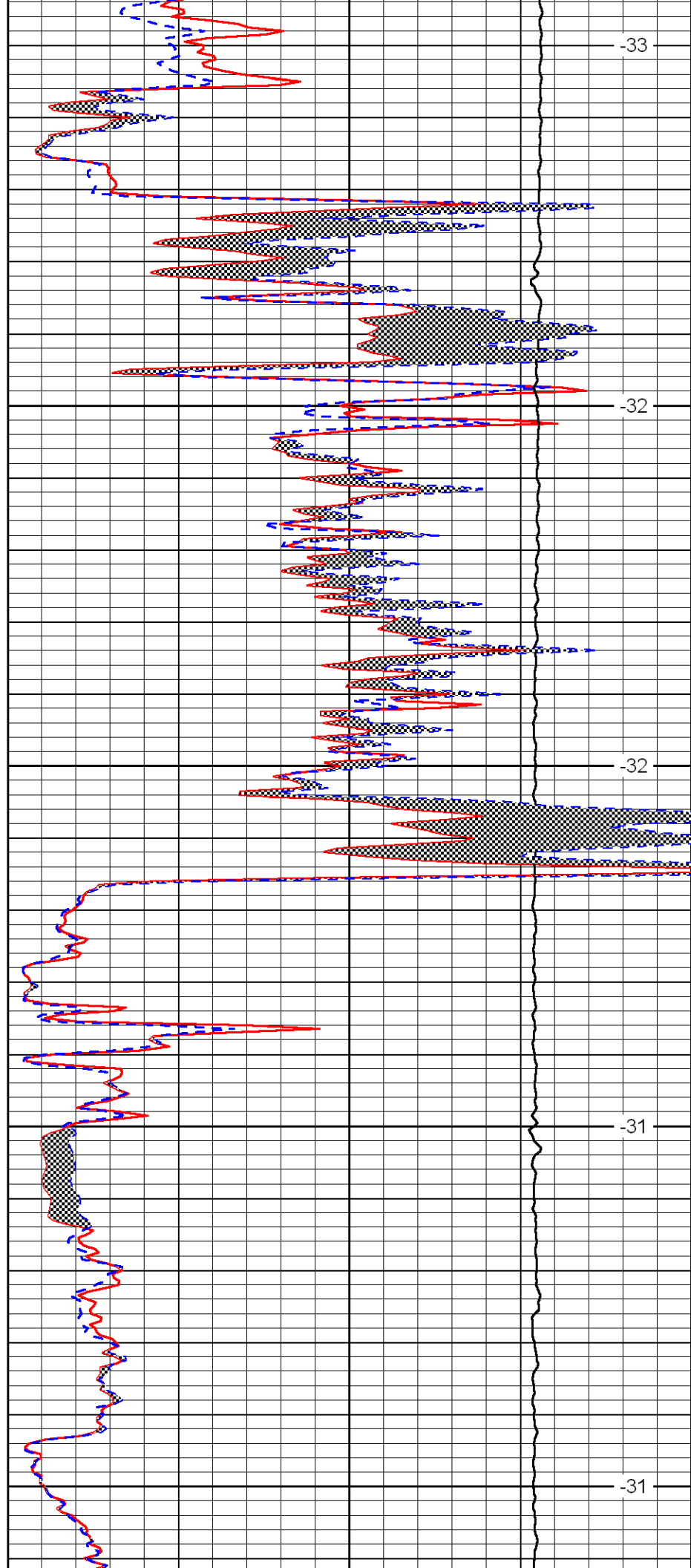
4900

4950

5000

5050

5100



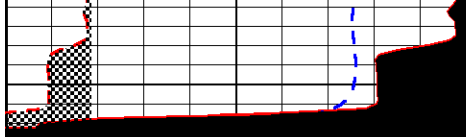
-33

-32

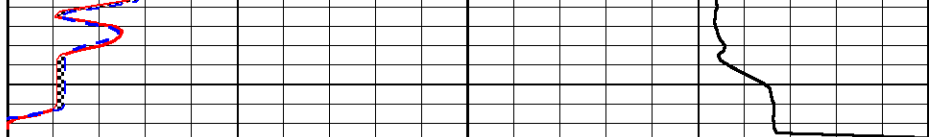
-32

-31

-31



0	Gamma Ray	150
6	MCAL (GAPI)	16
2.875	Mud Cake (GAPI)	7.875
-200	SP	0



0	Micro Inverse 1 X 1	40
0	Micro Normal 2''	40
10000	Line Weight	0

LSPD