

**SUPERIOR
Hays,
Kansas**

**COMPENSATED
DENSITY / NEUTRON
PE LOG**

Company CHIEFTAIN OIL CO., INC.
Well BLEVINS "A" #1
Field MAYBERRY
County BARBER
State KANSAS

Company CHIEFTAIN OIL COMPANY, INC.
Well BLEVINS "A" #1
Field MAYBERRY
County BARBER State KANSAS

Location: API #: 15-007-23804
2300' FSL & 450' FWL
SEC 25 TWP 34S RGE 11W
Other Services
DIL
Elevation
K.B. 1370
D.F.
G.L. 1362

| | | | |
|------------------------------|-------------|-----------------------|--------------|
| Date | 11-20-11 | Run Number | ONE |
| Depth Driller | 5390 | Depth Logger | 5388 |
| Bottom Logged Interval | 5364 | Top Log Interval | 3400 |
| Casing Driller | 307 | Casing Logger | 307 |
| Bit Size | 7.875 | Type Fluid in Hole | CHEMICAL MUD |
| Density / Viscosity | 9.3 / 57 | pH / Fluid Loss | 9.5 / 11.0 |
| Source of Sample | FLOWLINE | Rim @ Meas. Temp | 0.58 @ 80F |
| Rmf @ Meas. Temp | 0.44 @ 80F | Rmc @ Meas. Temp | 0.70 @ 80F |
| Source of Rmf / Rmc | MEASURED | Rim @ BHT | .360 @ 128F |
| Time Circulation Stopped | 3 HOURS | Time Logger on Bottom | 7:30 P.M. |
| Maximum Recorded Temperature | 128F | Equipment Number | 860 |
| Location | HAYS, KS. | Recorded By | RUPP |
| Witnessed By | DAVE BARKER | | |

<<< Fold Here >>>

All interpretations are opinions based on inferences from electrical or other measurements and we cannot and do not guarantee the accuracy or correctness of any interpretation, and we shall not, except in the case of gross or willful negligence on our part, be liable or responsible for any loss, costs, damages, or expenses incurred or sustained by anyone resulting from any interpretation made by any of our officers, agents or employees. These interpretations are also subject to our general terms and conditions set out in our current Price Schedule.

Comments

SUPERIOR WELL SERVICES
 785-628-6395
 THANK YOU FOR YOUR BUSINESS
 DIRECTIONS: KIOWA & HIGHWAY #2, 2 NE TO RATTLESNAKE RD., 1W, 1/N, E INTO.

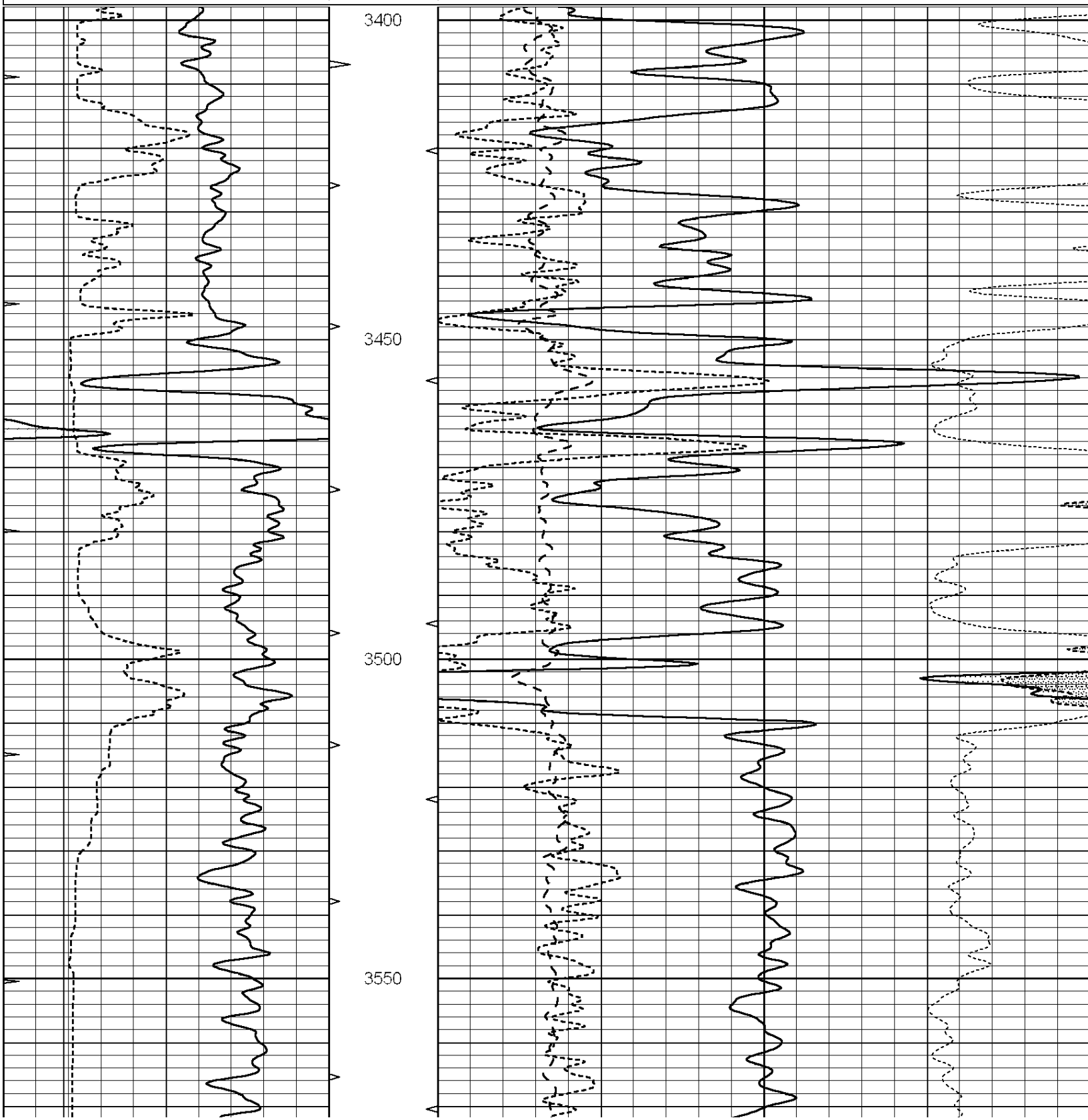


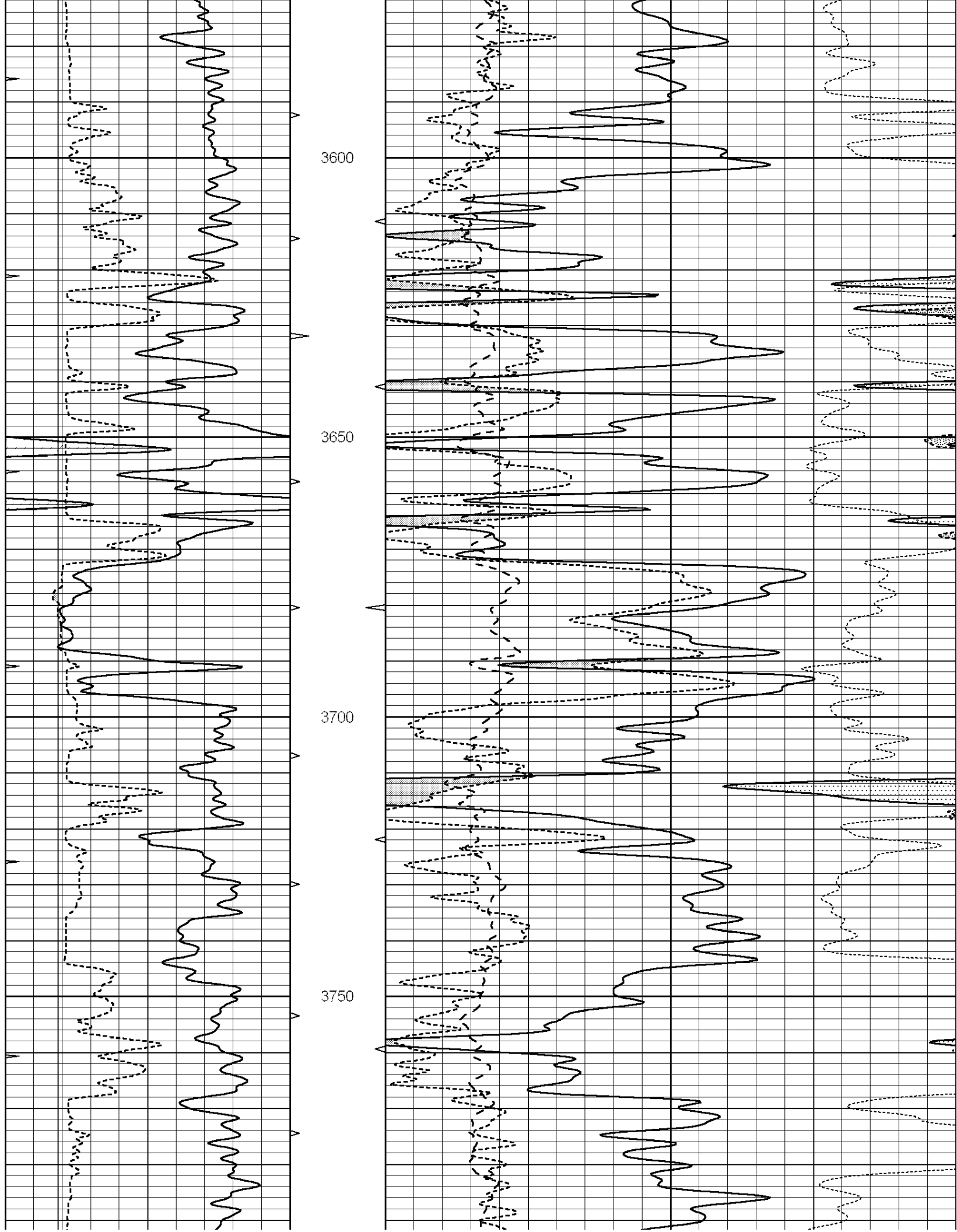
**SUPERIOR
Hays,
Kansas**

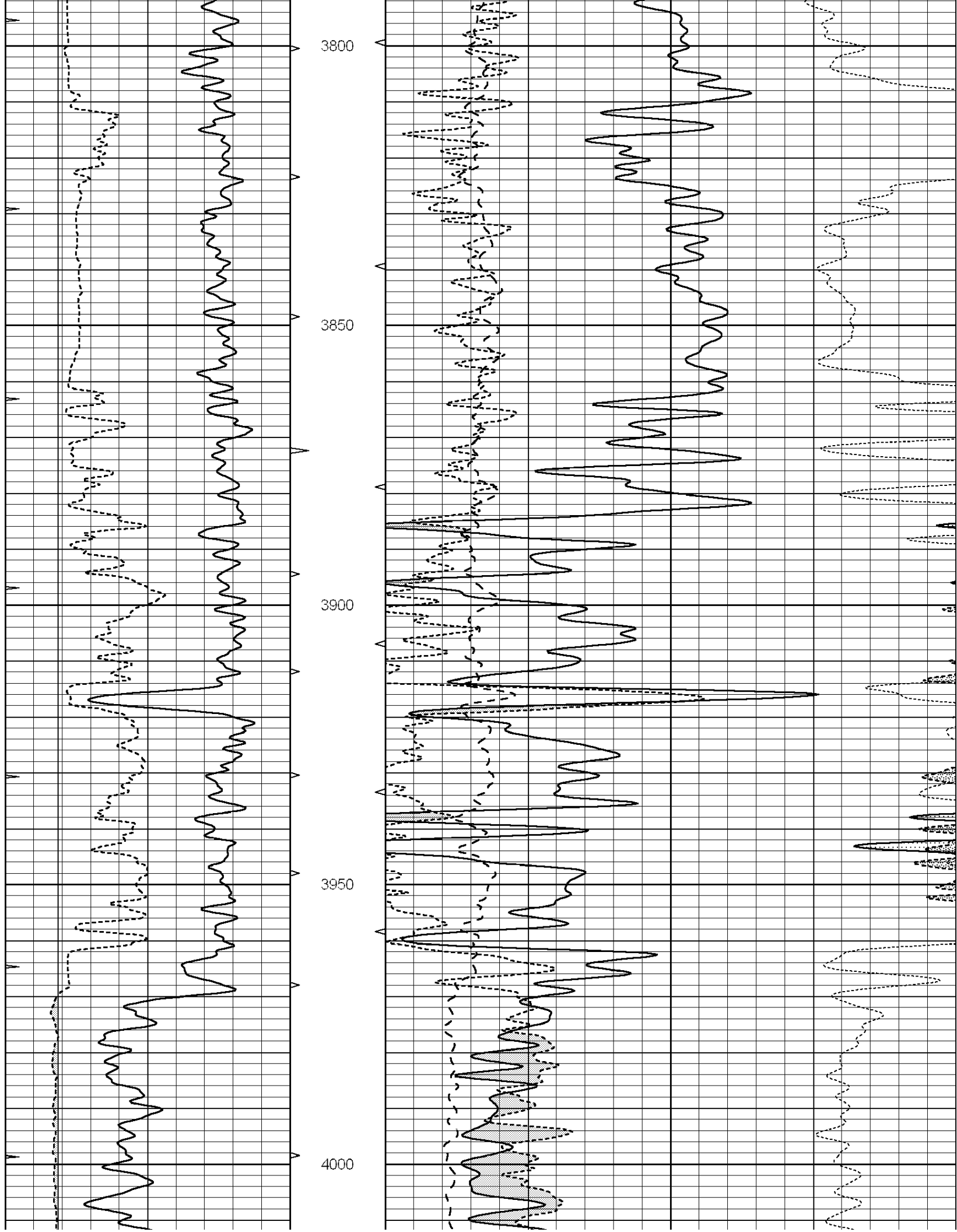
MAIN SECTION

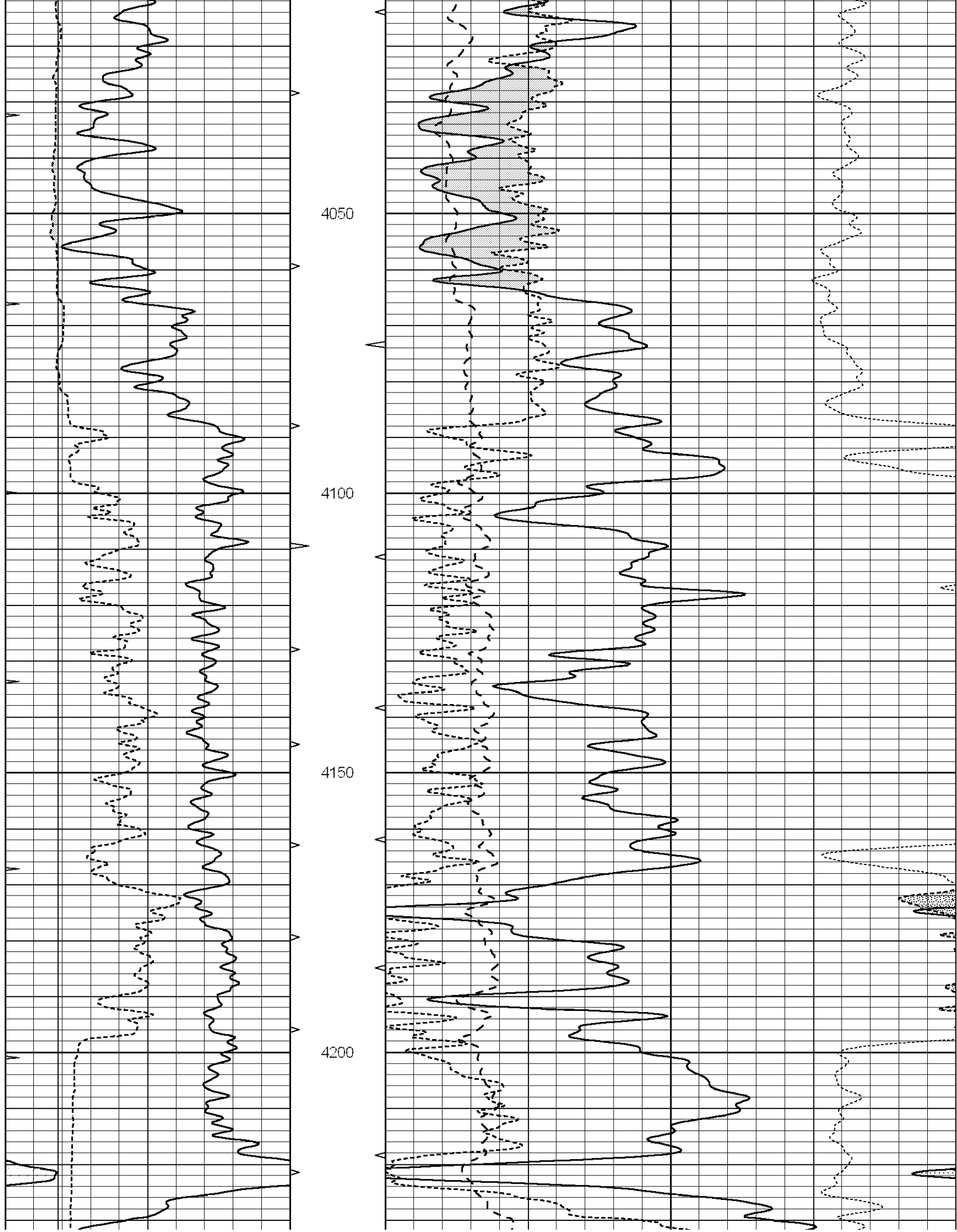
Database File: 008015pdm.db
 Dataset Pathname: pass3.A
 Presentation Format: ldt_neu
 Dataset Creation: Sun Nov 20 22:15:40 2011
 Charted by: Depth in Feet scaled 1:240

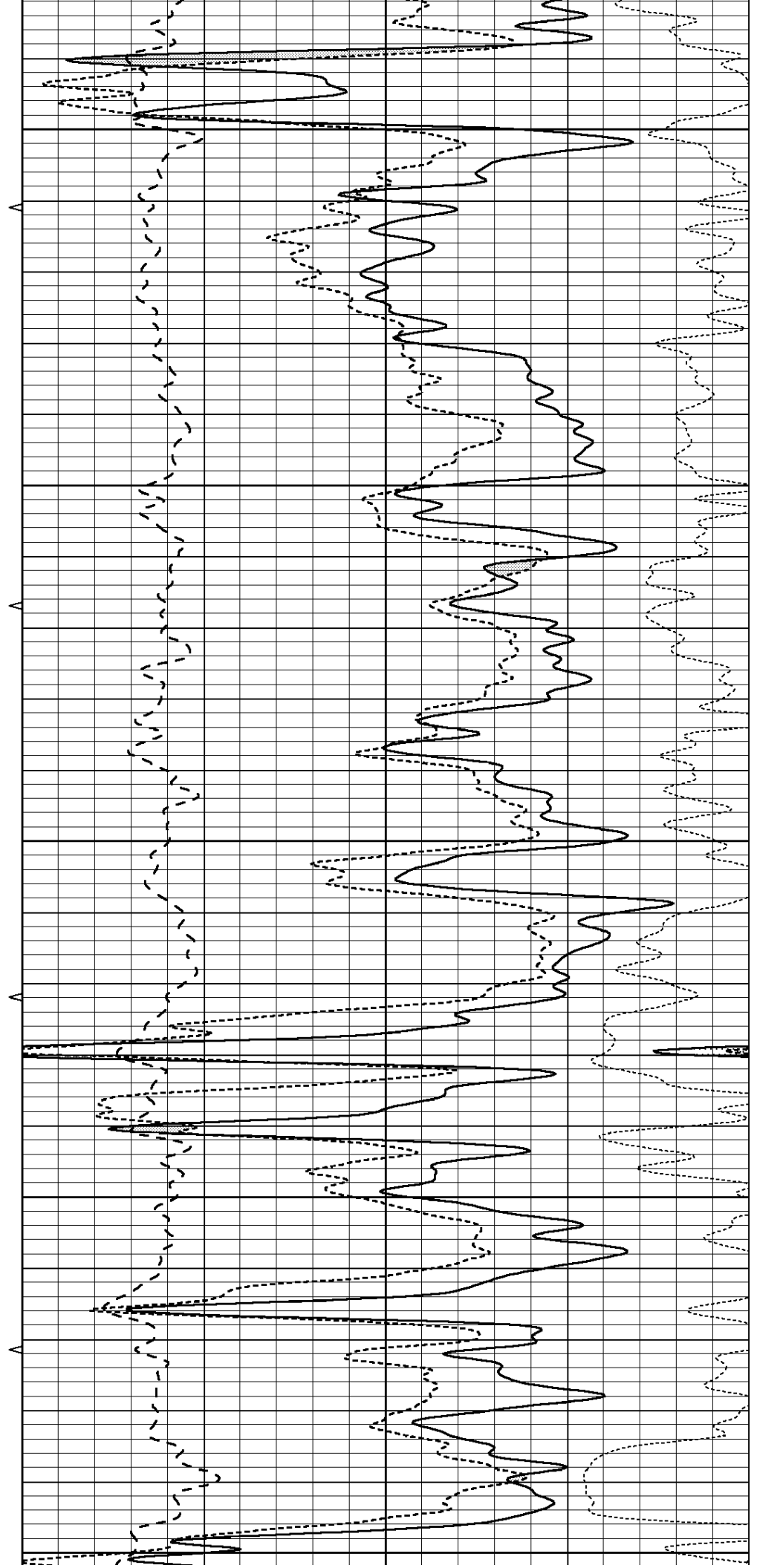
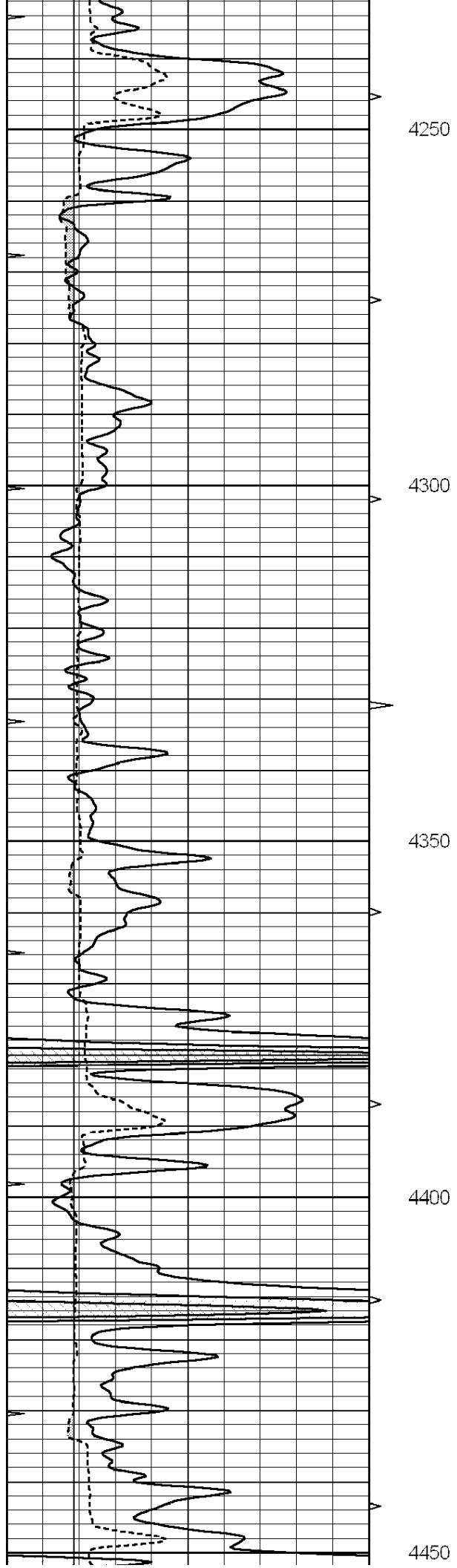
| | | | | | | | |
|---|------------------|-----|------------|----|--------------------------|----------|------------------------|
| 0 | GAMMA RAY (GAPI) | 150 | ABHV | 30 | COMPENSATED DENSITY (pu) | | -10 |
| 6 | CALIPER (in) | 16 | 10 (ft3) 0 | 30 | COMPENSATED NEUTRON (pu) | | -10 |
| 0 | MINMK | 20 | TBHV | 0 | PE | 10 -0.25 | CORRECTION (g/cc) 0.25 |
| | | | 0 (ft3) 10 | | | | |

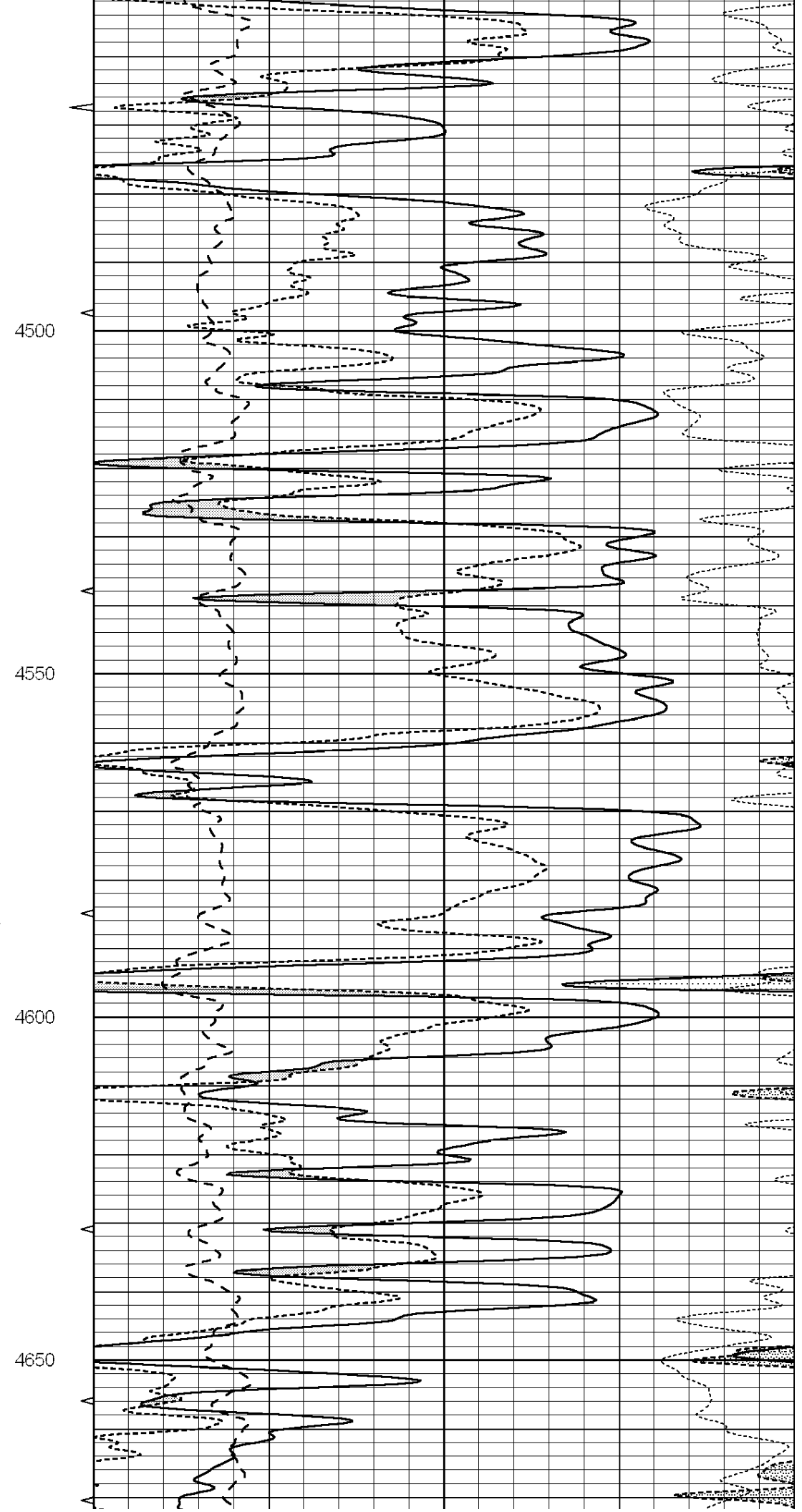
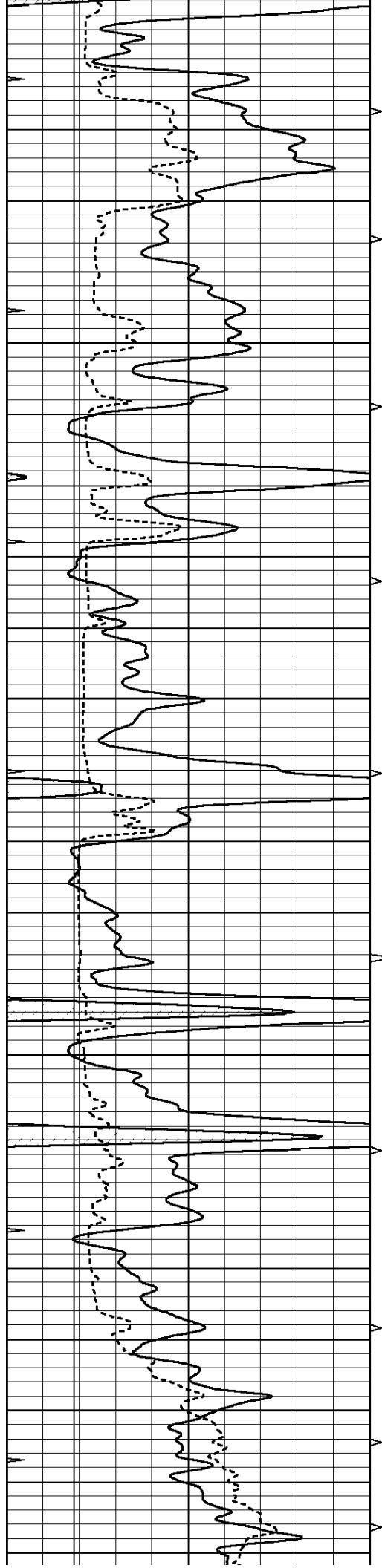


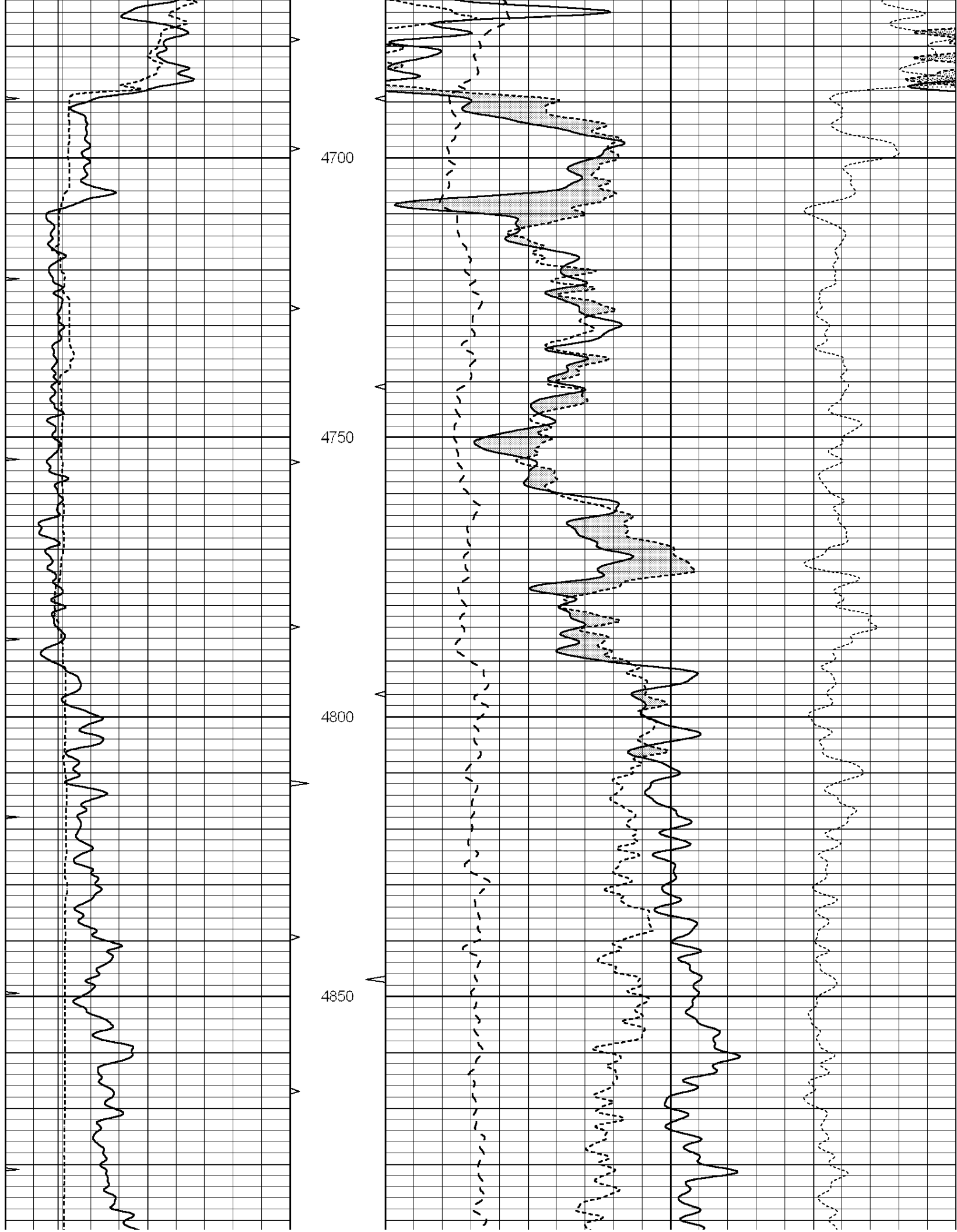


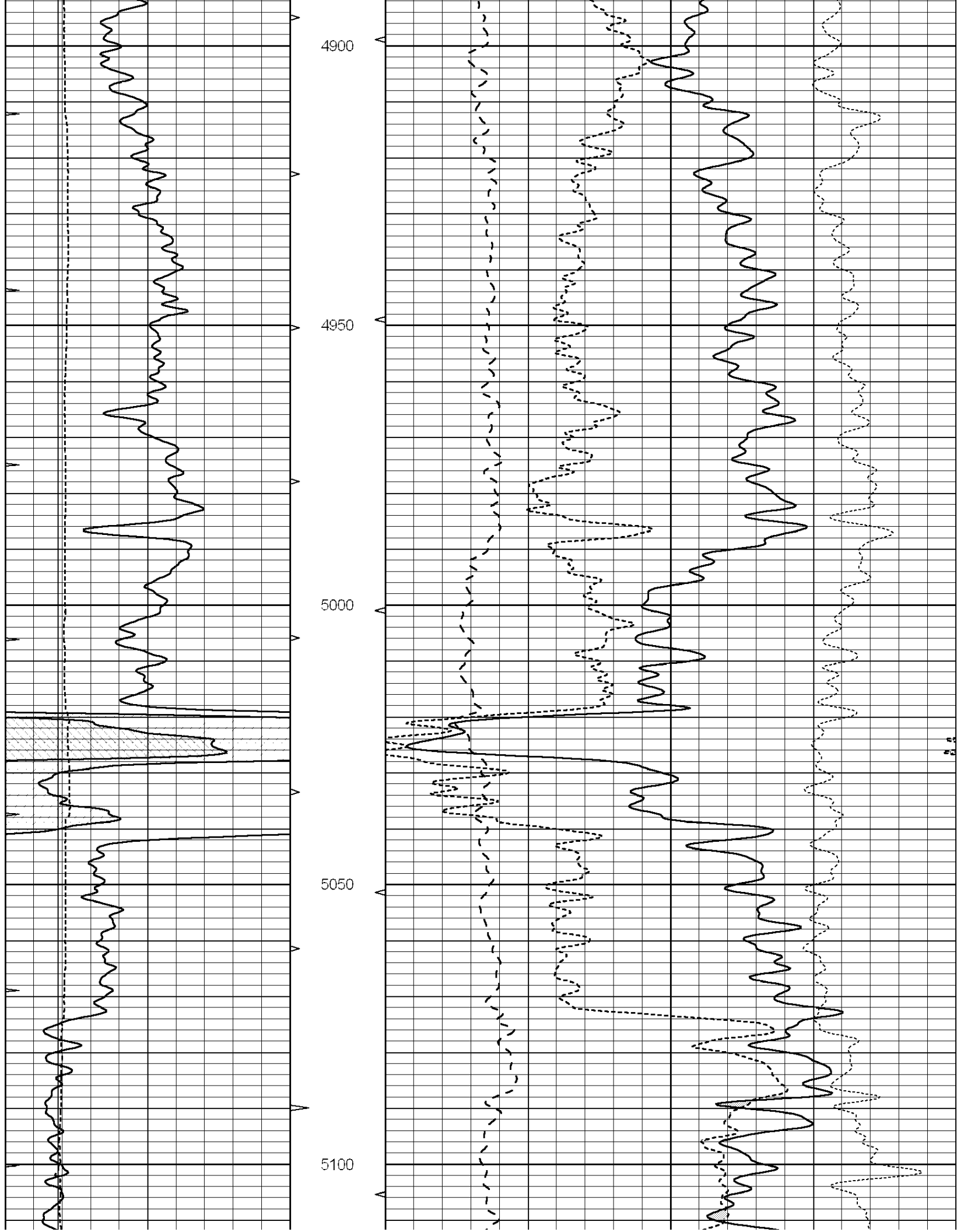


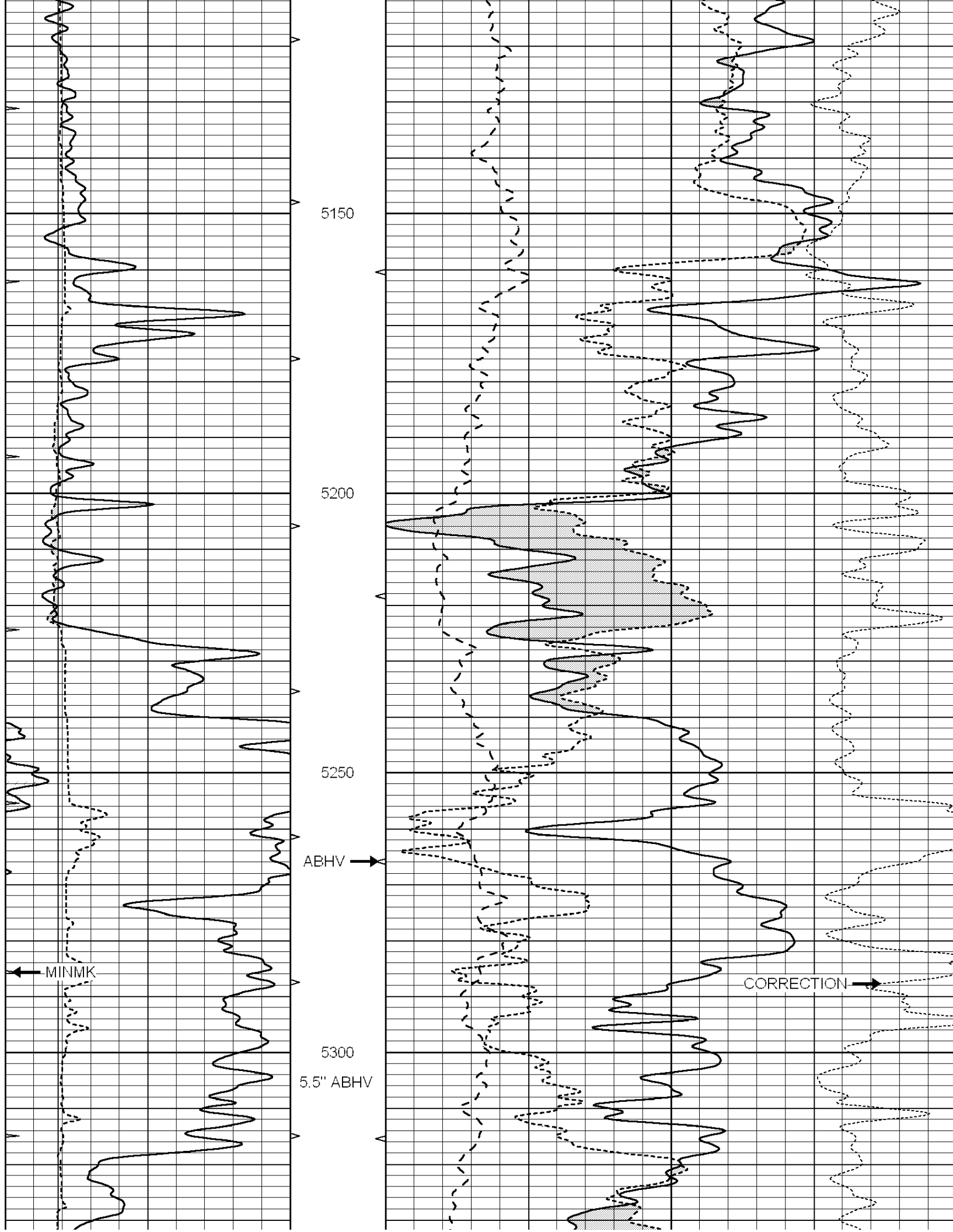


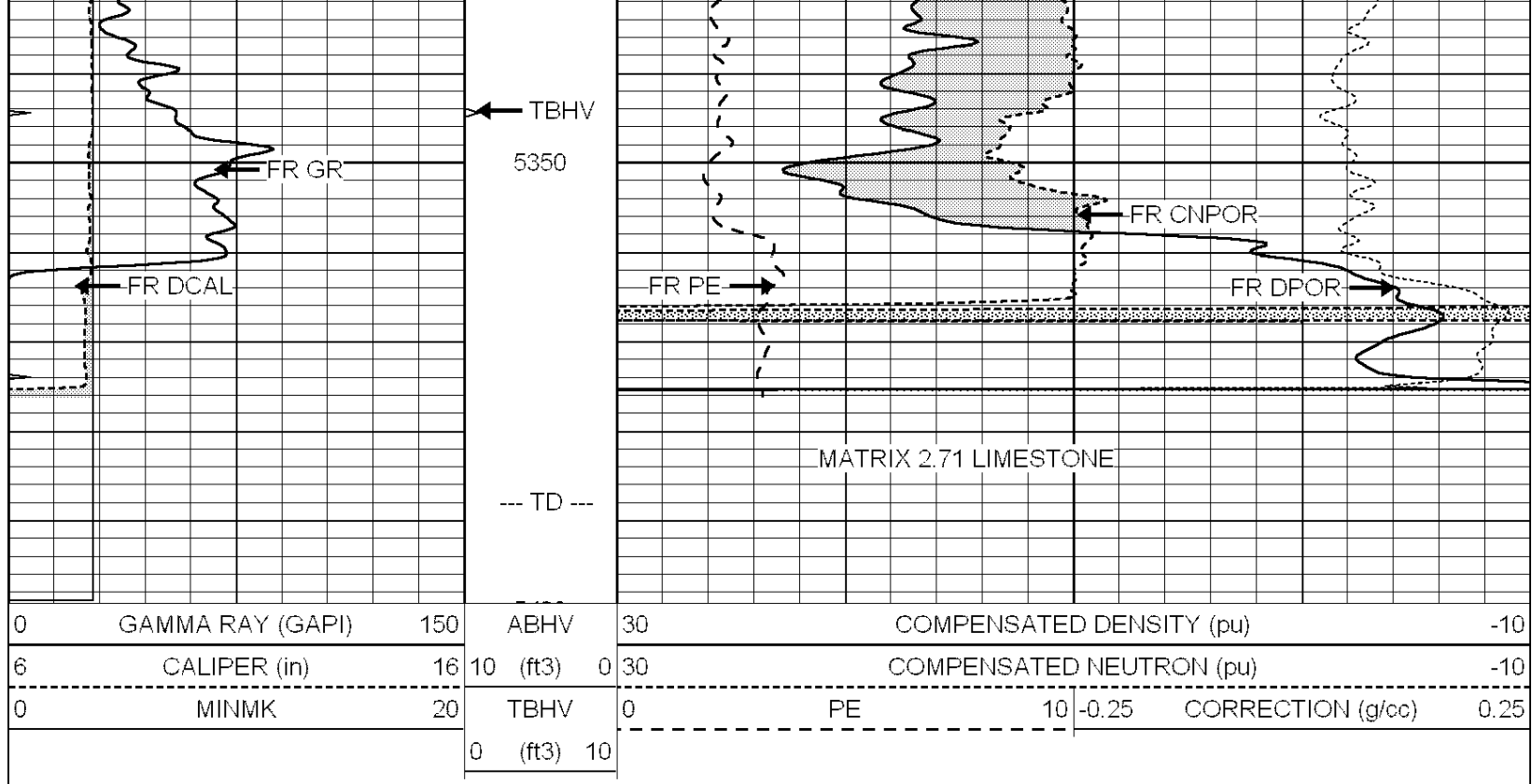










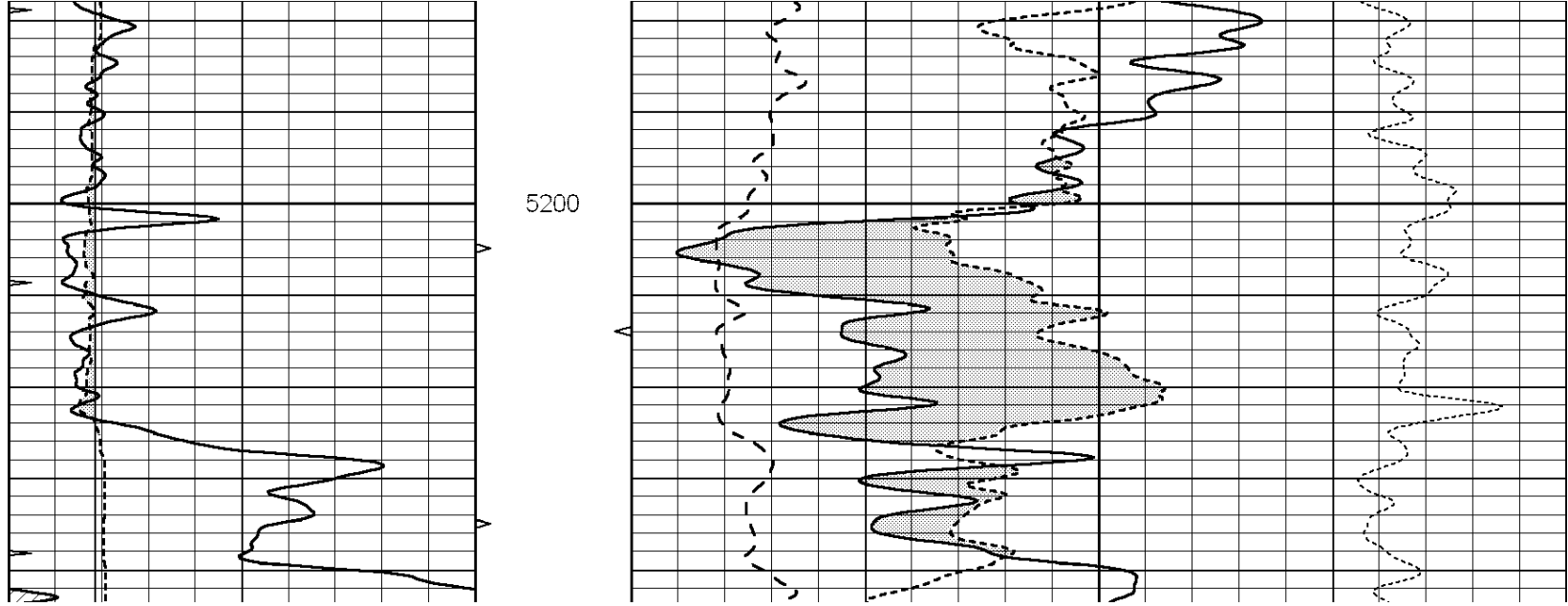


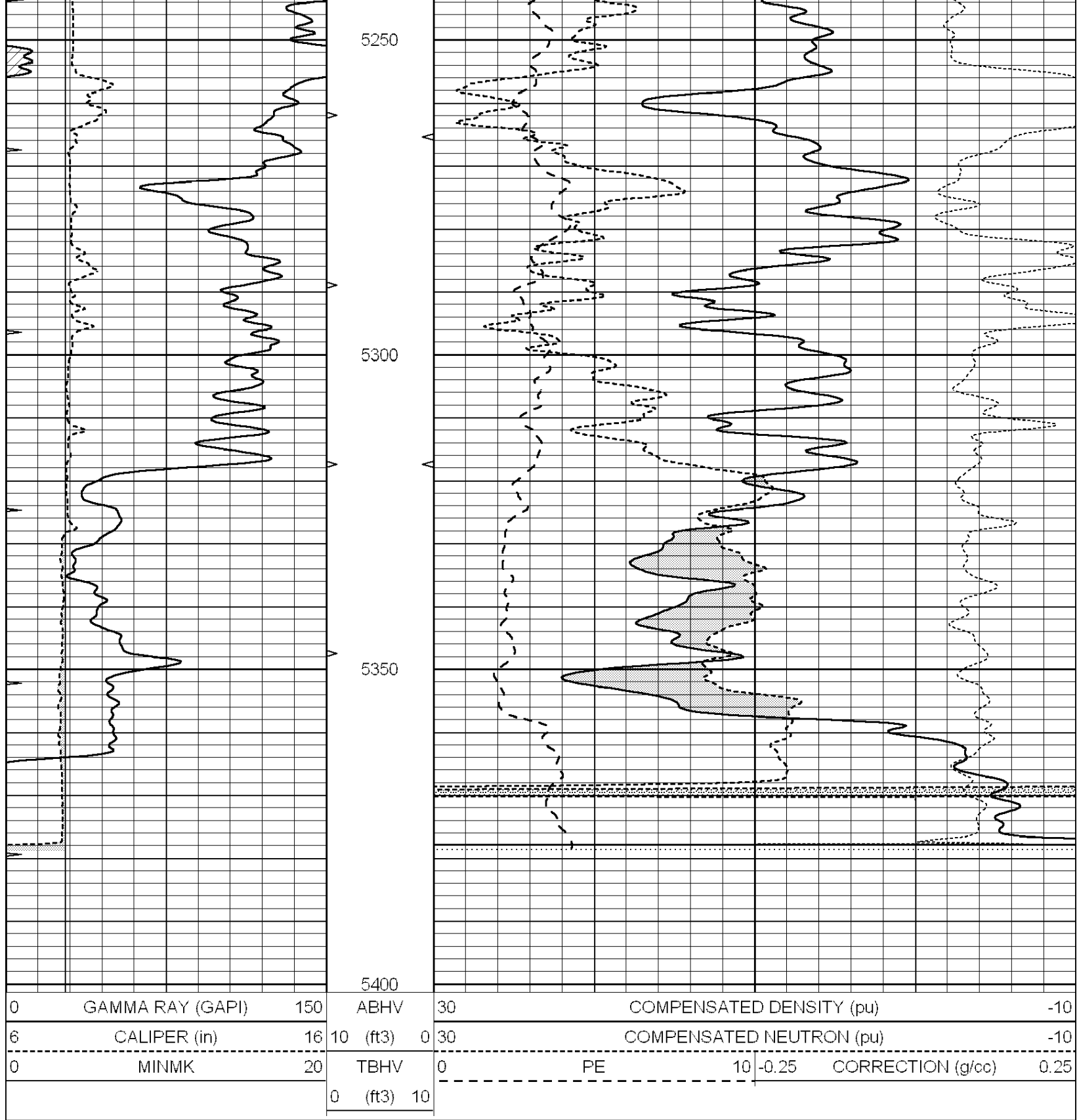
SUPERIOR
Hays,
Kansas

REPEAT SECTION

Database File: 008015pdm.db
 Dataset Pathname: pass2.1
 Presentation Format: ldt_neu
 Dataset Creation: Sun Nov 20 20:08:44 2011 by Calc Open-Cased 090629
 Charted by: Depth in Feet scaled 1:240

| | | | | | | |
|---|------------------|-----|------------|----|--------------------------|---------------------------------|
| 0 | GAMMA RAY (GAPI) | 150 | ABHV | 30 | COMPENSATED DENSITY (pu) | -10 |
| 6 | CALIPER (in) | 16 | 10 (ft3) 0 | 30 | COMPENSATED NEUTRON (pu) | -10 |
| 0 | MINMK | 20 | TBHV | 0 | PE | 10 -0.25 CORRECTION (g/cc) 0.25 |
| | | | 0 (ft3) 10 | | | |





Calibration Report

Database File: 008015pdn.db
 Dataset Pathname: pass3.A
 Dataset Creation: Sun Nov 20 22:15:40 2011

Dual Induction Calibration Report

Serial-Model: DIL5-GEAR
 Performed: Sun Nov 20 21:15:16 2011

Readings

References

Results

| Loop: | Air | Loop | | Air | Loop | | m | b |
|-----------|--------|-------|---|-------|---------|--------|---------|---------|
| Deep | 0.004 | 0.654 | V | 0.000 | 400.000 | mmho/m | 520.000 | -20.000 |
| Medium | -0.005 | 0.737 | V | 0.000 | 462.500 | mmho/m | 550.000 | -16.000 |
| Internal: | Zero | Cal | | Zero | Cal | | m | b |
| Deep | 0.006 | 0.655 | V | 0.000 | 400.000 | mmho/m | 615.668 | -3.483 |
| Medium | 0.010 | 0.747 | V | 0.000 | 462.500 | mmho/m | 627.607 | -6.064 |

Litho Density Calibration Report
Serial: 002 Model: PRB
Performed Tue Jul 03 11:12:28 2007

Litho Density Calibration

| | Background | Magnesium | Aluminum | Sandstone | |
|-------------|------------|-------------|----------|---------------------|---------|
| Window 1 | 1059.5 | 9172.0 | 2859.6 | 10210.6 | cps |
| Window 2 | 976.0 | 7793.2 | 2486.1 | 8515.6 | cps |
| Window 3 | 689.8 | 2930.5 | 1159.0 | 3096.2 | cps |
| Window 4 | 231.9 | 237.2 | 231.1 | 234.0 | cps |
| Long Space | 0.0 | 6817.1 | 1510.1 | 7539.6 | cps |
| Short Space | 1.6 | 1758.1 | 1188.6 | 1898.8 | cps |
| Rho | | 1.7100 | 2.5960 | 1.3800 | g/cc |
| Pe | | | 2.5700 | 1.5500 | |
| Rib Angle | : 45.4 | Rib Slope | : 1.015 | Density/Spine Ratio | : 0.569 |
| Spine Angle | : 75.4 | Spine Slope | : 3.850 | Spine Intercept | : -19.9 |

| Caliper | Readings | Reference | |
|----------|-----------|-----------|--------------|
| Low Ref | 3.8 | 8.5 | |
| High Ref | 4.9 | 12.0 | |
| | Gain: 3.1 | | Offset: -3.3 |

Compensated Neutron Calibration Report

Serial Number: NUE_2I
Tool Model: G

CALIBRATION

| Detector | Readings | Target | Normalization |
|-------------|----------|----------|---------------|
| Short Space | 1.00 cps | 1.00 cps | 1.0000 |
| Long Space | 1.00 cps | 1.00 cps | 1.0000 |

Gamma Ray Calibration Report

Serial Number: GR5
Tool Model: OPEN
Performed: Sun Nov 20 20:12:33 2011

Calibrator Value: 1.0 GAPI

Background Reading: 0.0 cps
Calibrator Reading: 1.0 cps

Sensitivity: 0.6500 GAPI/cps