



Dual Compensated
Porosity Log

DIGITAL LOG (785) 625-3858

API No. 15-051-25947-00-00

Company: Murfin Drilling Company, Inc.
Well: Haselhorst No. 1-4
Field: Stadelman
County: Ellis
State: Kansas

Location: 1650' FSL & 1080' FEL

Sec: 4 Twp: 14 S Rge: 19 W

Other Services: DIL MEL/BHCS

Permanent Datum: Ground Level Elevation 2229
Log Measured From: Kelly Bushing 5 Ft. Above Perm. Datum
Drilling Measured From: Kelly Bushing

Elevation: K.B. 2234 D.F. G.L. 2229

Date: 1/15/2010

Run Number: One

Type Log: CNL / CDL

Depth Driller: 3960

Depth Logger: 3962

Bottom Logged Interval: 3941

Top Logged Interval: 3100

Type Fluid In Hole: Chemical

Salinity, PPM CL: 8,900

Density: 9.1

Level: Full

Max. Rec. Temp. F: 116

Operating Rig Time: 5 Hours

Equipment -- Location: 15 Hays

Recorded By: B. Becker

Witnessed By: Paul Gunzelman

Run No	Bit	Borehole Record		Casing Record	
		From	To	From	To
1	12.25	00	218	8.625	24#
2	7.875	218	3960		

<<< Fold Here >>>

All interpretations are opinions based on inferences from electrical or other measurements and we cannot and do not guarantee the accuracy or correctness of any interpretation, and we shall not, except in the case of gross or willful negligence on our part, be liable or responsible for any loss, costs, damages, or expenses incurred or sustained by anyone resulting from any interpretation made by any of our officers, agents or employees. These interpretations are also subject to our general terms and conditions set out in our current Price Schedule.

Comments

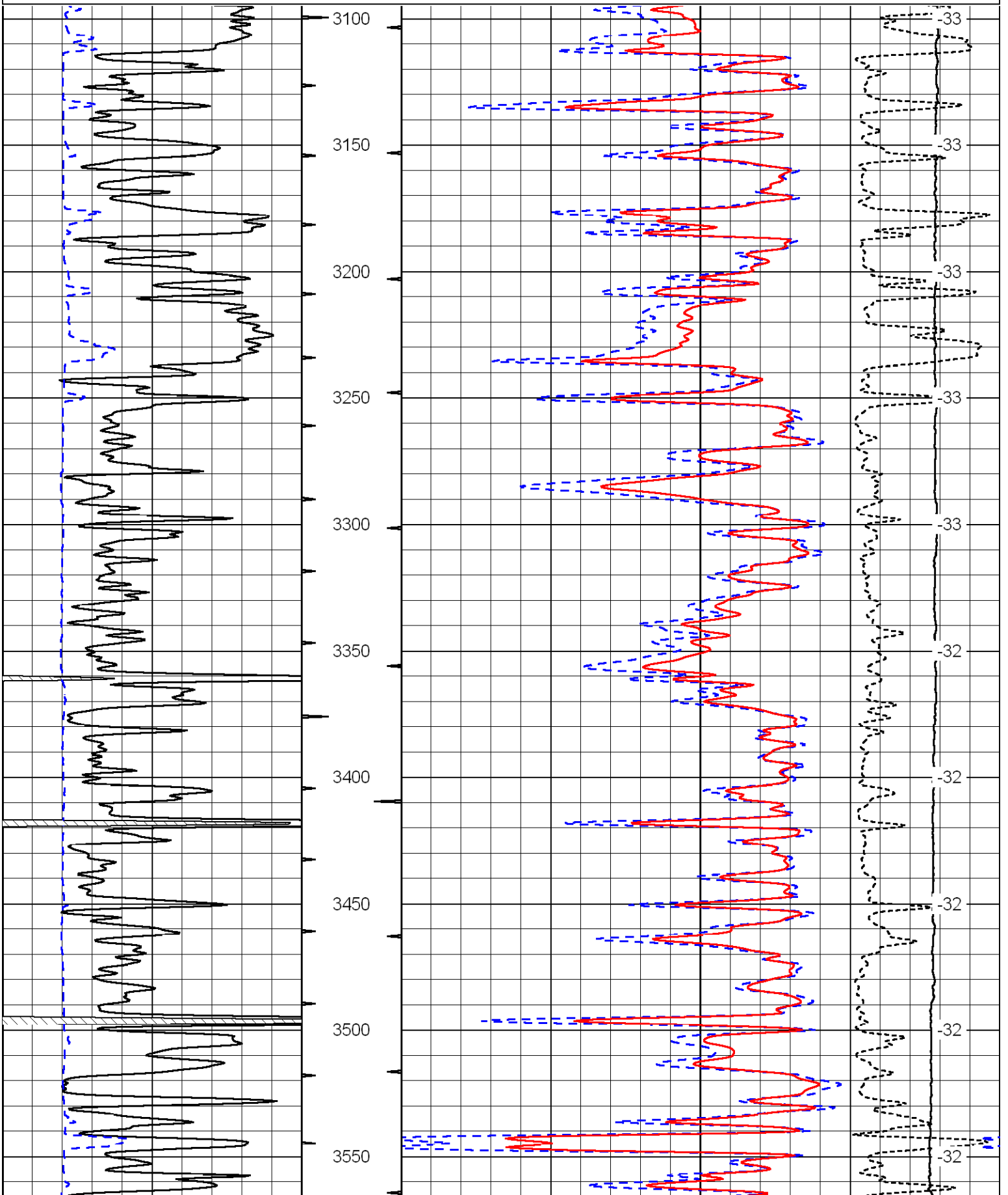
Thank you for using Log-Tech, Inc.
(785) 625-3858

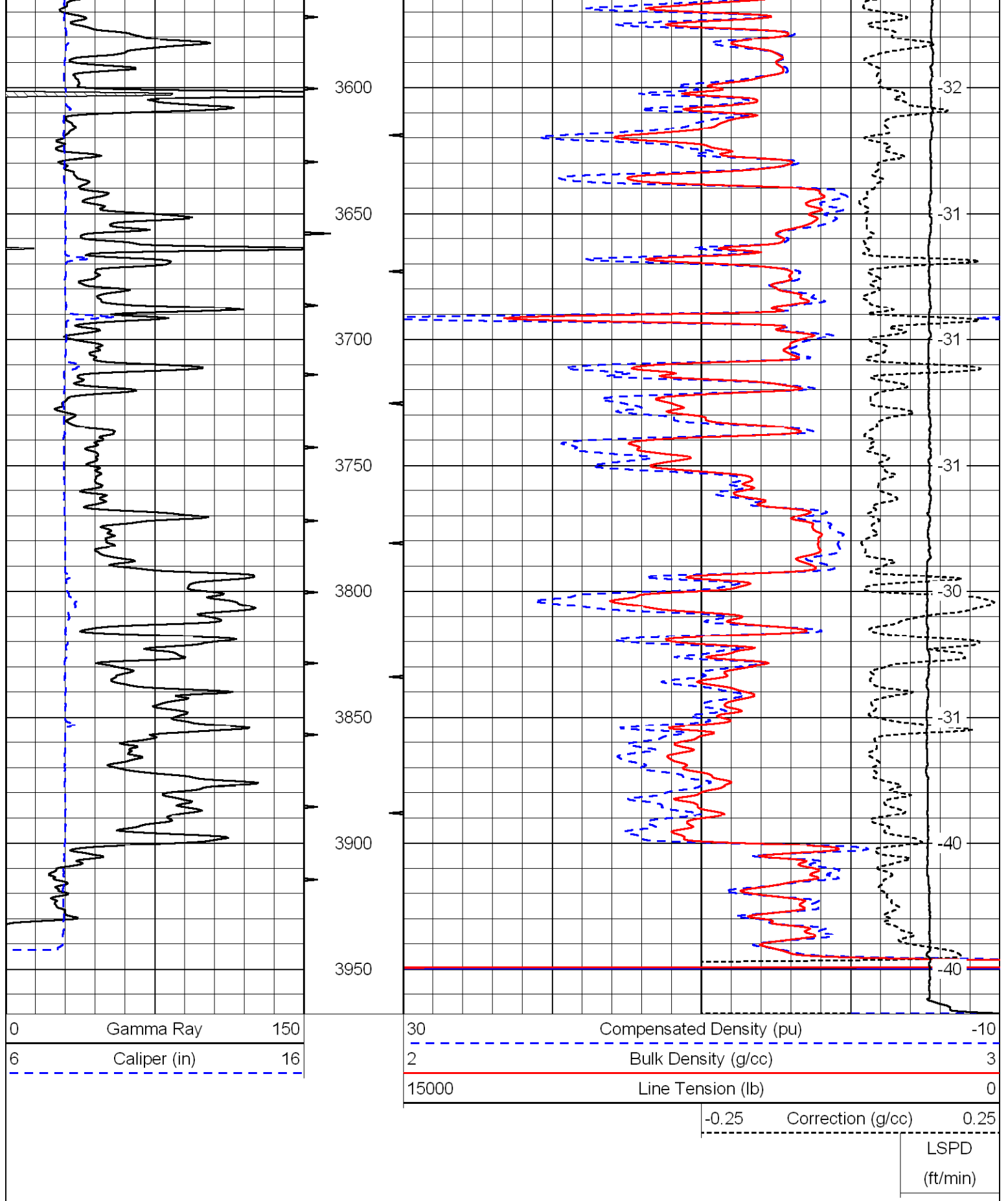
Hays, Ks; West on Golf Course Rd to Yocemento Rd;
1/2 North; West Into Location

Database File: c:\warrior\data\murfin_hasellhorst #1-4\murfinhd.db
Dataset Pathname: DIL/murfstk2
Presentation Format: cdl
Dataset Creation: Fri Jan 15 17:40:40 2010
Charted by: Depth in Feet scaled 1:600

0	Gamma Ray	150
6	Caliper (in)	16

30	Compensated Density (pu)	-10
2	Bulk Density (g/cc)	3
15000	Line Tension (lb)	0
-0.25	Correction (g/cc)	0.25
		LSPD (ft/min)





Database File: c:\warrior\data\murfin_hasellhorst #1-4\murfinhd.db
 Dataset Pathname: DIL/murfstk2
 Presentation Format: cndlspec
 Dataset Creation: Fri Jan 15 17:40:40 2010
 Charted by: Depth in Feet scaled 1:240

0	Gamma Ray	150
6	Caliper (in)	16

30	Compensated Neutron (Limestone) (pu)	-10
30	Compensated Density (2.71 ma) (pu)	-10
15000	Line Tension (lb)	0
-0.25	Correction (g/cc)	0.25
	LSPD (ft/min)	

