



Microresistivity Log

DIGITAL LOG (785) 625-3858

API No.	15-051-25947-00-00		
Company	Murfin Drilling Company, Inc.		
Well	Haselhorst No. 1-4		
Field	Stadelman		
County	Ellis	State	Kansas
Location	1650' FSL & 1080' FEL		
Sec: 4	Twp: 14 S	Rge: 19 W	Elevation 2229
Permanent Datum	Ground Level		Elevation 2229
Log Measured From	Kelly Bushing	5 Ft. Above Perm. Datum	K.B. 2234
Drilling Measured From	Kelly Bushing		D.F. 2229
			G.L. 2229

Date	1/15/2010
Run Number	Two
Depth Driller	3960
Depth Logger	3962
Bottom Logged Interval	3961
Top Log Interval	3100
Casing Driller	8.625 @ 218
Casing Logger	216
Bit Size	7.875
Type Fluid in Hole	Chemical
Salinity, ppm CL	8,900
Density / Viscosity	9.1 57
pH / Fluid Loss	11.5 6.8
Source of Sample	Flowline
Rm @ Meas. Temp	1.40 @ 70
Rmf @ Meas. Temp	1.05 @ 70
Rmc @ Meas. Temp	1.89 @ 70
Source of Rmf / Rmc	Charts
Rm @ BHT	0.85 @ 116
Operating Rig Time	5 Hours
Max Rec. Temp. F	116
Equipment Number	15
Location	Hays
Recorded By	B. Becker
Witnessed By	Paul Gunzelman

<<< Fold Here >>>

All interpretations are opinions based on inferences from electrical or other measurements and we cannot and do not guarantee the accuracy or correctness of any interpretation, and we shall not, except in the case of gross or willful negligence on our part, be liable or responsible for any loss, costs, damages, or expenses incurred or sustained by anyone resulting from any interpretation made by any of our officers, agents or employees. These interpretations are also subject to our general terms and conditions set out in our current Price Schedule.

Comments

Thank you for using Log-Tech, Inc.
(785) 625-3858

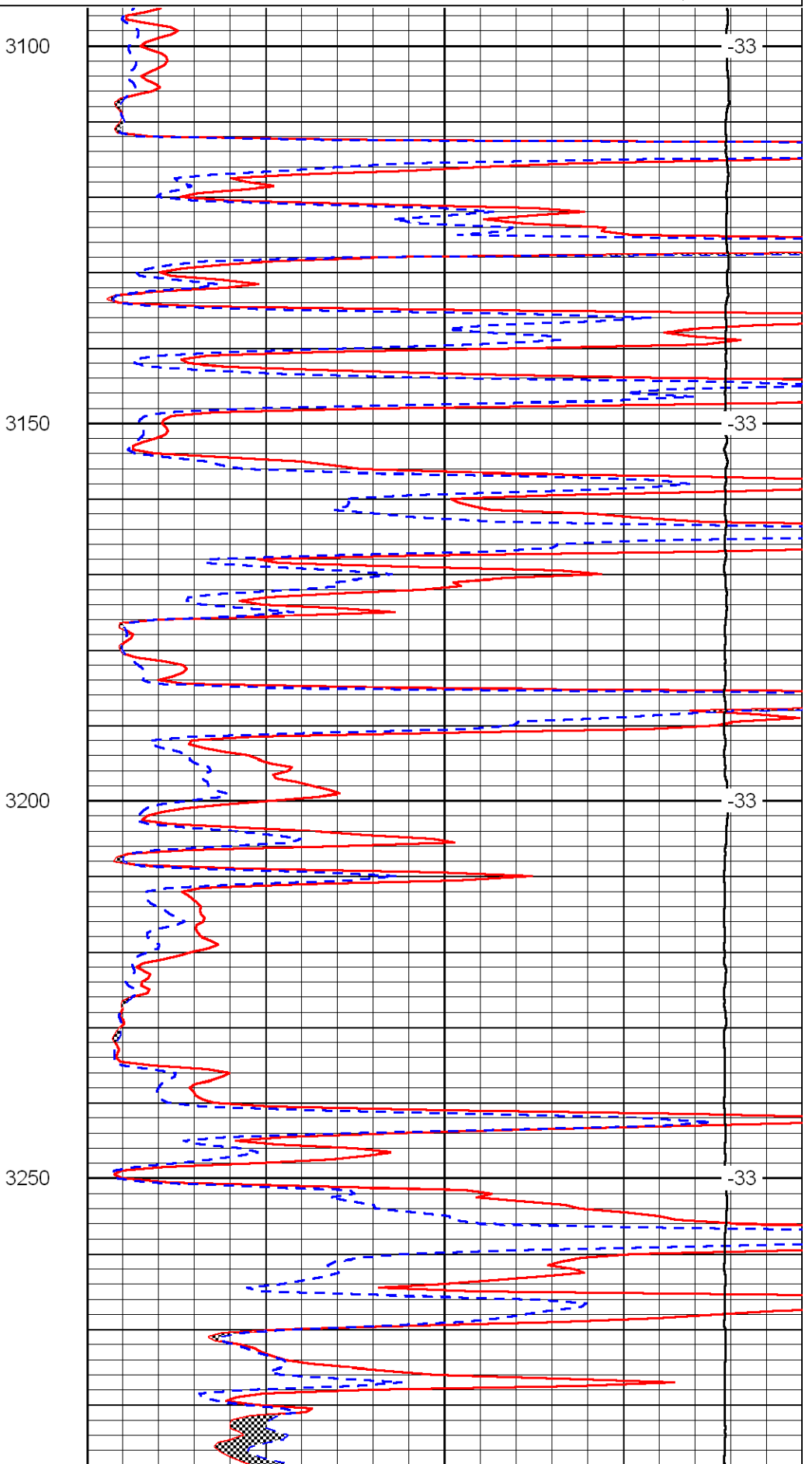
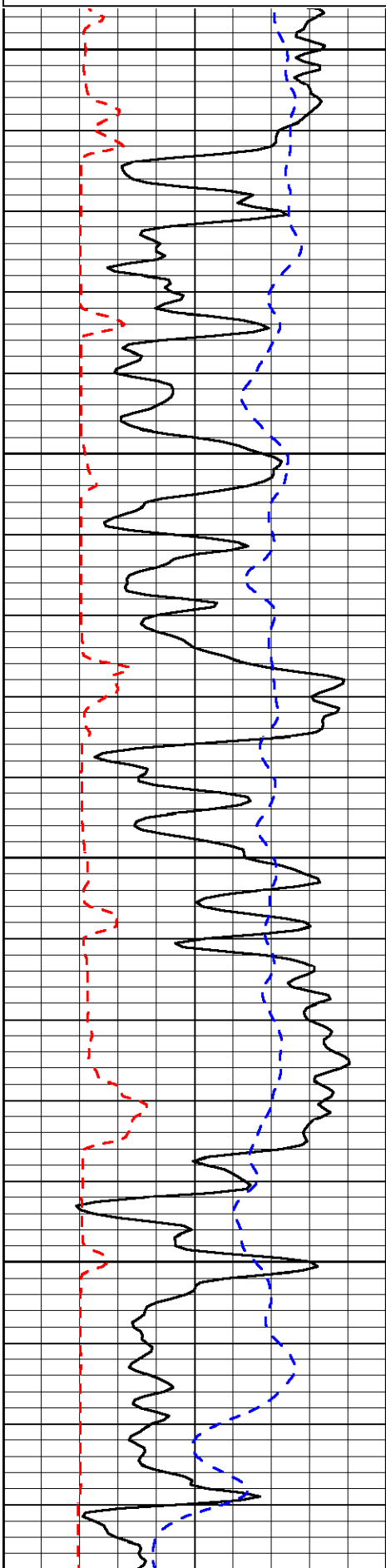
Hays, Ks; West on Golf Course Rd to Yocemento Rd;
1/2 North; West Into Location

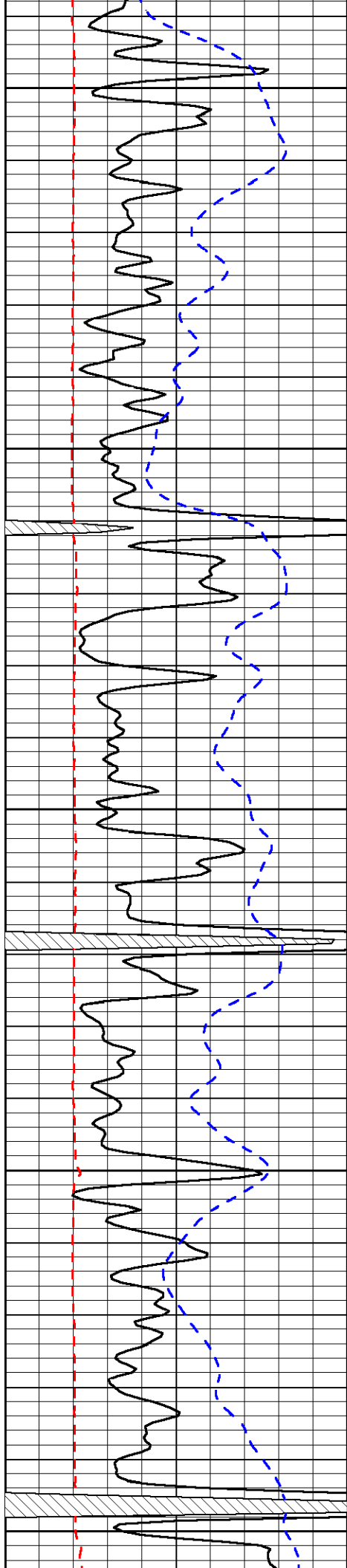
Database File: c:\warrior\data\murfin_hasellhorst #1-4\murfinhd.db
 Dataset Pathname: DIL/murfstk2
 Presentation Format: micro
 Dataset Creation: Fri Jan 15 17:40:40 2010
 Charted by: Depth in Feet scaled 1:240

0	Gamma Ray	150
6	Micro Log Caliper (in)	16
-200	SP (MV)	0

0	Micro Inverse 1 X 1 (Ohm-m)	40
0	Micro Normal 2" (Ohm-m)	40
15000	Line Weight (lb)	0

LSPD
(ft/min)





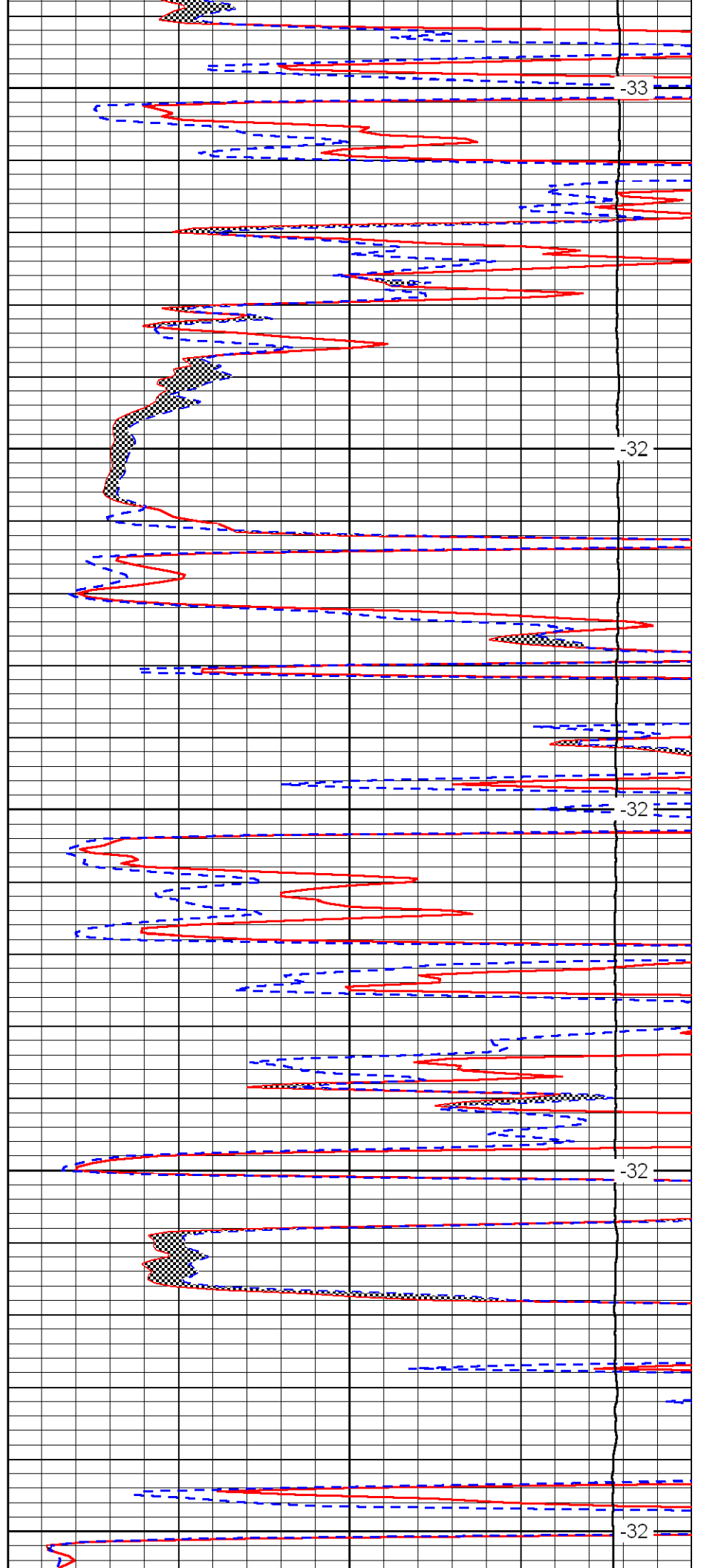
3300

3350

3400

3450

3500



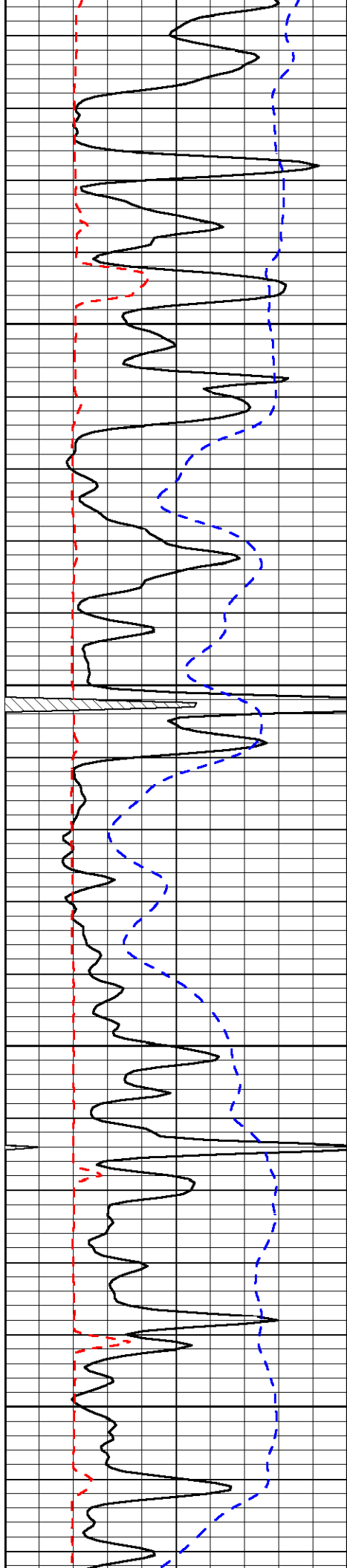
-33

-32

-32

-32

-32

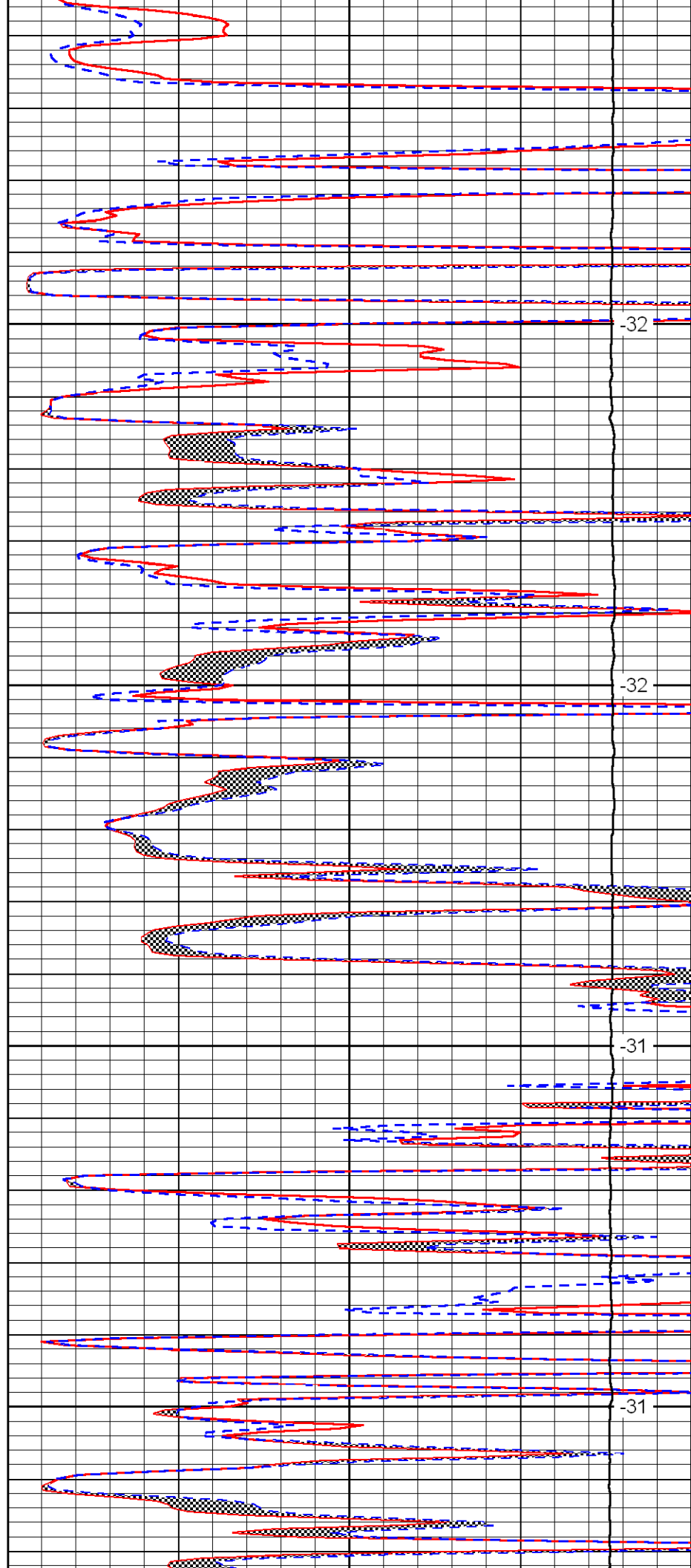


3550

3600

3650

3700

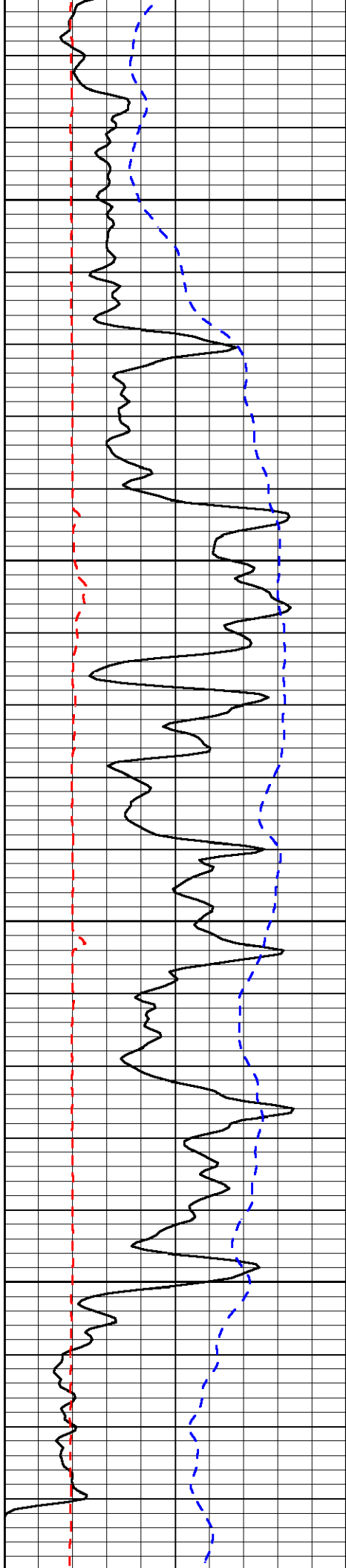


-32

-32

-31

-31

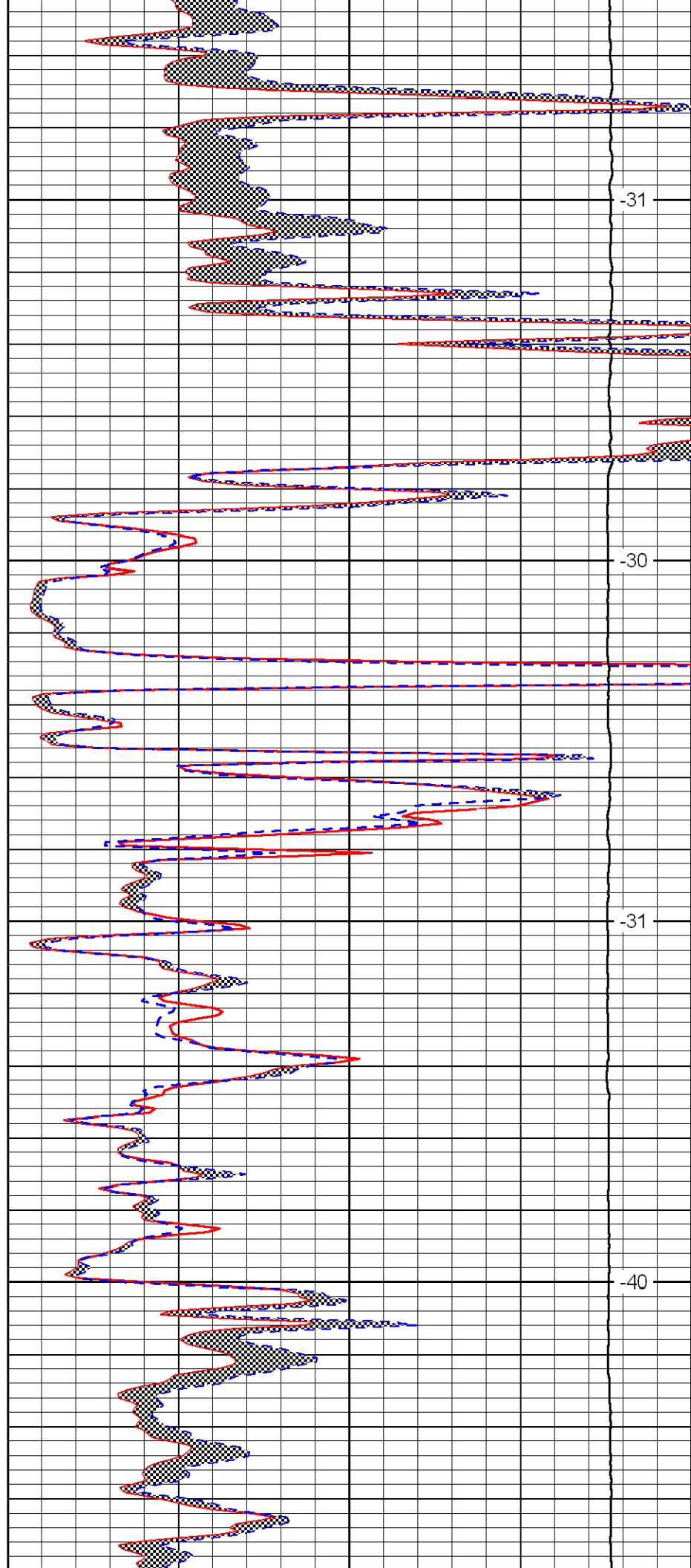


3750

3800

3850

3900

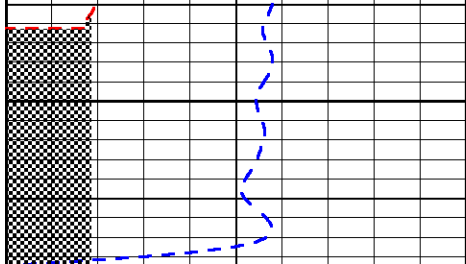


-31

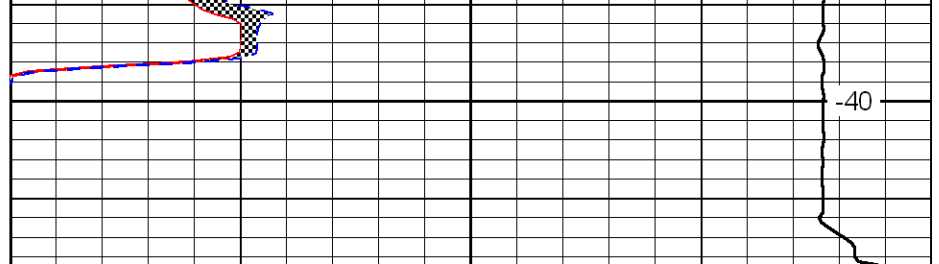
-30

-31

-40



3950



0	Gamma Ray	150
6	Micro Log Caliper (in)	16
-200	SP (MV)	0

0	Micro Inverse 1 X 1 (Ohm-m)	40
0	Micro Normal 2" (Ohm-m)	40
15000	Line Weight (lb)	0

LSPD
(ft/min)