



MIDWEST SURVEYS
 LOGGING - PERFORATING - CONSULTING SERVICES
 P.O. Box 68, Oswatimie, KS 68064
 913 / 755 - 2128

GAMMA RAY / NEUTRON / CCL

File No. _____

Company **Colt Energy, Inc.**

Well **Cline No. D-1**

Field **Iola**

County **Allen**

State **Kansas**

Location **2401 FNL & 200' FEL**

Other Services **Perforate**

Sec. **16** Twp. **24S** Rge. **18E**

Permanent Datum **GL** Elevation **957'**

Log Measured From **GL** K.B. **NA**

Drilling Measured From **GL** D.F. **NA**

Date **12-21-2010**

Run Number **One**

Depth Driller **872.5**

Bottom Logged Interval **866.5**

Fluid Level **20.0**

Fluid Level **Full**

Type Fluid **Water**

Density / Viscosity **NA**

Salinity - PPM Cl **NA**

Max. Recorded Temp **NA**

Estimated Cement Top **0.0**

Equipment No. **107** Location **Oswatimie**

Recorded By **Steve Mandich**

Missused By **Rev. Ashlock**

RUN **BORE-HOLE RECORD**

No. **BIT** **TO** **SIZE** **WGT** **FROM** **TO**

One **12.25"** **0.0** **8.825"** **34.0** **0.0** **34.25**

Two **6.75"** **34.0** **8.725** **4.50"** **10.5 #** **0.0**

Flapper **Set** **At** **866.0**

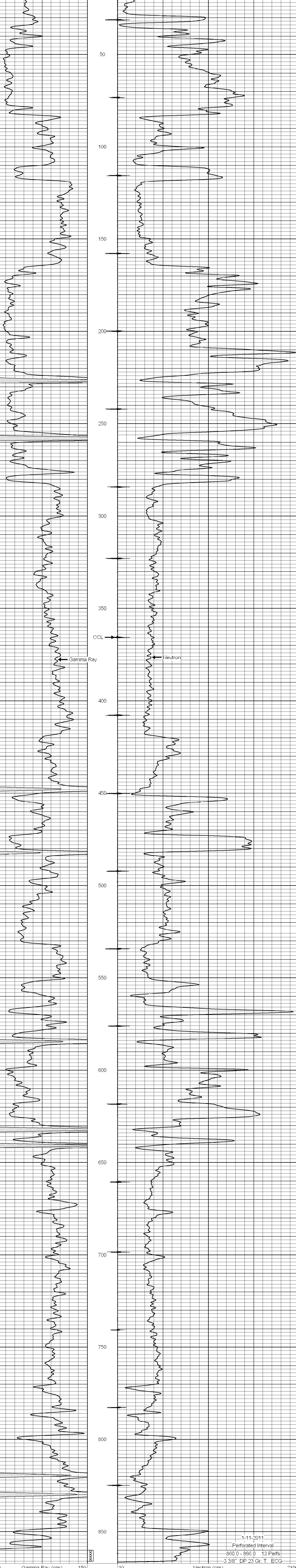
<<< Fold Here >>>

All interpretations are opinions based on inferences from electrical or other measurements and we cannot and do not guarantee the accuracy or correctness of any interpretation, and we shall not, except in the case of gross or willful negligence on our part, be liable or responsible for any loss, costs, damages, or expenses incurred or sustained by anyone resulting from any interpretation made by any of our officers, agents or employees. These interpretations are also subject to our general terms and conditions set out in our current Price Schedule.

Comments

Drilling Contractor :
Kurt Finney Drilling Company

Database File: cline1d.db
 Dataset Pathname: pass1
 Presentation Format: gr-n-ccl
 Dataset Creation: Tue Dec 21 14:15:02 2010 by Log Std Casedhole 07122
 Charted by: Depth in Feet scaled 1:240



1-11-2011
 Perforated Interval
 860.0 - 866.0 13 Perfs
 3.3/8" DP 23 Gr. T. ECG