



**MIDWEST SURVEYS**  
 LOGGING - PERFORATING - CONSULTING SERVICES  
 P.O. Box 68, Osawatomie, KS 66064  
 913.735.2128

**GAMMA RAY / NEUTRON / CCL**

File No.

Company **Colt Energy, Inc.**

Well **Cline No. D-3**

Field **Iola**

County **Allen**

State **Kansas**

Location **165' FNL & 825' FEL**

Other Services **Perforate**

Sec. **16** Twp. **24S** Rge. **18E**

Permanent Datum **GL** Elevation **973'**

Log Measured From **GL** K.B. **NA**

Drilling Measured From **GL** D.F. **NA**

Date **12-29-2010** Elevation **GL 973'**

Run Number **One**

Depth Logger **883.0**

Bottom Logged Interval **874.0**

Top Log Interval **20.0**

Fluid Level **Full**

Type Fluid **Water**

Density / Viscosity **NA**

Salinity - PPM Cl **NA**

Max. Recorded Temp **NA**

Estimated Cement Top **0.0**

Equipment No. **104** **Oswatimie**

Recorded By **Gary Winkisch**

Missused By **Per. Ashlock**

BOREHOLE RECORD		CASING RECORD	
NO.	BIT FROM TO	SIZE	WT FROM TO
One	12.25" 0.0 21.5	8.525"	19.0# 0.0
Two	6.75" 21.5 833.0	4.50"	10.5# 0.0
			883.15
			878.3

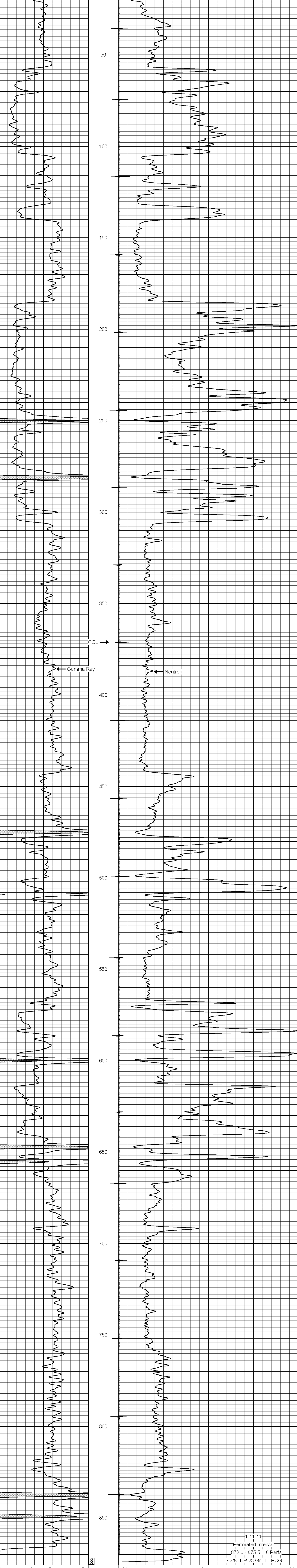
<<< Fold Here >>>

All interpretations are opinions based on inferences from electrical or other measurements and we cannot and do not guarantee the accuracy or correctness of any interpretation, and we shall not, except in the case of gross or willful negligence on our part, be liable or responsible for any loss, costs, damages, or expenses incurred or sustained by anyone resulting from any interpretation made by any of our officers, agents or employees. These interpretations are also subject to our general terms and conditions set out in our current Price Schedule.

**Comments**

Drilling Contractor :  
**Kurt Finney Drilling Company**

Database File: **cline3d.db**  
 Dataset Pathname: **pass1**  
 Presentation Format: **gr-n-ccl**  
 Dataset Creation: **Wed Dec 29 09:39:50 2010 by Log Warrior Version 6.6**  
 Charted by: **Depth in Feet scaled 1:240**



1-11-11  
 Perforated Interval  
 872.0 - 875.5 8 Perfs.  
 3 3/8" DP 23 Gr. T. ECG