



Dual Compensated Porosity Log

DIGITAL LOG (785) 625-3858

API No. 15-007-23,416-00-00

Company Val Energy, Inc.
Well Rose Trust No. 2-32
Field Wildcat
County Barber
State Kansas

Location 395' FNL & 545' FEL

Sec: 32 Twp: 34 S Rge: 11 W

Other Services
DIL
MEL

Permanent Datum Ground Level Elevation 1411
Log Measured From Kelly Bushing 11 Ft. Above Perm. Datum
Drilling Measured From Kelly Bushing

K.B. 1422
D.F. 1411
G.L. 1411

Date 1/20/2009

Run Number One

Type Log CNL / CDL

Depth Driller 4900

Depth Logger 4898

Bottom Logged Interval 4877

Top Logged Interval 3000

Type Fluid In Hole Chemical

Salinity, PPM CL 6,000

Density 9.3

Level Full

Max. Rec. Temp. F 127

Operating Rig Time 4 1/2 Hours

Equipment -- Location 4 Hays

Recorded By K. Bange

Witnessed By Steve Van Buskirk

Run No	Bit	Borehole Record		Casing Record	
		From	To	From	To
1	12.25	00	727	8.625	24#
2	7.875	727	4900		

<<< Fold Here >>>

All interpretations are opinions based on inferences from electrical or other measurements and we cannot and do not guarantee the accuracy or correctness of any interpretation, and we shall not, except in the case of gross or willful negligence on our part, be liable or responsible for any loss, costs, damages, or expenses incurred or sustained by anyone resulting from any interpretation made by any of our officers, agents or employees. These interpretations are also subject to our general terms and conditions set out in our current Price Schedule.

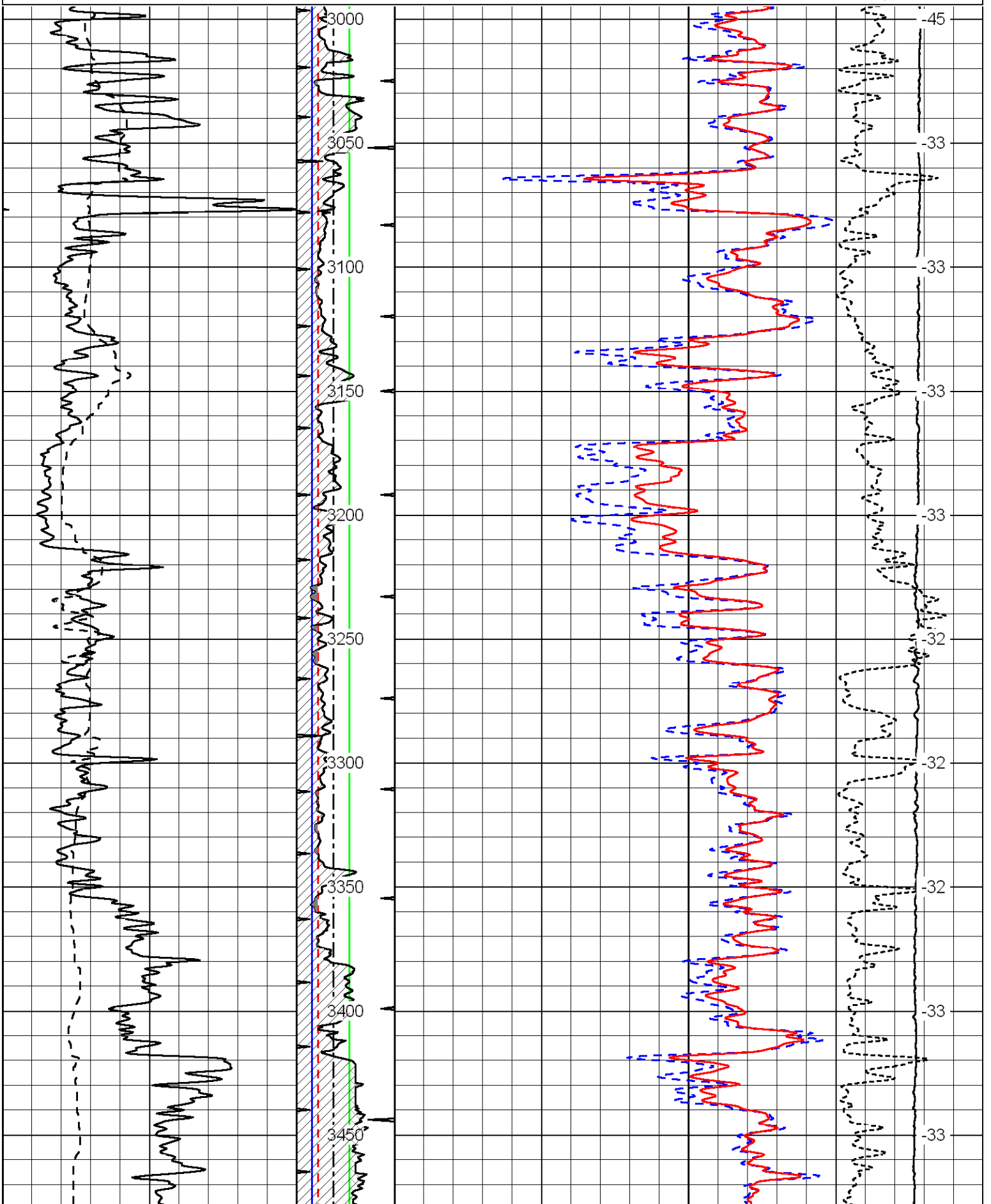
Comments

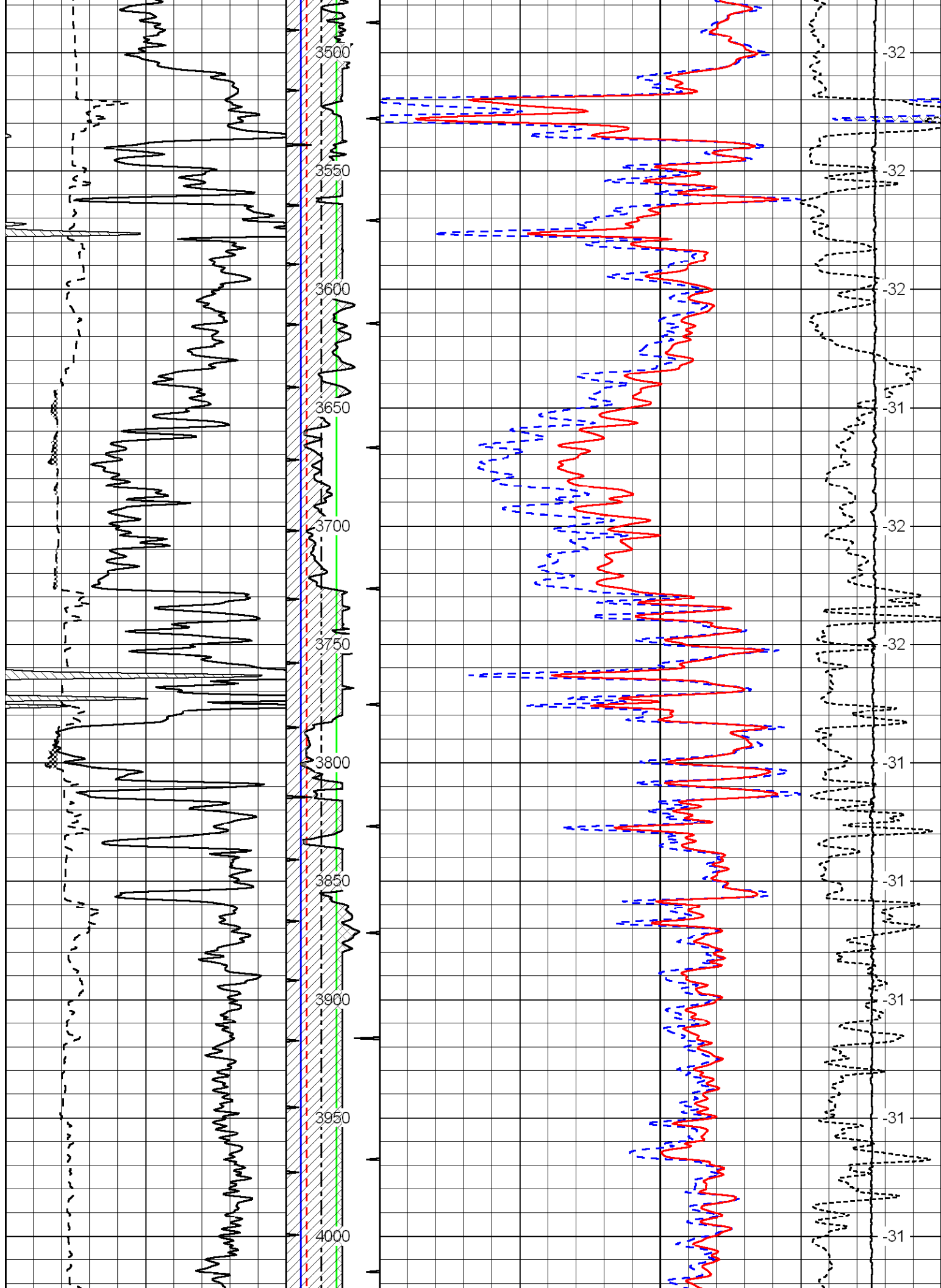
Thank you for using Log-Tech, Inc.
(785) 625-3858

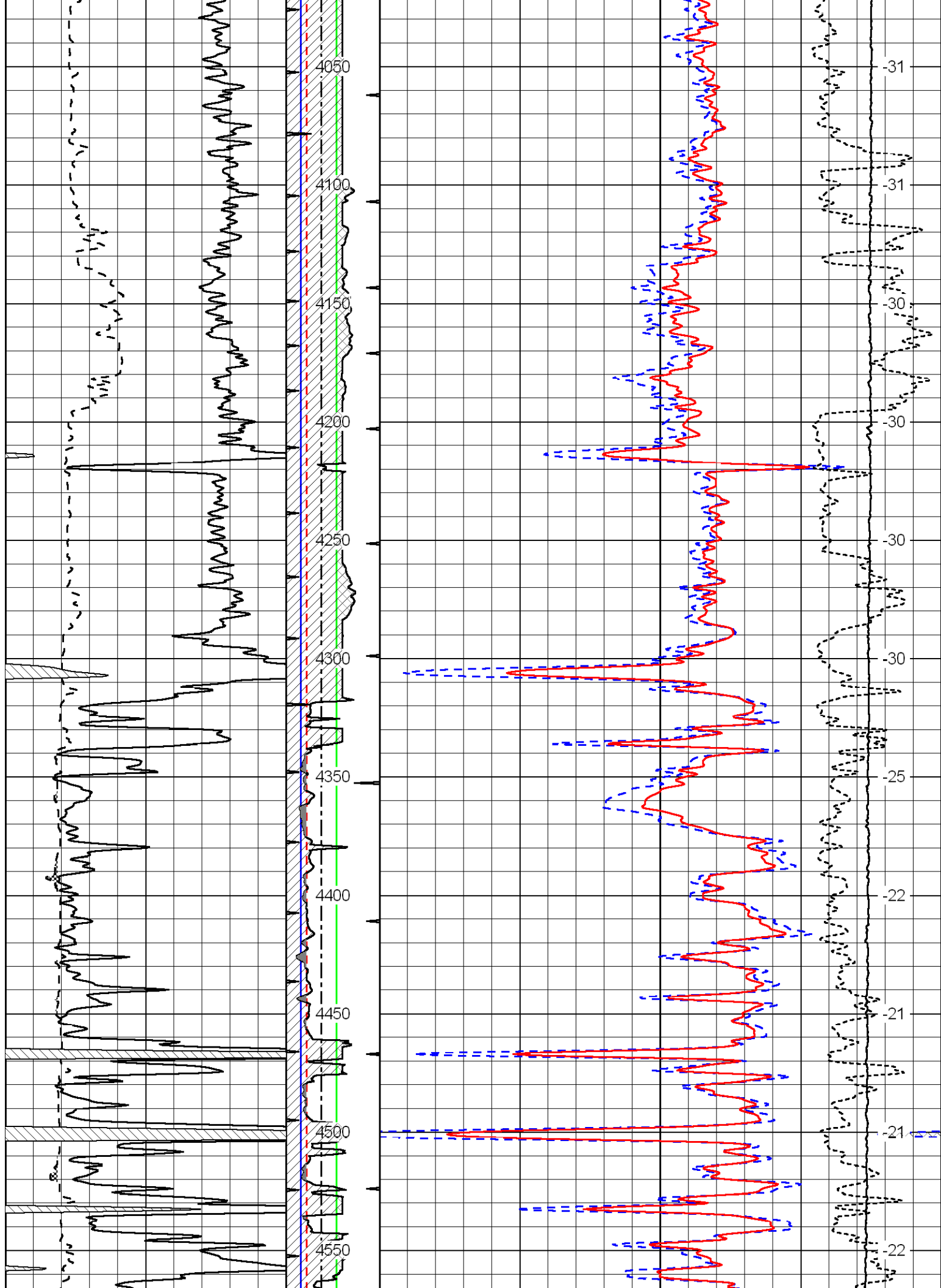
Med. Lodge S. to Hwy 2, 2 E. to Northstar rd, 1 3/4 N, W into

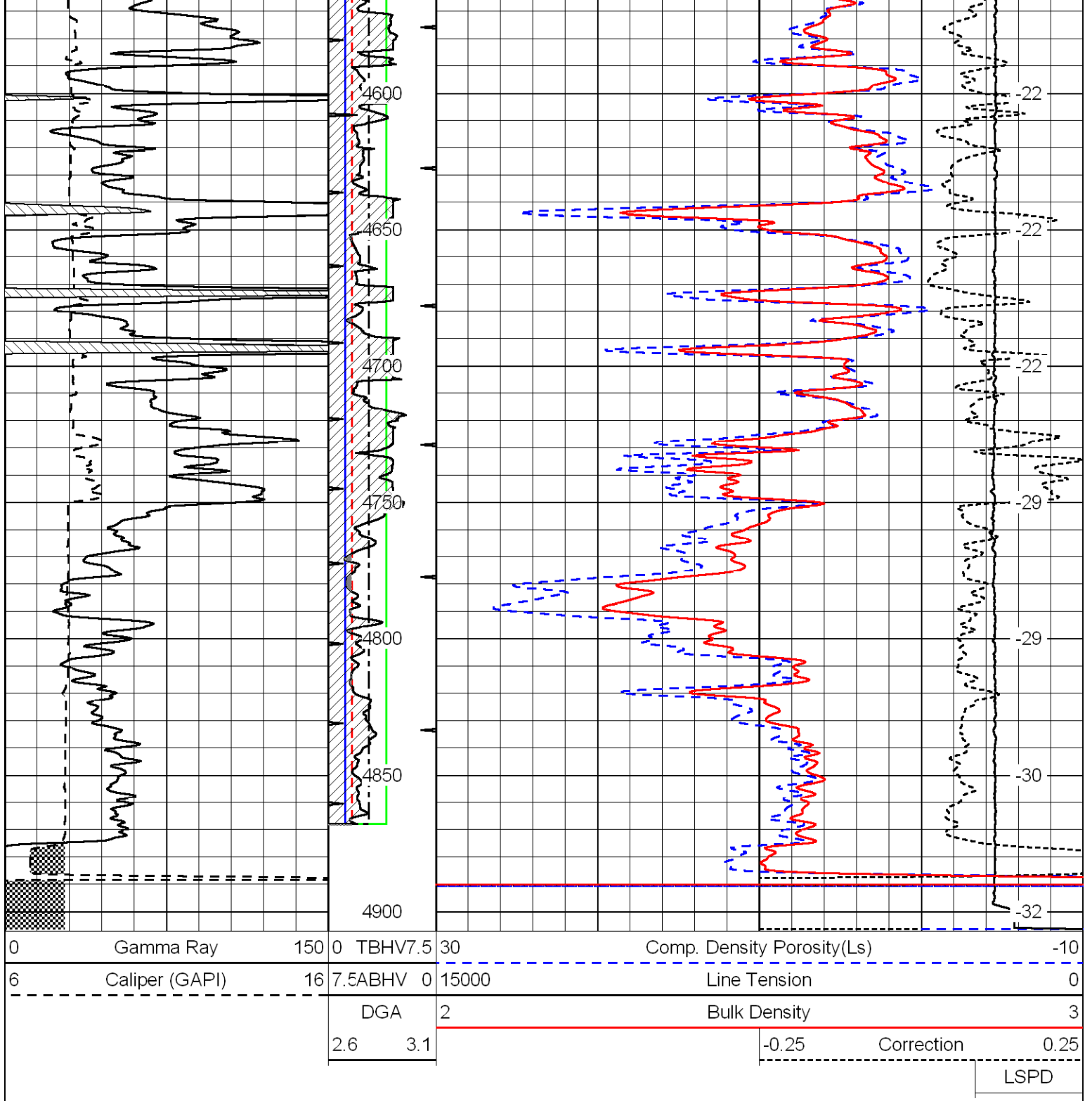
Database File: c:\warrior\data\val_rose trust no. 2-32\valhd.db
 Dataset Pathname: dil\val2in
 Presentation Format: cdldga
 Dataset Creation: Tue Jan 20 16:40:07 2009
 Charted by: Depth in Feet scaled 1:600

0	Gamma Ray	150	0	TBHV	7.5	30	Comp. Density Porosity(Ls)	-10	
6	Caliper (GAPI)	16	7.5	ABHV	0	15000	Line Tension	0	
			DGA	2			Bulk Density	3	
			2.6	3.1			-0.25	Correction	0.25
								LSPD	









Database File: c:\warrior\data\val_rose trust no. 2-32\valhd.db
 Dataset Pathname: dil\val2in
 Presentation Format: ducpdga
 Dataset Creation: Tue Jan 20 16:40:07 2009
 Charted by: Depth in Feet scaled 1:240

