



**SUPERIOR**  
**Hays,**  
**Kansas**

**COMPENSATED**  
**DENSITY/NEUTRON**  
**PE LOG**

Company: BEREXCO, INC.  
 Well: DENTON #1-15  
 Field: WILDCAT  
 County: CLARK  
 State: KANSAS

Company: BEREXCO, INC.  
 Well: DENTON #1-15  
 Field: WILDCAT  
 County: CLARK  
 State: KANSAS

Location: API #: 15-025-21477-0000  
 147°FNL & 1132'FEL  
 NW NW NE NE  
 SEC 15 TWP 31S RGE 24W  
 Permanent Datum: GROUND LEVEL Elevation: 2549  
 Log Measured From: KELLY BUSHING 13' A.G.L.  
 Drilling Measured From: KELLY BUSHING  
 Other Services: DIL MEL/SONIC  
 Elevation: K.B. 2562 D.F. 2560 G.L. 2549

|                              |              |                 |  |
|------------------------------|--------------|-----------------|--|
| Date                         | 30 DEC 08    |                 |  |
| Run Number                   | ONE          |                 |  |
| Depth Driller                | 5680         |                 |  |
| Depth Logger                 | 5686         |                 |  |
| Bottom Logged Interval       | 5662         |                 |  |
| Top Log Interval             | 4000         |                 |  |
| Casing Driller               | 8 5/8 @ 770' |                 |  |
| Casing Logger                | 764'         |                 |  |
| Bit Size                     | 7 7/8        |                 |  |
| Type Fluid In Hole           | CHEMICAL MUD |                 |  |
| Density / Viscosity          | 8.9/53       | CHLORIDES 6,000 |  |
| pH / Fluid Loss              | 11.0/6.4     |                 |  |
| Source of Sample             | FLOWLINE     |                 |  |
| Rm @ Meas. Temp              | 0.52 @ 65    |                 |  |
| Rmf @ Meas. Temp             | 0.39 @ 65    |                 |  |
| Rmc @ Meas. Temp             | 0.62 @ 65    |                 |  |
| Source of Rmf / Rmc          | CAL/CAL      |                 |  |
| Rm @ BHT                     | 0.26 @ 131F  |                 |  |
| Time Circulation Stopped     | 2 HOURS      |                 |  |
| Time Logger on Bottom        | 4:50 AM      |                 |  |
| Maximum Recorded Temperature | 131F         |                 |  |
| Equipment Number             | 680          |                 |  |
| Location                     | HAYS, KS     |                 |  |
| Recorded By                  | DUGAN DENTON | JOE CRATHORNE   |  |
| Witnessed By                 | BRYAN BYNOG  | G. KORALEGEDARA |  |

<<< Fold Here >>>

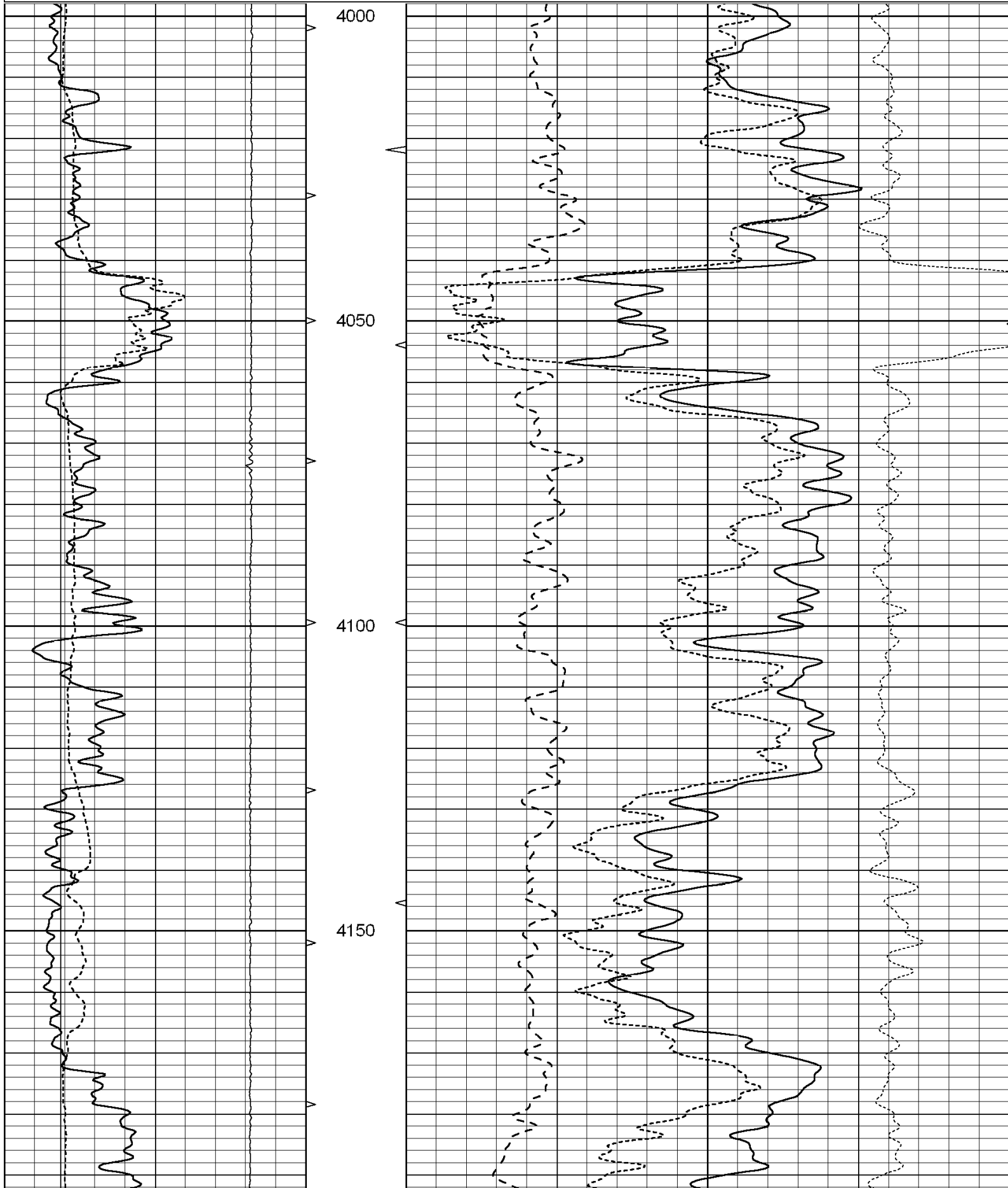
All interpretations are opinions based on inferences from electrical or other measurements and we cannot and do not guarantee the accuracy or correctness of any interpretation, and we shall not, except in the case of gross or willful negligence on our part, be liable or responsible for any loss, costs, damages, or expenses incurred or sustained by anyone resulting from any interpretation made by any of our officers, agents or employees. These interpretations are also subject to our general terms and conditions set out in our current Price Schedule.

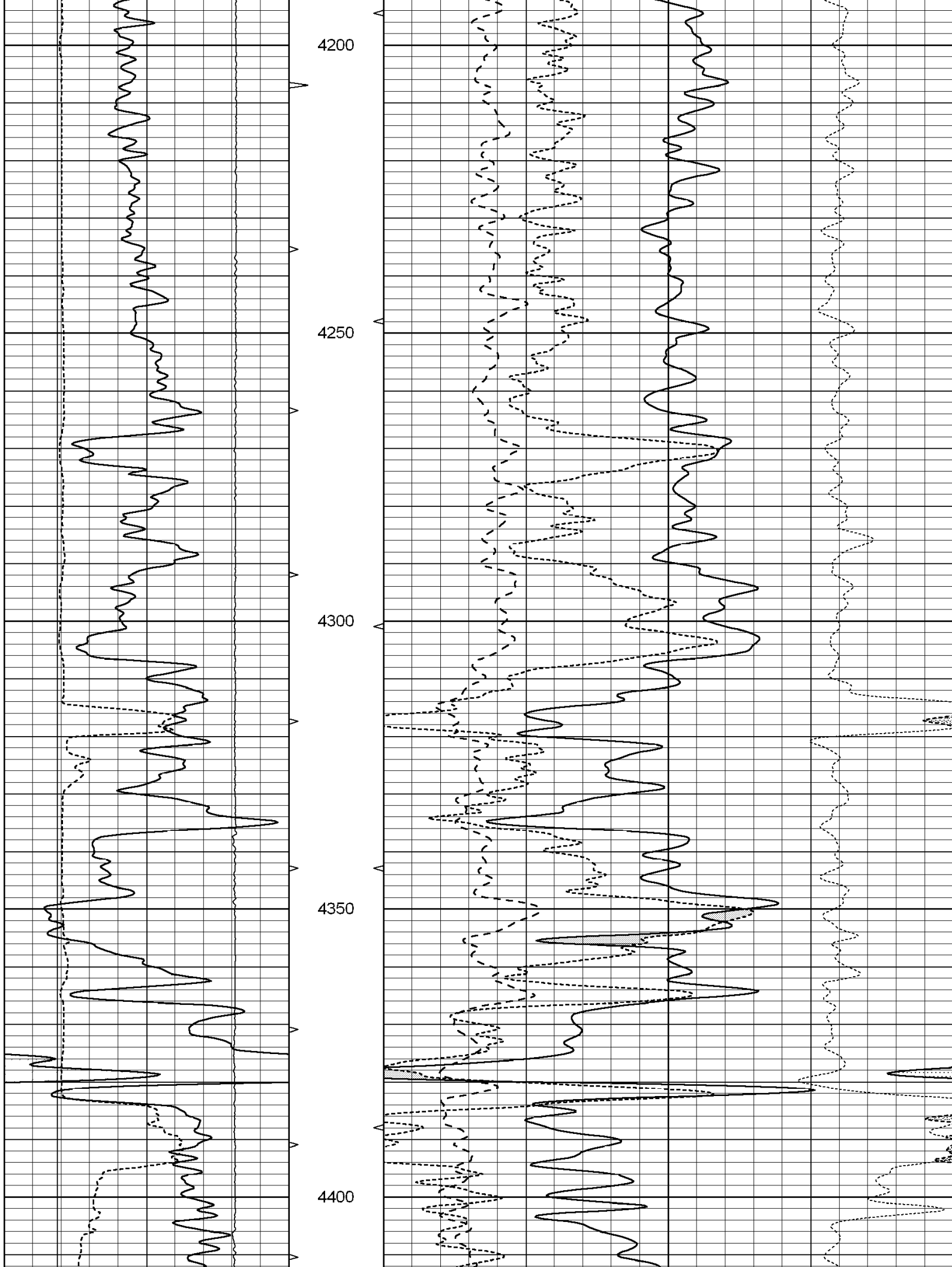
**Comments**

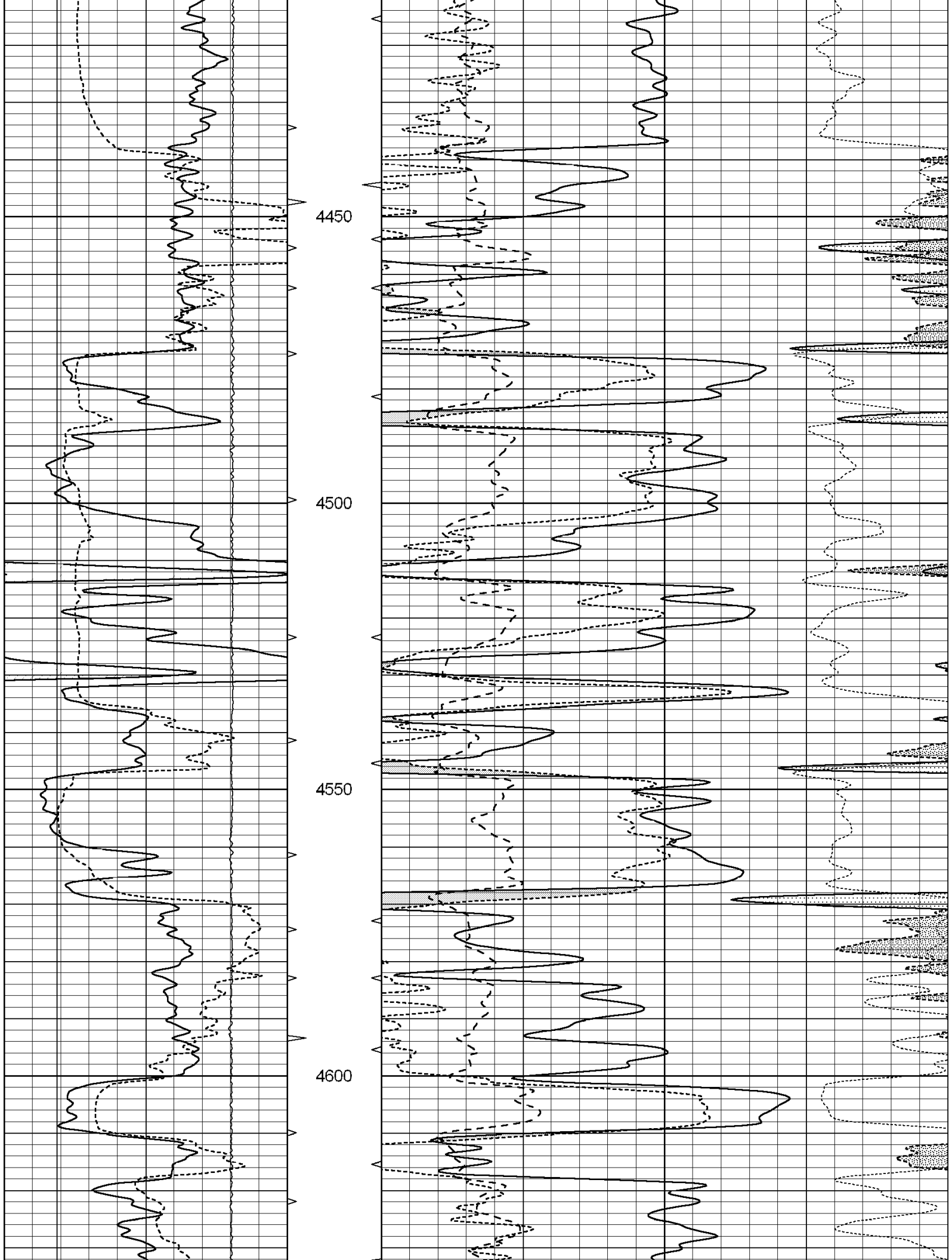
THANK YOU FOR USING SUPERIOR WELL SERVICES  
 HAYS, KS. 785-628-6395

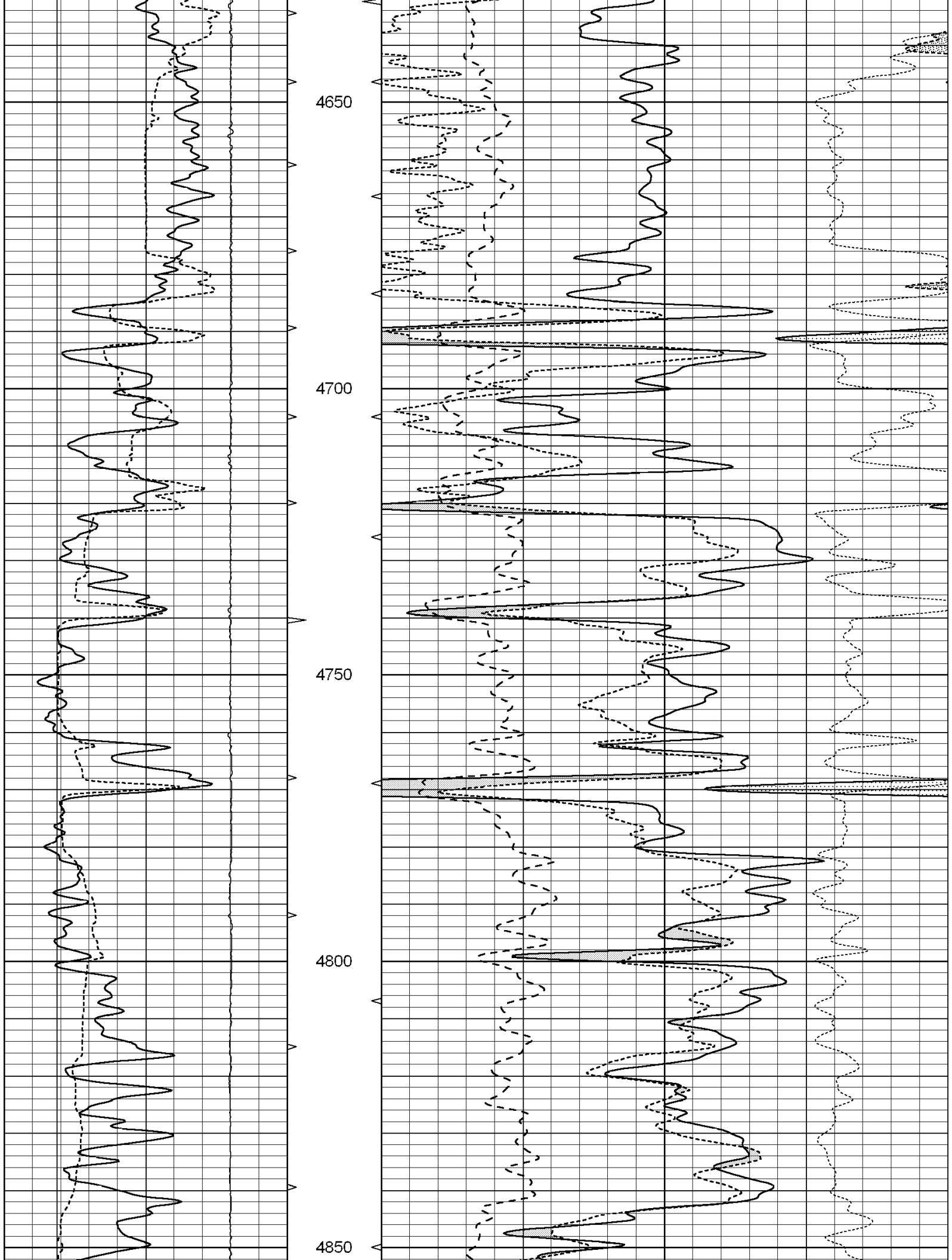
DIRECTIONS: MINNEOLA; 6 MILES SOUTH TO ROAD "I", 5 MILES EAST, SOUTH INTO

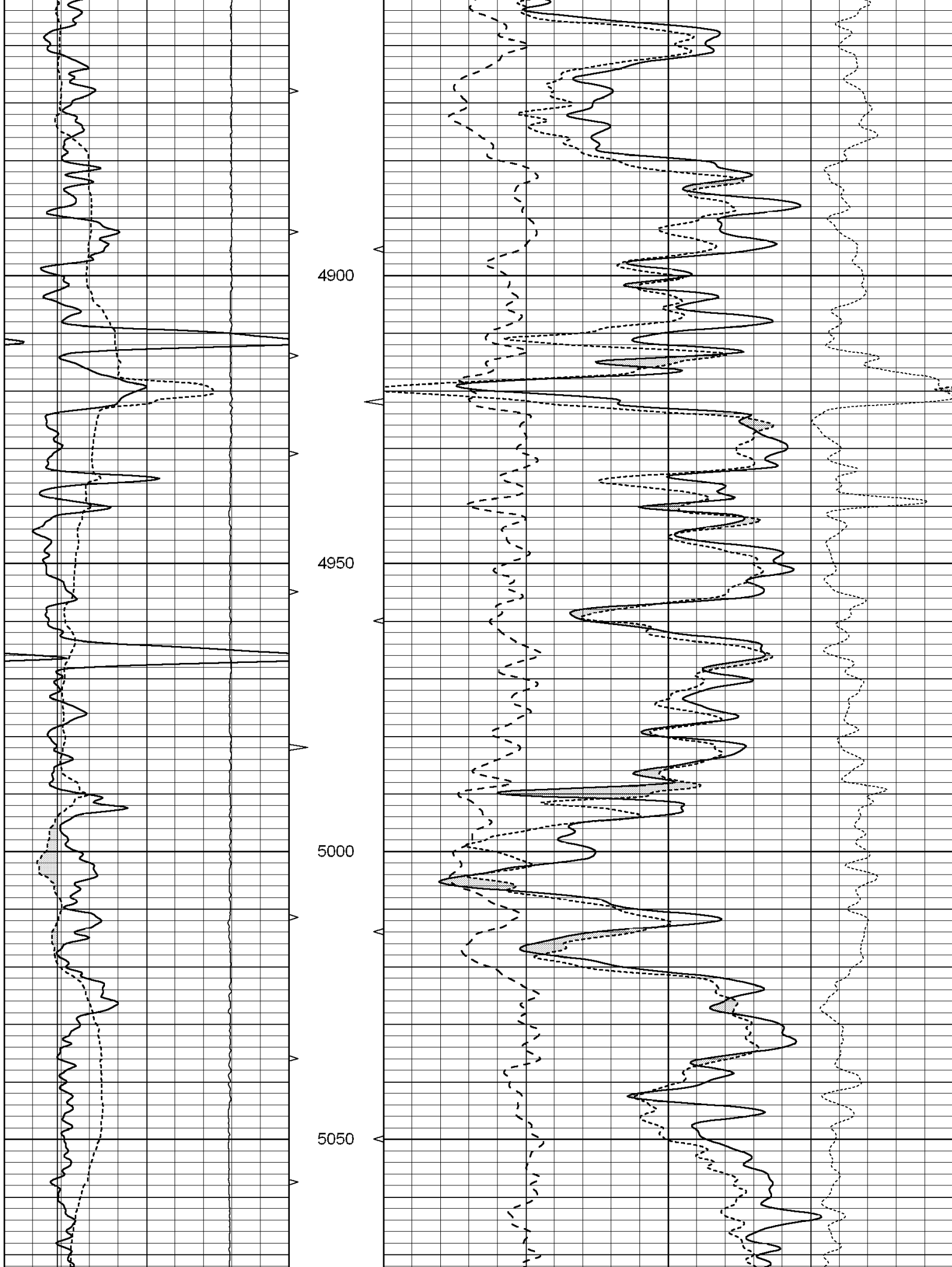
|       |                  |     |            |    |                          |    |       |                        |
|-------|------------------|-----|------------|----|--------------------------|----|-------|------------------------|
| 0     | GAMMA RAY (GAPI) | 150 | ABHV       | 30 | COMPENSATED DENSITY (pu) |    |       | -10                    |
| 6     | CALIPER (in)     | 16  | 10 (ft3) 0 | 30 | COMPENSATED NEUTRON (pu) |    |       | -10                    |
| 10000 | LTEN (lb)        | 0   | TBHV       | 0  | PE                       | 10 | -0.25 | CORRECTION (g/cc) 0.25 |
|       |                  |     | 0 (ft3) 10 |    |                          |    |       |                        |

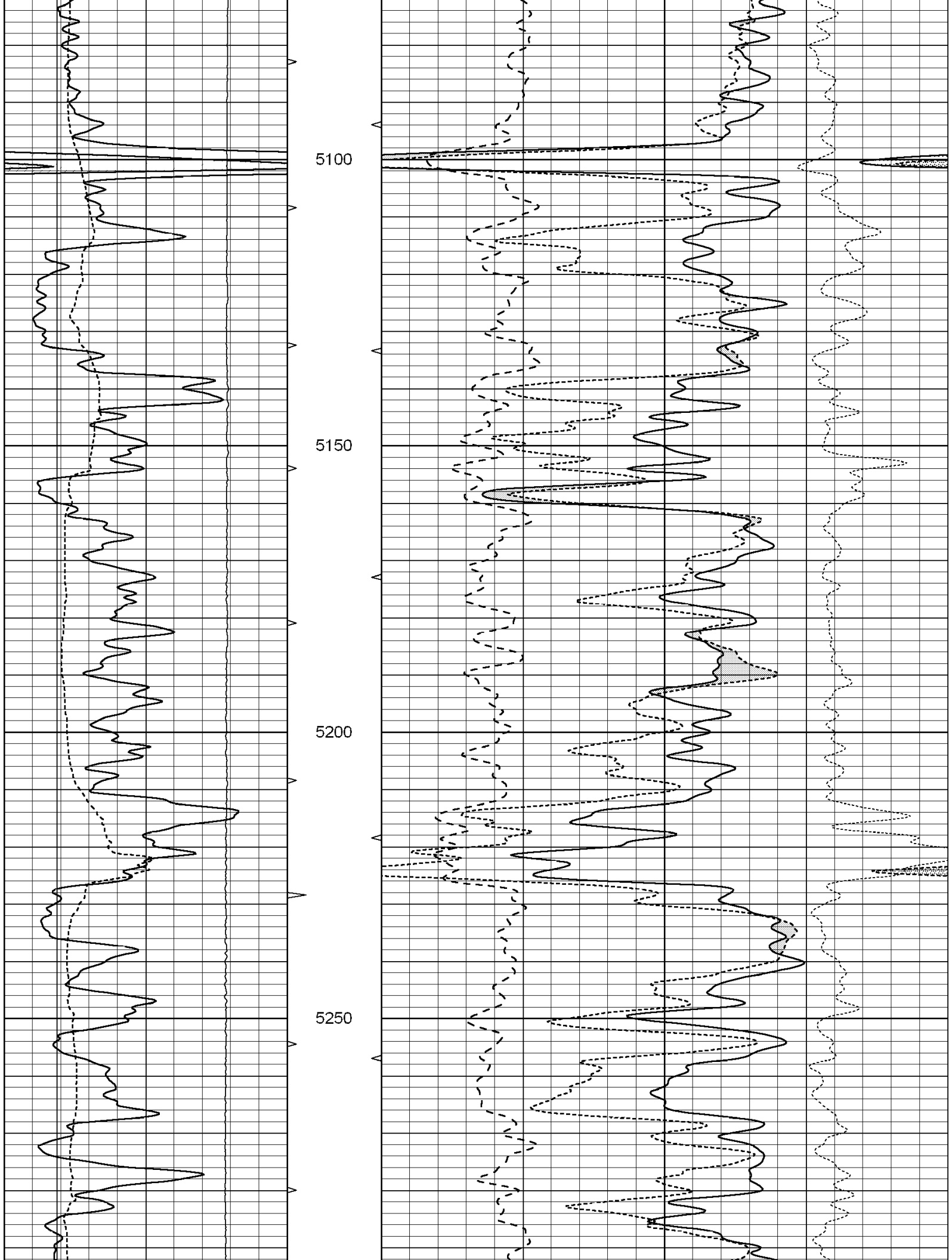


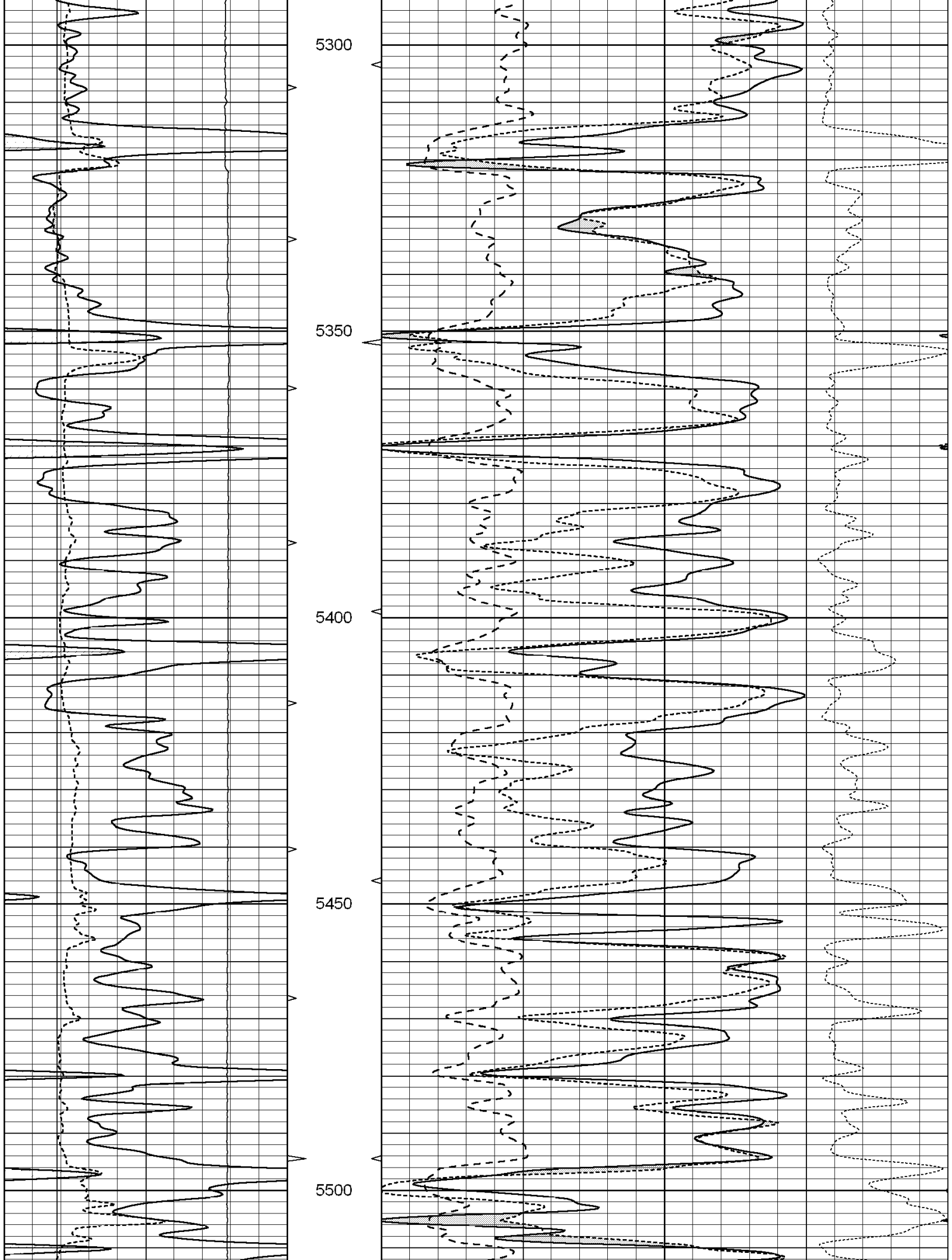




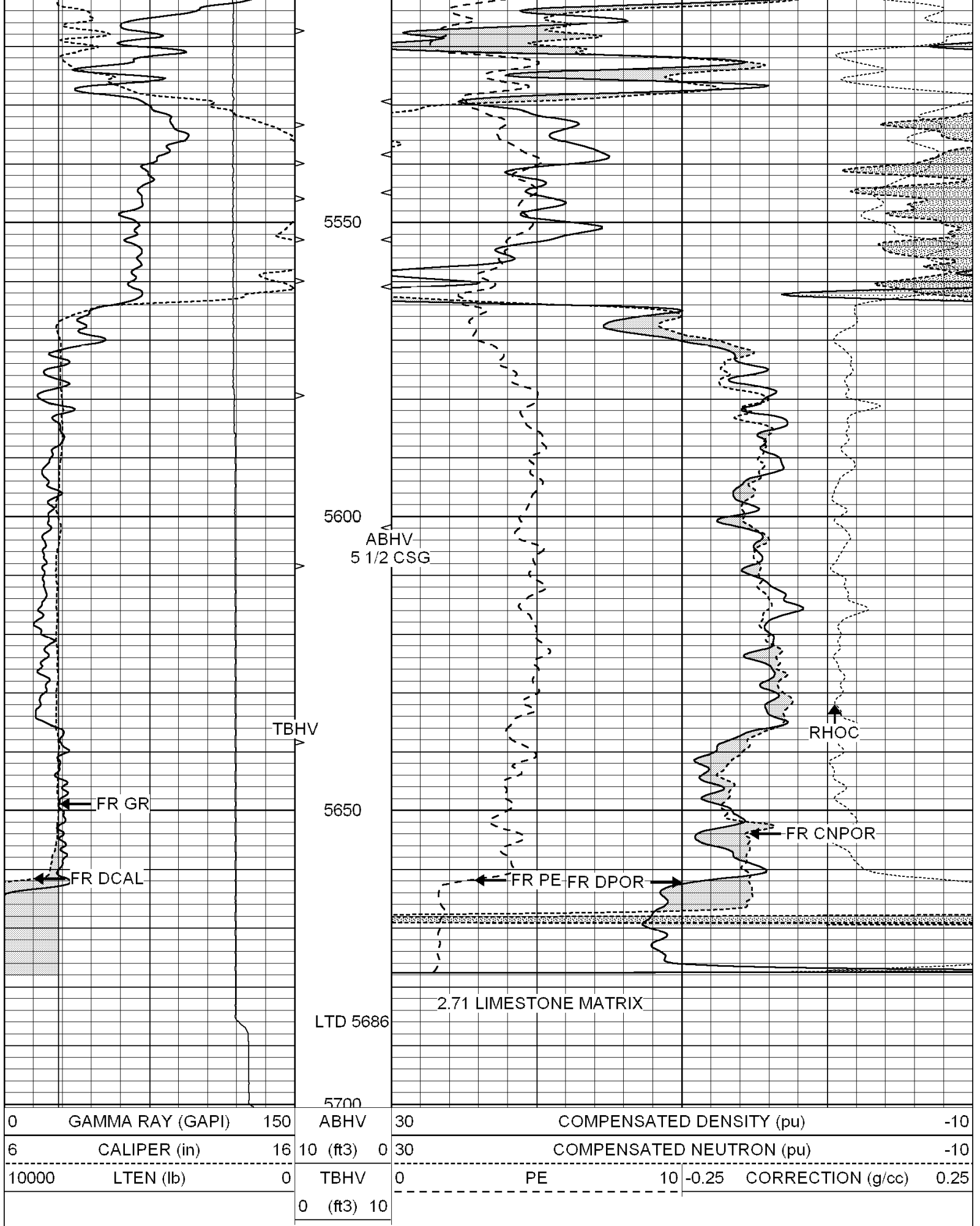












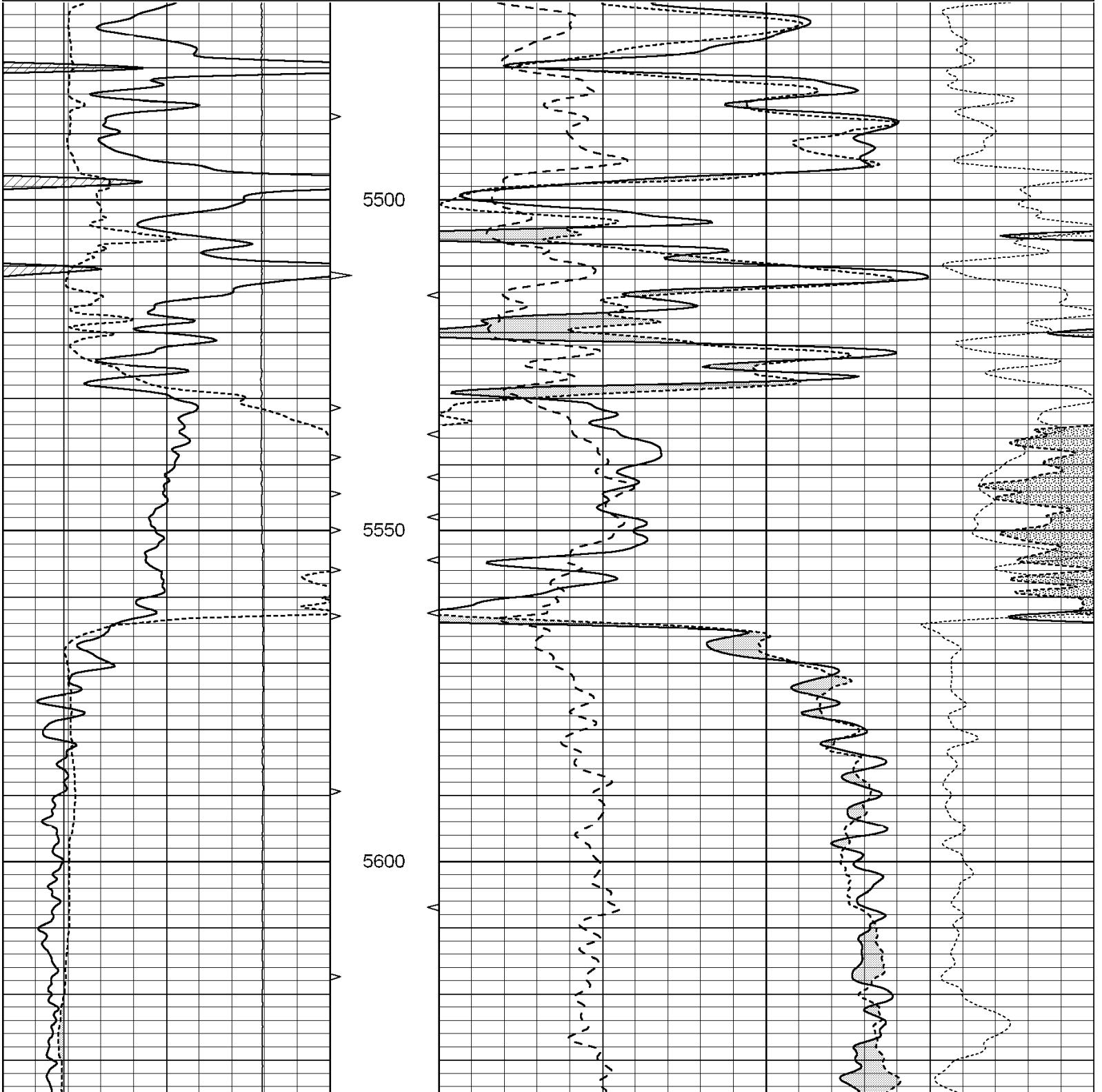


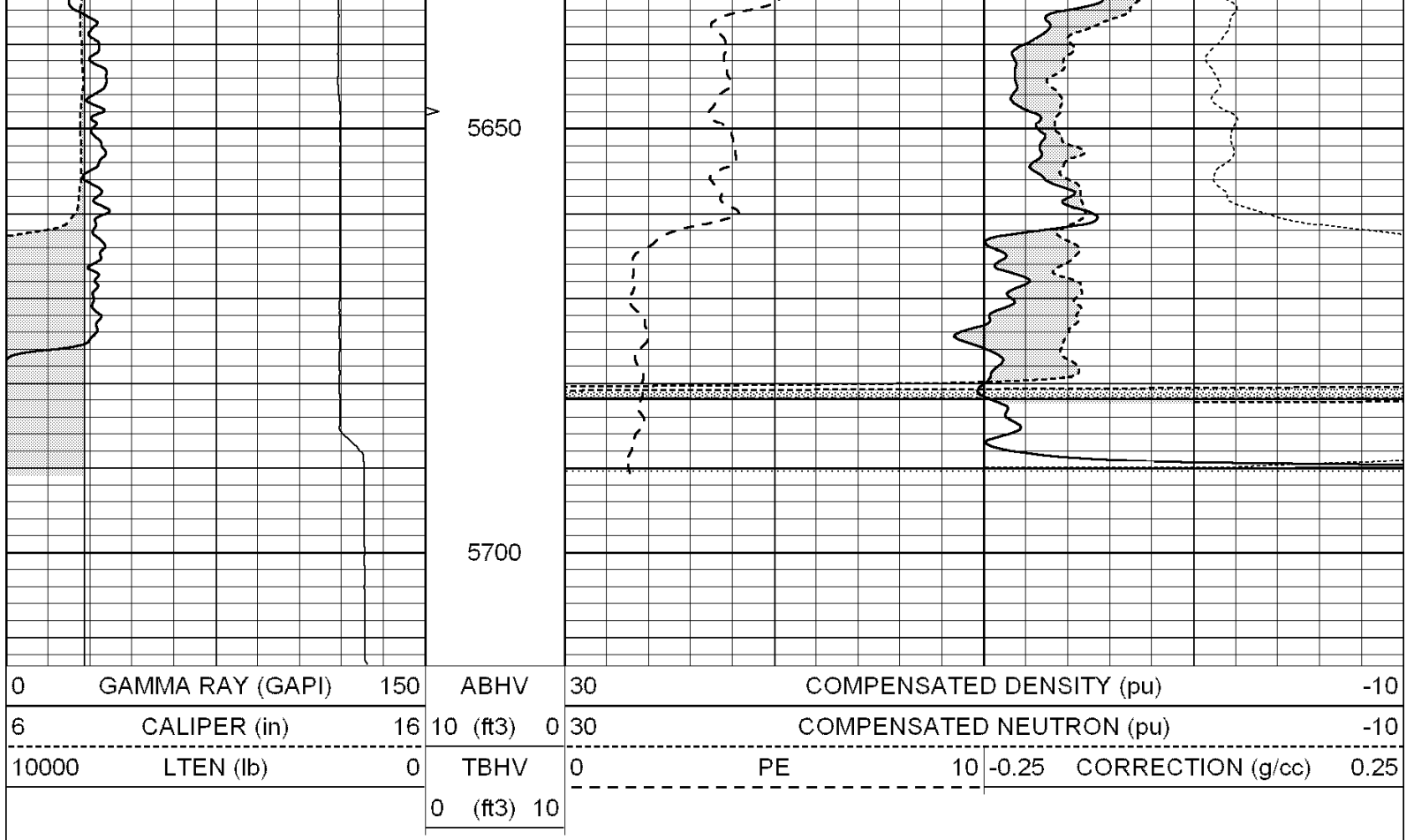
SUPERIOR  
Hays,  
Kansas

# REPEAT SECTION

Database File: 3185berexco.db  
 Dataset Pathname: pass3.5  
 Presentation Format: \_ldt\_neu  
 Dataset Creation: Tue Dec 30 05:36:25 2008 by Calc Open-Cased 070814  
 Charted by: Depth in Feet scaled 1:240

|       |                  |     |            |    |                          |                                 |
|-------|------------------|-----|------------|----|--------------------------|---------------------------------|
| 0     | GAMMA RAY (GAPI) | 150 | ABHV       | 30 | COMPENSATED DENSITY (pu) | -10                             |
| 6     | CALIPER (in)     | 16  | 10 (ft3) 0 | 30 | COMPENSATED NEUTRON (pu) | -10                             |
| 10000 | LTEN (lb)        | 0   | TBHV       | 0  | PE                       | 10 -0.25 CORRECTION (g/cc) 0.25 |
|       |                  |     | 0 (ft3) 10 |    |                          |                                 |





### Calibration Report

Database File: 3185berexco.db  
 Dataset Pathname: pass3.5  
 Dataset Creation: Tue Dec 30 05:36:25 2008 by Calc Open-Cased 070814

### Dual Induction Calibration Report

Serial-Model: PROBE8-DILG  
 Surface Cal Performed: Fri Aug 01 06:33:19 2008  
 Downhole Cal Performed: Mon Jul 28 11:08:27 2008  
 After Survey Verification Performed: Mon Jul 28 11:08:27 2008

#### Surface Calibration

| Loop:     | Readings |       |   |       | References |        | Results |         |
|-----------|----------|-------|---|-------|------------|--------|---------|---------|
|           | Air      | Loop  |   |       | Air        | Loop   | m       | b       |
| Deep      | 0.015    | 0.648 | V | 0.000 | 400.000    | mmho-m | 632.616 | -9.730  |
| Medium    | 0.029    | 0.796 | V | 0.000 | 464.000    | mmho-m | 605.128 | -17.682 |
| Internal: | Zero     | Cal   |   | Zero  | Cal        |        | m       | b       |
| Deep      | 0.017    | 0.657 | V | 0.000 | 400.000    | mmho-m | 625.153 | -10.619 |
| Medium    | 0.016    | 0.757 | V | 0.000 | 464.000    | mmho-m | 625.992 | -9.739  |

#### Downhole Calibration

|        | Readings |        |        |       | References |        | Results |       |
|--------|----------|--------|--------|-------|------------|--------|---------|-------|
|        | Zero     | Cal    |        |       | Zero       | Cal    | m'      | b'    |
| Deep   | 0.000    | 0.000  | mmho-m | 2.011 | 405.777    | mmho-m | 1.000   | 0.000 |
| Medium | 0.000    | 0.000  | mmho-m | 7.590 | 503.393    | mmho-m | 1.000   | 0.000 |
| LL3    |          | 7.500  | V      |       | 1500.000   | Ohm-m  |         |       |
|        |          | 0.000  | V      |       | 20.000     | Ohm-m  |         |       |
|        |          | -6.500 | V      |       | 3800.000   | mmho-m |         |       |

After Survey Verification

|        | Readings |       |        | Targets |       |        | Results |       |
|--------|----------|-------|--------|---------|-------|--------|---------|-------|
|        | Zero     | Cal   |        | Zero    | Cal   |        | m'      | b'    |
| Deep   | 0.000    | 0.000 | mmho-m | 0.000   | 0.000 | mmho-m | 0.000   | 0.000 |
| Medium | 0.000    | 0.000 | mmho-m | 0.000   | 0.000 | mmho-m | 0.000   | 0.000 |
| LL3    |          | 1.000 | Ohm-m  |         | 1.000 | Ohm-m  |         |       |
|        |          | 0.000 | Ohm-m  |         | 0.000 | Ohm-m  |         |       |
|        |          | 1.000 | mmho-m |         | 1.000 | mmho-m |         |       |

Litho Density Calibration Report  
 Serial: 002 Model: PRB  
 Performed Mon Oct 29 15:40:49 2007

Litho Density Calibration

|             | Background | Magnesium   | Aluminum | Sandstone           |         |
|-------------|------------|-------------|----------|---------------------|---------|
| Window 1    | 1056.3     | 9118.0      | 2809.7   | 10378.4             | cps     |
| Window 2    | 969.9      | 7671.9      | 2431.6   | 8565.8              | cps     |
| Window 3    | 683.8      | 2939.8      | 1161.0   | 3161.8              | cps     |
| Window 4    | 231.4      | 231.6       | 226.7    | 230.8               | cps     |
| Long Space  | 0.0        | 6702.0      | 1461.7   | 7595.9              | cps     |
| Short Space | 1.2        | 1433.6      | 959.4    | 1568.6              | cps     |
| Rho         |            | 1.7100      | 2.5900   | 1.3800              | g/cc    |
| Pe          |            |             | 2.5700   | 1.5500              |         |
| Rib Angle   | : 45.2     | Rib Slope   | : 1.008  | Density/Spine Ratio | : 0.559 |
| Spine Angle | : 75.2     | Spine Slope | : 3.791  | Spine Intercept     | : -18.7 |

Caliper

|          | Readings  | Reference |              |
|----------|-----------|-----------|--------------|
| Low Ref  | 4.1       | 14.3      |              |
| High Ref | 4.9       | 17.5      |              |
|          | Gain: 4.1 |           | Offset: -4.4 |

Compensated Neutron Calibration Report

Serial Number: 6I  
 Tool Model: G

CALIBRATION

| Detector    | Readings | Target   | Normalization |
|-------------|----------|----------|---------------|
| Short Space | 1.00 cps | 1.00 cps | 1.0000        |
| Long Space  | 1.00 cps | 1.00 cps | 1.0000        |

Gamma Ray Calibration Report

Serial Number: GR6  
 Tool Model: OPEN  
 Performed: Thu Jan 24 17:24:37 2008

Calibrator Value: 150.0 GAPI

Background Reading: 0.0 cps  
 Calibrator Reading: 350.0 cps

Sensitivity: 0.5586 GAPI/cps