



SUPERIOR
Hays,
Kansas

MICRO
LOG

Company BEREXCO, INC.
Well DENTON #1-15
Field WILDCAT
County CLARK
State KANSAS

Company BEREXCO, INC.
Well DENTON #1-15
Field WILDCAT
County CLARK State KANSAS

Location: API # : 15-025-21477-0000
147FNL & 1132FEL
NW NW NE NE
SEC 15 TWP 31S RGE 24W
Permanent Datum GROUND LEVEL Elevation 2549
Log Measured From KELLY BUSHING 13' A.G.L.
Drilling Measured From KELLY BUSHING
Other Services
CDL/CNL/PE
DIL/SONIC
Elevation
K.B. 2562
D.F. 2560
G.L. 2549

Date	30 DEC 08		
Run Number	ONE		
Depth Driller	5680		
Depth Logger	5686		
Bottom Logged Interval	5669		
Top Log Interval	4000		
Casing Driller	8 5/8 @ 770'		
Casing Logger	764'		
Bit Size	7 7/8		
Type Fluid In Hole	CHEMICAL MUD		
Density / Viscosity	8.9/53	CHLORIDES 6,000	
pH / Fluid Loss	11.0/6.4		
Source of Sample	FLOWLINE		
Rm @ Meas. Temp	0.52 @ 65		
Rmf @ Meas. Temp	0.39 @ 65		
Rmc @ Meas. Temp	0.62 @ 65		
Source of Rmf / Rmc	CAL/CAL		
Rm @ BHT	0.26 @ 131F		
Time Circulation Stopped	2 HOURS		
Time Logger on Bottom	4:50 AM		
Maximum Recorded Temperature	131F		
Equipment Number	680		
Location	HAYS, KS		
Recorded By	DUGAN DENTON	JOE CRATHORNE	
Witnessed By	BRYAN BYNOG	G. KORALEGEDARA	

<<< Fold Here >>>

All interpretations are opinions based on inferences from electrical or other measurements and we cannot and do not guarantee the accuracy or correctness of any interpretation, and we shall not, except in the case of gross or willful negligence on our part, be liable or responsible for any loss, costs, damages, or expenses incurred or sustained by anyone resulting from any interpretation made by any of our officers, agents or employees. These interpretations are also subject to our general terms and conditions set out in our current Price Schedule.

Comments

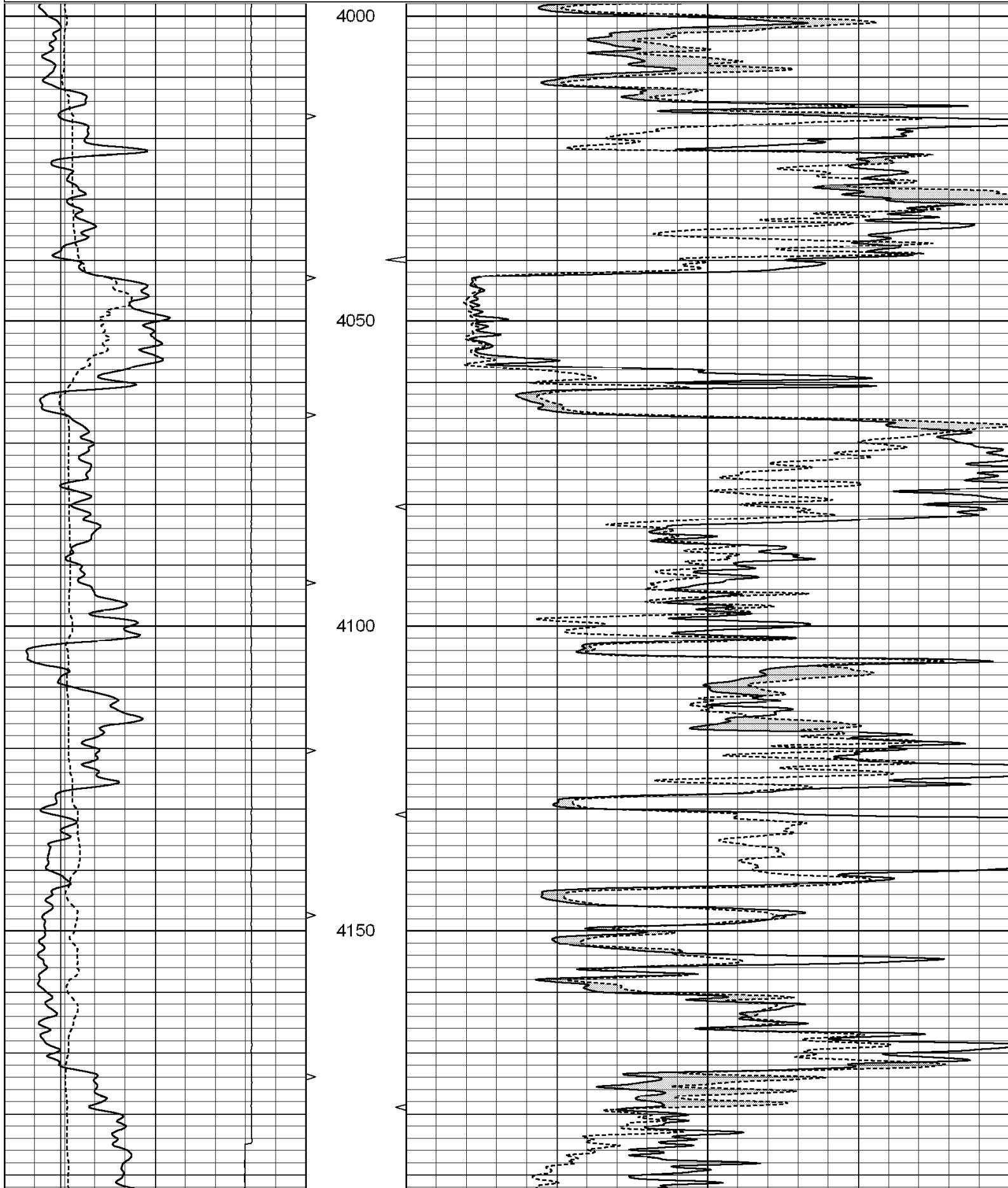
THANK YOU FOR USING SUPERIOR WELL SERVICES
HAYS, KS. 785-628-6395

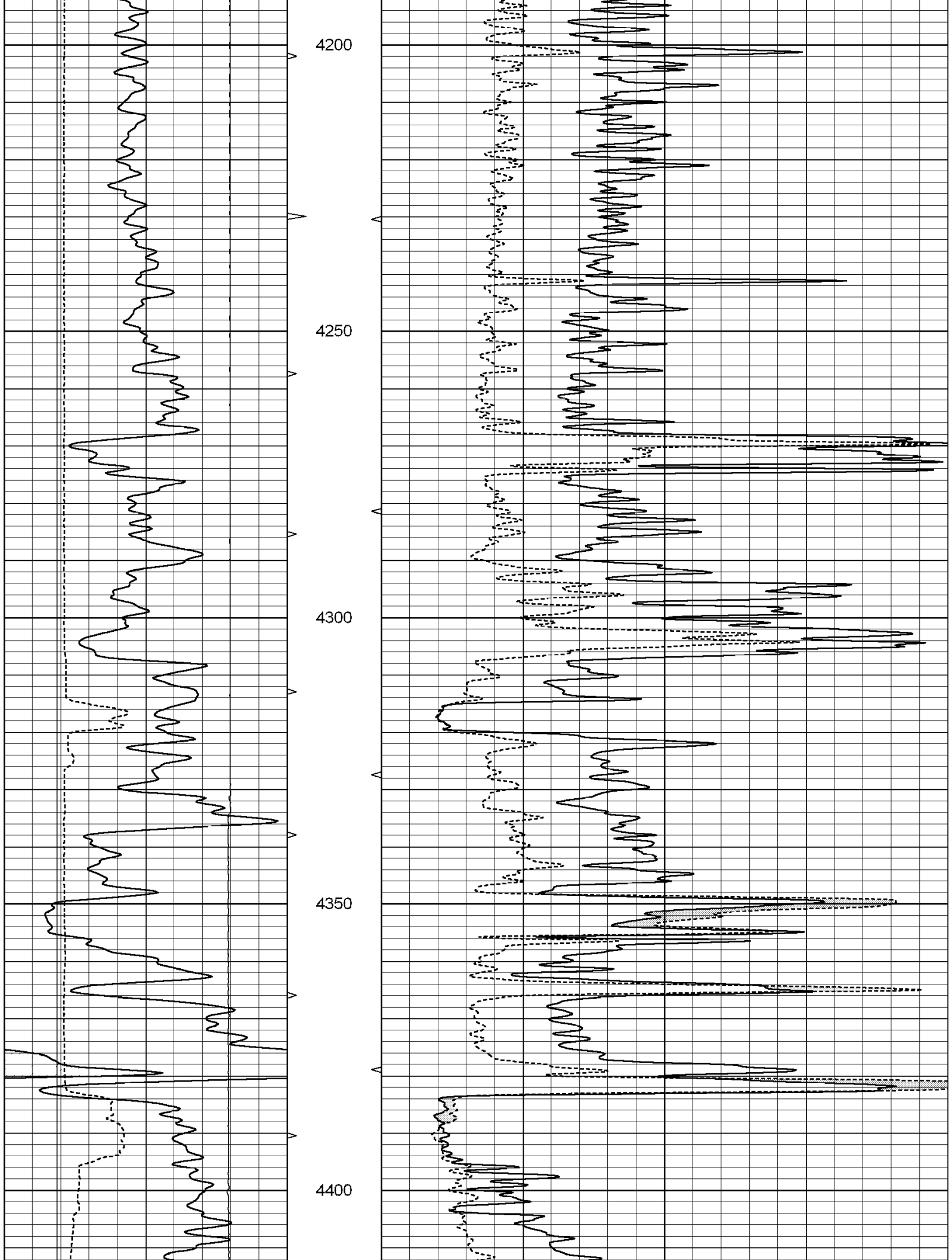
DIRECTIONS: MINNEOLA; 6 MILES SOUTH TO ROAD "I", 5 MILES EAST, SOUTH INTO

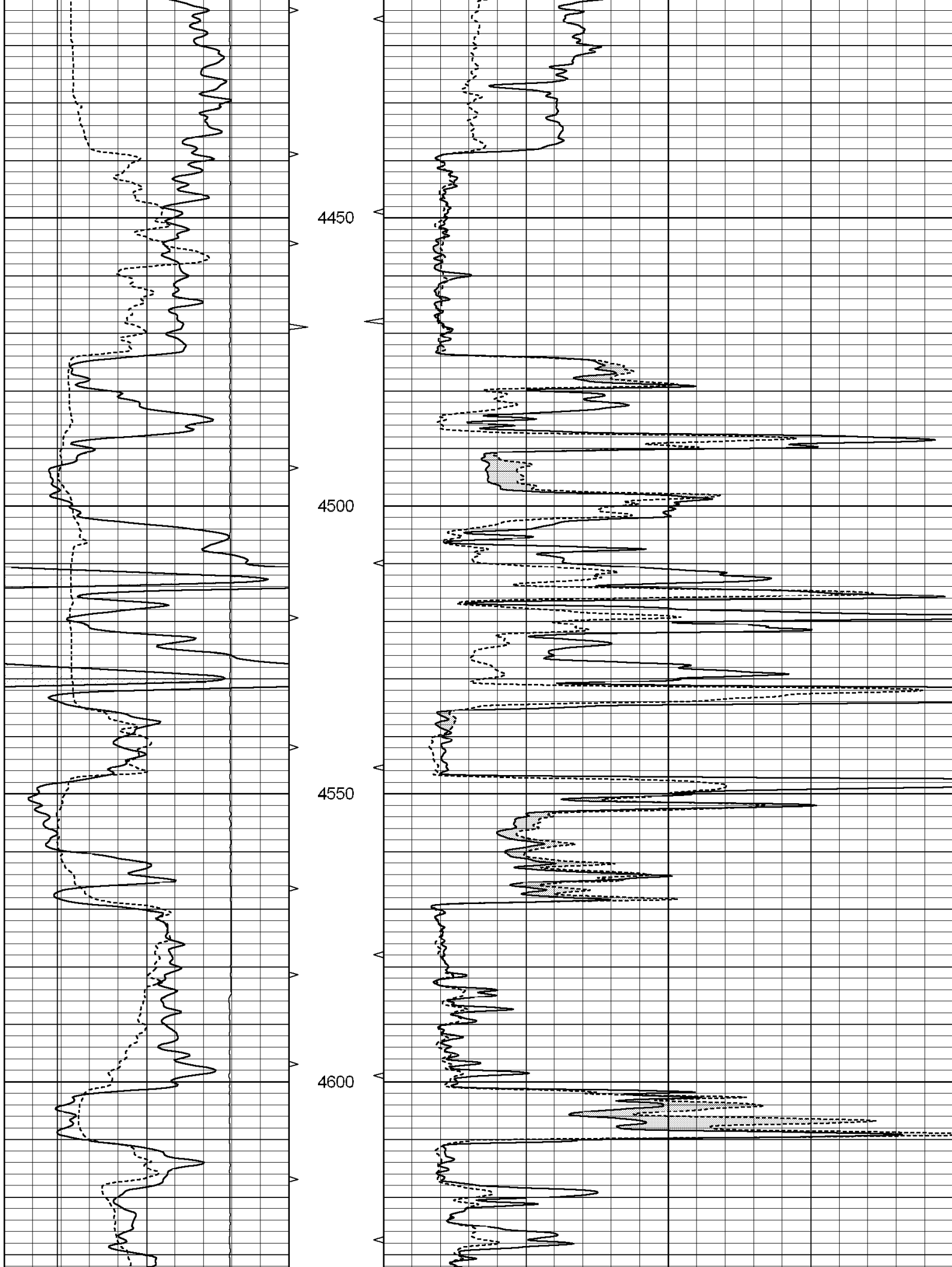
Charted by:

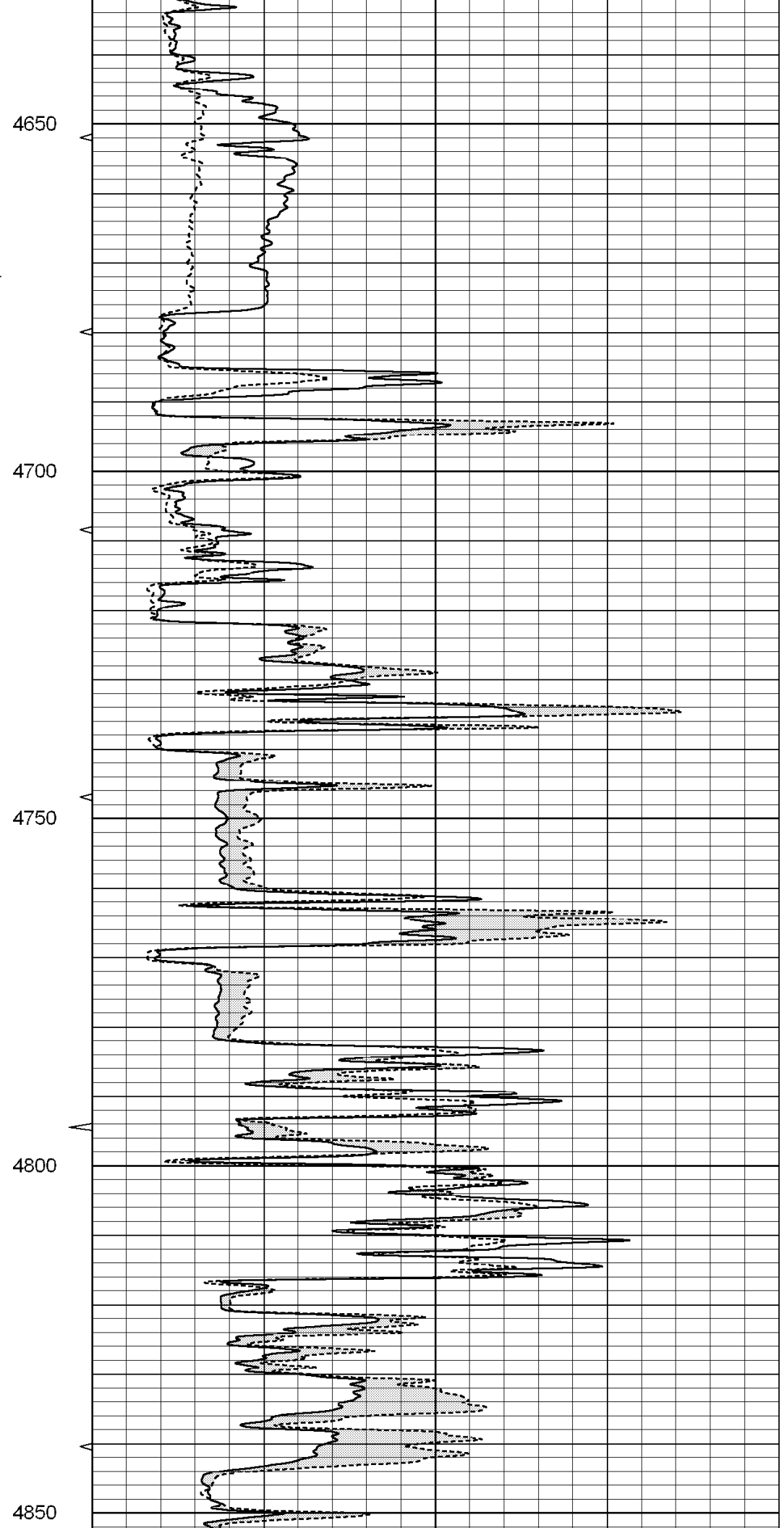
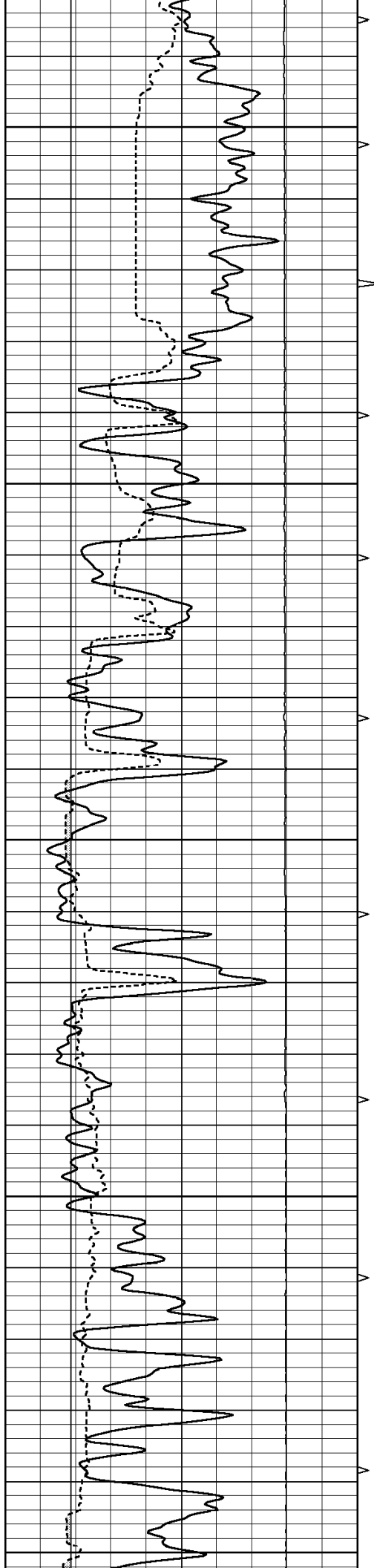
Depth in Feet scaled 1:240

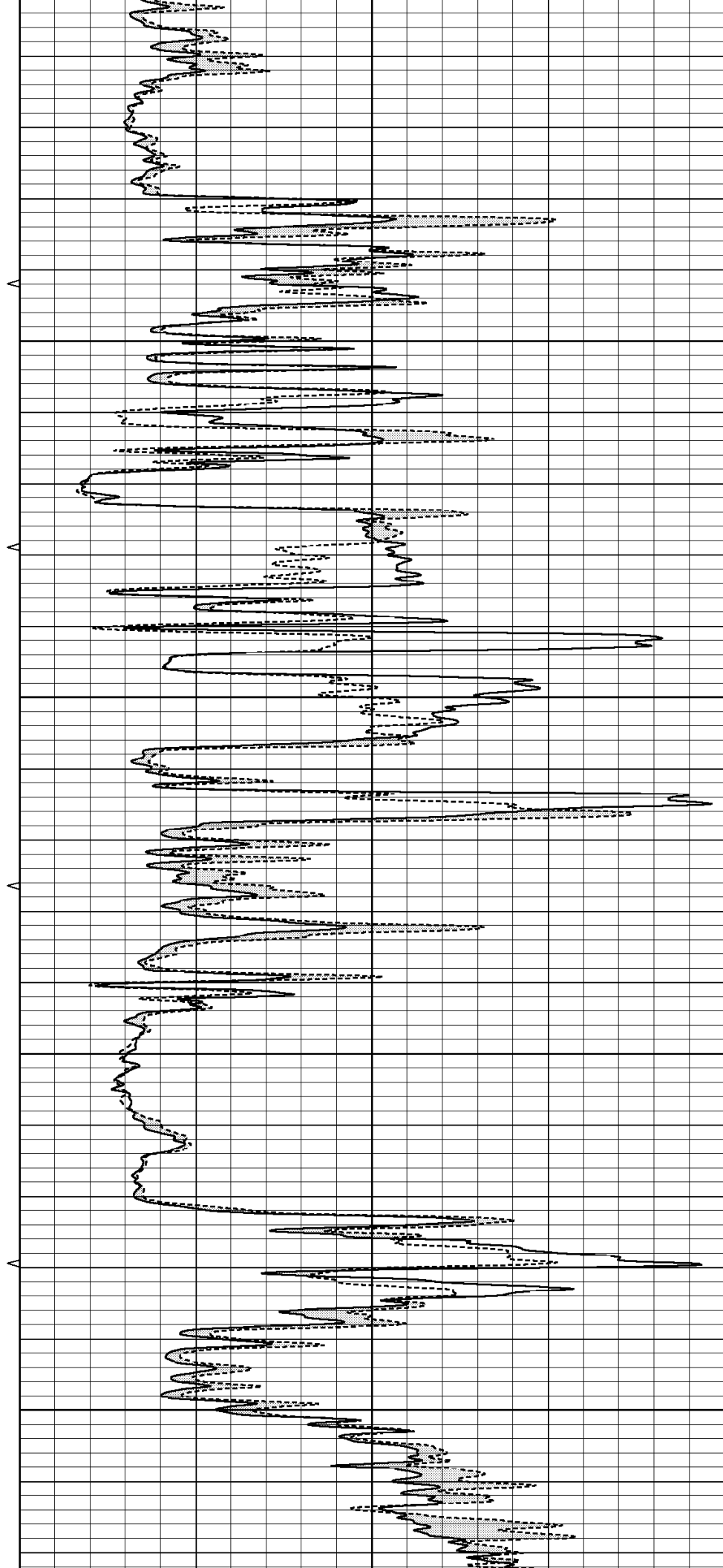
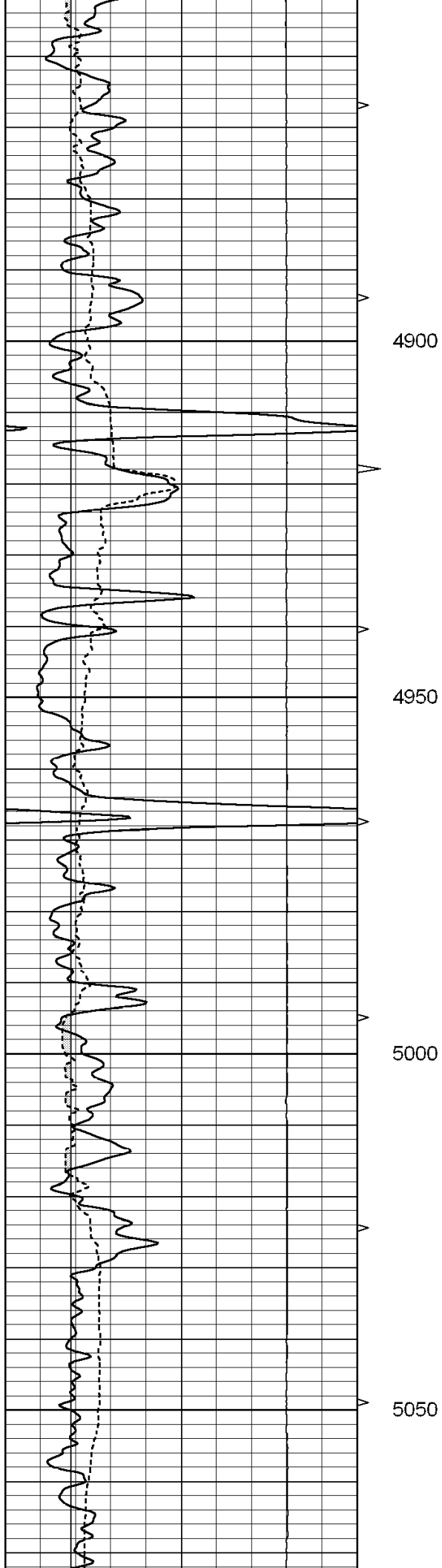
0	GAMMA RAY (GAPI)	150	ABHV	0	MEL1.5 (Ohm-m)	20
6	CALIPER (in)	16	10 (ft3)	0 0	MEL2.0 (Ohm-m)	20
10000	LTEN (lb)	0	TBHV			
			0 (ft3)	10		

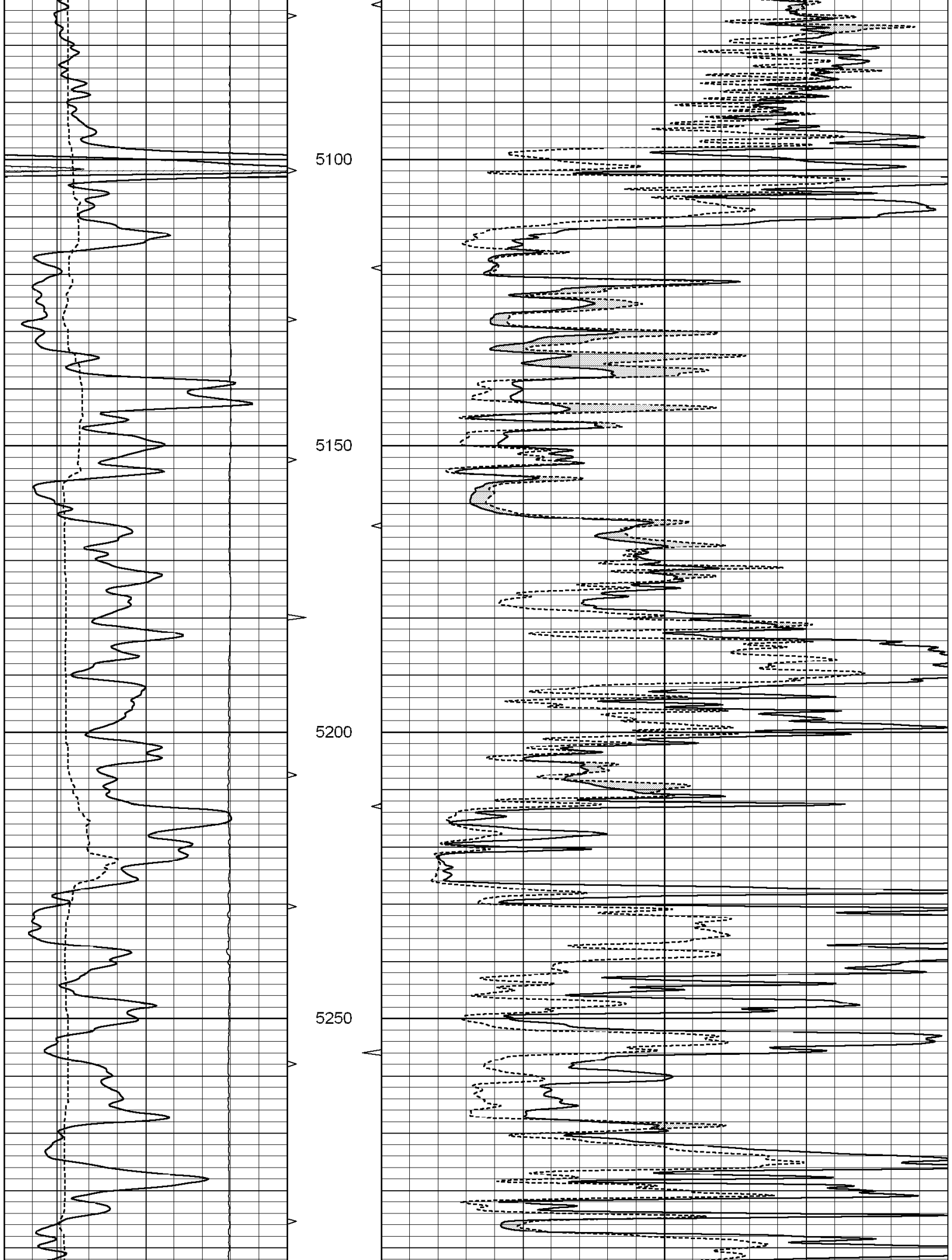


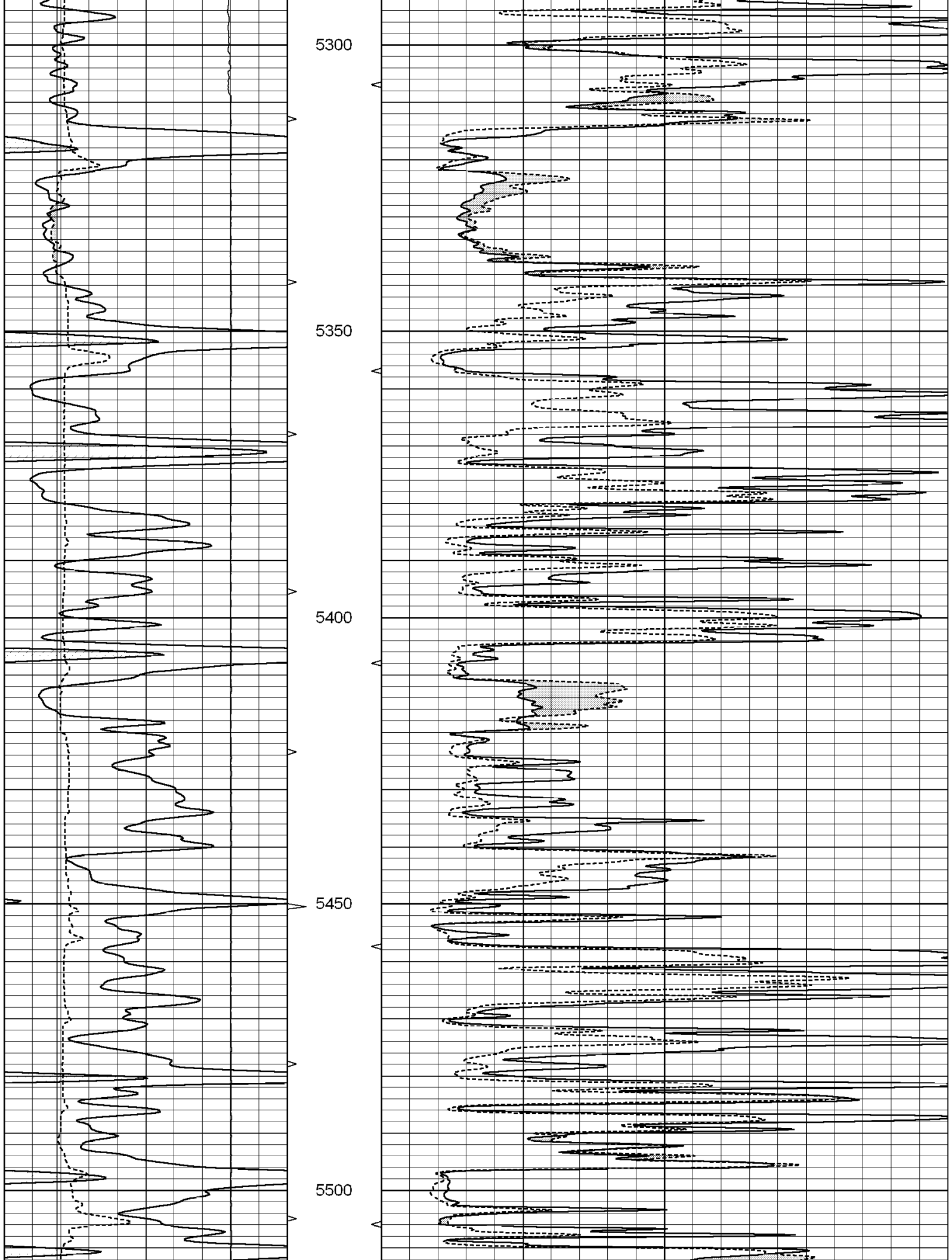


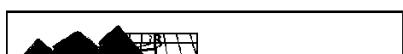
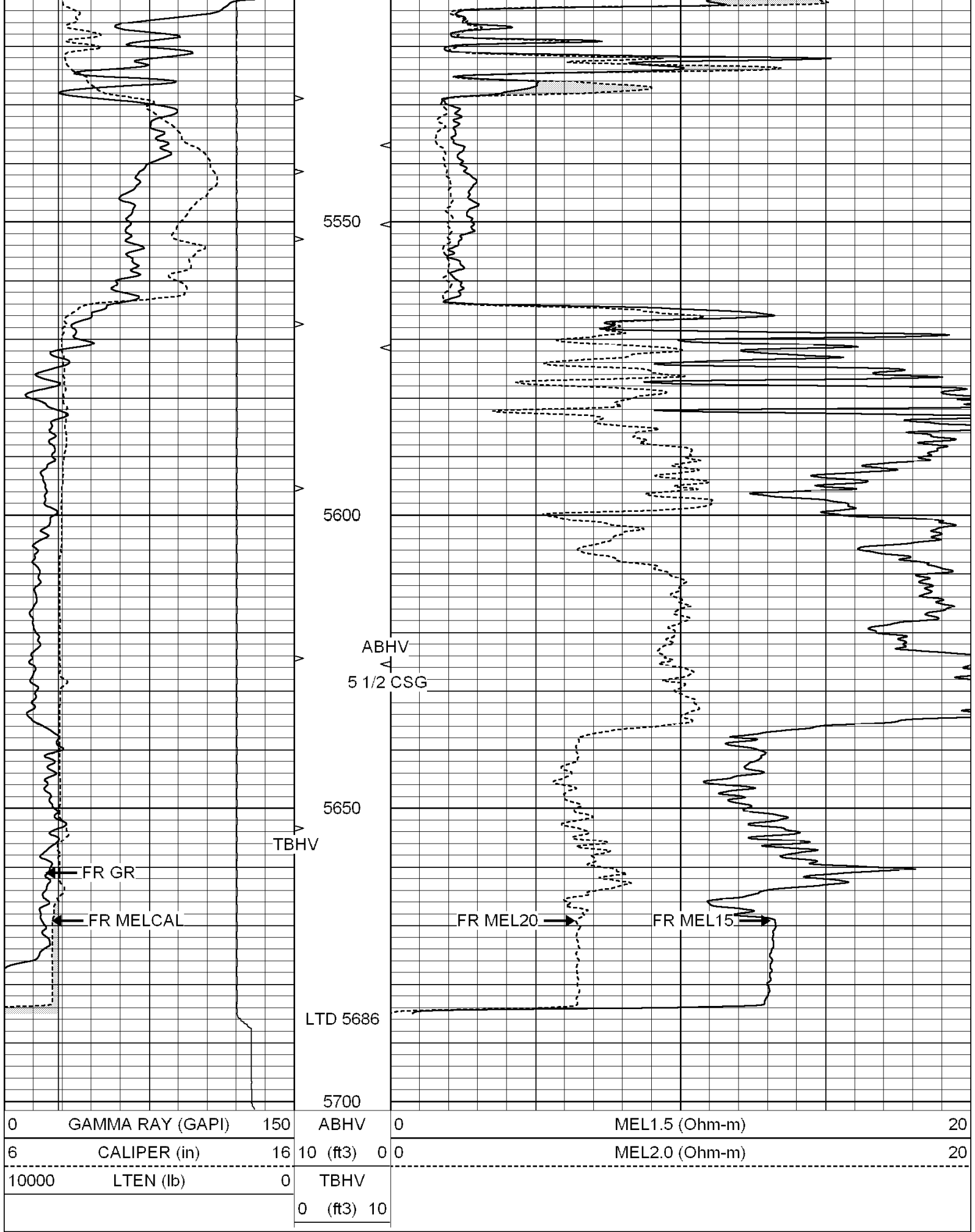












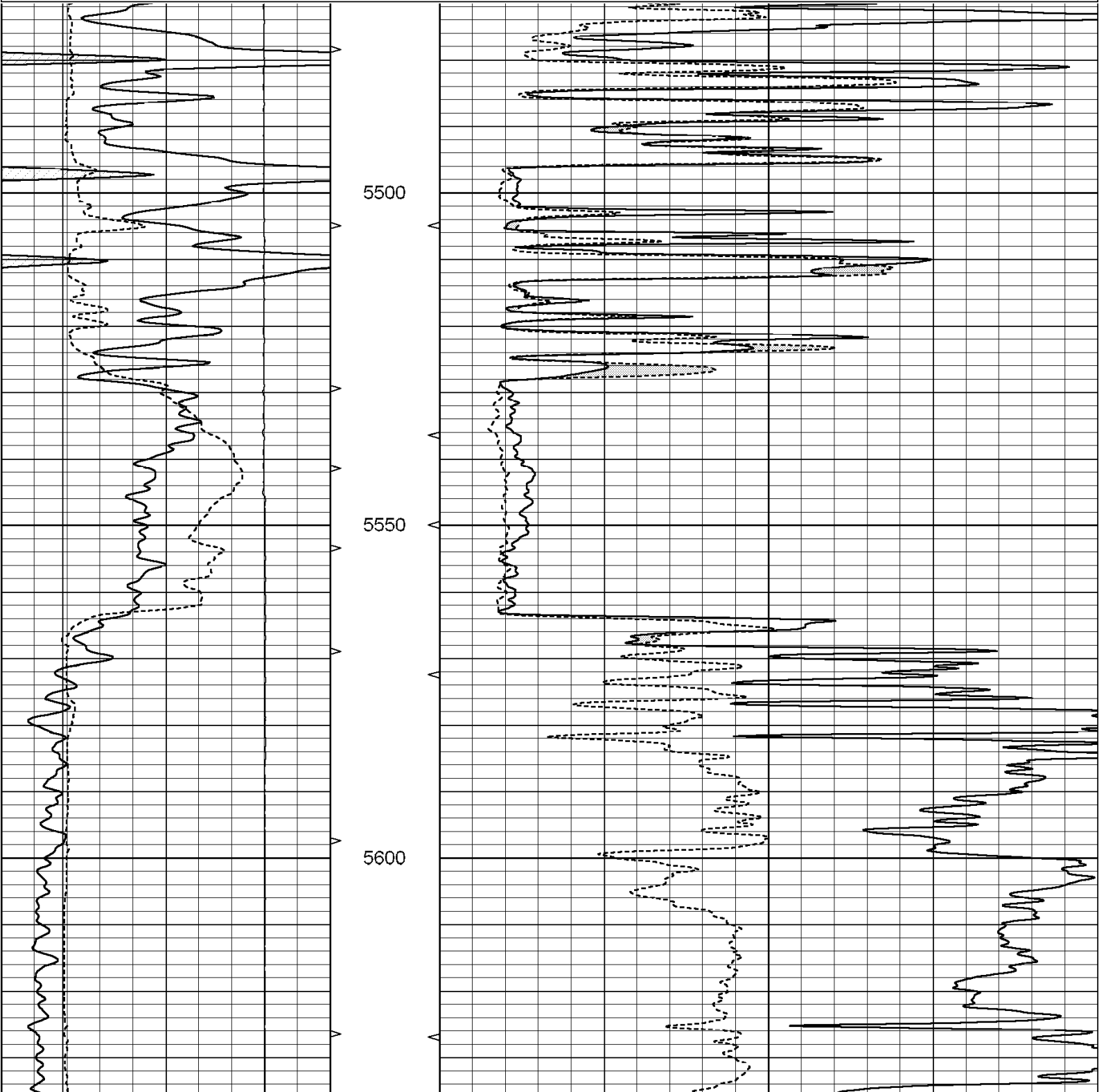


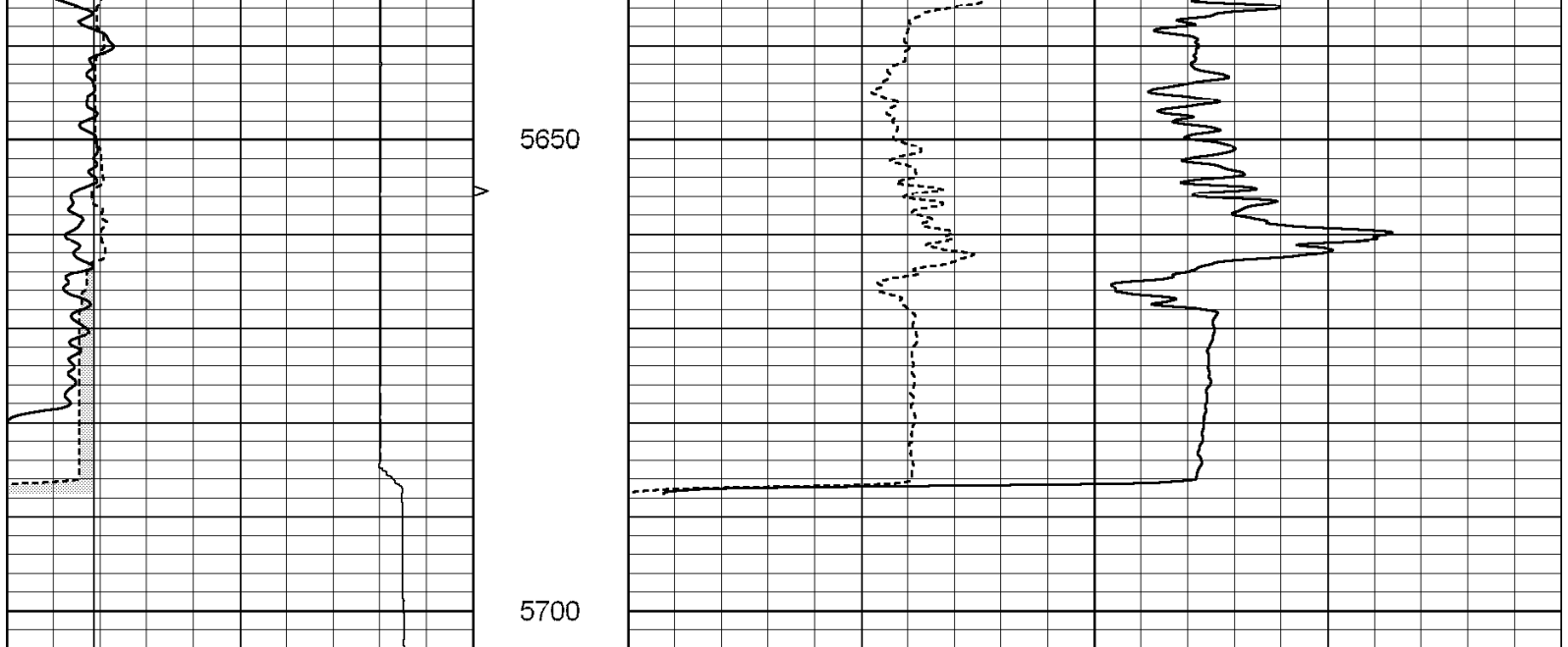
SUPERIOR
Hays,
Kansas

REPEAT SECTION

Database File: 3185berexco.db
 Dataset Pathname: pass6
 Presentation Format: _micro
 Dataset Creation: Tue Dec 30 08:00:19 2008 by Log Open-Cased 070814
 Charted by: Depth in Feet scaled 1:240

0	GAMMA RAY (GAPI)	150	ABHV	0	MEL1.5 (Ohm-m)	20
6	CALIPER (in)	16	10 (ft3)	0	MEL2.0 (Ohm-m)	20
10000	LTEN (lb)	0	TBHV			
			0 (ft3)	10		





0	GAMMA RAY (GAPI)	150	ABHV	0	MEL1.5 (Ohm-m)	20
6	CALIPER (in)	16	10 (ft3)	0	MEL2.0 (Ohm-m)	20
10000	LTEN (lb)	0	TBHV			
			0 (ft3)	10		

Calibration Report

Database File: 3185berexco.db
 Dataset Pathname: pass7
 Dataset Creation: Tue Dec 30 08:08:32 2008 by Log Open-Cased 070814

MICRO Calibration Report

Serial Number:	MICRO3	
Tool Model:	PROBE	
Performed:	Thu Dec 11 12:07:36 2008	
Caliper Calibration:	Gain=3.007	Offset=-3.615
References	Low Cal	High Cal
Readings	7.400	14.250
	3.613	5.366
1.5" Calibration:	Gain=100.503	Offset=0.755
References	Low Cal	High Cal
Readings	0.000	20.000
	-0.009	0.190
2" Calibration:	Gain=116.007	Offset=0.000
References	Low Cal	High Cal
Readings	0.000	20.000
	0.000	0.172

Gamma Ray Calibration Report

Serial Number:	GR6	
Tool Model:	OPEN	
Performed:	Thu Jan 24 17:24:37 2008	
Calibrator Value:	150.0	GAPI
Background Reading:	0.0	cps
Calibrator Reading:	250.0	cps

Calibrator Reading:

350.0

cps

Sensitivity:

0.5586

GAPI/cps