



Dual Induction Log

DIGITAL LOG (785) 625-3858

API No.	15-007-23,416-00-00	
Company	Val Energy, Inc.	
Well	Rose Trust No. 2-32	
Field	Wildcat	
County	Barber	State
Location	395' FNL & 545' FEL	
	Sec: 32	Twp: 34 S Rge: 11 W
Other Services	CNL/CDL MEL	

Permanent Datum	Ground Level	Elevation	1411
Log Measured From	Kelly Bushing	11 Ft. Above Perm. Datum	
Drilling Measured From	Kelly Bushing		
Date	1/20/2009		
Run Number	One		
Depth Driller	4900		
Depth Logger	4898		
Bottom Logged Interval	4897		
Top Log Interval	700		
Casing Driller	8.625 @ 727		
Casing Logger	700		
Bit Size	7.875		
Type Fluid in Hole	Chemical		
Salinity, ppm CL	6,000		
Density / Viscosity	9.3	75	
pH / Fluid Loss	10.0	9.6	
Source of Sample	Flowline		
Rm @ Meas. Temp	.86	@	62
Rmf @ Meas. Temp	.65	@	62
Rmc @ Meas. Temp	1.16	@	62
Source of Rmf / Rmc	Charts		
Rm @ BHT	.42	@	127
Operating Rig Time	4 1/2 Hours		
Max Rec. Temp. F	127		
Equipment Number	4		
Location	Hays		
Recorded By	K. Bange		
Witnessed By	Steve Van Buskirk		

<<< Fold Here >>>

All interpretations are opinions based on inferences from electrical or other measurements and we cannot and do not guarantee the accuracy or correctness of any interpretation, and we shall not, except in the case of gross or willful negligence on our part, be liable or responsible for any loss, costs, damages, or expenses incurred or sustained by anyone resulting from any interpretation made by any of our officers, agents or employees. These interpretations are also subject to our general terms and conditions set out in our current Price Schedule.

Comments

Thank you for using Log-Tech, Inc.
(785) 625-3858

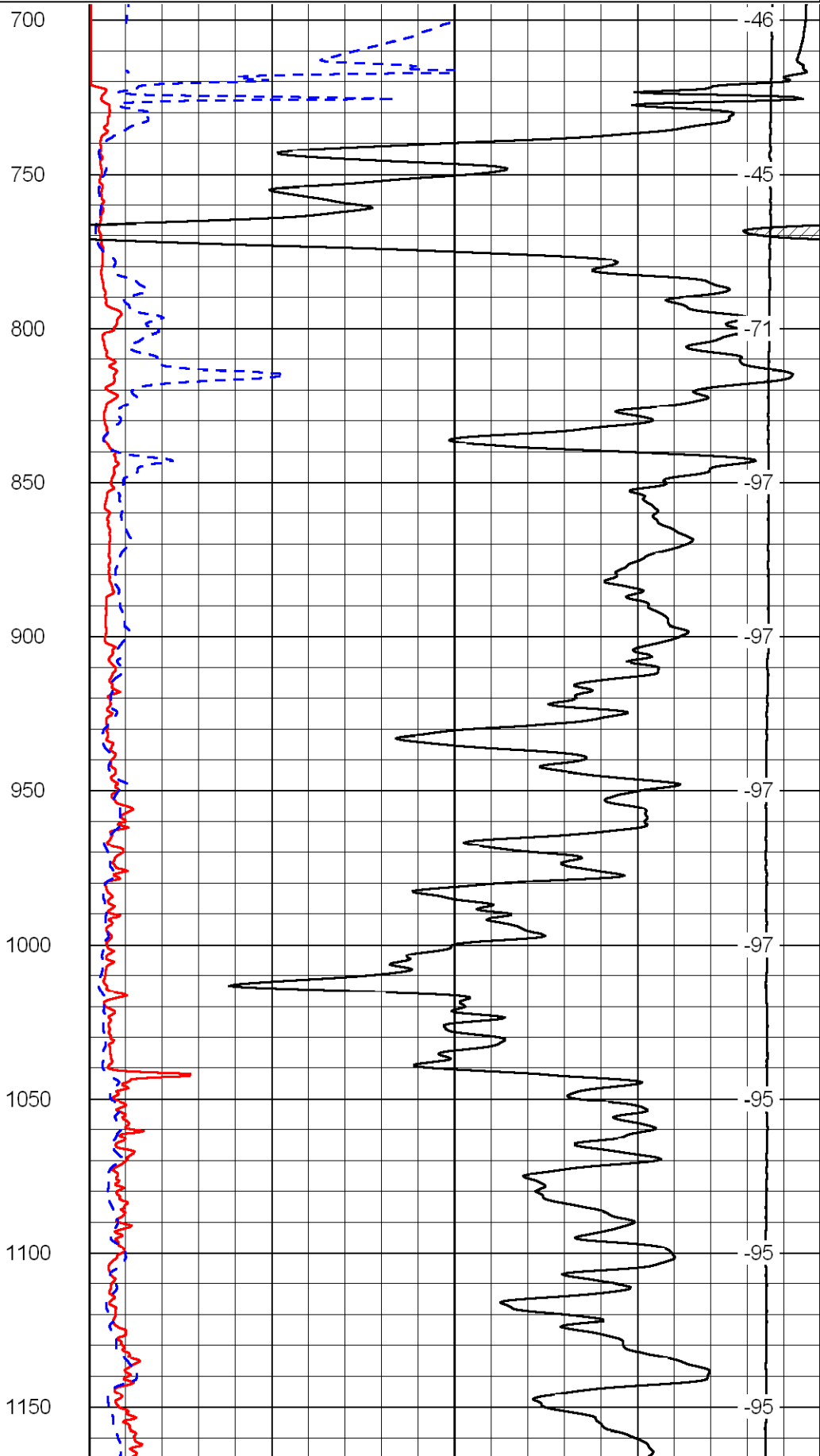
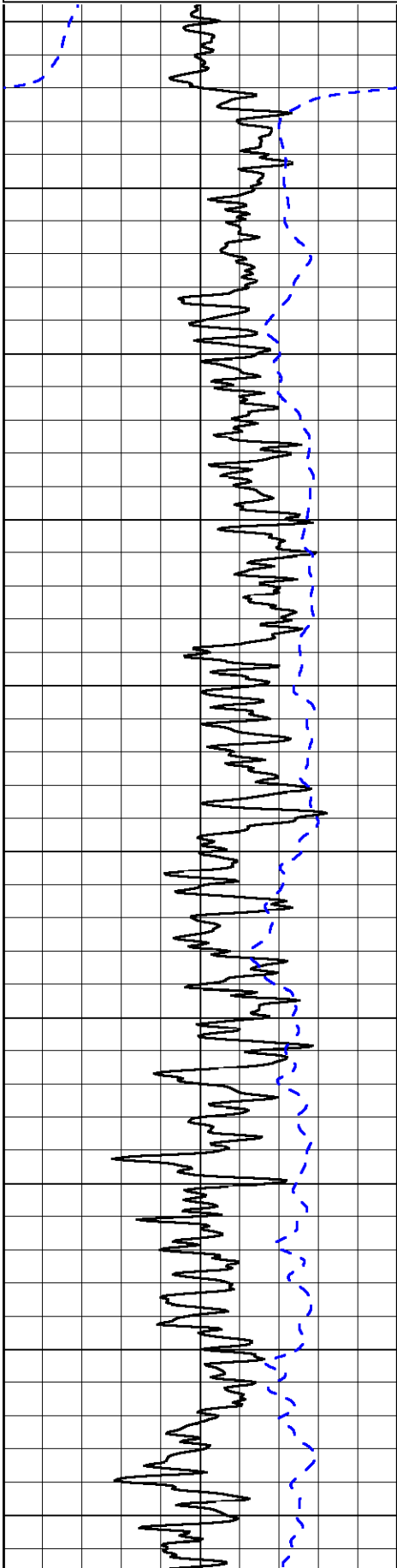
Med. Lodge S. to Hwy 2, 2 E. to Northstar rd, 1 3/4 N, W into

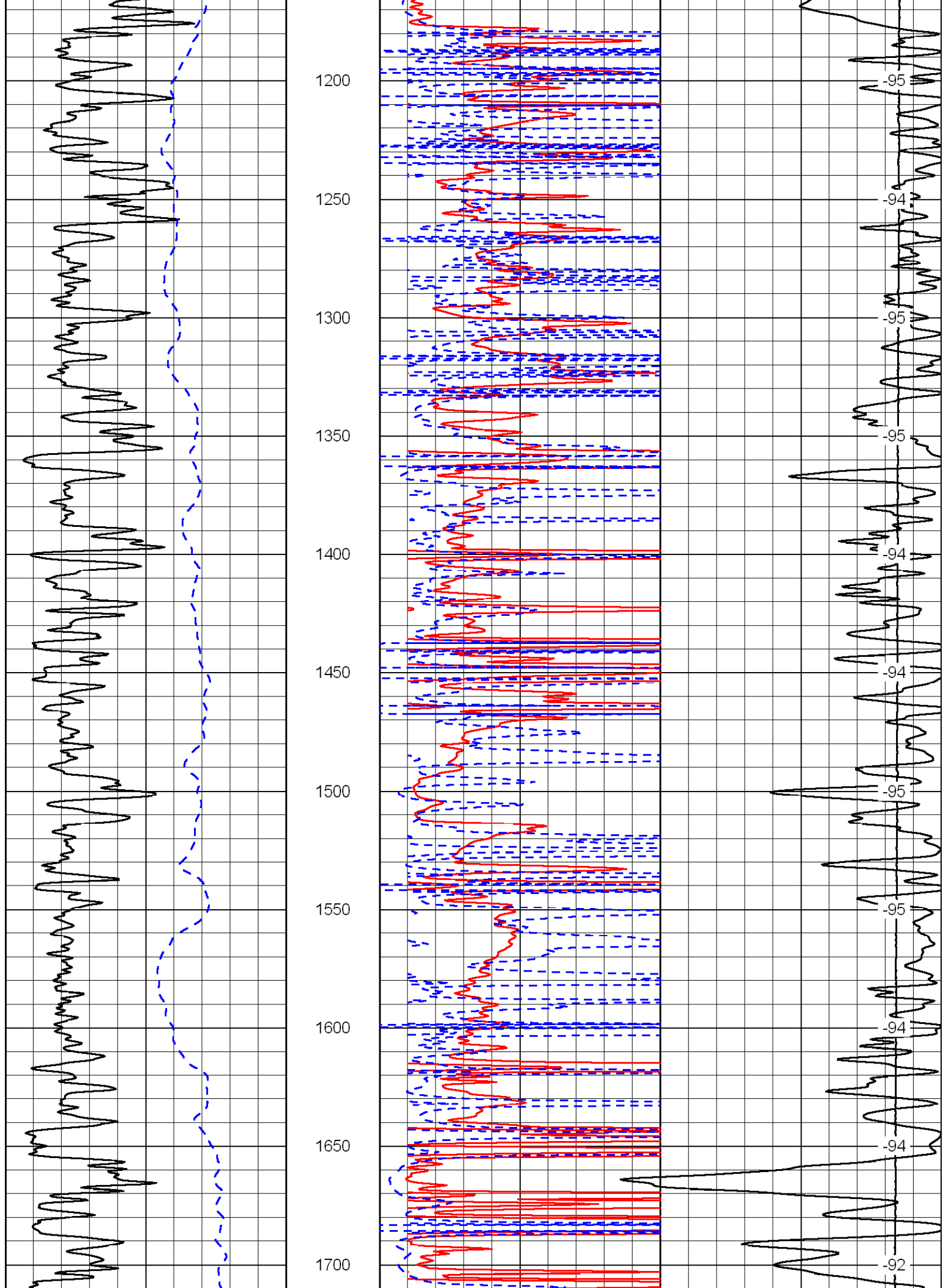
Database File: c:\warrior\data\val_rose trust no. 2-32\valhd.db
 Dataset Pathname: dil\val2in
 Presentation Format: dil2in
 Dataset Creation: Tue Jan 20 16:40:07 2009
 Charted by: Depth in Feet scaled 1:600

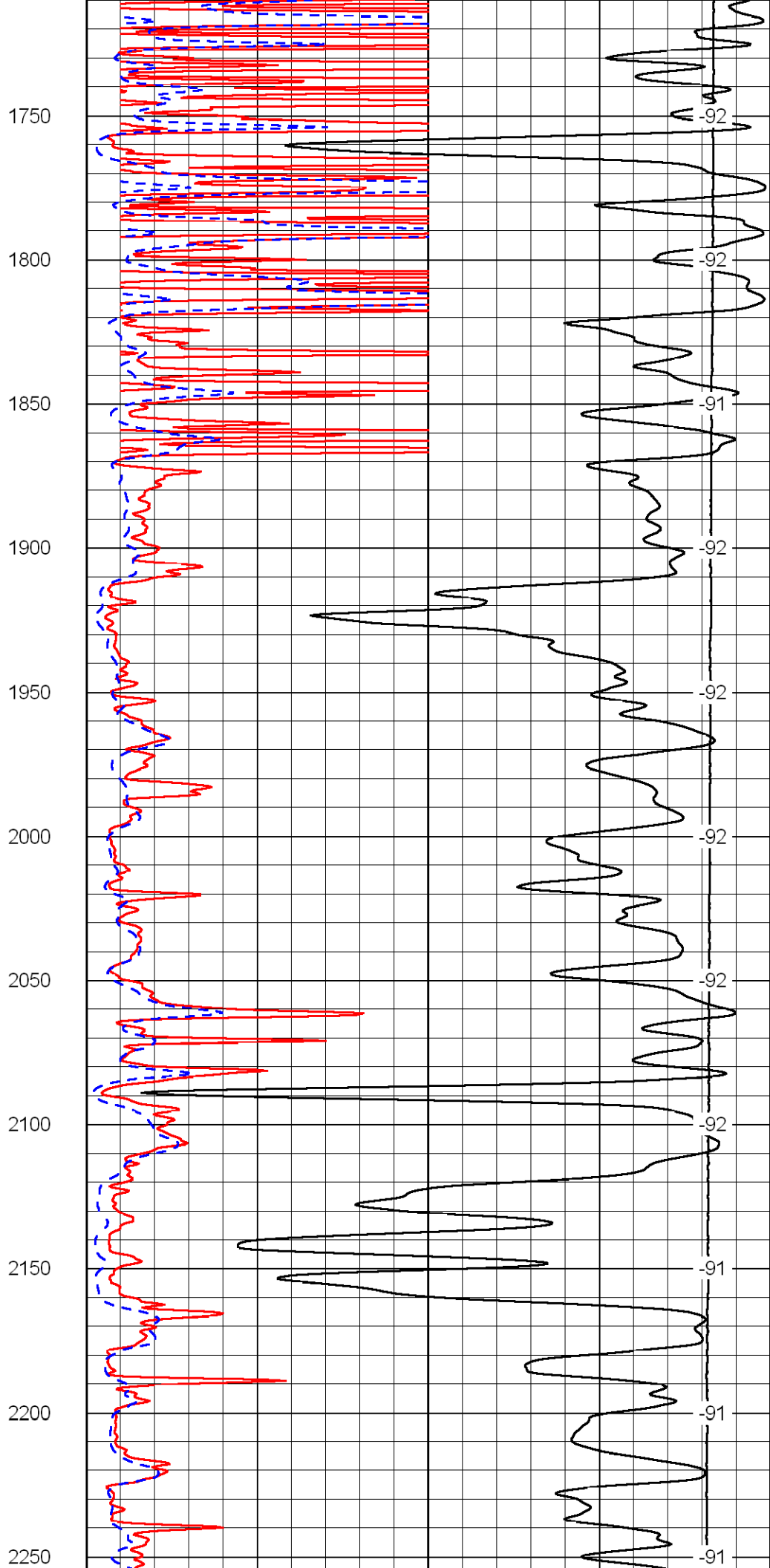
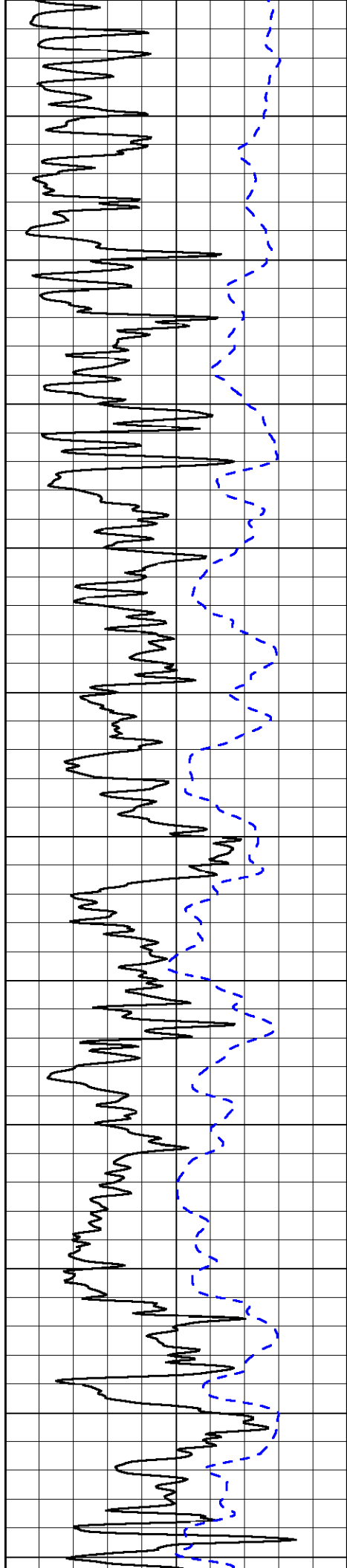
0 Gamma Ray 150
-200 SP 0

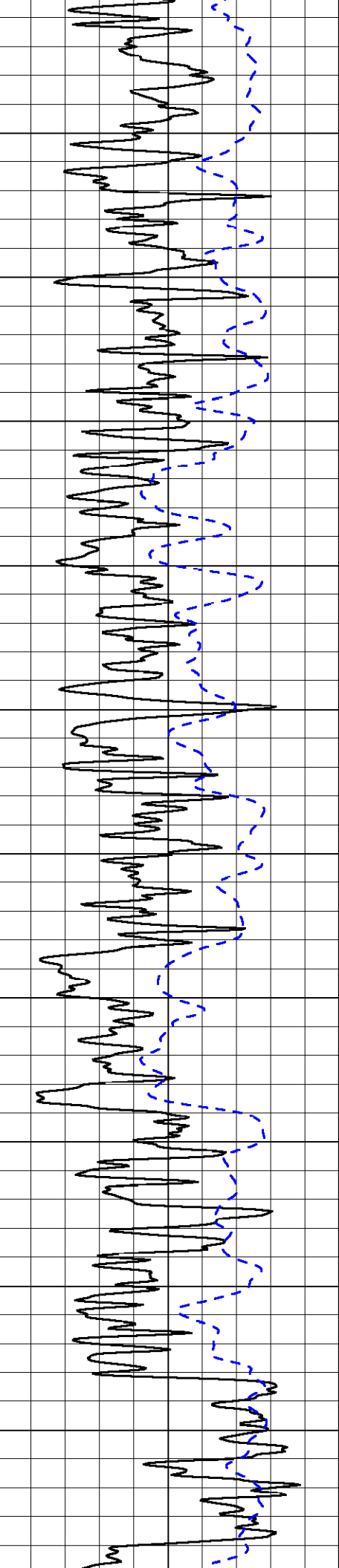
0 Shallow Resistivity 50
0 Deep Resistivity 50
1000 Conductivity 0
15000 Line Tension 0
50 Shallow Resistivity 500
50 Deep Resistivity 500

LSPD

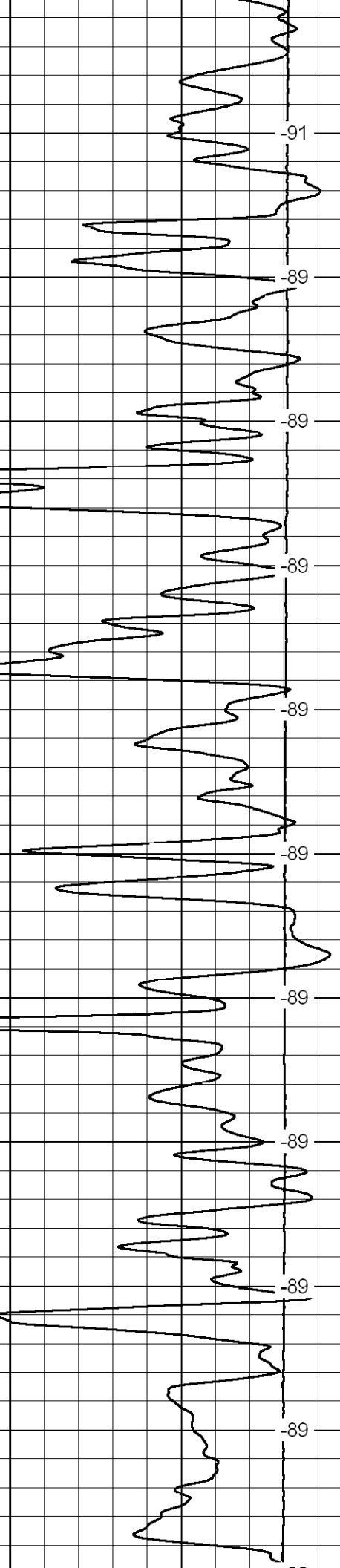
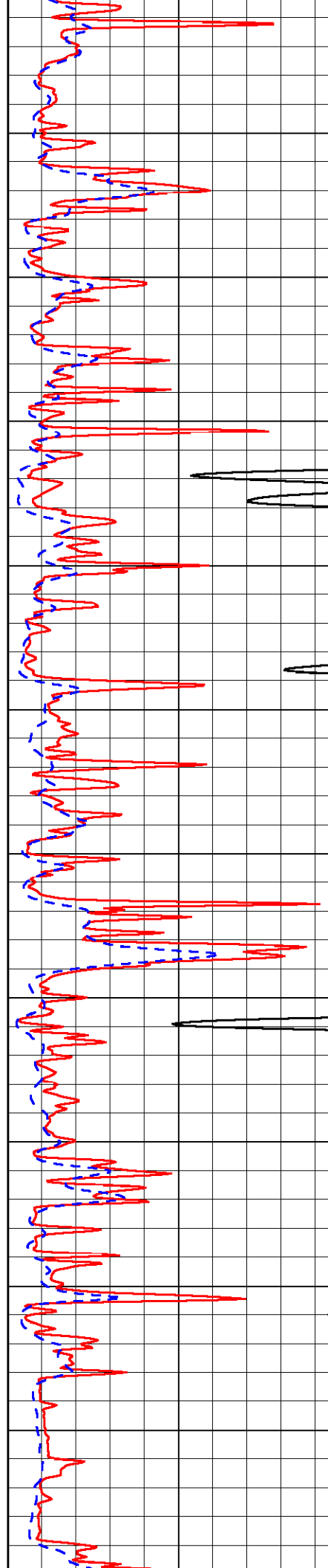




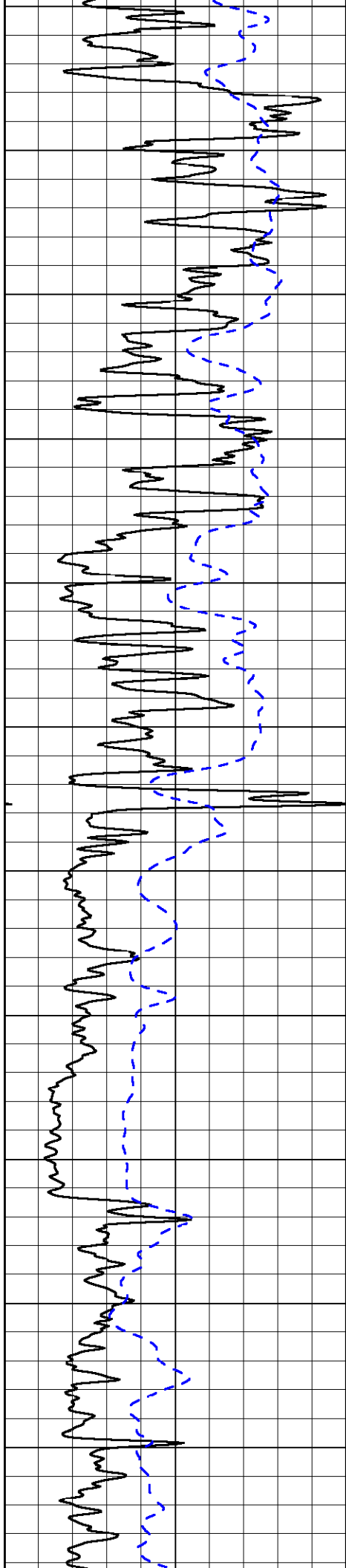




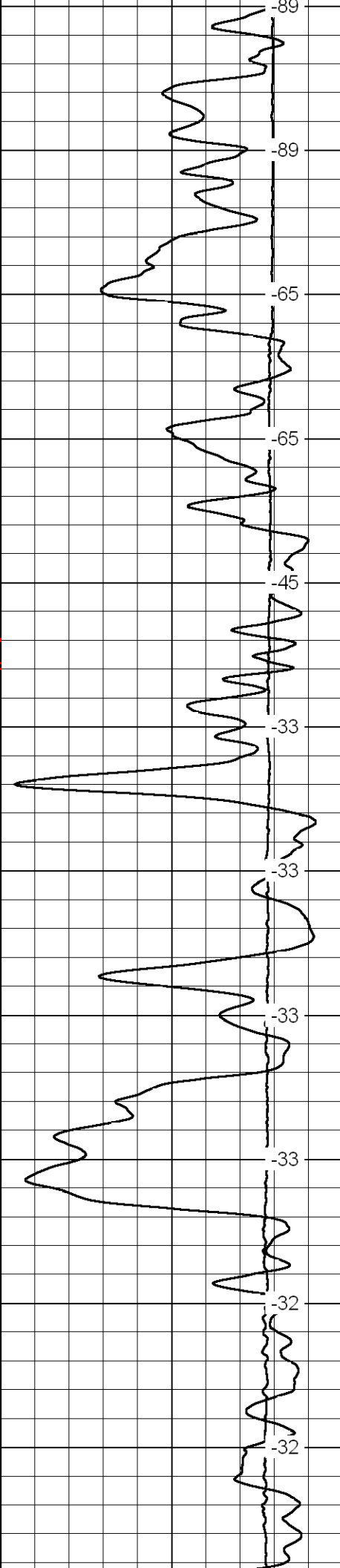
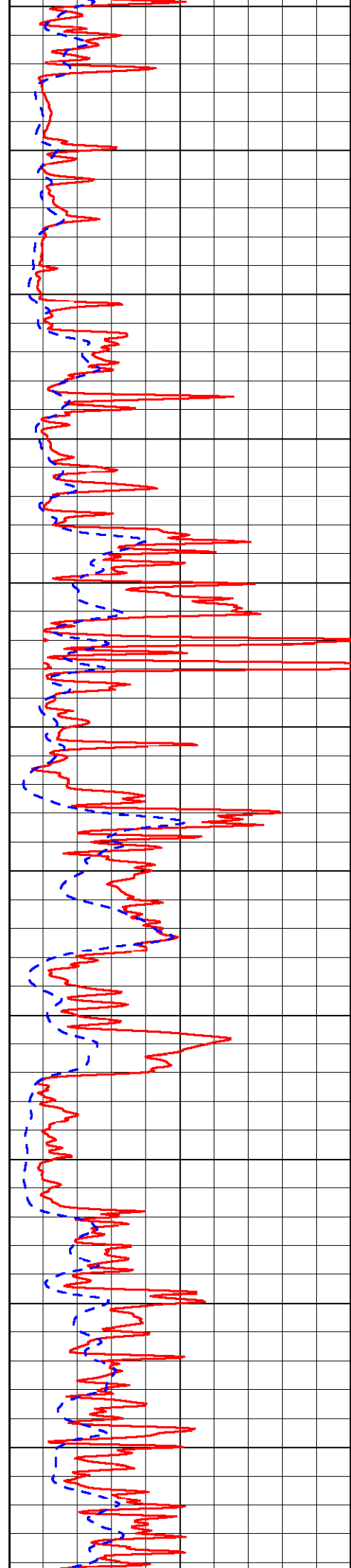
2300
2350
2400
2450
2500
2550
2600
2650
2700
2750
2800



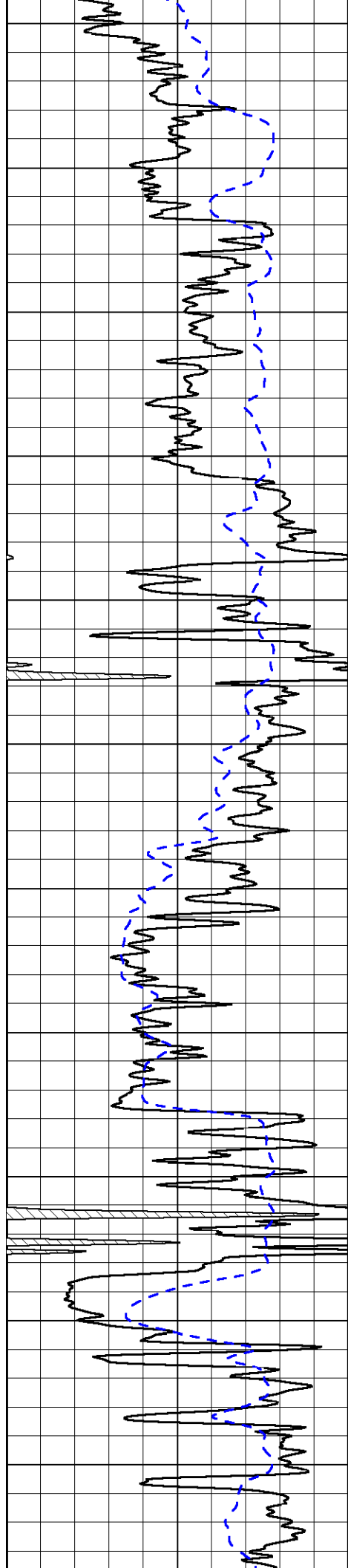
-91
-89
-89
-89
-89
-89
-89
-89
-89
-89
-89



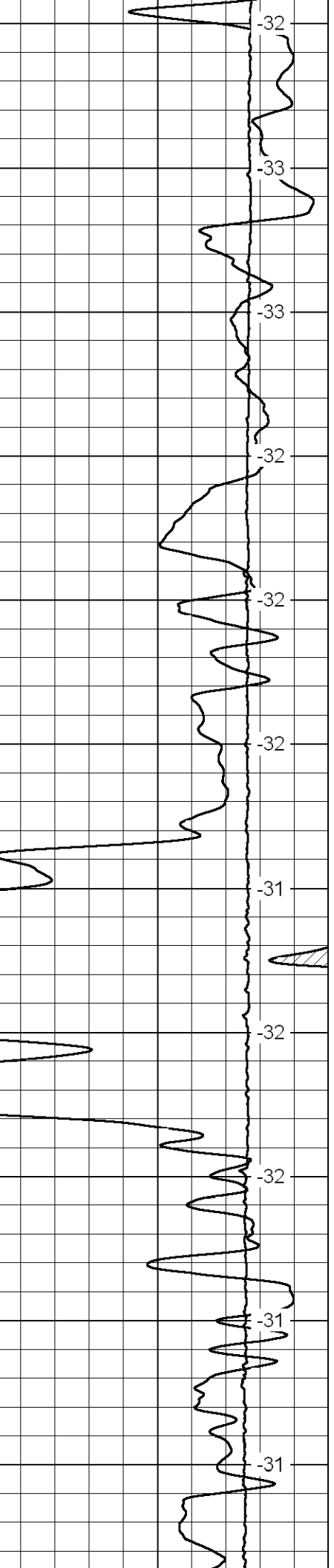
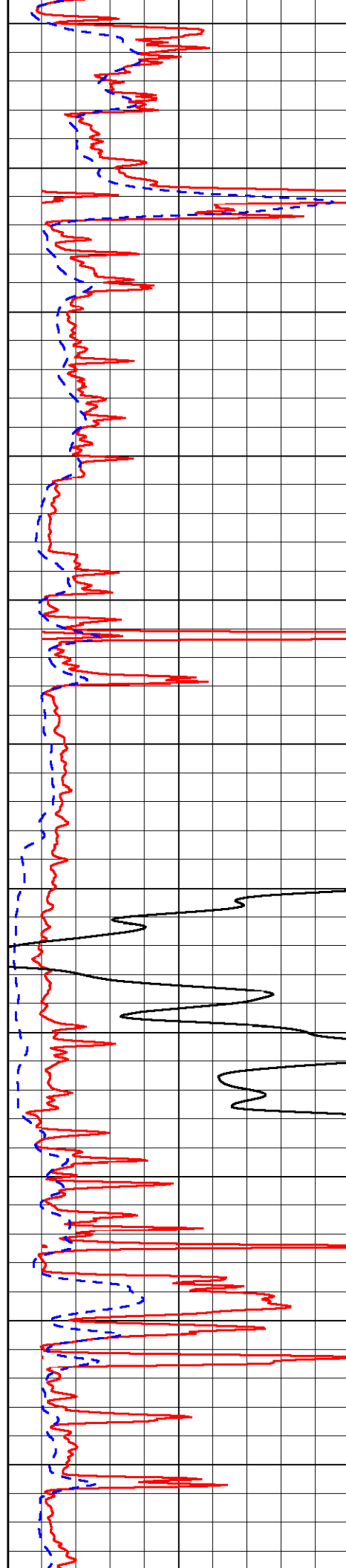
2800
2850
2900
2950
3000
3050
3100
3150
3200
3250
3300



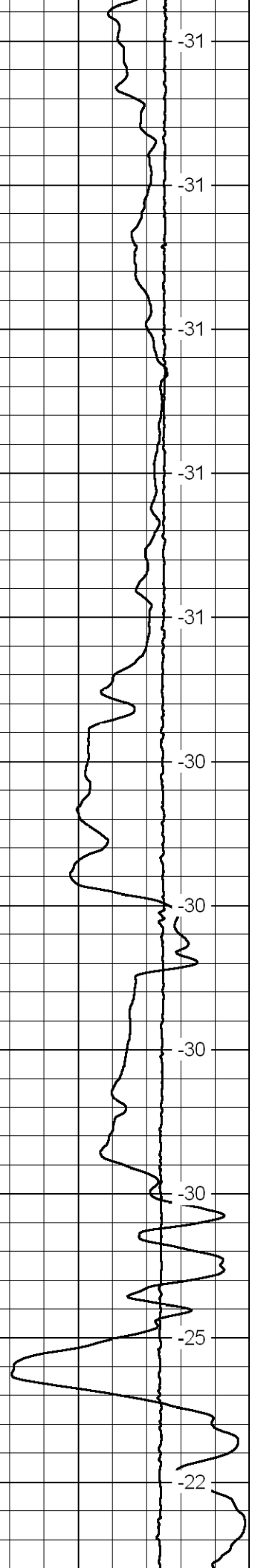
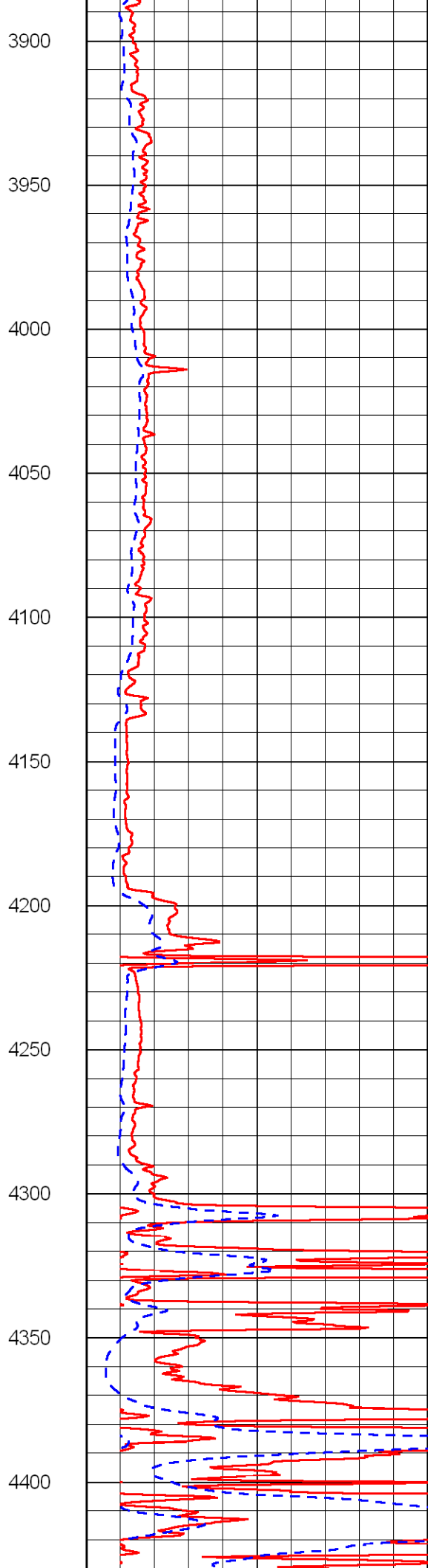
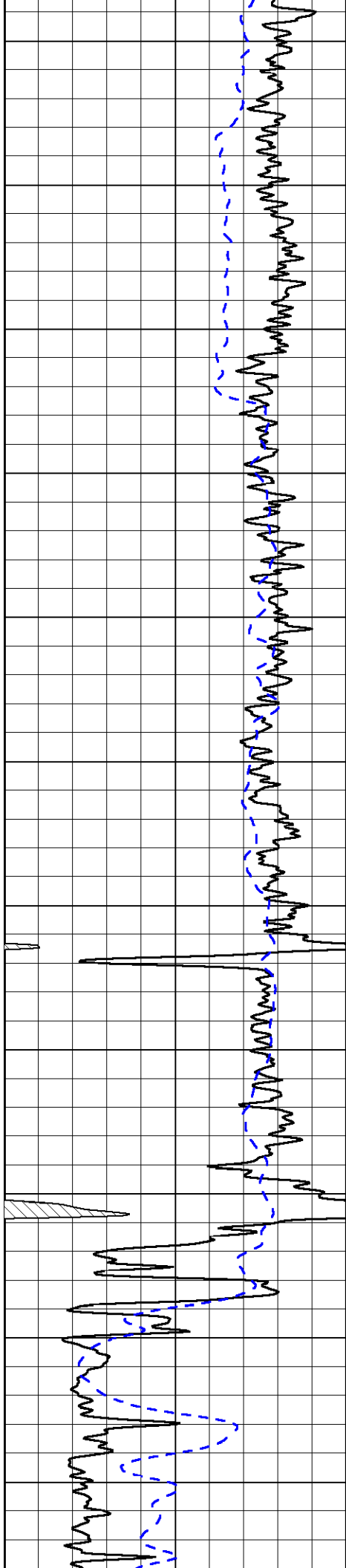
-89
-89
-65
-65
-45
-33
-33
-33
-33
-33
-32
-32

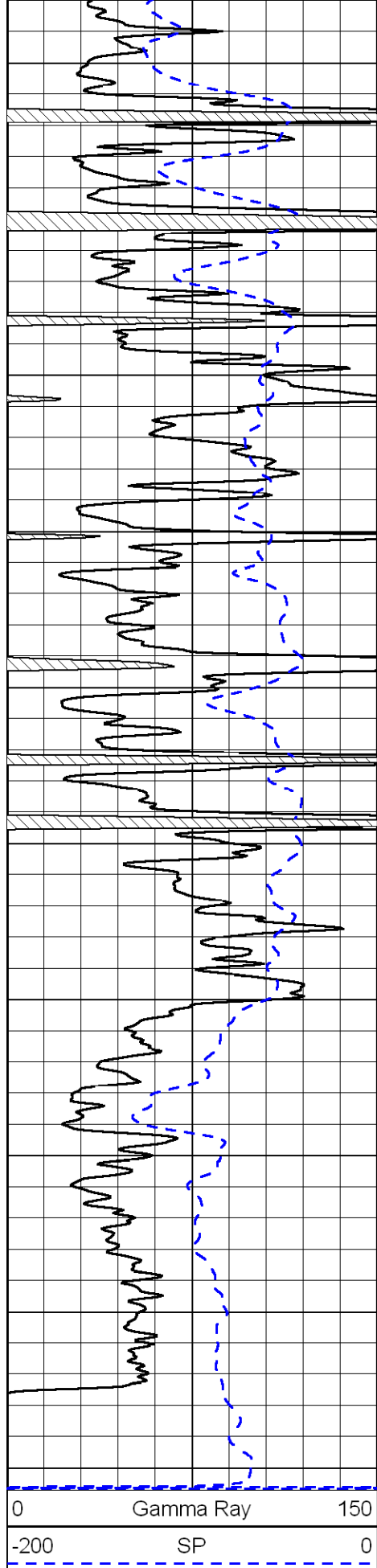


3350
3400
3450
3500
3550
3600
3650
3700
3750
3800
3850

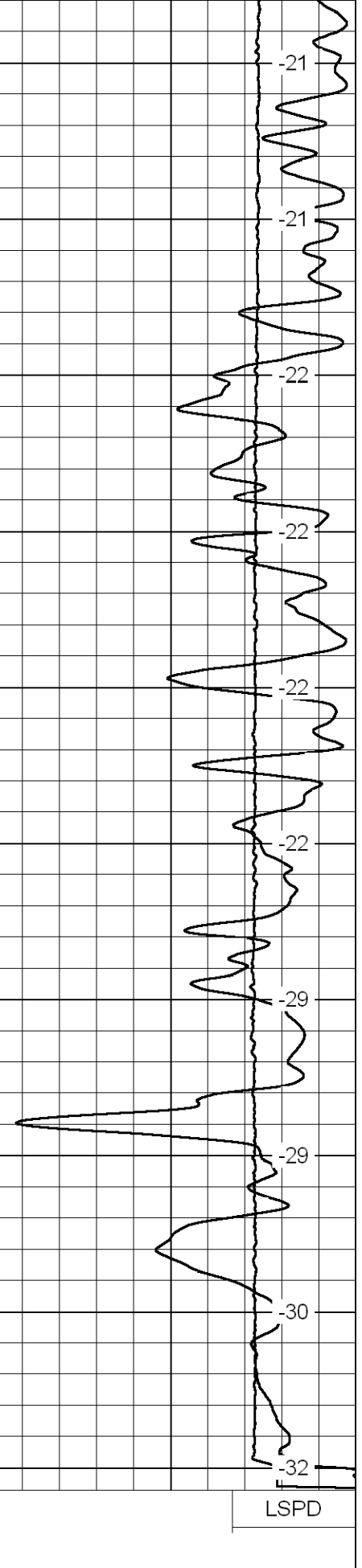
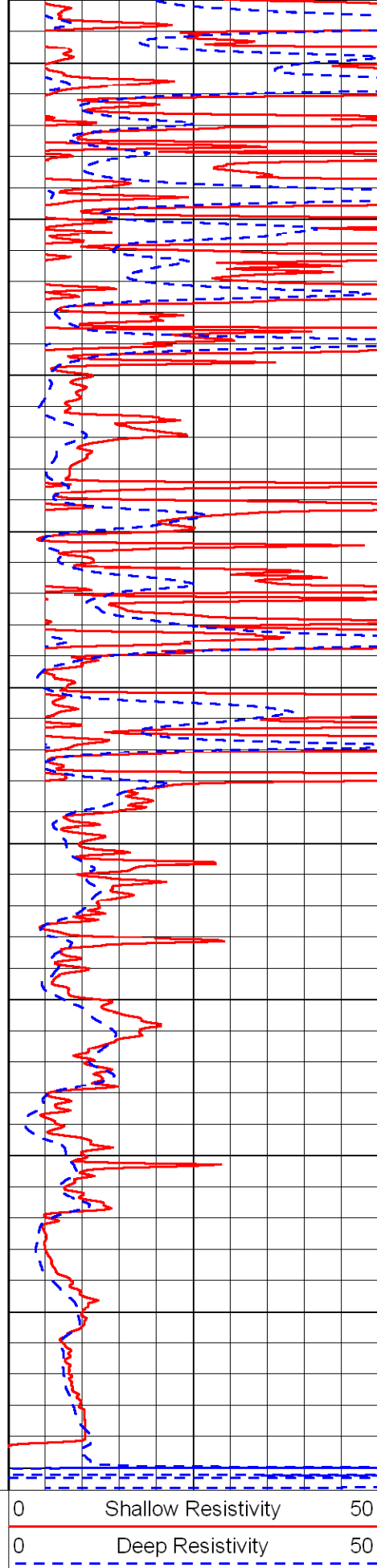


-32
-33
-33
-32
-32
-32
-31
-32
-32
-31
-31





4450
4500
4550
4600
4650
4700
4750
4800
4850
4900



0 150

-200 0

0 50

0 50

1000 Conductivity 0

15000 Line Tension 0

50 Shallow Resistivity 500

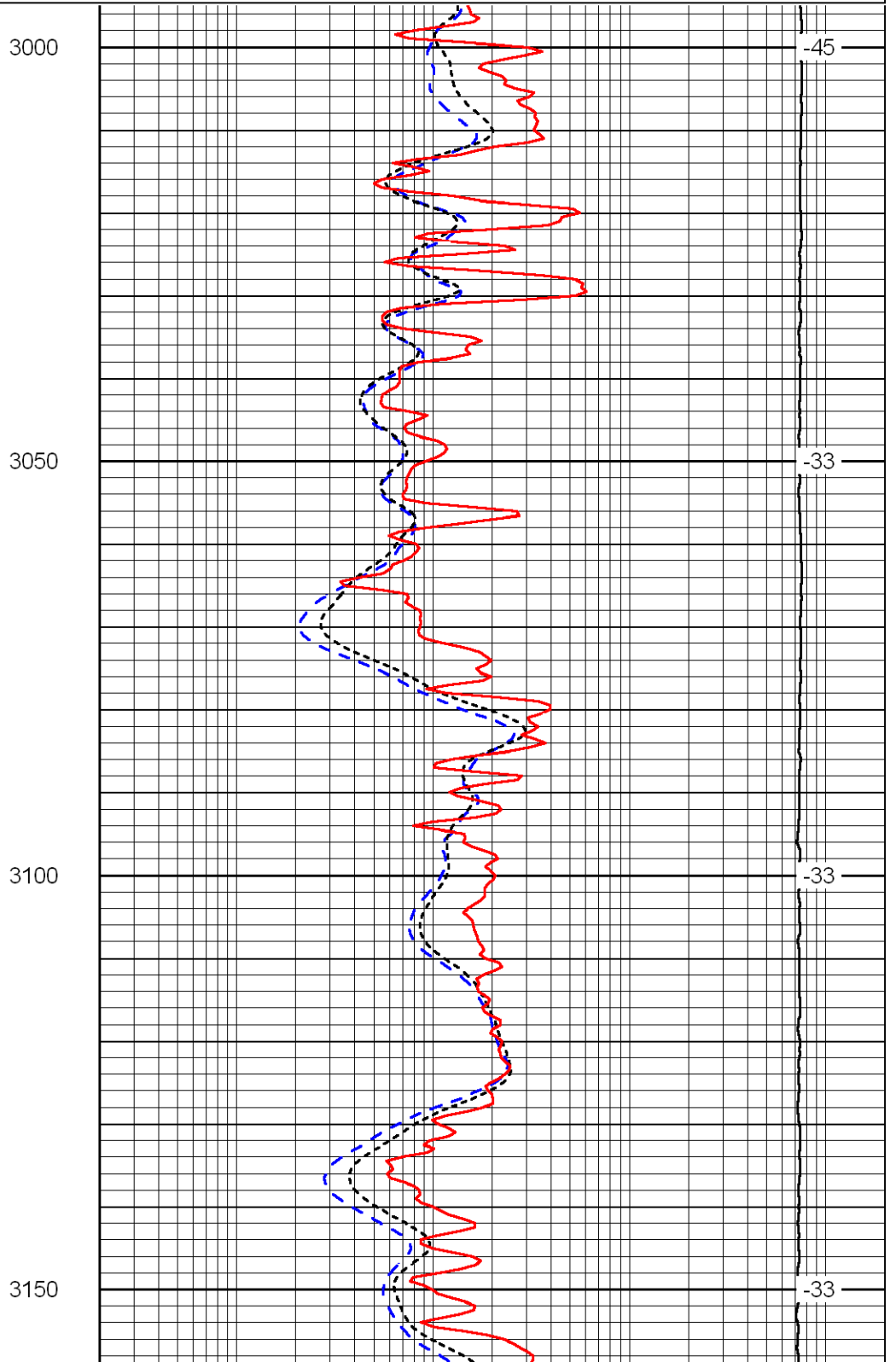
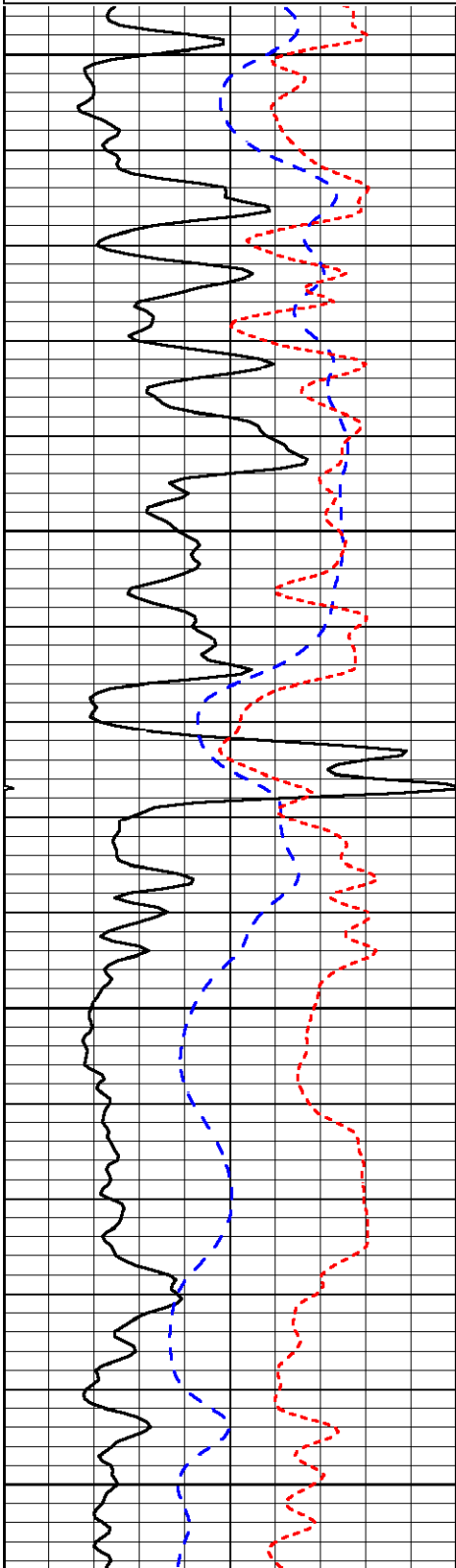
50 Deep Resistivity 500

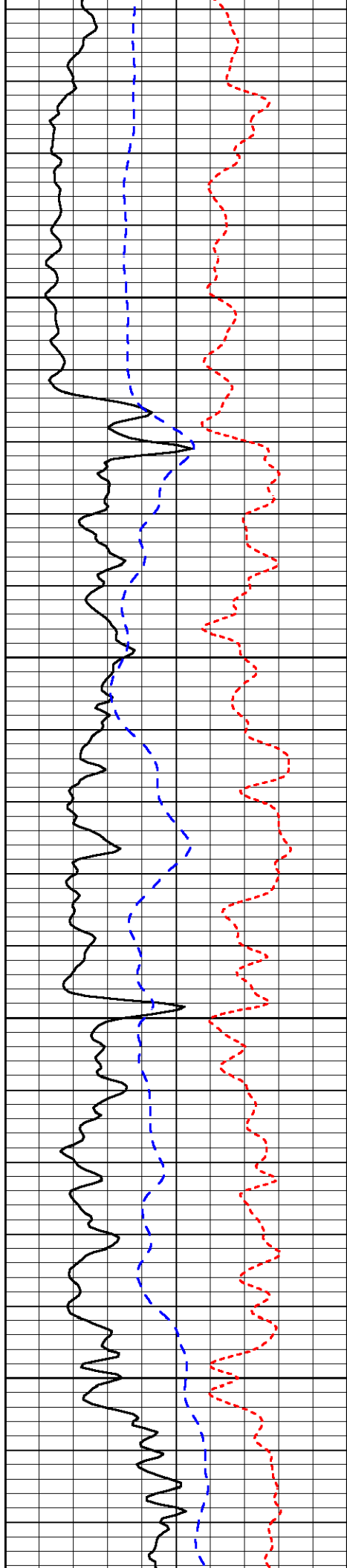
Database File: c:\warrior\data\val_rose trust no. 2-32\valhd.db
 Dataset Pathname: dil\val2in
 Presentation Format: dil
 Dataset Creation: Tue Jan 20 16:40:07 2009
 Charted by: Depth in Feet scaled 1:240

0	Gamma Ray	150
-200	SP	0
-160	Rxo / Rt	40

0.2	Deep Resistivity	2000
0.2	Medium Resistivity	2000
0.2	Shallow Resistivity	2000
15000	Line Tension	0

LSPD



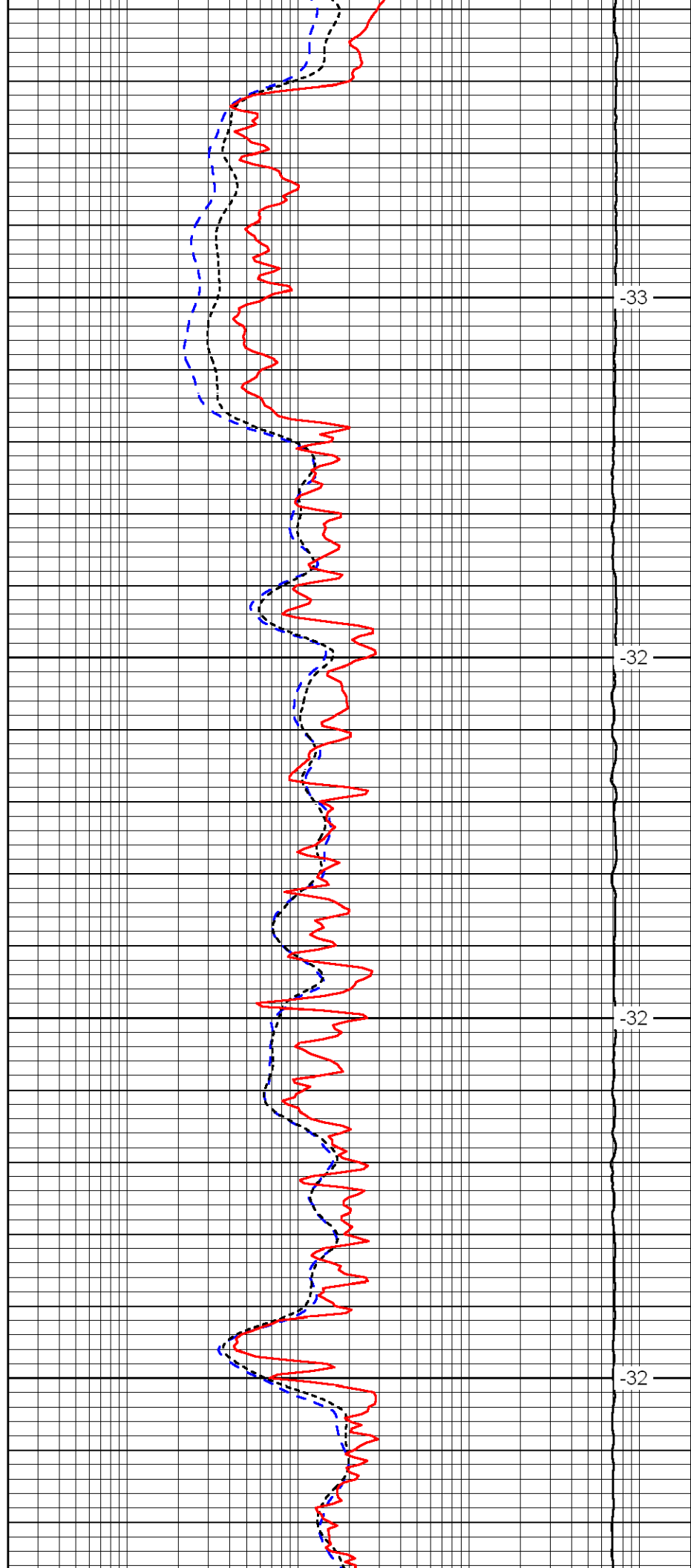


3200

3250

3300

3350

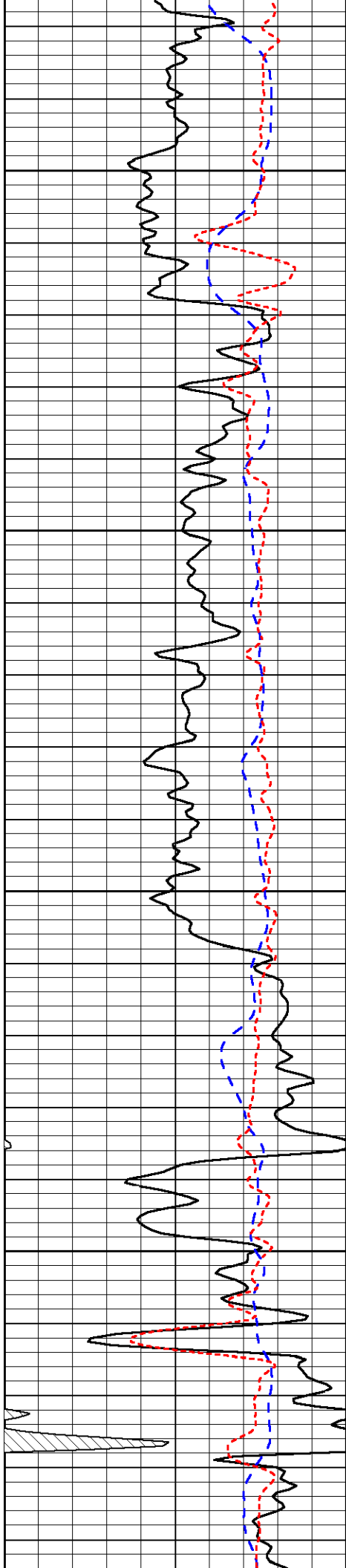


-33

-32

-32

-32

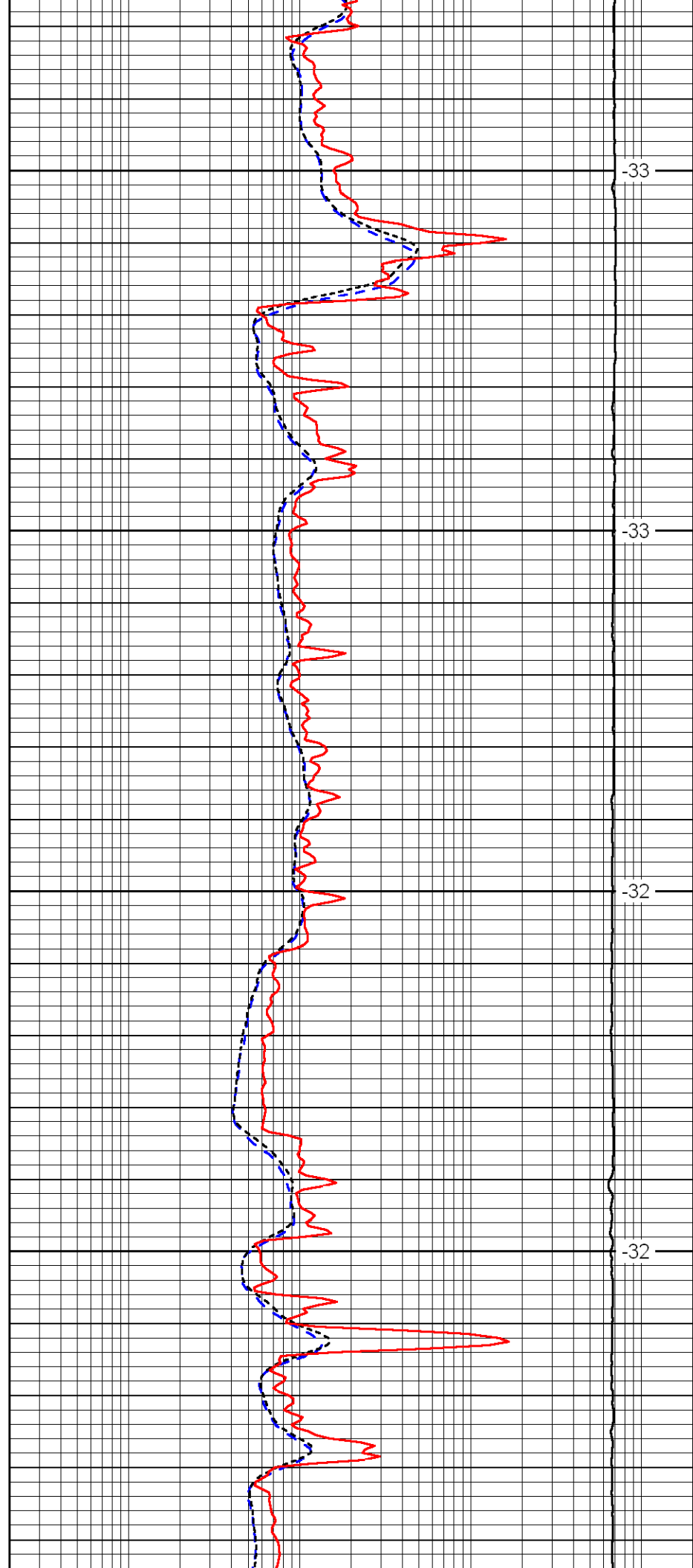


3400

3450

3500

3550

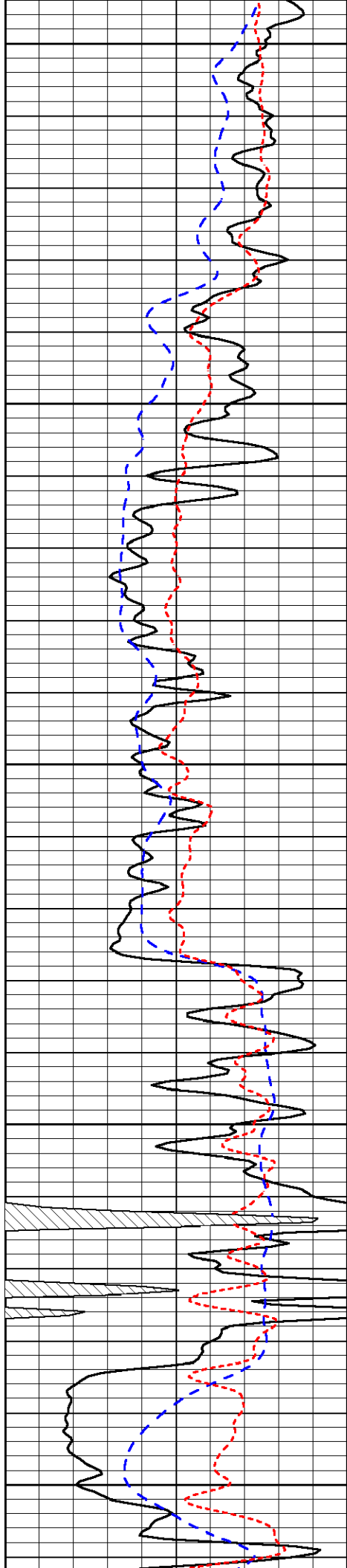


-33

-33

-32

-32



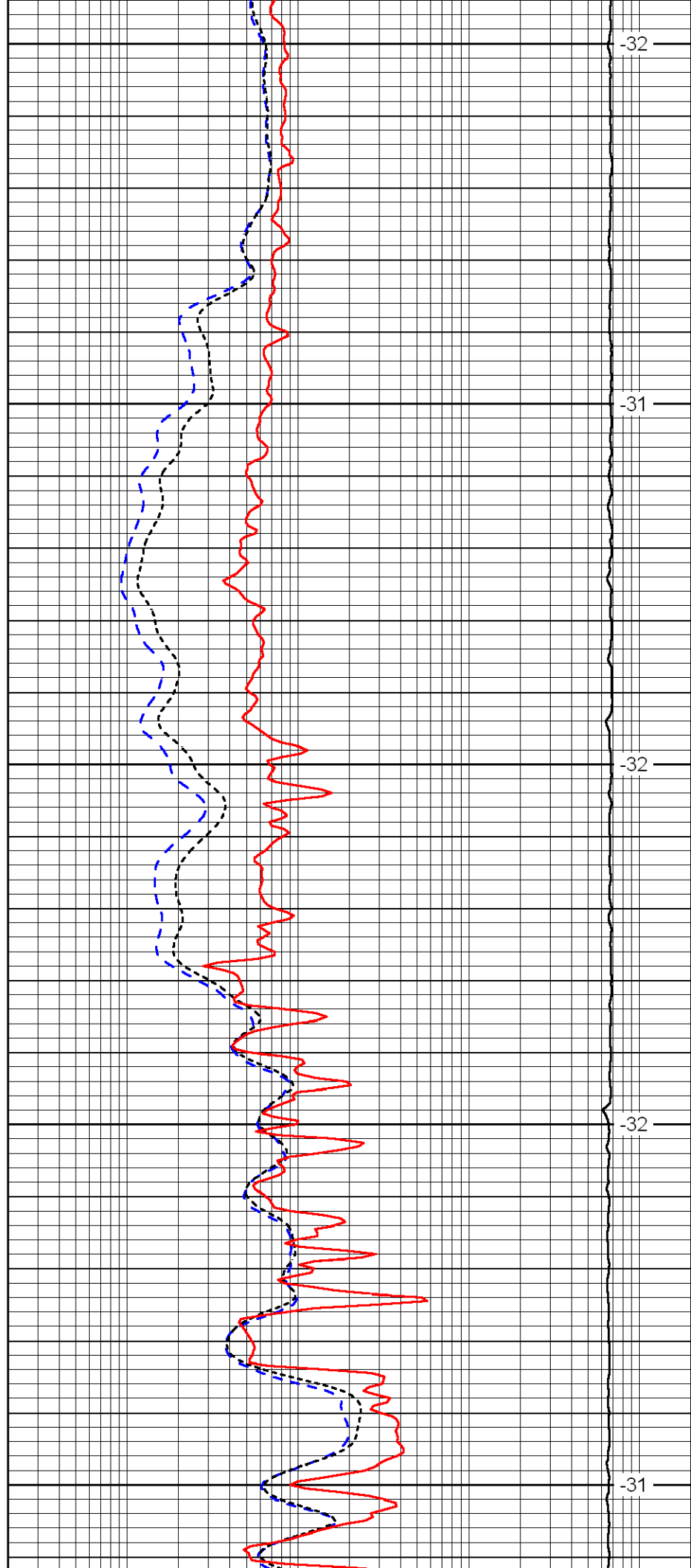
3600

3650

3700

3750

3800



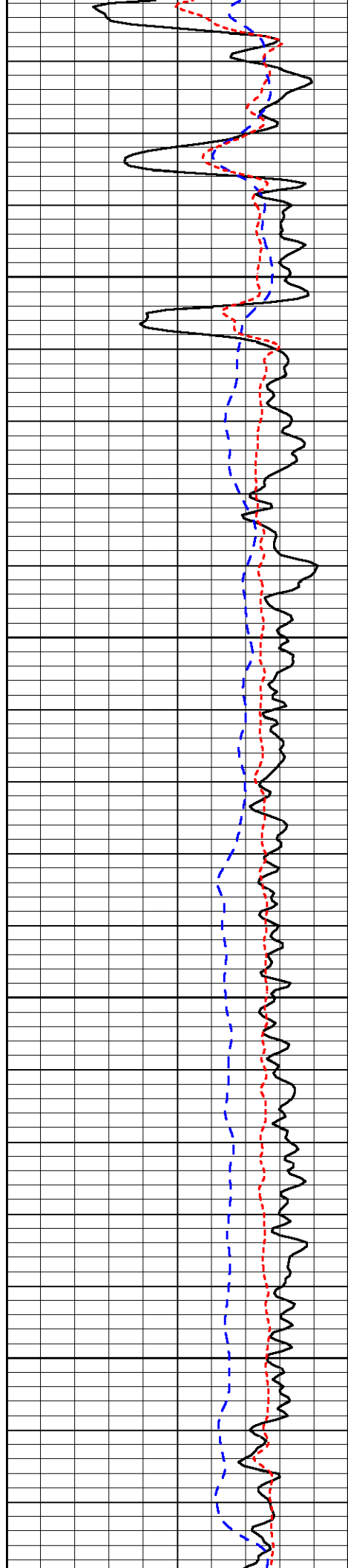
-32

-31

-32

-32

-31

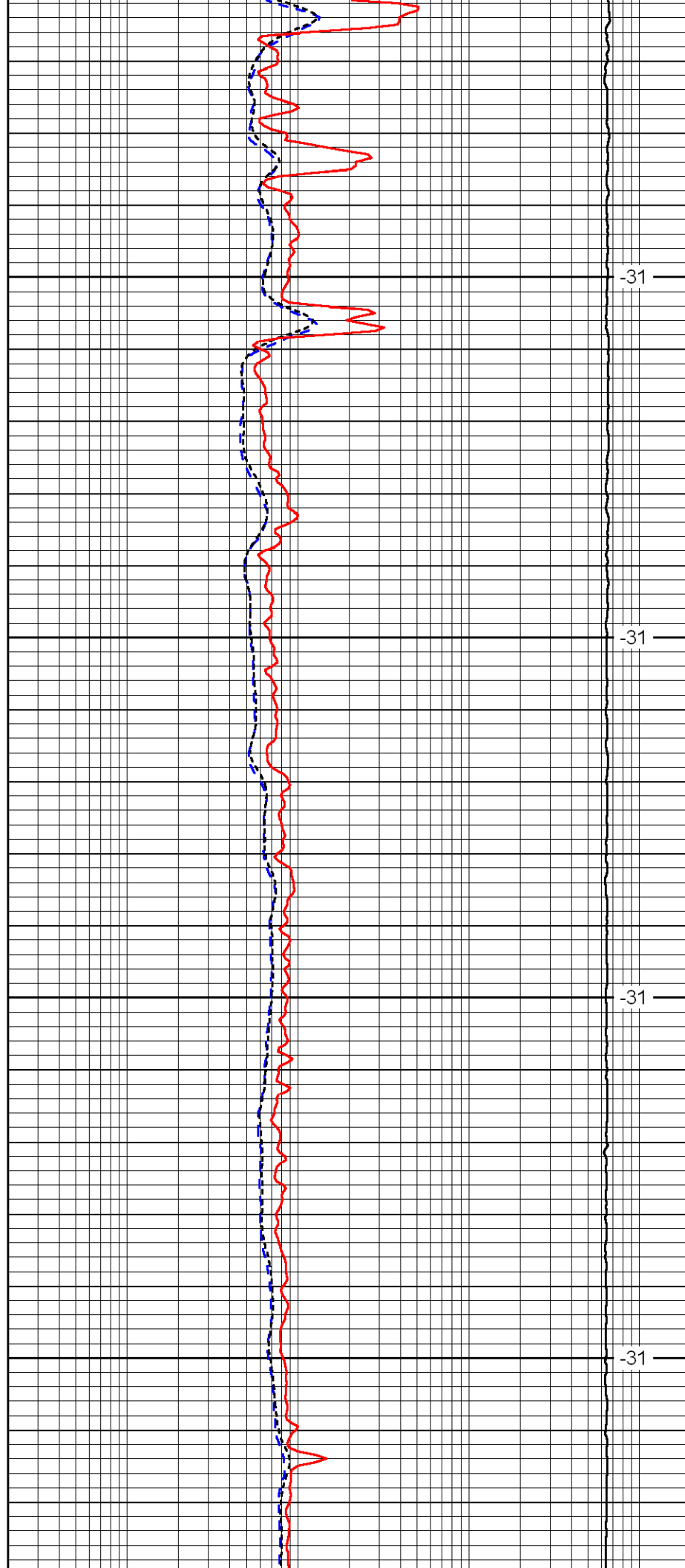


3850

3900

3950

4000

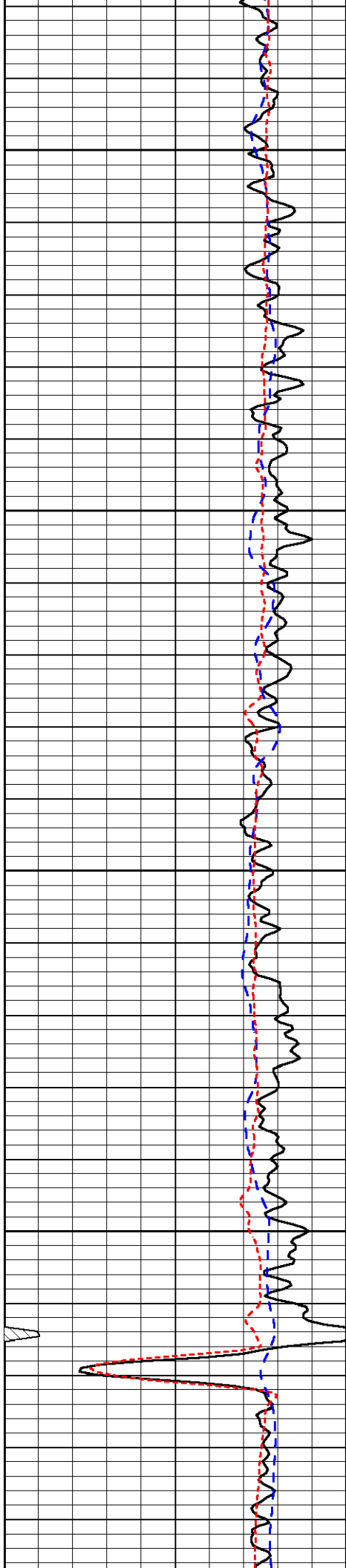


-31

-31

-31

-31



4050

4100

4150

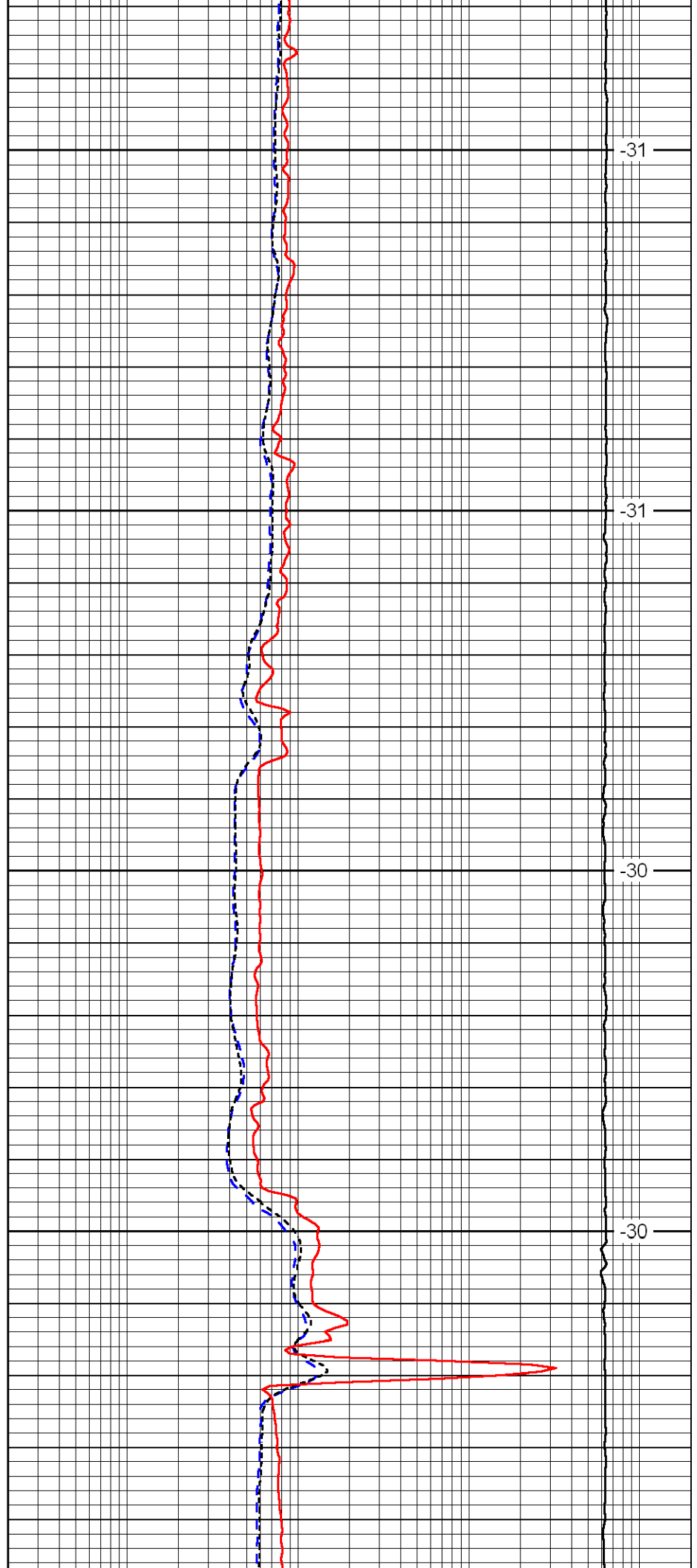
4200

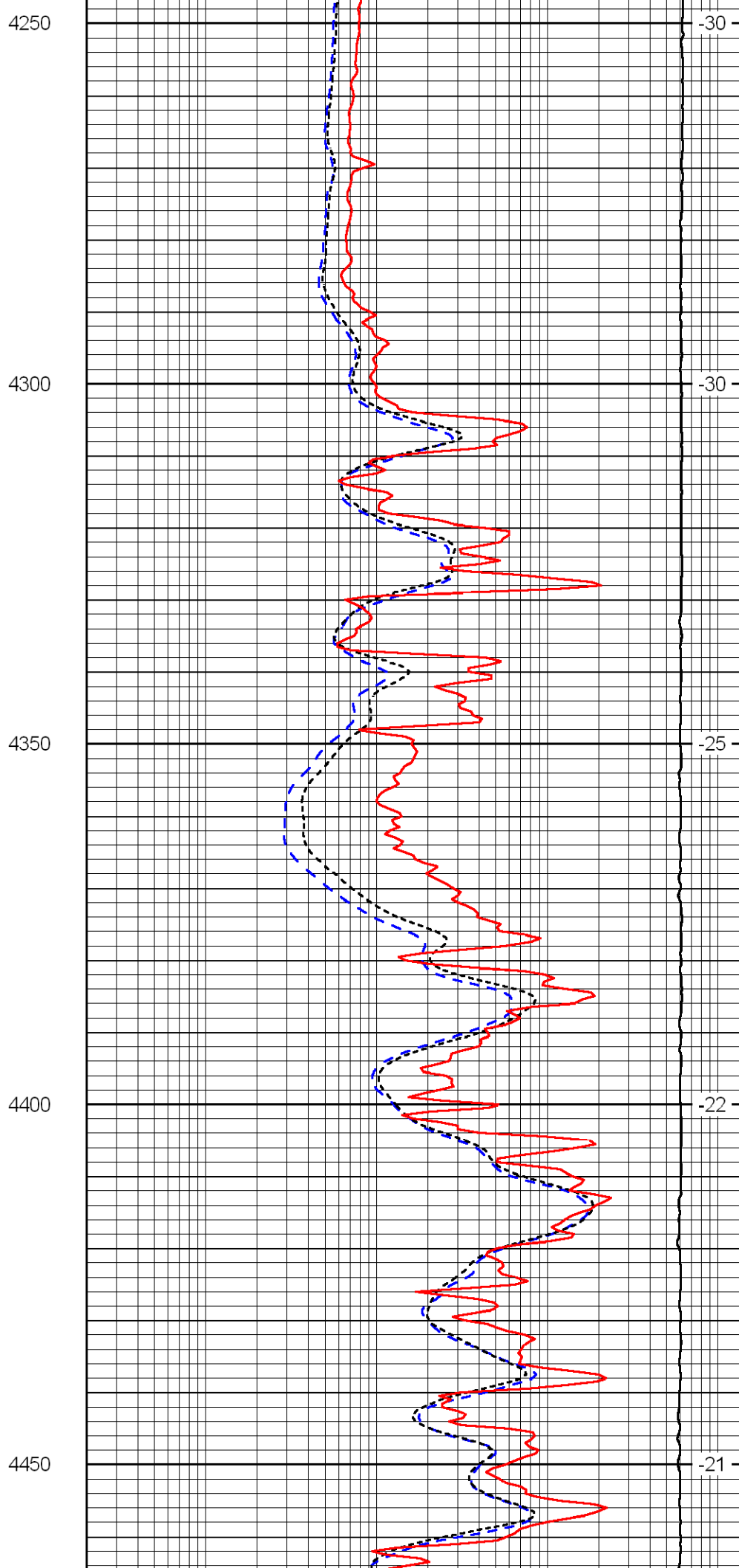
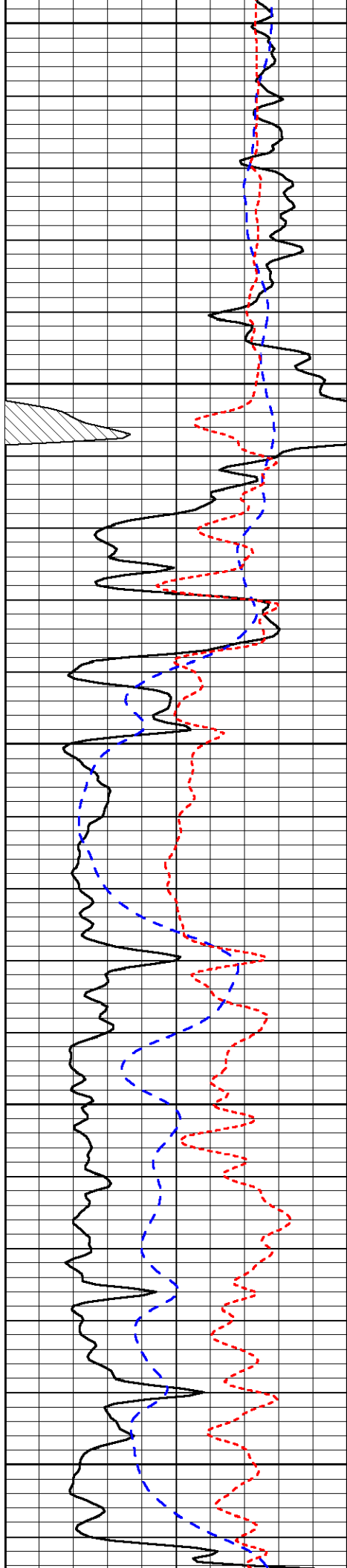
-31

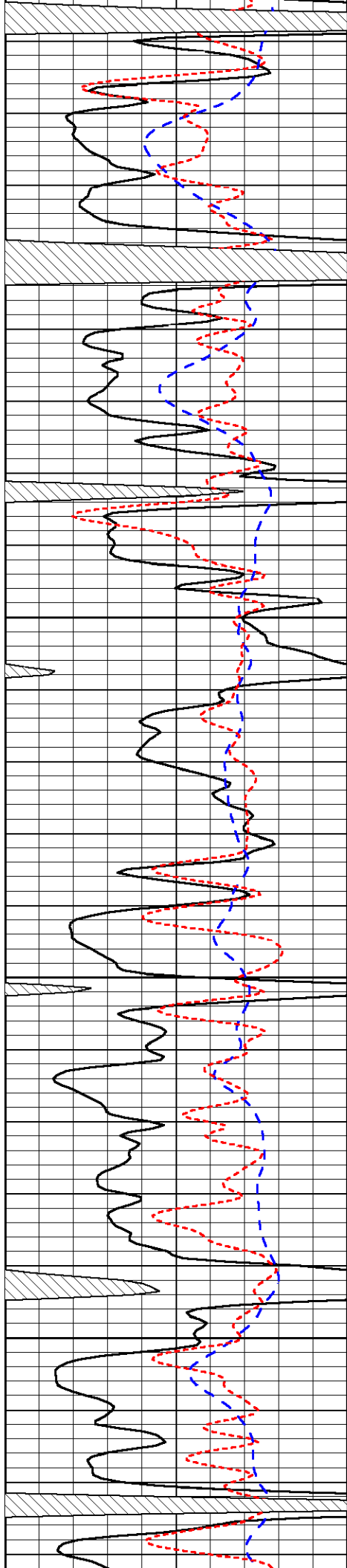
-31

-30

-30





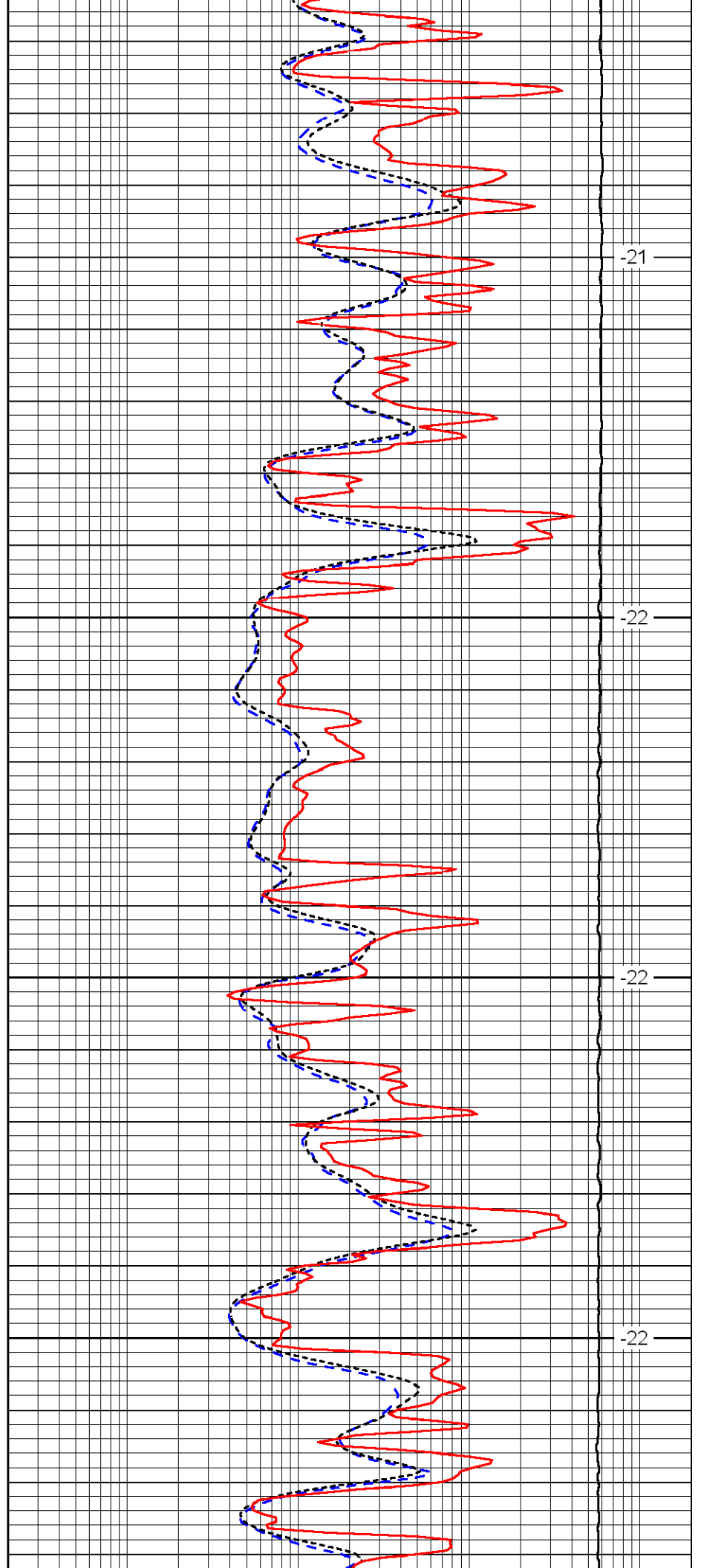


4500

4550

4600

4650

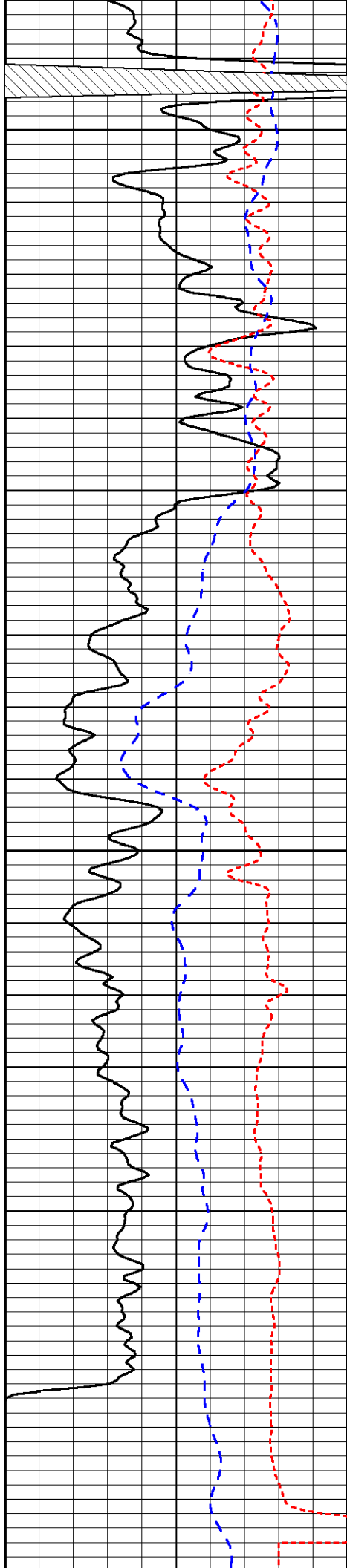


-21

-22

-22

-22



4700

4750

4800

4850

4900

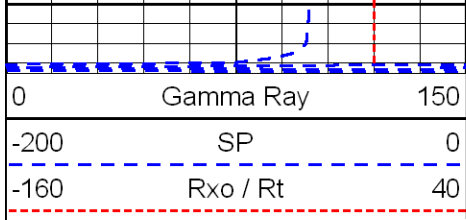
-22

-29

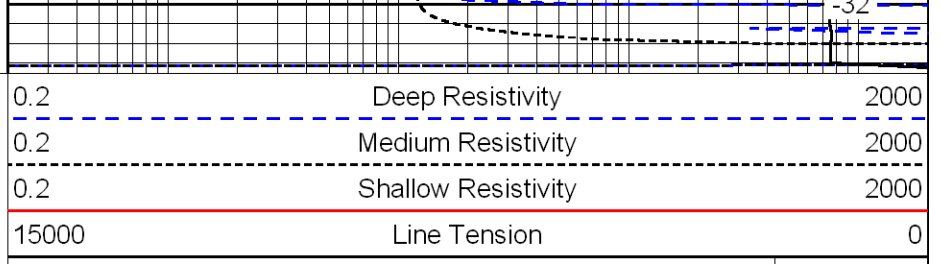
-29

-30

-33



4900



LSPD