



# Microresistivity Log

**DIGITAL LOG (785) 625-3858**

API No.	15-007-23,416-00-00		
Company	Val Energy, Inc.		
Well	Rose Trust No. 2-32		
Field	Wildcat		
County	Barber	State	Kansas
Location	395' FNL & 545' FEL		
Sec: 32	Twp: 34 S	Rge: 11 W	
Permanent Datum	Ground Level	Elevation	1411
Log Measured From	Kelly Bushing	11 Ft. Above Perm. Datum	
Drilling Measured From	Kelly Bushing		
		Other Services	CNL/CDL DIL
		Elevation	K.B. 1422 D.F. 1411 G.L. 1411

Date	1/20/2009	
Run Number	Two	
Depth Driller	4900	
Depth Logger	4898	
Bottom Logged Interval	4897	
Top Log Interval	3000	
Casing Driller	8.625 @ 727	
Casing Logger	700	
Bit Size	7.875	
Type Fluid in Hole	Chemical	
Salinity, ppm CL	6,000	
Density / Viscosity	9.3	75
pH / Fluid Loss	10.0	9.6
Source of Sample	Flowline	
Rm @ Meas. Temp	.86 @ 62	
Rmf @ Meas. Temp	.65 @ 62	
Rmc @ Meas. Temp	1.16 @ 62	
Source of Rmf / Rmc	Charts	
Rm @ BHT	.42 @ 127	
Operating Rig Time	4 1/2 Hours	
Max Rec. Temp. F	127	
Equipment Number	4	
Location	Hays	
Recorded By	K. Bange	
Witnessed By	Steve Van Buskirk	

<<< Fold Here >>>

All interpretations are opinions based on inferences from electrical or other measurements and we cannot and do not guarantee the accuracy or correctness of any interpretation, and we shall not, except in the case of gross or willful negligence on our part, be liable or responsible for any loss, costs, damages, or expenses incurred or sustained by anyone resulting from any interpretation made by any of our officers, agents or employees. These interpretations are also subject to our general terms and conditions set out in our current Price Schedule.

### Comments

Thank you for using Log-Tech, Inc.  
(785) 625-3858

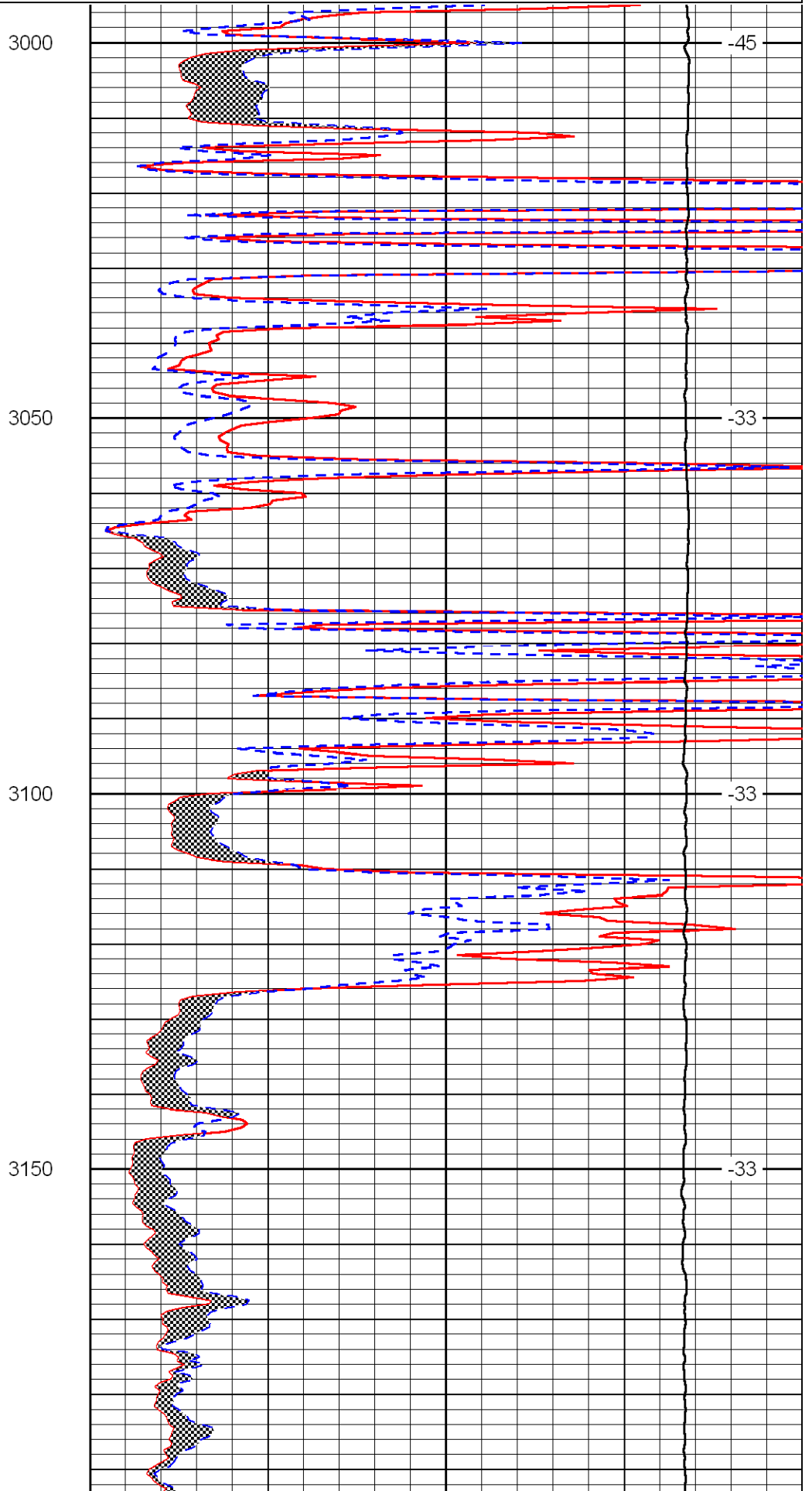
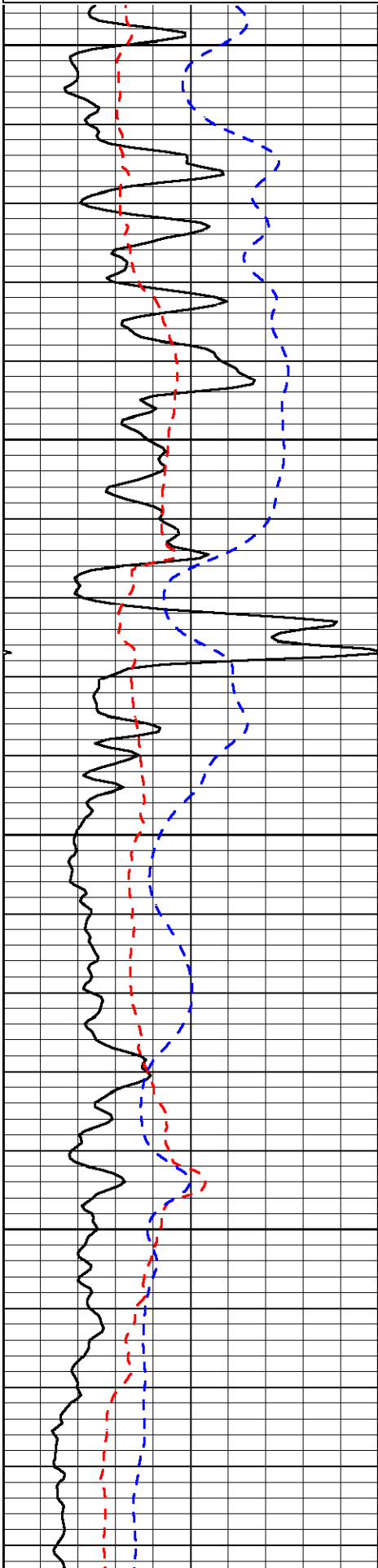
Med. Lodge S. to Hwy 2, 2 E. to Northstar rd, 1 3/4 N, W into

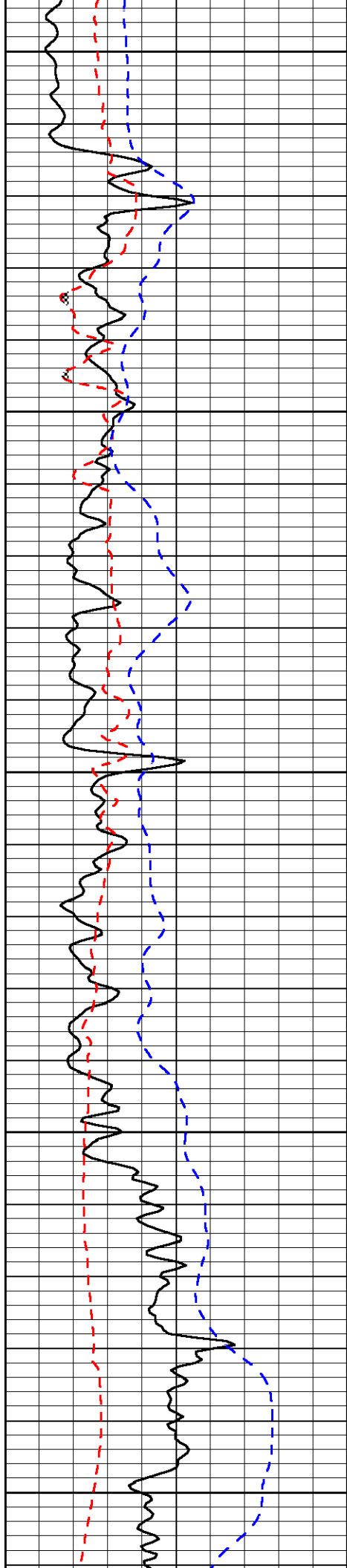
Database File: c:\warrior\data\val\_rose trust no. 2-32\valhd.db  
 Dataset Pathname: dil\val2in  
 Presentation Format: micro  
 Dataset Creation: Tue Jan 20 16:40:07 2009  
 Charted by: Depth in Feet scaled 1:240

0	Gamma Ray	150
6	Micro Log Caliper (GAPI)	16
-200	SP	0

0	Micro Inverse 1 X 1	40
0	Micro Normal 2"	40
10000	Line Weight	0

LSPD





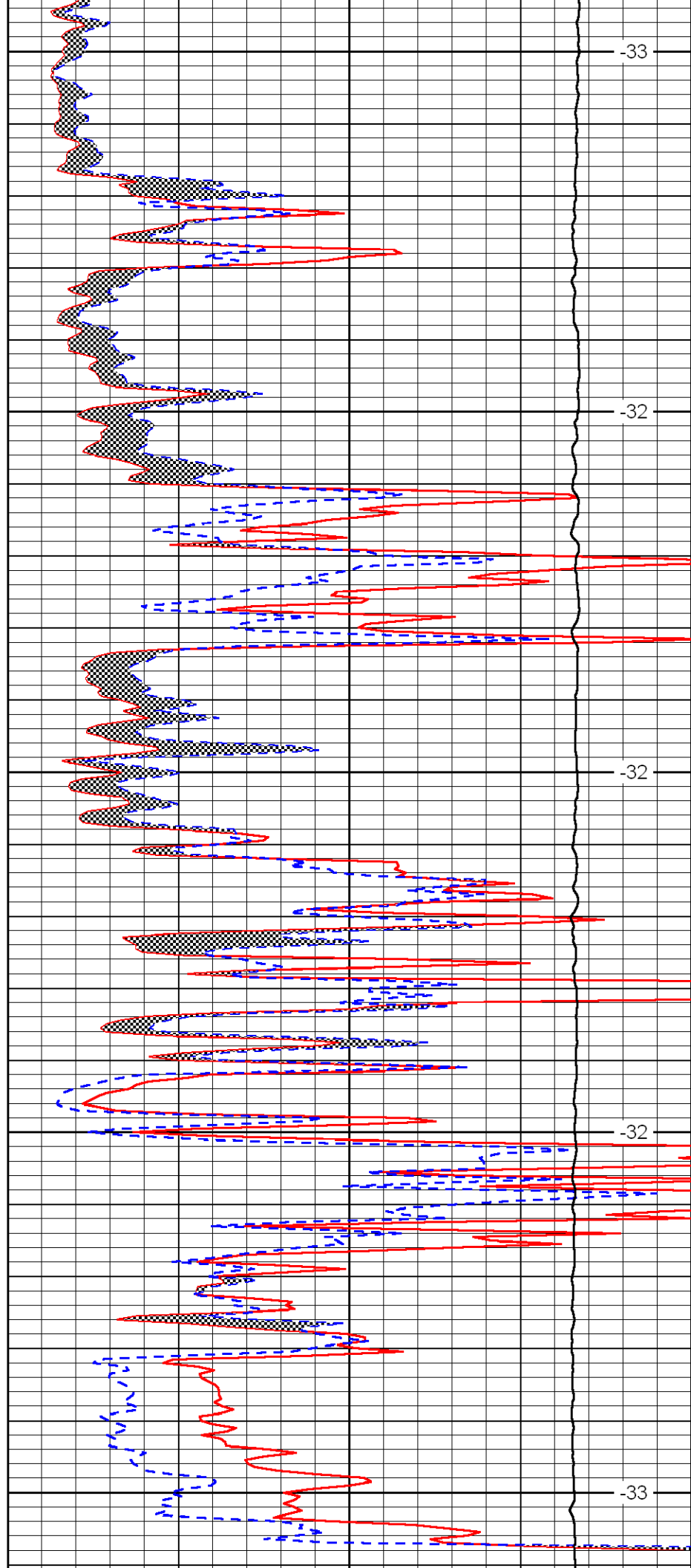
3200

3250

3300

3350

3400



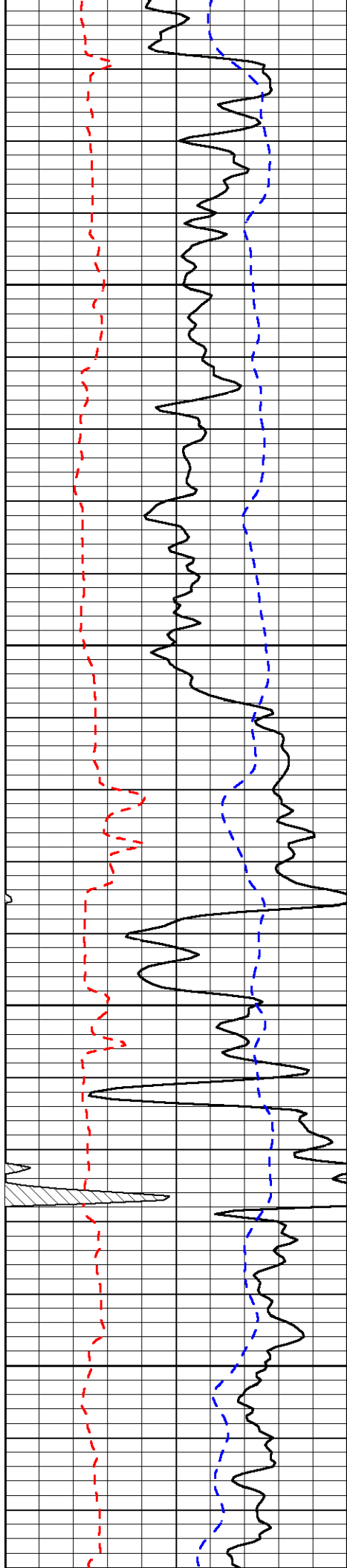
-33

-32

-32

-32

-33

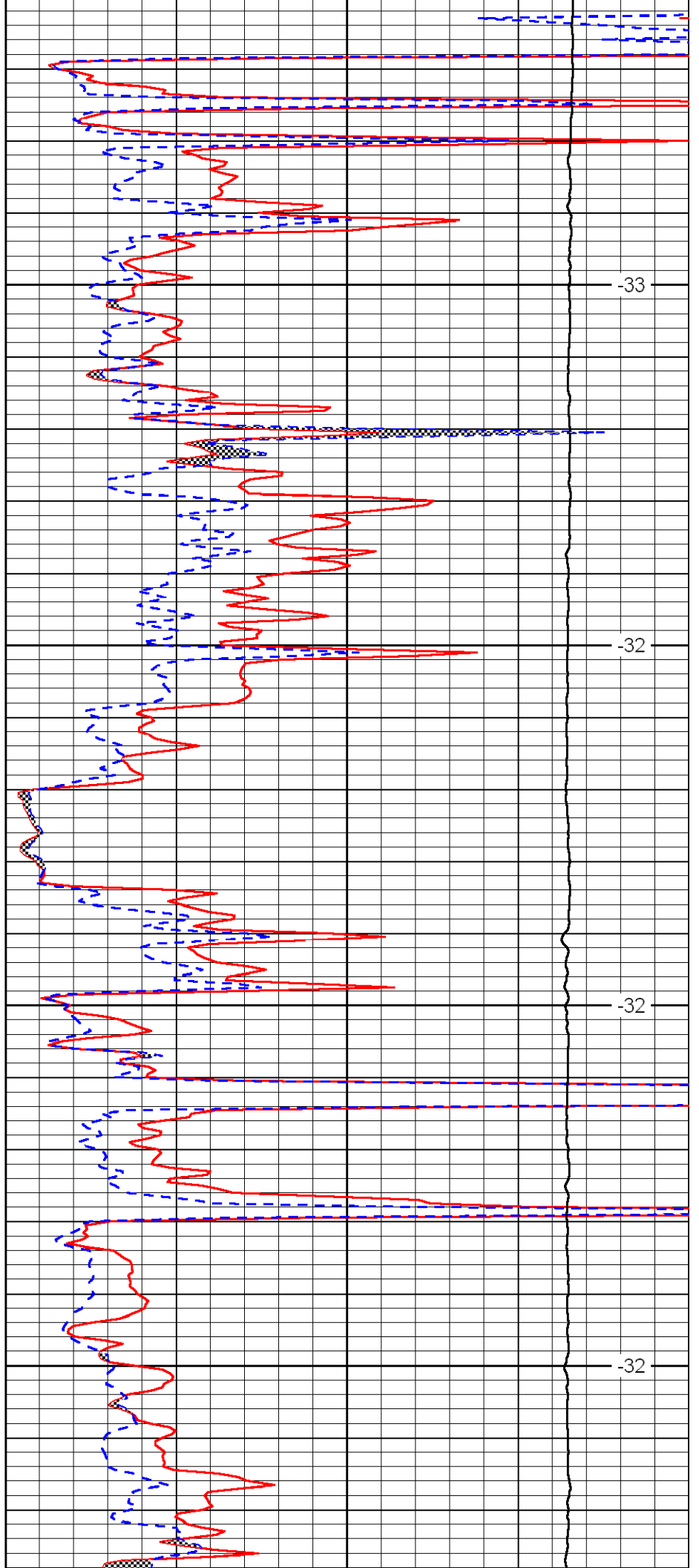


3450

3500

3550

3600

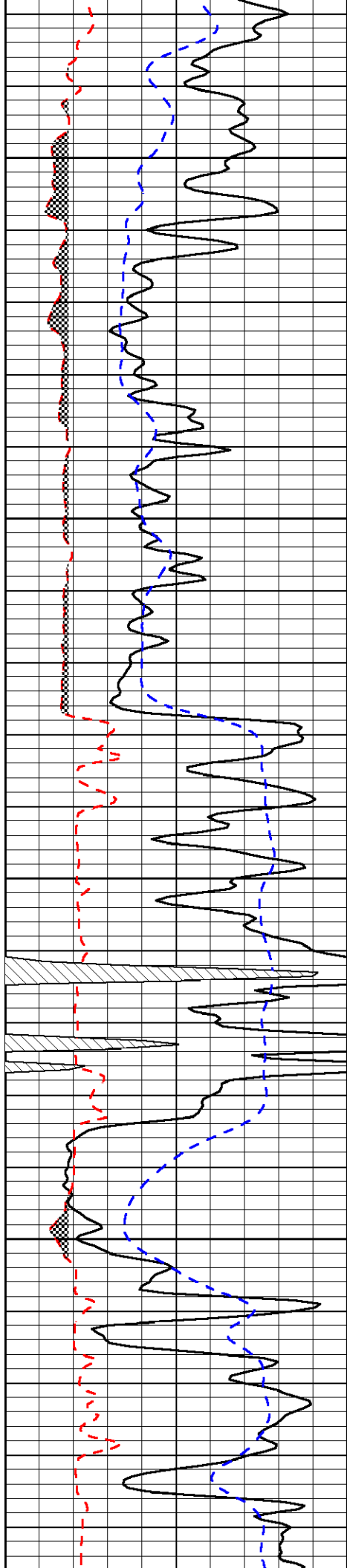


-33

-32

-32

-32

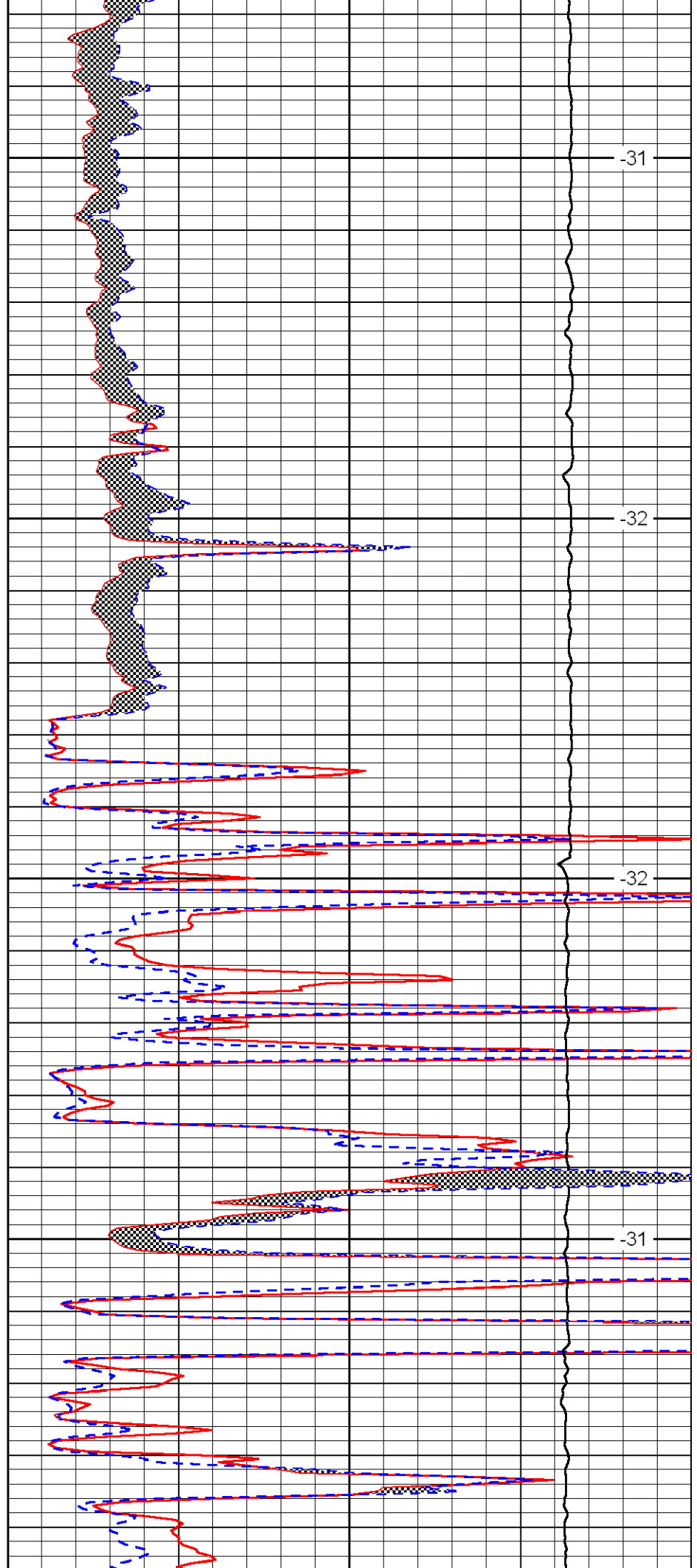


3650

3700

3750

3800

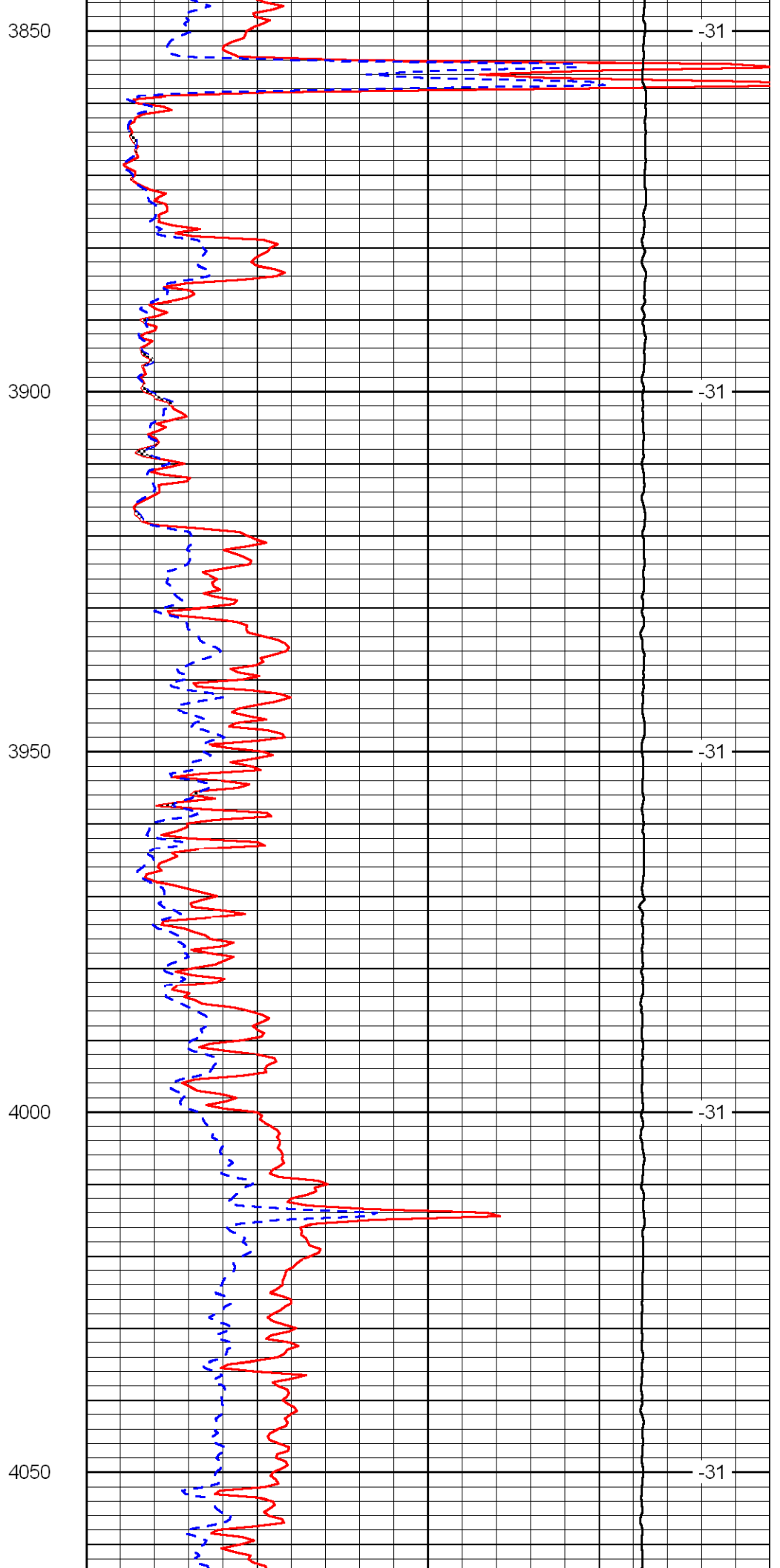
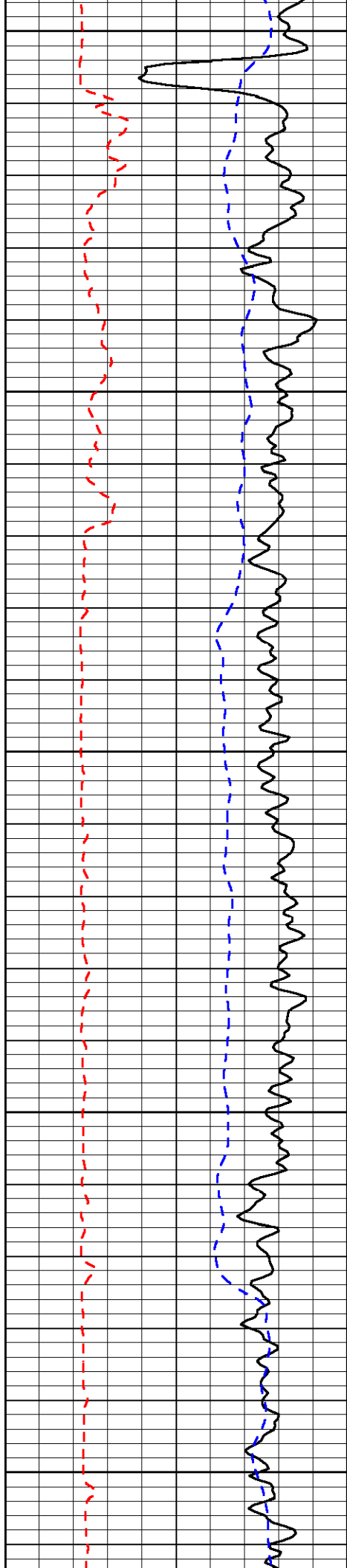


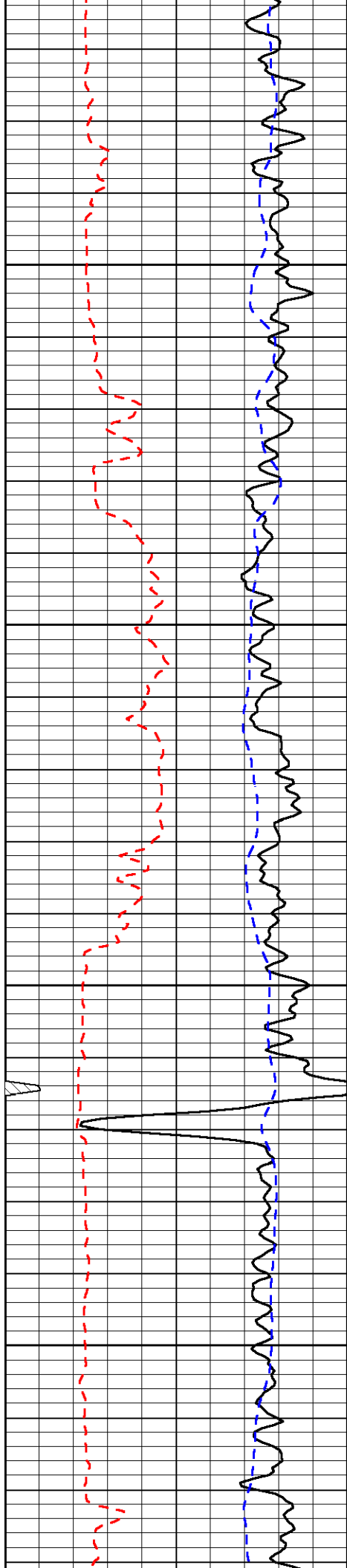
-31

-32

-32

-31



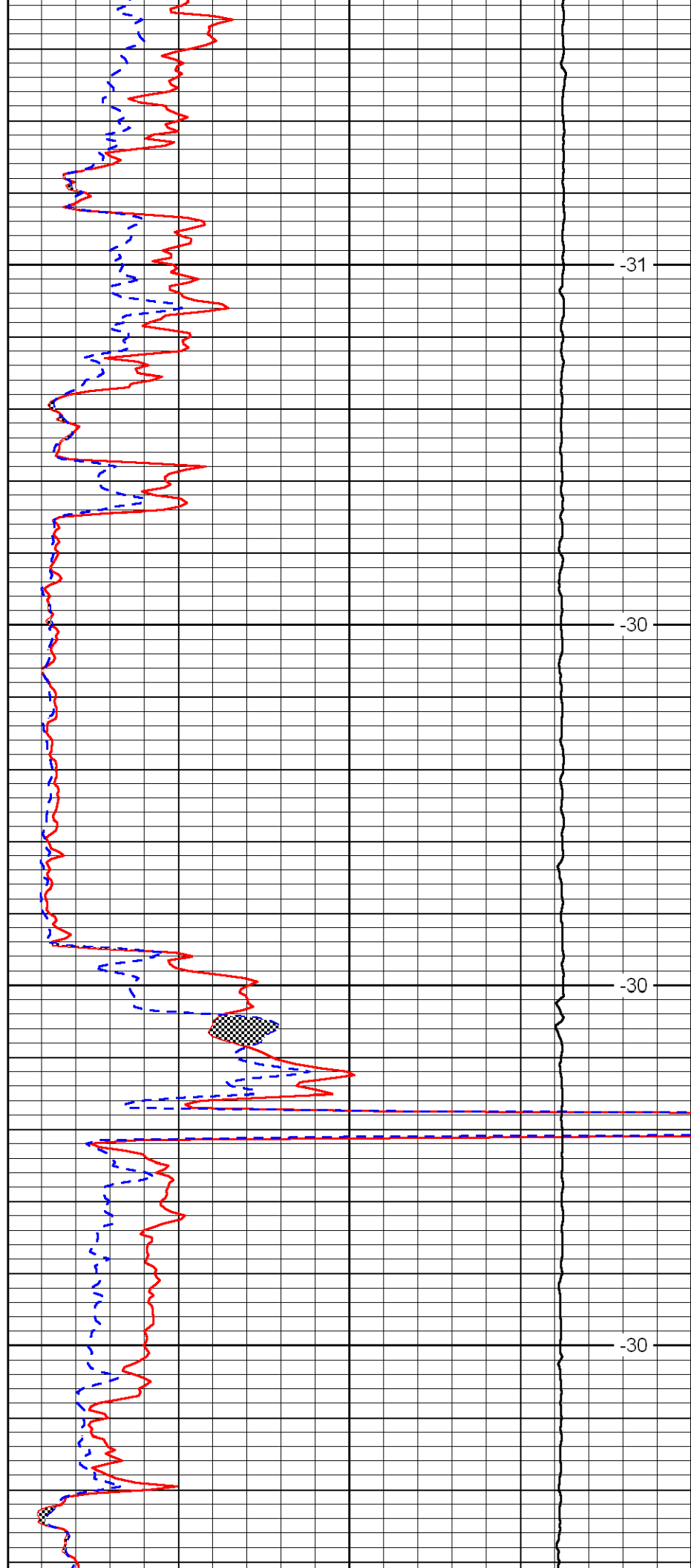


4100

4150

4200

4250

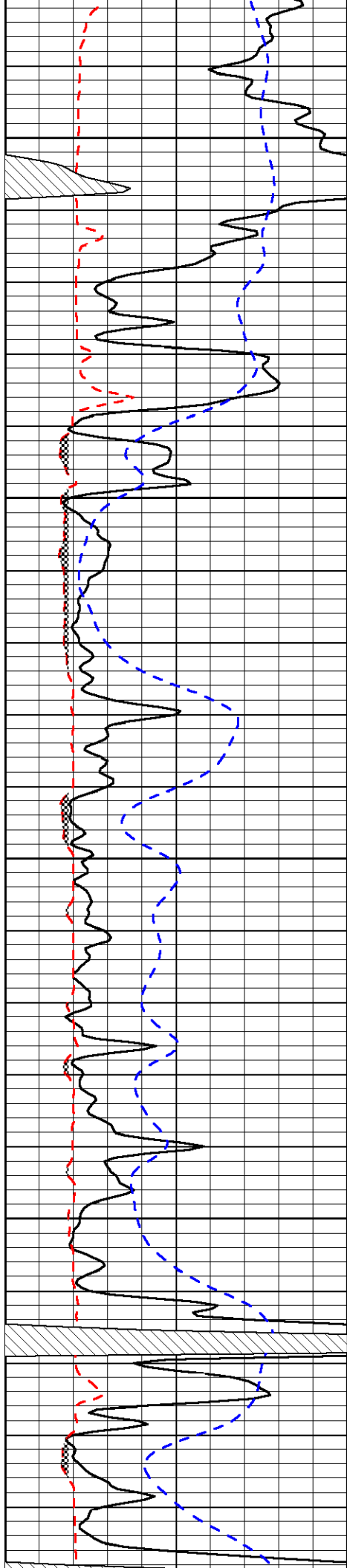


-31

-30

-30

-30

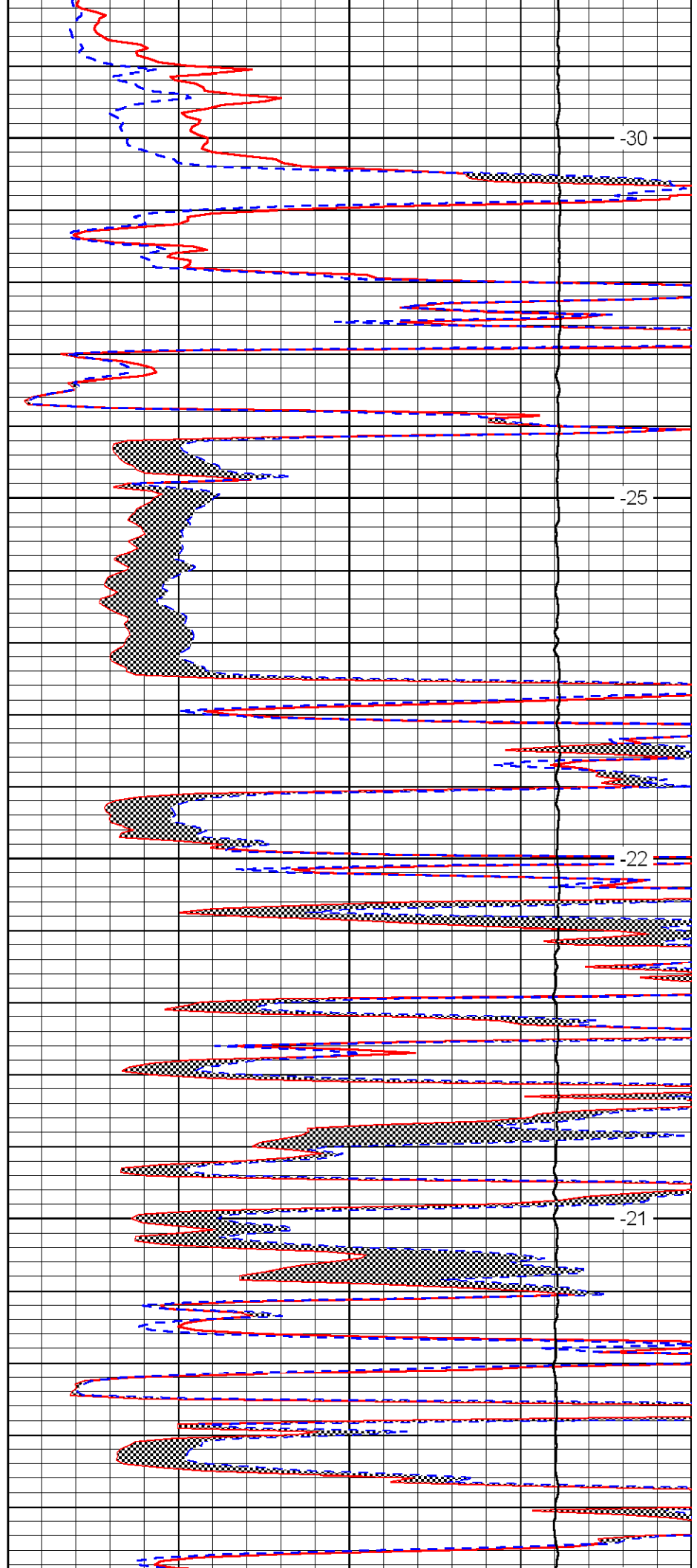


4300

4350

4400

4450



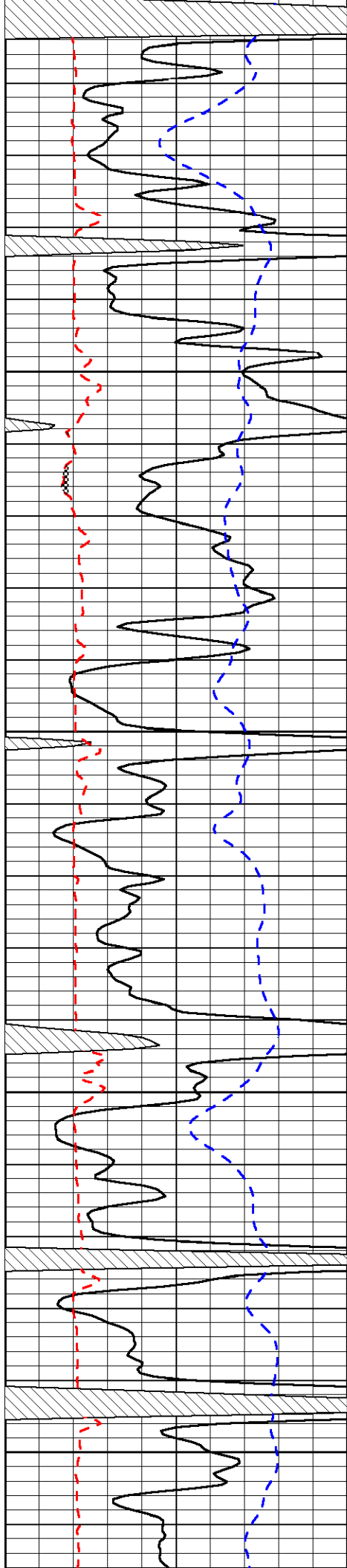
-30

-25

-22

-21





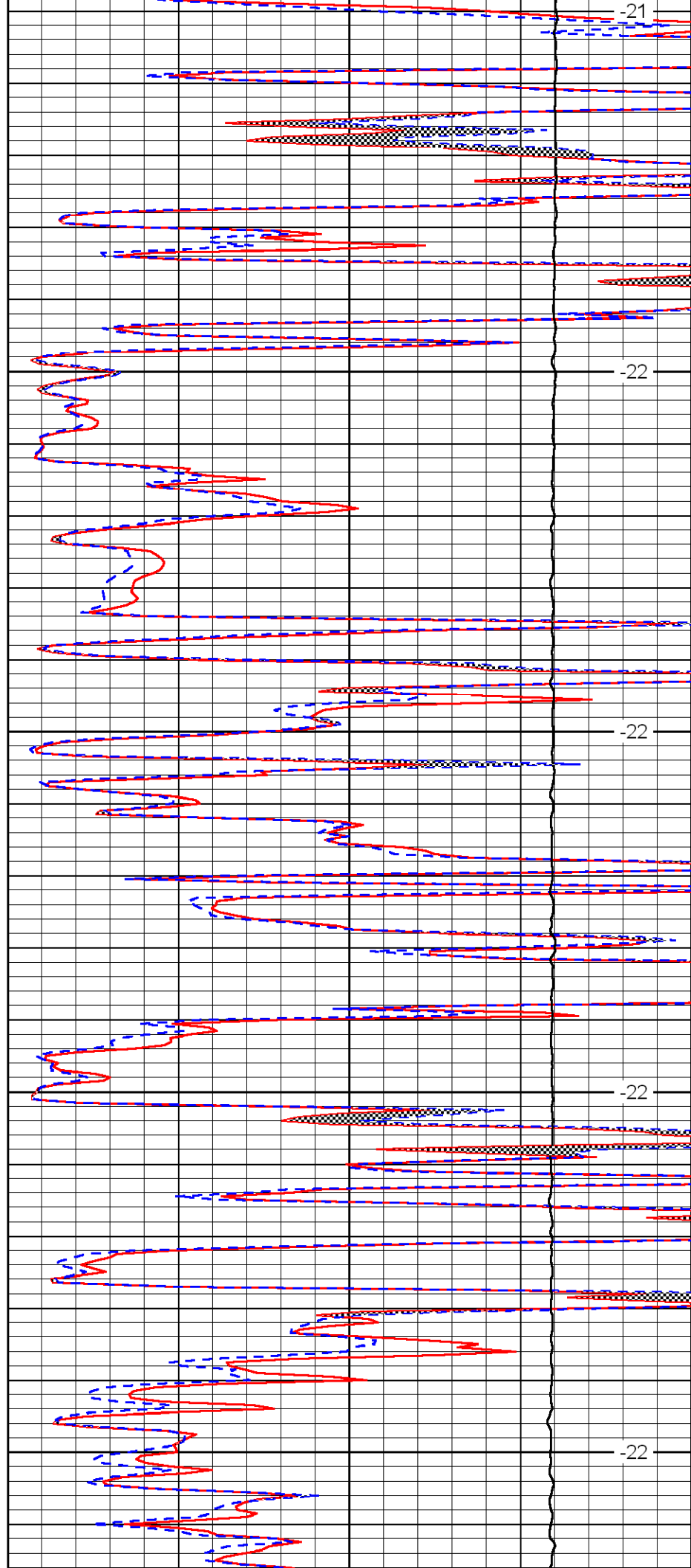
4500

4550

4600

4650

4700



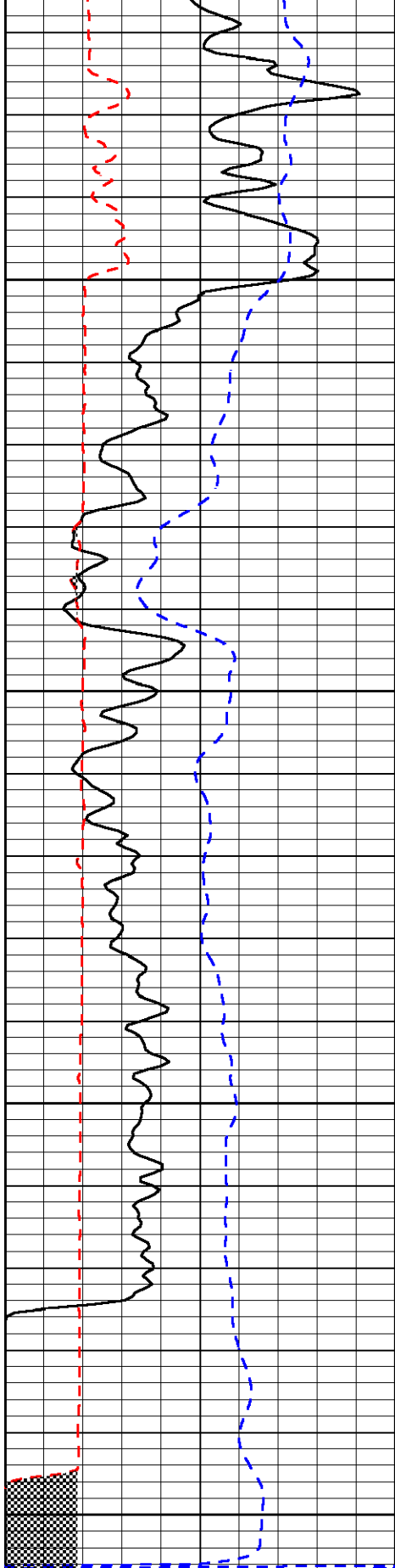
-21

-22

-22

-22

-22

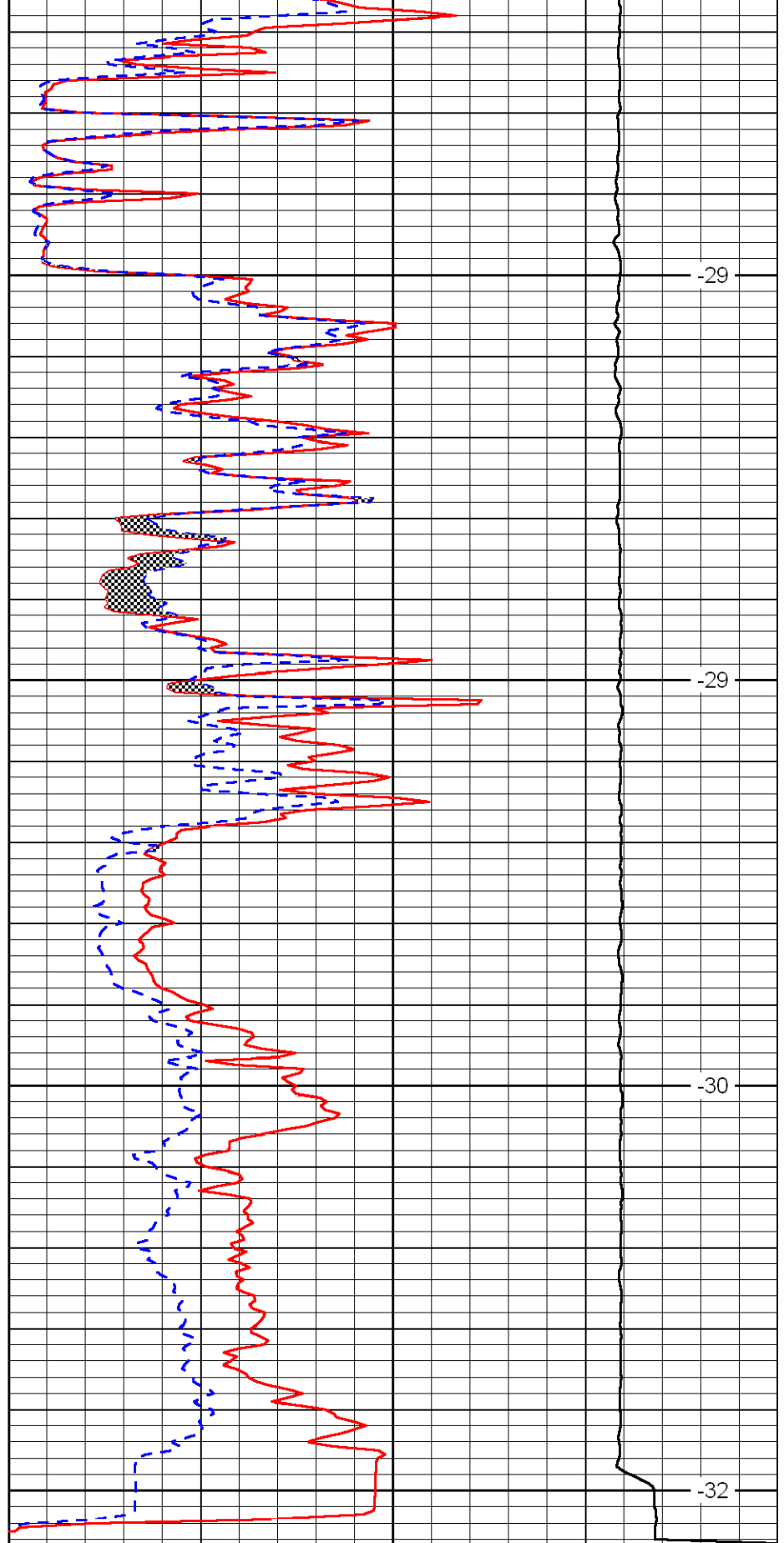


4750

4800

4850

4900



-29

-29

-30

-32

0	Gamma Ray	150
6	Micro Log Caliper (GAPI)	16
-200	SP	0

0	Micro Inverse 1 X 1	40
0	Micro Normal 2''	40
10000	Line Weight	0

LSPD