



Dual Compensated
Porosity Log

DIGITAL LOG (785) 625-3858

API No.	15-015-23,826-00-00		
Company	Vess Oil Corporation		
Well	Skaer A No. 23		
Field	Augusta		
County	Butler		
State	Kansas		
Location	1047' FNL & 1593' FEL		
Sec: 35	Twp: 27S	Rge: 4E	Other Services DIL MEL
Permanent Datum	Ground Level	Elevation 1292	Elevation
Log Measured From	Kelly Bushing	9 Ft. Above Perm. Datum	K.B. 1301
Drilling Measured From	Kelly Bushing		D.F. G.L. 1292

Date	08/04/2009		
Run Number	One		
Type Log	CNL / CDL		
Depth Driller	2608		
Depth Logger	2610		
Bottom Logged Interval	2589		
Top Logged Interval	1400		
Type Fluid In Hole	Chemical		
Salinity, PPM CL	1,900		
Density	9.4		
Level	Full		
Max. Rec. Temp. F	104		
Operating Rig Time	3 Hours		
Equipment -- Location	10 Hays		
Recorded By	Jason Wellbrock		
Witnessed By	Roger Martin		

Run No	Bit	Borehole Record		Casing Record	
		From	To	From	To
1	12.25	00	260	8.625	24#
2	7.875	260	2608		

<<< Fold Here >>>

All interpretations are opinions based on inferences from electrical or other measurements and we cannot and do not guarantee the accuracy or correctness of any interpretation, and we shall not, except in the case of gross or willful negligence on our part, be liable or responsible for any loss, costs, damages, or expenses incurred or sustained by anyone resulting from any interpretation made by any of our officers, agents or employees. These interpretations are also subject to our general terms and conditions set out in our current Price Schedule.

Comments

Thank you for using Log-Tech, Inc.
(785) 625-3858

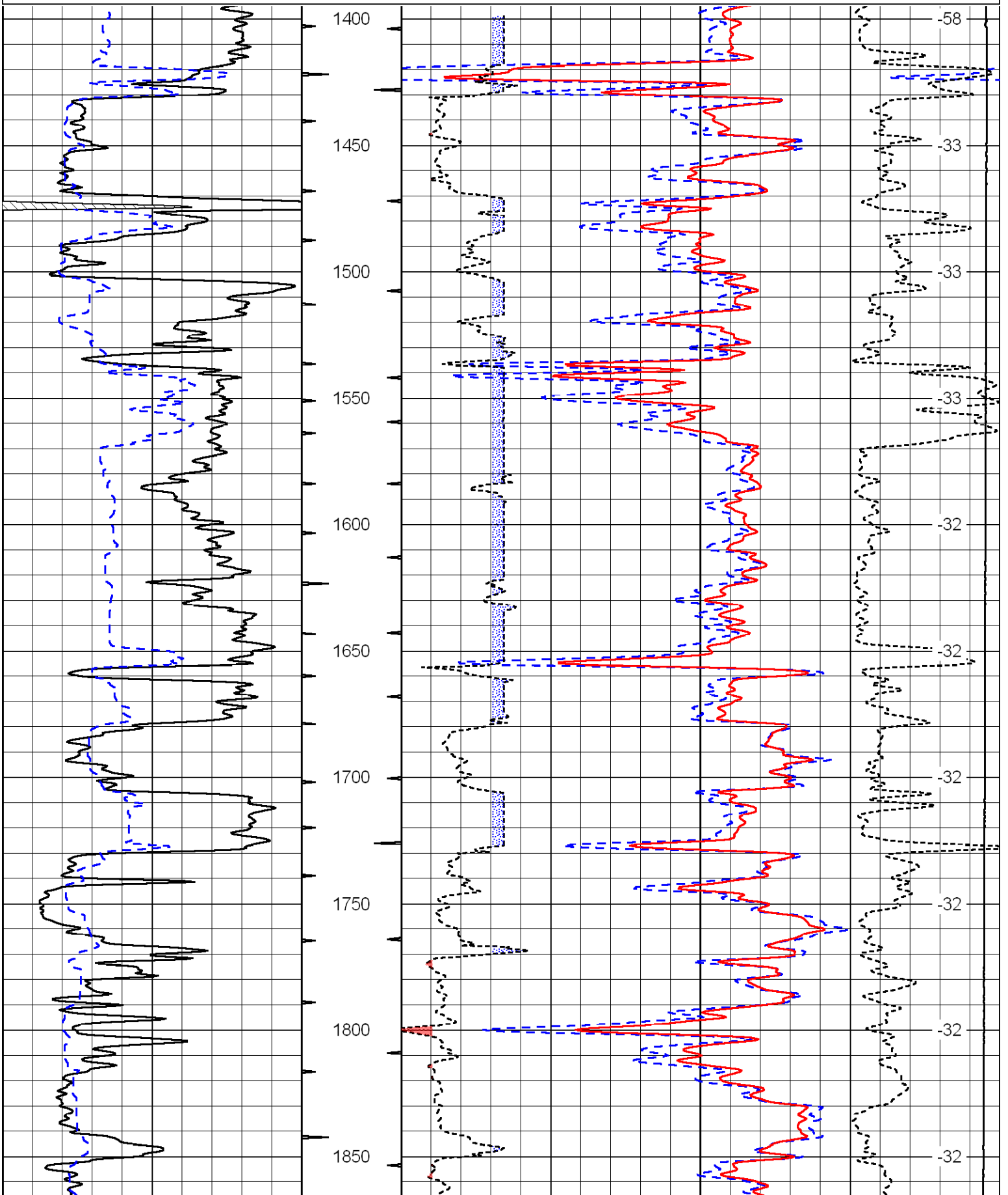
Augusta Edge of town to Industrial Park Go Left, 3/4 E, to rd shumway, 1 S to 110rd West Into threw red ga

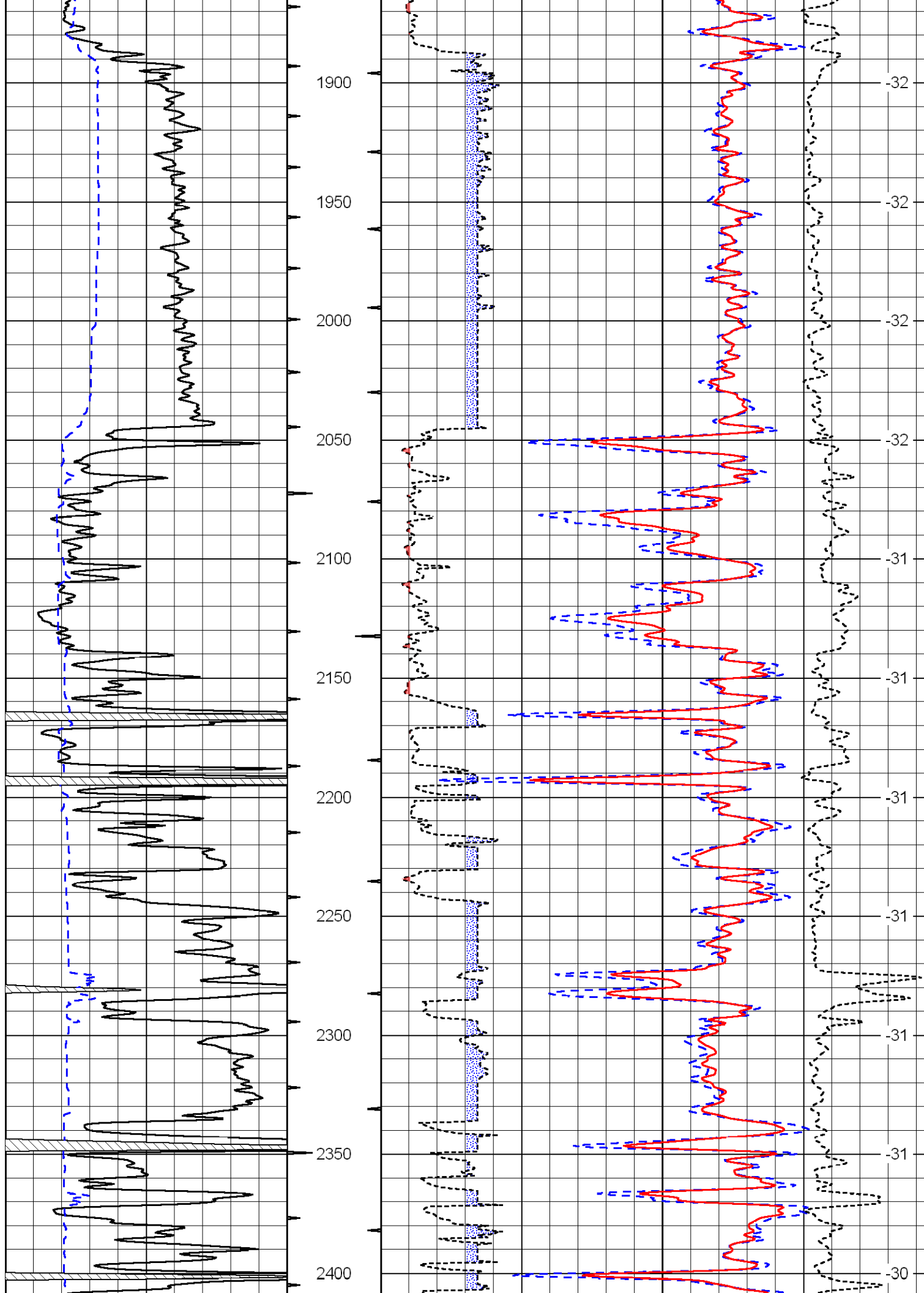
Database File: c:\warrior\data\vess_skaer a no. 23\vesshd.db
 Dataset Pathname: dil/vess
 Presentation Format: cdl
 Dataset Creation: Tue Aug 04 04:53:38 2009
 Charted by: Depth in Feet scaled 1:600

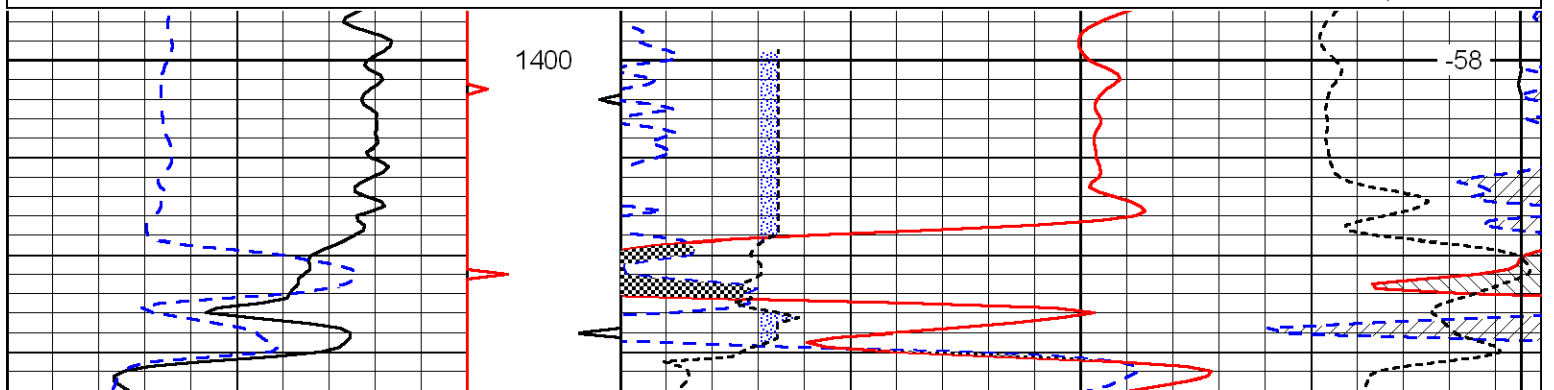
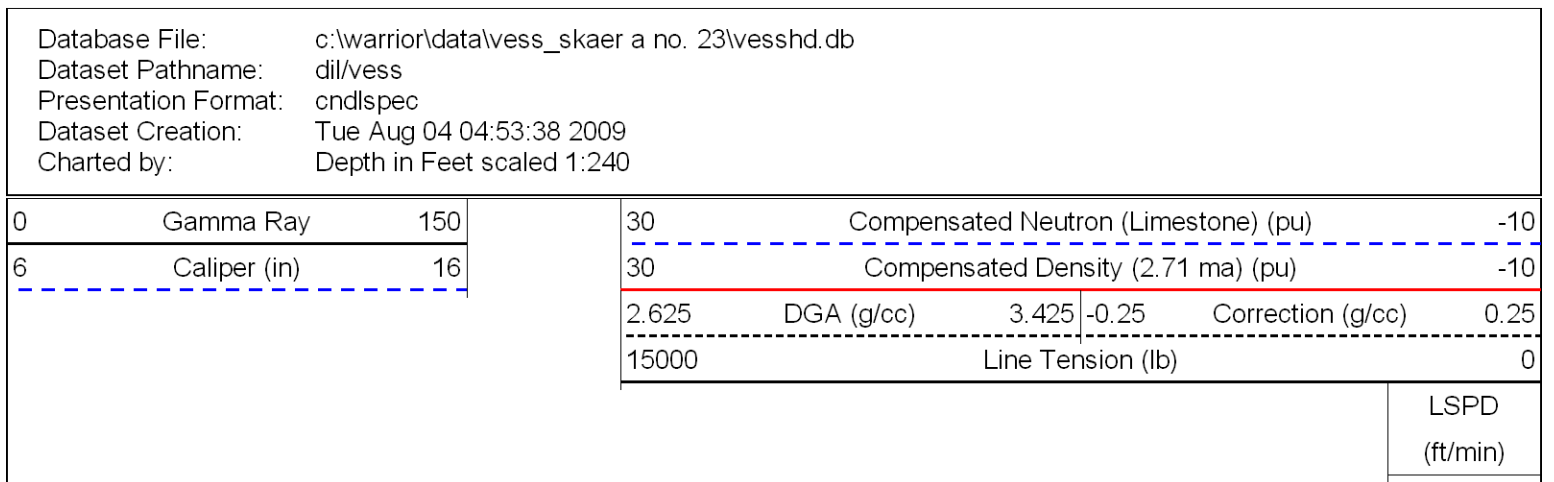
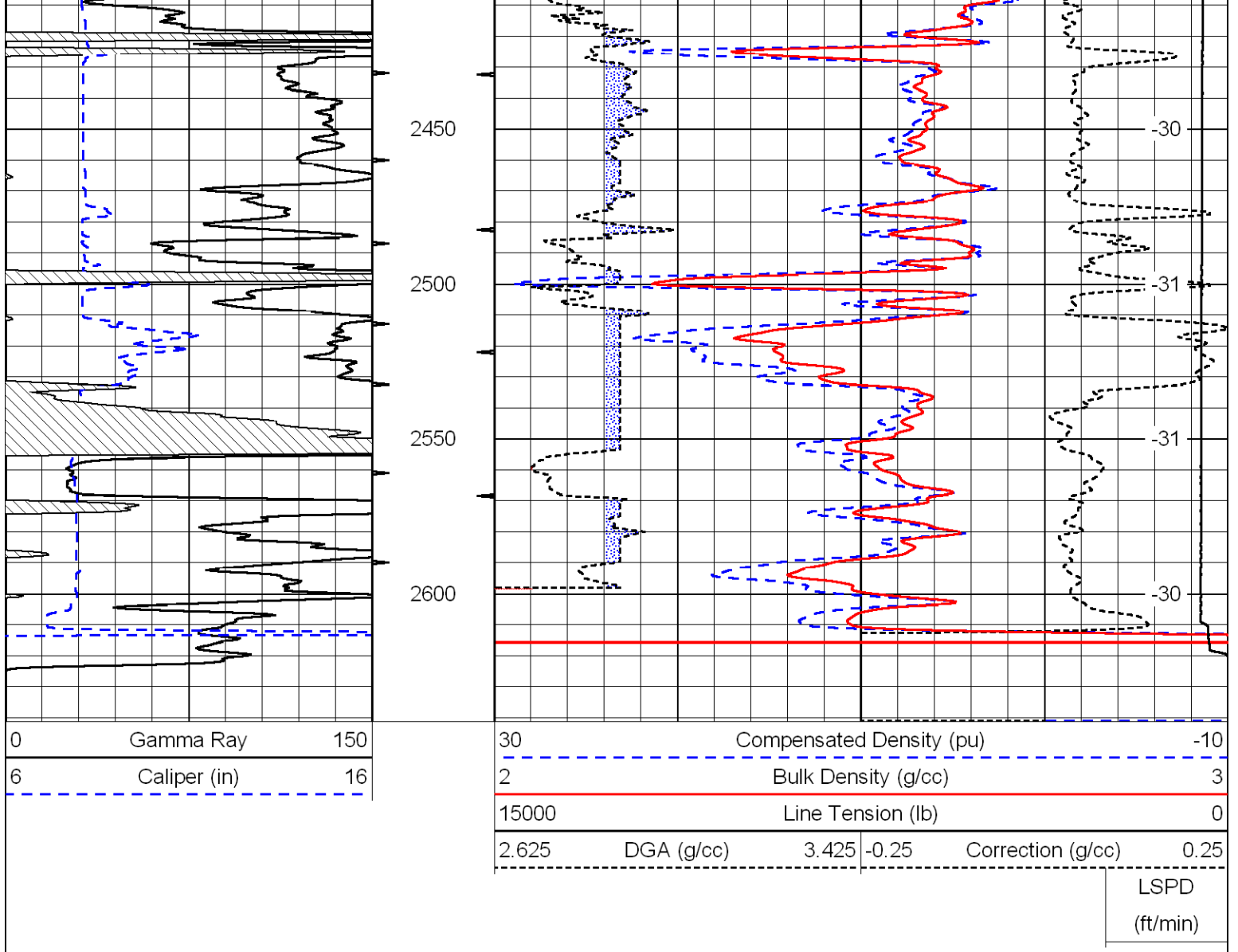
0	Gamma Ray	150
6	Caliper (in)	16

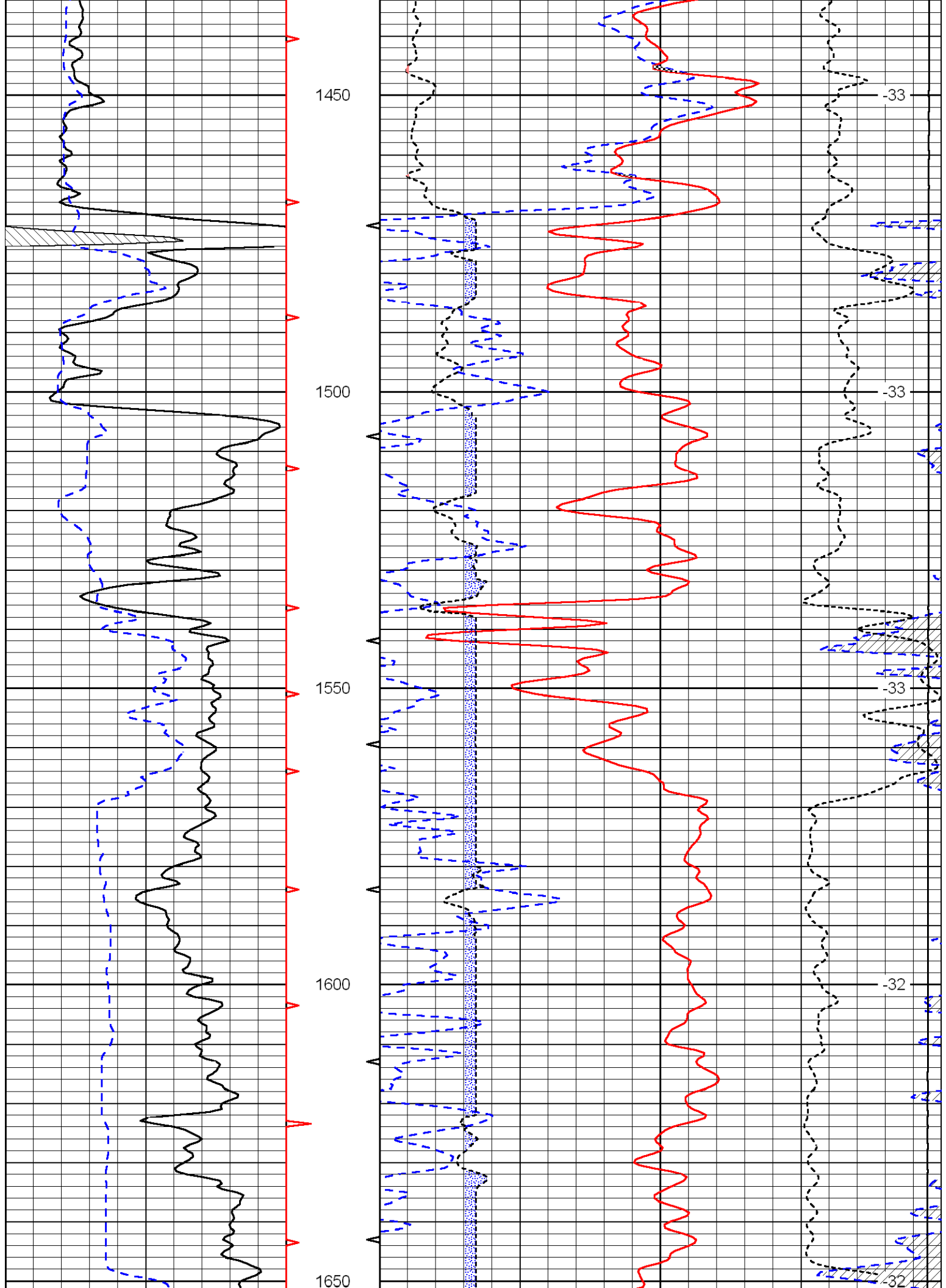
30	Compensated Density (pu)		-10
2	Bulk Density (g/cc)		3
15000	Line Tension (lb)		0
2.625	DGA (g/cc)	3.425	-0.25
Correction (g/cc)			0.25

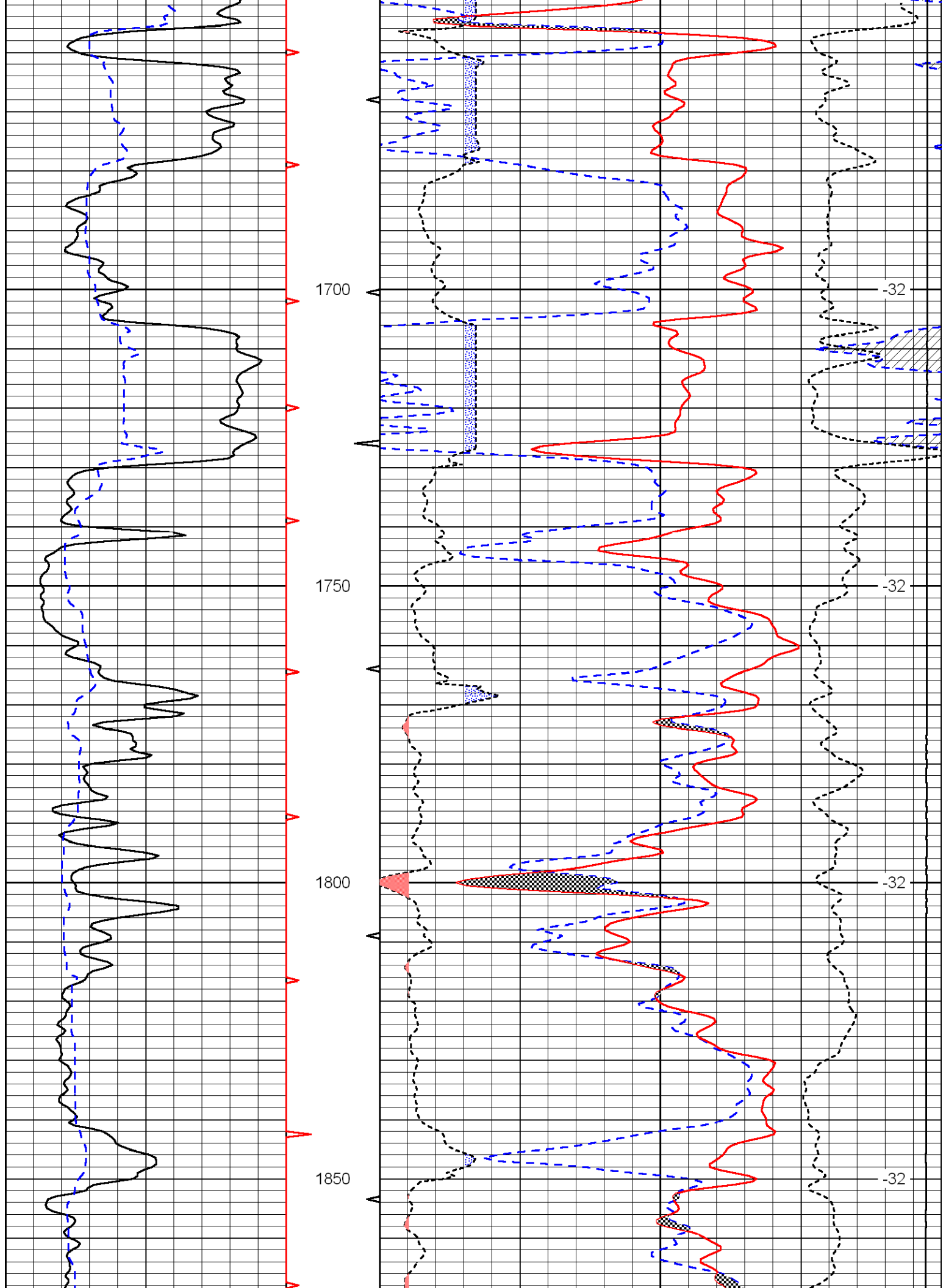
LSPD
(ft/min)

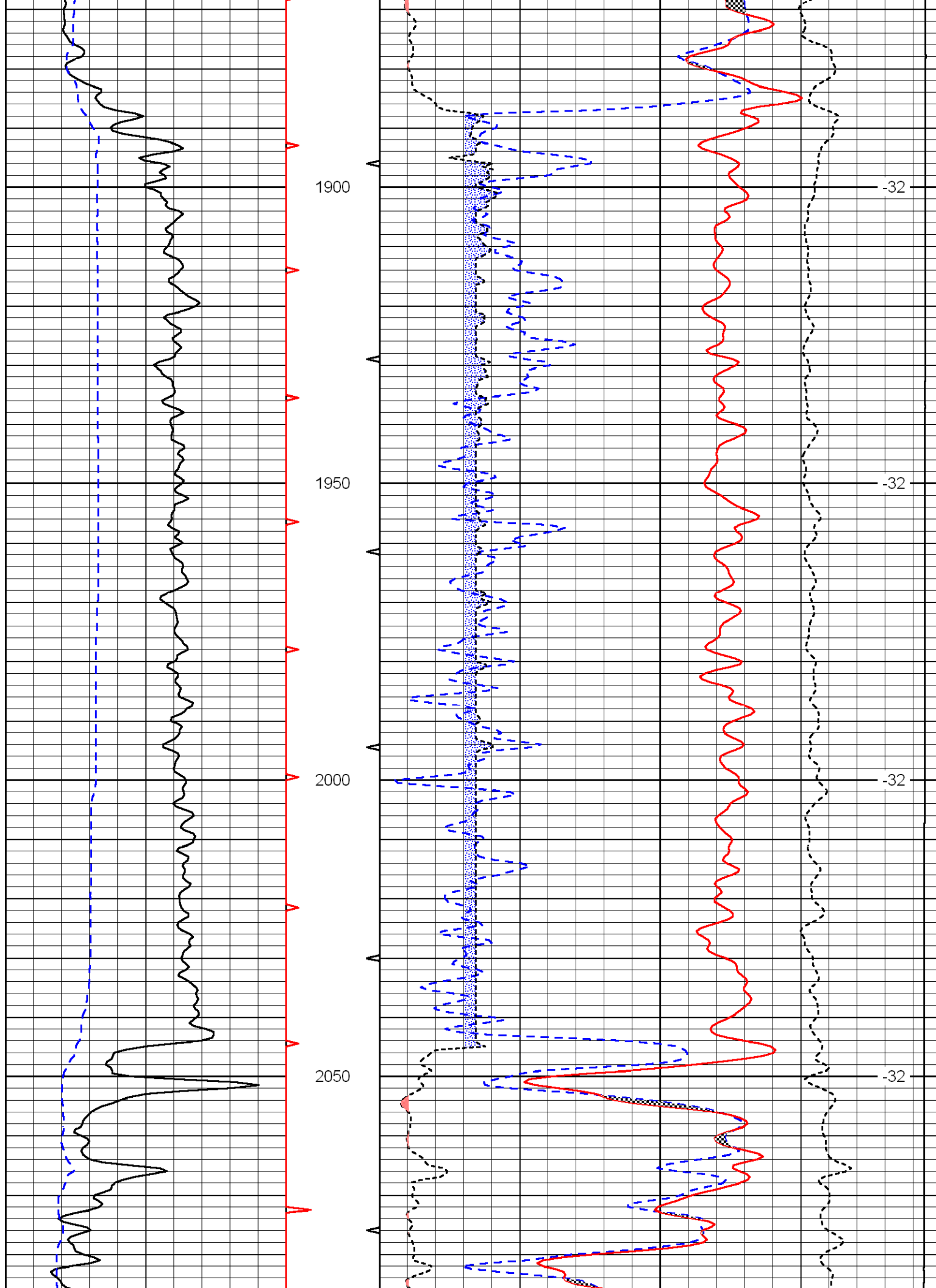


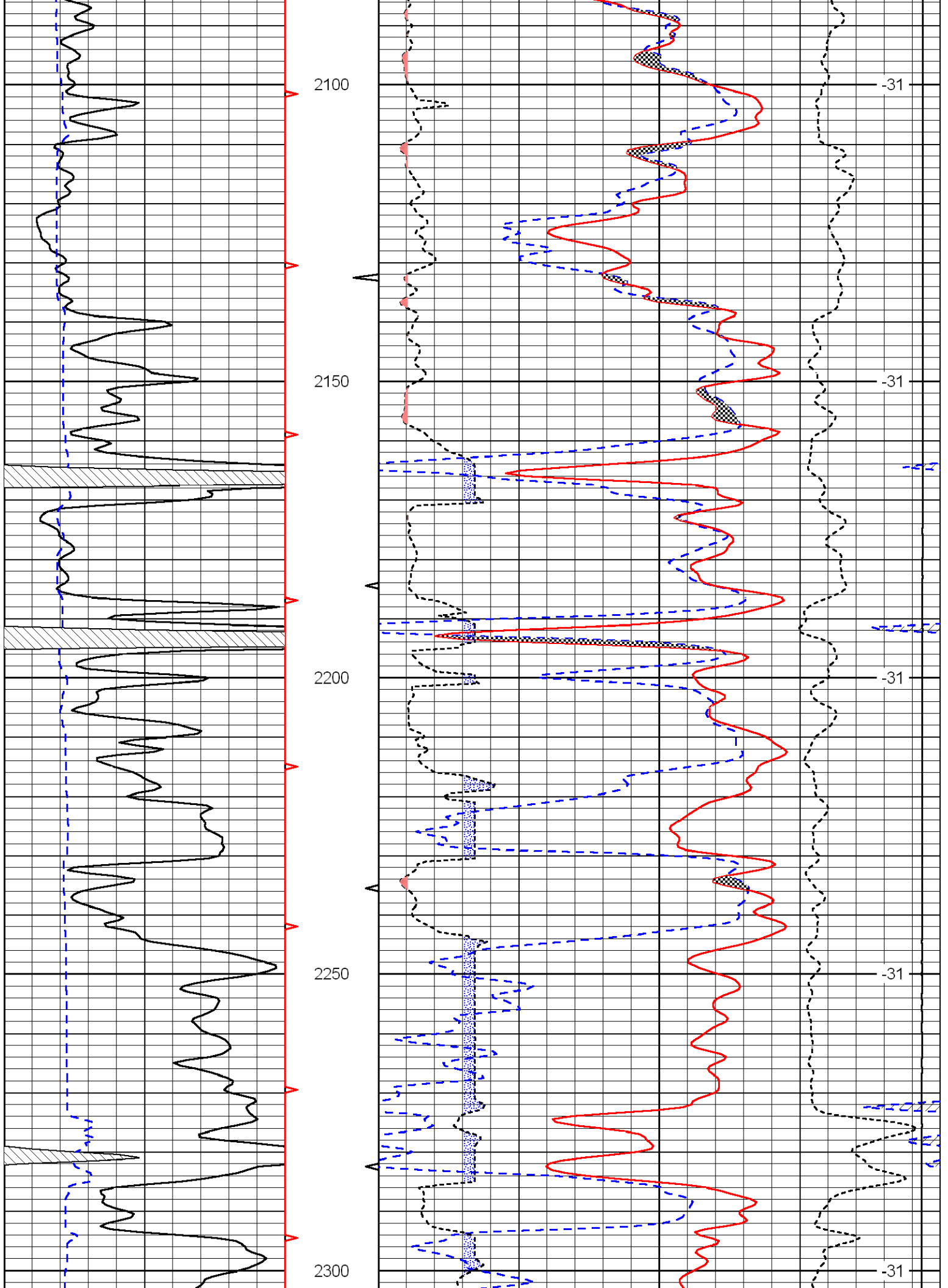


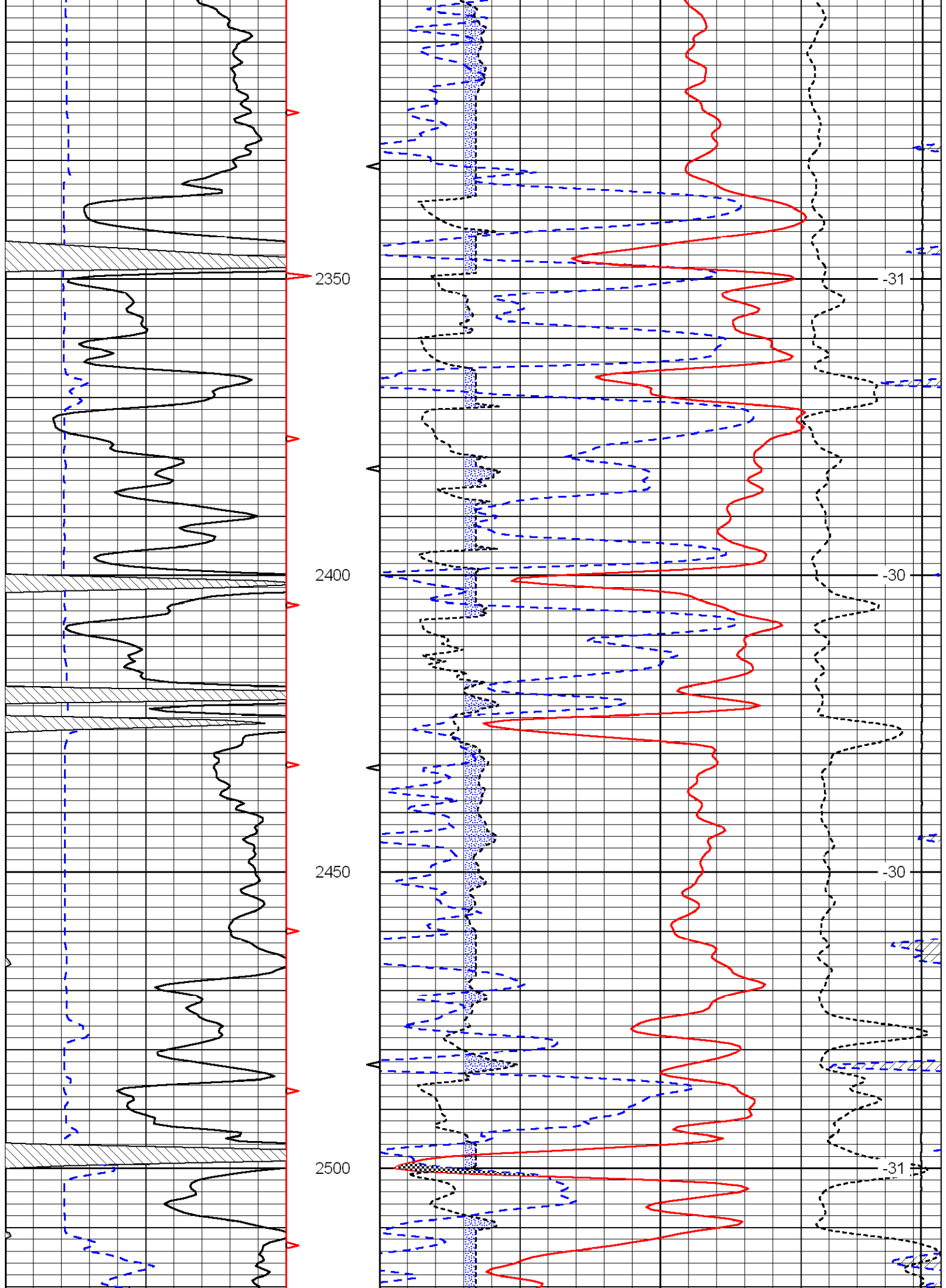


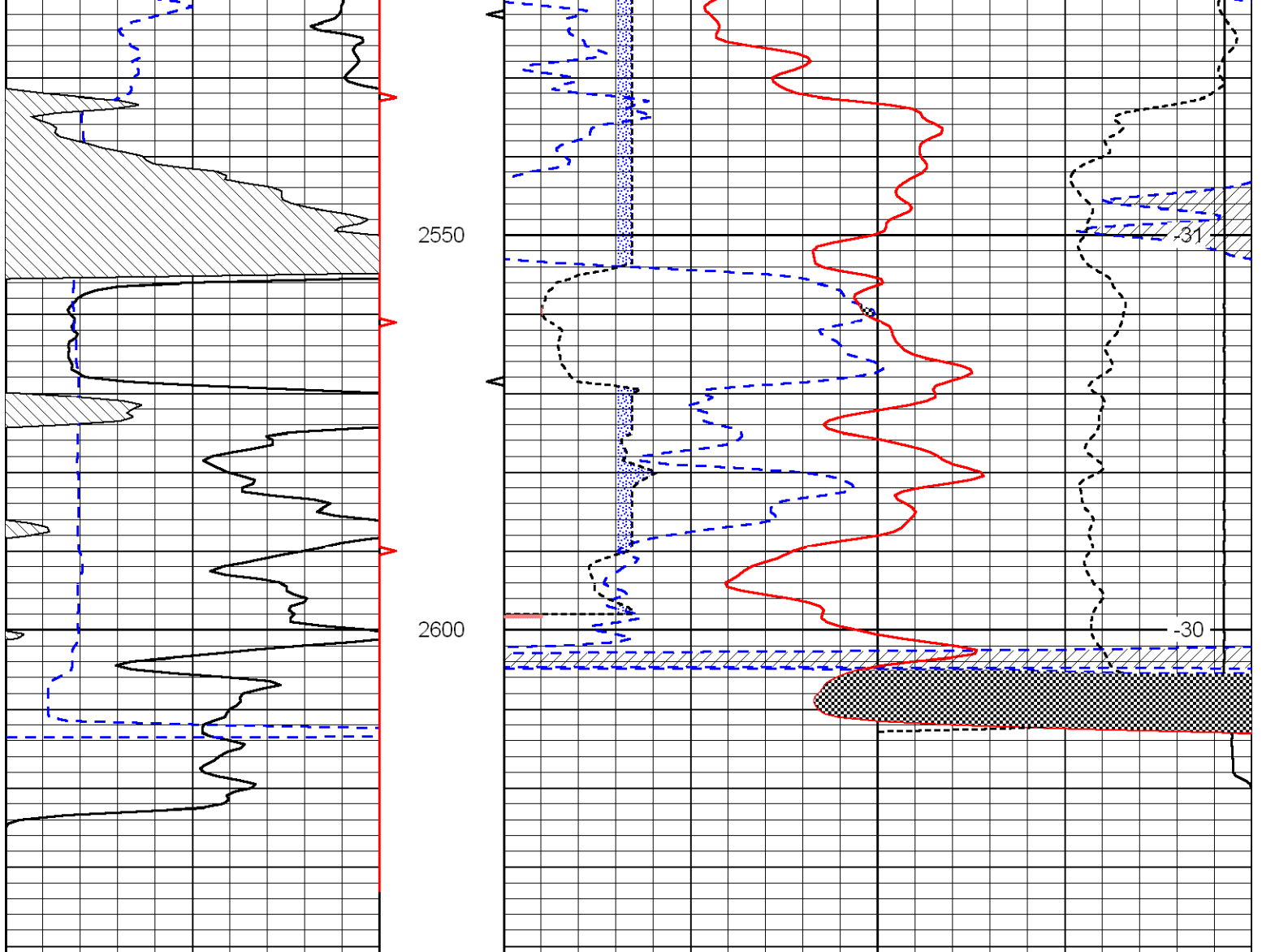












0	Gamma Ray	150
6	Caliper (in)	16

30	Compensated Neutron (Limestone) (pu)		-10
30	Compensated Density (2.71 ma) (pu)		-10
2.625	DGA (g/cc)	3.425	-0.25
		Correction (g/cc)	0.25
15000	Line Tension (lb)		0

LSPD
(ft/min)