



Microresistivity Log

DIGITAL LOG (785) 625-3858

API No.	15-015-23,826-00-00		
Company	Vess Oil Corporation		
Well	Skaer A No. 23		
Field	Augusta		
County	Butler	State	Kansas
Location	1047' FNL & 1593' FEL		
Sec: 35	Twp: 27S	Rge: 4E	
Permanent Datum	Ground Level	Elevation	1292
Log Measured From	Kelly Bushing	9 Ft. Above Perm. Datum	
Drilling Measured From	Kelly Bushing		
		Other Services	CNL/CDL DIL
		Elevation	K.B. 1301 D.F. 1292 G.L. 1292

Date	08/04/2009	
Run Number	Two	
Depth Driller	2608	
Depth Logger	2610	
Bottom Logged Interval	2609	
Top Log Interval	1400	
Casing Driller	8.625 @ 260	
Casing Logger	259	
Bit Size	7.875	
Type Fluid in Hole	Chemical	
Salinity, ppm CL	1.900	
Density / Viscosity	9.4	45
pH / Fluid Loss	8.0	9.2
Source of Sample	Flowline	
Rm @ Meas. Temp	2.2 @ 80	
Rmf @ Meas. Temp	1.65 @ 80	
Rmc @ Meas. Temp	2.97 @ 80	
Source of Rmf / Rmc	Charts	
Rm @ BHT	1.69 @ 104	
Operating Rig Time	3 Hours	
Max Rec. Temp. F	104	
Equipment Number	10	
Location	Hays	
Recorded By	Jason Wellbrock	
Witnessed By	Roger Martin	

<<< Fold Here >>>

All interpretations are opinions based on inferences from electrical or other measurements and we cannot and do not guarantee the accuracy or correctness of any interpretation, and we shall not, except in the case of gross or willful negligence on our part, be liable or responsible for any loss, costs, damages, or expenses incurred or sustained by anyone resulting from any interpretation made by any of our officers, agents or employees. These interpretations are also subject to our general terms and conditions set out in our current Price Schedule.

Comments

Thank you for using Log-Tech, Inc.
(785) 625-3858

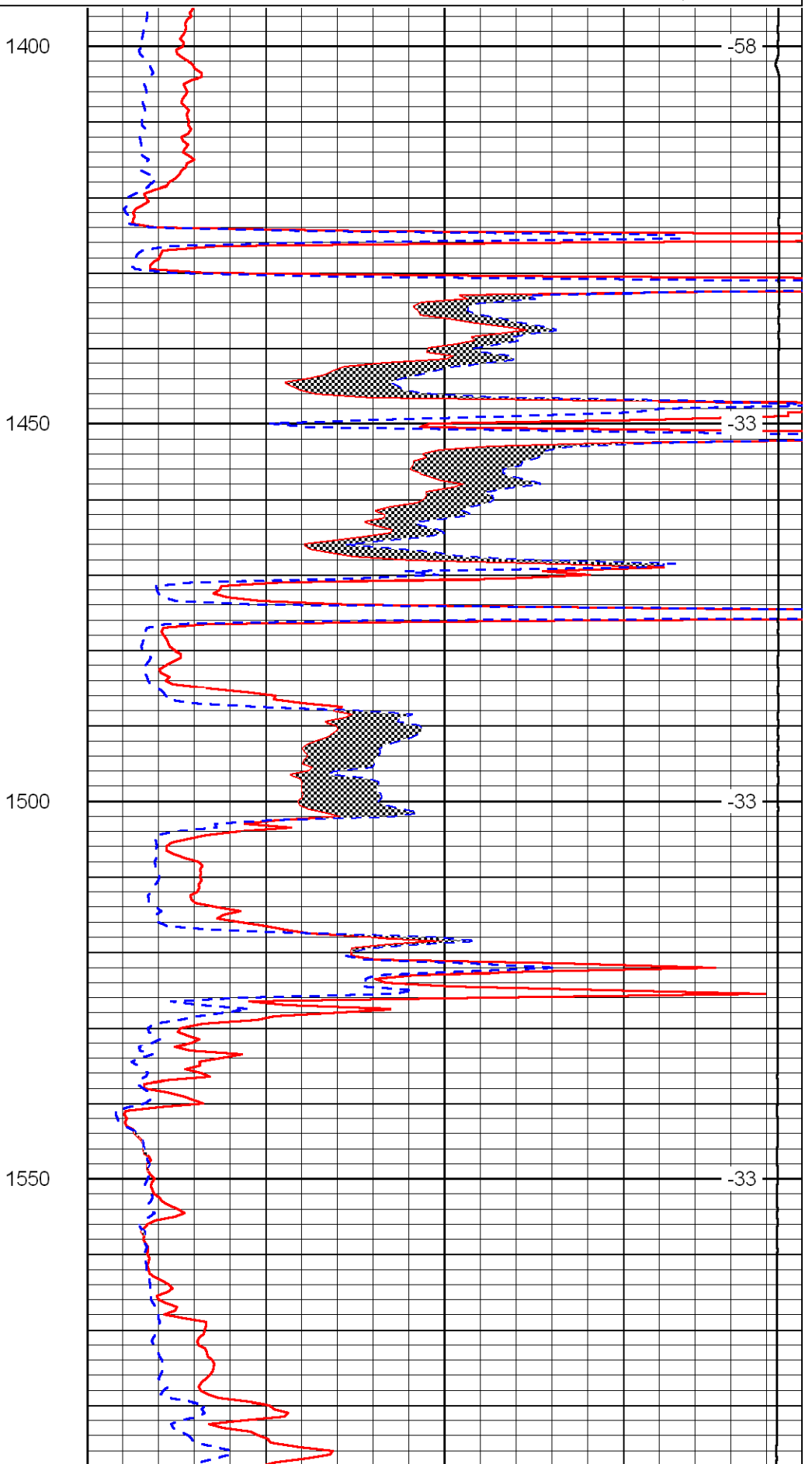
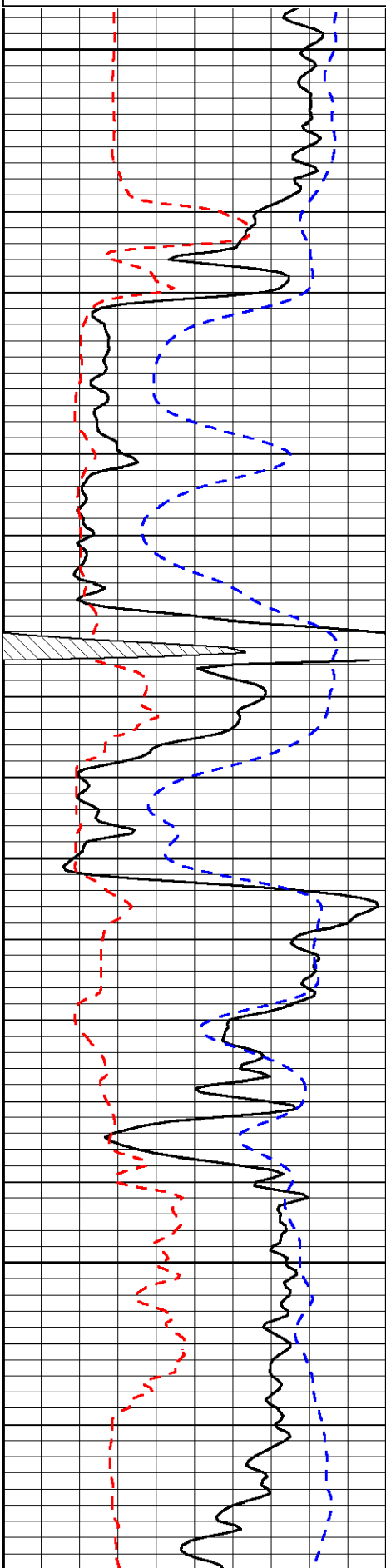
Augusta Edge of town to Industrial Park Go Left, 3/4 E, to rd shumway, 1 S to 110rd West Into threw red ga

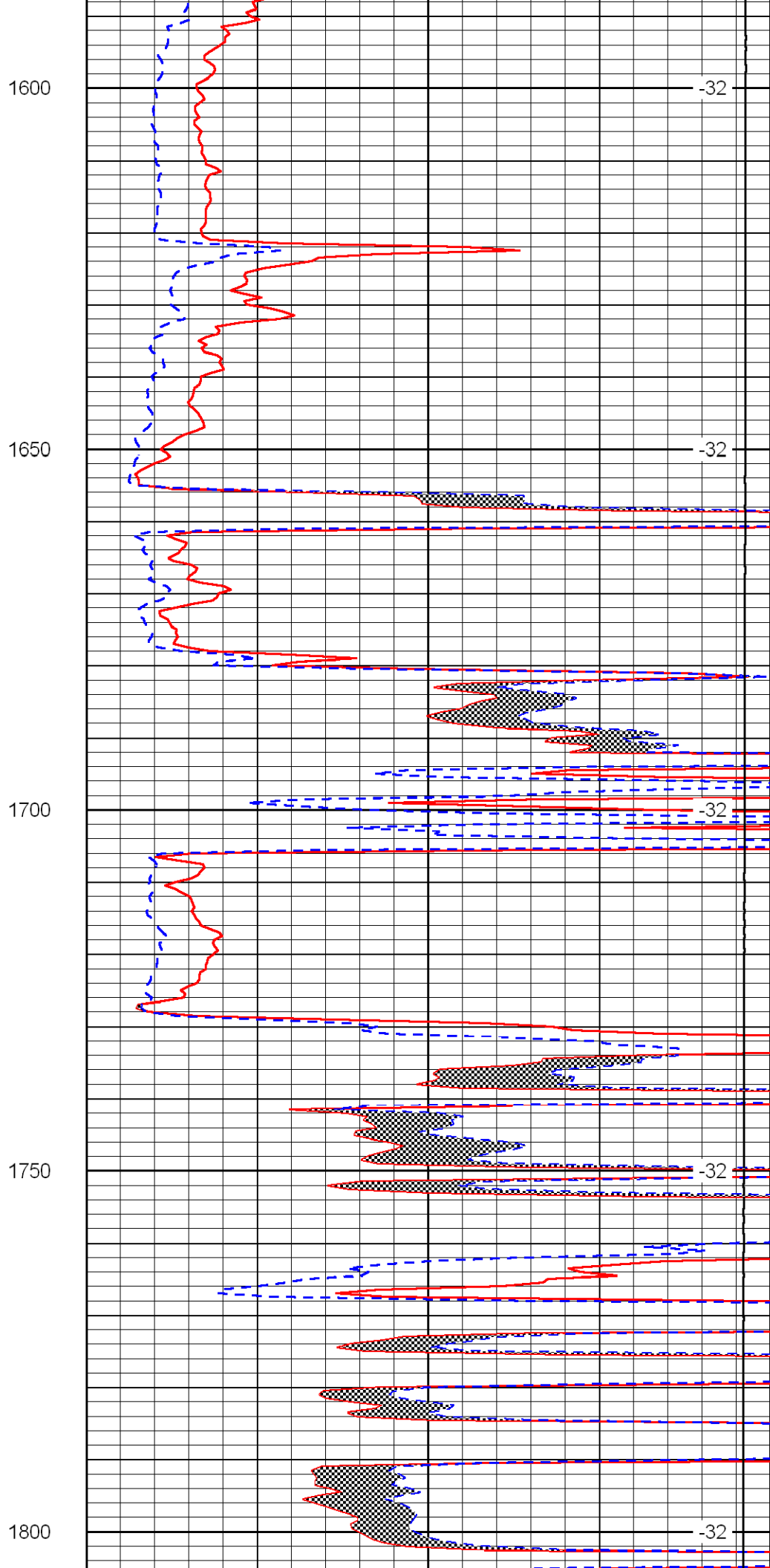
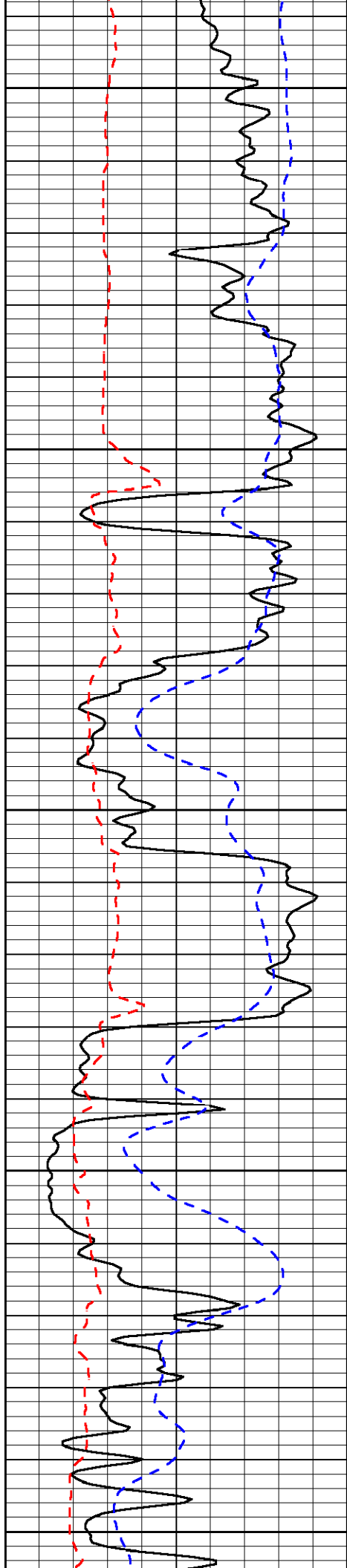
Database File: c:\warrior\data\vess_skaer a no. 23\vesshd.db
 Dataset Pathname: dil/vess
 Presentation Format: micro
 Dataset Creation: Tue Aug 04 04:53:38 2009
 Charted by: Depth in Feet scaled 1:240

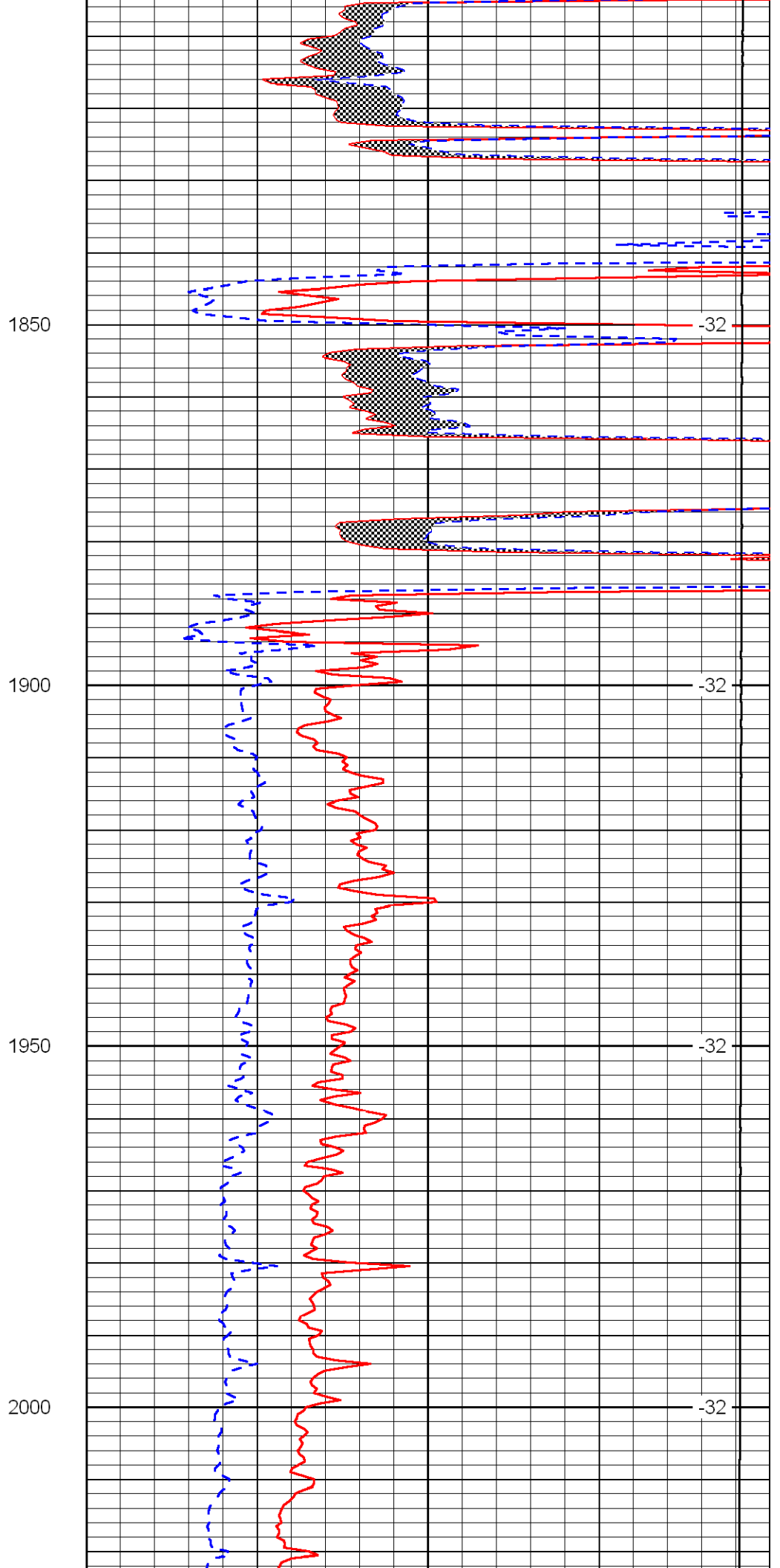
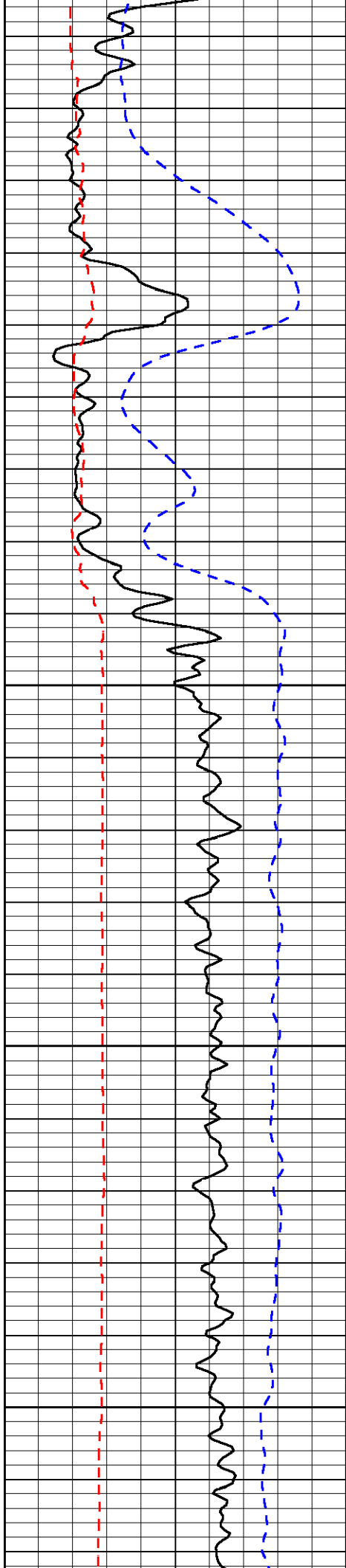
0	Gamma Ray	150
6	Micro Log Caliper (in)	16
-200	SP (MV)	0

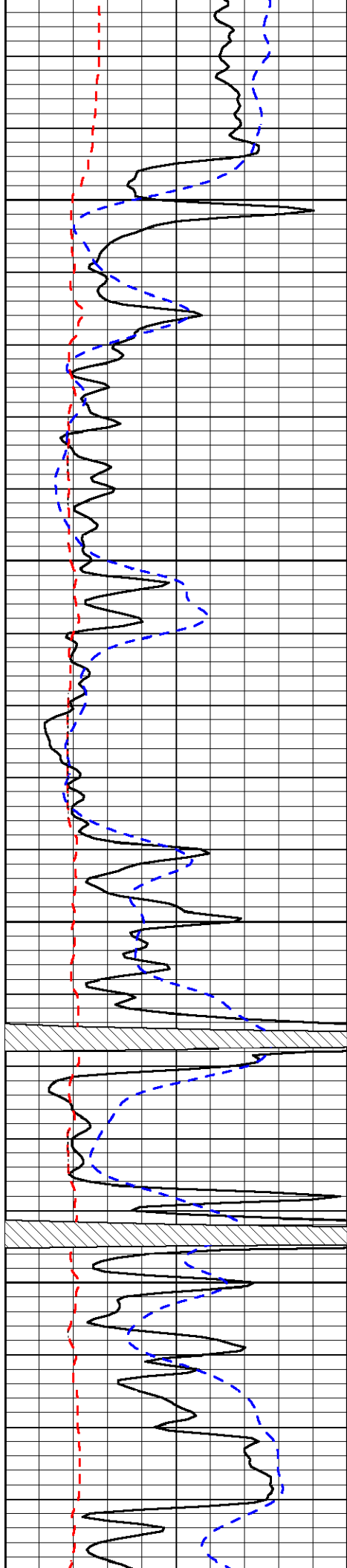
0	Micro Inverse 1 X 1 (Ohm-m)	40
0	Micro Normal 2" (Ohm-m)	40
10000	Line Weight (lb)	0

LSPD
(ft/min)







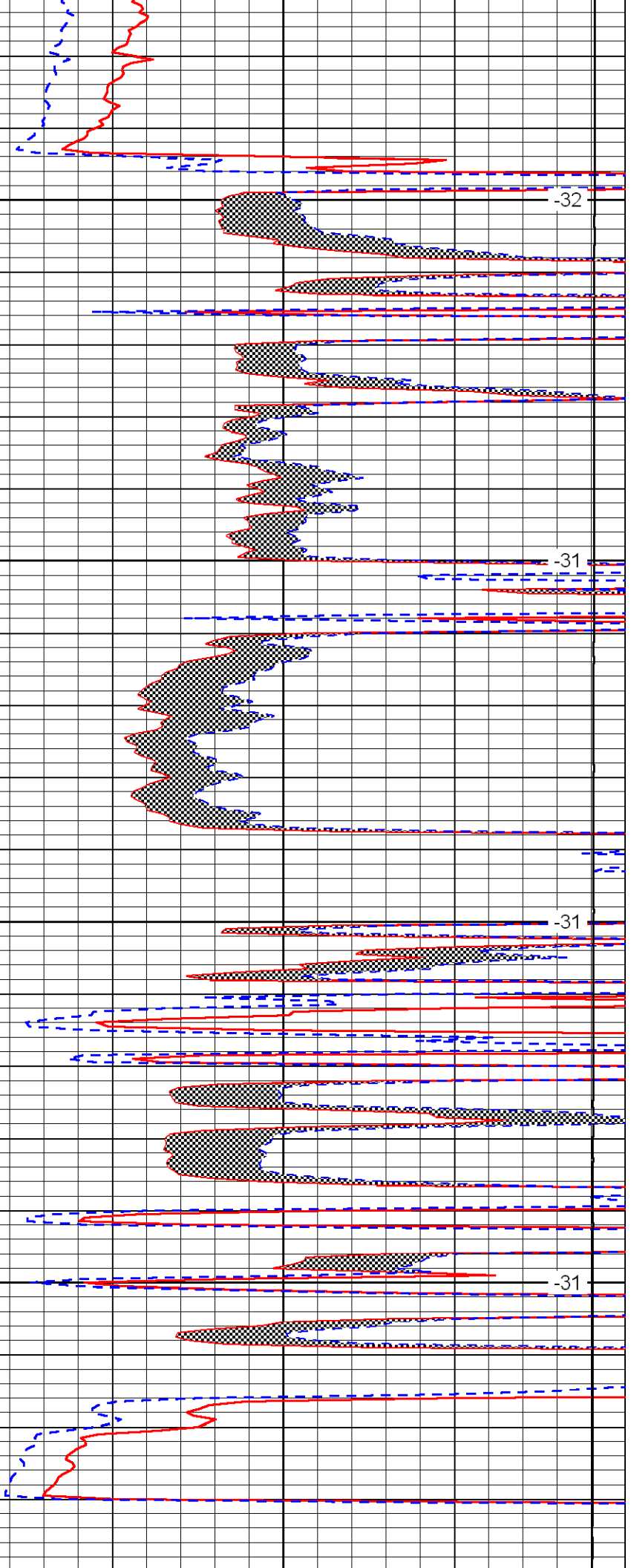


2050

2100

2150

2200

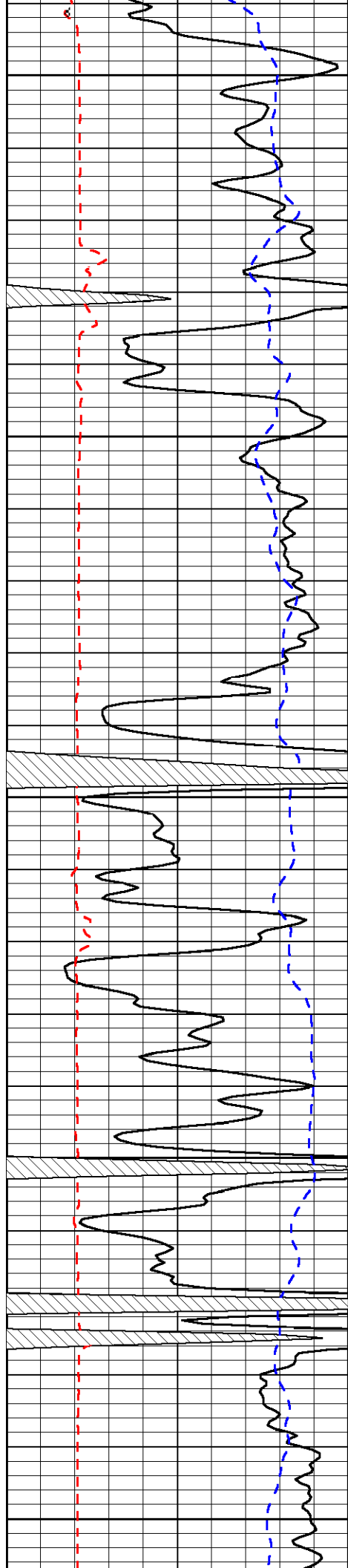


-32

-31

-31

-31



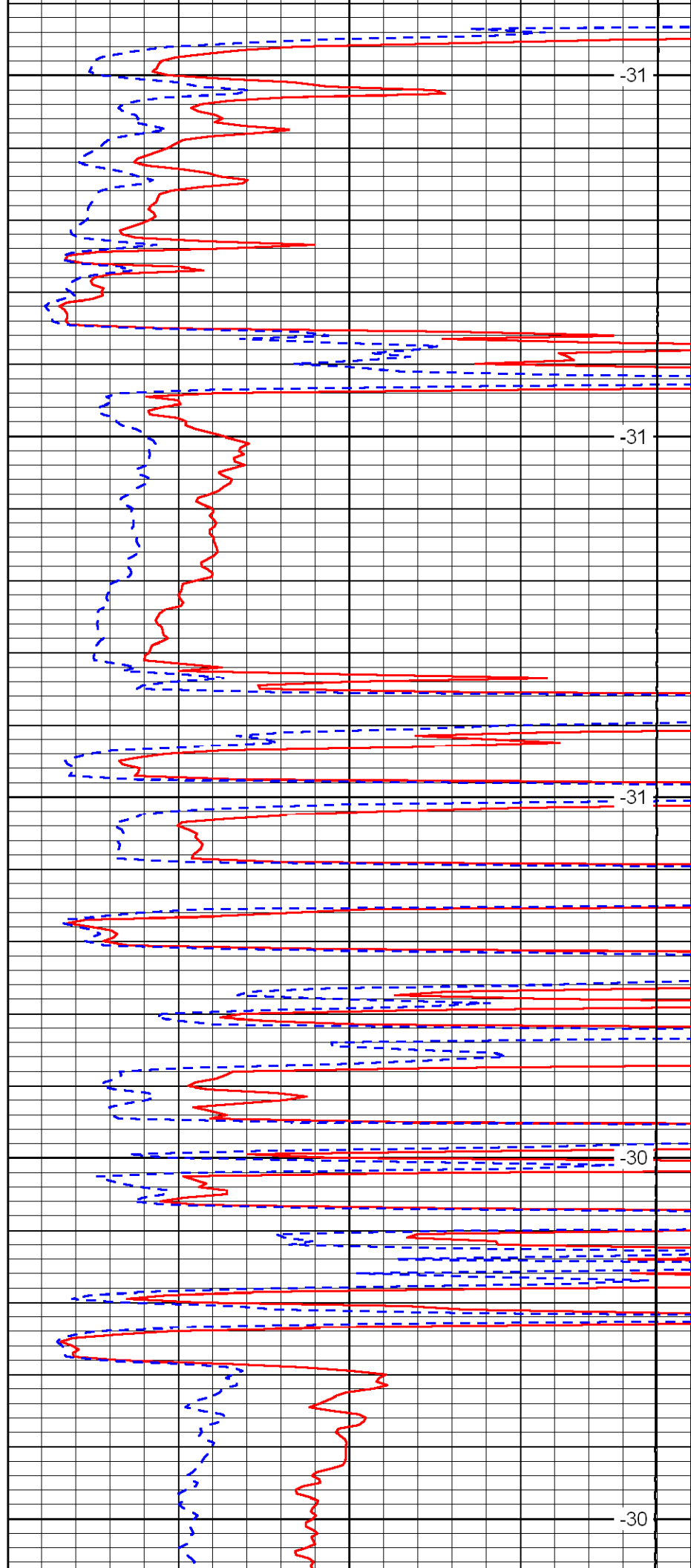
2250

2300

2350

2400

2450



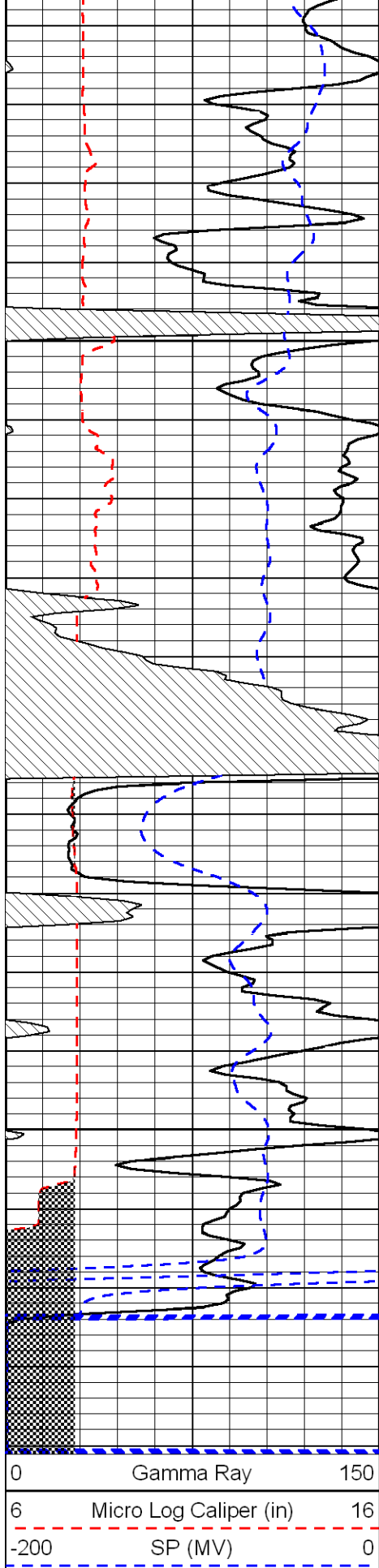
-31

-31

-31

-30

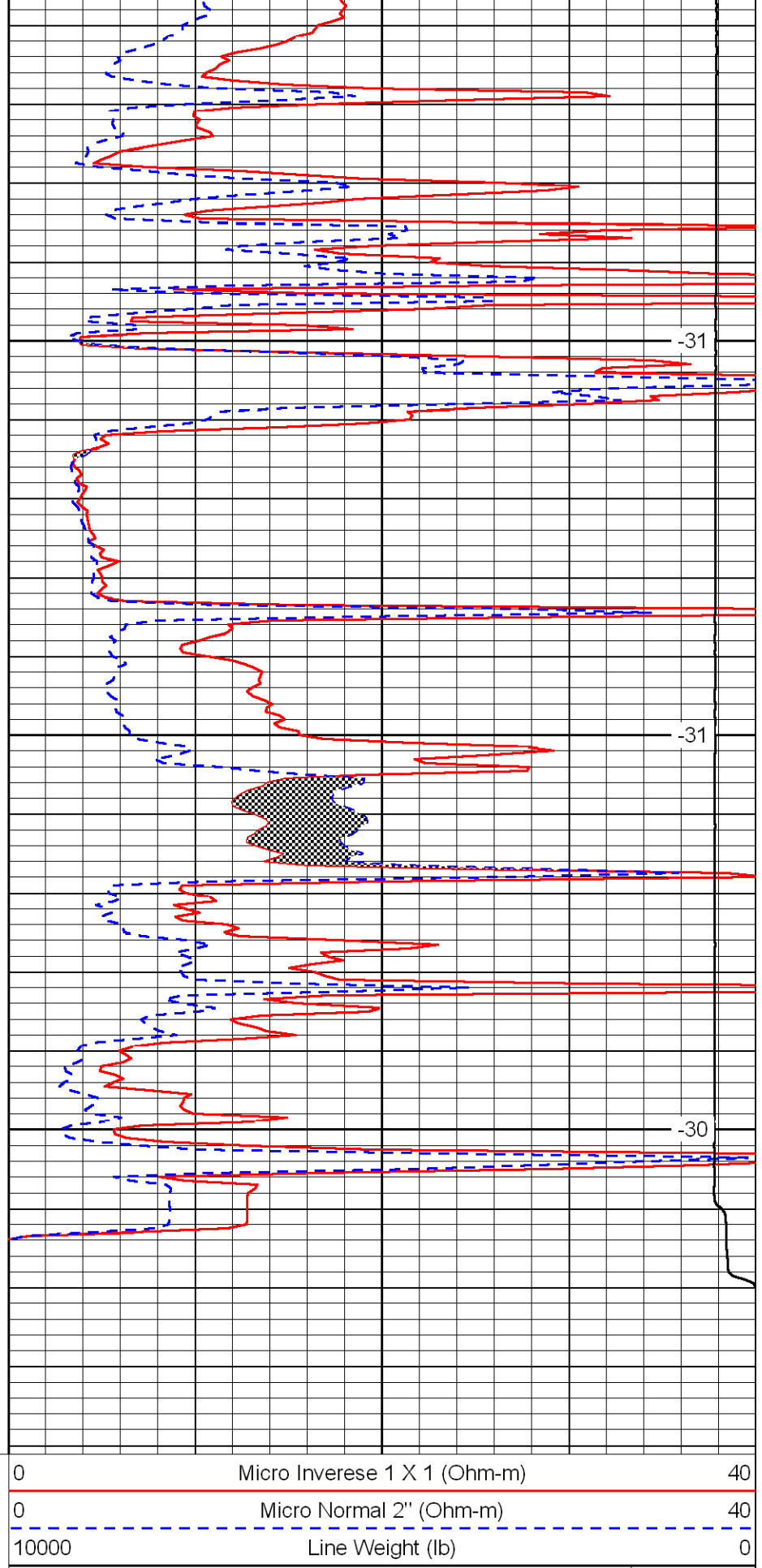
-30



2500

2550

2600



-31

-31

-30

LSPD
(ft/min)