



Dual Induction Log

DIGITAL LOG (785) 625-3858

| | | | |
|------------------------|-----------------------|-------------------------|----------------------------------|
| API No. | 15-015-23,826-00-00 | | |
| Company | Vess Oil Corporation | | |
| Well | Skaer A No. 23 | | |
| Field | Augusta | | |
| County | Butler | State | Kansas |
| Location | 1047' FNL & 1593' FEL | | |
| Sec: 35 | Twp: 27S | Rge: 4E | Other Services CNL/CDL MEL |
| Permanent Datum | Ground Level | Elevation 1292 | Elevation |
| Log Measured From | Kelly Bushing | 9 Ft. Above Perm. Datum | K.B. 1301 |
| Drilling Measured From | Kelly Bushing | | D.F. 1292 |

| | | |
|------------------------|-----------------|-----|
| Date | 08/04/2009 | |
| Run Number | One | |
| Depth Driller | 2608 | |
| Depth Logger | 2610 | |
| Bottom Logged Interval | 2609 | |
| Top Log Interval | 250 | |
| Casing Driller | 8.625 @ 260 | |
| Casing Logger | 259 | |
| Bit Size | 7.875 | |
| Type Fluid in Hole | Chemical | |
| Salinity, ppm CL | 1.900 | |
| Density / Viscosity | 9.4 | 45 |
| pH / Fluid Loss | 8.0 | 9.2 |
| Source of Sample | Flowline | |
| Rm @ Meas. Temp | 2.2 @ 80 | |
| Rmf @ Meas. Temp | 1.65 @ 80 | |
| Rmc @ Meas. Temp | 2.97 @ 80 | |
| Source of Rmf / Rmc | Charts | |
| Rm @ BHT | 1.69 @ 104 | |
| Operating Rig Time | 3 Hours | |
| Max Rec. Temp. F | 104 | |
| Equipment Number | 10 | |
| Location | Hays | |
| Recorded By | Jason Wellbrock | |
| Witnessed By | Roger Martin | |

<<< Fold Here >>>

All interpretations are opinions based on inferences from electrical or other measurements and we cannot and do not guarantee the accuracy or correctness of any interpretation, and we shall not, except in the case of gross or willful negligence on our part, be liable or responsible for any loss, costs, damages, or expenses incurred or sustained by anyone resulting from any interpretation made by any of our officers, agents or employees. These interpretations are also subject to our general terms and conditions set out in our current Price Schedule.

Comments

Thank you for using Log-Tech, Inc.
(785) 625-3858

Augusta Edge of town to Industrial Park Go Left, 3/4 E, to rd shumway, 1 S to 110rd West Into threw red ga

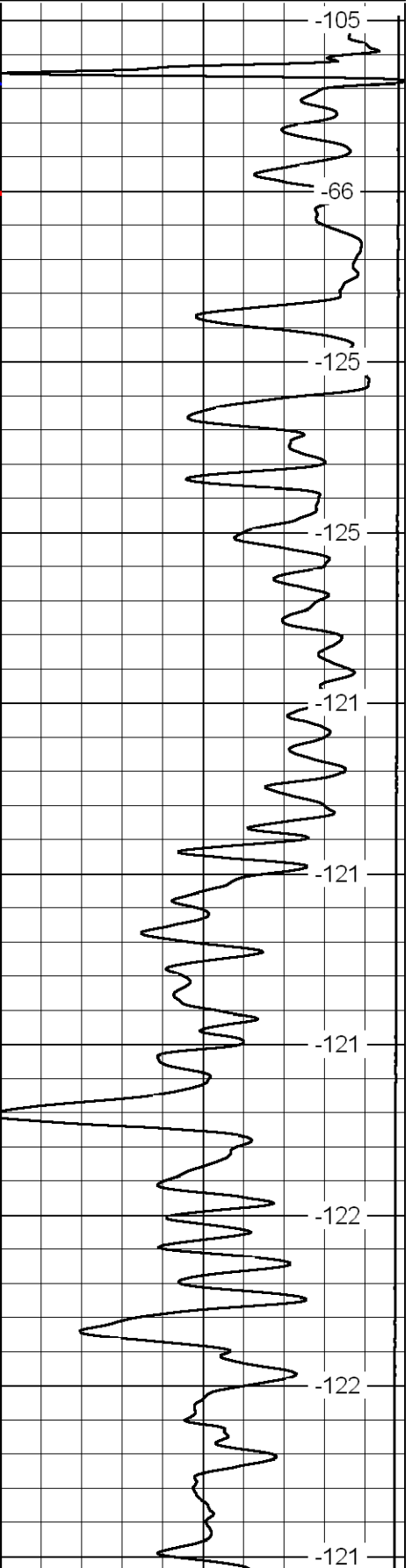
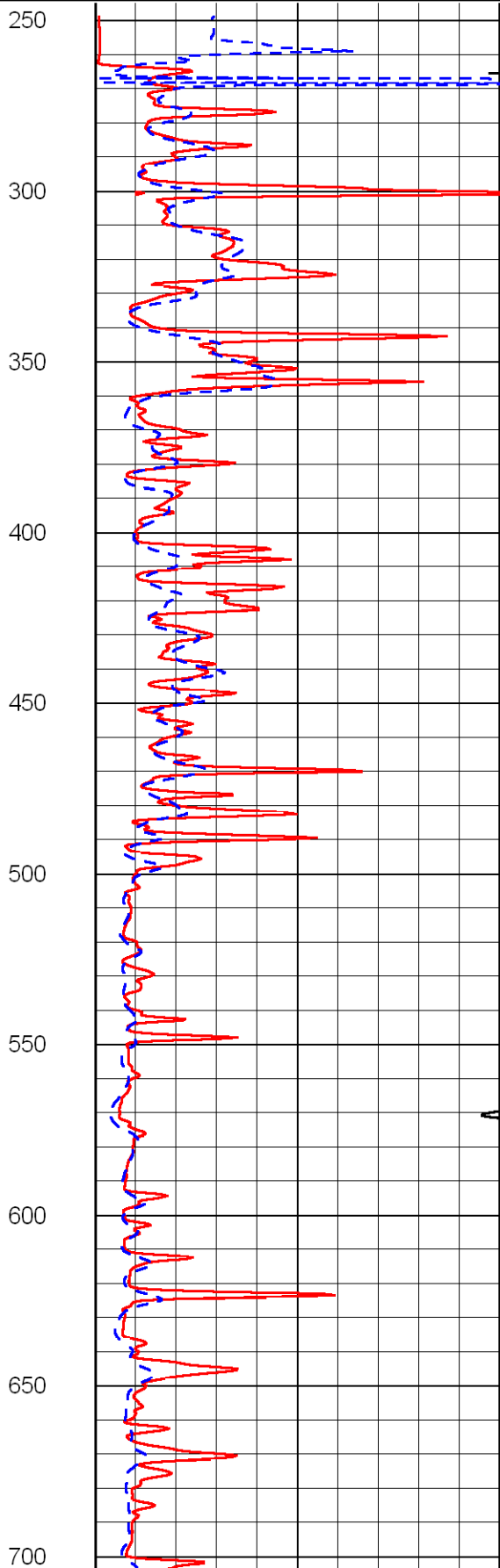
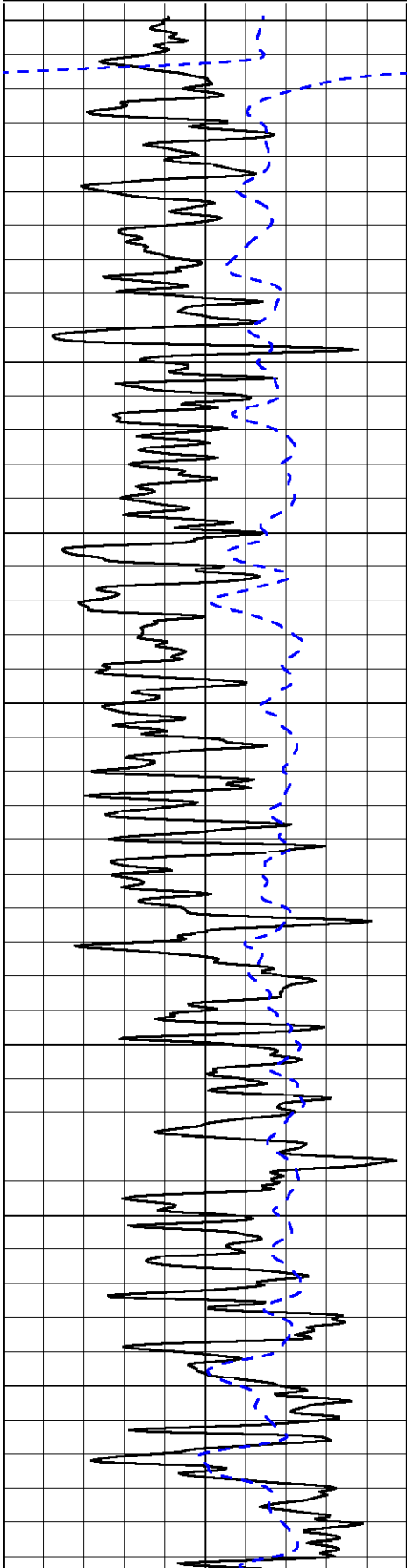
Database File: c:\warrior\data\vess_skaer a no. 23\vesshd.db
 Dataset Pathname: dil/vess
 Presentation Format: dil2in
 Dataset Creation: Tue Aug 04 04:53:38 2009
 Charted by: Depth in Feet scaled 1:600

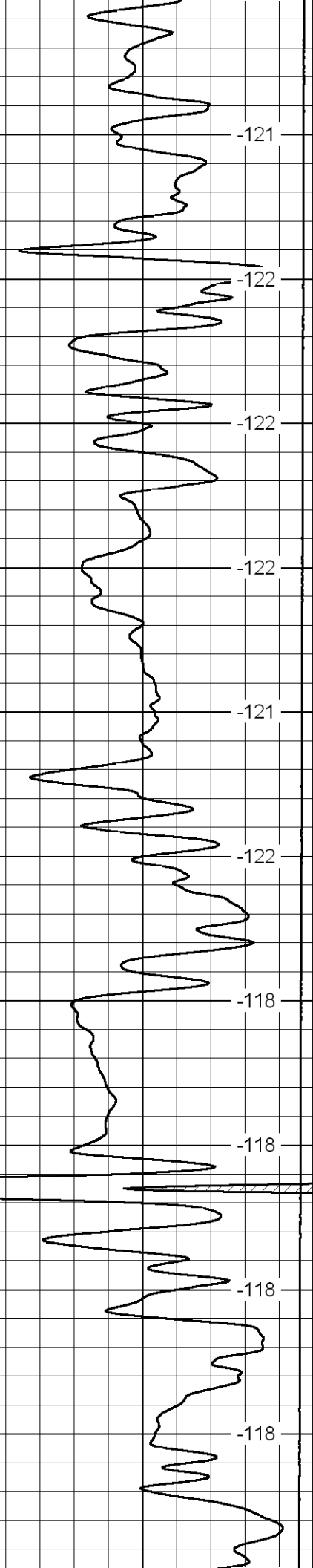
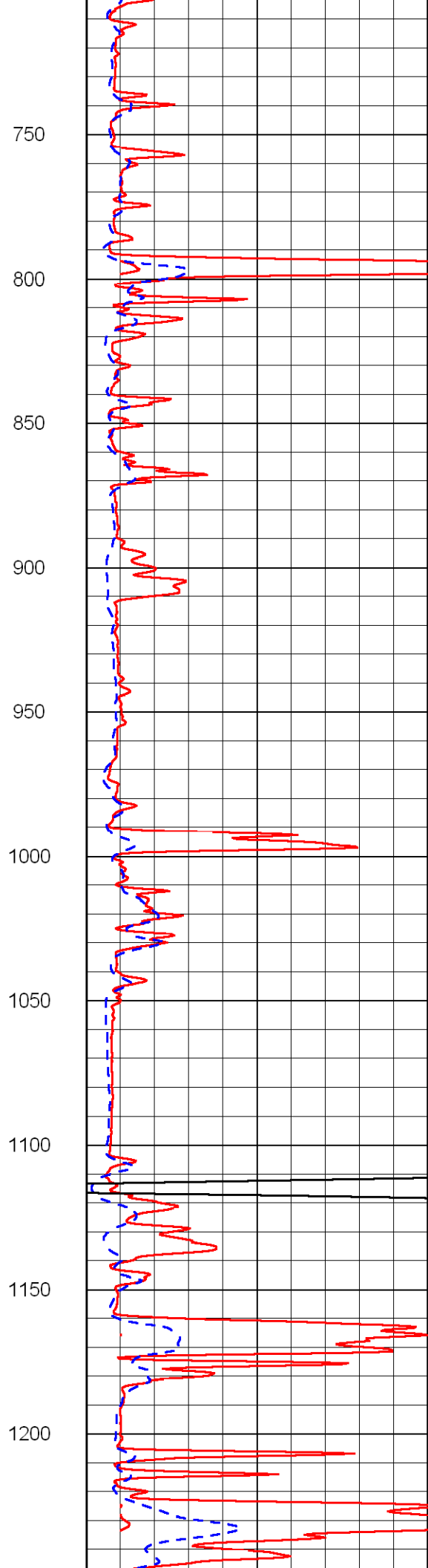
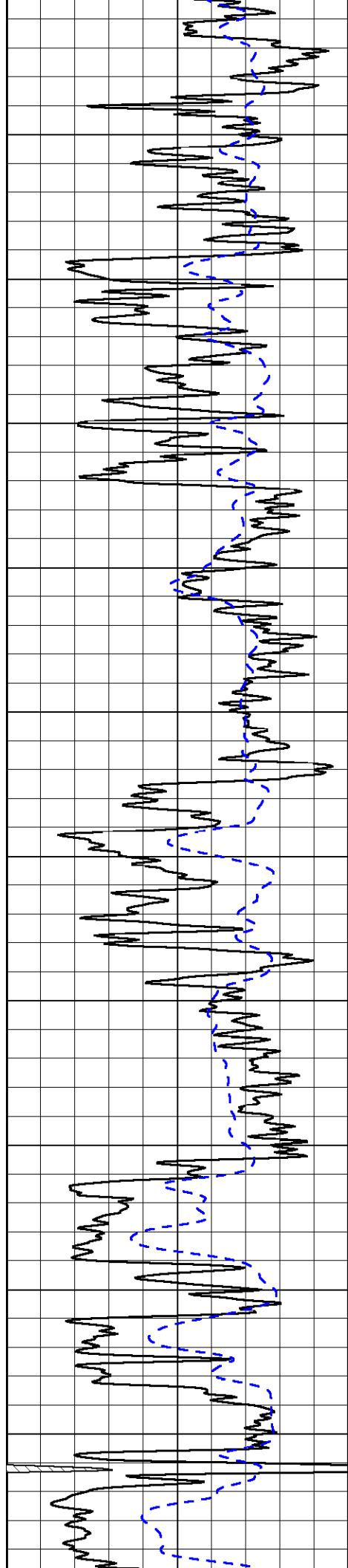
0 Gamma Ray 150
-200 SP (MV) 0

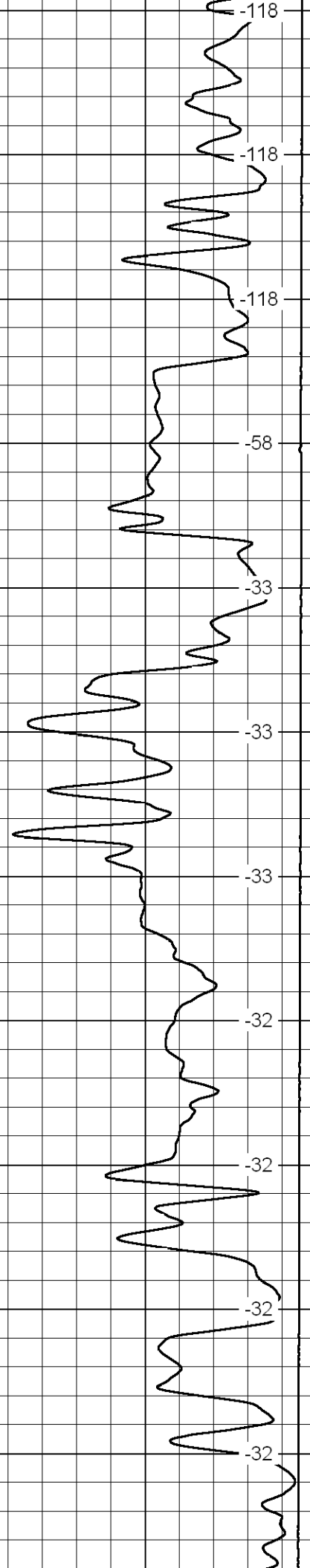
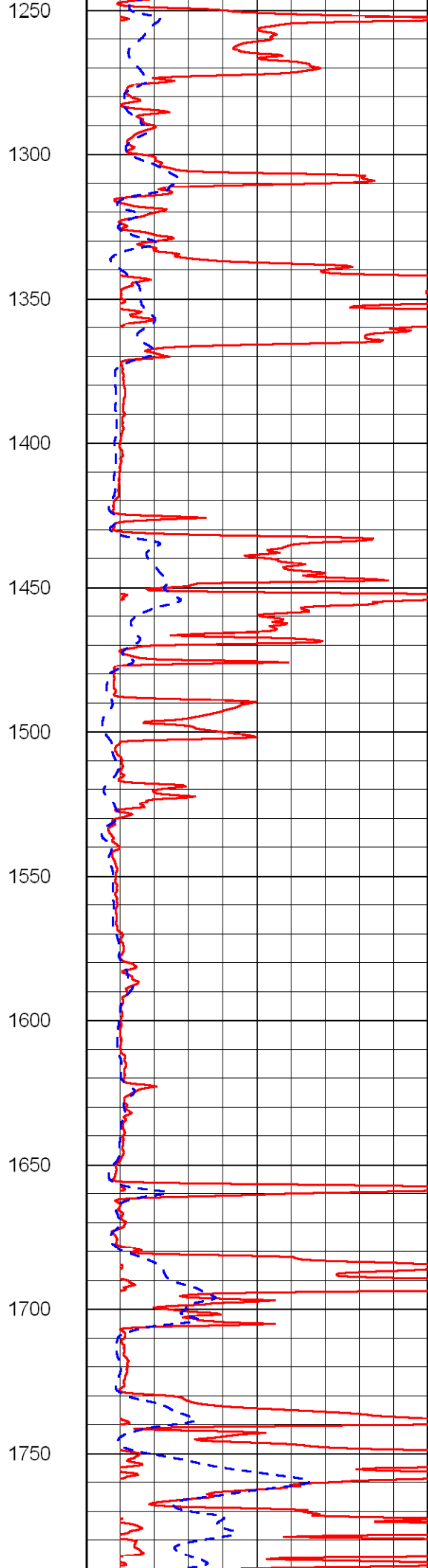
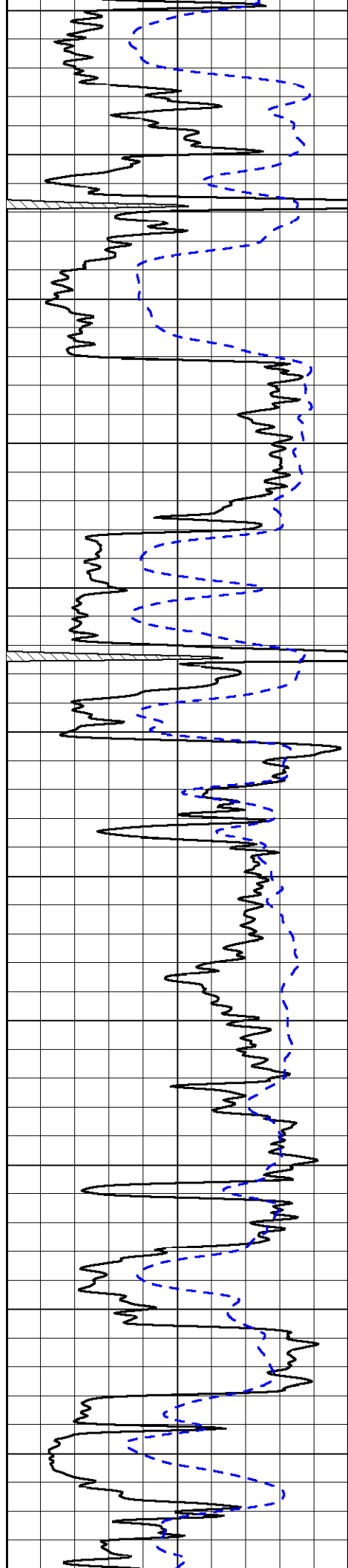
0 Shallow Resistivity (Ohm-m) 50
0 Deep Resistivity (Ohm-m) 50
1000 Conductivity (mmho/m) 0
15000 Line Tension (lb) 0

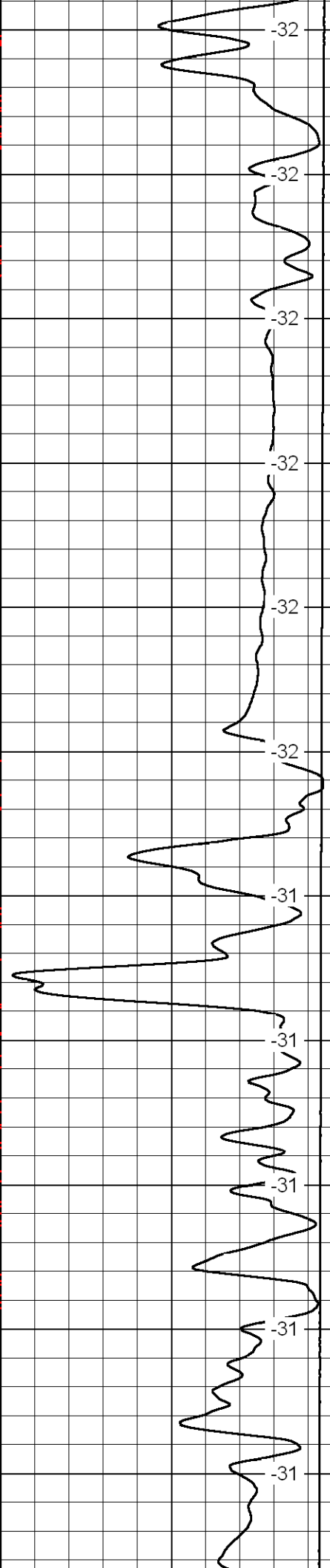
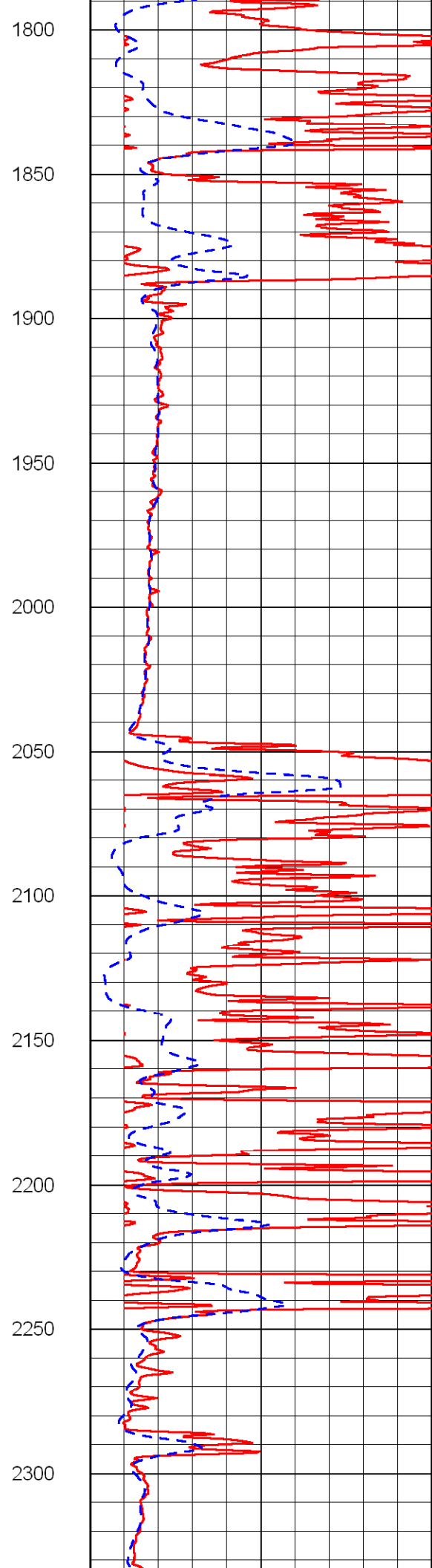
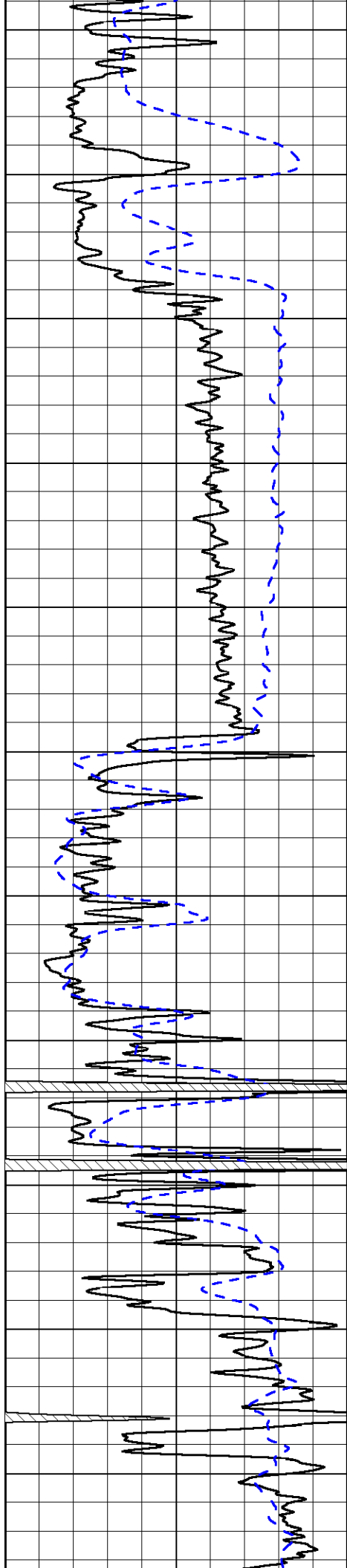
LSPD
(ft/min)
0

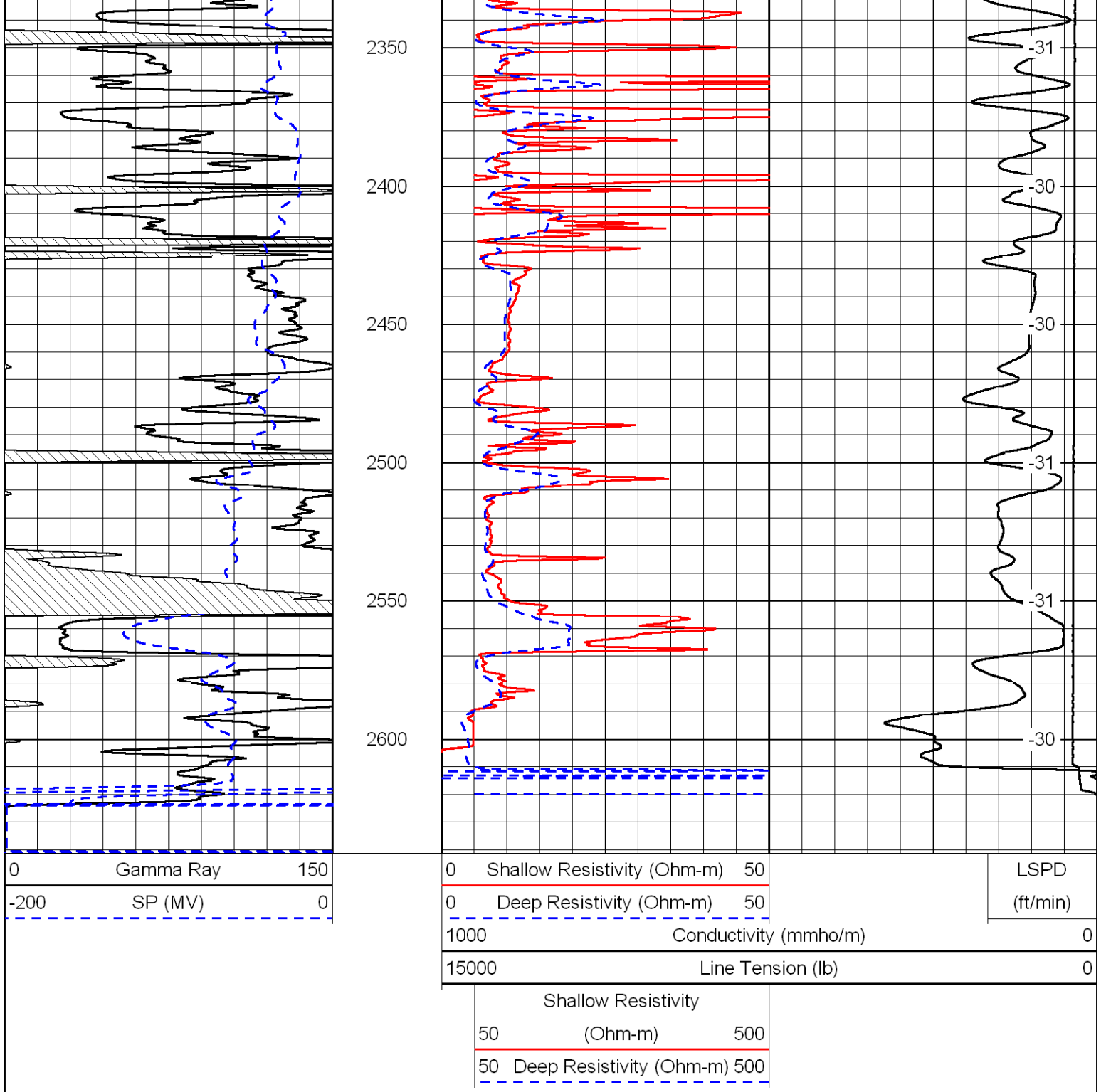
Shallow Resistivity
50 (Ohm-m) 500
50 Deep Resistivity (Ohm-m) 500



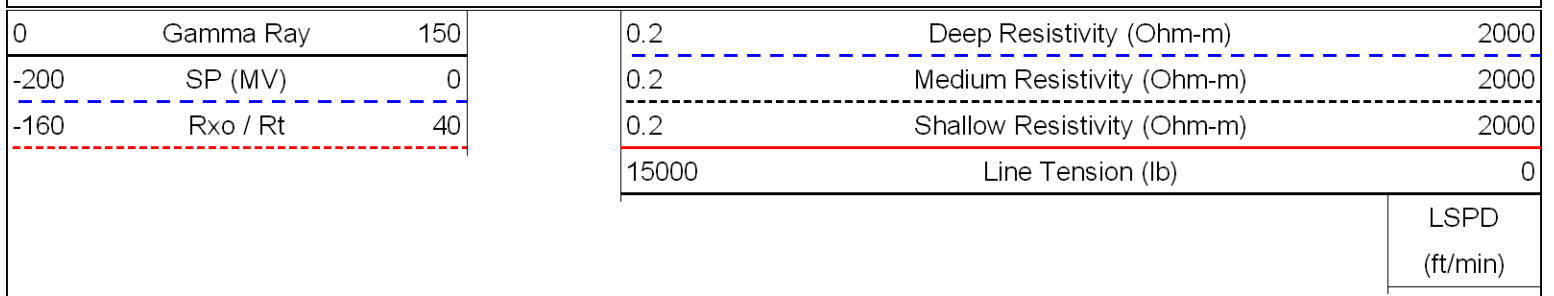


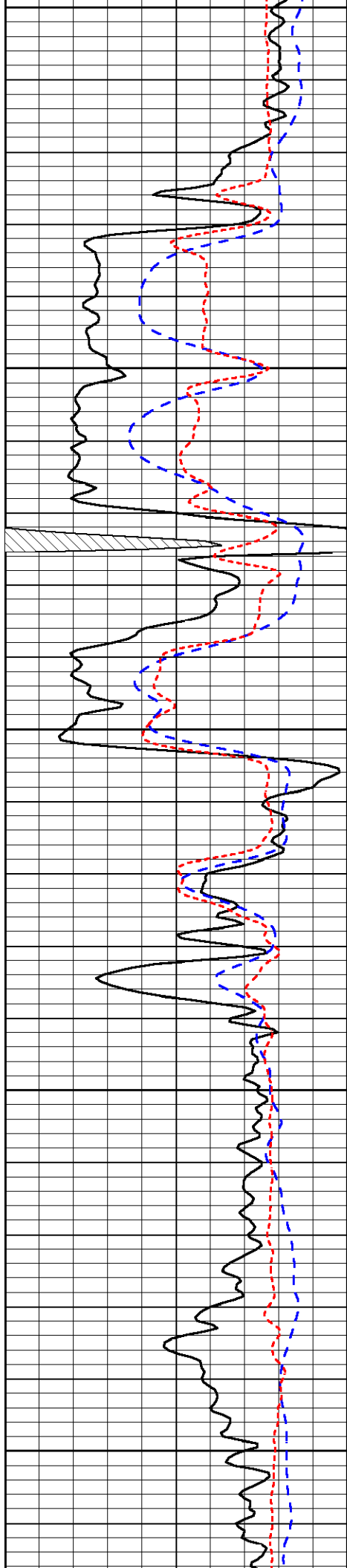






Database File: c:\warrior\data\vess_skaer a no. 23\vesshd.db
 Dataset Pathname: dil/vess
 Presentation Format: dil
 Dataset Creation: Tue Aug 04 04:53:38 2009
 Charted by: Depth in Feet scaled 1:240





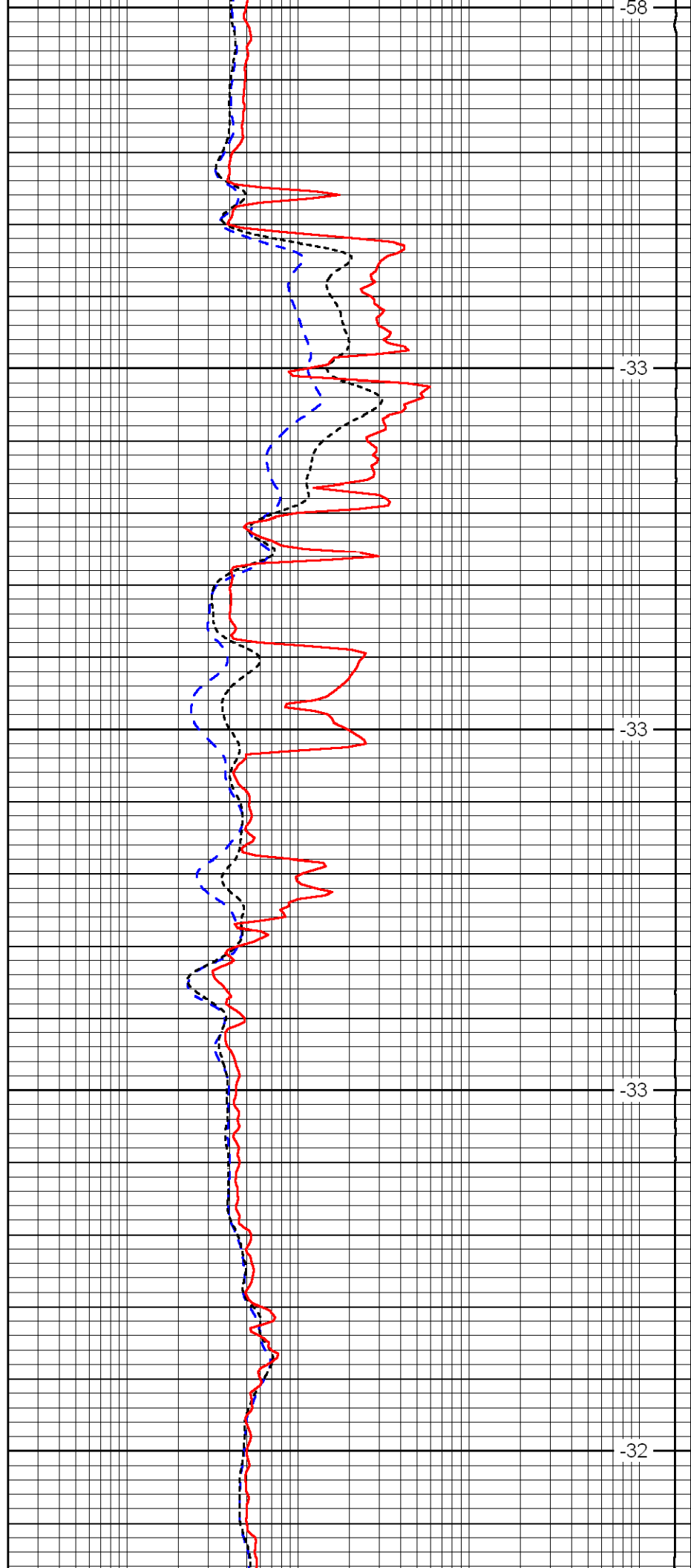
1400

1450

1500

1550

1600



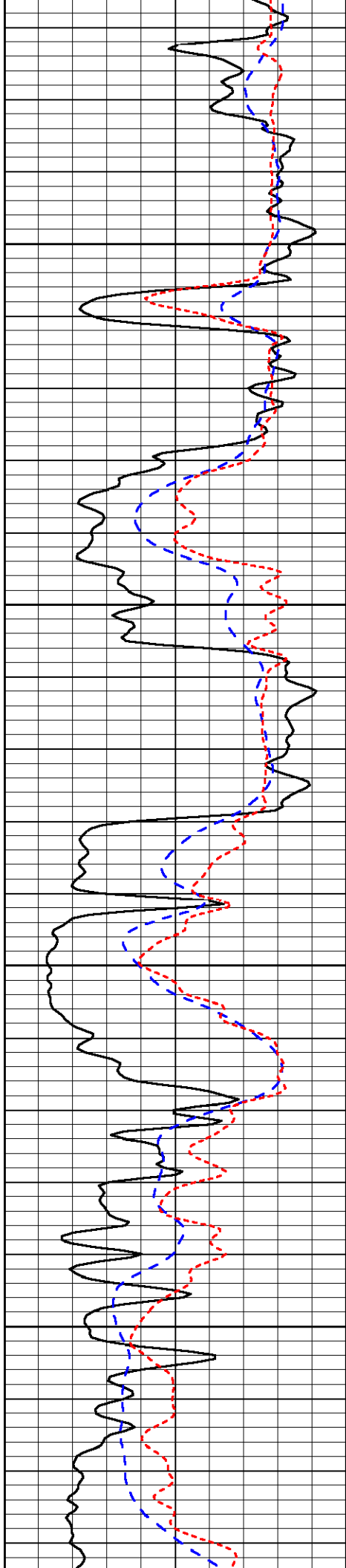
-58

-33

-33

-33

-32

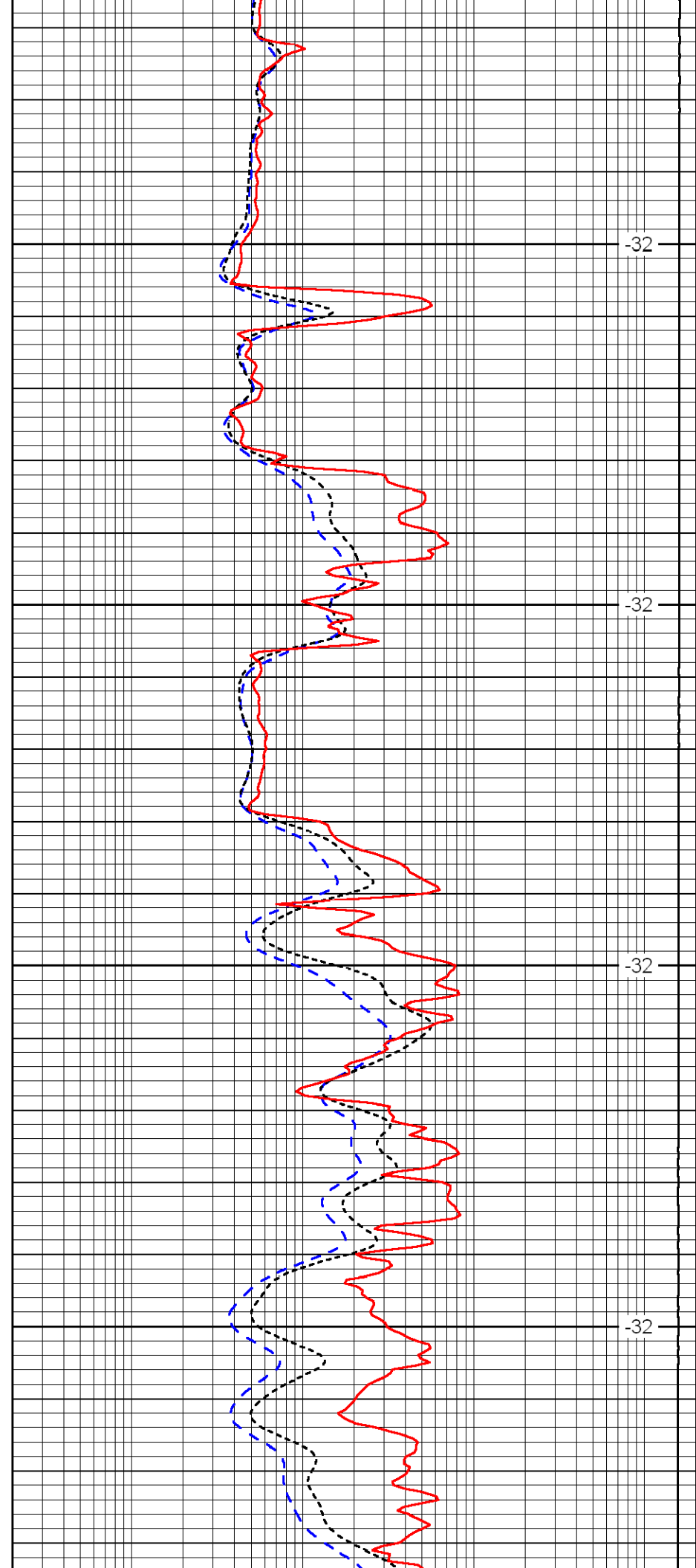


1650

1700

1750

1800

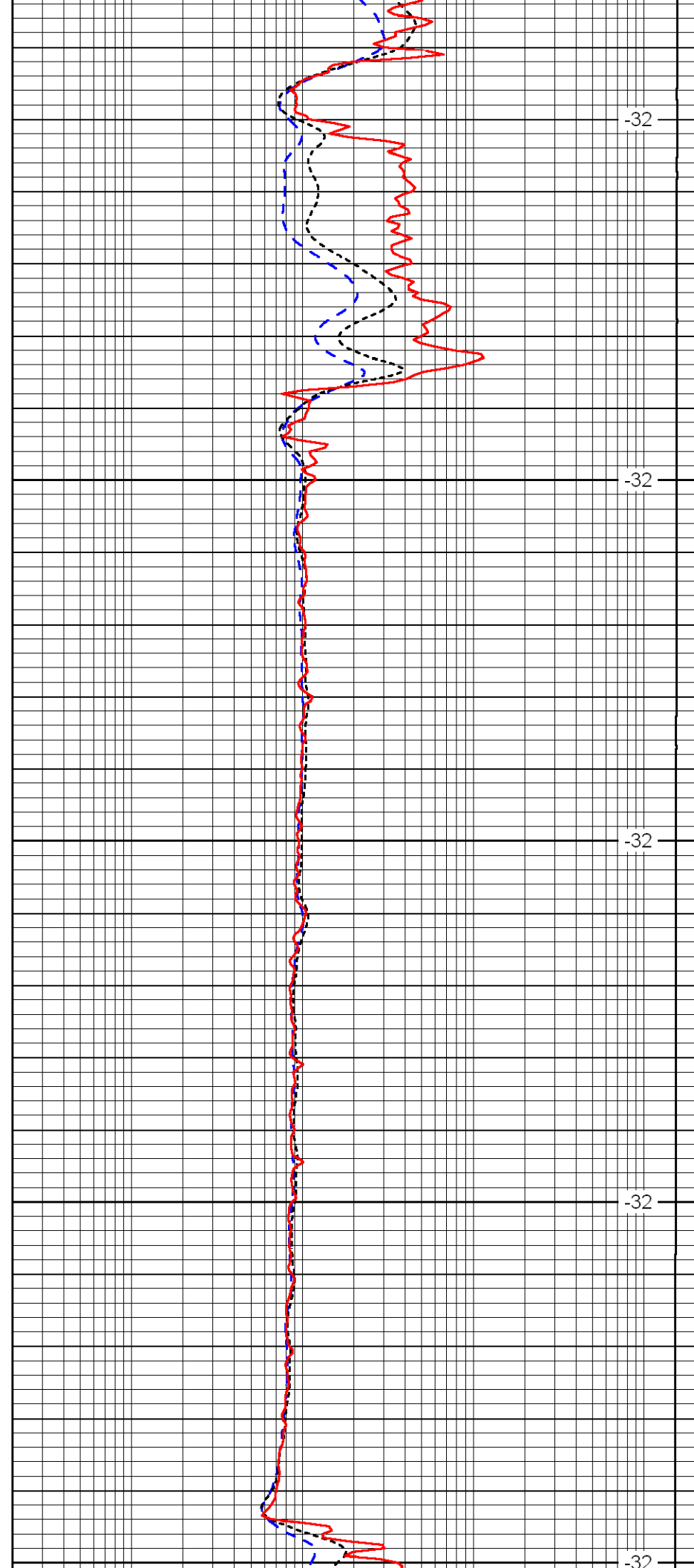
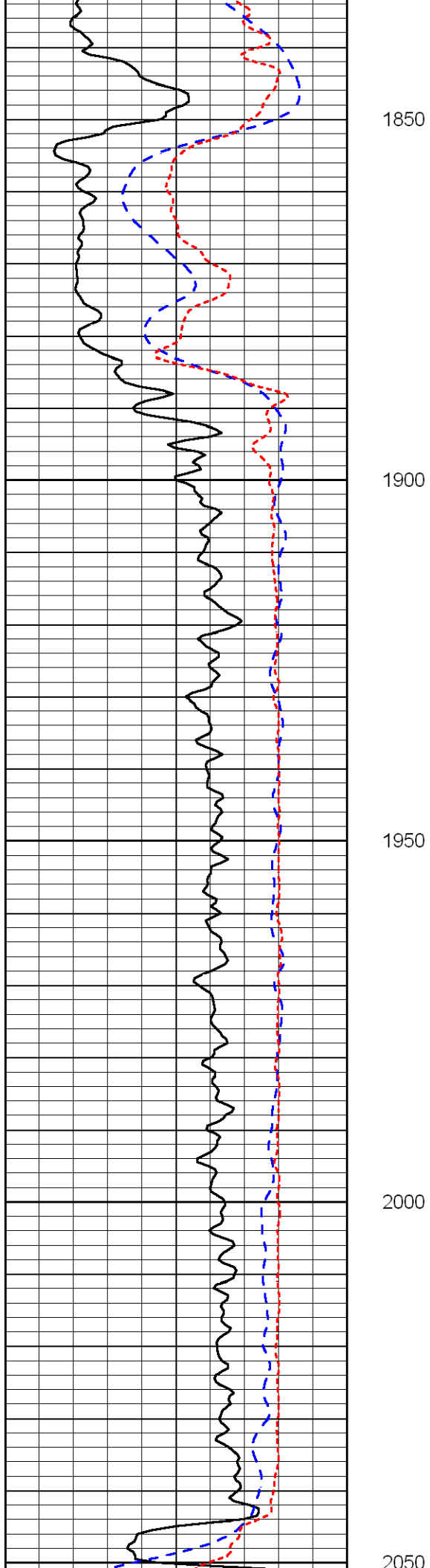


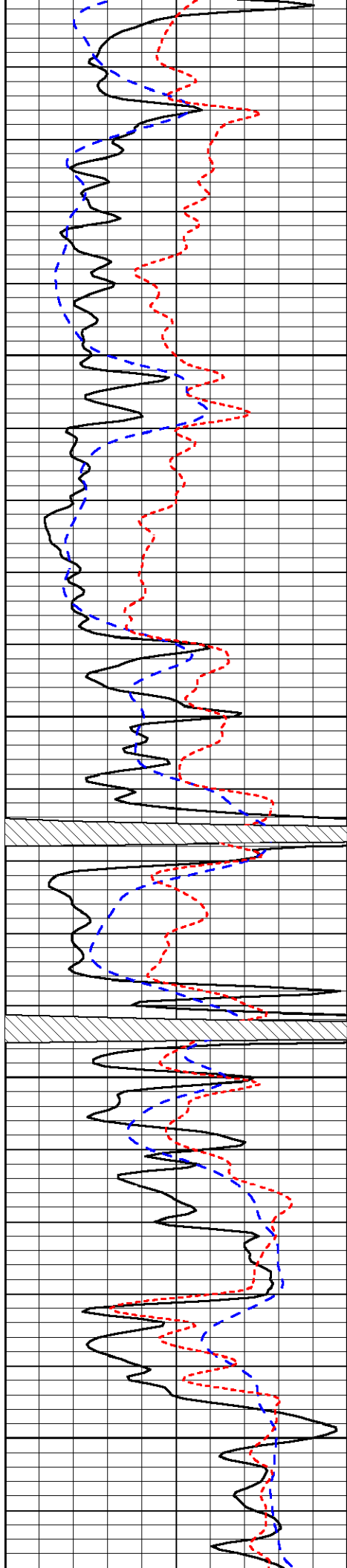
-32

-32

-32

-32



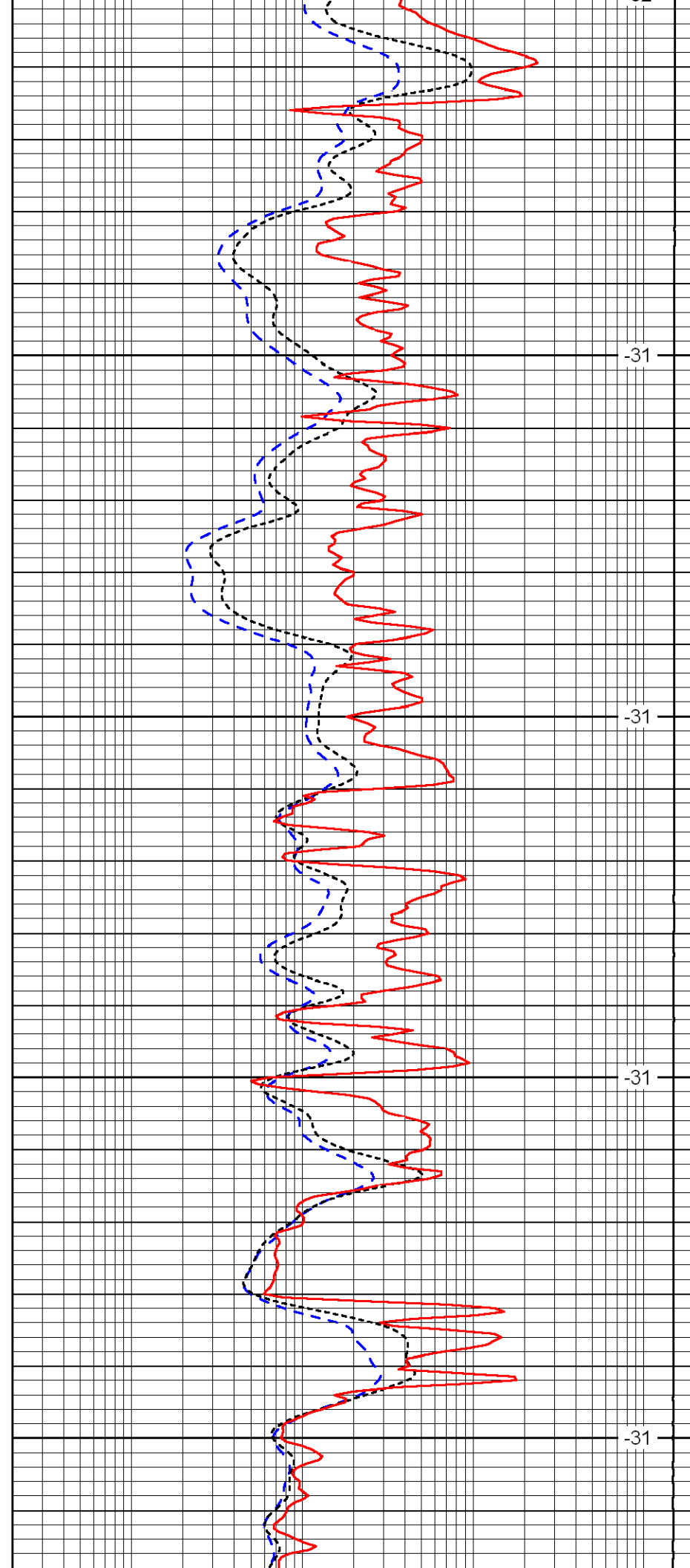


2100

2150

2200

2250

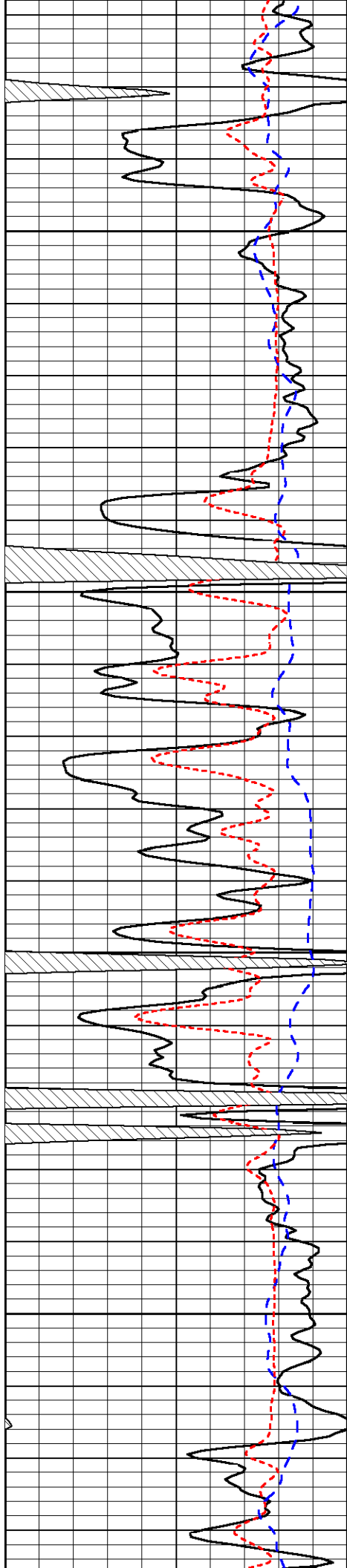


-31

-31

-31

-31

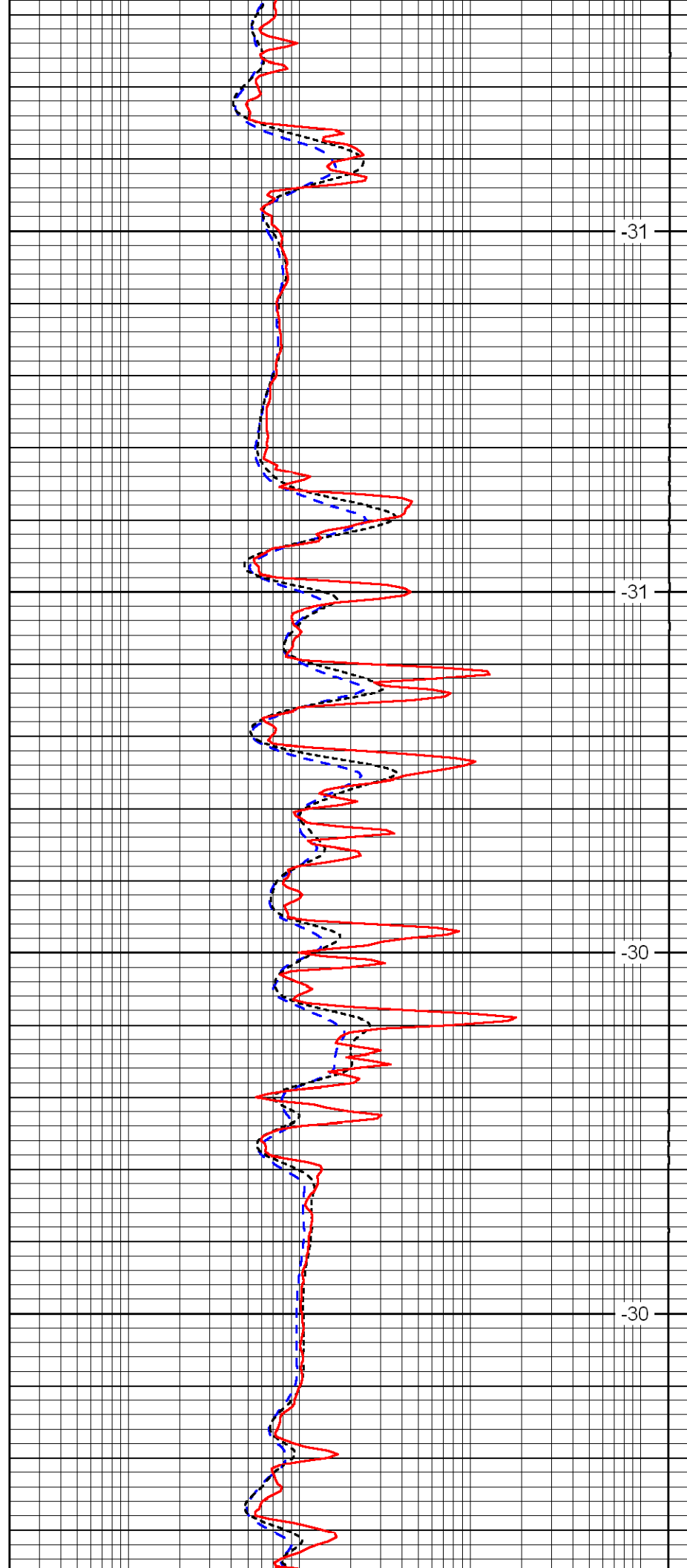


2300

2350

2400

2450

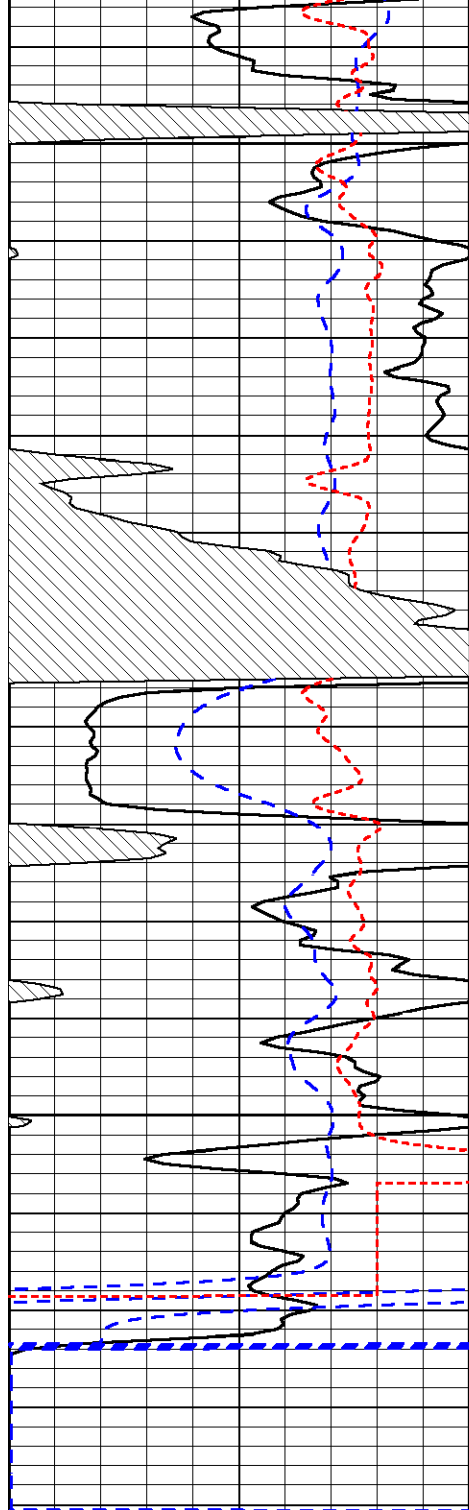


-31

-31

-30

-30

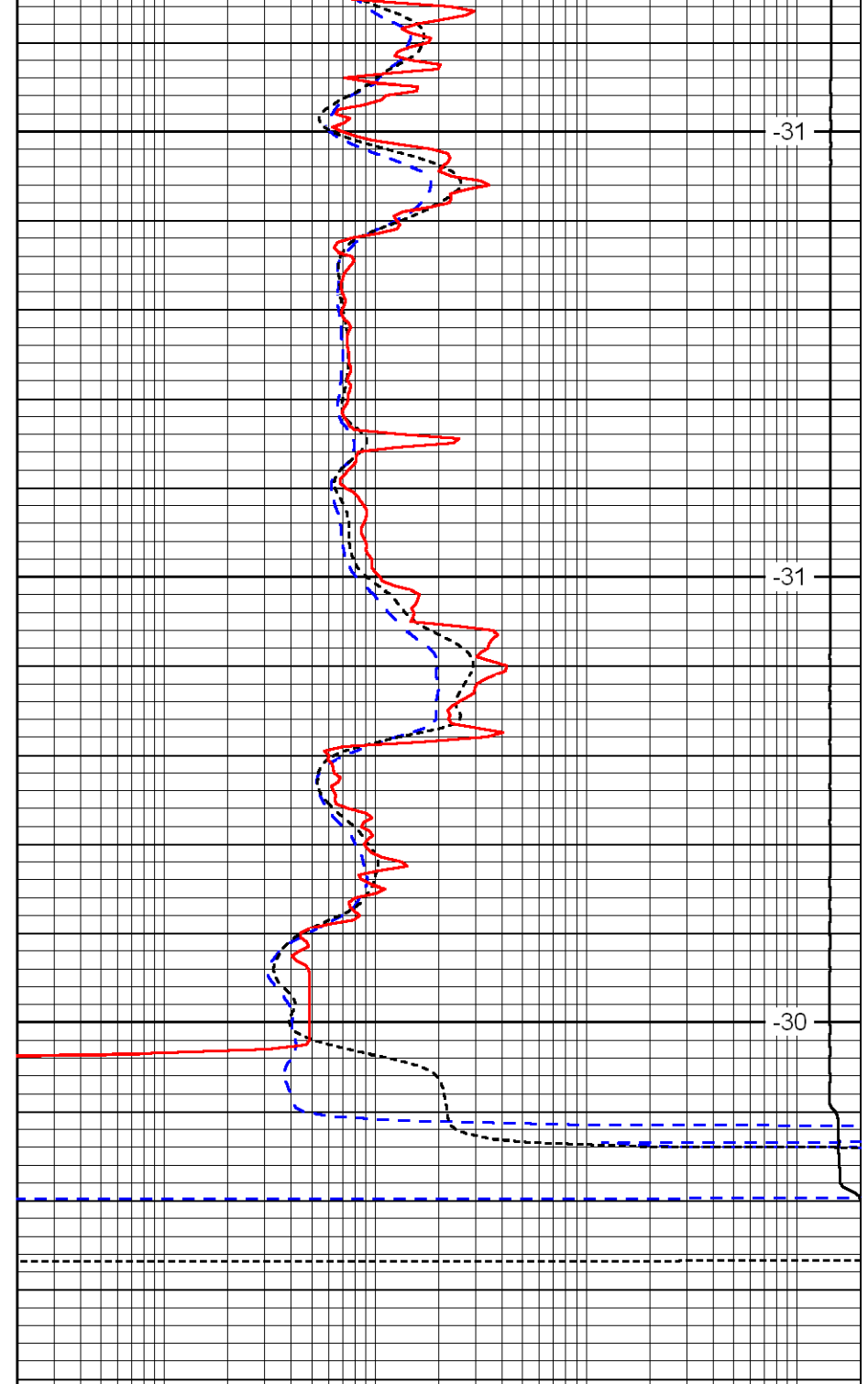


2500

2550

2600

| | | |
|------|-----------|-----|
| 0 | Gamma Ray | 150 |
| -200 | SP (MV) | 0 |
| -160 | Rxo / Rt | 40 |



-31

-31

-30

| | | |
|-------|-----------------------------|------|
| 0.2 | Deep Resistivity (Ohm-m) | 2000 |
| 0.2 | Medium Resistivity (Ohm-m) | 2000 |
| 0.2 | Shallow Resistivity (Ohm-m) | 2000 |
| 15000 | Line Tension (lb) | 0 |

LSPD
(ft/min)