

**COMPENSATED  
DENSITY/NEUTRON  
LOG**

Company BLACK STONE PETROLEUM, LLC.  
Well KOOCHEL MOUNTAIN #1  
Field OTIS-ALBERT  
County RUSH State KANSAS

Location: API #: 15-165-22157-00-00  
530' FSL & 440' FWL  
SEC 23 TWP 18S RGE 16W  
Permanent Datum GROUND LEVEL Elevation 1944  
Log Measured From KELLY BUSHING 5' A.G.L.  
Drilling Measured From KELLY BUSHING  
Elevation  
K.B. 1949  
D.F. 1947  
G.L. 1944

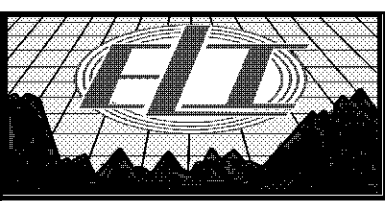
Date	4/16/18
Run Number	ONE
Depth Driller	3625
Depth Logger	3626
Bottom Logged Interval	3501
Top Log Interval	1000
Casing Driller	8 5/8" @ 980
Casing Logger	980
Bit Size	7 7/8
Type Fluid in Hole	CHEMICAL MUD
Density / Viscosity	9.2/42
PH / Fluid Loss	10.3/10.2
Source of Sample	FLOWLINE
Rm @ Meas. Temp	2.3 @ 62F
Rmt @ Meas. Temp	1.72 @ 62F
Rmc @ Meas. Temp	2.76 @ 62F
Source of Rmf / Rmc	MEASUREMENT
Rm @ BHT	1.27 @ 112F
Time Circulation Stopped	2 HOURS
Time Logger on Bottom	////
Maximum Recorded Temperature	112F
Equipment Number	3802
Location	HAYS, KANSAS
Recorded By	GUS PFANENSTIEL
Witnessed By	KEATON JONES

<<< Fold Here >>>

All interpretations are opinions based on inferences from electrical or other measurements and we cannot and do not guarantee the accuracy or correctness of any interpretation, and we shall not, except in the case of gross or willful negligence on our part, be liable or responsible for any loss, costs, damages, or expenses incurred or sustained by anyone resulting from any interpretation made by any of our officers, agents or employees. These interpretations are also subject to our general terms and conditions set out in our current Price Schedule.

Comments

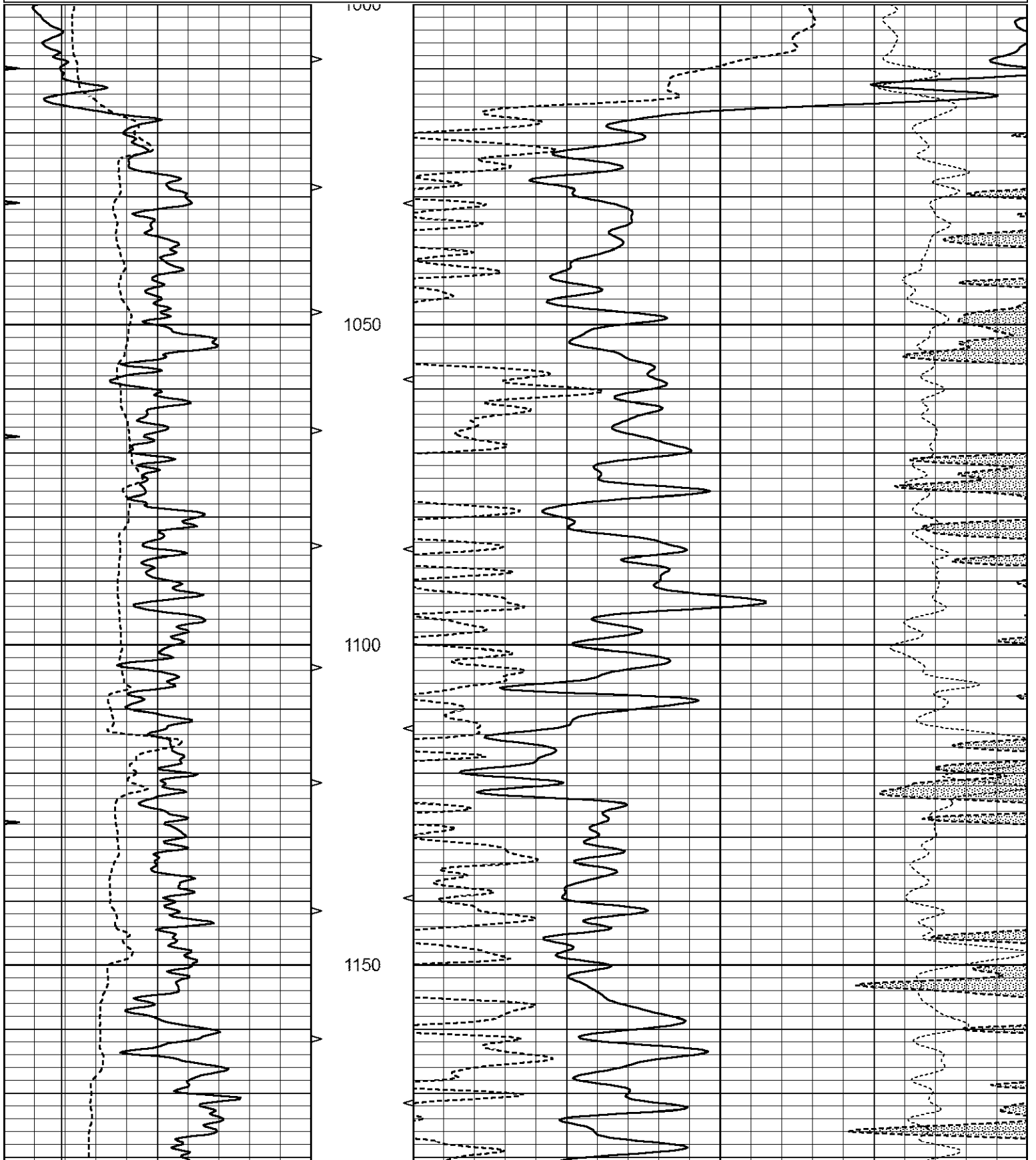
THANK YOU FOR USING ELI WIRELINE SERVICES, HAYS, KS. ( 785 ) 628-6395  
DIRECTIONS  
ALBERT 2 WEST- 1/8 NORTH

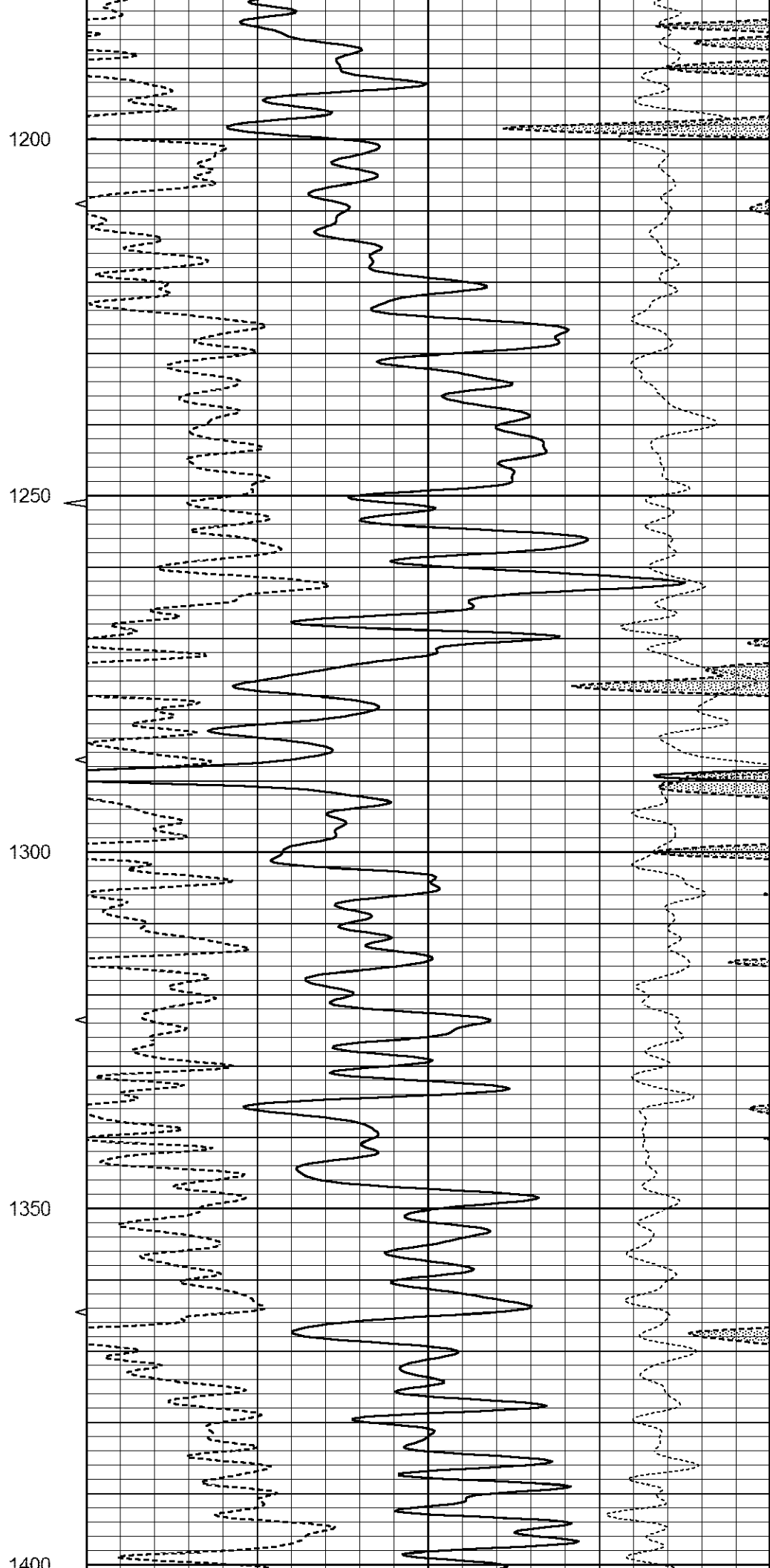
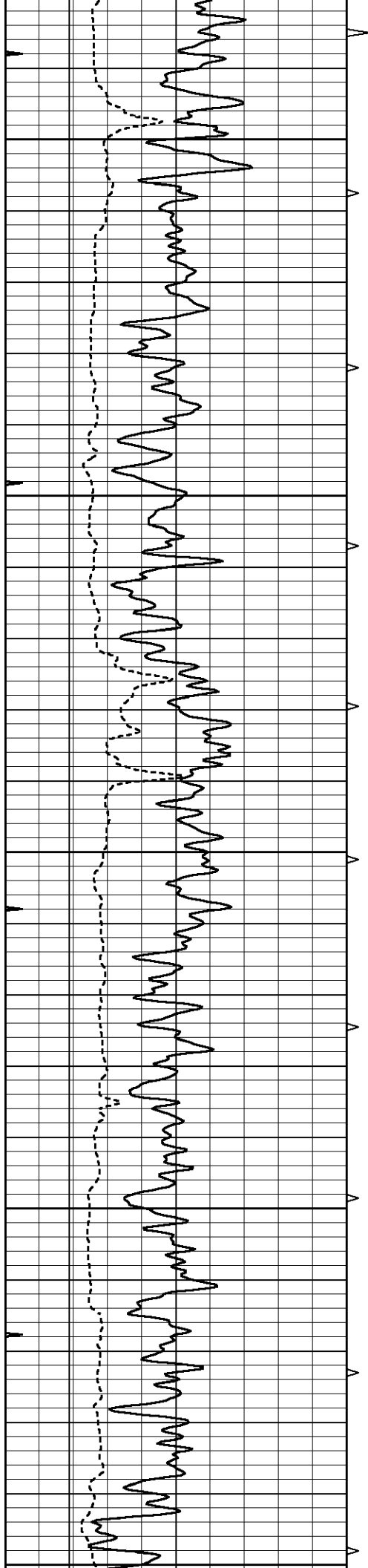


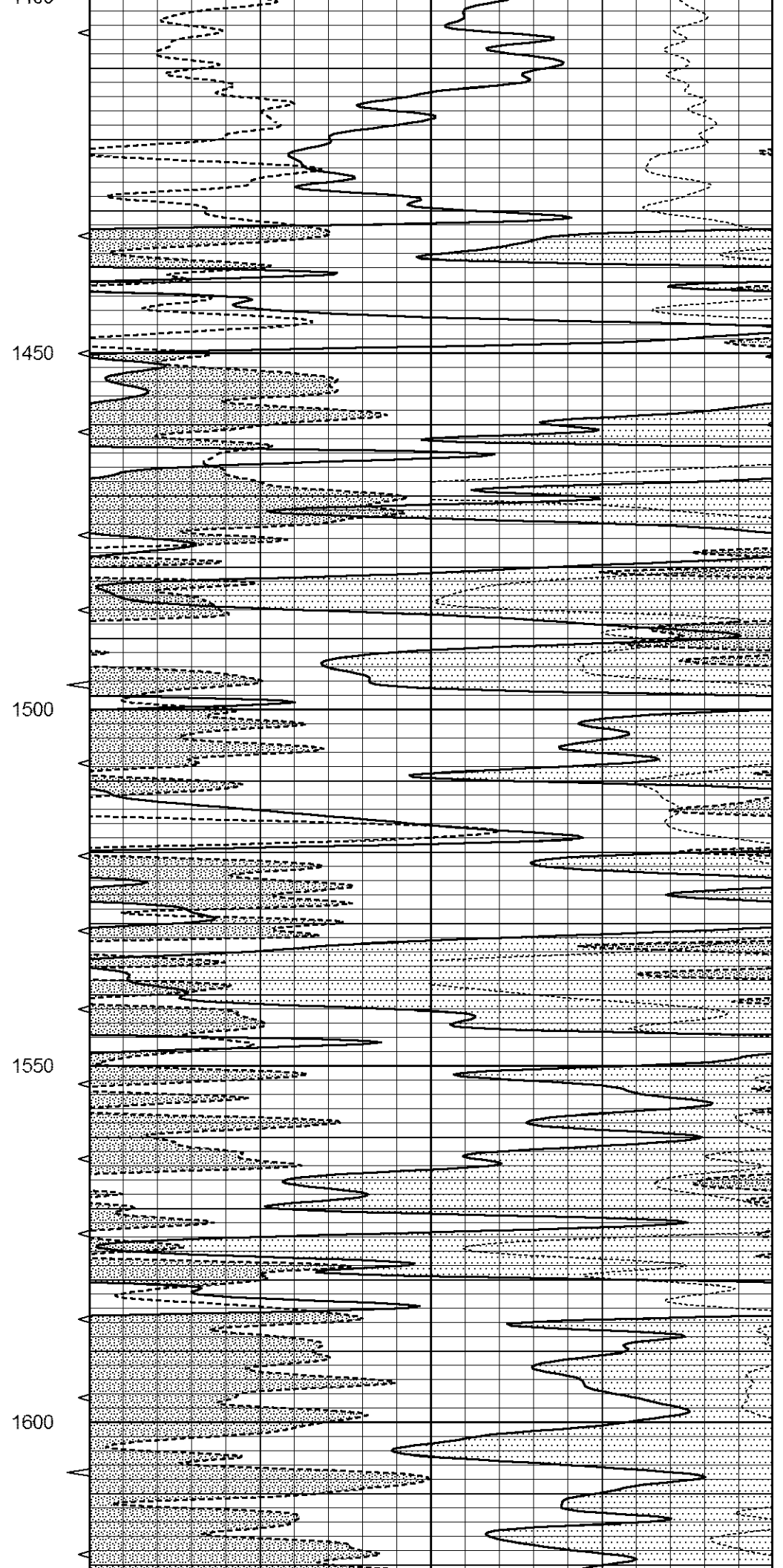
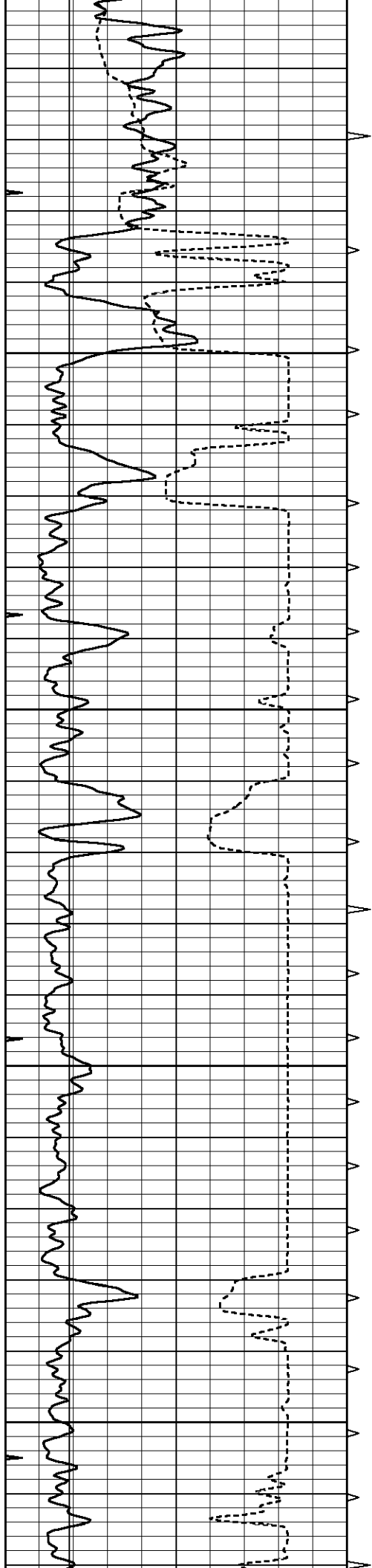
**MAIN PASS**

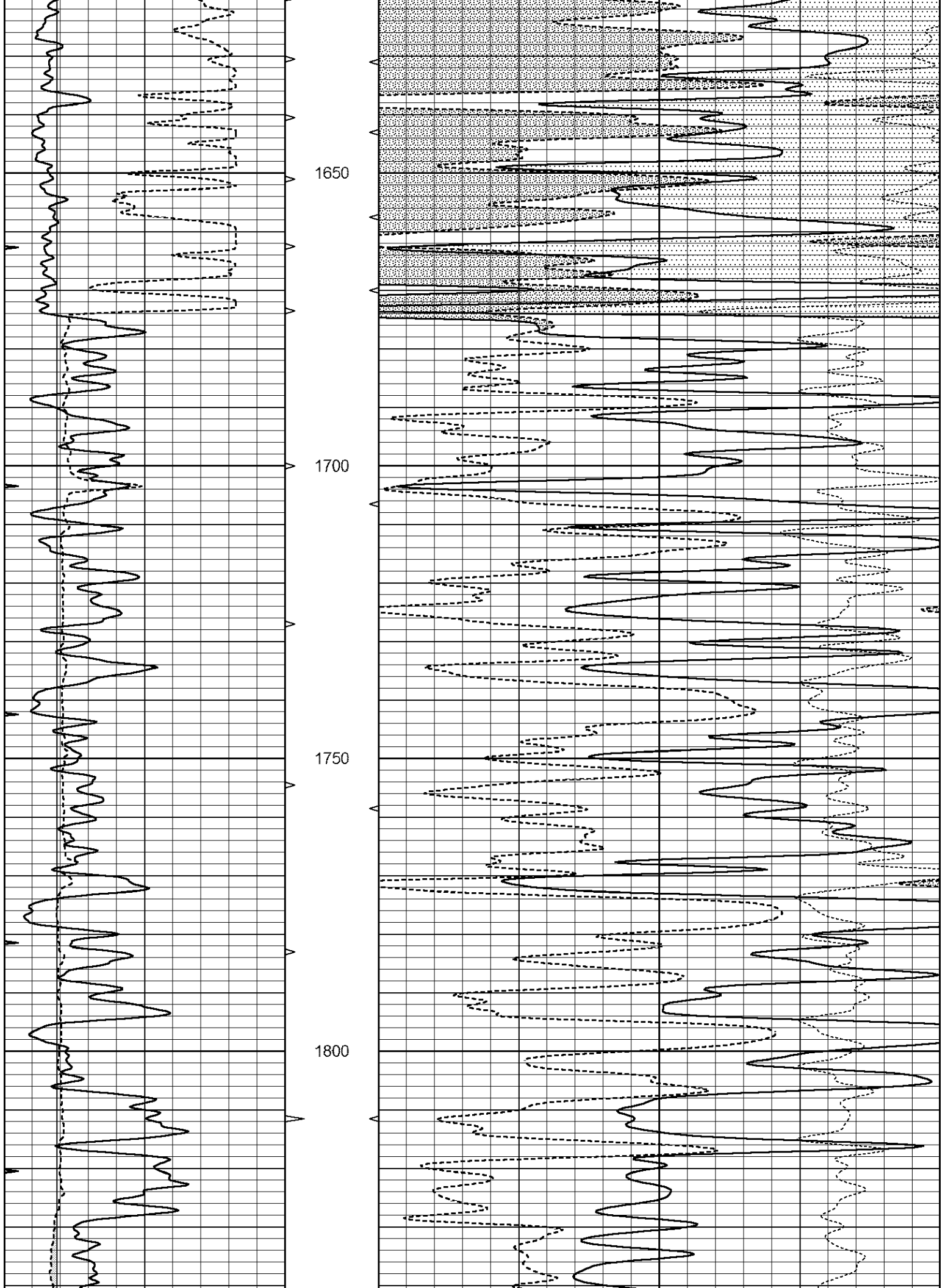
Database File 2043ddn.db  
 Dataset Pathname pass3.1  
 Presentation Format \_den\_neu  
 Dataset Creation Tue Apr 17 02:04:12 2018  
 Charted by Depth in Feet scaled 1:240

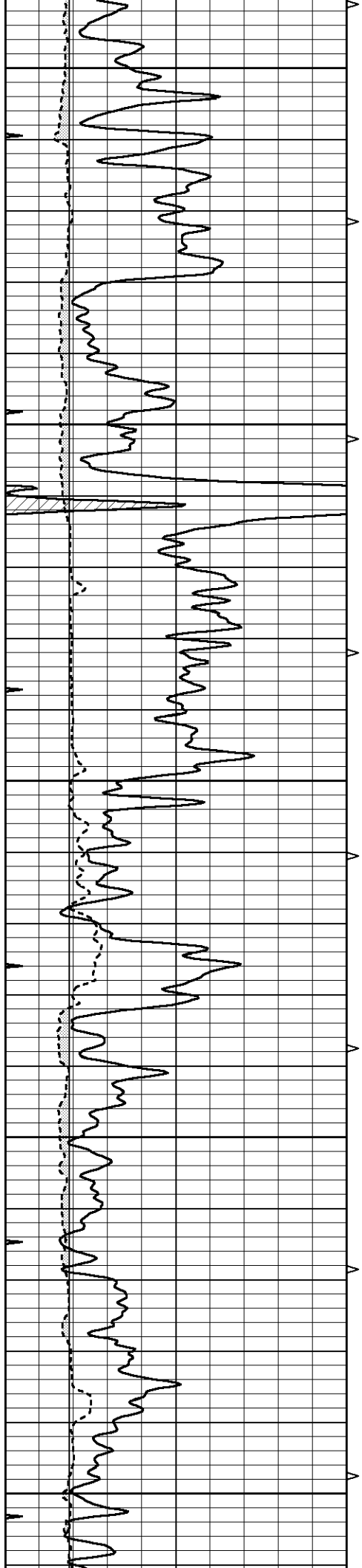
0	GAMMA RAY (GAPI)	150	AVTX	30	COMPENSATED DENSITY (pu)	-10	
6	CALIPER (in)	16	10 (ft3)	0	30	COMPENSATED NEUTRON (pu)	-10
0	MINMK	20	BVTX			-0.25 CORRECTION (g/cc)	0.25
			0 (ft3)	10			











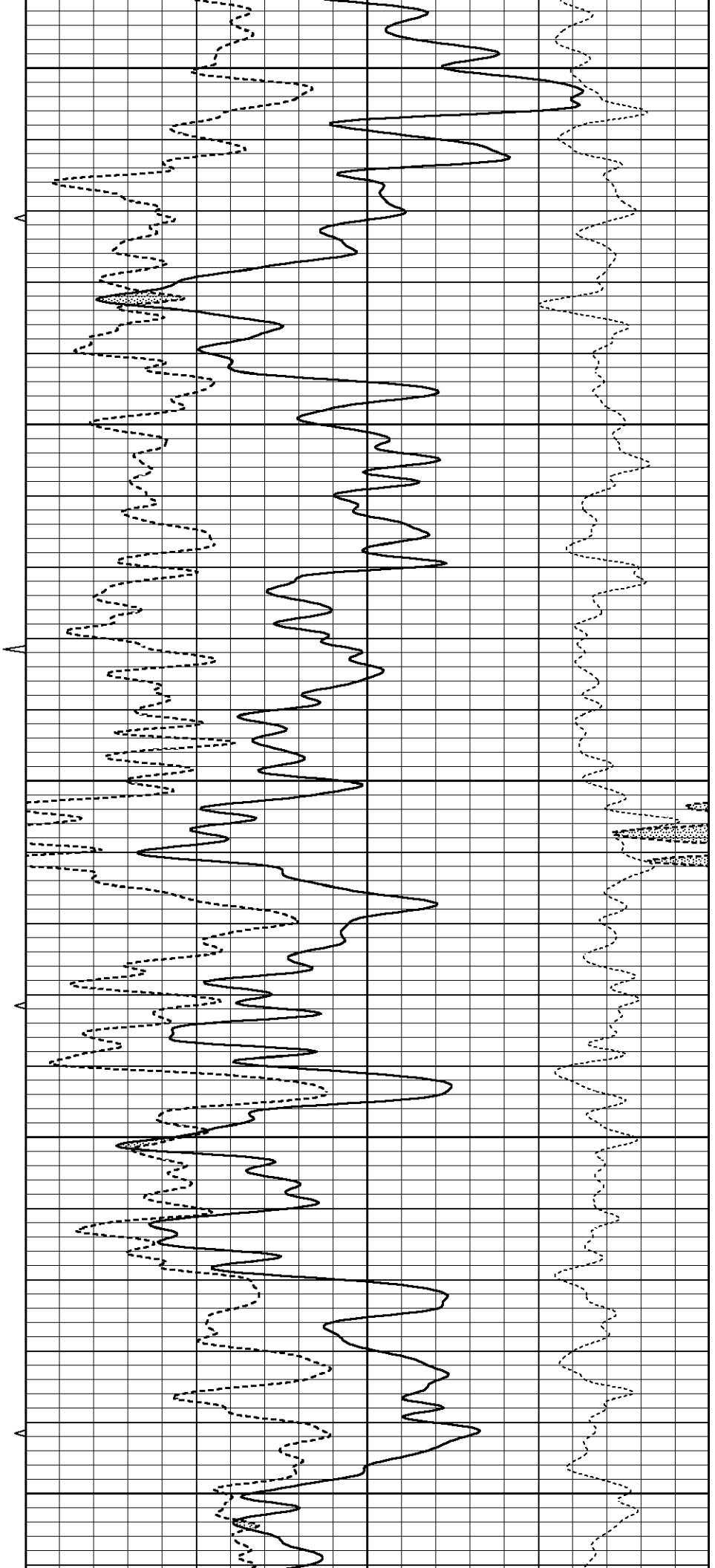
1850

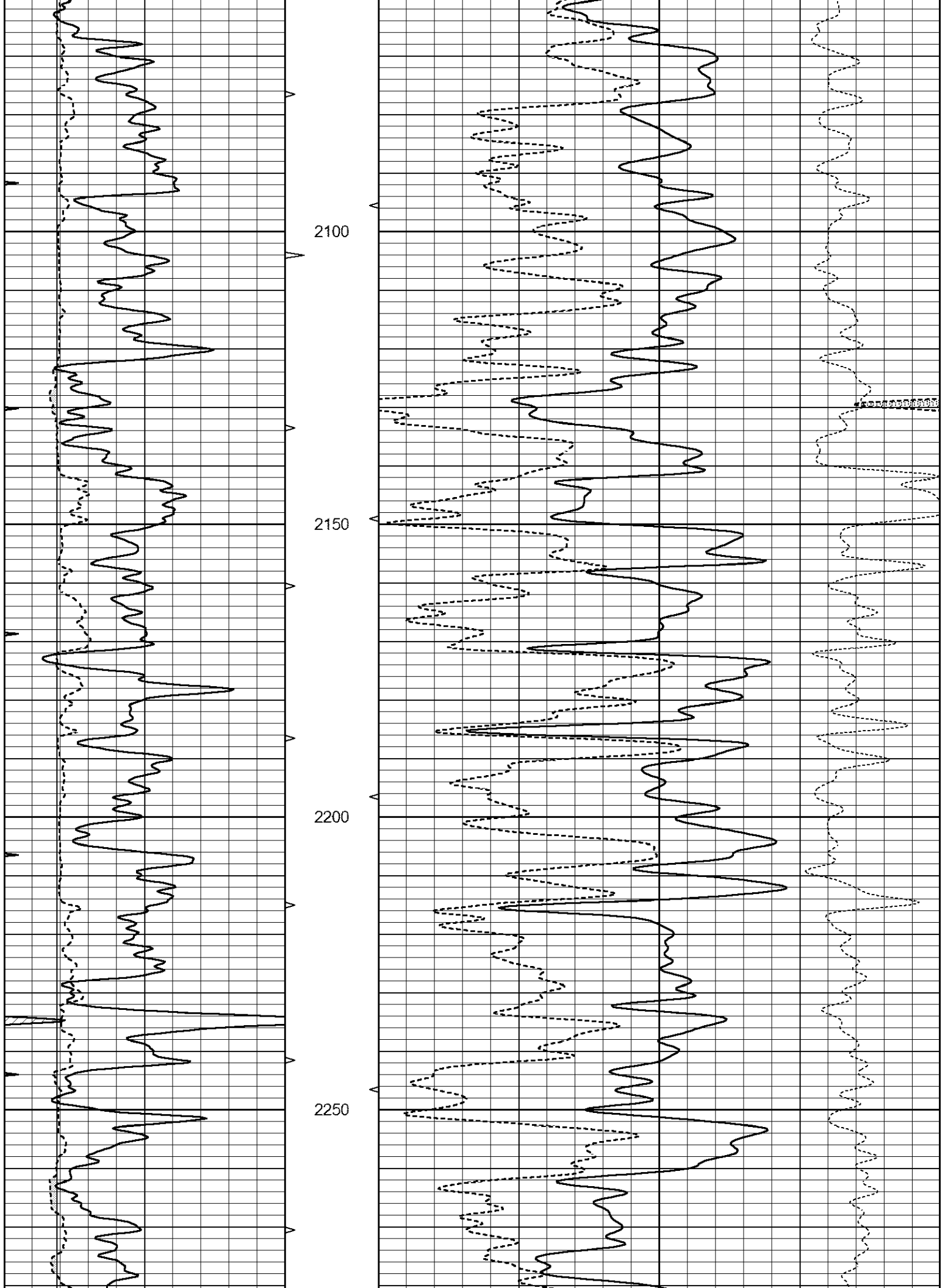
1900

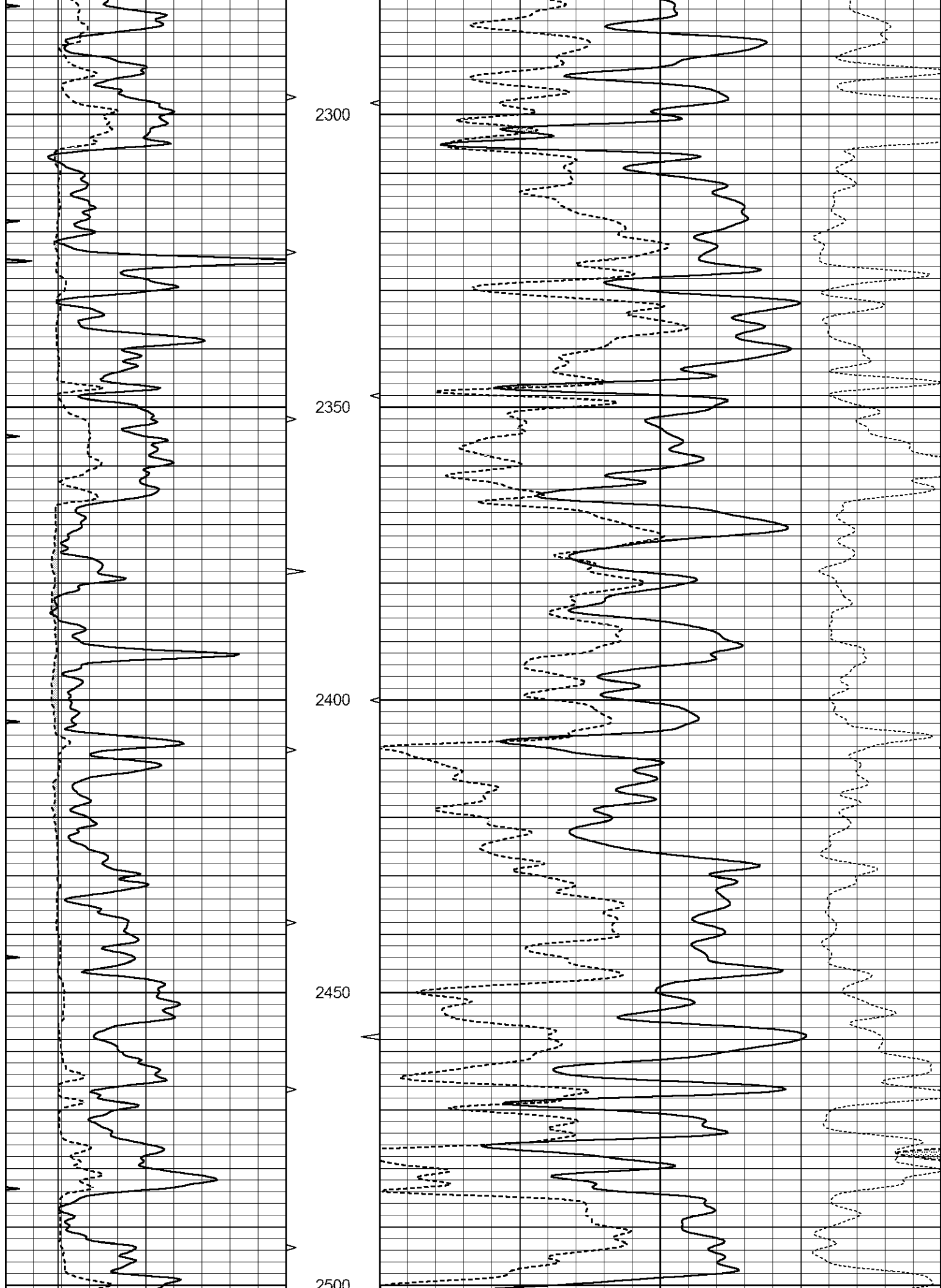
1950

2000

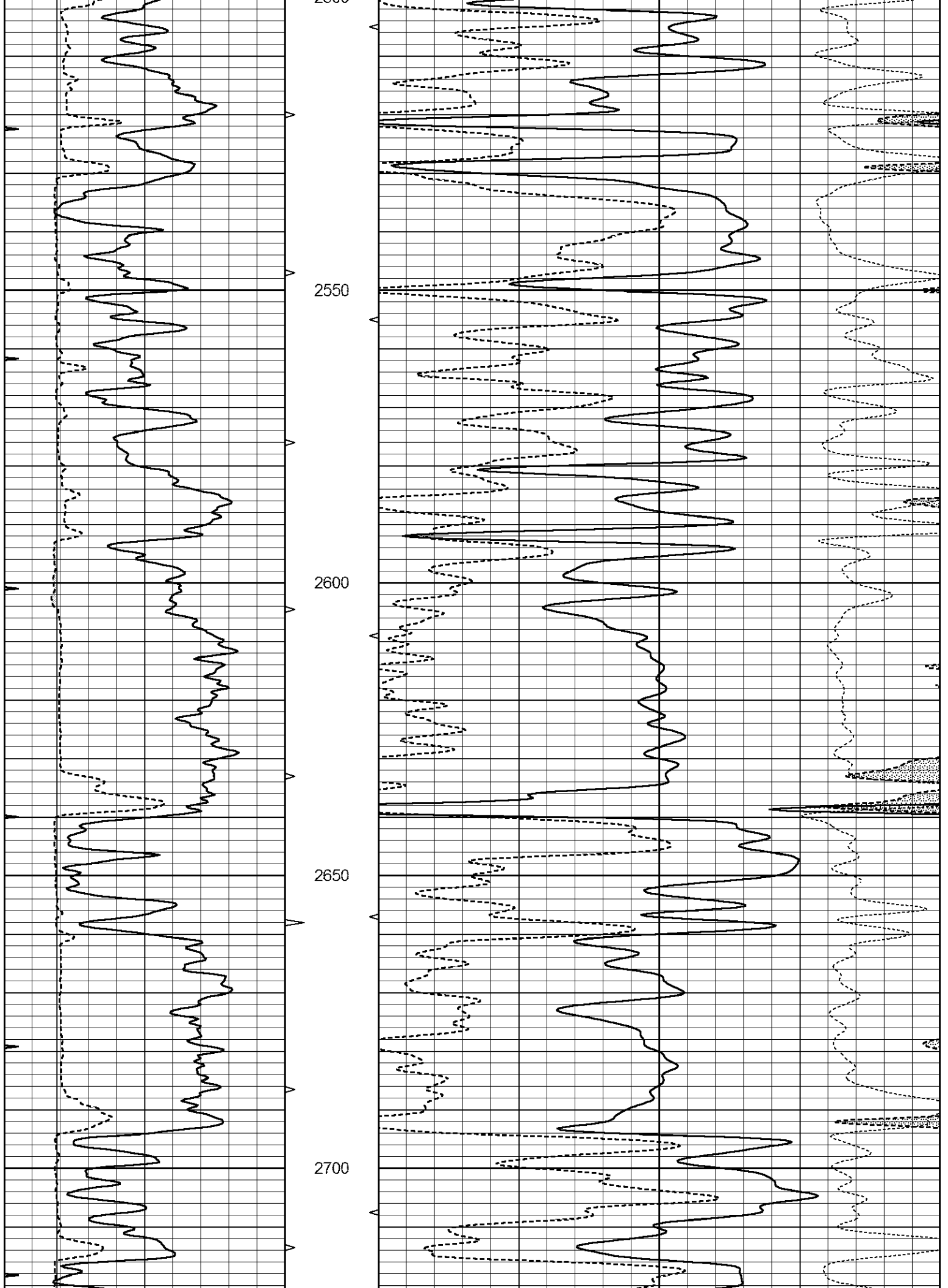
2050

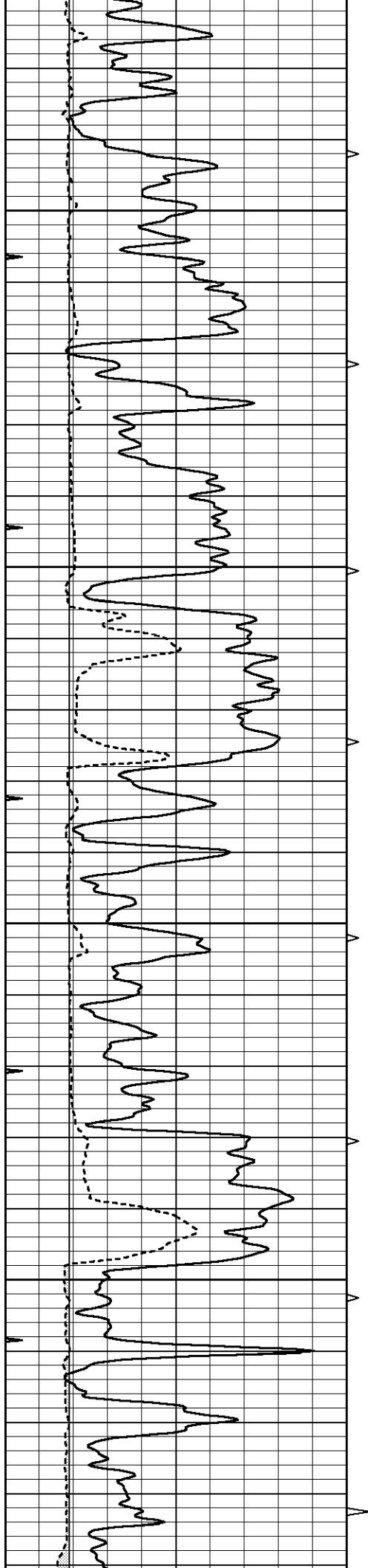










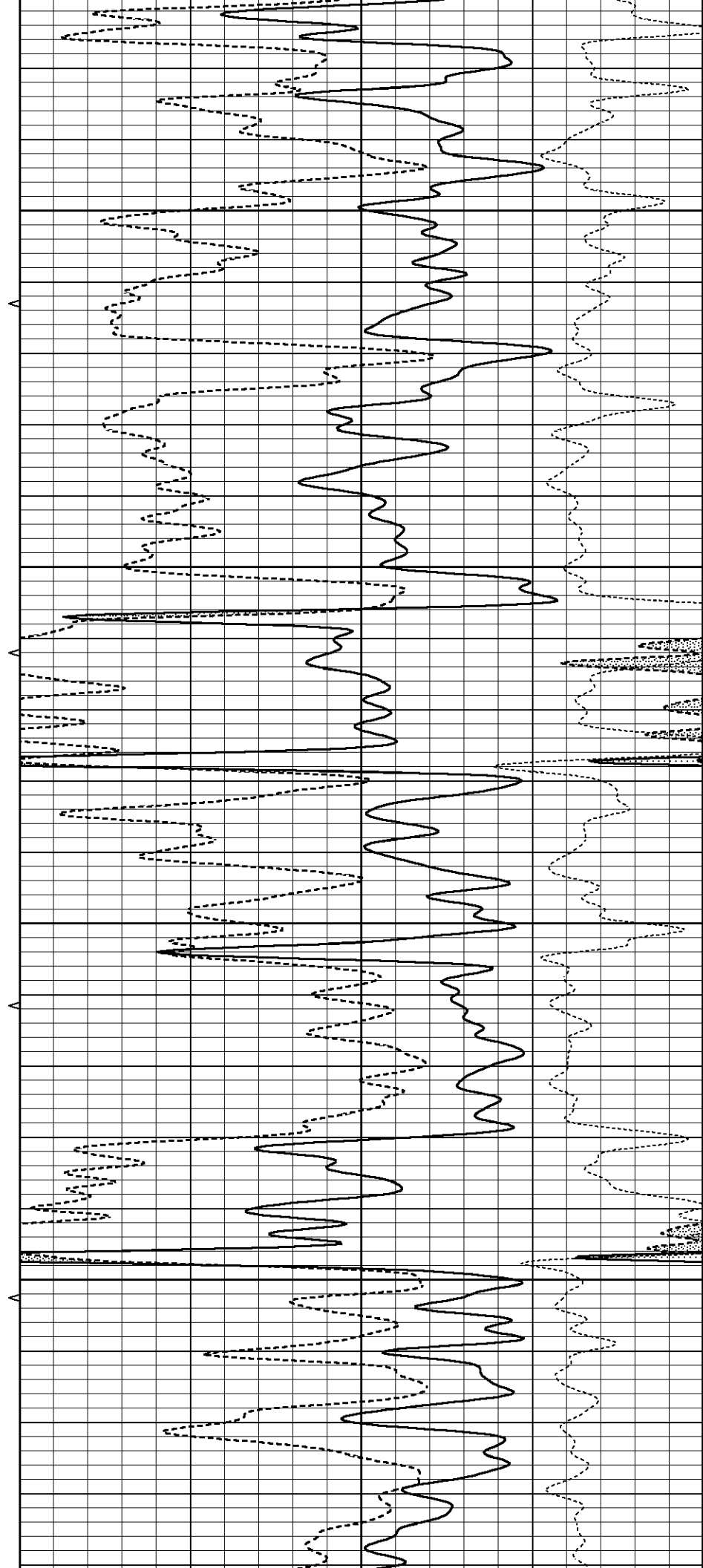


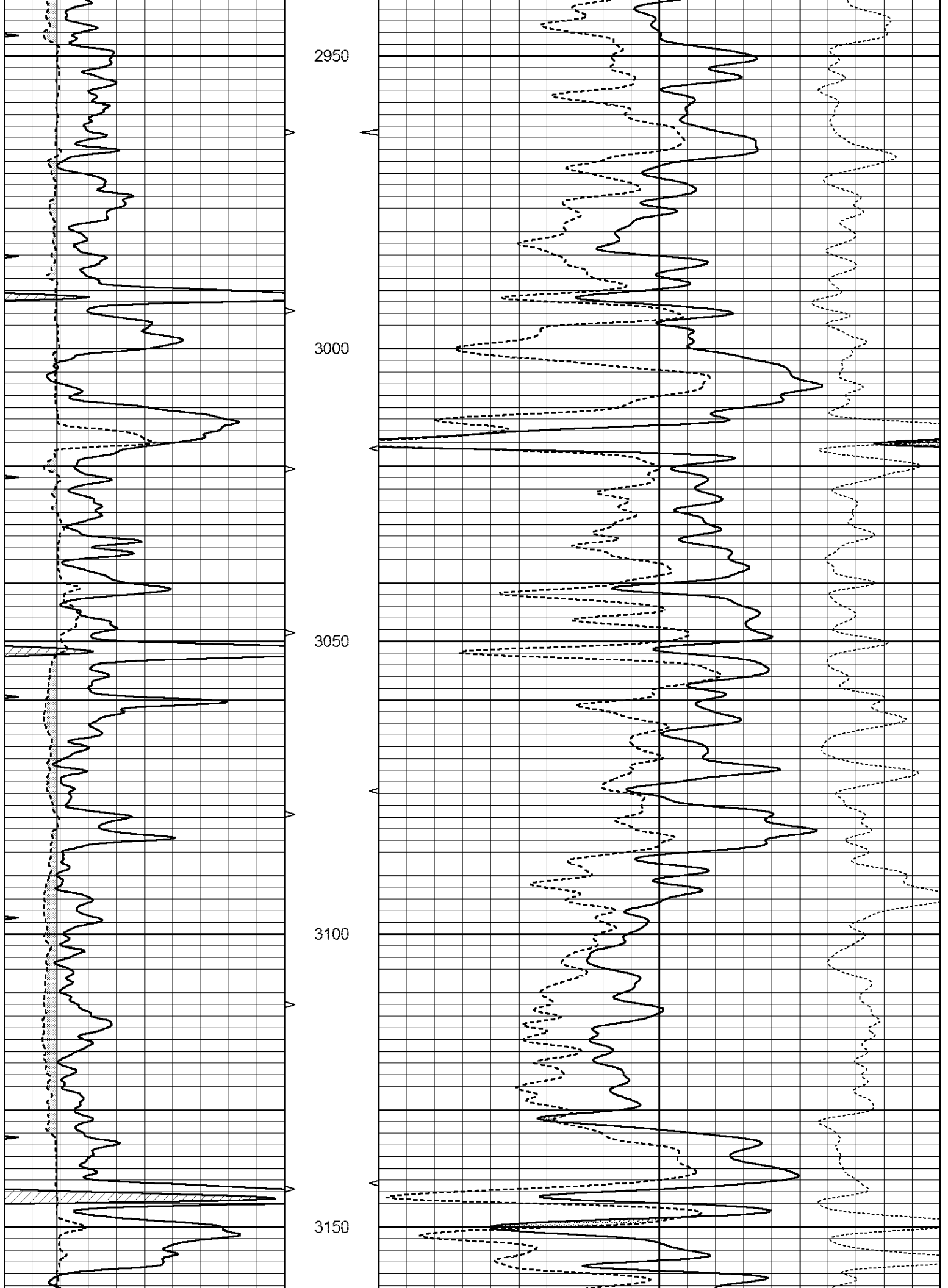
2750

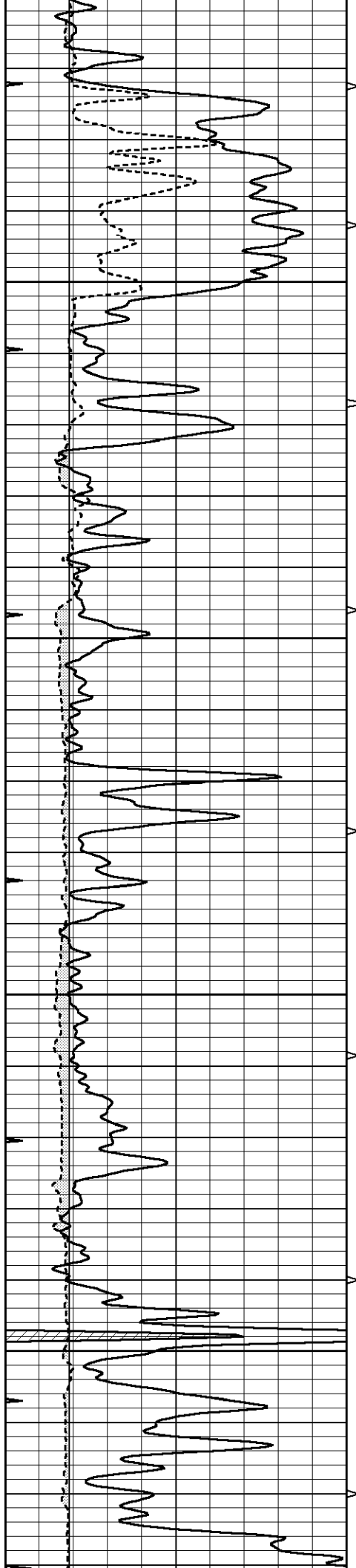
2800

2850

2900





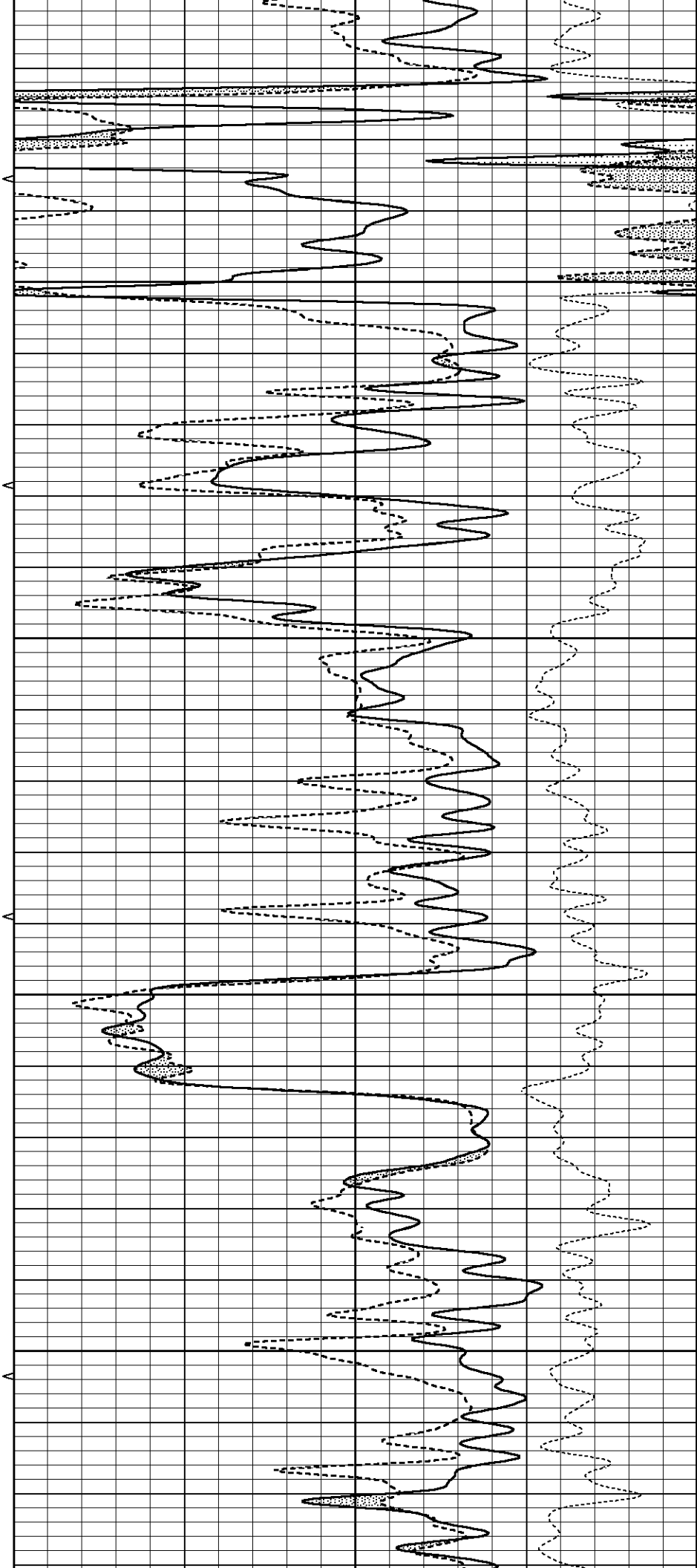


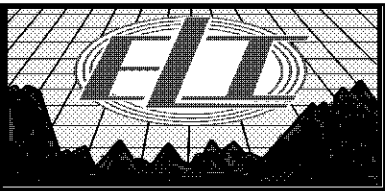
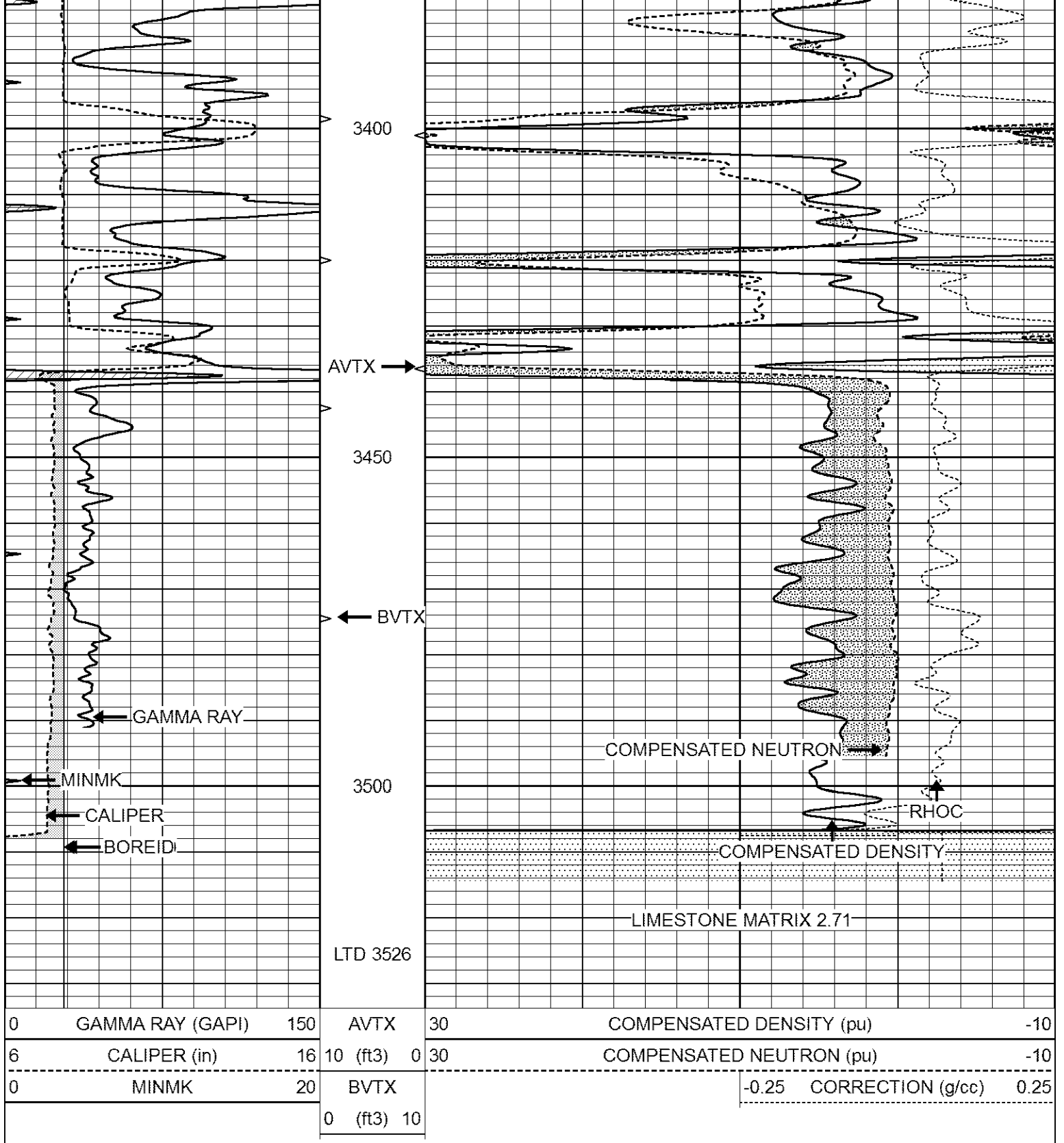
3200

3250

3300

3350

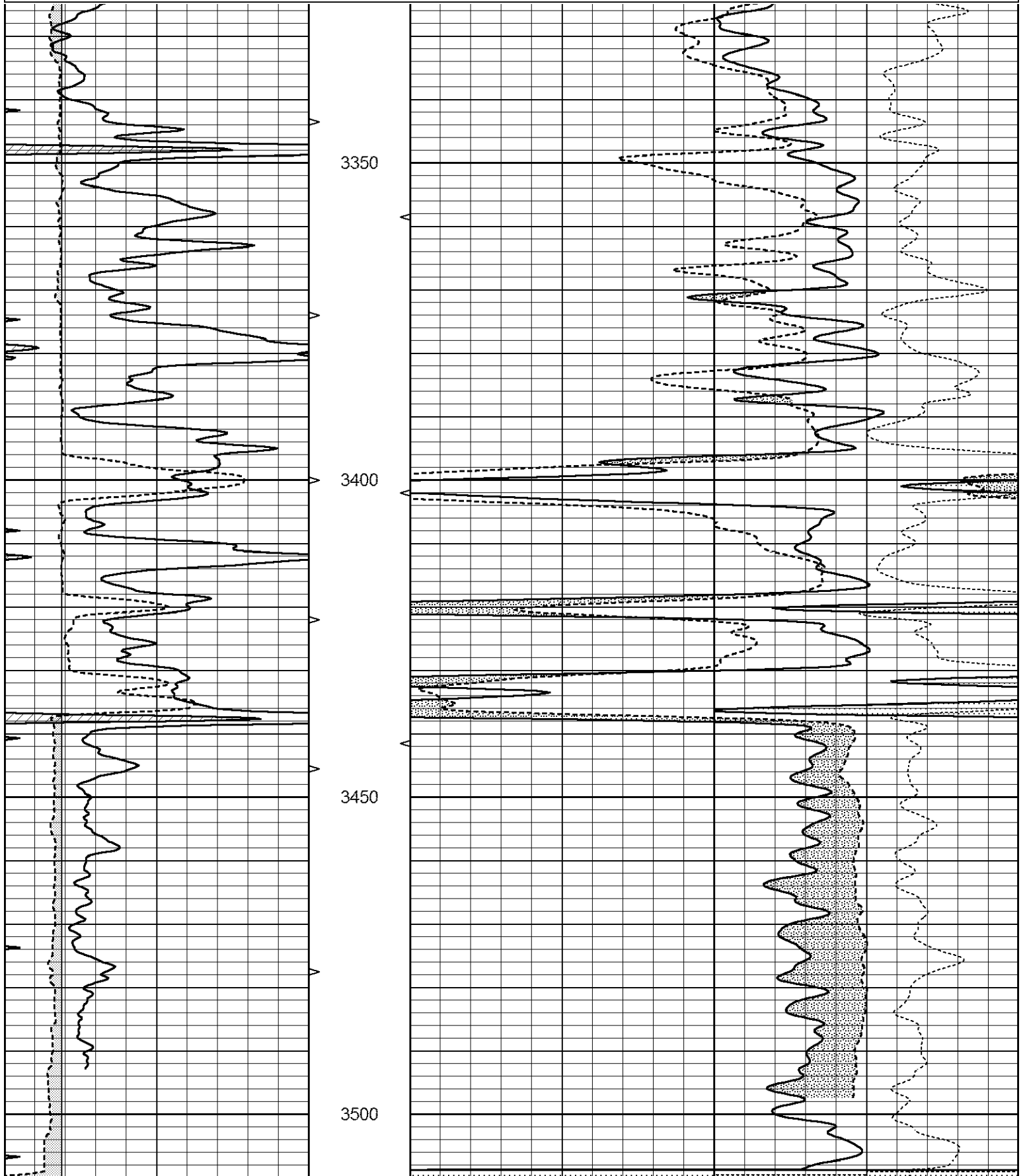




# REPEAT SECTION

Database File 2043ddn.db  
 Dataset Pathname pass2RP  
 Presentation Format \_den\_neu  
 Dataset Creation Tue Apr 17 02:14:15 2018  
 Charted by Depth in Feet scaled 1:240

0	GAMMA RAY (GAPI)	150	AVTX	30	COMPENSATED DENSITY (pu)	-10	
6	CALIPER (in)	16	10 (ft3)	0	30	COMPENSATED NEUTRON (pu)	-10
0	MINMK	20	BVTX			-0.25 CORRECTION (g/cc)	0.25
			0 (ft3)	10			



0	GAMMA RAY (GAPI)		150	AVTX		30	COMPENSATED DENSITY (pu)										-10			
6	CALIPER (in)		16	10 (ft3)	0	30	COMPENSATED NEUTRON (pu)										-10			
0	MINMK		20	BVTX												-0.25 CORRECTION (g/cc)	0.25			
				0 (ft3)	10															