

MICRO LOG

Company BLACK STONE PETROLEUM, LLC.
 Well KOOCHEL MOUNTAIN #1
 Field OTIS-ALBERT
 County RUSH State KANSAS

Location: API #: 15-165-22157-00-00
 530' FSL & 440' FWL
 SEC 23 TWP 18S RGE 16W
 Permanent Datum GROUND LEVEL Elevation 1944
 Log Measured From KELLY BUSHING 5' A.G.L
 Drilling Measured From KELLY BUSHING
 Other Services CDL/CNL/DIL SONIC
 Elevation K.B. 1949
 D.F. 1947
 G.L. 1944

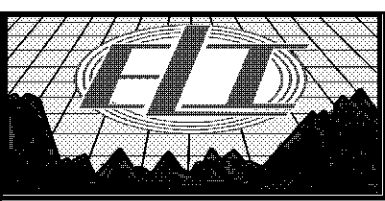
Date	4/16/18
Run Number	TWO
Depth Driller	3625
Depth Logger	3626
Bottom Logged Interval	3510
Top Log Interval	1000
Casing Driller	8 5/8" @ 980
Casing Logger	980
Bit Size	7 7/8
Type Fluid in Hole	CHEMICAL MUD
Density / Viscosity	9.2/42
PH / Fluid Loss	10.3/10.2
Source of Sample	FLOWLINE
Rm @ Meas. Temp	2.3 @ 62F
Rmt @ Meas. Temp	1.72 @ 62F
Rmc @ Meas. Temp	2.76 @ 62F
Source of Rmf / Rmc	MEASUREMENT
Rm @ BHT	1.27 @ 112F
Time Circulation Stopped	2 HOURS
Time Logger on Bottom	////
Maximum Recorded Temperature	112F
Equipment Number	3802
Location	HAYS, KANSAS
Recorded By	GUS PFANENSTIEL
Witnessed By	KEATON JONES

<<< Fold Here >>>

All interpretations are opinions based on inferences from electrical or other measurements and we cannot and do not guarantee the accuracy or correctness of any interpretation, and we shall not, except in the case of gross or willful negligence on our part, be liable or responsible for any loss, costs, damages, or expenses incurred or sustained by anyone resulting from any interpretation made by any of our officers, agents or employees. These interpretations are also subject to our general terms and conditions set out in our current Price Schedule.

Comments

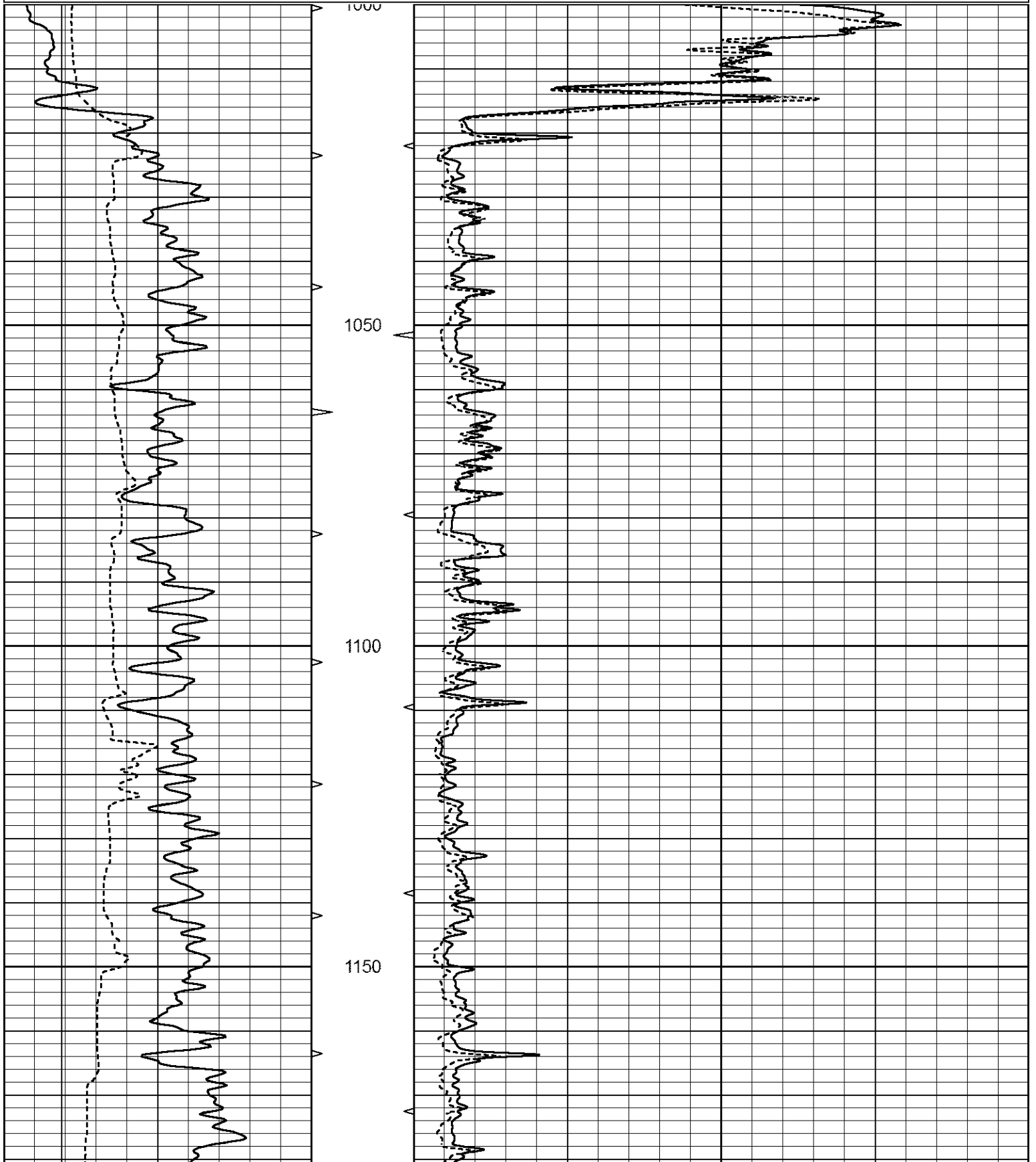
THANK YOU FOR USING ELI WIRELINE SERVICES, HAYS, KS. (785) 628-6395
 DIRECTIONS
 ALBERT 2 WEST- 1/8 NORTH

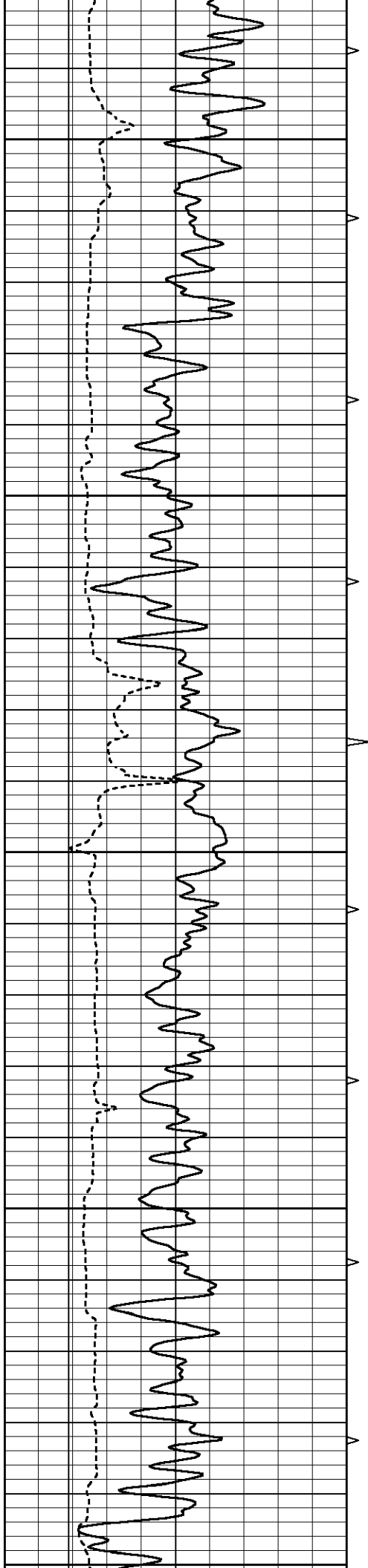


MAIN PASS

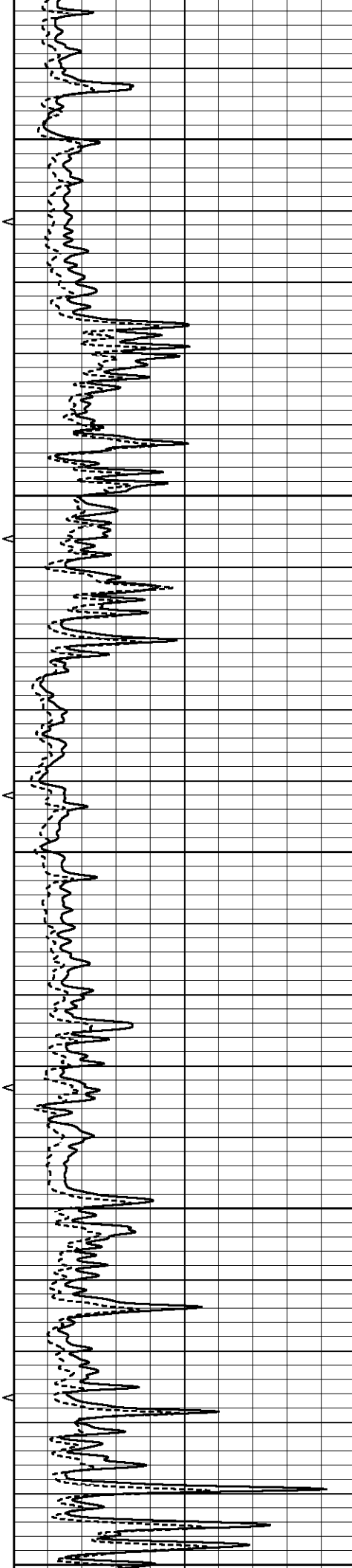
Database File 2043ddn.db
 Dataset Pathname pass5.1
 Presentation Format _micro
 Dataset Creation Tue Apr 17 02:50:29 2018
 Charted by Depth in Feet scaled 1:240

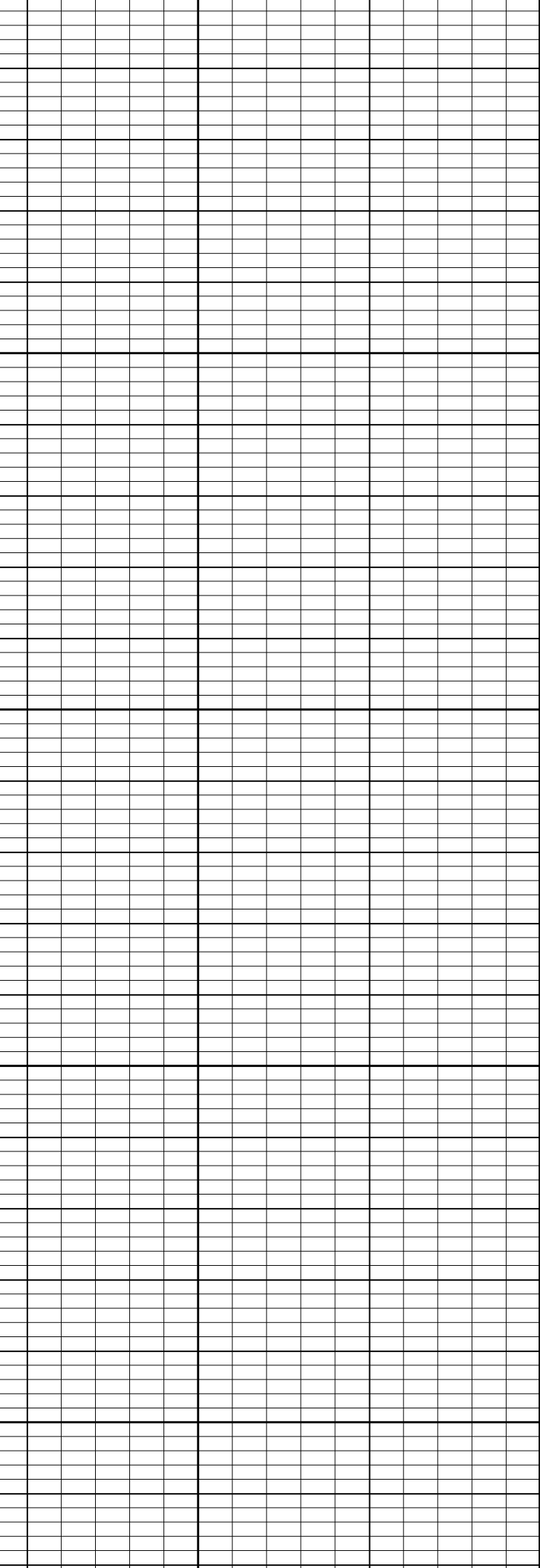
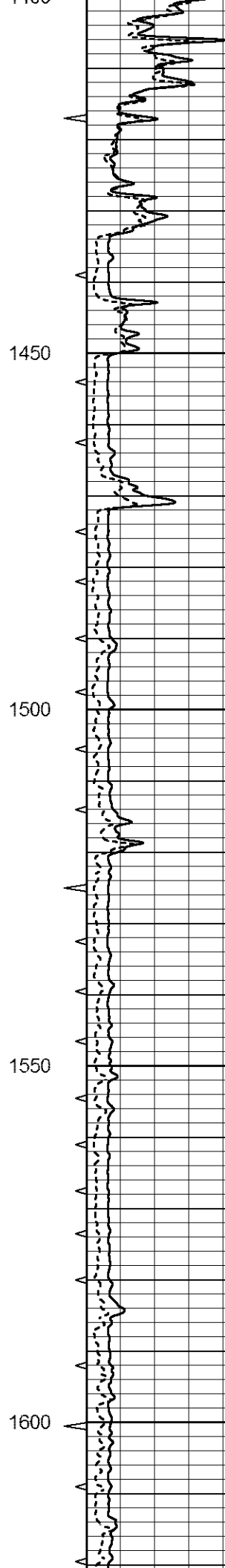
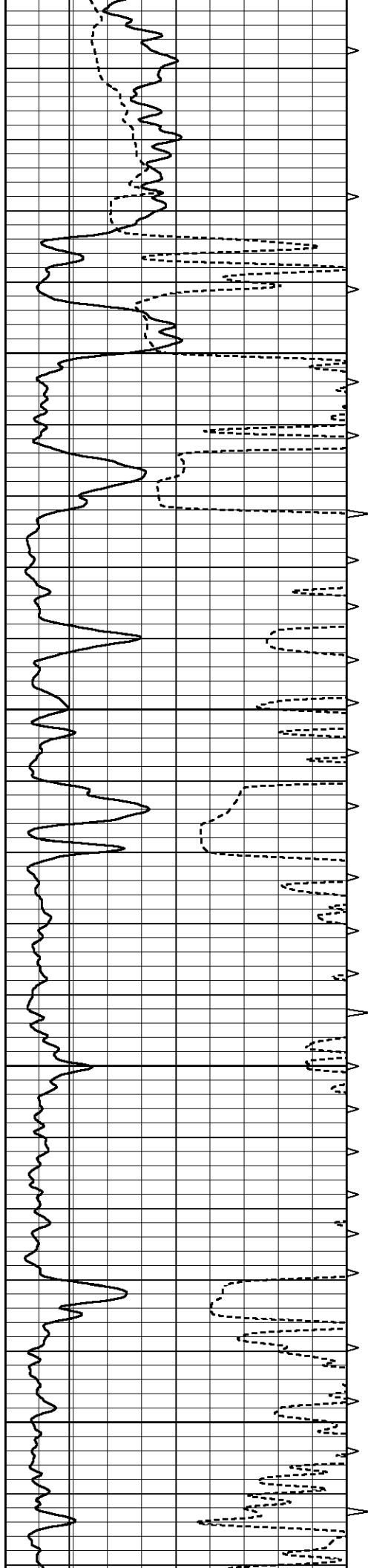
0	GAMMA RAY (GAPI)	150	ABHV	0	MEL1.5 (Ohm-m)	40
6	CALIPER (in)	16	10 (ft3)	0	MEL2.0 (Ohm-m)	40
			TBHV			
			0 (ft3)	10		

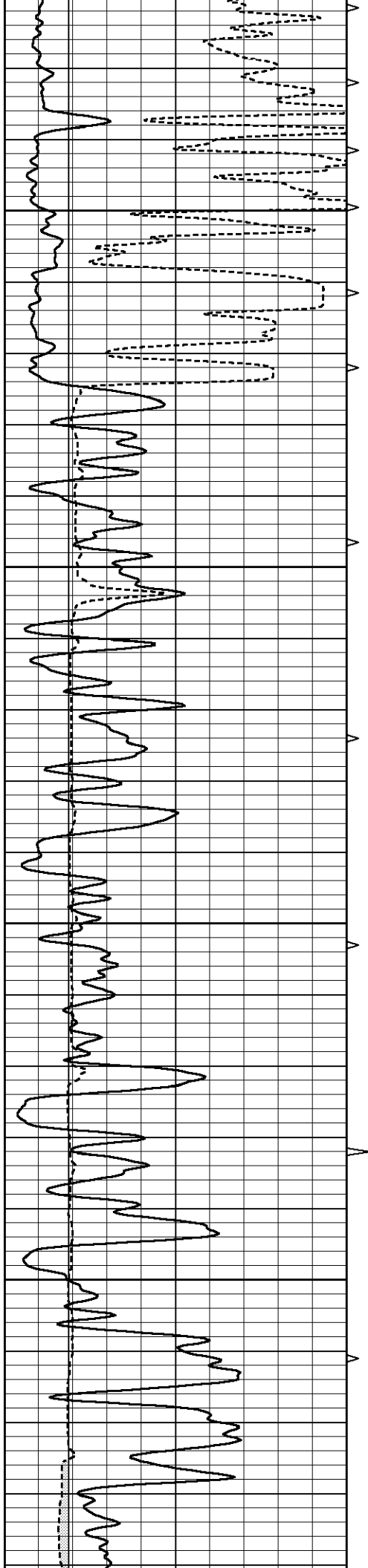




1200
1250
1300
1350
1400





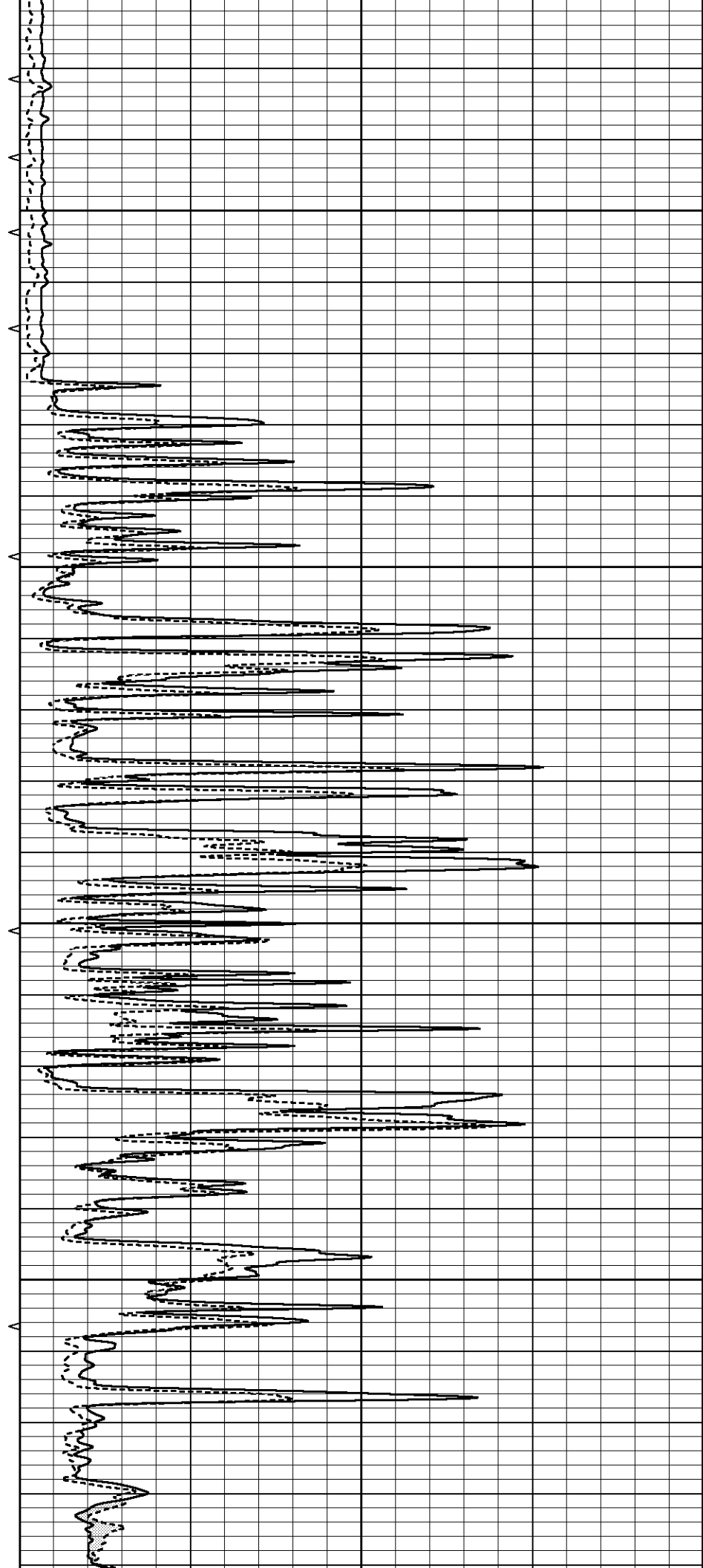


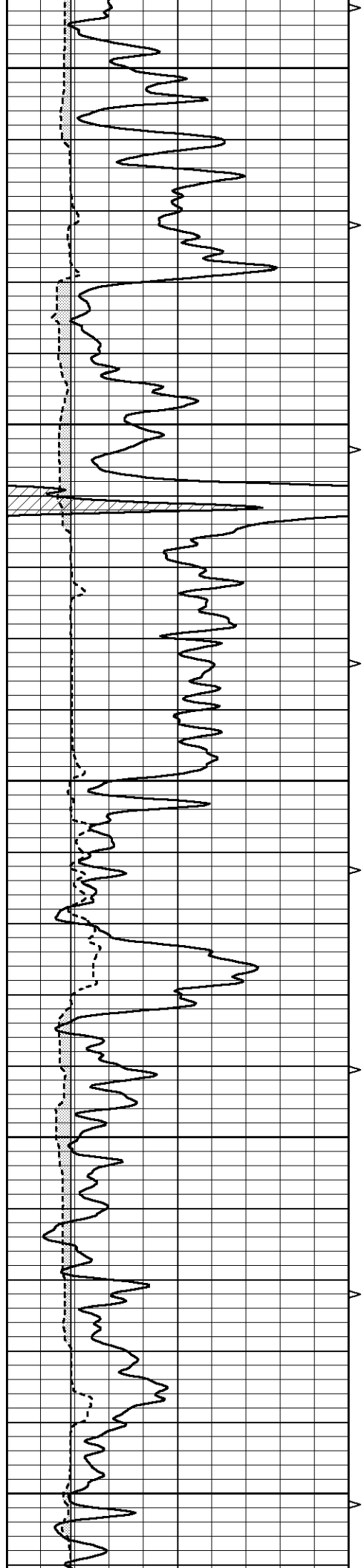
1650

1700

1750

1800





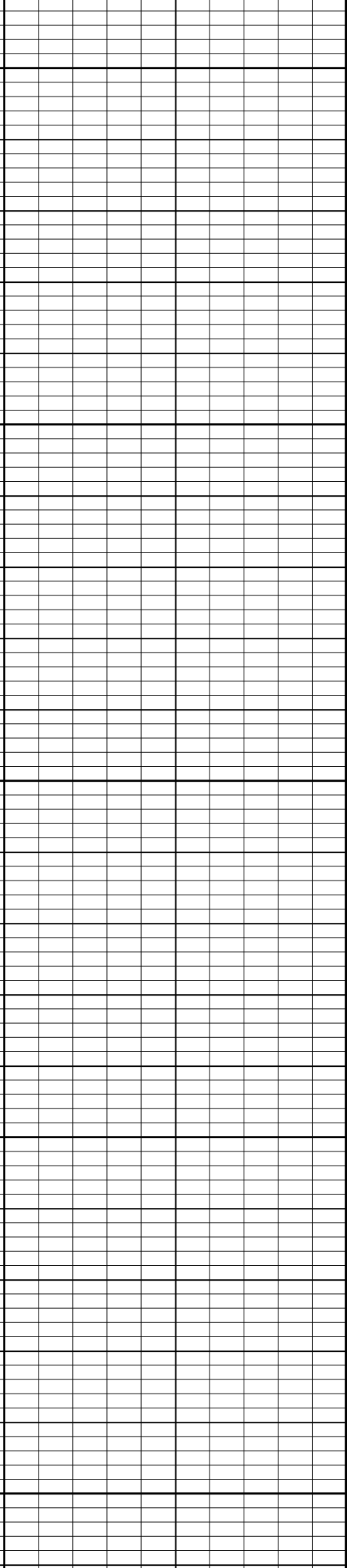
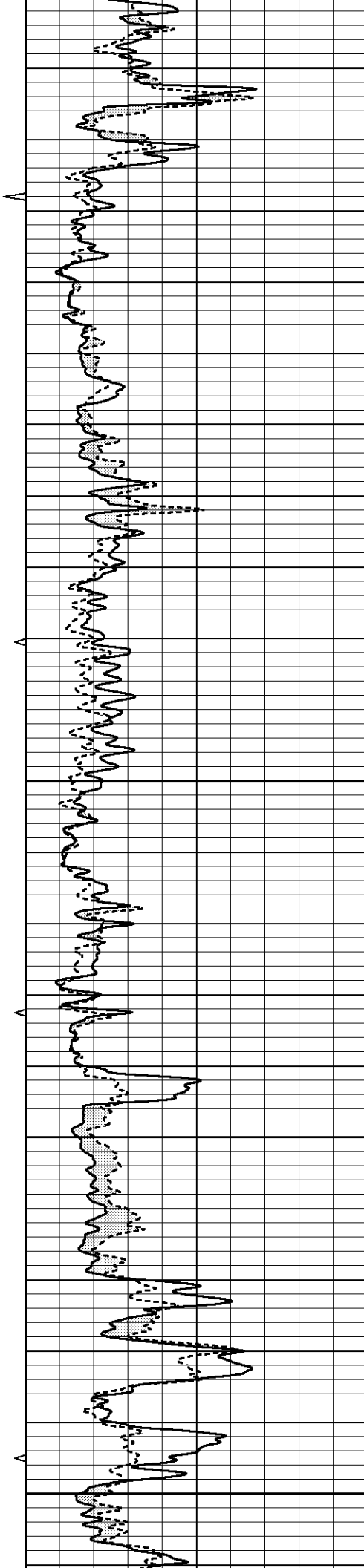
1850

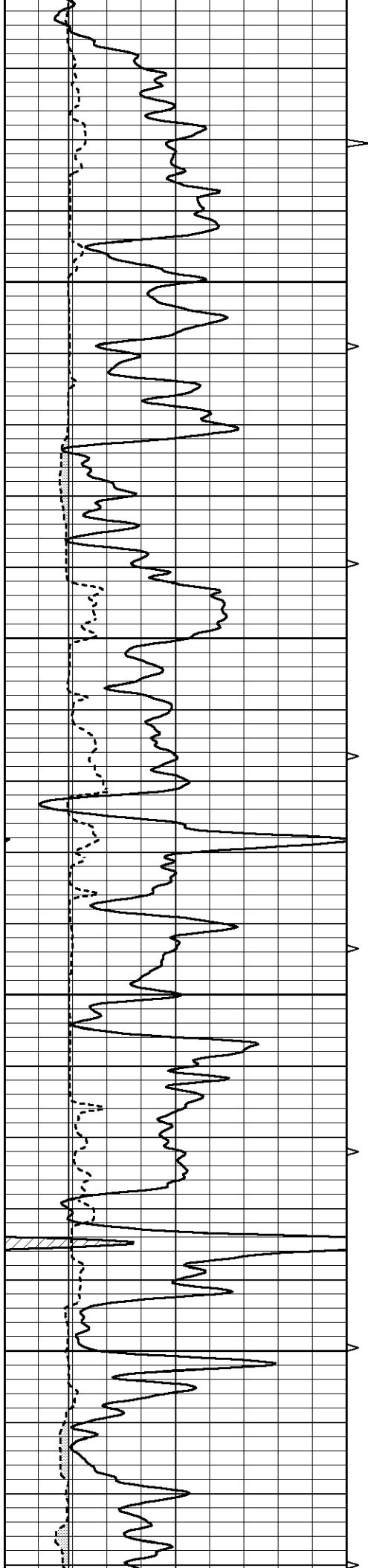
1900

1950

2000

2050



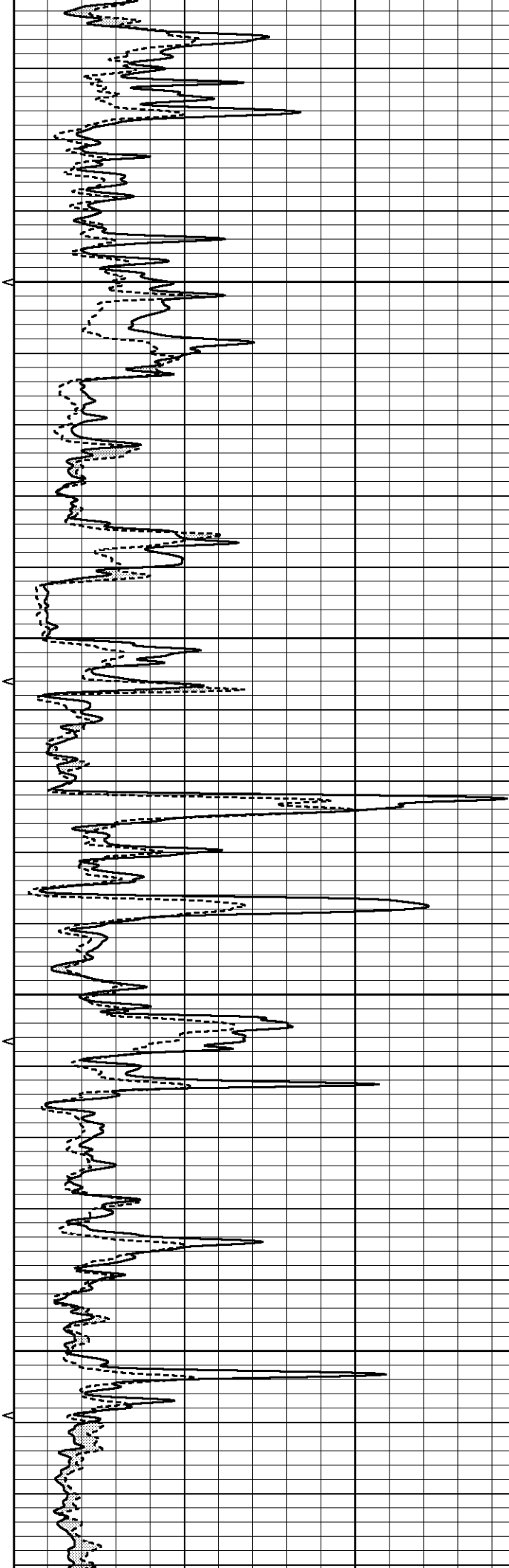


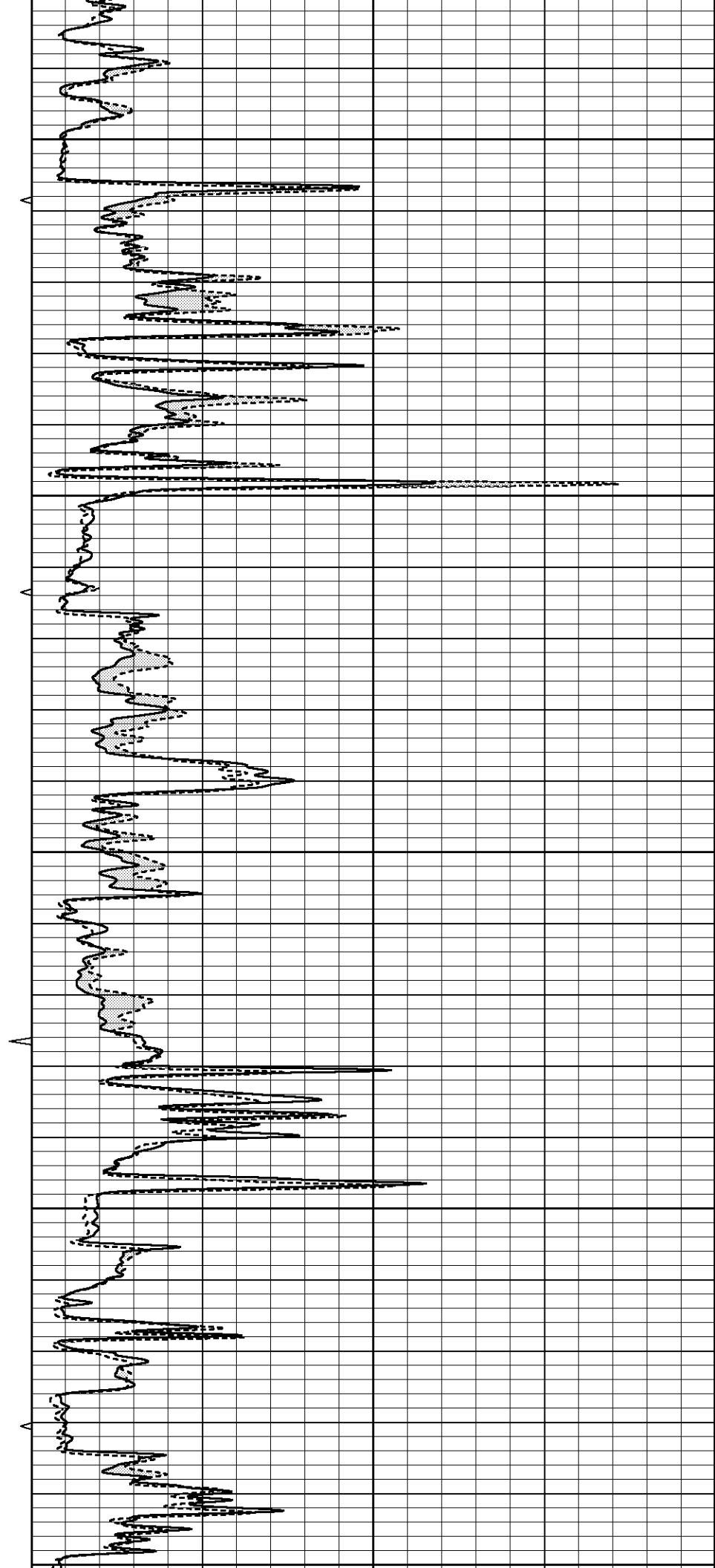
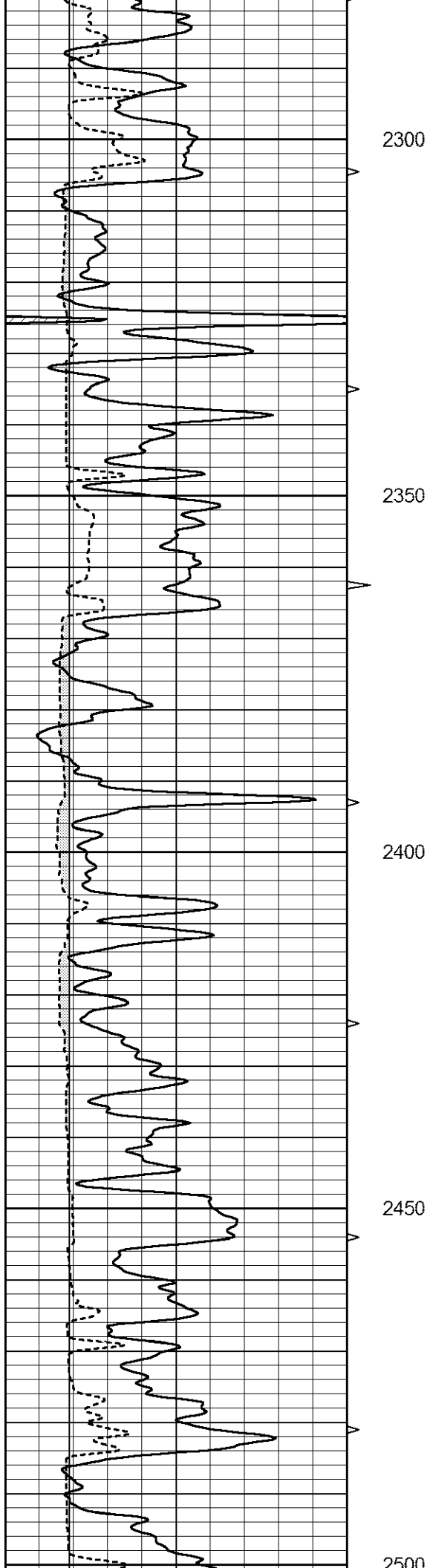
2100

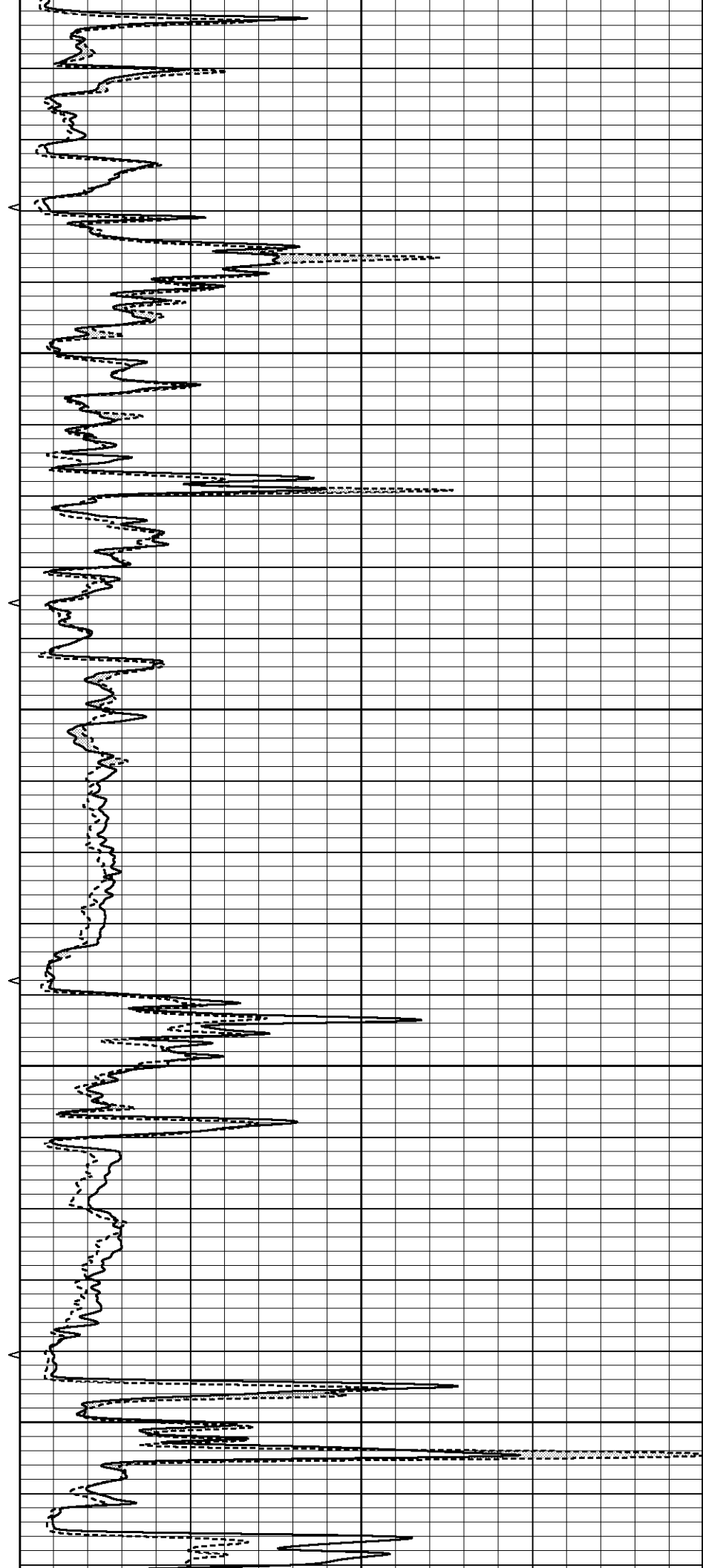
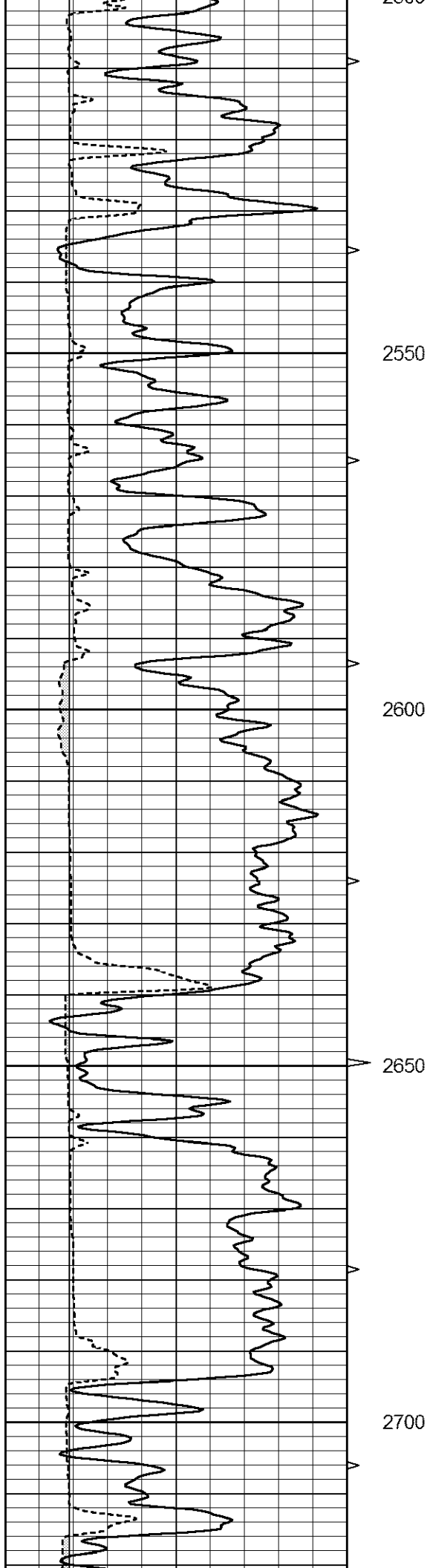
2150

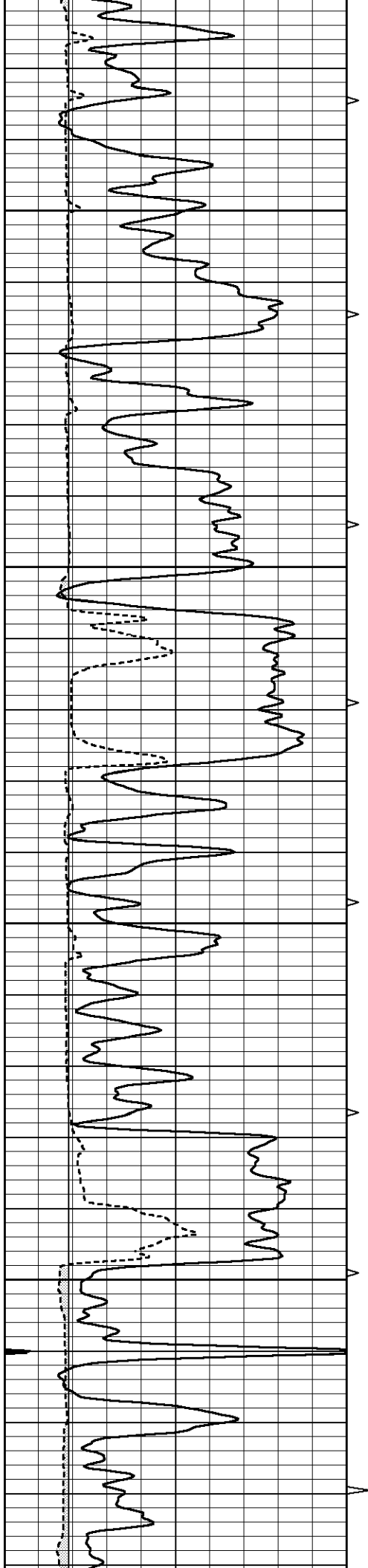
2200

2250







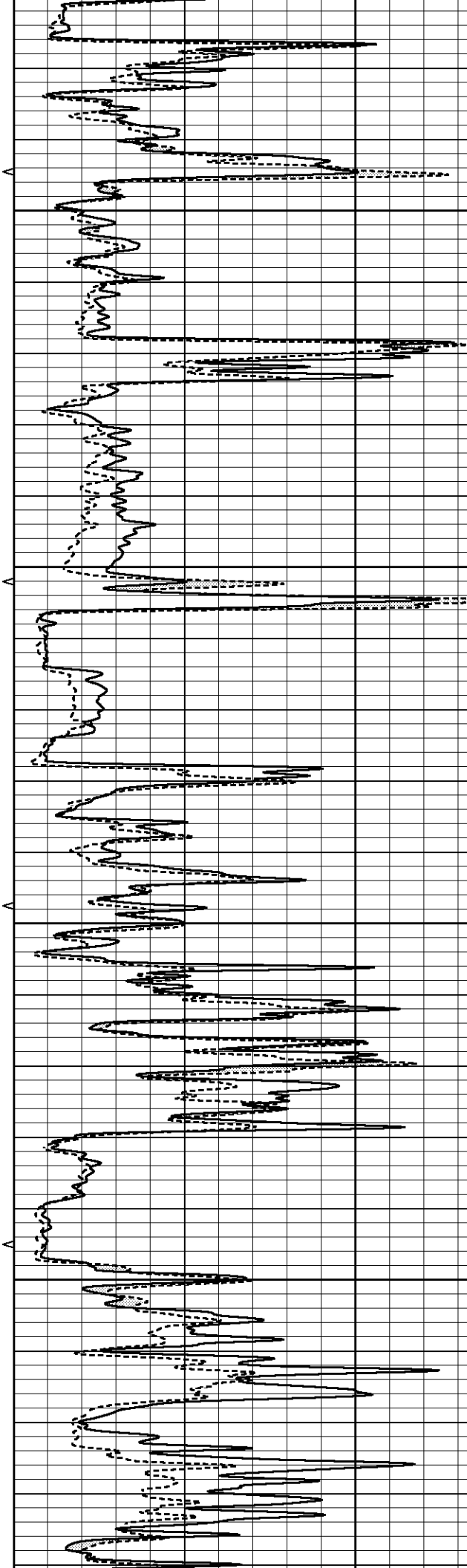


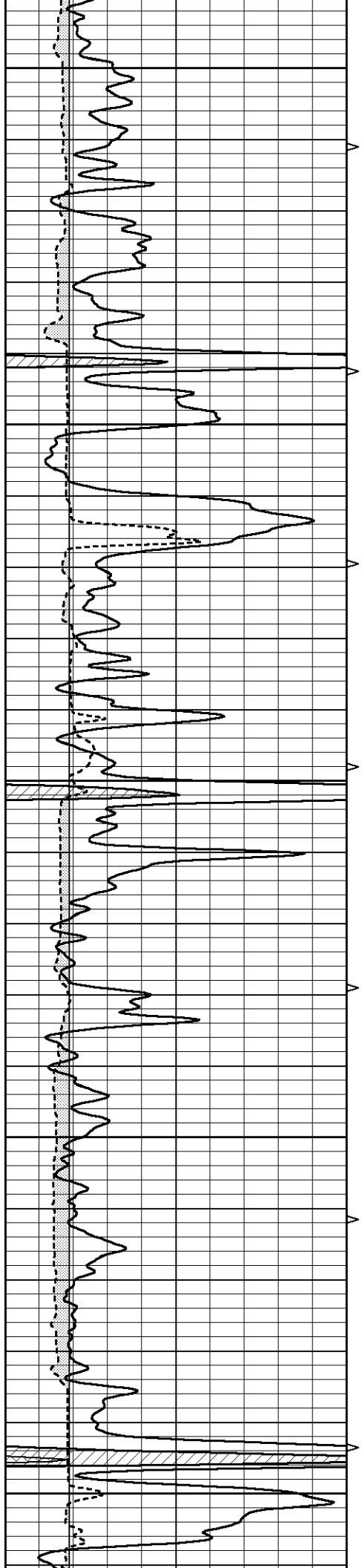
2750

2800

2850

2900





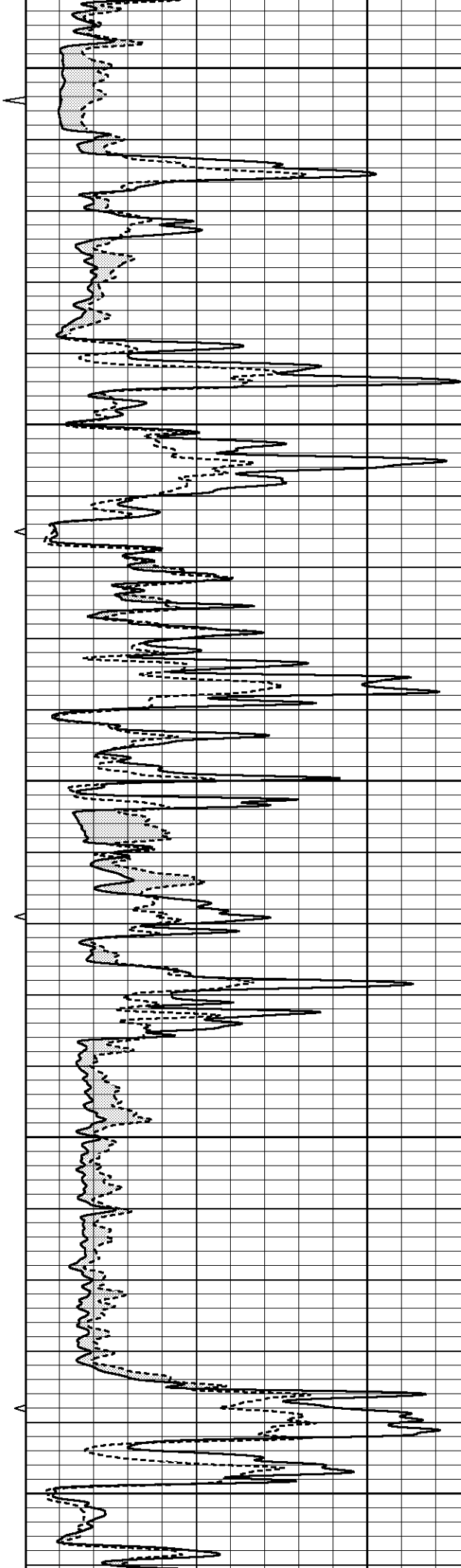
2950

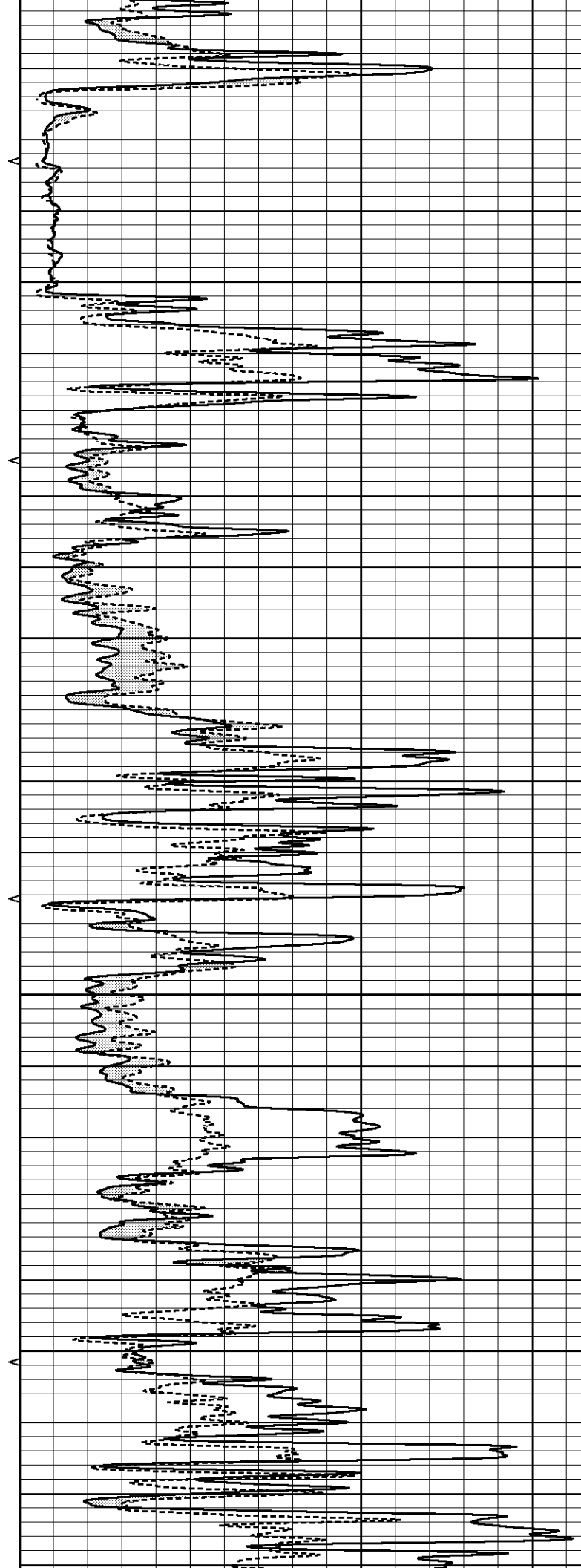
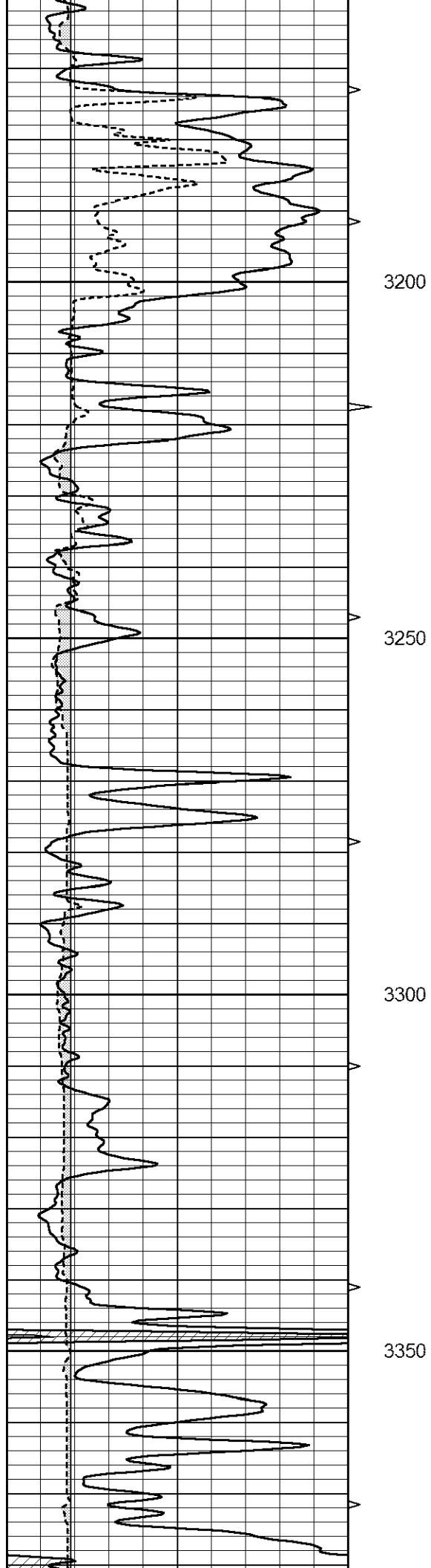
3000

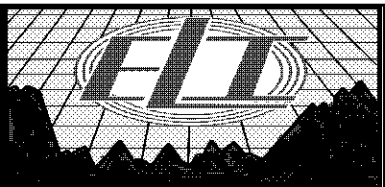
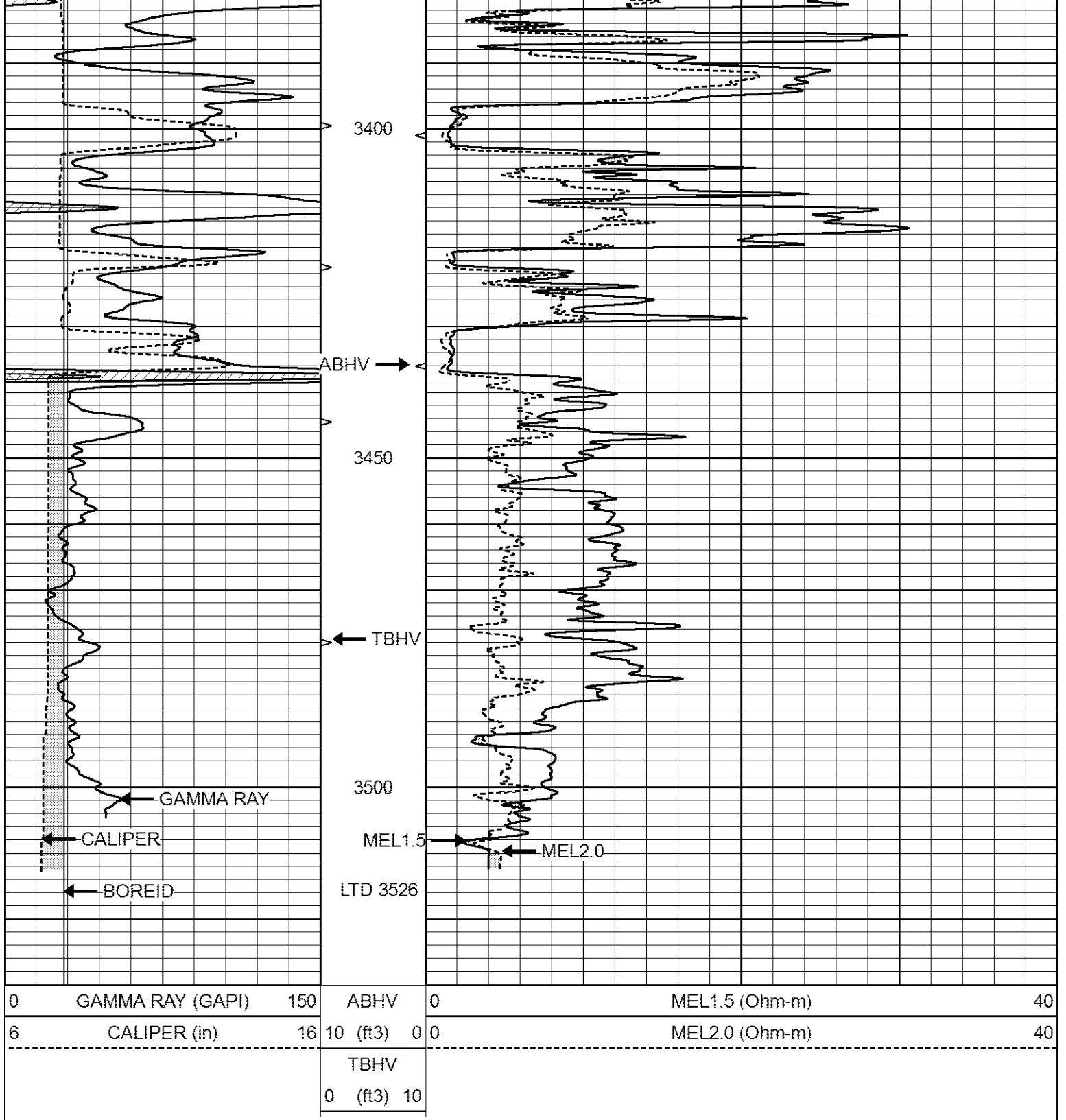
3050

3100

3150







REPEAT SECTION

Database File 2043ddn.db
 Dataset Pathname pass4RP
 Presentation Format _micro
 Dataset Creation Tue Apr 17 02:46:04 2018
 Charted by Depth in Feet scaled 1:240

0	GAMMA RAY (GAPI)	150	ABHV	0	MEL1.5 (Ohm-m)	40
---	------------------	-----	------	---	----------------	----

6 CALIPER (in) 16 10 (ft3) 0 0

MEL2.0 (Ohm-m) 40

TBHV
0 (ft3) 10

