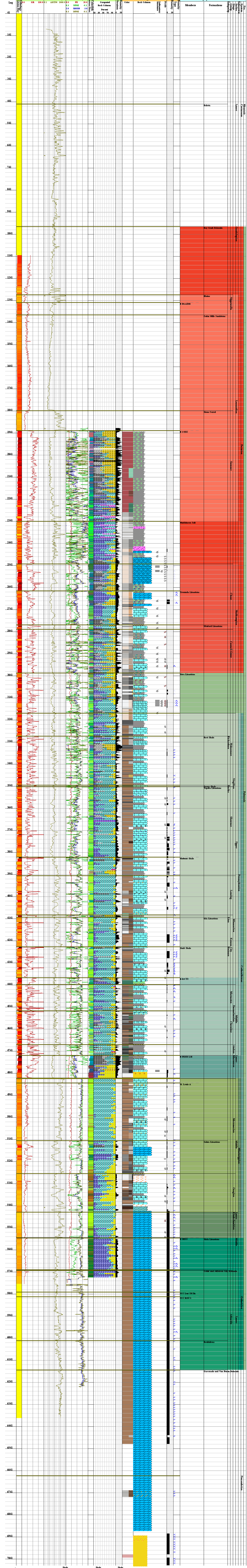


WHEATLAND ELECTRIC COOP

Lat: 37.9733462  
Long: 100.884754  
Elev: (GL)2847.8



**Primary Rock Lithology**

- Shale, Siltstone
- Sand, Sandstone
- Chert
- Limestone
- Limestone (glau)
- Dolomite
- Anhydrite

**Secondary Rock Lithology**

- Clayey, Argillaceous, clay
- Shaly, shale
- Silty, silt
- Micaceous
- Sandy, sand
- Cherty, chert
- Glauconitic, Glauconitic
- Calcareous, Carbonized
- Lignitic, lignite
- Pyritic, pyrite
- Sideritic, siderite
- oolitic
- fossiliferous
- Calcareous
- Dolomitic
- Anhydritic, anhydrite

**Fossils**

- Fresh Water (F) (F) (F)
- Brackish Water (B) (B) (B)
- Marine (M) (M) (M)
- Macrofossils (M) (M) (M)
- Trace Fossils (T) (T) (T)
- Microfossils (X) (X) (X)
- Larger Foraminifera, or fusulin (L) (L) (L)

**Sedimentary Structure Symbols**

- Lamination (L) (L) (L)
- Parallel Laminations (P) (P) (P)
- Erosional Structures (E) (E) (E)
- Oolitic, mass flow (O) (O) (O)

**Porosity Type**

- Tight (T) (T) (T)
- Intergranular (I) (I) (I)
- Interparticle (P) (P) (P)
- Interbedded (B) (B) (B)
- Intercrystalline (C) (C) (C)
- Mouldic (M) (M) (M)
- Vuggy (V) (V) (V)
- Fingert (F) (F) (F)