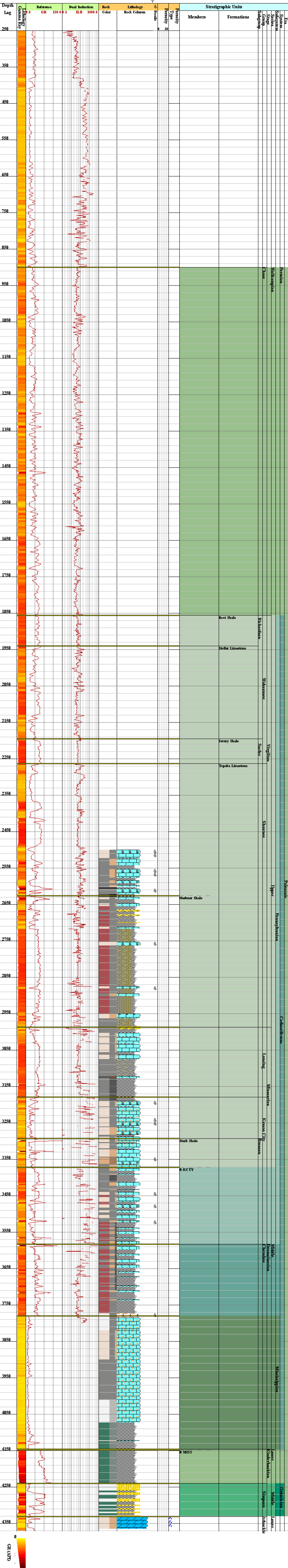




BROADWAY 'C' 1
 15-173-00369
 Lat: 37.611075
 Long: 97.668885
 Elev: (GL) 1423.0



- Primary Rock Lithology**
- Shale
 - Sand, Sandstone
 - Chert
 - Limestone
 - Dolomite
- Secondary Rock Lithology**
- Micaceous
 - Sandy, sand
 - Cherty, chert
 - oolitic
 - fossiliferous
 - Dolomitic
 - Phosphate, Phosphatic
- Fossils**
- Fresh Water (Fresh Water)
 - Brackish Water (Brackish Water)
 - Marine (Marine)
 - Macrofossils (Macrofossils)
 - Vuggy (Vuggy)
 - Few (Few)
 - Many (Many)
 - Brom (Brom)
- Porosity Type**
- Vuggy