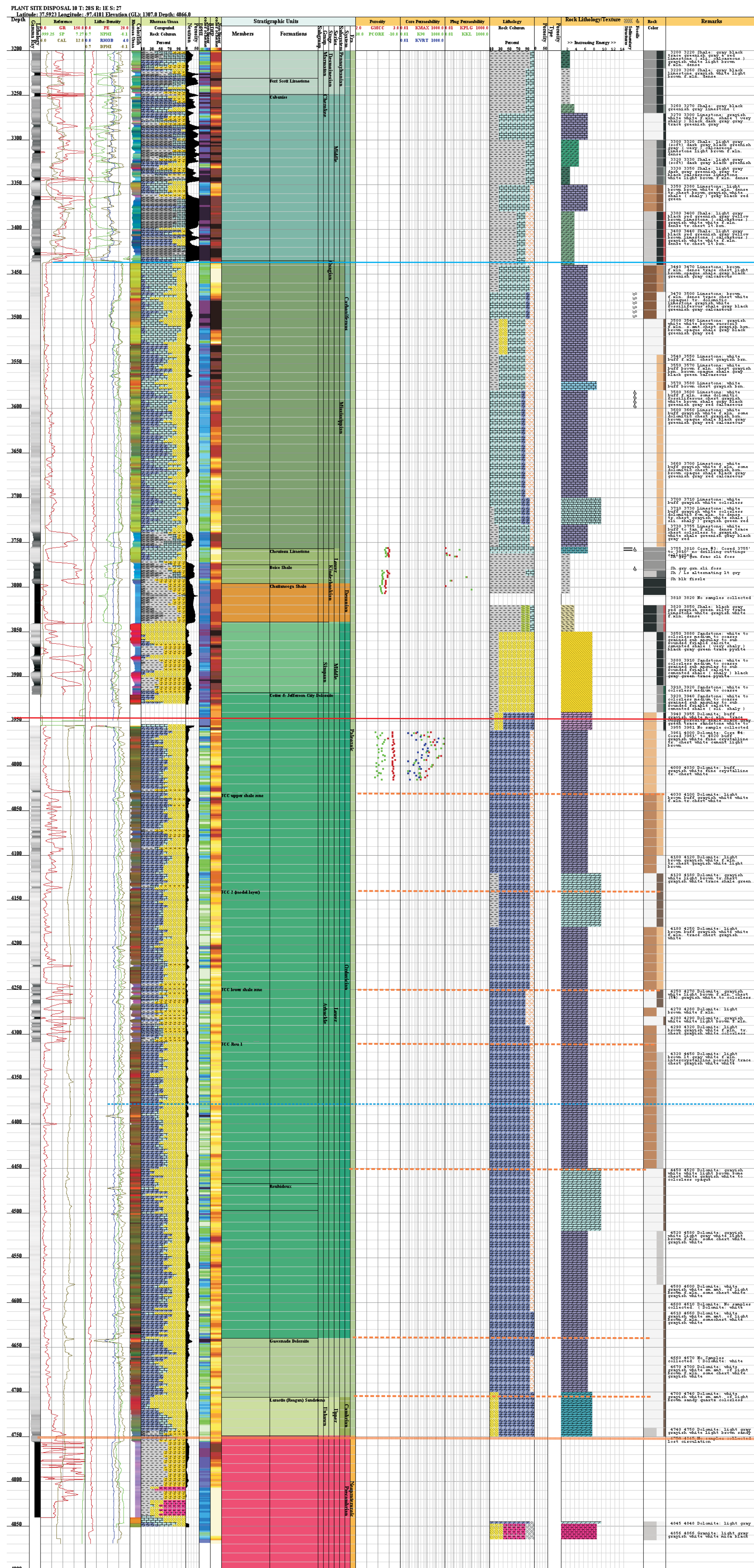
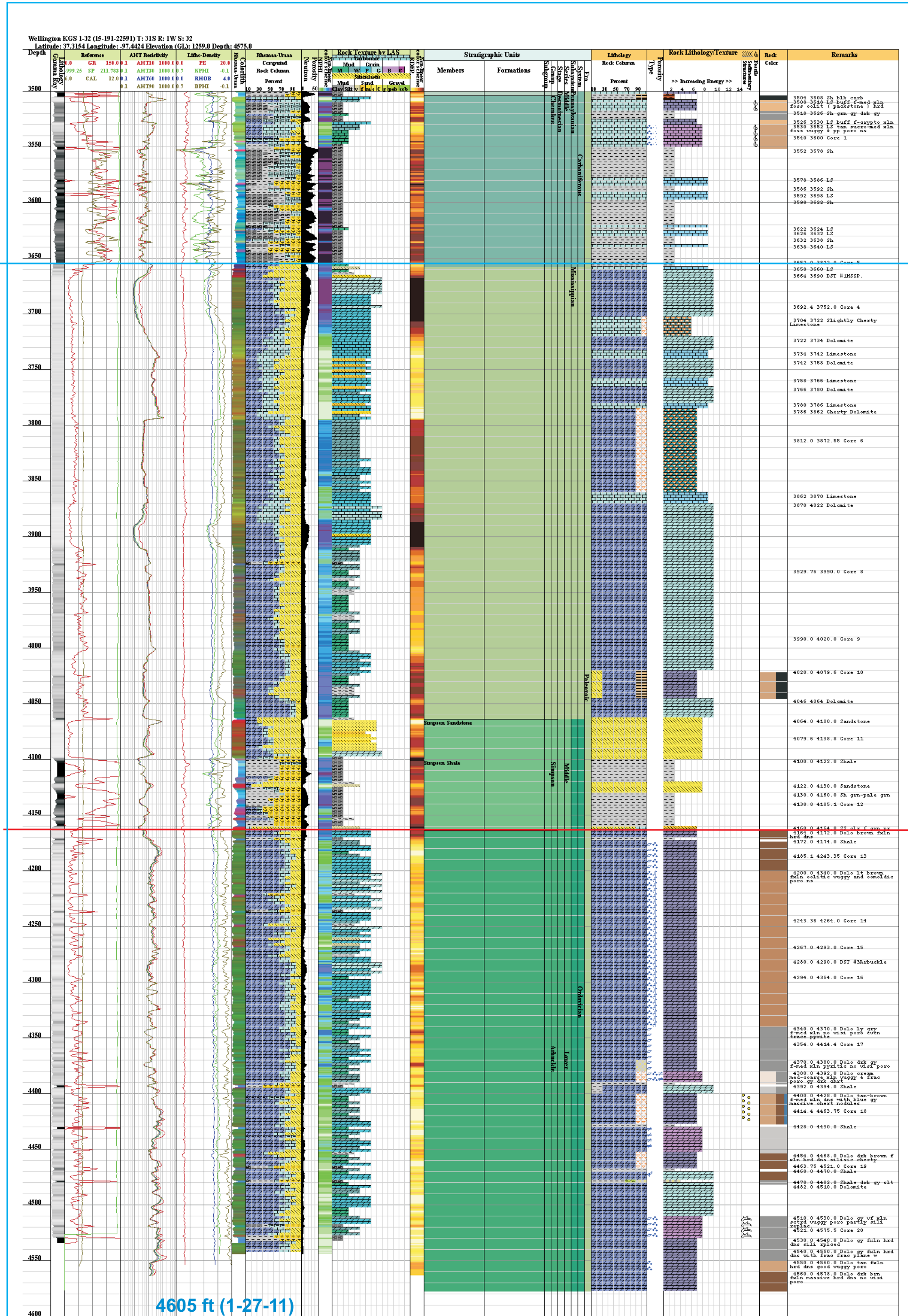


Oxy-Chem Plant Site Disposal #10  
Sec. 27-28S-1E



Berexco KGS Wellington 31-32  
Sec.32-31S-1W



370 ft (4975 ft projected depth  
from Oxy-Chem well)

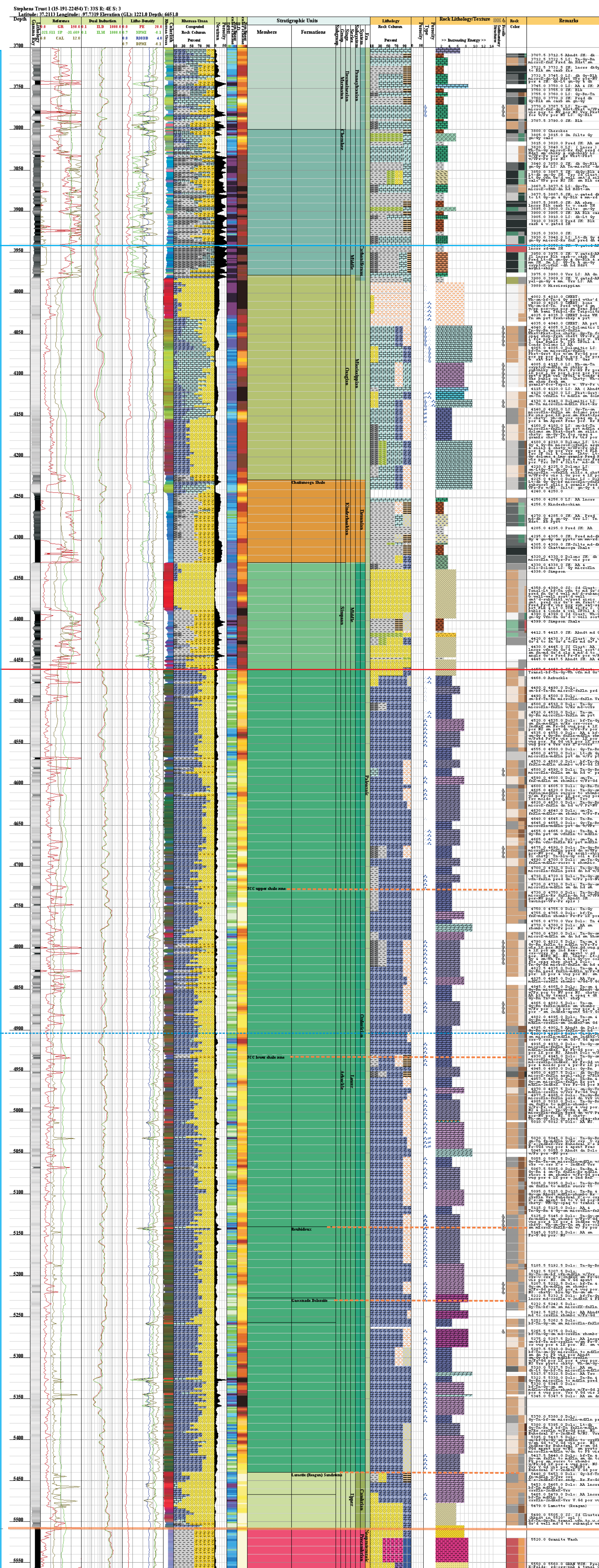
4975 ft projected depth)

604ft (5209 ft projected depth  
From Stephens Trust well)

5209 ft (projected depth)

Arbuckle isopach by Cole = 980 ft + 4163 ft = 5143 ft  
Arbuckle isopach by Gerlach = 1000 ft + 4163 ft = 5163 ft

Woolsey Stephens Trust #1  
Sec. 3-33S-R4w (Arbuckle)



Heg Whitten #3-12 SWD  
Sec. 12-33S-2W

