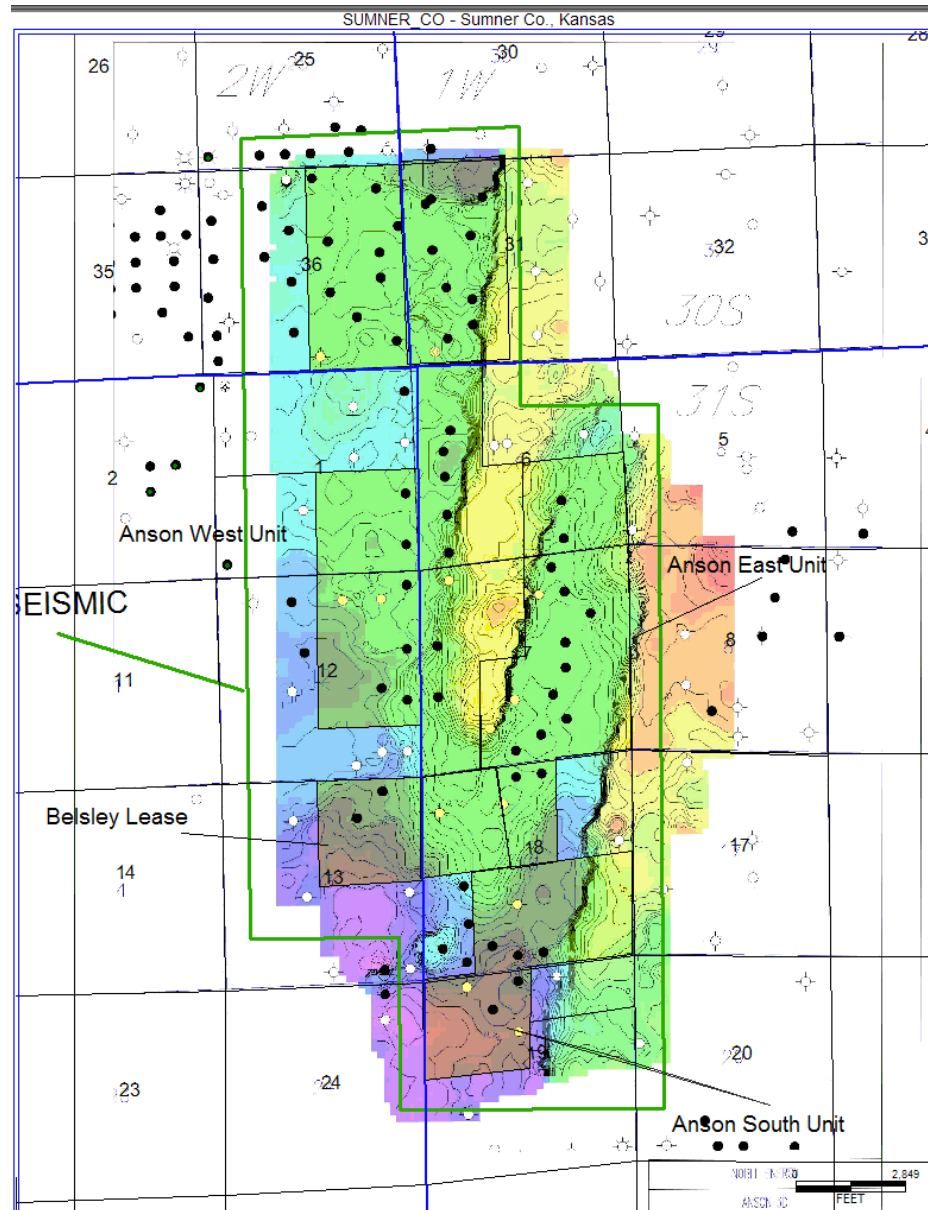
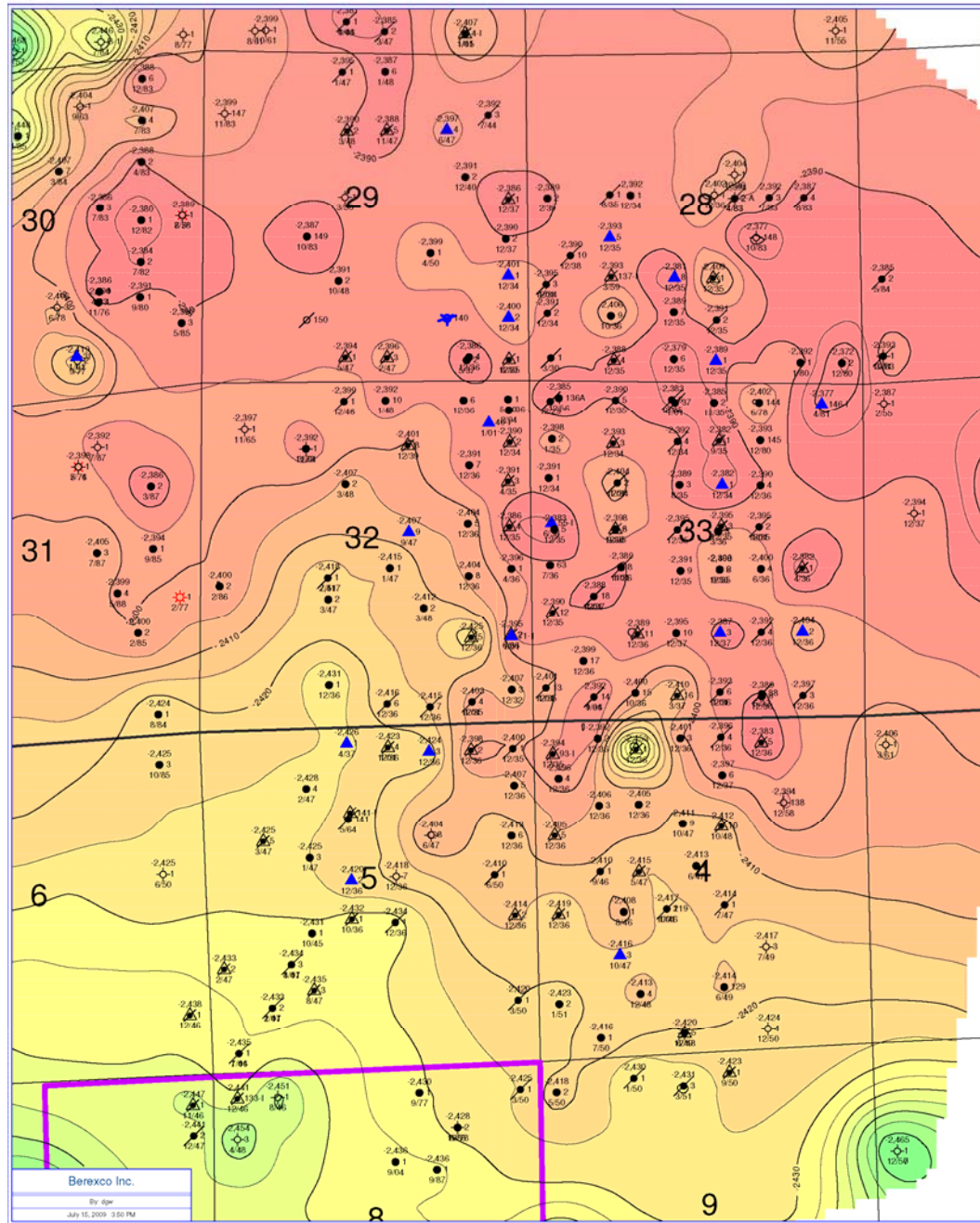


Structure map on top of the Mississippian in Wellington and Bates Field area prepared by Jason Rush. Fields are part of a subcrop play with the chat reservoir preserved in what appears to be structural blocks bounded by NE- and NW-trending lineaments. Warmer colors represent higher elevation.

Anson Bates – seismic (time/structure? From Noble)

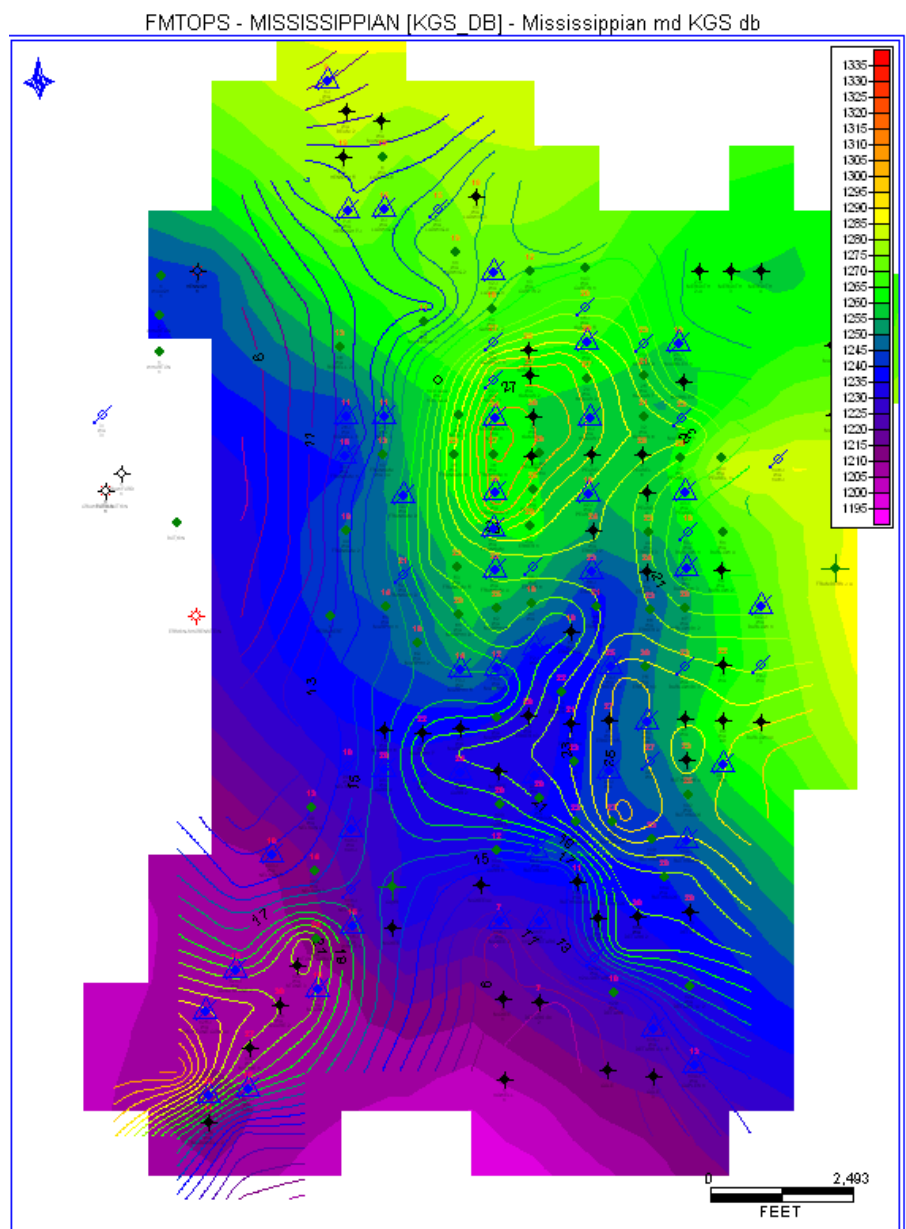
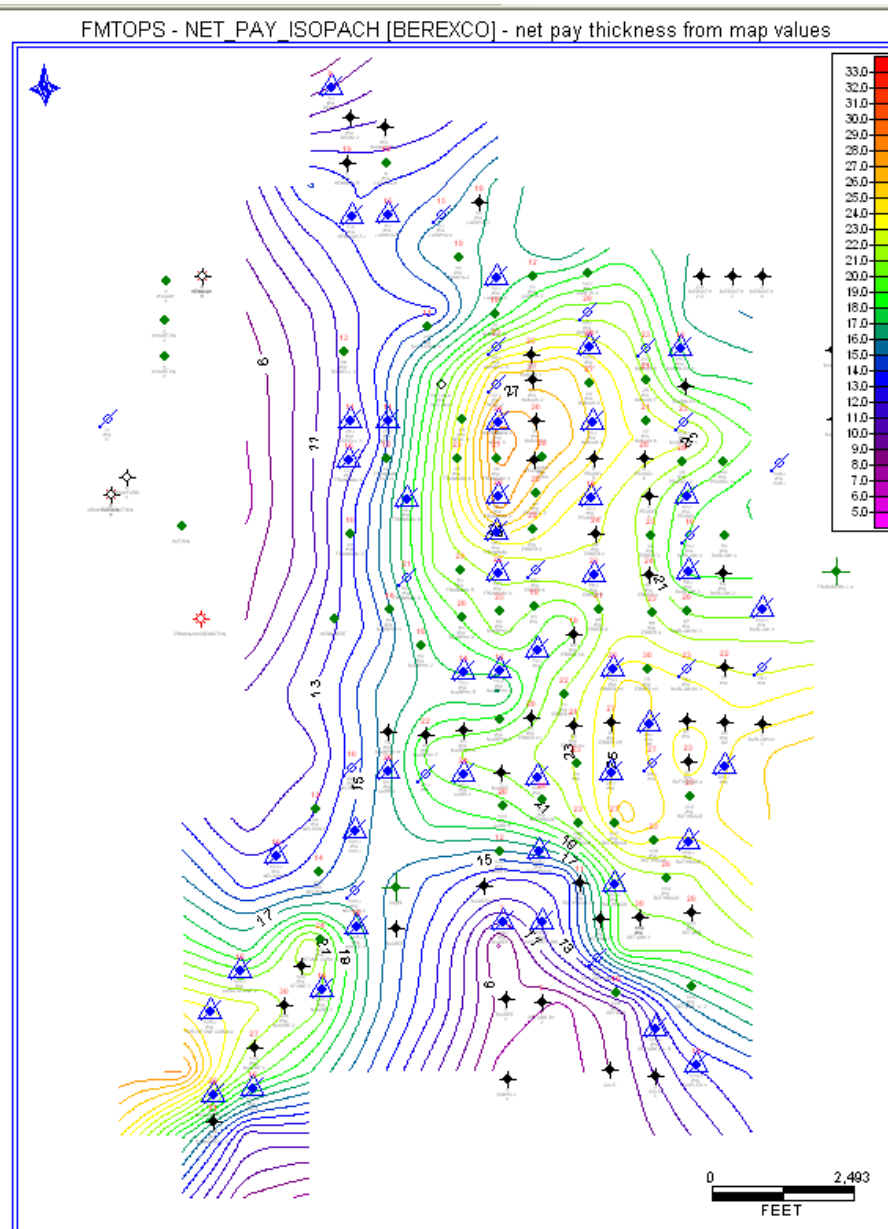




Structure map top of Mississippian
Berexco map

Approximate area for 3D seismic
acquisition

Initial Wellington mapping by Watney of Mississippian chert/dolomite oil reservoir being studied for CO₂-EOR

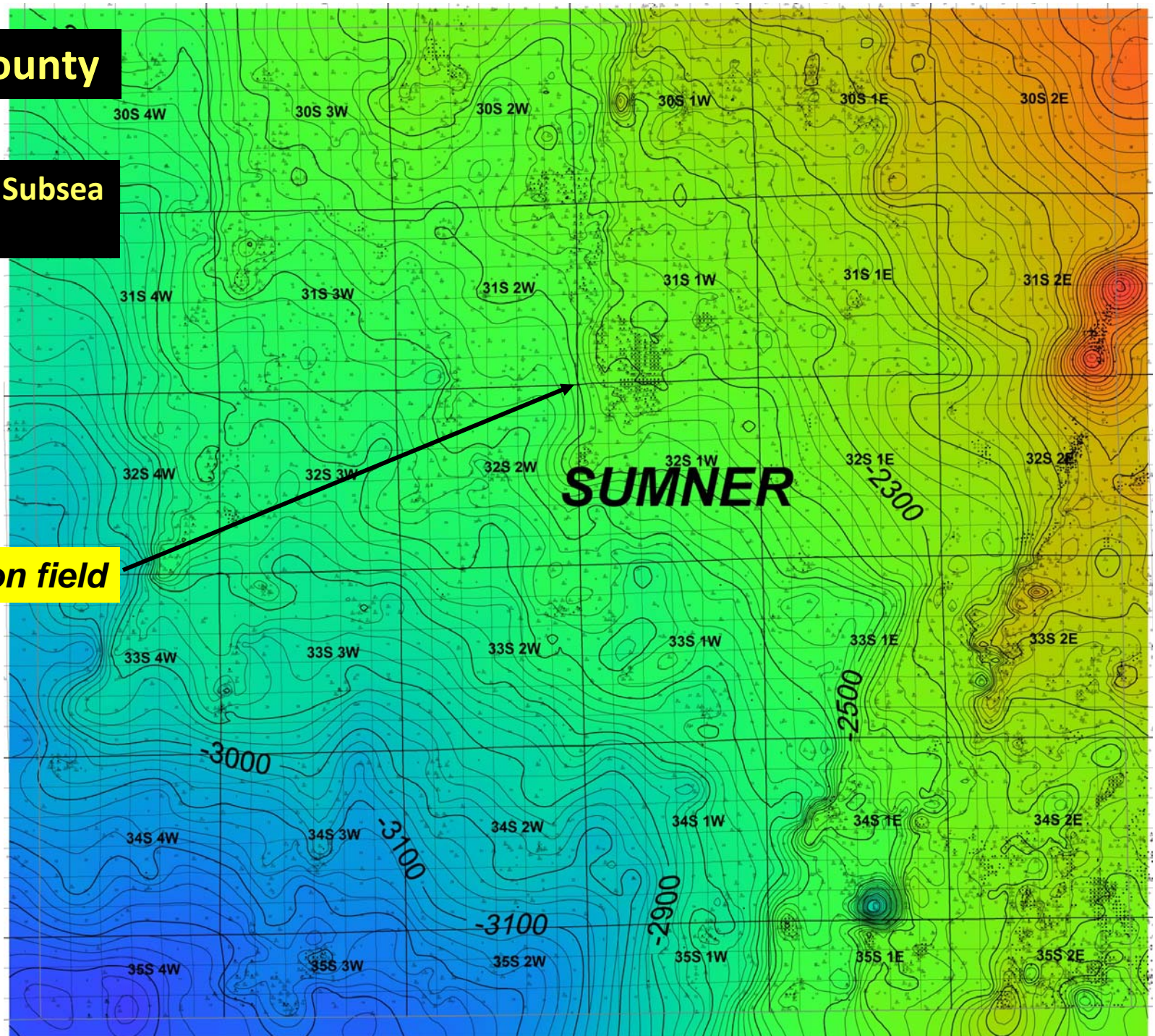


Following maps shared by P. Gerlach from
Bittersweet team during project review on April 20th
in Lawrence

Sumner County

Mississippian Subsea
25 ft C.I.

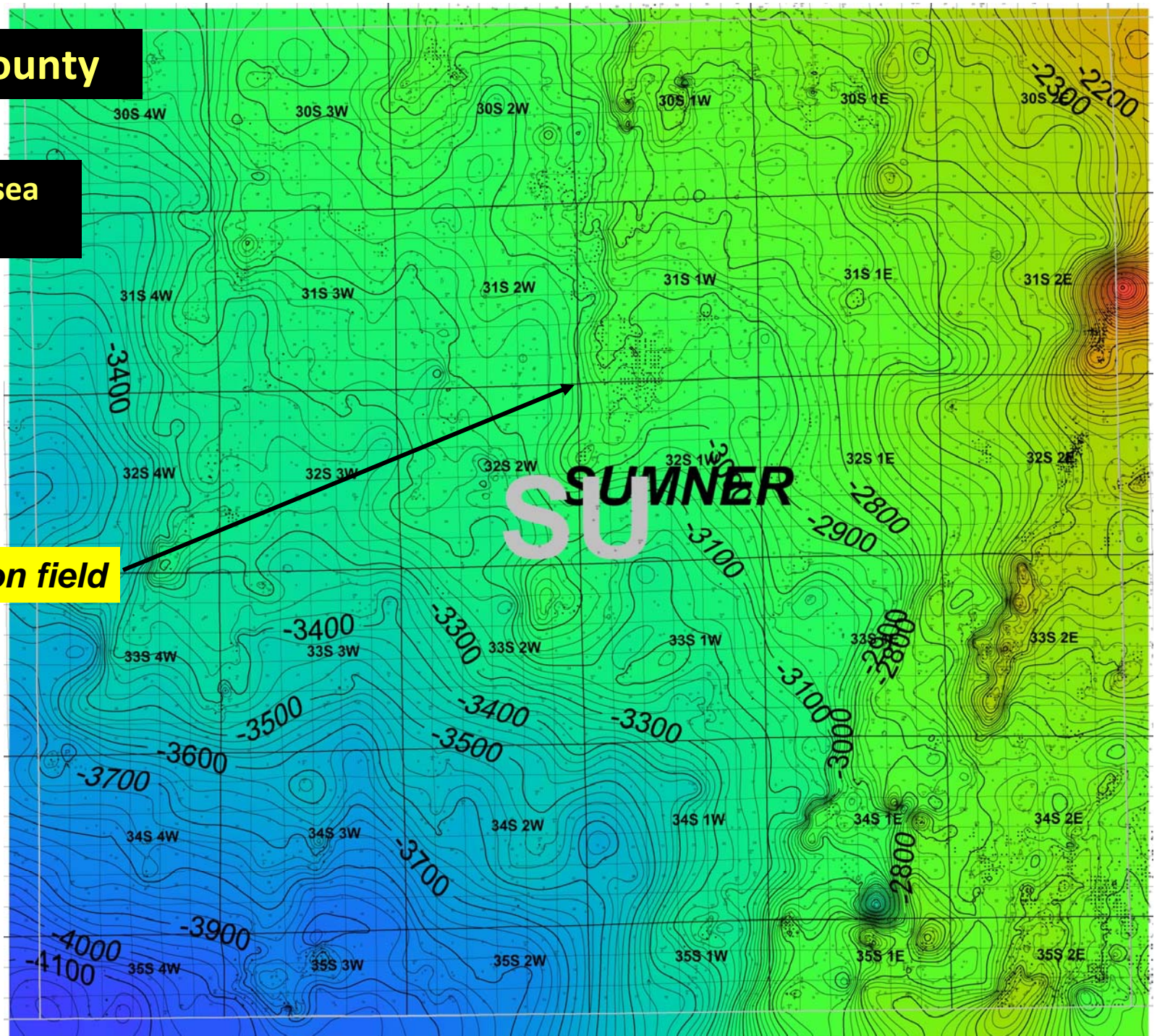
Wellington field



Sumner County

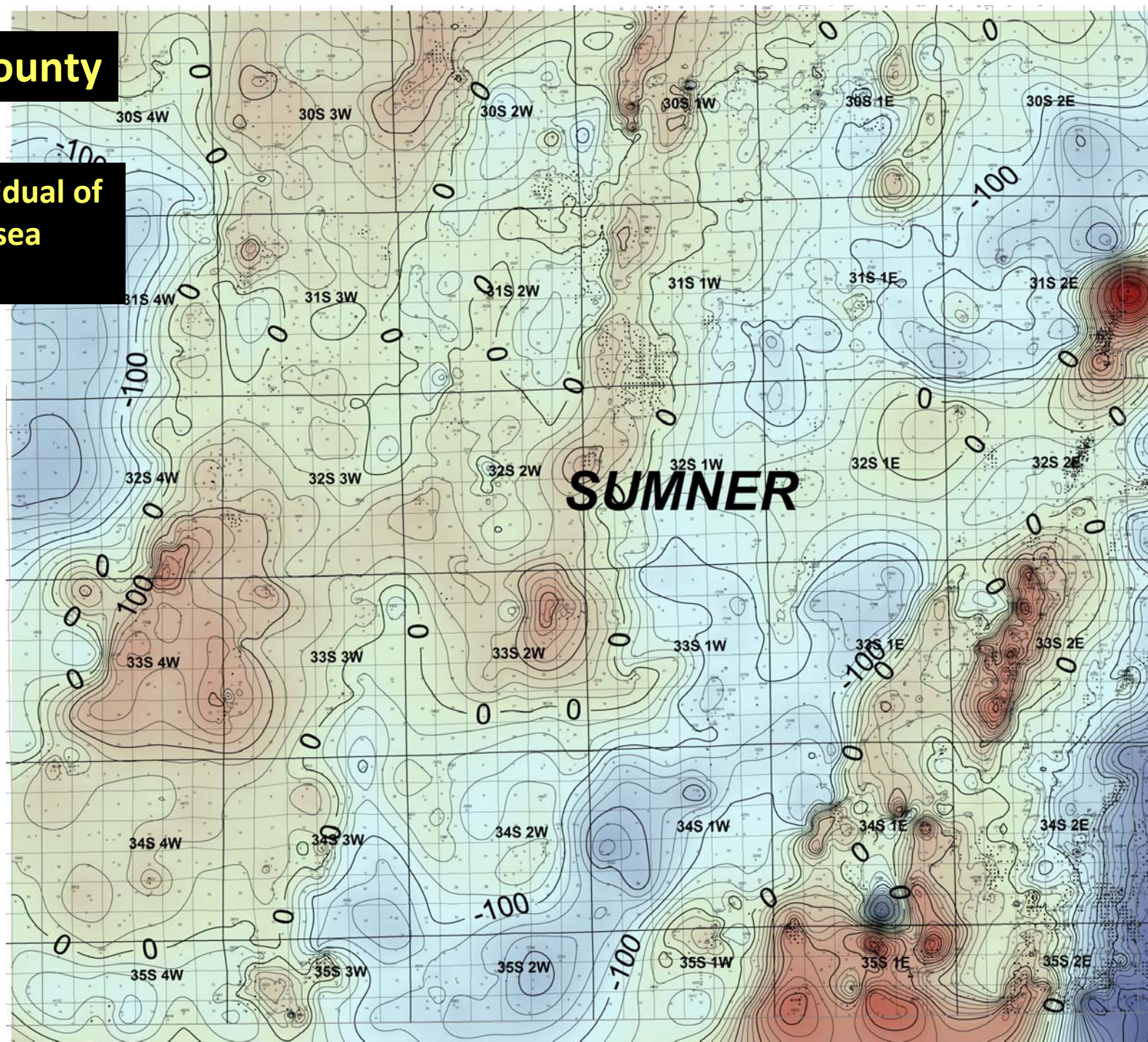
Arbuckle Subsea
25 ft C.I.

Wellington field

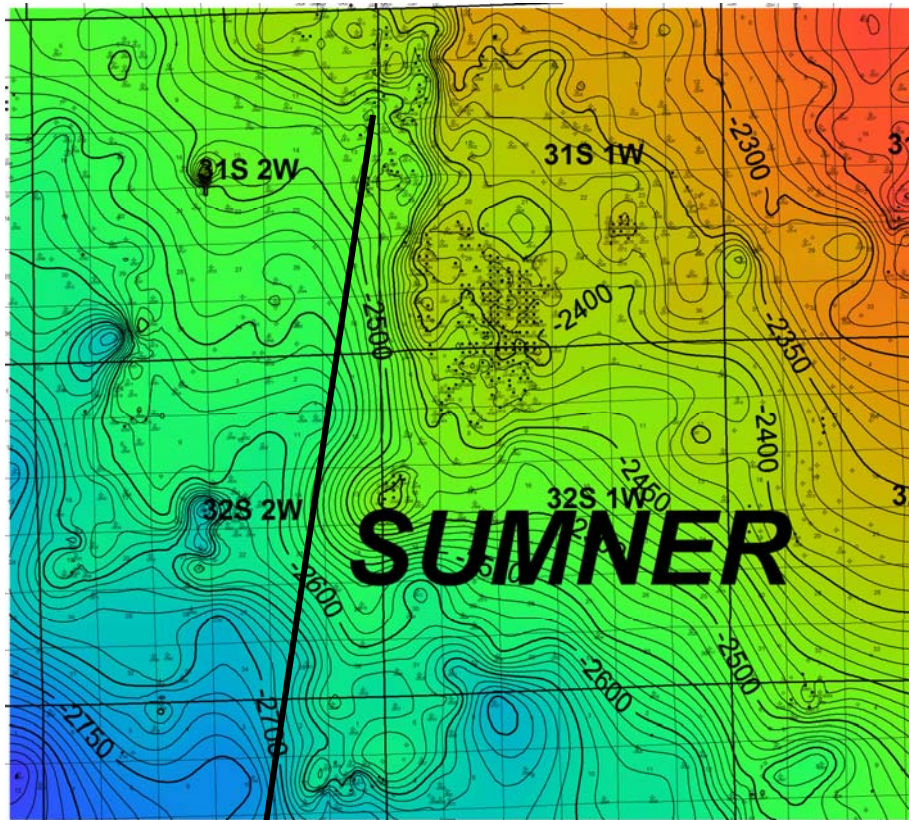


Sumner County

3rd Order Residual of
Arbuckle Subsea
25 ft C.I.

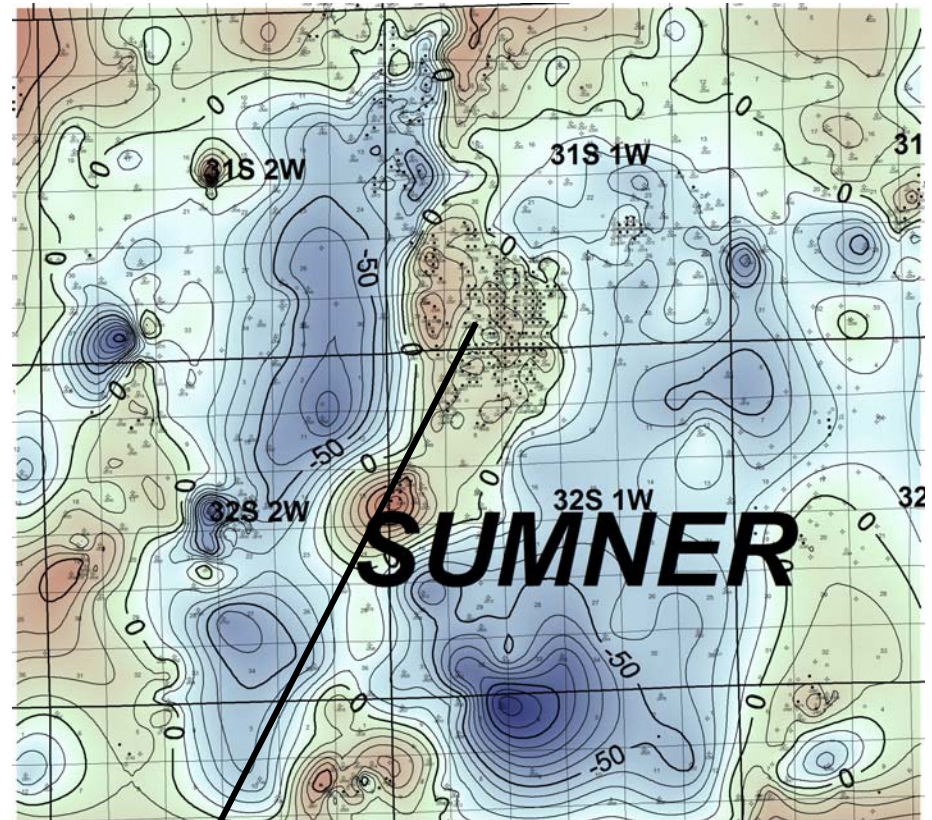


**Mississippian Subsea
25 ft C.I.**



***Southern part of
Anson-Bates field***

**3rd Order Residual of
Mississippian Subsea
25 ft C.I.**



Wellington field