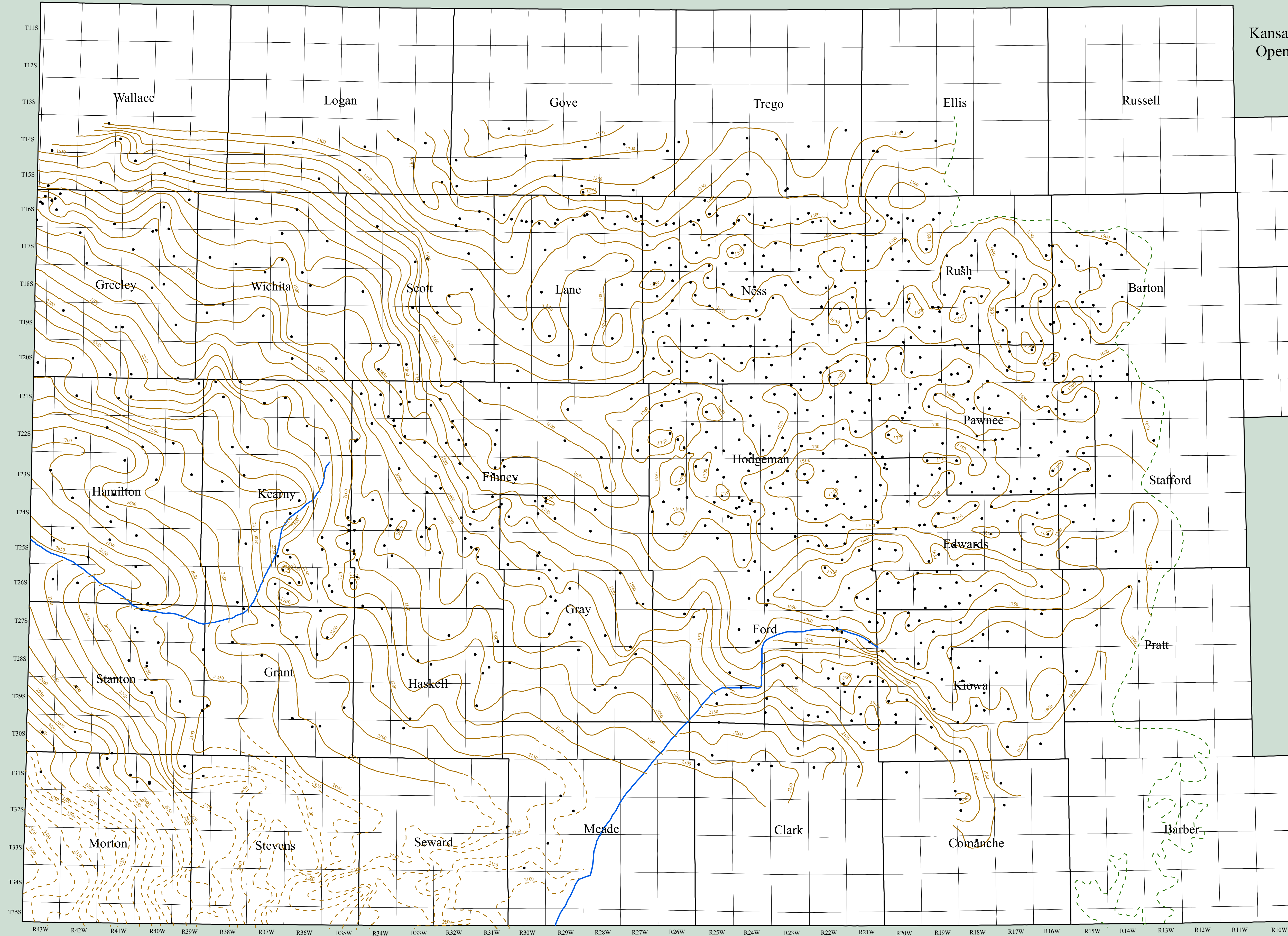


# Top Configuration of the Upper Permian-Pennsylvanian Aquitard

(Permian Strata Above the Top of the Cedar Hills Sandstone)

Kansas Geological Survey  
Open File Report 93-1A  
Plate 13

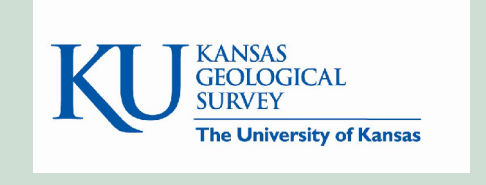


- Line of equal elevation in feet above mean sea level (contour interval = 50 feet)
- Control point elevation
- Salt dissolution/fault zone
- Eastern extent of the formation (dashed when inferred)

0 5 10 20  
Kilometers

0 5 10 20  
Miles

Scale = 1:500,000  
1 inch equals approximately 8 miles  
Lambert conformal projection with standard parallels at 34 and 44 degrees north latitude



Kansas Geological Survey  
P. Allen Macfarlane  
Janet Combes  
S. Turbek  
D.S. Kirschen  
S. Yoder

October 1993  
Updated in 2010 by John J. Woods

The Kansas Geological Survey does not guarantee this map to be free from errors or inaccuracies and disclaims any responsibility or liability for interpretations from the map or decisions based thereon.