

October Geofest

October • Lawrence Kansas

Kansas Geological Society Meeting hosted by Kansas Geological Survey

Tour the Survey and attend a technical program provided by the Kansas Geological Survey

- Value-added sequestration and enhanced coalbed natural gas production opportunities.
Timothy R. Carr
- Niobrara, petrophysics of a tight gas reservoir in Kansas.
Alan P. Byrnes
- Geologic history of Kansas: stratigraphic succession, a new program overview.
W. Lynn Watney
- Seismic monitoring of underground CO₂ plume, Russell, Kansas.
Richard D. Miller
- Kansas Geological Survey research on water-resource issues of Kansas.
Donald O. Whittemore
- Ground-water resources and management issues of bedrock aquifers in Kansas.
P. Allen Macfarlane
- Studies in limestone aggregate.
Evan K. Franseen

PROVIDED:

- Motorcoach transportation from Wichita to/from Lawrence
- Lunch at the Survey
- CEU credits (four) validated by Kansas Geological Society

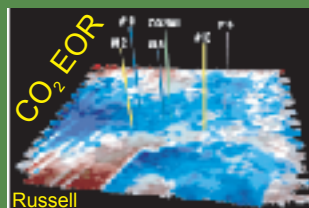
SCHEDULE:

7:30 am Depart by motorcoach from Sam's Club parking lot, 3415 N Rock Road
10:00 am Arrive at Kansas Geological Survey, Lawrence
4:45 pm "Wind down" session at Lawrence establishment (TBD)
6:30 pm Depart Lawrence
9:00 pm Arrive in Wichita

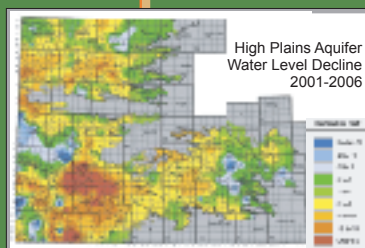
NO CHARGE

RESERVATIONS REQUIRED by October 23, even those that provide own transportation
LIMITED MOTORCOACH SEATING, register early

SIGN UP at the Society library, call 316-265-8676, or email manager@kgslibrary.com



Water Resource Issues



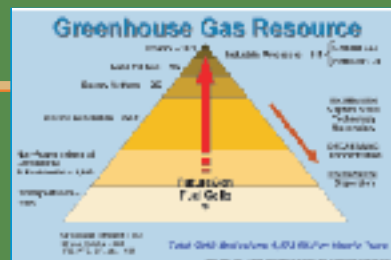
Limestone Aggregate



Bedrock Aquifers

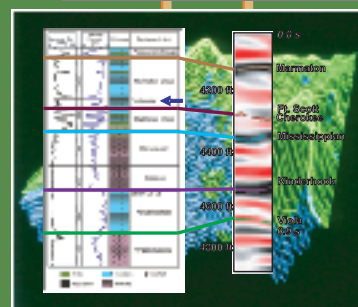
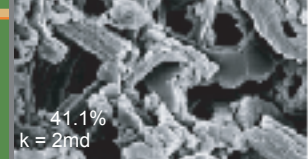


Value Added



Sequestration

Niobrara Chalk



Succession