
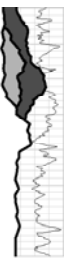


Plot Name: KGS_Phase2_results_-08-13
 Plot File: KGS_Phase2_results_-08-13.PLT
 Well File: Uinta_Mapco NB 11-17F River Bend Unit1a
 Time: 09:40 AM
 Date: Thu, Aug 21, 2008
 Log analyst:  The Discovery Group, Inc.



DIGITAL
FORMATION
LESA for Windows 7.0

County:	UINTAH
Field:	RIVERBEND UNIT
Location:	S17 T10S R20E
Well:	MAPCO R.B.U. "F" #11-17
Company:	MAPCO PROD CO

Sect:	Twp:	Rng:	Loc:
			Location: S17T10S R20E Company: MAPCO PROD CO Well: MAPCO R.B.U. "F" #11-17 File: Uinta, Mapco NB 11-17F River Bend Unit1a Field: RIVERBEND UNIT County: UINTAH State: UTAH APL: 430473058400 Country: UNITED STAT
			DRESSER ATLAS

Permanent datum	GL	@	0.0000	F	F
Log measured from	KB		above perm datum		F
Drlg measured from	KB				F
				Elev.: KB: 5118.0000	
				DF: 5117.0000	
				GL: 0.0000	

Date		30-NOV-1979						
Run No.								
Depth Driller		8700						
Depth Logger		8633						
Bottom Logged Interval		8533.0000						
Top Logged Interval		3762						
Casing Driller		@ 8.625" @ 3771'	@		@		@	
Casing Logger		3762						
Bit Size		7.875	IN					
Type Fluid in Hole		KOLBRINE						
Density	Viscosity	11.4	36					
pH	Fluid Loss	11.5						
Source of Sample		FLOWLINE						

Recorded By	Witnesseed By	BANNERIKIJEL	TORGERSON/PERESSINI				
	Equipment Location	RSVT					
	Max. Rec. Temp.	159					
	Time	Circulation Stopped	25				
	Tool Last on Bottom						
Source: Rmtf	Rmtf @ Meas. Temp.	.188	@ 52	@			@
	Rmtf @ Meas. Temp.	0.19	@ 54	@			@
	Rmtf @ Meas. Temp.	.273	@ 52	@			@
	Rmtf @ Meas. Temp.	.273	@ 52	@			@
Rmtf @ BHT	Rmtf @ BHT	MEAS	MEAS				
	Rmtf @ BHT	@ 159	@				@
	Rmtf @ BHT	@ 159	@				@
	Rmtf @ BHT	@ 159	@				@

Disclaimer: Interpretations from electrical or other measurements in wellbores are opinions based upon inferences as to tool response in the underground formation. Neither Digital Formation nor The Discovery Group Inc. guarantee the accuracy or correctness of any interpretation made using the LESA for Windows software. Consequently, neither company shall be liable or responsible for any loss or damages incurred as a result.

