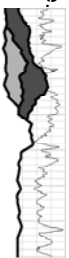


Plot Name:	KGS_Phase2_results_-08-13
Plot File:	KGS_Phase2_results_-08-13.PLT
Well File:	SandWash_Cockrell 1-791-2613 Craig Dome
Time:	09:32 AM
Date:	Thu, Aug 21, 2008
Log analyst:	



DIGITAL
FORMATION
LESA for Windows 7.0

County:	
Field:	
Location:	
Well:	1-791-2613 CRAIG DOME
Company:	

Company:	
Well:	1-791-2613 CRAIG DOME
File:	SandWash_Cockrell 1-791-2613 Craig Dome.
Field:	
County:	State:
API:	05081067240000
County:	

Location:	

Sect:	Twp:	Rng:
-------	------	------

Permanent datum Log measured from D/Hg measured from	@ above perm datum	Elev.: KB: 0.0000 DF: GL:	F
--	---------------------------	---------------------------------	---

Date				
Run No.				
Depth Driller				
Depth Logger	4085			
Bottom Logged Interval	4095.0000			
Top Logged Interval	0.0000			
Casing Driller		@		@
Casing Logger			@	
Bit Size	7.875	IN		
Type Fluid in Hole				

Density	Viscosity	9.5					
pH	Fluid Loss						
Source of Sample							
Rm @ Meas. Temp.		@		@		@	
Rmf @ Meas. Temp.	3	@ 76		@		@	
Rmc @ Meas. Temp.		@		@		@	
Source: Rmf	Rmc						
Rm @ BHT	Rmf @ BHT	@		@		@	
Circulation Stopped							
Tool Last on Bottom							
Max. Rec. Temp.							
Equipment Location							
Recorded By							
Witnessed By							

Disclaimer: Interpretations from electrical or other measurements in wellbores are opinions based upon inferences as to tool response in the underground formation. Neither Digital Formation nor The Discovery Group Inc. guarantee the accuracy or correctness of any interpretation made using the LESA for Windows software. Consequently, neither company shall be liable or responsible for any loss or damages incurred as a result.

