

**Client: Kansas Geological Survey
DOE Mesaverde Petrophysics Project**

Operator: Bill Barrett Corporation
Location: NESE sec. 3, T7S-R9
Formation: Ohio Creek, Williams L.

Formation: Ohio Creek, Williams For

Core depth: 2800-2860' (QC), 3539-6197' (WF), 61

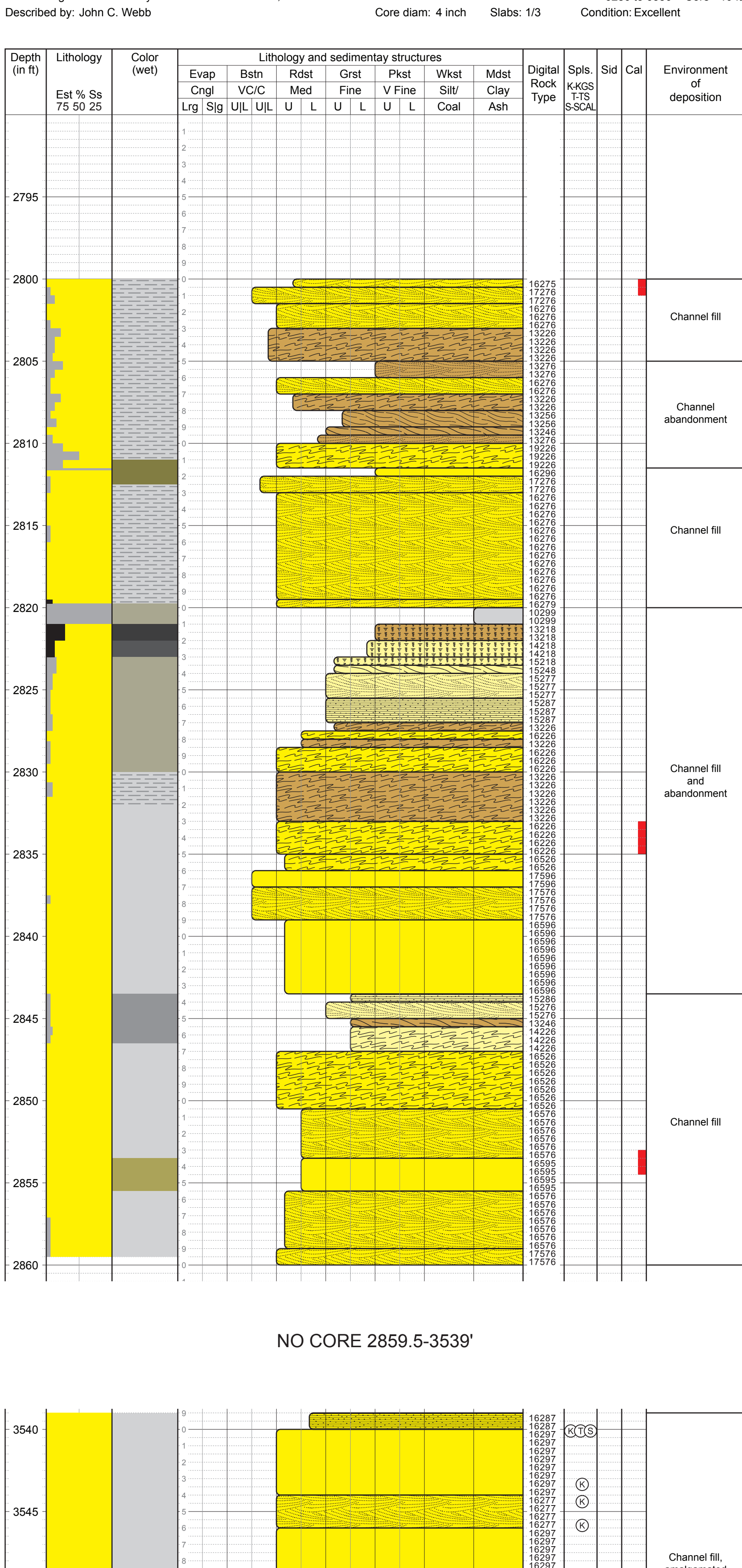
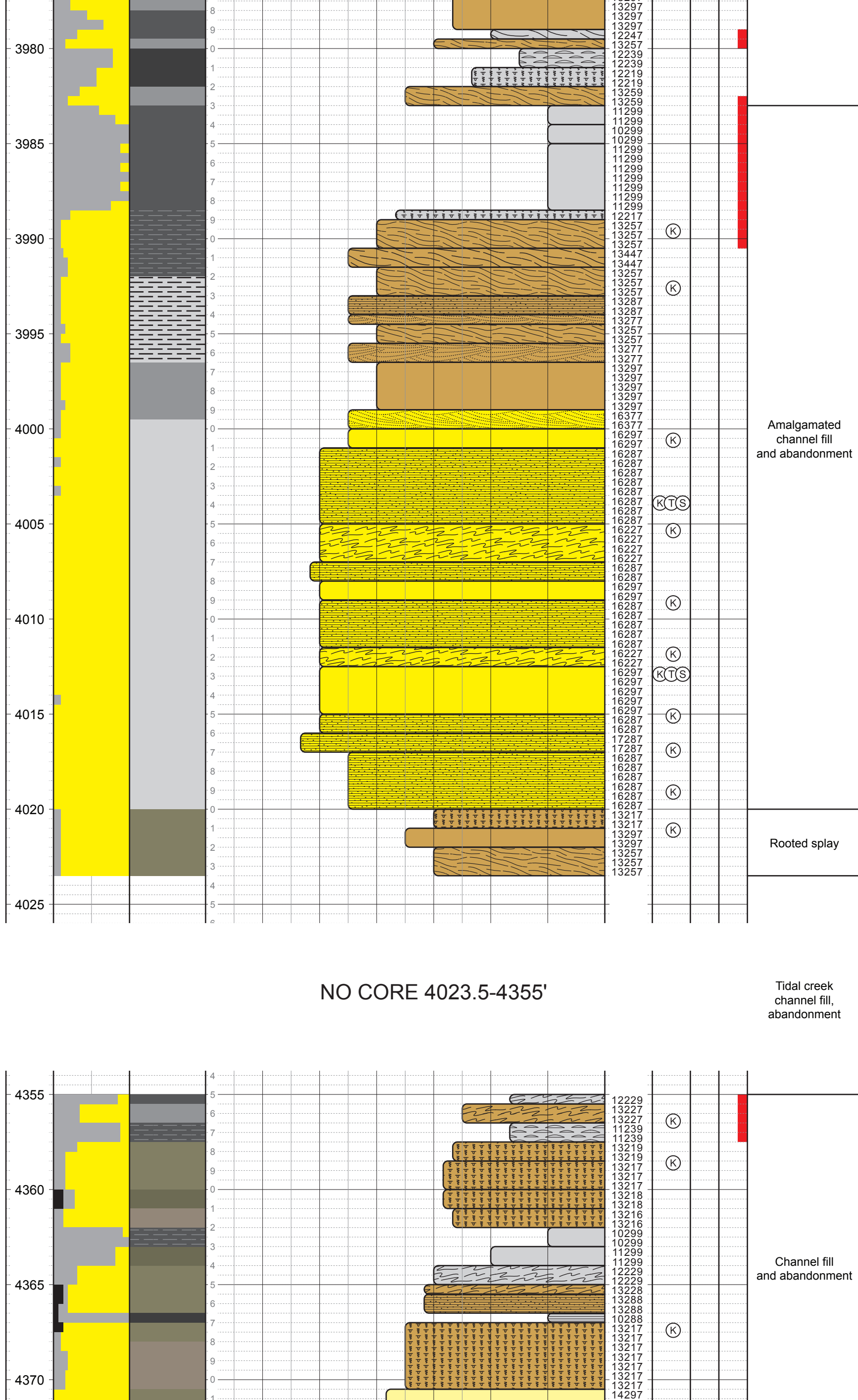
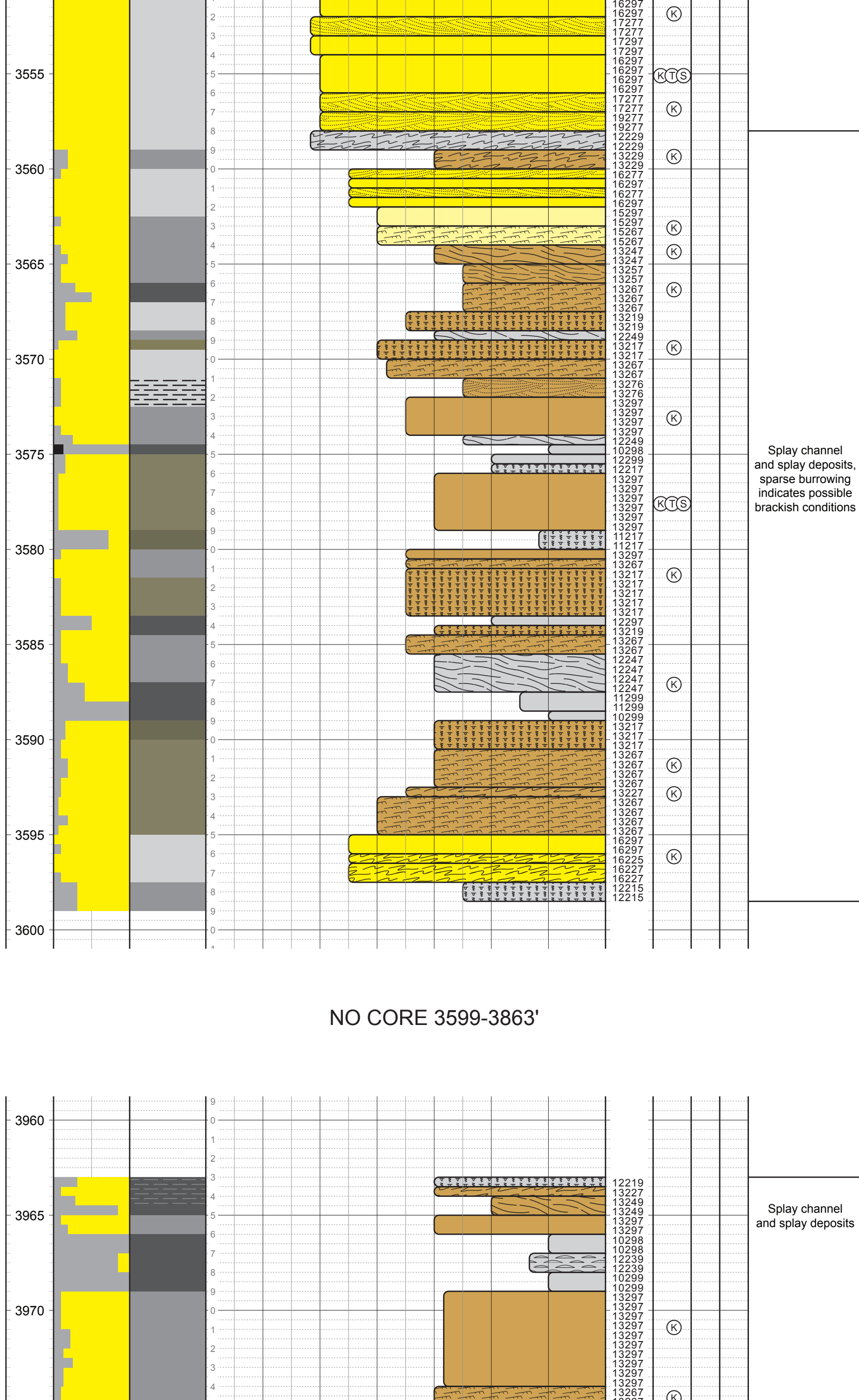
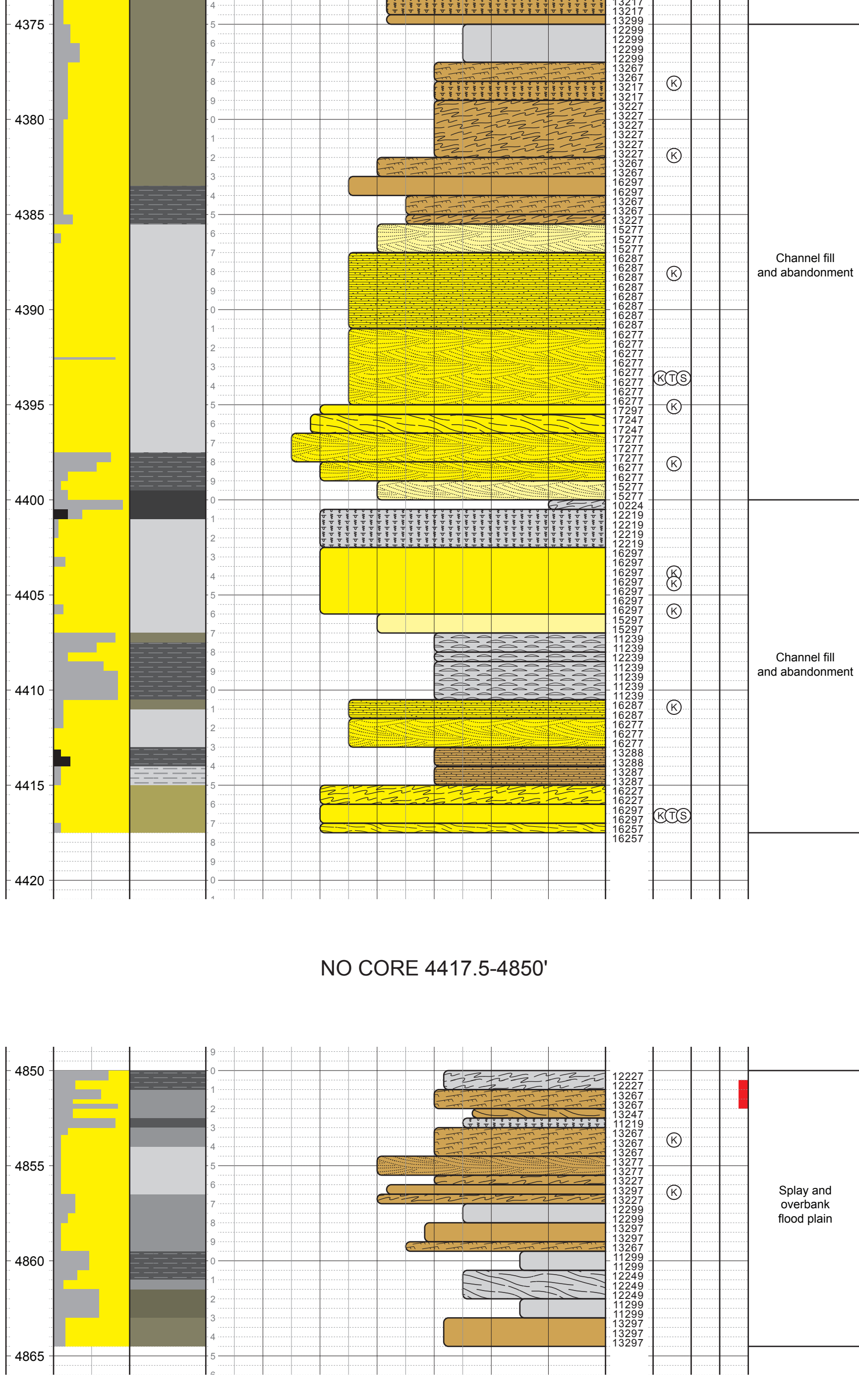
Core depth: 2800-2860' (OC), 3539-6197' (WF), 6197-6352' (C

Core storage location/Library no.:

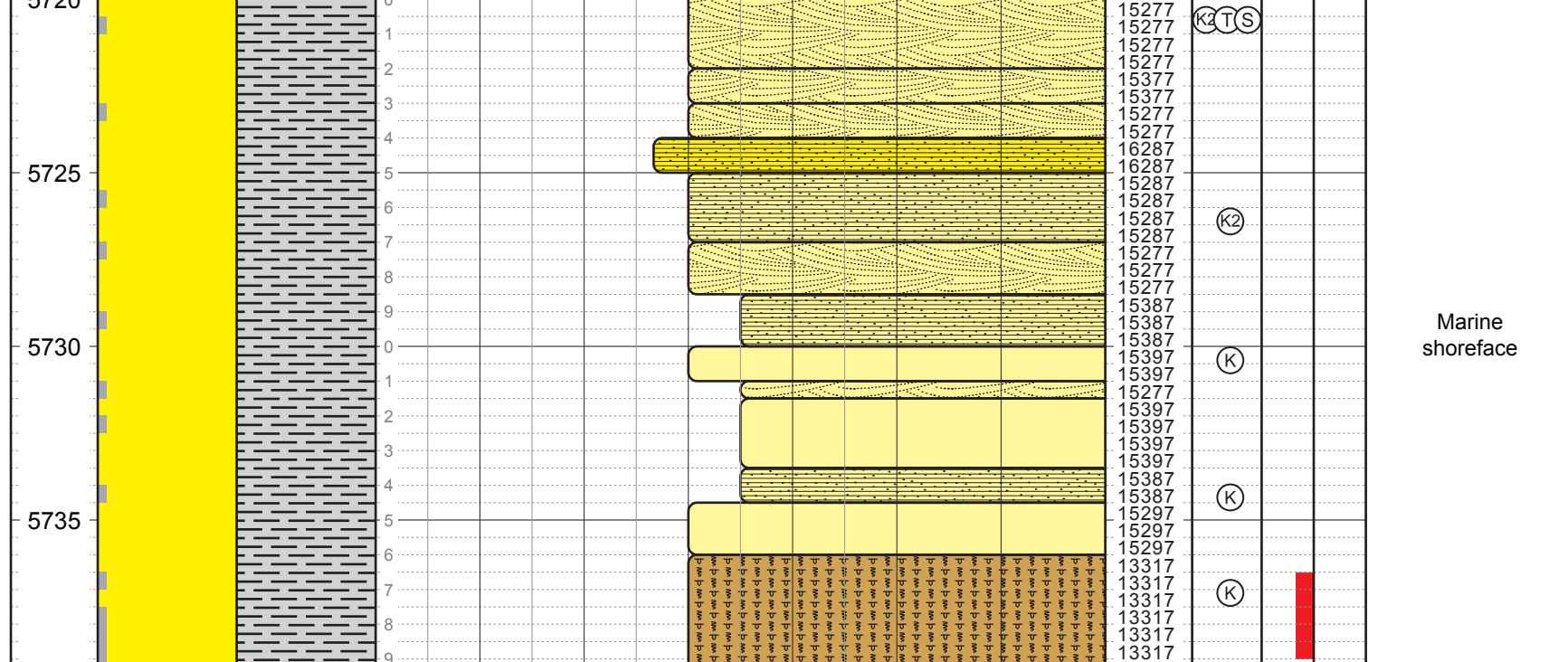
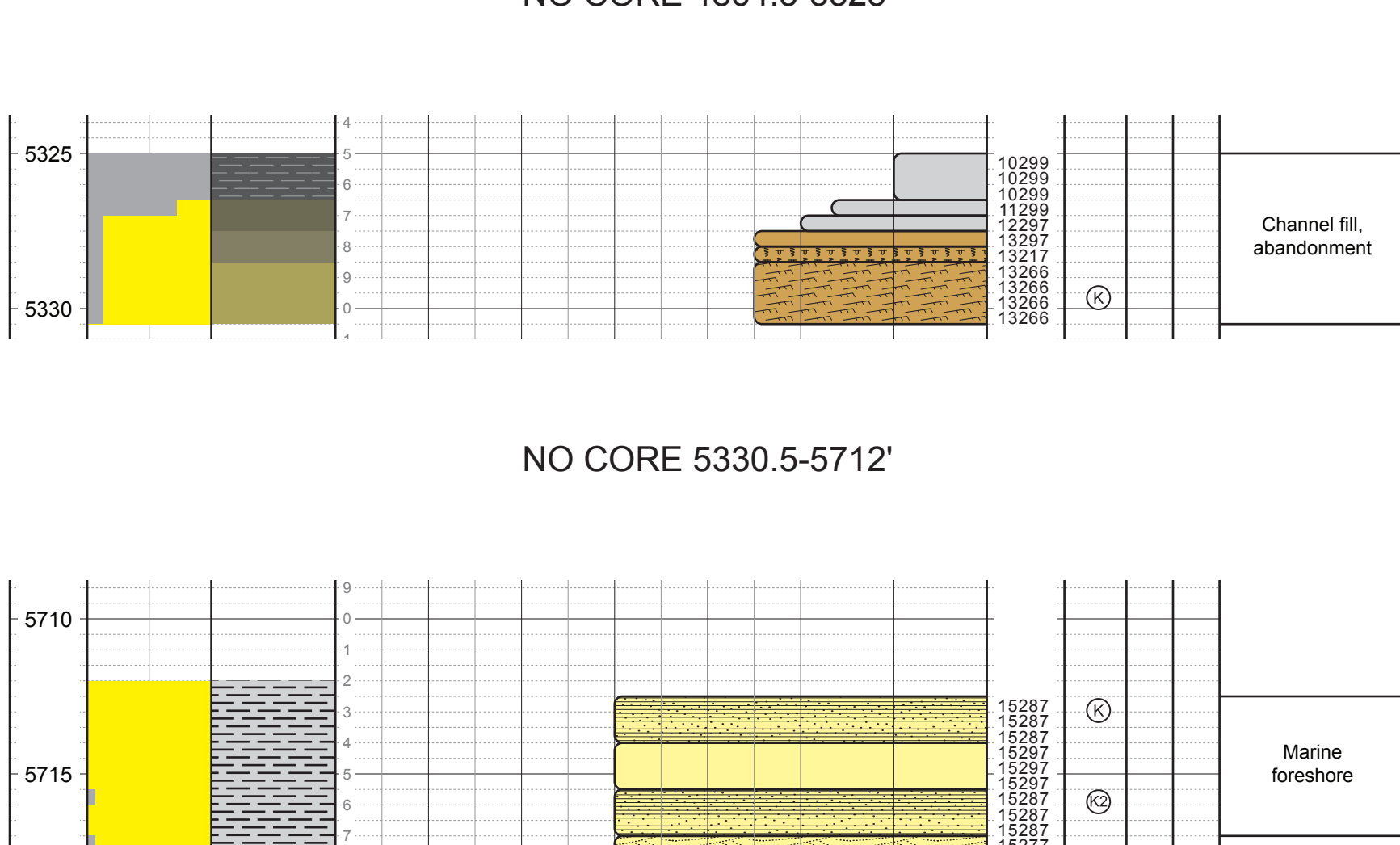
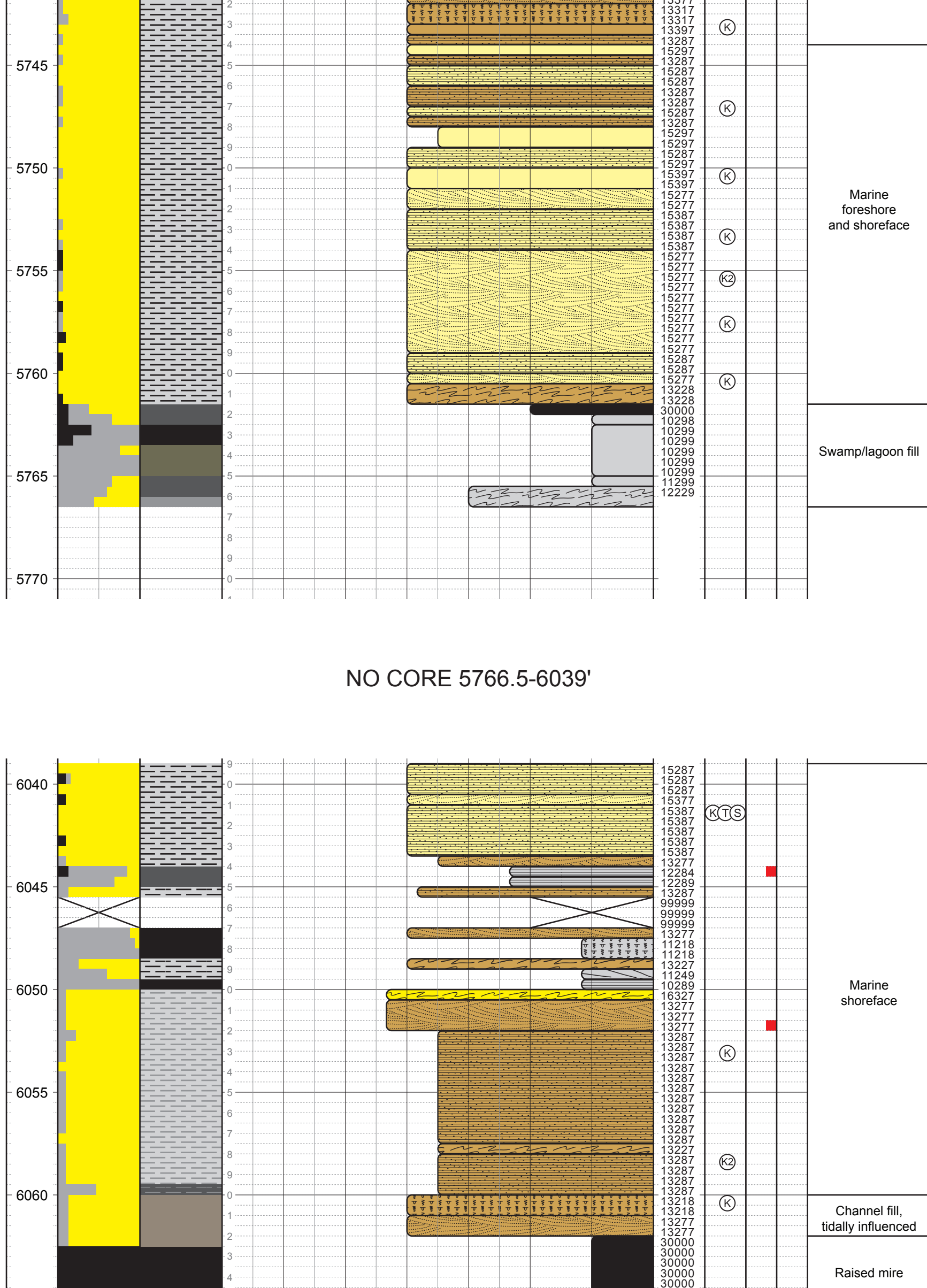
Core storage location/Library

4350 to 4420 = Core - 4 ft
4840 to 4870 = Core - 3 ft
5320 to 5340 = Core

5320 to 5340 = Core
5300 to 5330 = Case 3 ft

[illegible][illegible]

NO CORE 4864 5-5325'

[illegible][illegible]