

Location: sec. 34, T6S-
Formation: Williams Fork
Core depth: 4566-4739', 5
Core storage location/Library
Described by: John C. Webb

Depth (in ft)	Lithology	Col (use
------------------	-----------	-------------

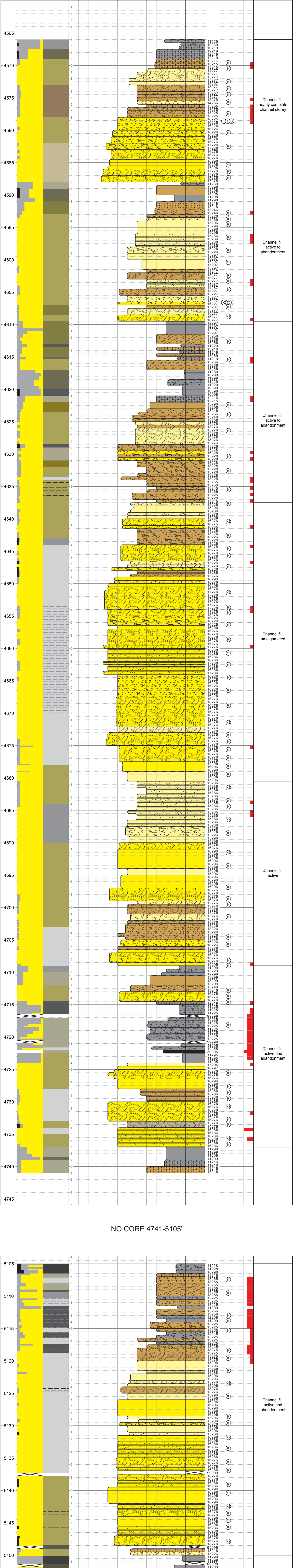
County: Garfield State: MT
Basin: Piceance
Log depth = Core depth +/-
API: 05-045-10927-0000
Core diam: 4 inch State: MT

Lithology		
Interval	Depth	Notes
0 - 10	0 - 10	Shale
10 - 20	10 - 20	Shale
20 - 30	20 - 30	Shale
30 - 40	30 - 40	Shale
40 - 50	40 - 50	Shale
50 - 60	50 - 60	Shale
60 - 70	60 - 70	Shale
70 - 80	70 - 80	Shale
80 - 90	80 - 90	Shale
90 - 100	90 - 100	Shale

4450 to 4750 ft = Core - 6 ft
4990 to 5210 ft = Core - 9 ft
6050 to 6160 ft = Core - 10 ft
6550 to 6660 ft = Core - 10 ft

Condition: Excellent

Pls	Sid	Cal	Environment
-----	-----	-----	-------------

[illegible]