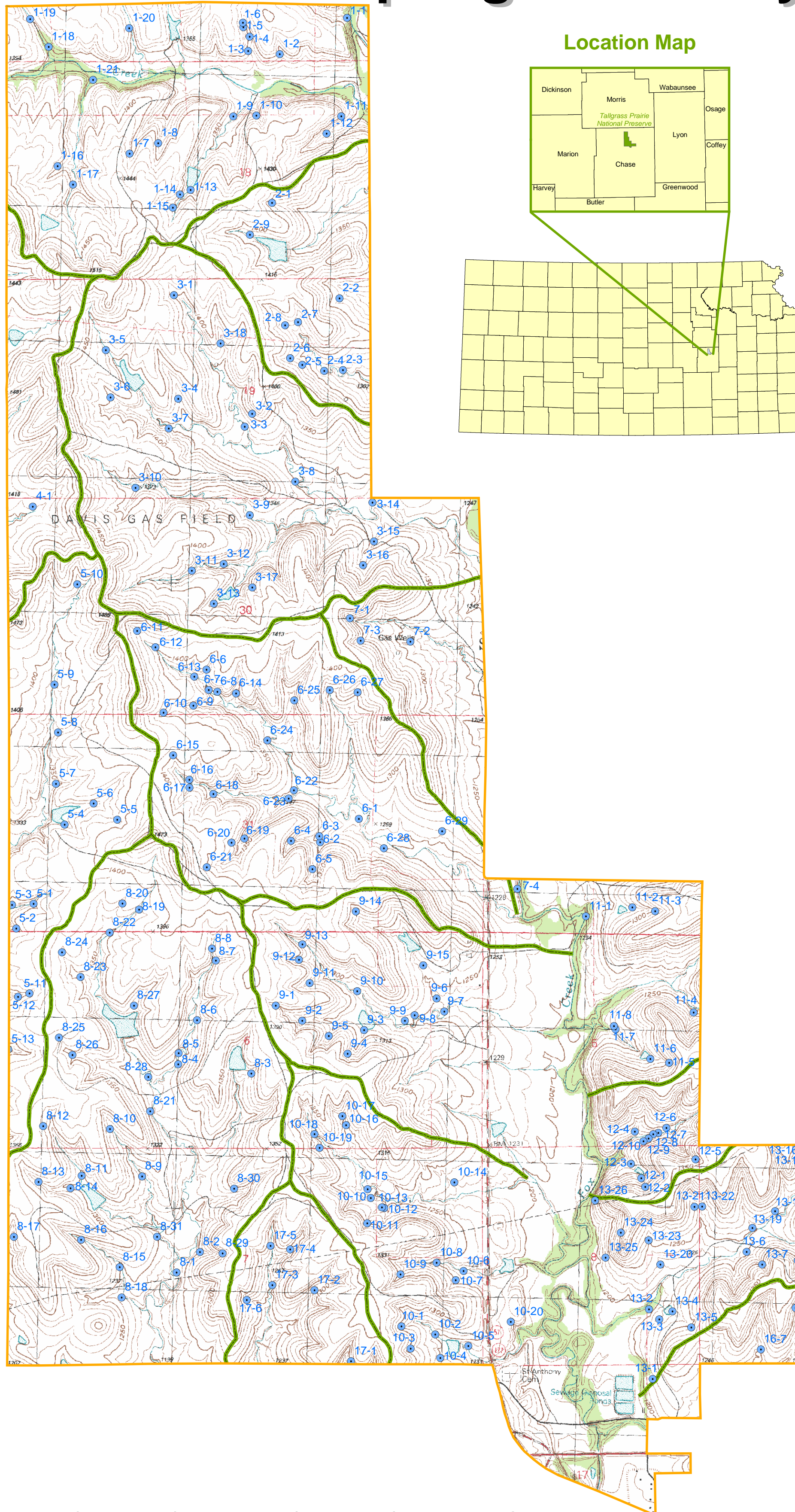
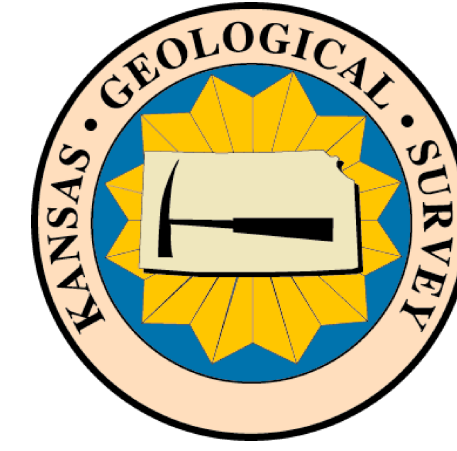


Tallgrass Prairie National Preserve Springs Inventory



Legend:
● Spring Locations
~ Drainage Boundaries

Citation Information:
- Spring locations were collected using GPS during April 9-18, 2001
- Generalized drainage boundaries developed by Robert Sawin & Rex Buchanan, KGS, April, 2001
- Digital USGS Quad Map (1:24,000 Digital Raster Graphic) developed by USGS (Strong City, Kansas quadrangle)
- Cartographic Production by the State of Kansas Geographic Information Systems Initiative's Data Access and Support Center (DASC) located at the Kansas Geological Survey (KGS)

Projection Information:
Universal Transverse Mercator (UTM)
Zone: 14
Units: Meters
Datum: North American Datum 1983 (NAD83)
Spheroid: Geodetic Reference System 1980 (GRS80)

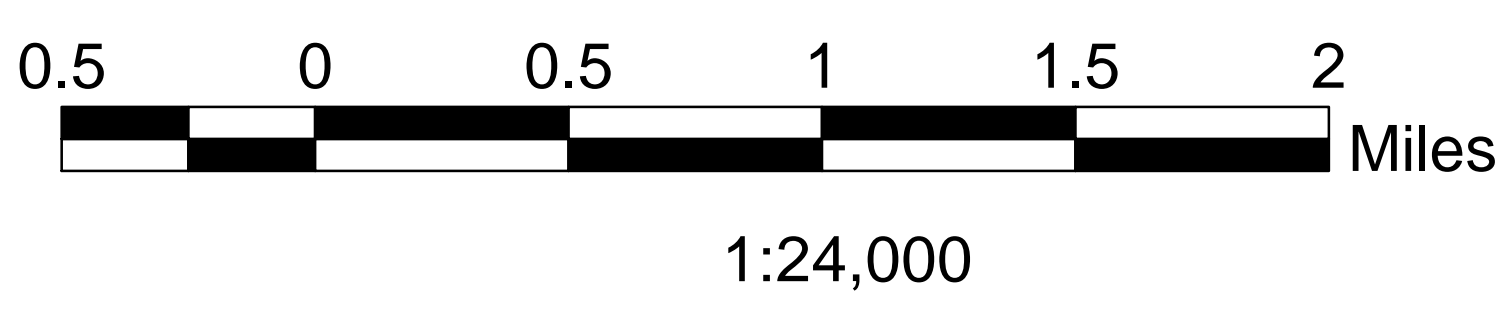
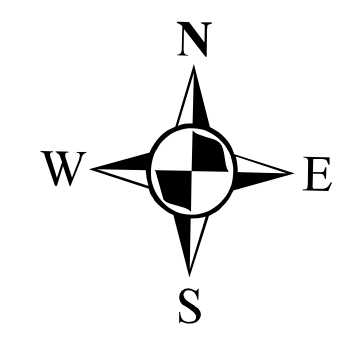


PLATE 1
Springs Inventory
April 9-18, 2001
KGS Open-file Report 2001-40