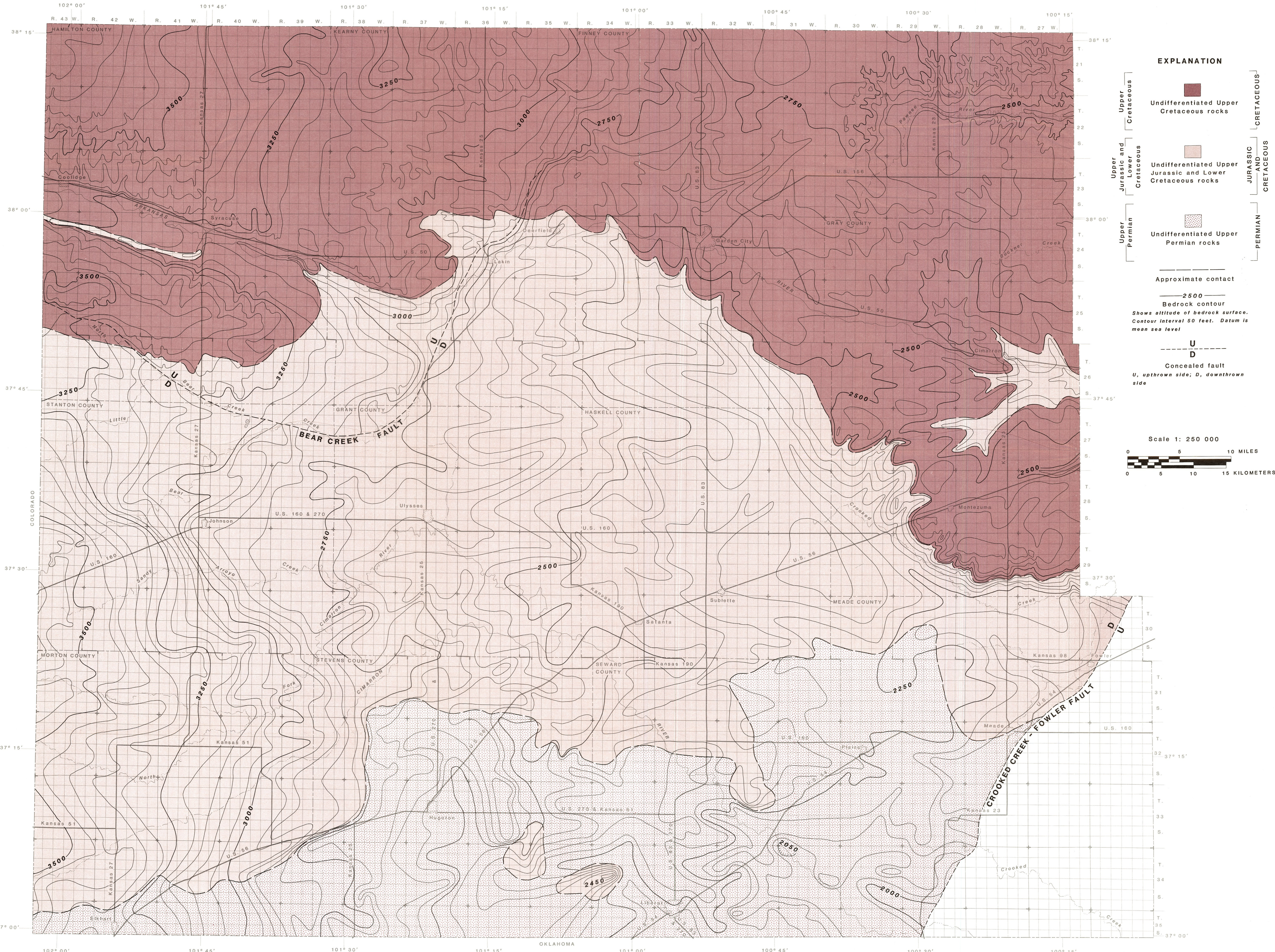


MAP SHOWING BEDROCK GEOLOGY AND CONFIGURATION OF THE BEDROCK SURFACE, SOUTHWESTERN KANSAS



EXPLANATION

- Undifferentiated Upper Cretaceous rocks
- Undifferentiated Upper Jurassic and Lower Cretaceous rocks
- Undifferentiated Upper Permian rocks
- Approximate contact
- 2500
Bedrock contour
Shows altitude of bedrock surface. Contour interval 50 feet. Datum is mean sea level.
- U
D
Concealed fault
U, upthrown side; D, downthrown side

