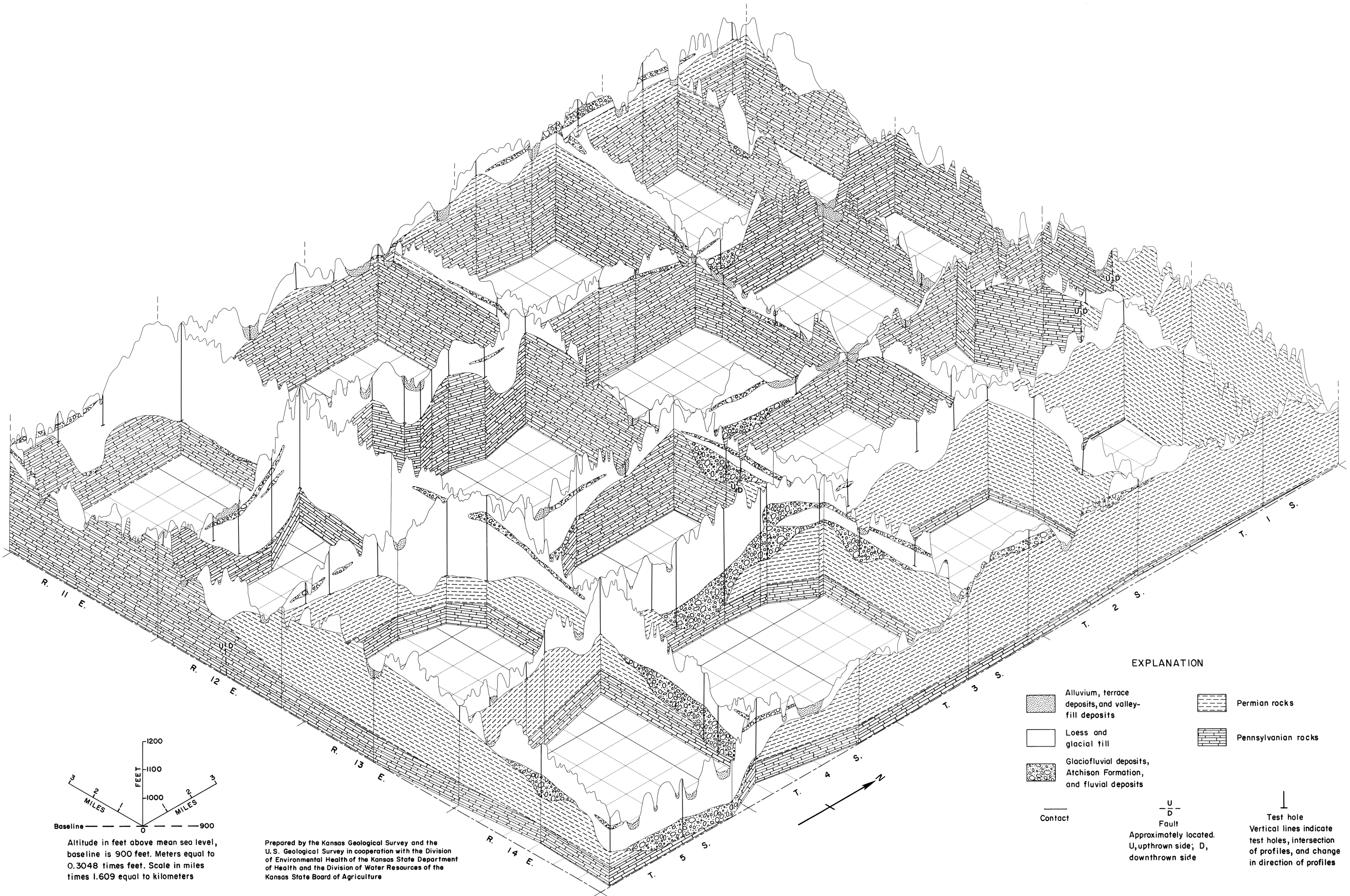
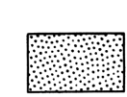
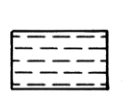
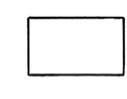
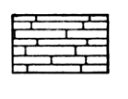

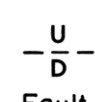

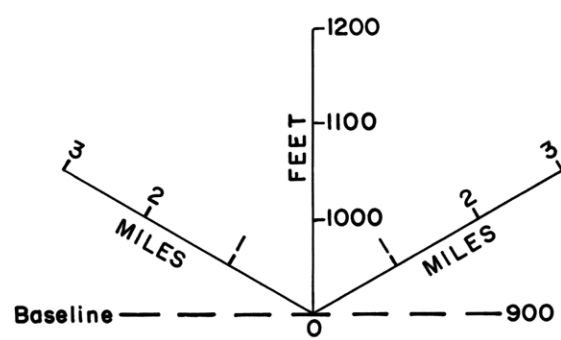


FENCE DIAGRAM SHOWING CORRELATION OF STRATIGRAPHY IN NEMAHA COUNTY, NORTHEASTERN KANSAS



EXPLANATION

- | | | | |
|---|--|---|---|
|  | Alluvium, terrace deposits, and valley-fill deposits |  | Permian rocks |
|  | Loess and glacial fill |  | Pennsylvanian rocks |
|  | Glaciofluvial deposits, Atchison Formation, and fluvial deposits | | |
| | Contact |  | Fault
Approximately located.
U, upthrown side; D,
downthrown side |
| | |  | Test hole
Vertical lines indicate
test holes, intersection
of profiles, and change
in direction of profiles |



Altitude in feet above mean sea level, baseline is 900 feet. Meters equal to 0.3048 times feet. Scale in miles times 1.609 equal to kilometers

Prepared by the Kansas Geological Survey and the U.S. Geological Survey in cooperation with the Division of Environmental Health of the Kansas State Department of Health and the Division of Water Resources of the Kansas State Board of Agriculture