

The Occurrence of Corals in Late Paleozoic
Rocks of Kansas

Kansas Geological Survey, Bulletin 76, pt. 3, 1948

by Russell M. Jeffords

Plates and Figures

Plate 1—Illustrations of some important structural characters in Kansas corals (in part after Miller and Gurley, 1892; and Jeffords, 1942). Approximately X 2.5.

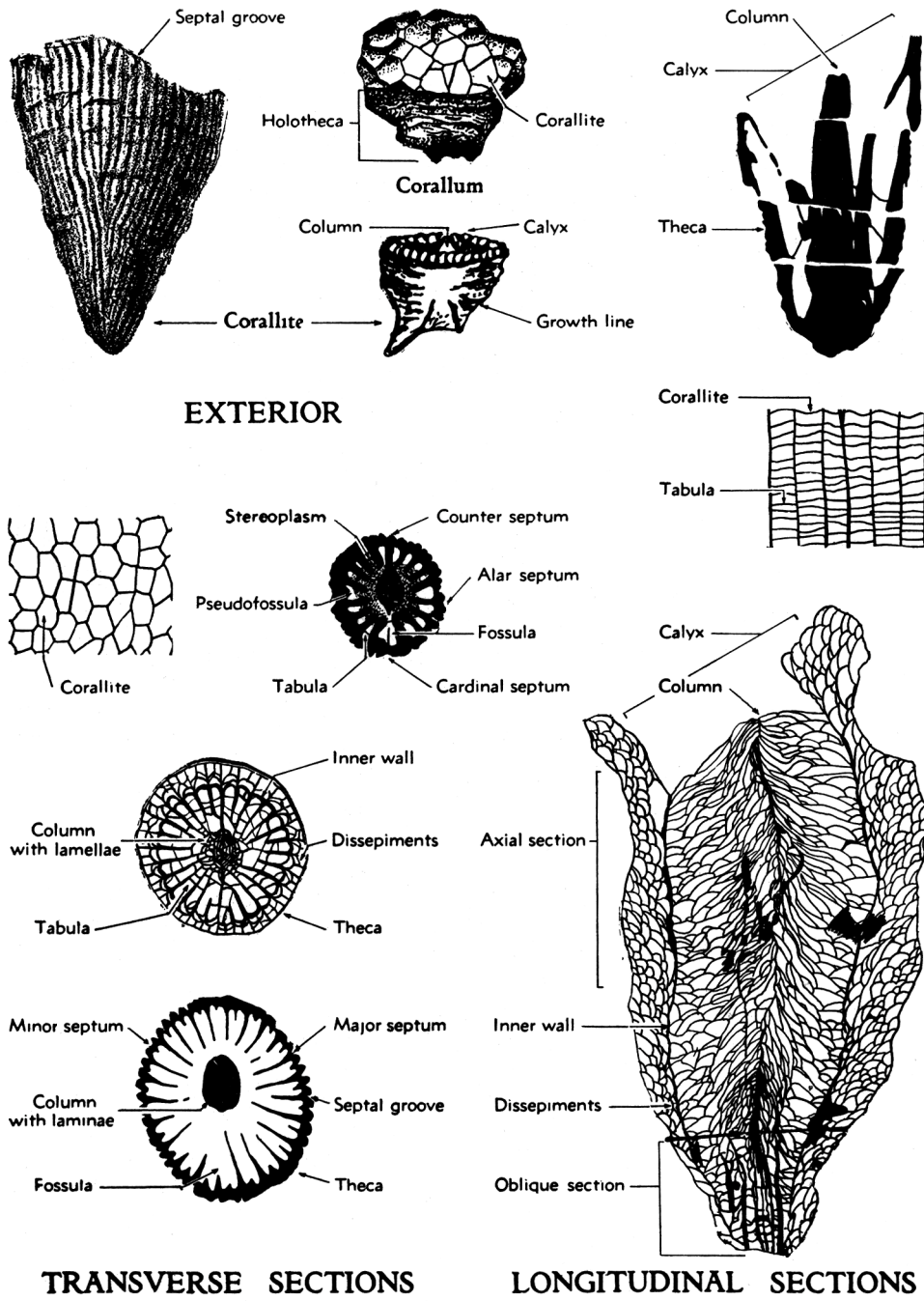


Plate 2—Lophophyllidid and "zaphrenthid" coral general occurring in Kansas (in part after Moore and Jeffords, 1941; and Jeffords, 1942, 1947). X 2.5.

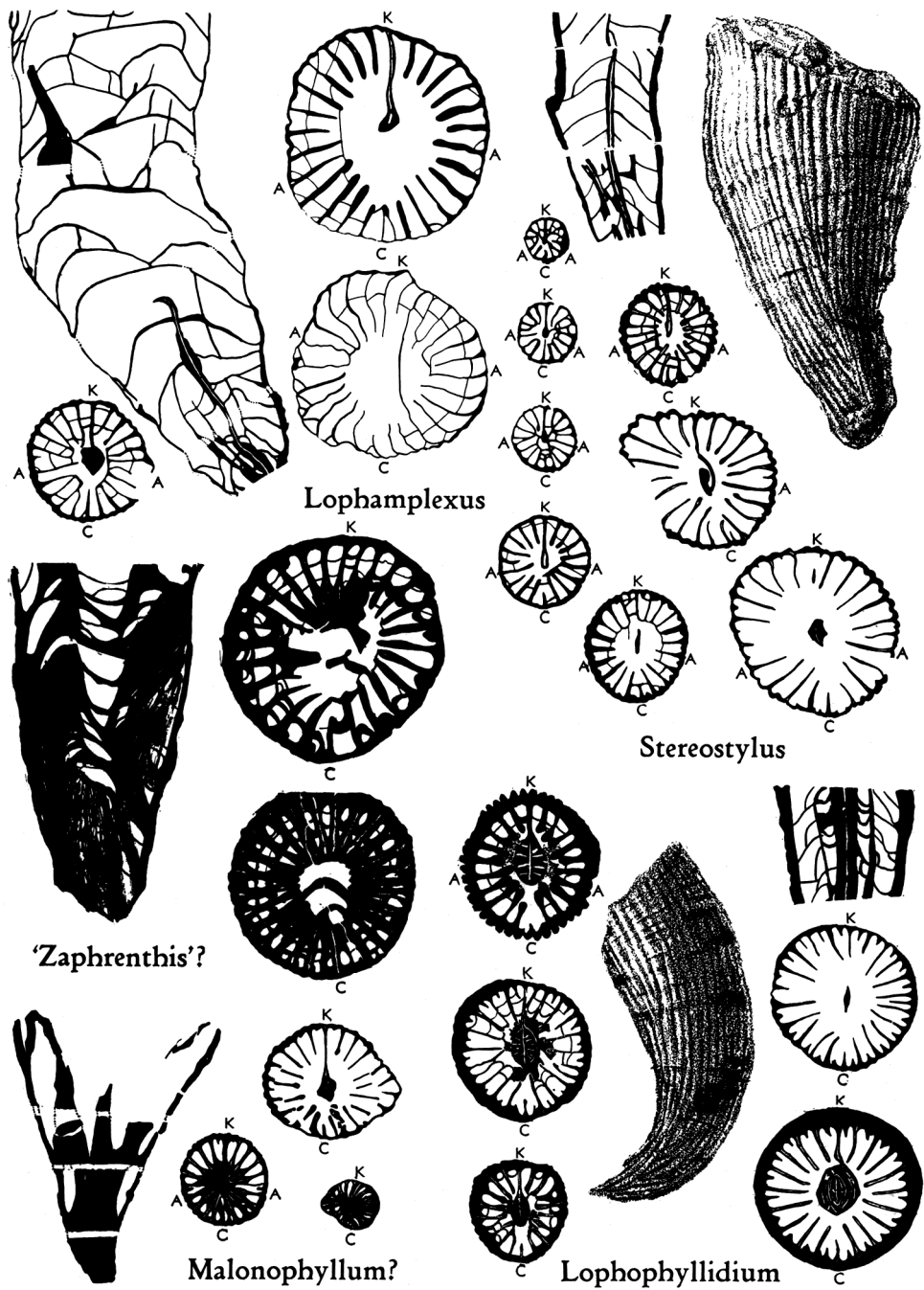
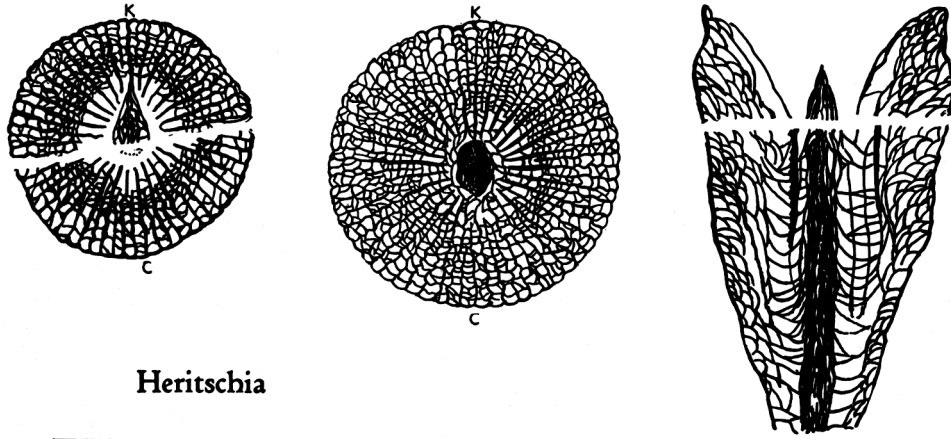
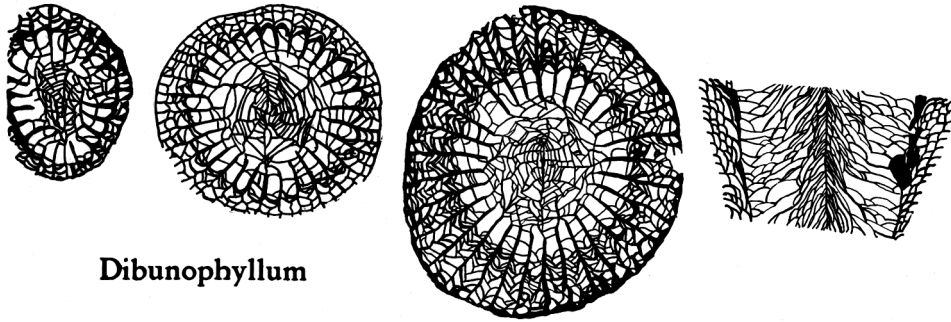


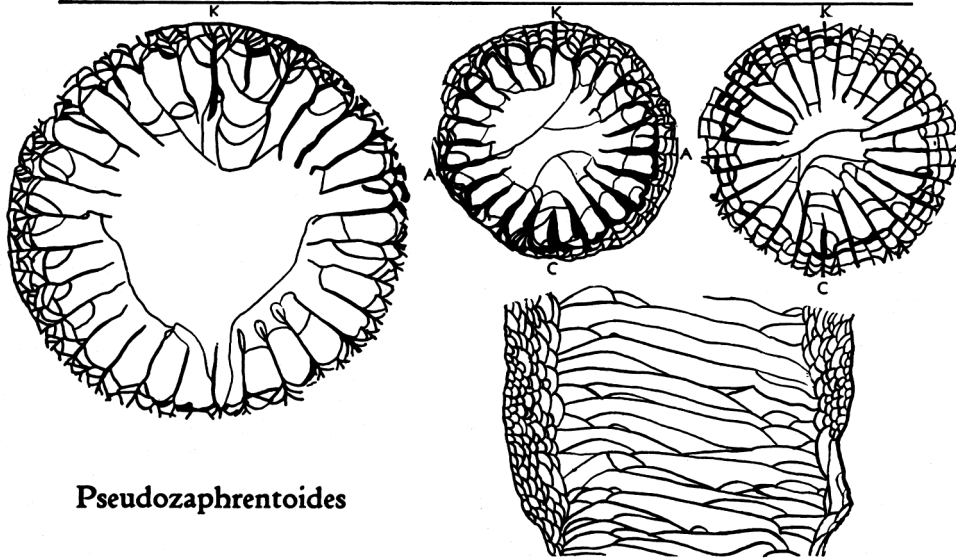
Plate 3—Clisiophyllid and caninid coral general occurring in Kansas (in part after Moore and Jeffords, 1941). X 2.5.



Heritschia

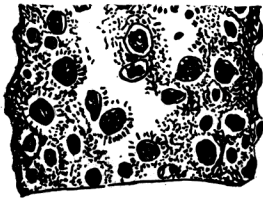
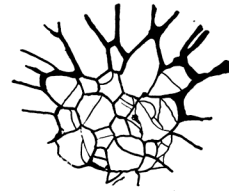
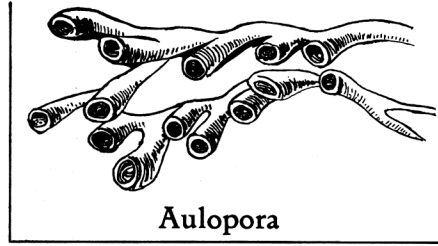


Dibunophyllum

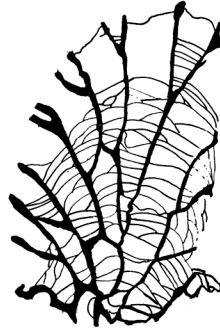


Pseudozaphrentoides

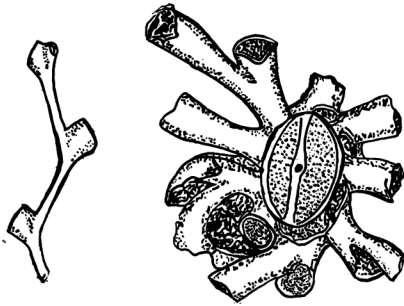
Plate 4—Tabulate coral general occurring in Kansas (in part after Worthen, 1890; Miller and Gurley, 1893, Keyes, 1894, and Mather, 1915). Approximately X 2.5.



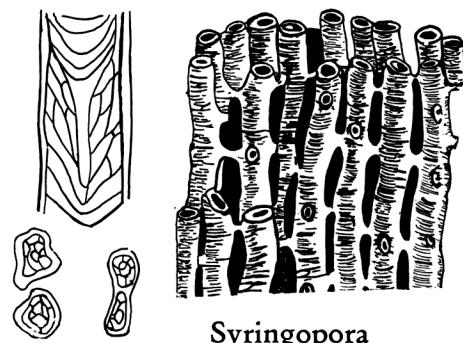
Striatopora



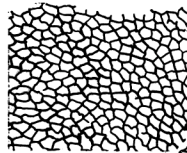
Michelinia



Cladochonus



Syringopora



Chaetetes

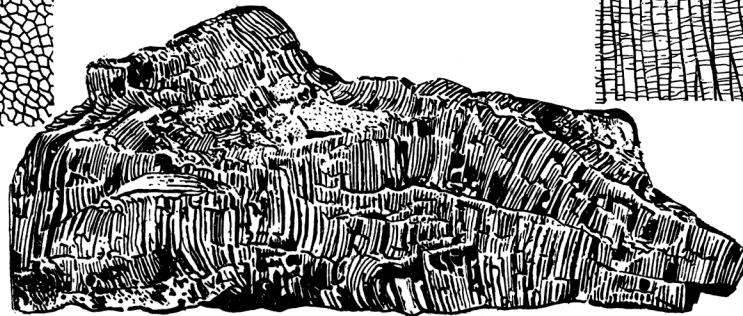
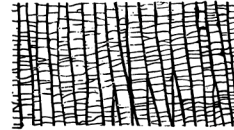
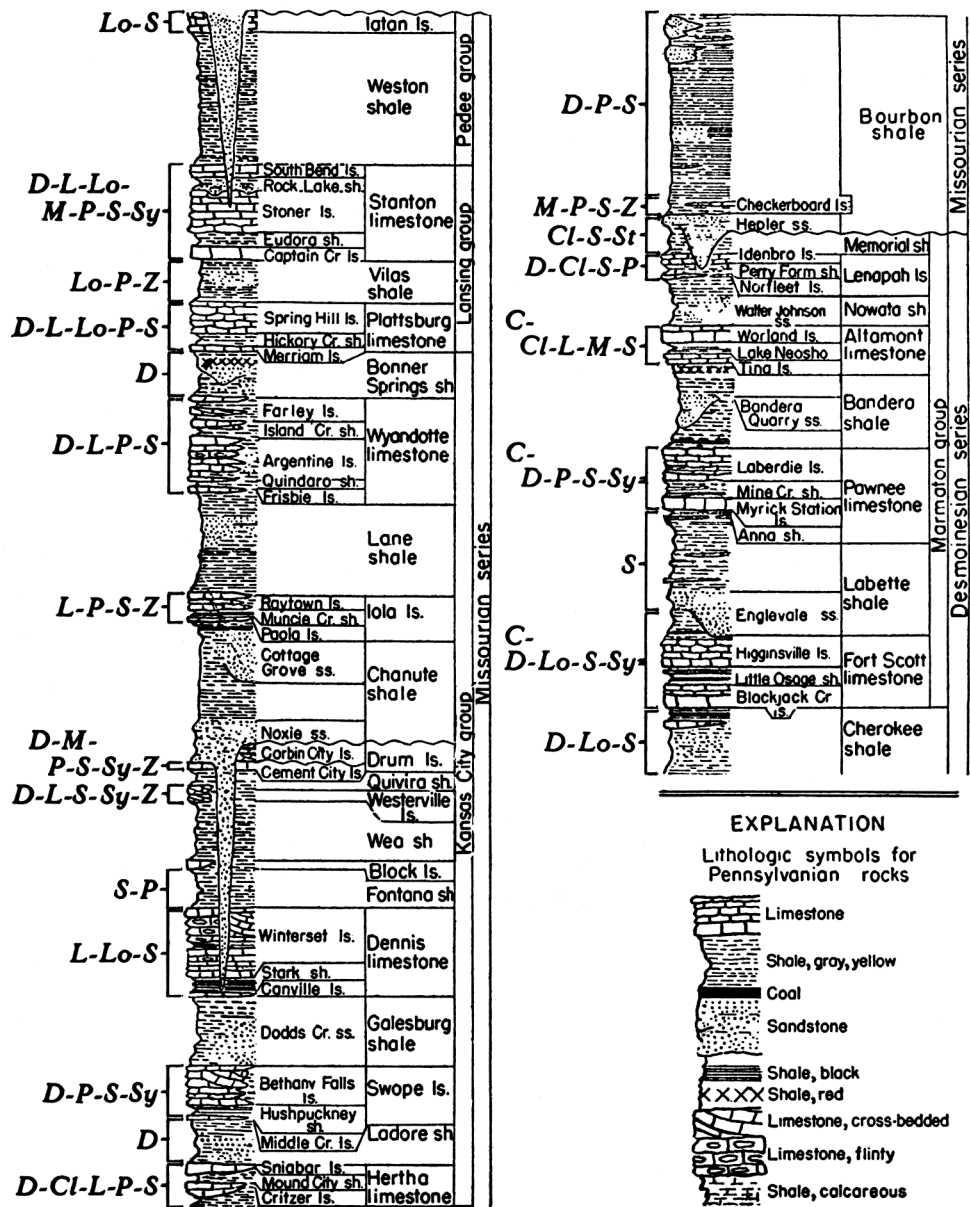
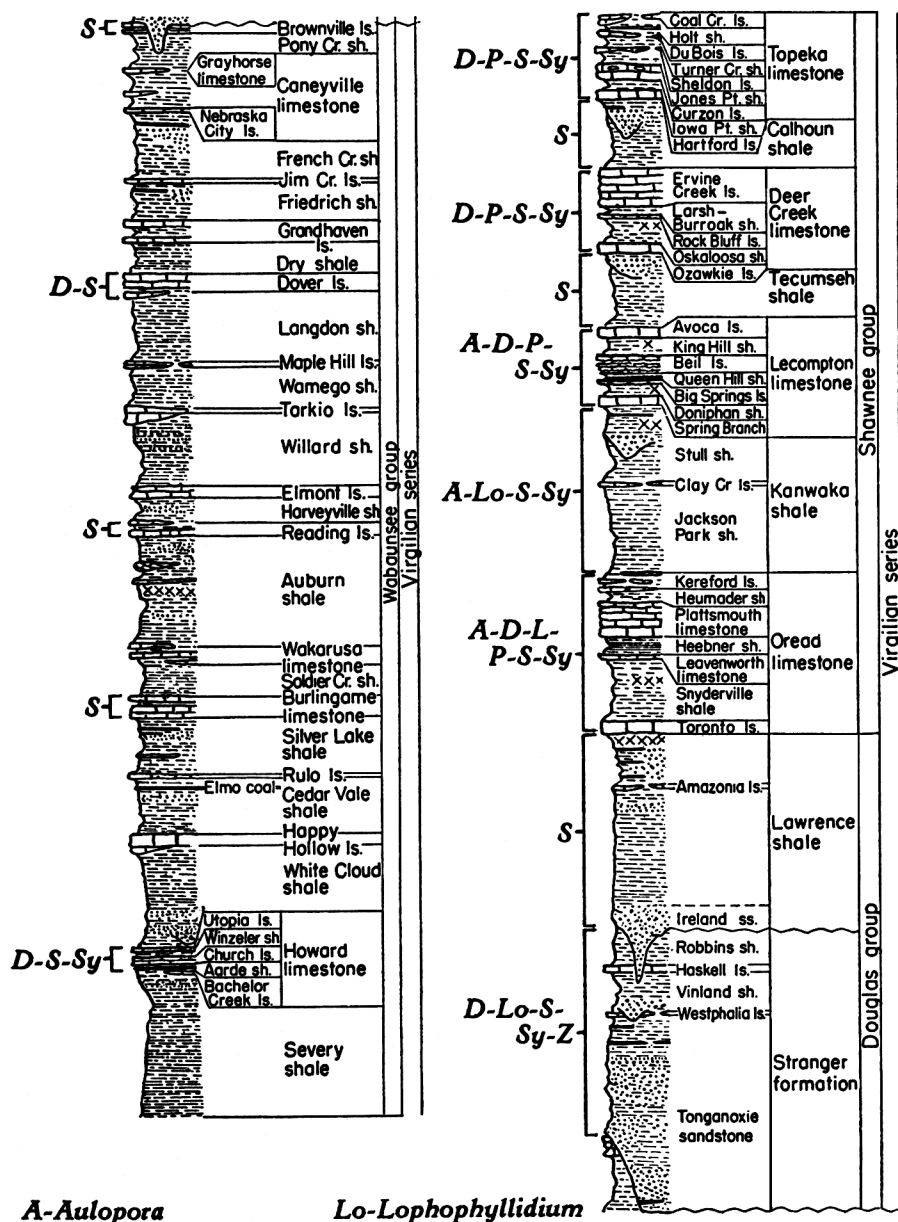


Fig. 1—Generalized section of Desmoinesian and Missourian rocks in Kansas showing the occurrence of coral genera.



- | | | |
|------------------------|------------------------------|------------------------|
| <i>Cl-Cladochonus</i> | <i>Lo-Lophophyllidium</i> | |
| <i>C-Chaetetes</i> | <i>M-Michelinia</i> | <i>St-Striatopora</i> |
| <i>D-Dibunophyllum</i> | <i>P-Pseudozaphrentoides</i> | <i>Sy-Syringopora</i> |
| <i>L-Lophamplexus</i> | <i>S-Stereostylus</i> | <i>Z-'Zaphrenthis'</i> |

Fig. 2—Generalized section of Virgilian rocks in Kansas showing the occurrence of coral genera.



A-Aulopora

Lo-Lophophyllidium

D-Dibunophyllum

P-Pseudozaphrentoides

Sy-Syringopora

L-Lophamplexus

S-Stereostylus

Z-'Zaphrenthis'

Fig. 3—Generalized section of Lower Permian rocks in Kansas showing the occurrence of coral genera.

