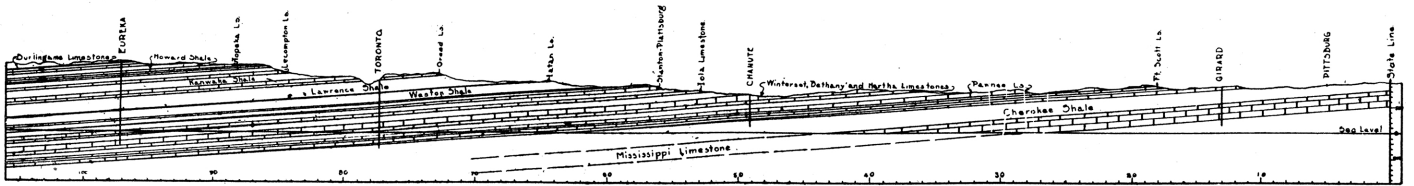
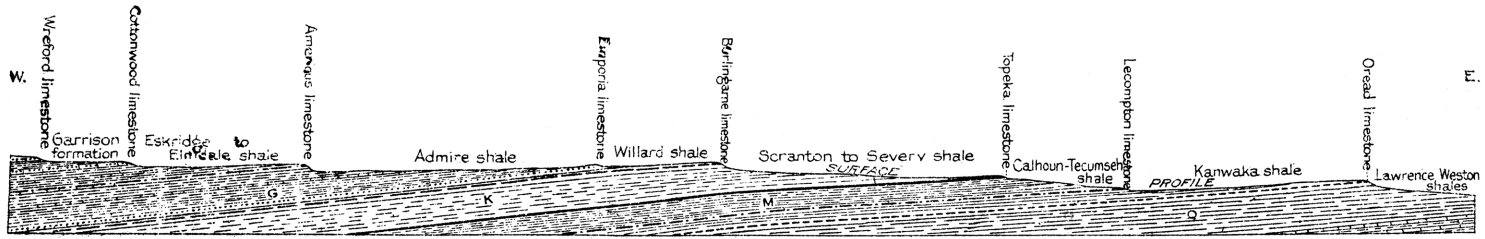
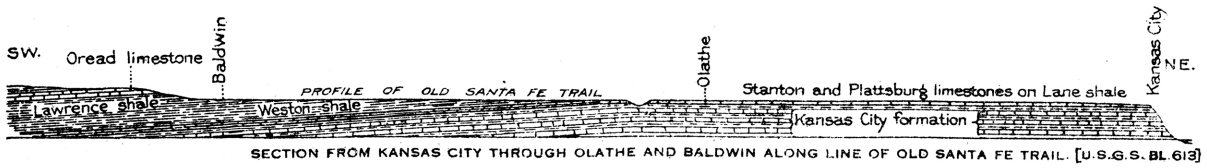


A. Section showing underground relations of rocks from the state line east of Paola to a point about ten miles west of Osage City.

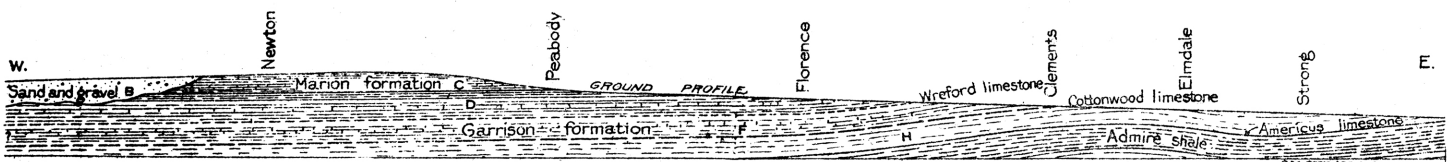


B. Section showing underground relations of rocks from the state line east of Fort Scott to Burlington.

Vertical scale greatly exaggerated. This has the effect of increasing apparent tilt of beds.

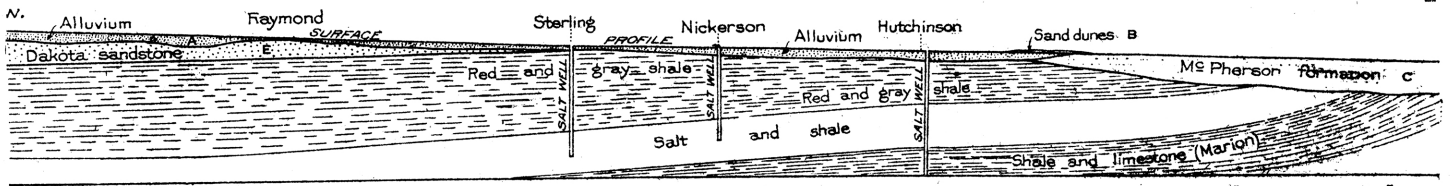


SECTION SHOWING RELATIONS OF LIMESTONES AND SHALES ACROSS THE SOUTHERN PART OF THE AREA COVERED BY SHEET 2 [U.S.G.S. BULL. 613]
VERTICAL SCALE GREATLY EXAGGERATED (26 TIMES). THIS HAS EFFECT OF INCREASING APPARENT TILT OF BEDS

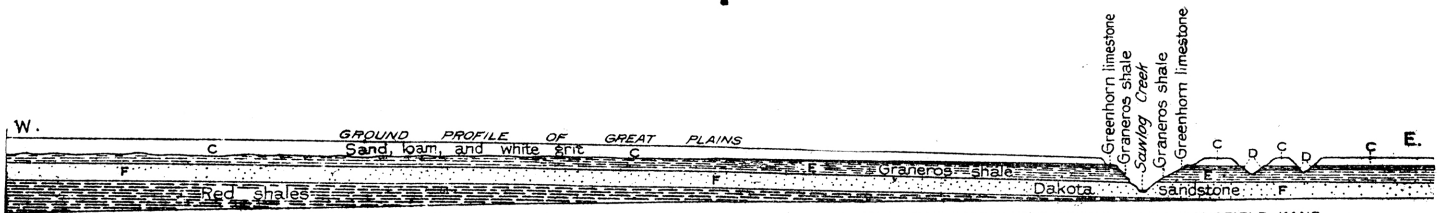


SECTION SHOWING UNDERGROUND RELATIONS OF ROCKS ALONG SANTA FE RAILWAY BETWEEN STRONG CITY AND HALSTEAD KANS [U.S.G.S BULL. 613]
VERTICAL SCALE GREATLY EXAGGERATED (28 TIMES). THIS HAS EFFECT OF INCREASING APPARENT TILT OF BEDS

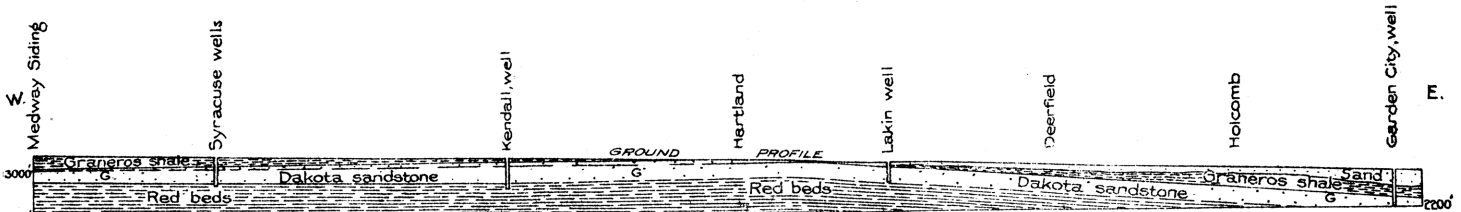
C. Section from Kansas City through Olathe and Baldwin along line of old Santa Fe trail.
D. Section from Pomona to point west of Emporia,
E. Section from Strong City to Halstead, Kan.



SECTION SHOWING UNDERGROUND RELATIONS OF ROCKS ALONG SANTA FE RAILWAY BETWEEN PAXTON AND ELLINWOOD, KANS. [U.S.G.S BULL. 613]
VERTICAL SCALE GREATLY EXAGGERATED THIS HAS EFFECT OF INCREASING APPARENT TILT OF BEDS



SECTION SHOWING UNDERGROUND RELATIONS OF ROCKS IN PLATEAU NORTH OF ARKANSAS RIVER BETWEEN SPEARVILLE AND MANSFIELD, KANS [U.S.G.S BULL. 613]
VERTICAL SCALE GREATLY EXAGGERATED. THIS HAS EFFECT OF INCREASING APPARENT TILT OF BEDS



SECTION SHOWING UNDERGROUND RELATIONS OF ROCKS ALONG SANTA FE RAILWAY BETWEEN GARDEN CITY AND MEDWAY, KANS [U.S.G.S BULL. 613]

F. Section from Paxton to Ellinwood, Kan.
G. Section from Spearville to Mansfield, Kan.
H. Section from Garden City to Medway, Kan.