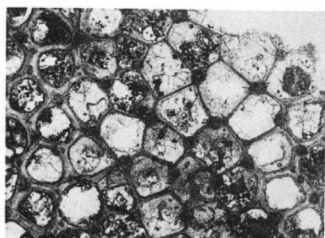


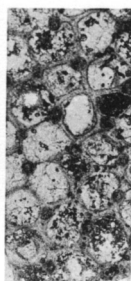
1



2



3



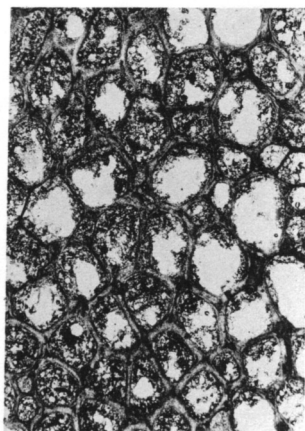
4



5



6



7

PLATE 5

(Figures 2 and 5, X60; other figures, X20.)

Fig. 1-4. — *Tabulipora groverensis* Perkins & Perry, n. sp.; holotype, IU 6809. 1, Longitudinal section showing centrally perforate diaphragms and isolated and coalesced monilae. 2, Tangential section displaying prominent acanthopores. 3, Tangential section showing distribution of acanthopores and variation in zooecial wall thickness. 4, Tangential section.

Fig. 5-7. — *Stenopora pauca* Perkins & Perry, n. sp.; holotype, IU 6810. 5, Tangential section. 6, Longitudinal section exhibiting thin zooecial walls and poorly developed monilae above plane of rejuvenation. 7, Tangential section.