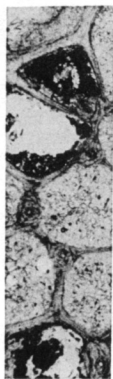
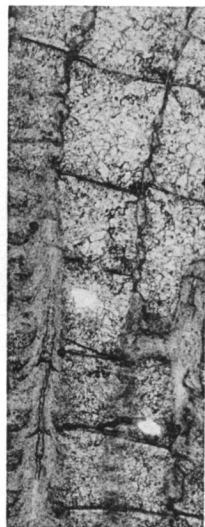


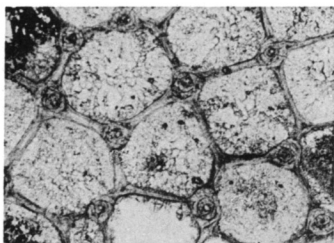
1



2



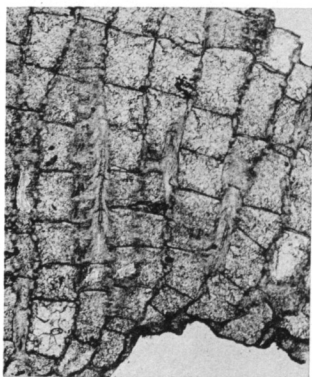
3



4



6



5

PLATE 4

(Figures 2-4, X60; other figures, X20.)

Fig. 1-6. — *Tabulipora regularis* Perkins & Perry, n. sp.; holotype, IU 6807. 1, Tangential section showing uniform size and arrangement of zooecia. 2, Tangential section. 3, Longitudinal section revealing acanthopore (lower left), a centrally perforate diaphragm (center), and monilae. 4, Tangential section showing nature of acanthopores and zooecial wall structure. 5, Longitudinal section. 6, Longitudinal section showing thin-walled inclined zooecia immediately above plane of rejuvenation.