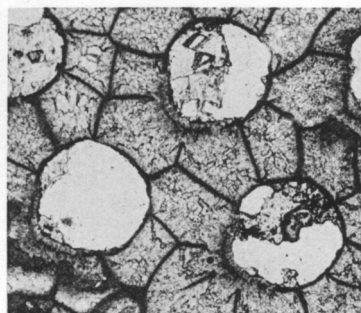
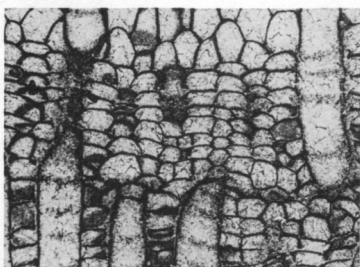




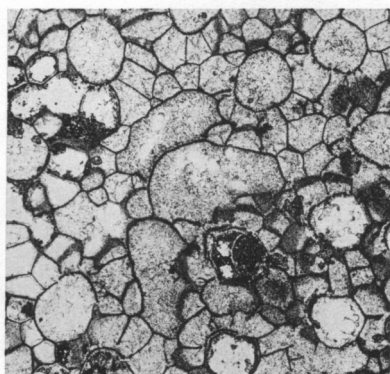
1



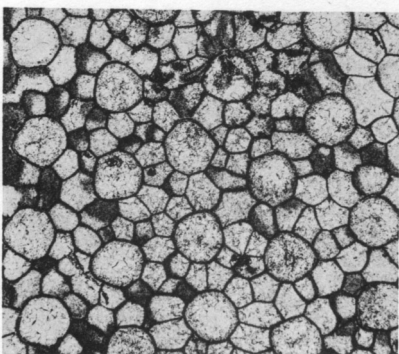
2



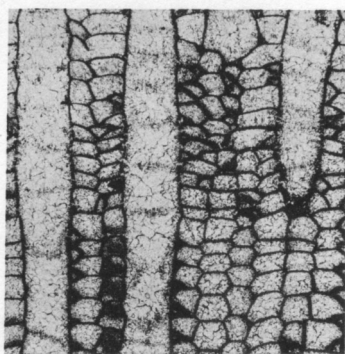
3



4



5



6

PLATE 1

(Figure 2, X60; other figures, X20.)

Fig. 1. — *Meekopora* sp. indet. Longitudinal section showing zoecia diverging from central mesotheca and adjoining vesicles; outer part of colony excessively silicified (IU 6806).

Fig. 2-6. — *Fistulipora decora* (Moore and Dudley); hypotypes. 2, Tangential section showing thickened lunaria (IU 6781). 3, Longitudinal section displaying compressed and vertically elongate vesicles (IU 6782). 4, Tangential section exhibiting monticule (IU 6780). 5, Typical tangential section (IU 6783). 6, Longitudinal section showing normal development of interzoecial tissue (IU 6783).