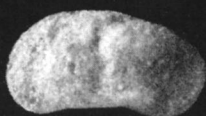


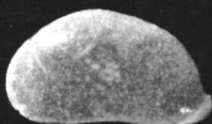
1



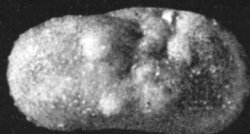
2



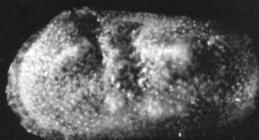
3



4



6



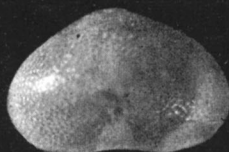
7



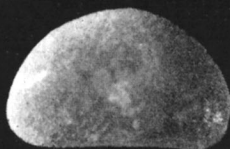
8



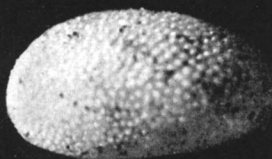
9



10



5



11



12



13

## Explanation for Plate 1. All figures X60.

**Fig. 1-3**--*Limnocythere staplini* n. sp. **1**, male left valve (allotype). **2**, female left valve (holotype). **3**, female right valve (paratype).

**Fig. 4-5**--*Potamocypris smaragdina* (Vávra), 1891. **4**, left valve of adult. **5**, right valve of adult.

**Fig. 6-7**--*Ilyocypris gibba* (Ramdohr), 1808. **6**, right valve of adult. **7**, left valve of adult.

**Fig. 8-9**--*Ilyocypris bradyi* Sars, 1890. **8**, left valve of adult. **9**, right valve of adult.

**Fig. 10**--*Cypridopsis vidua* (O. F. Müller), 1776, right valve of adult.

**Fig. 11**--*Cypricercus tuberculatus* (Sharpe), 1908, adult left valve.

**Fig. 12**--*Candona renoensis* n. sp., female left valve (holotype).

**Fig. 13**--*Candona fluviatilis* Hoff, 1942, adult left valve.

Neogene (Plio-Pleistocene) Fresh-water Ostracodes from the Central High Plains, by Edwin D. Gutentag and Richard H. Benson

Originally published in 1962 as Kansas Geological Survey Bulletin 157, Part 4.

[http://www.kgs.ku.edu/Publications/Bulletins/157\\_4/index.html](http://www.kgs.ku.edu/Publications/Bulletins/157_4/index.html)

Nov. 2005