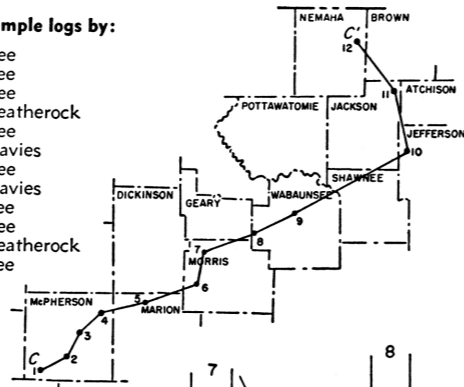


No.	Company	Well	Farm	Location
1	Texas	1	Pauls	Sec. 25, T. 21 S., R. 5 W.
2	Westgate-Greenland	1	Roberson	Sec. 22, T. 20 S., R. 3 W.
3	Aladdin	1	Johnson	Sec. 20, T. 19 S., R. 2 W.
4	Simmons et al	1	Bishop	Sec. 15, T. 18 S., R. 1 W.
5	White Eagle	1	Ucker	Sec. 24, T. 17 S., R. 2 E.
6	Lincoln	1	Breckbill	Sec. 24, T. 16 S., R. 5 E.
7	Frank et al	1	Nelson	Sec. 6, T. 15 S., R. 7 E.
8	Continental	1	Falk	Sec. 23, T. 13 S., R. 8 E.
9	Empire	1	Schwalm	Sec. 19, T. 12 S., R. 11 E.
10	Continental	1	Berridge	Sec. 8, T. 9 S., R. 17 E.
11	Carter	4	Strat. Test	Sec. 24, T. 4 S., R. 16 E.
12	Ohio	1	Lamparter	Sec. 3, T. 2 S., R. 14 E.

Sample logs by:

- Lee
- Lee
- Lee
- Leatherock
- Lee
- Davies
- Lee
- Davies
- Lee
- Lee
- Leatherock
- Lee



Explanation	
	Dolomite and calcareous dolomite
	Limestone and dolomitic limestone
	Dolomite laminae in shale
	Principal unconformity
	Dolomitic shale
	Chert
	Argillaceous limestone
	Shale

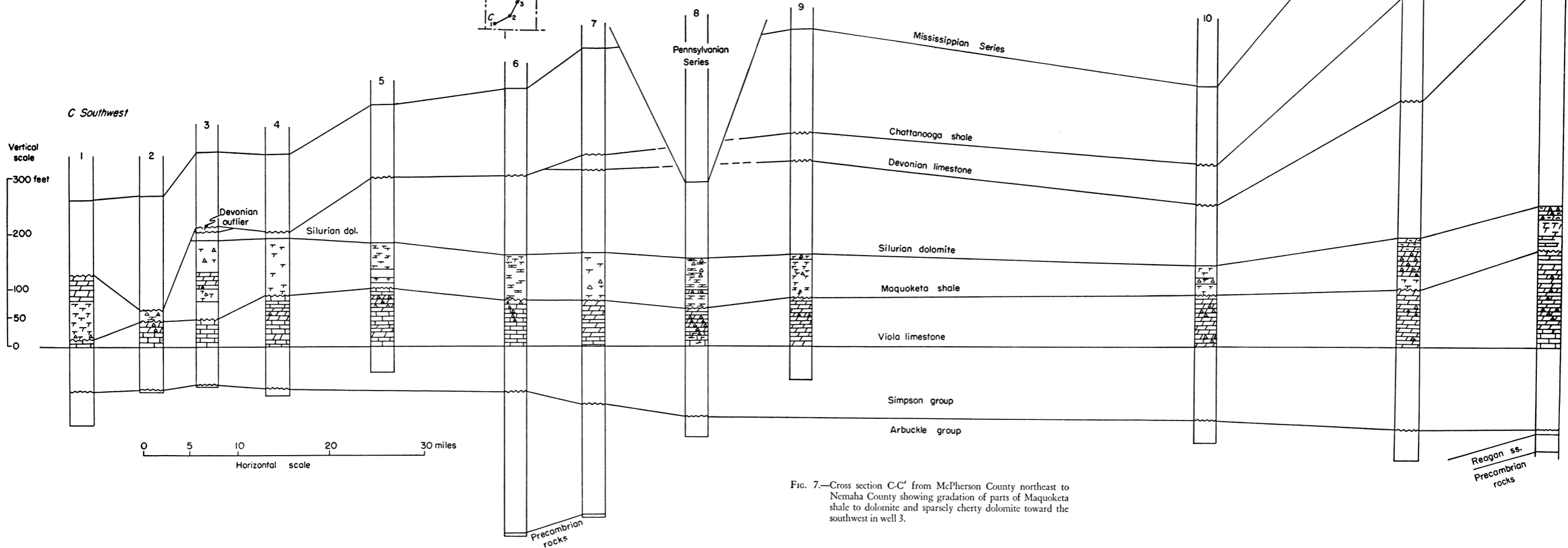


FIG. 7.—Cross section C-C' from McPherson County northeast to Nemaha County showing gradation of parts of Maquoketa shale to dolomite and sparsely cherty dolomite toward the southwest in well 3.