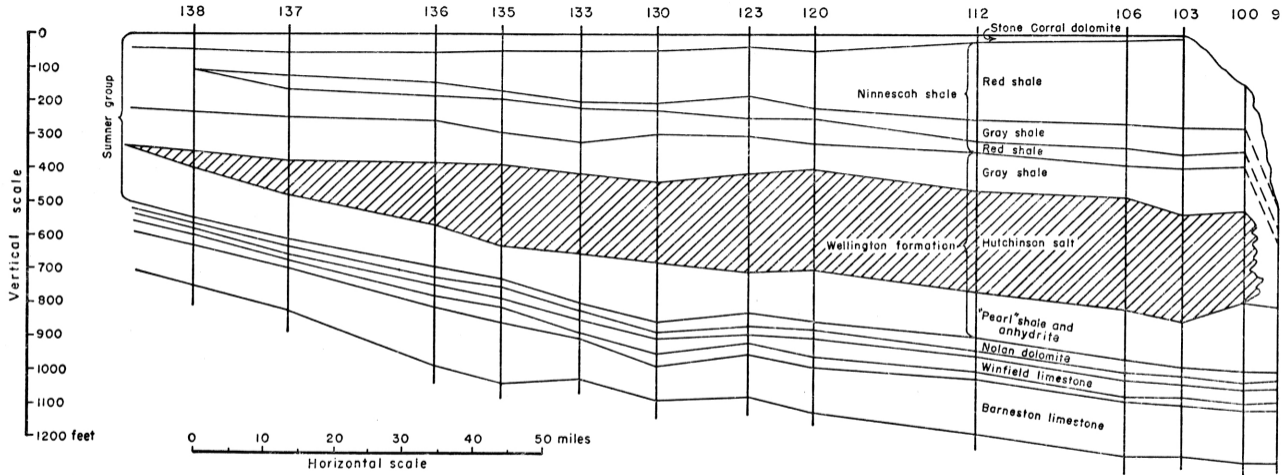


A West

East A'



East of this point the salt body was removed by leaching with settling of the overlying beds.

FIG. 16.—Cross section, west to east, of Sumner group, Leonardian Series, on line A-A' of Figure 15, showing lenticular character of Hutchinson salt member of Wellington shale (after Kellett, 1932). Salt at eastern end of cross section has been dissolved down dip from outcrop area. Well numbers correspond to those of the original cross section by Kellett (1932).