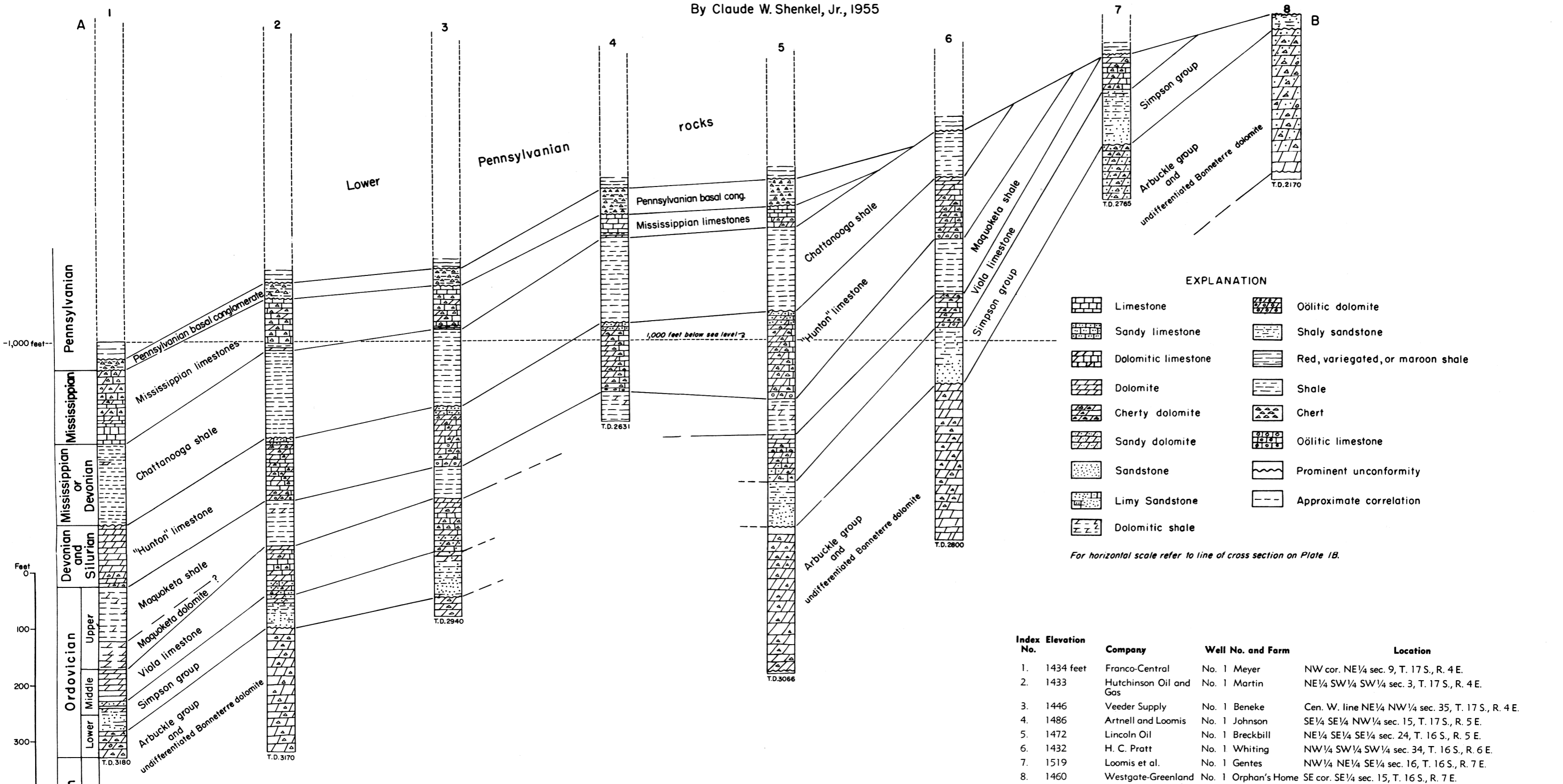


Marion and Dickinson Counties, Kansas

By Claude W. Shenkel, Jr., 1955

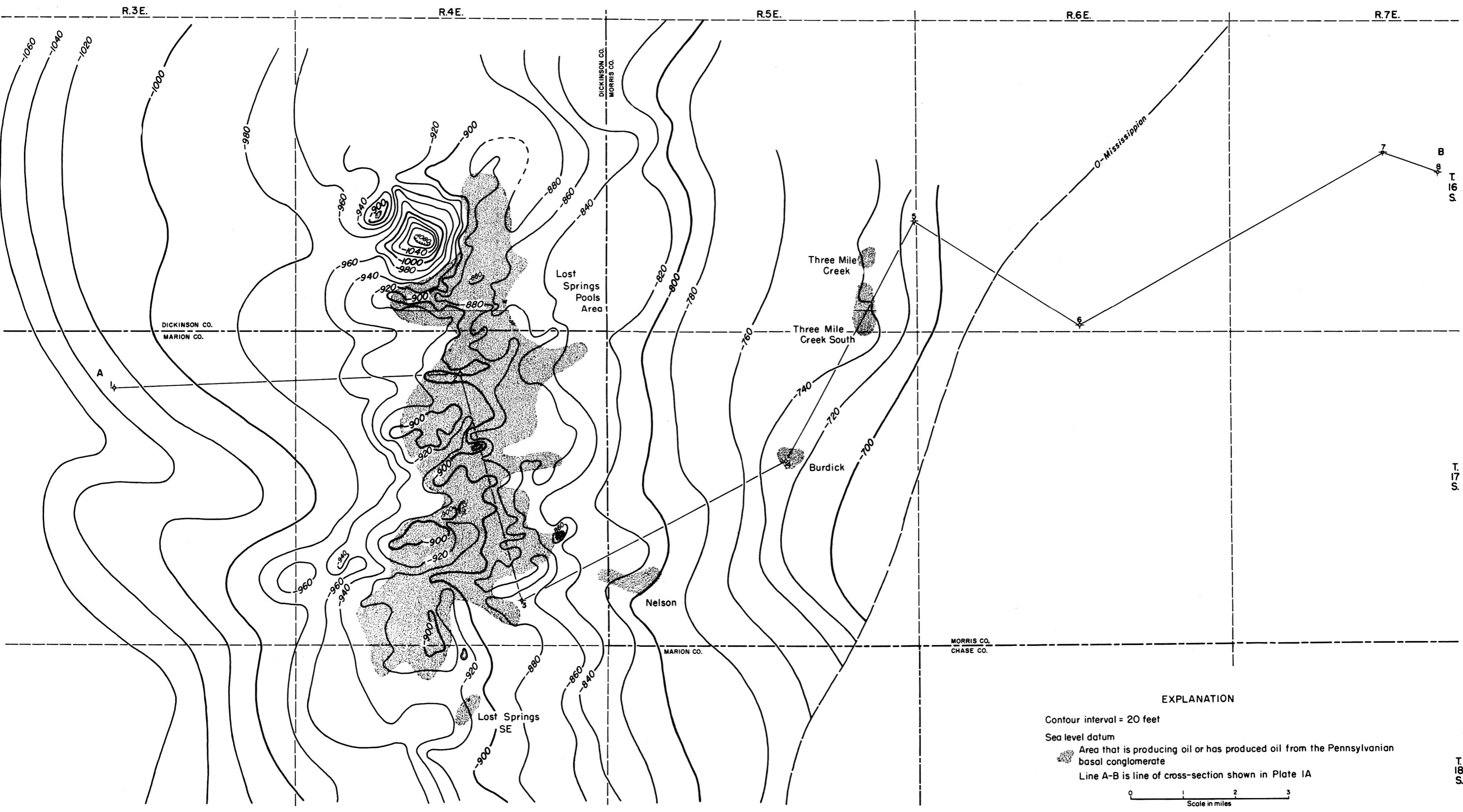


EXPLANATION

	Limestone		Oolitic dolomite
	Sandy limestone		Shaly sandstone
	Dolomitic limestone		Red, variegated, or maroon shale
	Dolomite		Shale
	Cherty dolomite		Chert
	Sandy dolomite		Oolitic limestone
	Sandstone		Prominent unconformity
	Limy sandstone		Approximate correlation
	Dolomitic shale		

For horizontal scale refer to line of cross section on Plate 1B.

Index No.	Elevation	Company	Well No. and Farm	Location
1.	1434 feet	Franco-Central	No. 1 Meyer	NW cor. NE 1/4 sec. 9, T. 17 S., R. 4 E.
2.	1433	Hutchinson Oil and Gas	No. 1 Martin	NE 1/4 SW 1/4 SW 1/4 sec. 3, T. 17 S., R. 4 E.
3.	1446	Veeder Supply	No. 1 Beneke	Gen. W. line NE 1/4 NW 1/4 sec. 35, T. 17 S., R. 4 E.
4.	1486	Artnell and Loomis	No. 1 Johnson	SE 1/4 SE 1/4 NW 1/4 sec. 15, T. 17 S., R. 5 E.
5.	1472	Lincoln Oil	No. 1 Breckbill	NE 1/4 SE 1/4 SE 1/4 sec. 24, T. 16 S., R. 5 E.
6.	1432	H. C. Pratt	No. 1 Whiting	NW 1/4 SW 1/4 SW 1/4 sec. 34, T. 16 S., R. 6 E.
7.	1519	Loomis et al.	No. 1 Gentes	NW 1/4 NE 1/4 SE 1/4 sec. 16, T. 16 S., R. 7 E.
8.	1460	Westgate-Greenland	No. 1 Orphan's Home	SE cor. SE 1/4 sec. 15, T. 16 S., R. 7 E.



EXPLANATION

- Contour interval = 20 feet
- Sea level datum
- Area that is producing oil or has produced oil from the Pennsylvanian basal conglomerate
- Line A-B is line of cross-section shown in Plate 1A

B. Areal structure as shown by contours on top of the Pennsylvanian basal conglomerate