

TRILOBITE
TESTING, INC.

TRANSIENT GAUGE REPORT

Vess Oil

McCord A #4

Licence No:

ATTN:

Test Start: 2002.11.12 @ 08:37:36

GENERAL INFORMATION:

Formation:	Field:	Company Rep:	Trilobite Testing, I
Well Status:		Unit No.:	Paul
Deviated: Yes	Whipstock: ft (CF)	Reference Elevations:	ft (KB)
Shut In Date:			ft (CF)
Perforations:	ft (CF) To	ft (CF) (TVD)	KB to CF: ft
Tubing Press: Initial	psig	Final	psig
Casing Press: Initial	psig	Final	psig
Open Hole:	inches		
Packer Depth:	ft (CF)		

MPP: ft (CF)
Press@MPP: psig
B.H. Temp: deg F
Assumed Gradient: 1 psig/ft

Serial #: 3027

Press@RunDepth:	psig @	ft (CF)	Capacity:	7000 psig
Start Date:	2002.11.12	End Date:	2002.11.17	Last Calib.:
Start Time:	08:37:36	End Time:	08:14:56	Time On Btm:
				Time Off Btm:

TEST COMMENT:

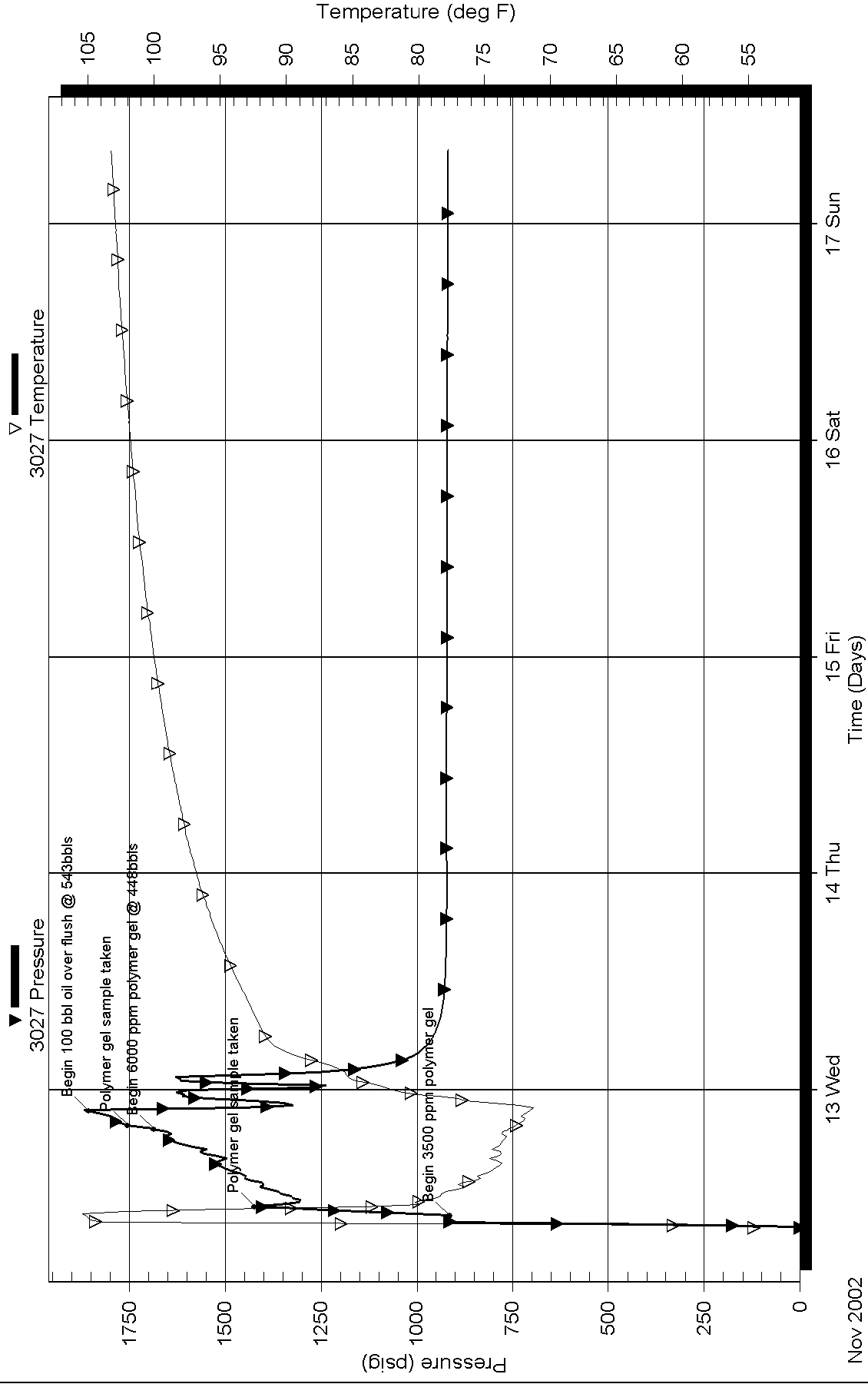
RESULTS SUMMARY

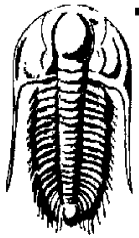
Relative Time (Hours)	Pressure (psig)	Temperature (deg F)	Annotation
626.20696	913.75	105.18	Begin 3500 ppm polymer gel
626.20764	1423.79	82.76	Polymer gel sample taken
626.21360	1686.65	73.13	Begin 6000 ppm polymer gel @ 448bbbls
626.21389	1755.22	72.52	Polymer gel sample taken
626.21501	1856.56	71.57	Begin 100 bbl oil over flush @ 543bbbls

Serial #: 3027

Vess Oil

Pressure vs. Time





TRILOBITE
TESTING, INC.

TRANSIENT GAUGE DATA LISTING

Vess Oil

McCord A #4

Licence No:

ATTN:

Test Start: 2002.11.12 @ 08:37:36

Serial # 3027

Actual Time (Date/Time)	Relative Time (Hours)	Depth (ft)	Pressure (psig)	Temperature (deg F)	Comments
2002.11.12 @ 08:37:37	0.00028		1.12	54.66	
2002.11.12 @ 08:43:36	0.10000		0.76	53.93	
2002.11.12 @ 09:26:56	0.82222		913.75	104.80	
2002.11.12 @ 10:00:16	1.37778		913.75	105.18	
2002.11.12 @ 10:00:36	1.38333		913.75	105.18	
2002.11.12 @ 10:00:56	1.38889		913.75	105.18	Begin 3500 ppm polymer gel
2002.11.12 @ 10:01:16	1.39444		913.75	105.18	
2002.11.12 @ 10:01:36	1.40000		913.73	105.18	
2002.11.12 @ 10:01:56	1.40556		913.73	105.18	
2002.11.12 @ 10:45:16	2.12778		1314.00	91.45	
2002.11.12 @ 10:59:36	2.36667		1418.22	83.01	
2002.11.12 @ 10:59:56	2.37222		1421.09	82.89	
2002.11.12 @ 11:00:16	2.37778		1423.79	82.76	Polymer gel sample taken
2002.11.12 @ 11:00:36	2.38333		1426.40	82.63	
2002.11.12 @ 11:00:56	2.38889		1429.38	82.55	
2002.11.12 @ 11:01:16	2.39444		1431.64	82.43	
2002.11.12 @ 11:44:36	3.11667		1307.89	79.37	
2002.11.12 @ 12:27:56	3.83889		1354.98	78.41	
2002.11.12 @ 13:11:16	4.56111		1411.03	76.44	
2002.11.12 @ 13:54:36	5.28333		1436.05	75.67	
2002.11.12 @ 14:37:56	6.00556		1460.52	74.95	
2002.11.12 @ 15:21:16	6.72778		1508.51	74.06	
2002.11.12 @ 16:04:36	7.45000		1513.21	74.05	
2002.11.12 @ 16:47:56	8.17222		1553.79	73.70	
2002.11.12 @ 17:31:16	8.89444		1571.71	74.10	
2002.11.12 @ 18:14:36	9.61667		1637.76	73.64	
2002.11.12 @ 18:57:56	10.33889		1638.56	73.54	
2002.11.12 @ 19:34:36	10.95000		1685.45	73.13	
2002.11.12 @ 19:34:56	10.95556		1686.09	73.12	
2002.11.12 @ 19:35:16	10.96111		1686.65	73.13	Begin 6000 ppm polymer gel @ 448bbbls
2002.11.12 @ 19:35:36	10.96667		1686.75	73.12	
2002.11.12 @ 19:35:56	10.97222		1686.83	73.11	
2002.11.12 @ 19:36:16	10.97778		1687.73	73.11	

Printing every 130 samples

Serial # 3027

Actual Time (Date/Time)	Relative Time (Hours)	Depth (ft)	Pressure (psig)	Temperature (deg F)	Comments
2002.11.12 @ 19:59:36	11.36667		1754.88	72.56	
2002.11.12 @ 19:59:56	11.37222		1755.36	72.53	
2002.11.12 @ 20:00:16	11.37778		1755.22	72.52	Polymer gel sample taken
2002.11.12 @ 20:00:36	11.38333		1755.24	72.52	
2002.11.12 @ 20:00:56	11.38889		1755.38	72.49	
2002.11.12 @ 20:01:16	11.39444		1755.84	72.50	
2002.11.12 @ 20:44:36	12.11667		1786.85	71.93	
2002.11.12 @ 21:27:56	12.83889		1843.36	71.70	
2002.11.12 @ 21:36:36	12.98333		1855.98	71.58	
2002.11.12 @ 21:36:56	12.98889		1856.26	71.57	
2002.11.12 @ 21:37:16	12.99444		1856.56	71.57	Begin 100 bbl oil over flush @ 543bbls
2002.11.12 @ 21:37:36	13.00000		1856.92	71.56	
2002.11.12 @ 21:37:56	13.00556		1856.86	71.55	
2002.11.12 @ 21:38:16	13.01111		1858.92	71.54	
2002.11.12 @ 22:21:36	13.73333		1266.62	73.73	
2002.11.12 @ 23:04:56	14.45556		1598.17	77.91	
2002.11.12 @ 23:48:16	15.17778		1630.21	81.69	
2002.11.13 @ 00:31:36	15.90000		1416.38	83.33	
2002.11.13 @ 01:14:56	16.62222		1624.52	85.26	
2002.11.13 @ 01:58:16	17.34444		1223.70	85.72	
2002.11.13 @ 02:41:36	18.06667		1085.09	86.91	
2002.11.13 @ 03:24:56	18.78889		1025.23	88.66	
2002.11.13 @ 04:08:16	19.51111		993.39	90.11	
2002.11.13 @ 04:51:36	20.23333		973.82	90.94	
2002.11.13 @ 05:34:56	20.95556		960.70	91.45	
2002.11.13 @ 06:18:16	21.67778		951.25	91.78	
2002.11.13 @ 07:01:36	22.40000		944.32	92.03	
2002.11.13 @ 07:44:56	23.12222		939.09	92.23	
2002.11.13 @ 08:28:16	23.84444		934.99	92.49	
2002.11.13 @ 09:11:36	24.56667		931.88	92.72	
2002.11.13 @ 09:54:56	25.28889		929.44	92.97	
2002.11.13 @ 10:38:16	26.01111		927.58	93.20	
2002.11.13 @ 11:21:36	26.73333		926.15	93.48	
2002.11.13 @ 12:04:56	27.45556		924.99	93.71	
2002.11.13 @ 12:48:16	28.17778		924.14	93.94	
2002.11.13 @ 13:31:36	28.90000		923.38	94.19	
2002.11.13 @ 14:14:56	29.62222		922.94	94.41	
2002.11.13 @ 14:58:16	30.34444		922.46	94.63	
2002.11.13 @ 15:41:36	31.06667		922.11	94.84	
2002.11.13 @ 16:24:56	31.78889		921.81	95.02	
2002.11.13 @ 17:08:16	32.51111		921.55	95.22	
Printing every 130 samples					

Serial # 3027

Actual Time (Date/Time)	Relative Time (Hours)	Depth (ft)	Pressure (psig)	Temperature (deg F)	Comments
2002.11.13 @ 17:51:36	33.23333		921.31	95.43	
2002.11.13 @ 18:34:56	33.95556		920.89	95.62	
2002.11.13 @ 19:18:16	34.67778		920.77	95.78	
2002.11.13 @ 20:01:36	35.40000		920.69	95.95	
2002.11.13 @ 20:44:56	36.12222		920.65	96.11	
2002.11.13 @ 21:28:16	36.84445		920.67	96.32	
2002.11.13 @ 22:11:36	37.56667		920.65	96.47	
2002.11.13 @ 22:54:56	38.28889		920.65	96.60	
2002.11.13 @ 23:38:16	39.01111		920.63	96.75	
2002.11.14 @ 00:21:36	39.73333		920.67	96.90	
2002.11.14 @ 01:04:56	40.45555		920.67	97.02	
2002.11.14 @ 01:48:16	41.17778		920.73	97.16	
2002.11.14 @ 02:31:36	41.90000		920.83	97.29	
2002.11.14 @ 03:14:56	42.62222		920.89	97.43	
2002.11.14 @ 03:58:16	43.34445		920.95	97.56	
2002.11.14 @ 04:41:36	44.06667		920.97	97.65	
2002.11.14 @ 05:24:56	44.78889		921.01	97.76	
2002.11.14 @ 06:08:16	45.51111		921.07	97.86	
2002.11.14 @ 06:51:36	46.23333		921.13	97.98	
2002.11.14 @ 07:34:56	46.95555		921.21	98.07	
2002.11.14 @ 08:18:16	47.67778		921.37	98.16	
2002.11.14 @ 09:01:36	48.40000		921.39	98.27	
2002.11.14 @ 09:44:56	49.12222		921.45	98.37	
2002.11.14 @ 10:28:16	49.84445		921.41	98.46	
2002.11.14 @ 11:11:36	50.56667		921.43	98.57	
2002.11.14 @ 11:54:56	51.28889		921.35	98.67	
2002.11.14 @ 12:38:16	52.01111		921.27	98.75	
2002.11.14 @ 13:21:36	52.73333		921.17	98.85	
2002.11.14 @ 14:04:56	53.45555		921.11	98.95	
2002.11.14 @ 14:48:16	54.17778		921.05	99.03	
2002.11.14 @ 15:31:36	54.90000		920.93	99.12	
2002.11.14 @ 16:14:56	55.62222		920.85	99.19	
2002.11.14 @ 16:58:16	56.34445		920.75	99.28	
2002.11.14 @ 17:41:36	57.06667		920.69	99.36	
2002.11.14 @ 18:24:56	57.78889		920.59	99.44	
2002.11.14 @ 19:08:16	58.51111		920.51	99.50	
2002.11.14 @ 19:51:36	59.23333		920.47	99.59	
2002.11.14 @ 20:34:56	59.95555		920.38	99.66	
2002.11.14 @ 21:18:16	60.67778		920.28	99.74	
2002.11.14 @ 22:01:36	61.40000		920.22	99.81	
2002.11.14 @ 22:44:56	62.12222		920.16	99.90	
Printing every 130 samples					

Serial # 3027

Actual Time (Date/Time)	Relative Time (Hours)	Depth (ft)	Pressure (psig)	Temperature (deg F)	Comments
2002.11.14 @ 23:28:16	62.84445		920.08	99.96	
2002.11.15 @ 00:11:36	63.56667		920.00	100.05	
2002.11.15 @ 00:54:56	64.28889		919.98	100.11	
2002.11.15 @ 01:38:16	65.01111		919.90	100.17	
2002.11.15 @ 02:21:36	65.73333		919.88	100.23	
2002.11.15 @ 03:04:56	66.45555		919.80	100.28	
2002.11.15 @ 03:48:16	67.17778		919.76	100.35	
2002.11.15 @ 04:31:36	67.90000		919.72	100.46	
2002.11.15 @ 05:14:56	68.62222		919.66	100.52	
2002.11.15 @ 05:58:16	69.34444		919.62	100.56	
2002.11.15 @ 06:41:36	70.06667		919.58	100.64	
2002.11.15 @ 07:24:56	70.78889		919.54	100.69	
2002.11.15 @ 08:08:16	71.51111		919.50	100.74	
2002.11.15 @ 08:51:36	72.23333		919.44	100.80	
2002.11.15 @ 09:34:56	72.95556		919.40	100.83	
2002.11.15 @ 10:18:16	73.67778		919.38	100.89	
2002.11.15 @ 11:01:36	74.40000		919.34	100.97	
2002.11.15 @ 11:44:56	75.12222		919.32	101.02	
2002.11.15 @ 12:28:16	75.84444		919.46	101.09	
2002.11.15 @ 13:11:36	76.56667		919.34	101.17	
2002.11.15 @ 13:54:56	77.28889		919.26	101.20	
2002.11.15 @ 14:38:16	78.01111		919.20	101.25	
2002.11.15 @ 15:21:36	78.73333		919.18	101.28	
2002.11.15 @ 16:04:56	79.45556		919.14	101.34	
2002.11.15 @ 16:48:16	80.17778		919.12	101.36	
2002.11.15 @ 17:31:36	80.90000		919.12	101.40	
2002.11.15 @ 18:14:56	81.62222		919.08	101.44	
2002.11.15 @ 18:58:16	82.34444		919.06	101.48	
2002.11.15 @ 19:41:36	83.06667		919.04	101.54	
2002.11.15 @ 20:24:56	83.78889		919.00	101.58	
2002.11.15 @ 21:08:16	84.51111		919.00	101.62	
2002.11.15 @ 21:51:36	85.23333		919.00	101.67	
2002.11.15 @ 22:34:56	85.95556		918.98	101.71	
2002.11.15 @ 23:18:16	86.67778		918.96	101.76	
2002.11.16 @ 00:01:36	87.40000		918.94	101.81	
2002.11.16 @ 00:44:56	88.12222		918.94	101.84	
2002.11.16 @ 01:28:16	88.84444		918.94	101.87	
2002.11.16 @ 02:11:36	89.56667		918.94	101.92	
2002.11.16 @ 02:54:56	90.28889		918.92	101.94	
2002.11.16 @ 03:38:16	91.01111		918.92	101.99	
2002.11.16 @ 04:21:36	91.73333		918.92	102.02	
Printing every 130 samples					

Serial # 3027

Actual Time (Date/Time)	Relative Time (Hours)	Depth (ft)	Pressure (psig)	Temperature (deg F)	Comments
2002.11.16 @ 05:04:56	92.45556		918.90	102.08	
2002.11.16 @ 05:48:16	93.17778		918.88	102.10	
2002.11.16 @ 06:31:36	93.90000		918.89	102.15	
2002.11.16 @ 07:14:56	94.62222		918.86	102.18	
2002.11.16 @ 07:58:16	95.34444		918.84	102.21	
2002.11.16 @ 08:41:36	96.06667		918.86	102.24	
2002.11.16 @ 09:24:56	96.78889		918.82	102.28	
2002.11.16 @ 10:08:16	97.51111		918.83	102.32	
2002.11.16 @ 10:51:36	98.23333		918.82	102.36	
2002.11.16 @ 11:34:56	98.95556		918.78	102.40	
2002.11.16 @ 12:18:16	99.67778		918.76	102.43	
2002.11.16 @ 13:01:36	100.40000		918.74	102.48	
2002.11.16 @ 13:44:56	101.12222		918.74	102.51	
2002.11.16 @ 14:28:16	101.84444		918.74	102.53	
2002.11.16 @ 15:11:36	102.56667		918.74	102.57	
2002.11.16 @ 15:54:56	103.28889		918.74	102.62	
2002.11.16 @ 16:38:16	104.01111		918.72	102.64	
2002.11.16 @ 17:21:36	104.73333		918.72	102.68	
2002.11.16 @ 18:04:56	105.45556		918.70	102.68	
2002.11.16 @ 18:48:16	106.17778		918.68	102.69	
2002.11.16 @ 19:31:36	106.90000		918.66	102.74	
2002.11.16 @ 20:14:56	107.62222		918.62	102.77	
2002.11.16 @ 20:58:16	108.34444		918.62	102.81	
2002.11.16 @ 21:41:36	109.06667		918.58	102.83	
2002.11.16 @ 22:24:56	109.78889		918.60	102.86	
2002.11.16 @ 23:08:16	110.51111		918.56	102.89	
2002.11.16 @ 23:51:36	111.23333		918.56	102.92	
2002.11.17 @ 00:34:56	111.95556		918.54	102.95	
2002.11.17 @ 01:18:16	112.67778		918.56	102.98	
2002.11.17 @ 02:01:36	113.40000		918.54	103.01	
2002.11.17 @ 02:44:56	114.12222		918.54	103.02	
2002.11.17 @ 03:28:16	114.84444		918.52	103.05	
2002.11.17 @ 04:11:36	115.56667		918.50	103.09	
2002.11.17 @ 04:54:56	116.28889		918.50	103.12	
2002.11.17 @ 05:38:16	117.01111		918.50	103.15	
2002.11.17 @ 06:21:36	117.73333		918.48	103.17	
2002.11.17 @ 07:04:56	118.45556		918.50	103.21	
2002.11.17 @ 07:48:16	119.17778		918.46	103.24	
2002.11.17 @ 08:14:56	119.62222		918.44	103.26	

Printing every 130 samples