

TRILOBITE
TESTING, INC.

TRANSIENT GAUGE REPORT

Murfin Drilling Co Inc

Hadley A-3

Hadley A-3

Licence No:

ATTN:

Test Start: 2002.10.18 @ 15:14:36

GENERAL INFORMATION:

Formation: Field: Bemis-Shutts

Company Rep:

Well Status:

Unit No.:

Deviated: Yes Whipstock: ft (CF)

Reference Elevations: ft (KB)

Shut In Date:

ft (CF)

Perforations: ft (CF) To ft (CF) (TVD)

KB to CF: ft

Tubing Press: Initial psig Final psig inches @ ft (CF)

MPP: ft (CF)

Casing Press: Initial psig Final psig inches @ ft (CF)

Press@MPP: psig

Open Hole: inches

B.H. Temp: deg F

Packer Depth: ft (CF)

Assumed Gradient: 1 psig/ft

Serial #: 2346 Top

Press@RunDepth: psig @ ft (CF)

Capacity: 7000 psig

Start Date: 2002.10.18 End Date: 2002.10.28

Last Calib.:

Start Time: 15:14:36 End Time: 10:34:36

Time On Btm:

Time Off Btm:

TEST COMMENT:

RESULTS SUMMARY

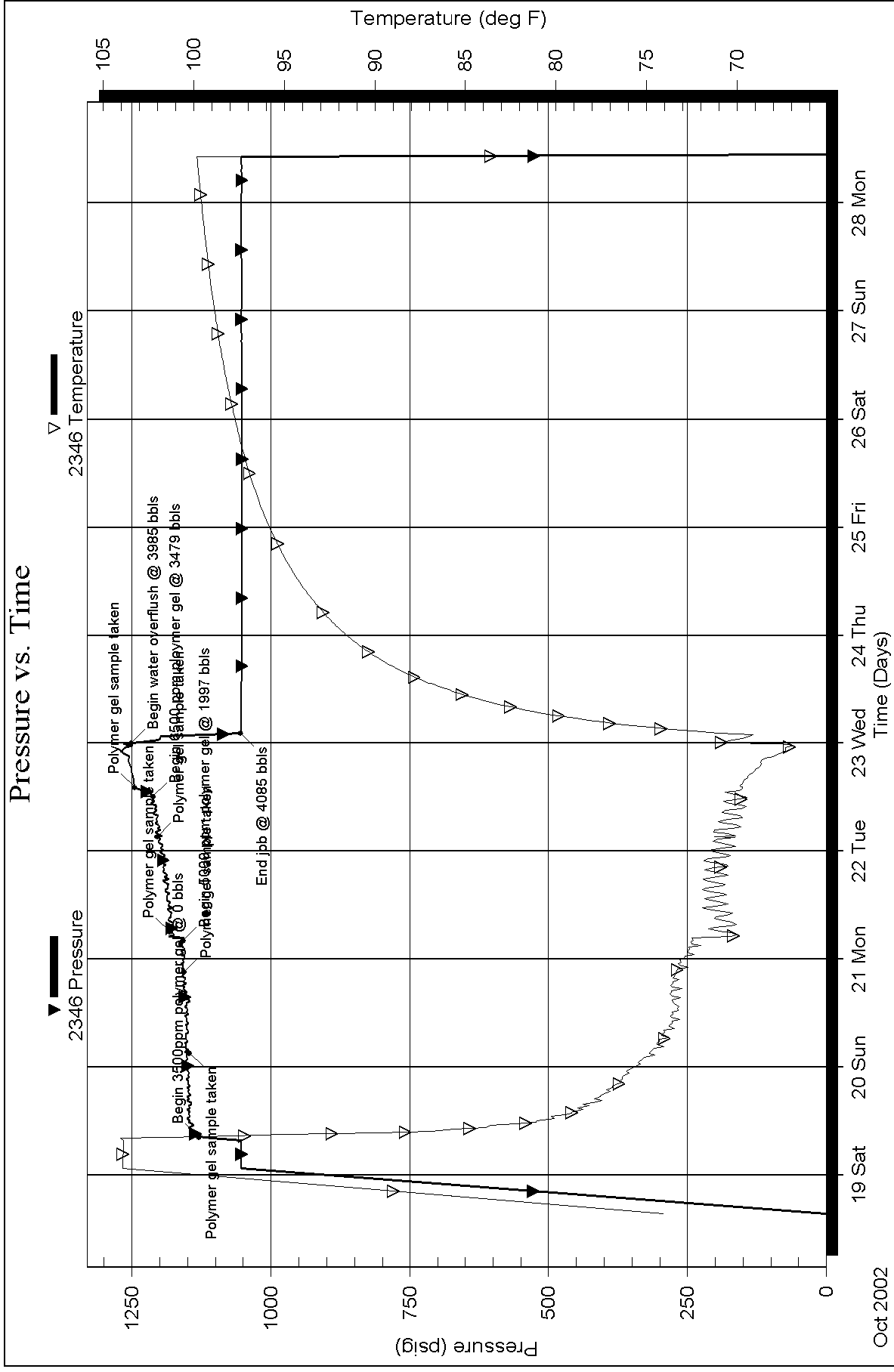
Relative Time (Hours)	Pressure (psig)	Temperature (deg F)	Annotation
625.80584	1129.68	99.42	Begin 3500ppm polymer gel @ 0 bbls
625.81875	1146.94	74.83	Polymer gel sample taken
625.83125	1155.92	73.39	Polymer gel sample taken
625.83611	1158.30	72.42	Begin 5000 ppm polymer gel @ 1997 bbls
625.83750	1182.65	71.07	Polymer gel sample taken
625.85208	1204.30	71.27	Polymer gel sample taken
625.85833	1211.73	69.76	Begin 6500 ppm ploymer gel @ 3479 bbls
625.85972	1244.98	69.74	Polymer gel sample taken
625.86655	1251.21	70.93	Begin w water overflush @ 3985 bbls
625.86806	1054.84	70.99	End job @ 4085 bbls

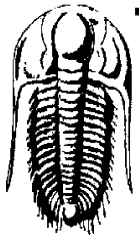
Serial #: 2346

Top

Murfin Drilling Co Inc

Hadley A-3





TRILOBITE
TESTING, INC.

TRANSIENT GAUGE DATA LISTING

Murfin Drilling Co Inc

Hadley A-3

Hadley A-3

Licence No:

ATTN:

Test Start: 2002.10.18 @ 15:14:36

Serial # 2346 Top

Actual Time (Date/Time)	Relative Time (Hours)	Depth (ft)	Pressure (psig)	Temperature (deg F)	Comments
2002.10.18 @ 15:14:41	0.00139		1.35	74.08	
2002.10.19 @ 08:23:21	17.14583		1129.10	99.73	
2002.10.19 @ 08:24:06	17.15833		1129.30	99.56	
2002.10.19 @ 08:24:51	17.17083		1129.68	99.42	Begin 3500ppm polymer gel @ 0 bbls
2002.10.19 @ 08:25:36	17.18333		1129.52	99.28	
2002.10.19 @ 08:26:21	17.19583		1129.82	99.14	
2002.10.19 @ 08:27:06	17.20833		1129.88	98.98	
2002.10.19 @ 14:28:36	23.23333		1150.67	78.54	
2002.10.19 @ 20:30:06	29.25833		1151.97	76.12	
2002.10.20 @ 02:31:36	35.28333		1155.26	74.97	
2002.10.20 @ 02:58:36	35.73333		1148.57	74.81	
2002.10.20 @ 02:59:21	35.74583		1148.73	74.82	
2002.10.20 @ 03:00:06	35.75833		1146.94	74.83	Polymer gel sample taken
2002.10.20 @ 03:00:51	35.77083		1146.92	74.84	
2002.10.20 @ 03:01:36	35.78333		1147.52	74.86	
2002.10.20 @ 03:02:21	35.79583		1149.23	74.82	
2002.10.20 @ 09:03:51	41.82083		1151.61	73.30	
2002.10.20 @ 15:05:21	47.84583		1148.11	73.61	
2002.10.20 @ 20:58:36	53.73333		1153.75	73.41	
2002.10.20 @ 20:59:21	53.74583		1155.74	73.40	
2002.10.20 @ 21:00:06	53.75833		1155.92	73.39	Polymer gel sample taken
2002.10.20 @ 21:00:51	53.77083		1157.22	73.39	
2002.10.20 @ 21:01:36	53.78333		1157.50	73.37	
2002.10.20 @ 21:02:21	53.79583		1156.80	73.36	
2002.10.21 @ 03:03:51	59.82083		1161.78	72.66	
2002.10.21 @ 03:58:36	60.73333		1160.48	72.41	
2002.10.21 @ 03:59:21	60.74583		1158.88	72.41	
2002.10.21 @ 04:00:06	60.75833		1158.30	72.42	Begin 5000 ppm polymer gel @ 1997 bbls
2002.10.21 @ 04:00:51	60.77083		1157.64	72.41	
2002.10.21 @ 04:01:36	60.78333		1158.36	72.41	
2002.10.21 @ 04:02:21	60.79583		1158.18	72.42	
2002.10.21 @ 05:58:36	62.73333		1183.45	71.21	
2002.10.21 @ 05:59:21	62.74583		1183.85	71.14	

Printing every 482 samples

Serial # 2346 Top					
Actual Time (Date/Time)	Relative Time (Hours)	Depth (ft)	Pressure (psig)	Temperature (deg F)	Comments
2002.10.21 @ 06:00:06	62.75833		1182.65	71.07	Polymer gel sample taken
2002.10.21 @ 06:00:51	62.77083		1182.79	70.98	
2002.10.21 @ 06:01:36	62.78333		1181.69	70.87	
2002.10.21 @ 06:02:21	62.79583		1181.49	70.78	
2002.10.21 @ 12:03:51	68.82083		1185.26	70.77	
2002.10.21 @ 18:05:21	74.84583		1184.23	71.80	
2002.10.22 @ 00:06:51	80.87083		1200.78	71.19	
2002.10.22 @ 02:58:36	83.73333		1200.94	71.30	
2002.10.22 @ 02:59:21	83.74583		1202.70	71.29	
2002.10.22 @ 03:00:06	83.75833		1204.30	71.27	Polymer gel sample taken
2002.10.22 @ 03:00:51	83.77083		1204.72	71.20	
2002.10.22 @ 03:01:36	83.78333		1204.72	71.13	
2002.10.22 @ 03:02:21	83.79583		1205.62	71.06	
2002.10.22 @ 09:03:51	89.82083		1207.13	69.76	
2002.10.22 @ 11:58:36	92.73333		1215.12	69.92	
2002.10.22 @ 11:59:21	92.74583		1213.79	69.85	
2002.10.22 @ 12:00:06	92.75833		1211.73	69.76	Begin 6500 ppm ploymer gel @ 3479 bbls
2002.10.22 @ 12:00:51	92.77083		1211.21	69.71	
2002.10.22 @ 12:01:36	92.78333		1210.13	69.64	
2002.10.22 @ 12:02:21	92.79583		1208.97	69.60	
2002.10.22 @ 13:58:36	94.73333		1242.39	69.57	
2002.10.22 @ 13:59:21	94.74583		1243.46	69.67	
2002.10.22 @ 14:00:06	94.75833		1244.98	69.74	Polymer gel sample taken
2002.10.22 @ 14:00:51	94.77083		1245.60	69.78	
2002.10.22 @ 14:01:36	94.78333		1244.98	69.80	
2002.10.22 @ 14:02:21	94.79583		1244.80	69.80	
2002.10.22 @ 20:03:51	100.82083		1251.55	68.15	
2002.10.22 @ 23:48:06	104.55833		1254.25	70.95	
2002.10.22 @ 23:48:51	104.57083		1252.77	70.98	
2002.10.22 @ 23:49:36	104.58333		1251.21	70.93	Begin w ater overflush @ 3985 bbls
2002.10.22 @ 23:50:21	104.59583		1250.36	70.84	
2002.10.22 @ 23:51:06	104.60833		1249.24	70.87	
2002.10.22 @ 23:51:51	104.62083		1246.98	70.99	
2002.10.23 @ 01:58:36	106.73333		1055.10	70.89	
2002.10.23 @ 01:59:21	106.74583		1054.96	70.94	
2002.10.23 @ 02:00:06	106.75833		1054.84	70.99	End job @ 4085 bbls
2002.10.23 @ 02:00:51	106.77083		1054.72	71.04	
2002.10.23 @ 02:01:36	106.78333		1054.62	71.10	
2002.10.23 @ 02:02:21	106.79583		1054.52	71.13	
2002.10.23 @ 08:03:51	112.82083		1052.95	82.79	
2002.10.23 @ 14:05:21	118.84583		1052.75	87.57	
Printing every 482 samples					

Serial # 2346 Top

Actual Time (Date/Time)	Relative Time (Hours)	Depth (ft)	Pressure (psig)	Temperature (deg F)	Comments
2002.10.23 @ 20:06:51	124.87083		1052.71	90.34	
2002.10.24 @ 02:08:21	130.89583		1052.53	92.19	
2002.10.24 @ 08:09:51	136.92083		1052.47	93.54	
2002.10.24 @ 14:11:21	142.94583		1052.43	94.57	
2002.10.24 @ 20:12:51	148.97083		1052.41	95.40	
2002.10.25 @ 03:54:36	156.66667		1052.37	96.25	
2002.10.25 @ 11:56:36	164.70000		1052.35	96.94	
2002.10.25 @ 19:58:36	172.73333		1052.49	97.50	
2002.10.26 @ 04:00:36	180.76667		1052.47	97.98	
2002.10.26 @ 12:02:36	188.80000		1052.65	98.36	
2002.10.26 @ 20:04:36	196.83333		1052.79	98.71	
2002.10.27 @ 04:06:36	204.86667		1052.73	99.01	
2002.10.27 @ 12:08:36	212.90000		1052.81	99.26	
2002.10.27 @ 20:10:36	220.93333		1052.81	99.49	
2002.10.28 @ 04:12:36	228.96667		1052.75	99.69	
2002.10.28 @ 10:34:36	235.33333		0.56	62.57	

Printing every 482 samples