

Figure 3. CDP-stacked seismic sections from (a) Wilson Road (southern portion), (b) Wilson Road (northern portion), and (c) Rice Park, which had a 50dB/sec spherical divergence correction applied pre-stack.

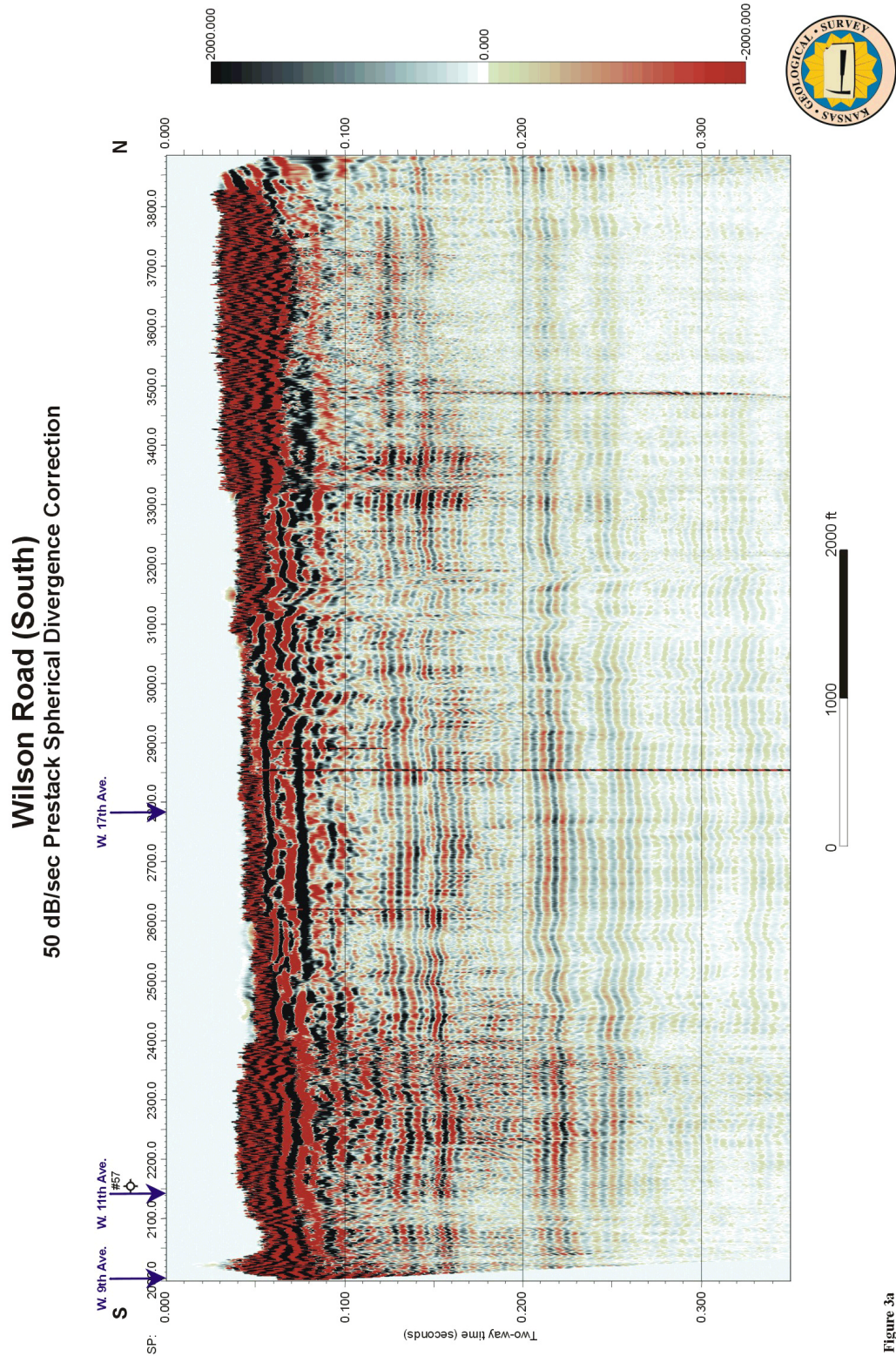


Figure 3a

Wilson Road (North) 50 dB/sec Prestack Spherical Divergence Correction

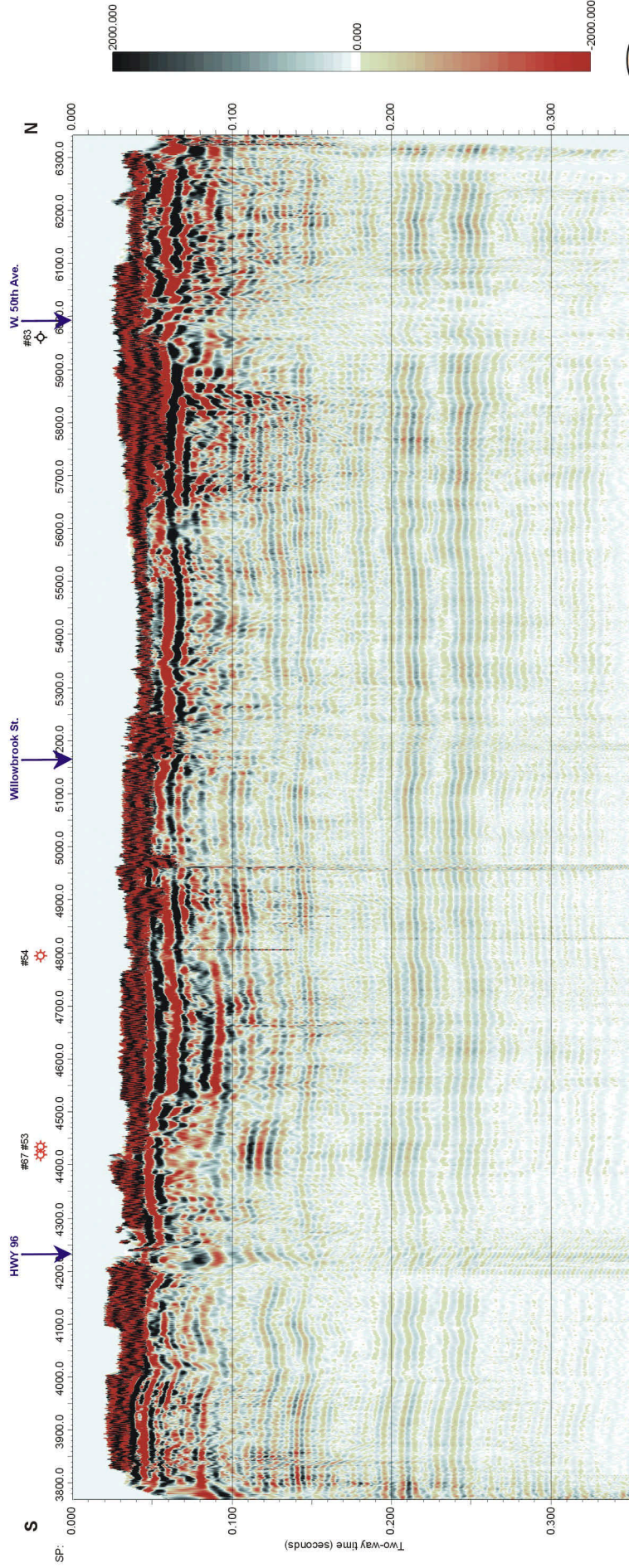


Figure 3b.

Rice Park

50 dB/sec Prestack Spherical Divergence Correction

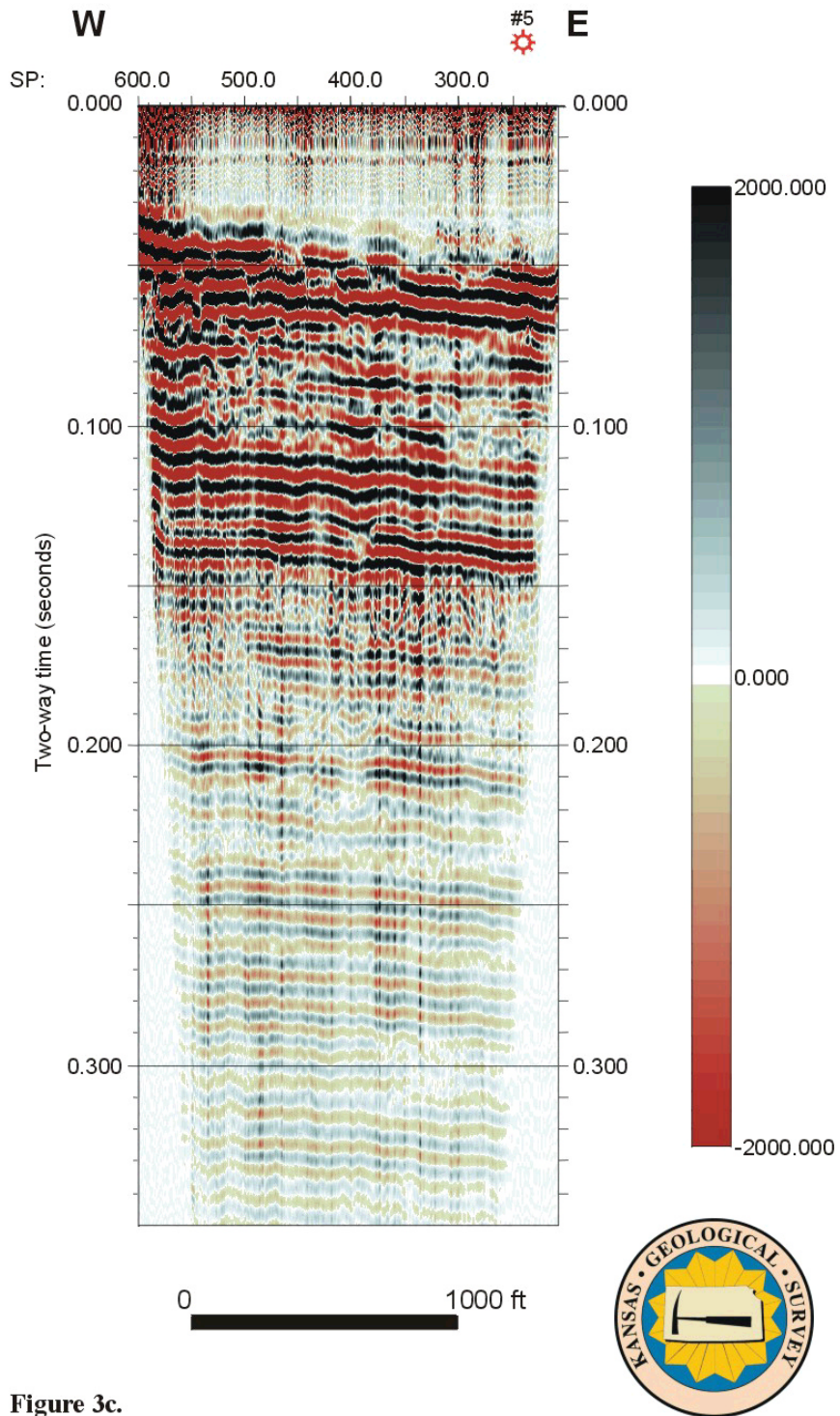


Figure 3c.