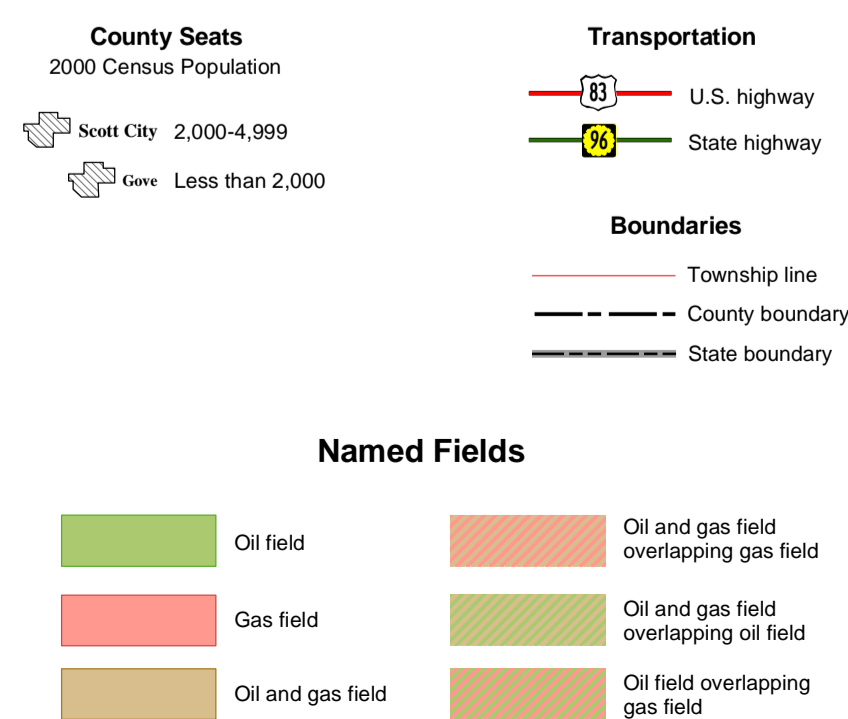


### Map Legend



SCALE 1:250,000  
(1 INCH EQUALS APPROXIMATELY 4 MILES)

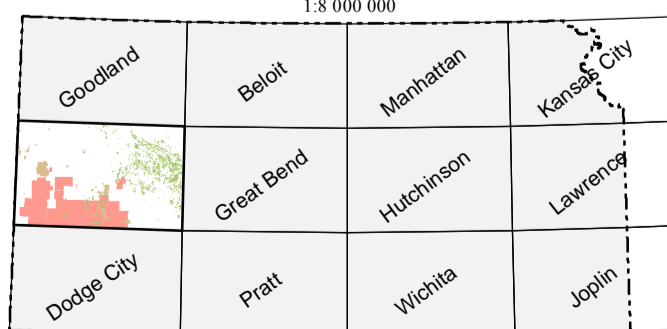
2 0 2 4 6 8 10 MILES  
2 0 2 4 6 8 10 KILOMETERS

LAMBERT CONFORMAL CONIC PROJECTION  
WITH STANDARD PARALLELS AT 35° AND 45°N  
CENTRAL MERIDIAN 97°W  
NORTH AMERICAN DATUM OF 1983



APPROXIMATE MEAN DECLINATION, 2009

### Location Diagram



### Section Index

6	5	4	3	2	1
7	8	9	10	11	12
18	17	16	15	14	13
19	20	21	22	23	24
30	29	28	27	26	25
31	32	33	34	35	36

This map was prepared by the staff of the Kansas Geological Survey and is based on Oil and Gas Fields, Scott City quadrangle in Kansas (1989) and subsequent revisions with the same name (1990 and 1993). Oil and gas field status is current as of June 1, 2009. Listings of fields by location, name, and cumulative production are found in the Survey's interactive oil and gas map viewer located at <http://maps.kgs.ku.edu/oilgas/index.cfm>. For viewer instructions, click on the "Help" tab at the top of the page. Due to frequent data updates, field and production area boundaries may differ slightly from those shown on this map. All named fields are shown without differentiation between active and inactive. Areas of natural gas production from coal are not included on this map.

As set forth in Kansas Administrative Rule 82-3-102, field boundaries and names are determined by the Kansas Corporation Commission after considering the recommendations of the Conservation Division, Kansas Corporation Commission and the Nomenclature Committee, Kansas Geological Society.

Roads and highway are shown on the map as represented by data from the Kansas Department of Transportation (KDOT) and other sources.

This map was produced using the ArcGIS system developed by Environmental Systems Research Institute, Inc. (ESRI).

Computer compilation and cartography by Richard B. Jarvis, Dan S. Gertsens II, and John W. Dunham. Digital data compilation by Michael J. Killian.

The Kansas Geological Survey does not guarantee this map to be free from errors or inaccuracies and disclaims any responsibility or liability for interpretations made from the map or decisions based thereon.

### References

- Ross, J. A., Lee, S. P., and Beene, D. L. (compilers), 1993, Oil and gas fields, Scott City quadrangle in Kansas: Kansas Geological Survey, Map M-34-8, scale 1:250,000.
- Ross, J. A., and Wong, R. K.-W., (compilers), 1989, Oil and gas fields, Scott City quadrangle in Kansas: Kansas Geological Survey, Map M-18-8, scale 1:250,000.
- Ross, J. A., and Wong, R. K.-W., (compilers), 1990, Oil and gas fields, Scott City quadrangle in Kansas: Kansas Geological Survey, Map M-22-8, scale 1:250,000.

### Suggested reference to this map:

Kansas Geological Survey, 2009, Oil and gas fields, Scott City quadrangle in Kansas: Kansas Geological Survey, Map M-121-8, scale 1:250,000.

Computer compilation and cartography by the Kansas Geological Survey's Cartographic Services unit. For purchase information, or for information about other KGS maps or publications, please call

**Publication Sales**  
(785) 864-2157

**Wichita Well Sample Library**  
(316) 943-2343 x200

or visit the Kansas Geological Survey website at [www.kgs.ku.edu](http://www.kgs.ku.edu)