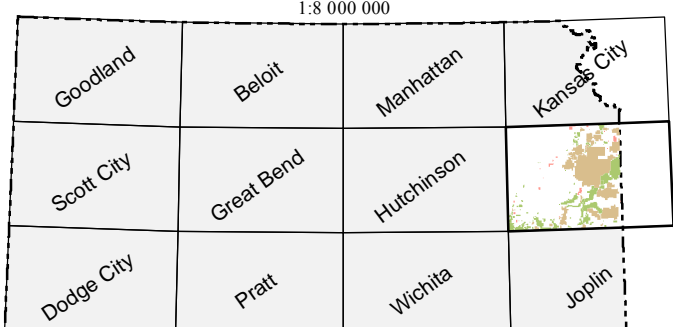


Section Index

6	5	4	3	2	1
7	8	9	10	11	12
18	17	16	15	14	13
19	20	21	22	23	24
30	29	28	27	26	25
31	32	33	34	35	36

Location Diagram

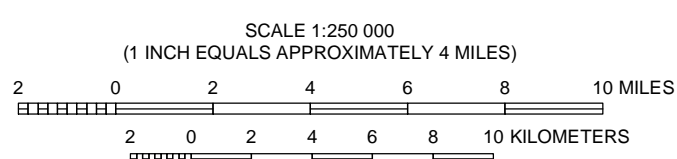


Map Legend

County Seats 2000 Census Population	Transportation
TOPEKA 100,000-999,999	Interstate highway
Lawrence 50,000-99,999	Kansas Turnpike
Ottawa 10,000-24,999	U.S. highway
Paola 5,000-9,999	State highway
Garnett 2,000-4,999	
Lyndon Less than 2,000	
	Boundaries
	Township Line
	County boundary
	State boundary

Named Fields

Oil field
Gas field
Oil and gas field
Oil and gas field overlapping oil field



LAMBERT CONFORMAL CONIC PROJECTION
WITH STANDARD PARALLELS AT 33° AND 45°N
CENTRAL MERIDIAN 95°15' W
NORTH AMERICAN DATUM OF 1983



APPROXIMATE MEAN DECLINATION, 2009

This map was prepared by the staff of the Kansas Geological Survey and is based on Oil and Gas Fields, Lawrence quadrangle in Kansas (1989) and subsequent revisions with the same name (1990 and 1993). Oil or gas field status is current as of June 1, 2009. Listings of fields by location, name, and cumulative production are found in the Survey's interactive oil and gas map viewer located at <http://maps.kgs.ku.edu/oilgas/index.cfm>. For viewer instructions, click on the "Help" tab at the top of the page. Due to frequent data updates, field and production area boundaries may differ slightly from those shown on this map. All named fields are shown without differentiation between active and inactive. Areas of natural gas production from coal are not included on this map.

As set forth in Kansas Administrative Rule 82-3-102, field boundaries and names are determined by the Kansas Corporation Commission after considering the recommendations of the Conservation Division, Kansas Corporation Commission and the Nomenclature Committee, Kansas Geological Society.

Roads and highway are shown on the map as represented by data from the Kansas Department of Transportation (KDOT) and other sources.

This map was produced using the ArcGIS system developed by Environmental Systems Research Institute, Inc. (ESRI).

Computer compilation and cartography by Richard B. Jarvis, Dan S. Gertsema II, and John W. Dunham. Digital data compilation by Michael J. Killian.

The Kansas Geological Survey does not guarantee this map to be free from errors or inaccuracies and disclaims any responsibility or liability for interpretations made from the map or decisions based thereon.

References

- Ross, J. A., Lee, S. P., and Beene, D. L. (compilers), 1993, Oil and gas fields, Lawrence quadrangle in Kansas: Kansas Geological Survey, Map M-34-5, scale 1:250,000.
- Ross, J. A., and Wong, R. K.-W., (compilers), 1989, Oil and gas fields, Lawrence quadrangle in Kansas: Kansas Geological Survey, Map M-18-5, scale 1:250,000.
- Ross, J. A., and Wong, R. K.-W., (compilers), 1990, Oil and gas fields, Lawrence quadrangle in Kansas: Kansas Geological Survey, Map M-22-5, scale 1:250,000.

Suggested reference to this map:

Kansas Geological Survey, 2009, Oil and gas fields, Lawrence quadrangle in Kansas: Kansas Geological Survey, Map M-121-5, scale 1:250,000.

Computer compilation and cartography by the Kansas Geological Survey's Cartographic Services unit. For purchase information, or for information about other KGS maps or publications, please call

Publication Sales
(785) 864-2157

Wichita Well Sample Library
(316) 943-2343 x200

or visit the Kansas Geological Survey website at www.kgs.ku.edu