



**MICRO RESISTIVITY LOG**

Company		Castle Resources, Inc.	
Well	Joan #1	Field	Wildcat
County	Pawnee	State	KS
Location:	680' FNL & 1780' FWL		API #: 15 145 21701
Permanent Datum	SEC 19 TWP 20S RGE 18W	Ground Level	Elevation 2163'
Log Measured From	KB 5' AGL	Drilling Measured From	KB
Date		2-17-13	Other Services
Run Number	Two	Elevation	ML DIL
Depth Driller	4150'	K.B. 2168'	D.F. 2167'
Depth Logger	4153'	G.L. 2163'	
Bottom Logged Interval	4151'		
Top Log Interval	3900'		
Casing Driller	380'		
Casing Logger	380'		
Bit Size	7 7/8"		
Type Fluid in Hole	Chemical Mud		
Density / Viscosity	8.9/62		
pH / Fluid Loss	10.0/9.6		
Source of Sample	Pit		
Rm @ Meas. Temp	.35@75degf		
Rmf @ Meas. Temp	.26@75degf		
Rmc @ Meas. Temp	.42@75degf		
Source of Rmf / Rmc	Calculated		
Rm @ BHT	23@112degf		
Time Circulation Stopped	12:30 p.m.		
Time Logger on Bottom	4:30 p.m.		
Maximum Recorded Temperature	112 degf		
Equipment Number	T045		
Location	Heys, KS		
Recorded By	Gus Planensiel		
Witnessed By	Mr. Jerry Green		

<<< Fold Here >>>

All interpretations are opinions based on inferences from electrical or other measurements and we cannot and do not guarantee the accuracy or correctness of any interpretation, and we shall not, except in the case of gross or willful negligence on our part, be liable or responsible for any loss, costs, damages, or expenses incurred or sustained by anyone resulting from any interpretation made by any of our officers, agents or employees. These interpretations are also subject to our general terms and conditions set out in our current Price Schedule.

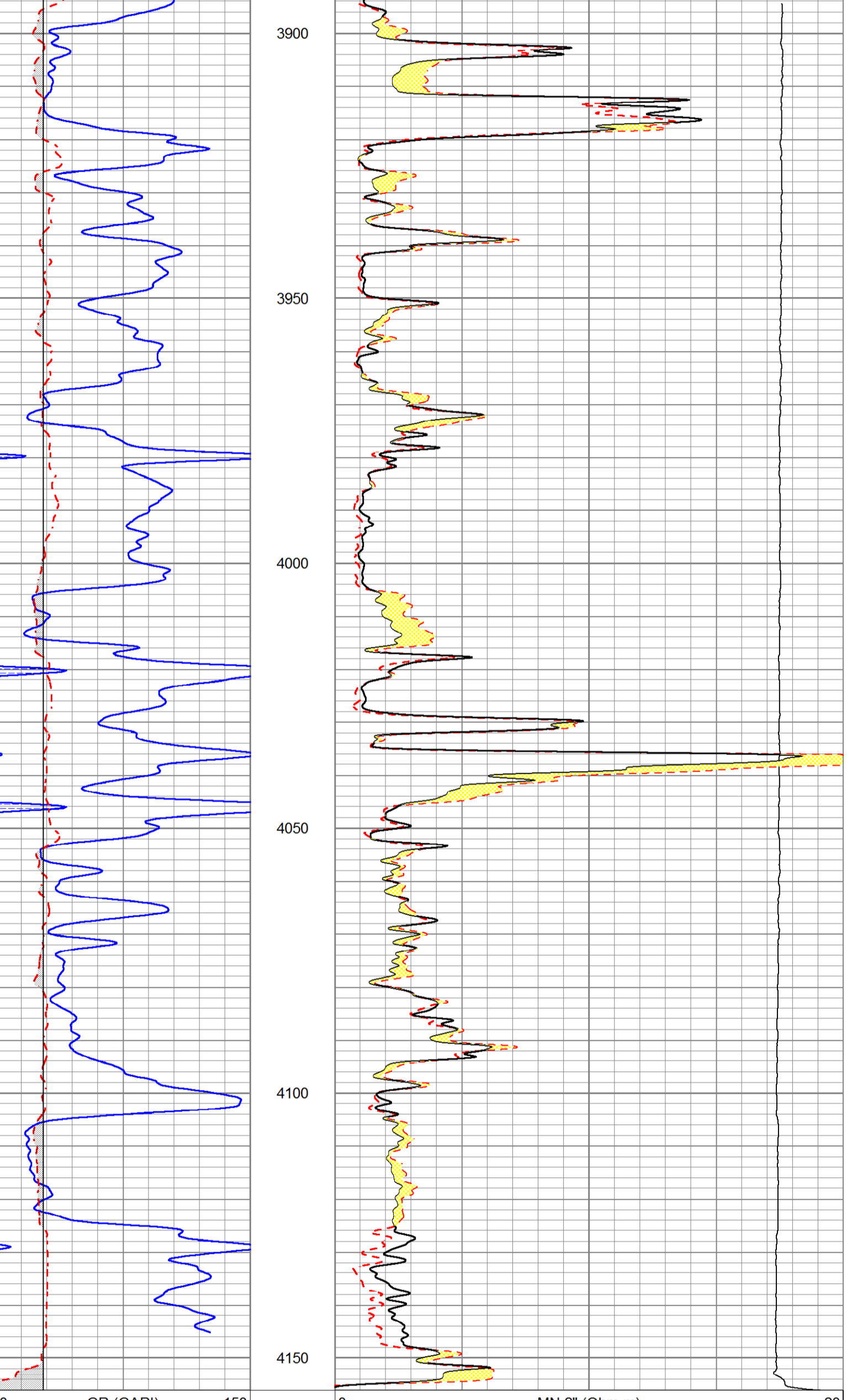
Comments

Thank you for using Gemini Wireline  
785-625-1182

## Main Pass

Database File	crjoan#10h.db
Dataset Pathname	pass6.1
Presentation Format	kml2
Dataset Creation	Sun Feb 17 18:04:10 2013
Charted by	Depth in Feet scaled 1:240

0	GR (GAPI)	150	0	MN 2" (Ohm-m)	20
6	MCAL (in)	16	0	MI 1" (Ohm-m)	20
6	BOREID (in)	16	10000	LTEN (lb)	0



0	GR (GAPI)	150	0	MN 2" (Ohm-m)	20
6	MCAL (in)	16	0	MI 1" (Ohm-m)	20
6	BOREID (in)	16	10000	LTEN (lb)	0

### Calibration Report

Database File	crjoan#10h.db
Dataset Pathname	pass6
Dataset Creation	Sun Feb 17 17:13:21 2013

Microlog Calibration Report									
Serial-Model:		012-Pengo							
Performed:		Sun Feb 17 16:57:19 2013							
Readings			References			Results			
	Zero	Cal		Zero	Cal		m	b	
Normal	0.0054	0.4358	V	0.0000	10.0000	Ohm-m	23.2348	-0.1252	
Inverse	0.0063	0.5619	V	0.0000	8.0000	Ohm-m	14.3988	-0.0910	
Caliper	3.2460	6.8378	V	8.6000	15.0000	in	1.7818	2.8163	

Gamma Ray Calibration Report									
Serial Number:		2000							
Tool Model:		P2000							
Performed:		Sun Feb 17 16:51:47 2013							
Calibrator Value:		1.0	GAPI						
Background Reading:		0.0	cps						
Calibrator Reading:		1.0	cps						
Sensitivity:		0.2200	GAPI/cps						

Sensor	Offset (ft)	Schematic	Description	Length (ft)	O.D. (in)	Weight (lb)
GR	8.38		GR-P2000 (2000)	3.67	3.25	40.00
MCAL	1.30		ML-Pengo (012)	6.97	3.50	100.00
MI	1.30					
MN	1.30					

Dataset: crjoan#10h.db: field/well/run1/pass6  
 Total length: 10.63 ft  
 Total weight: 140.00 lb  
 O.D.: 3.50 in