

# HALLIBURTON

## AHV 5.5 INCH CASING

COMPANY	BEREXCO INC.		
WELL	WELLINGTON KGS #1-32		
FIELD	WELLINGTON		
COUNTY	SUMNER		
STATE	KANSAS		
COMPANY	BEREXCO INC.	WELL	WELLINGTON KGS #1-32
FIELD	WELLINGTON	COUNTY	SUMNER
STATE	KANSAS	Location	955' FNL & 877' FEL
API No.	15-191-22591	Other Services:	DSN/SDL MICRO CSNG GEM WSTT XRMI MRIL
Sect.	32	Twp.	31S
Rge.	1W	Elev.	1259.0 ft
GROUND LEVEL	KELLY BUSHING	Elev. 13.0 ft above perm. Datum	D.F.
Log measured from	KELLY BUSHING	G.L.	1259.0 ft
Drilling measured from			

Date	09-Feb-11	Run No.	2
Depth - Driller	5240.00 ft	Depth - Logger	5240.0 ft
Bottom - Logged Interval	5231.0 ft	Top - Logged Interval	607.0 ft
Casing - Driller	9.625 in	Casing - Logger	607.0 ft
Bit Size	7.875 in	Type Fluid in Hole	WATER BASED MUD
Density	9.0 ppg	Viscosity	48.00 s/qt
PH	10.00 pH	Fluid Loss	9.2 cpm
Source of Sample	FLOW LINE	Rm @ Meas. Temperature	0.650 ohmm @ 58.00 degF
Rmf @ Meas. Temperature	0.55 ohmm @ 58.00 degF	Rmc @ Meas. Temperature	0.750 ohmm @ 58.00 degF
Source Rmf	MEAS	Rmc	MEAS
Rm @ BHT	0.26 ohmm @	Rmf @ BHT	
Time Since Circulation	4.0 hr	Time on Bottom	09-Feb-11 04:46
Max. Rec. Temperature		Equipment Location	10546696 @ LIBERAL
Recorded By	J. BOSCH	Witnessed By	L. WATNEY

Fold here

Service Ticket No.: 7942786      API Serial No.: 15-191-22591      PGM Version: WL INSITE R3.2.0 (Build 7)

CHANGE IN MUD TYPE OR ADDITIONAL SAMPLE				RESISTIVITY SCALE CHANGES			
Date	Sample No.			Type Log	Depth	Scale Up Hole	Scale Down Hole
Type Fluid in Hole							
Density	Viscosity						
Ph	Fluid Loss						
Source of Sample				RESISTIVITY EQUIPMENT DATA			
Rm @ Meas. Temp	@	@		Run No.	Tool Type & No.	Pad Type	Tool Pos.
Rmf @ Meas. Temp.	@	@		TWO	ACRT S8385	N/A	1.5" S.O.
Rmc @ Meas. Temp.	@	@					
Source Rmf	Rmc						
Rm @ BHT	@	@					
Rmf @ BHT	@	@					
Rmc @ BHT	@	@					
EQUIPMENT DATA							
GAMMA		ACOUSTIC		DENSITY		NEUTRON	
Run No.	TWO	Run No.		Run No.		Run No.	
Serial No.	11039640	Serial No.		Serial No.		Serial No.	
Model No.	GTET	Model No.		Model No.		Model No.	
Diameter	3.625	No. of Cent.		Diameter		Diameter	
Detector Model No.	T-102	Spacing		Log Type		Log Type	
Type	SCINT			Source Type		Source Type	
Length	8"	LSA [Y/N]		Serial No.		Serial No.	
Distance to Source	10'	FWDA [Y/N]		Strength		Strength	
LOGGING DATA							
GENERAL		GAMMA		ACOUSTIC		DENSITY	

Run No.	GENERAL		Speed ft/min	GAMMA		ACOUSTIC		Matrix	DENSITY		Matrix	NEUTRON	
	Depth			Scale		Scale			Scale				
	From	To		L	R	L	R		L	R		L	R
TWO	607	5239	REC	0	150								

**DIRECTIONAL INFORMATION**

Maximum Deviation @ KOP @

Remarks: ANNULAR HOLE VOLUME CALCULATED FOR 5.5 INCH CASING

CHLORIDES: 11,000 PPM LCM: 10 LB/BBL

GPS COORDINATES: LAT: 37.30 N LONG: 97.43 W

GTET/CSNG/GEM/DSN/SDL/ACRT RAN IN COMBINATION

TODAY'S CREW: K. KELLY, K. KING

THANK YOU FOR CHOOSING HALLIBURTON ENERGY SERVICES, LIBERAL, KS 620-624-8123

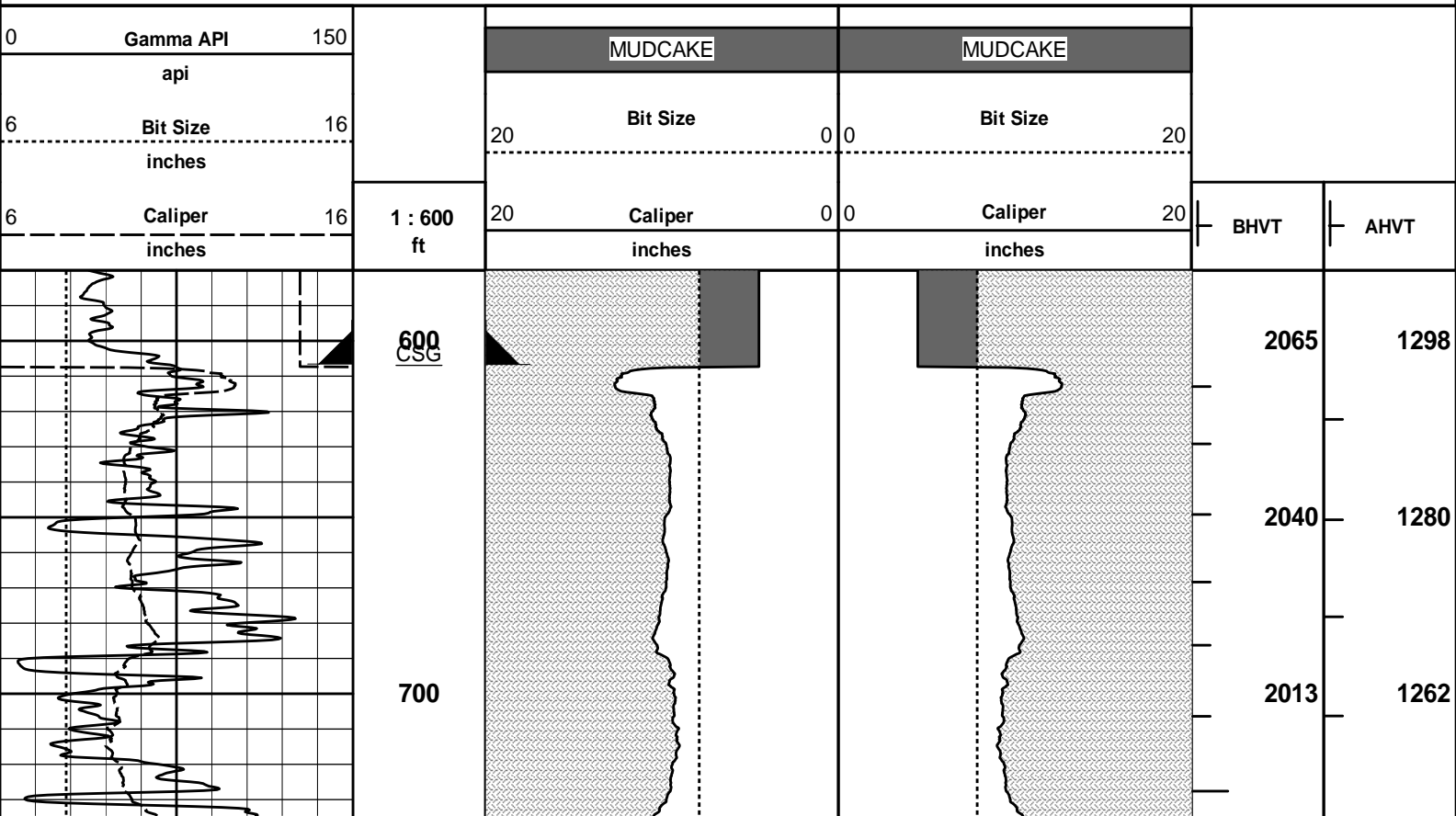
HALLIBURTON DOES NOT GUARANTEE THE ACCURACY OF ANY INTERPRETATION OF THE LOG DATA, CONVERSION OF LOG DATA TO PHYSICAL ROCK PARAMETERS OR RECOMMENDATIONS WHICH MAY BE GIVEN BY HALLIBURTON PERSONNEL OR WHICH APPEAR ON THE LOG OR IN ANY OTHER FORM. ANY USER OF SUCH DATA, INTERPRETATIONS, CONVERSIONS, OR RECOMMENDATIONS AGREES THAT HALLIBURTON IS NOT RESPONSIBLE EXCEPT WHERE DUE TO GROSS NEGLIGENCE OR WILLFUL MISCONDUCT, FOR ANY LOSS, DAMAGES, OR EXPENSES RESULTING FROM THE USE THEREOF.

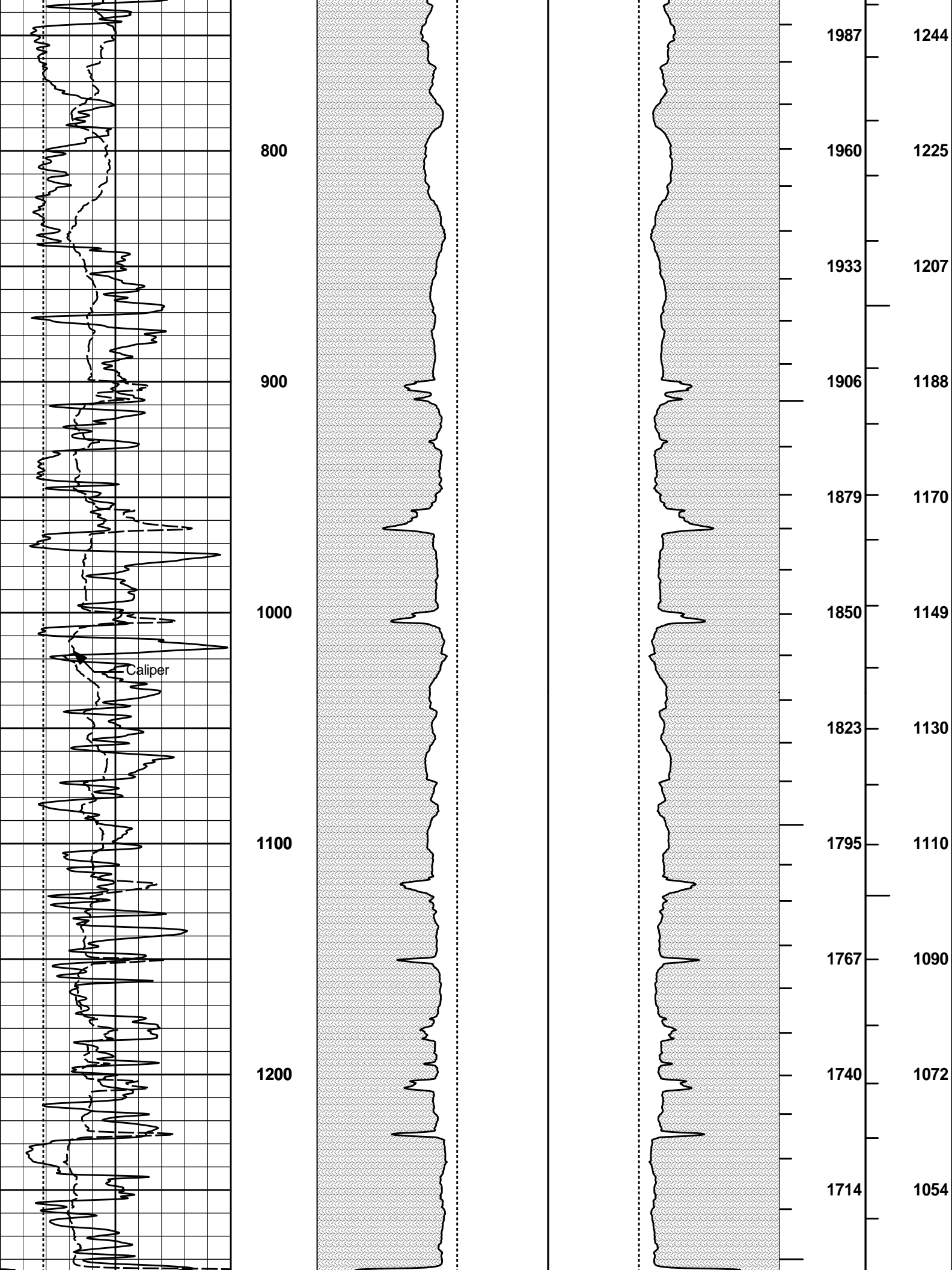
HALLIBURTON

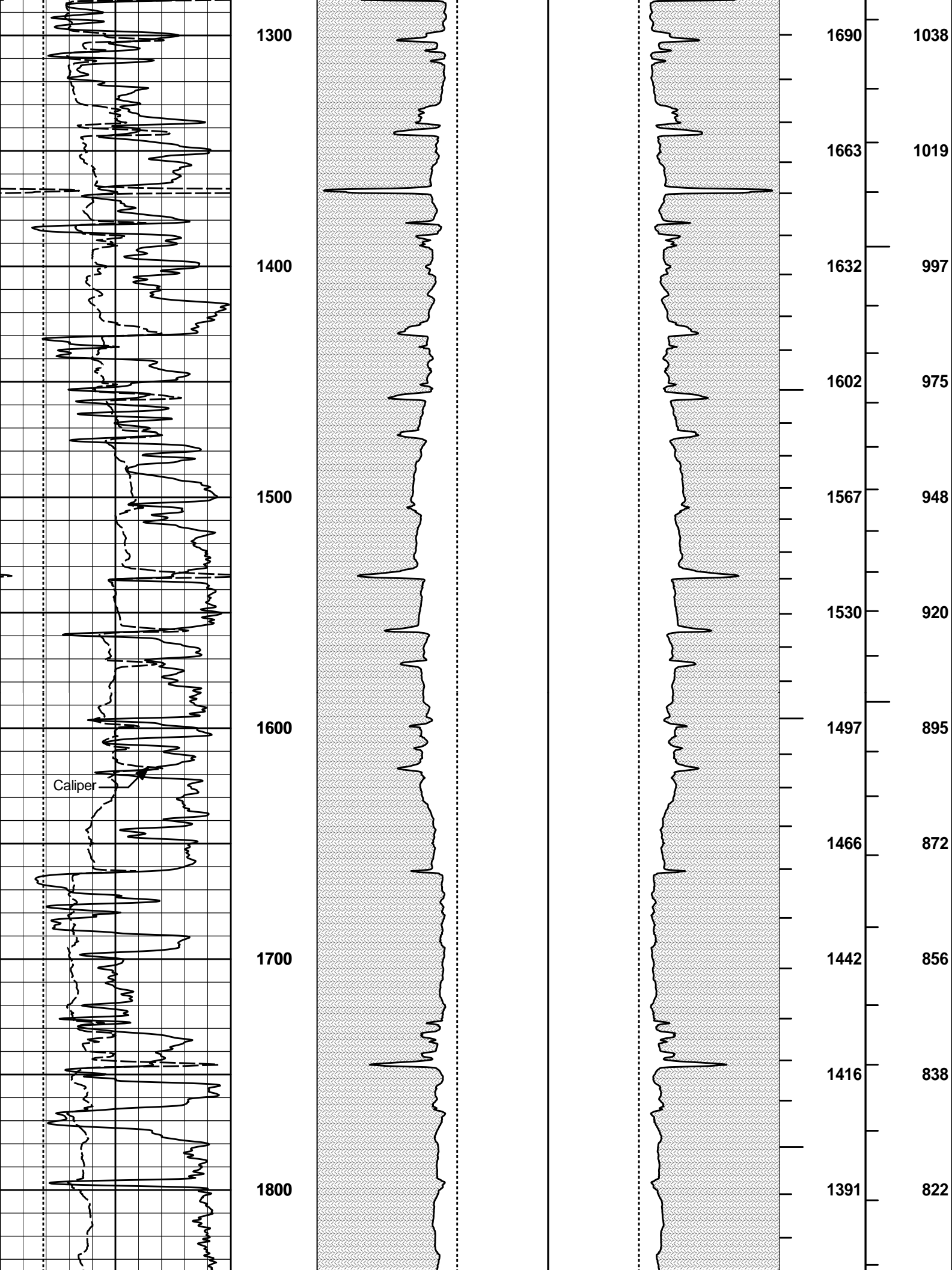


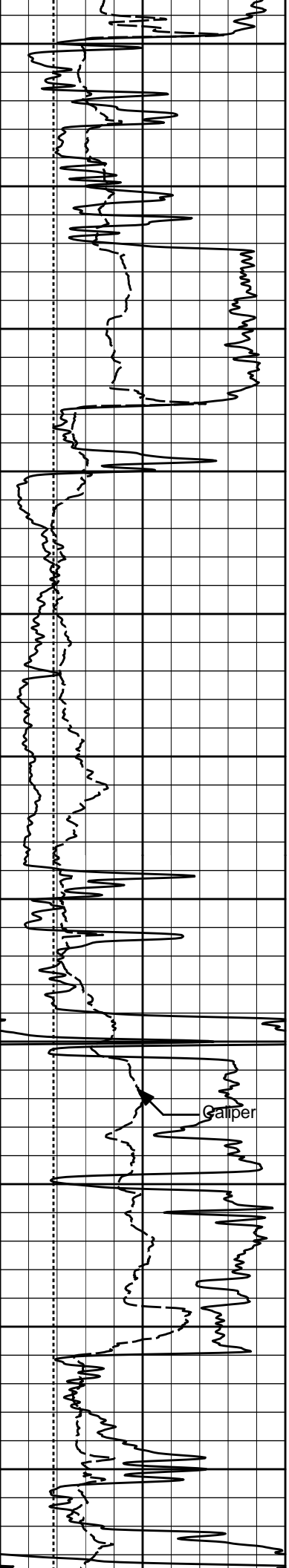
Plot Time: 09-Feb-11 14:47:21  
 Plot Range: 580 ft to 5247.75 ft  
 Data: WELINGTN\_KGS\_R2\Well Based\DAQ-0001-002\  
 Plot File: \\-LOCAL-WELINGTN\_KGS\_R2\Well Based\AHV\AHV\_2\_IQ\_LIB

## ANNULAR HOLE VOLUME PLOT









1900

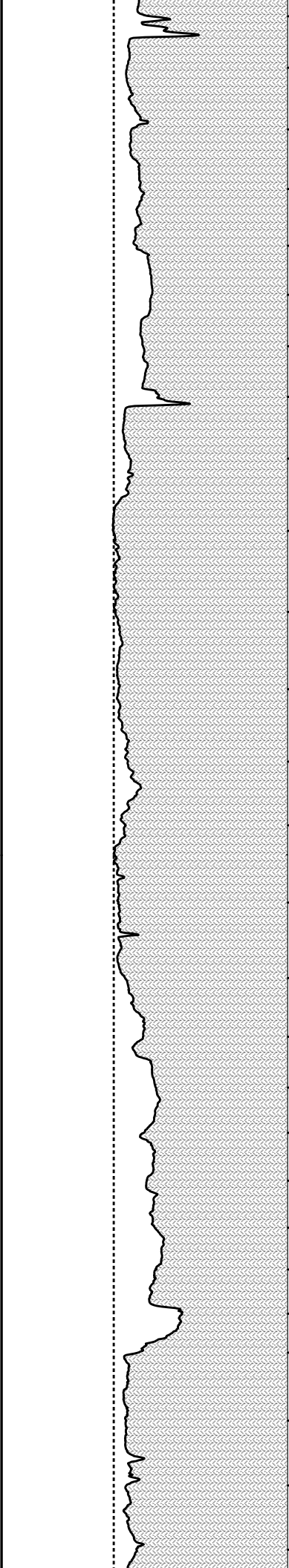
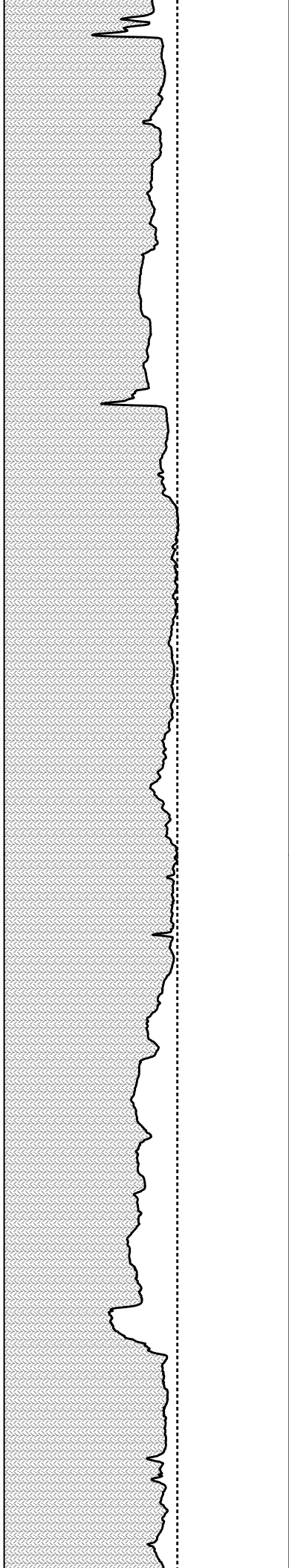
2000

2100

2200

2300

Galper



1364

1341

1313

1288

1270

1251

1230

1209

1179

1146

1123

803

788

769

752

742

731

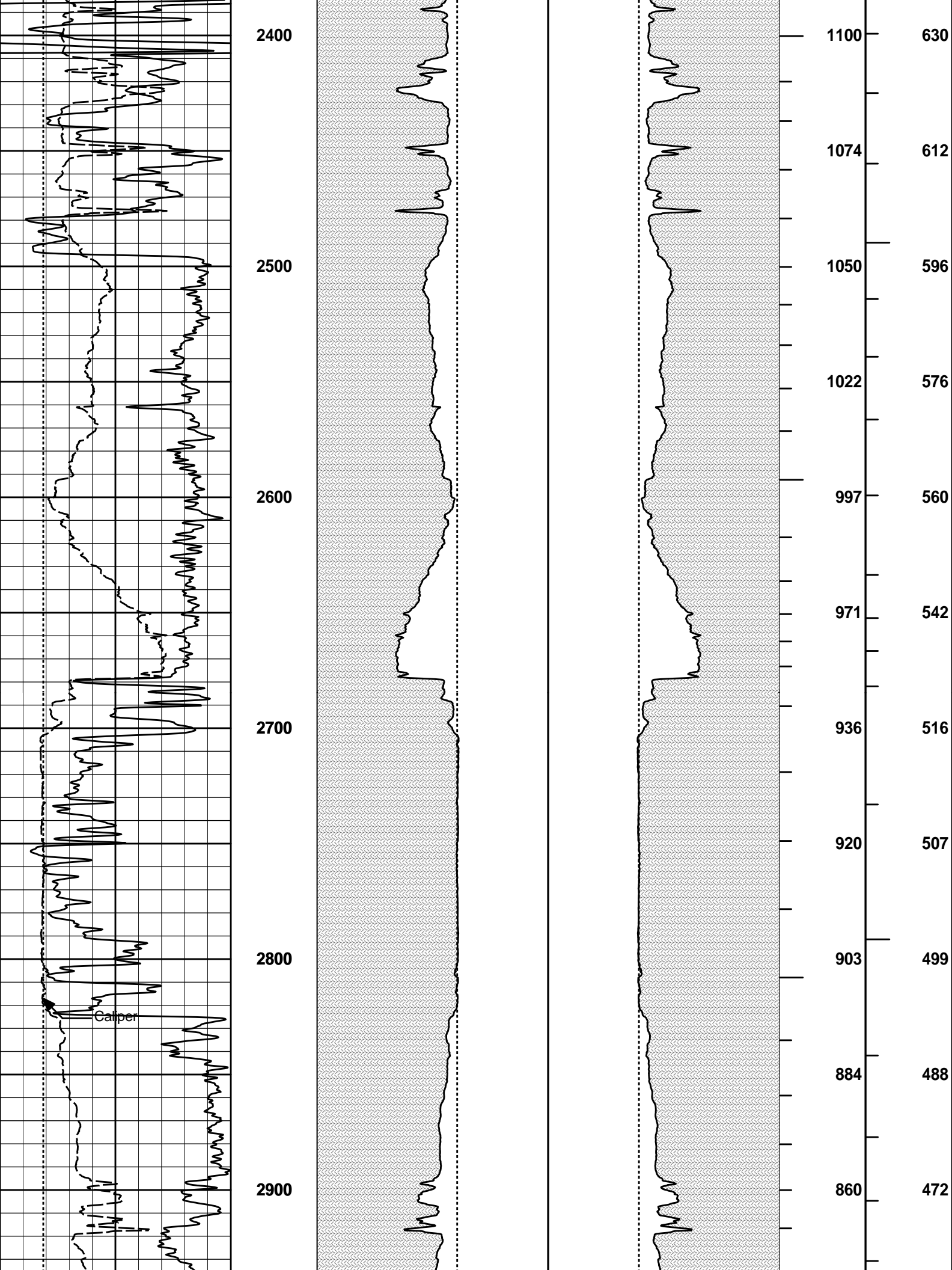
719

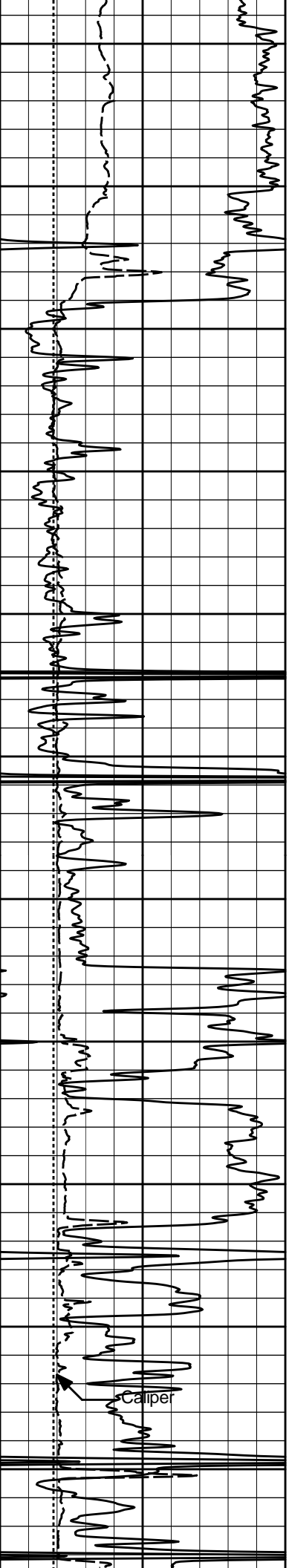
706

684

659

644





3000

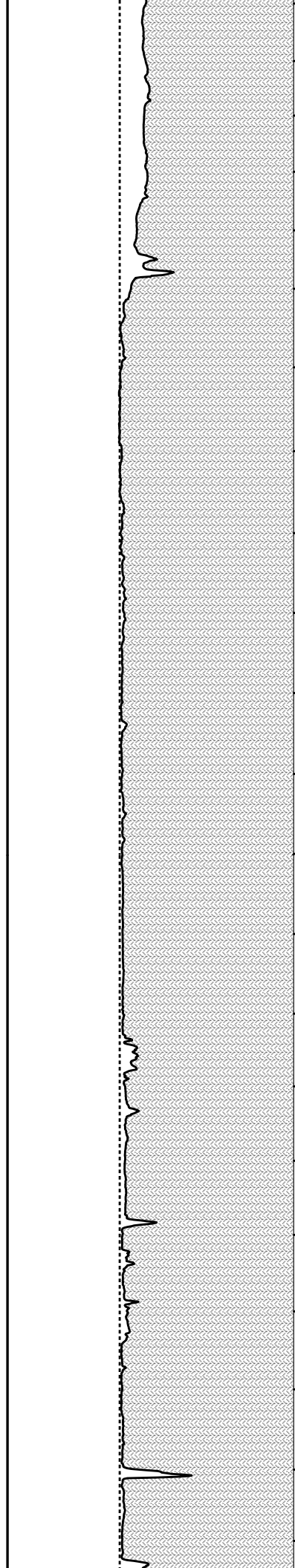
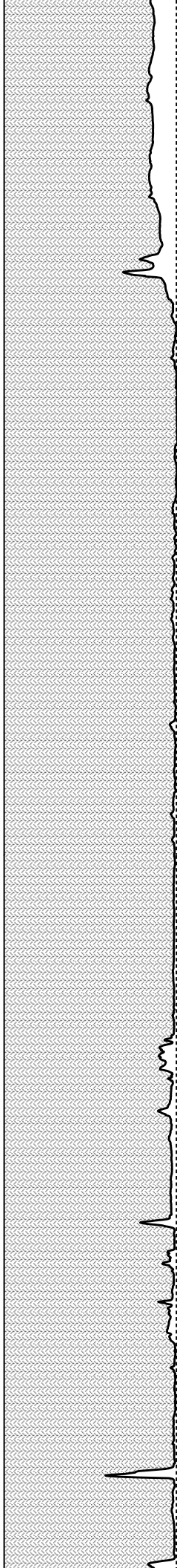
3100

3200

3300

3400

Caliper



833

807

785

768

750

732

714

696

677

658

640

454

436

422

413

404

394

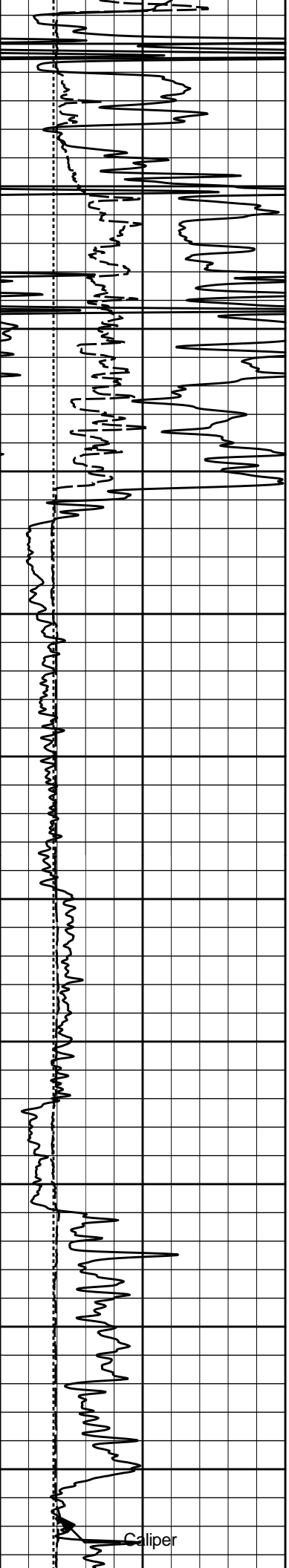
385

375

364

353

343



3500

3600

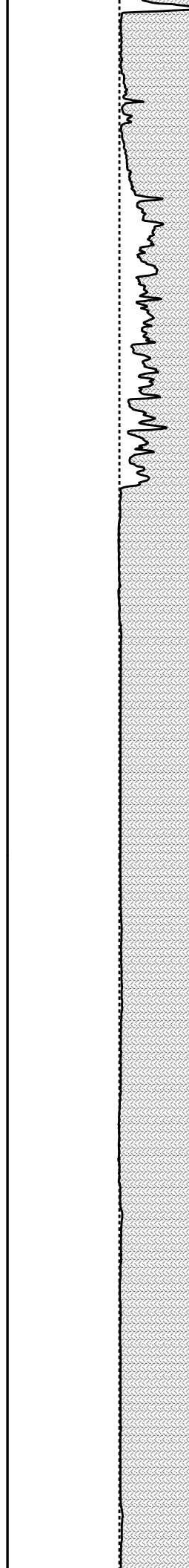
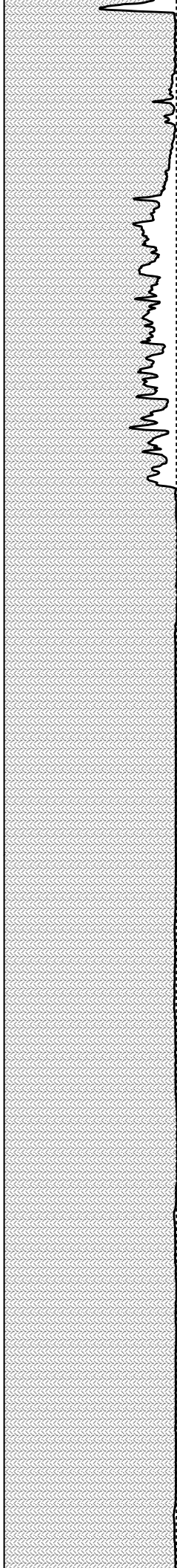
3700

3800

3900

4000

Caliper



619

601

575

550

532

515

498

480

463

446

429

331

320

303

286

277

268

259

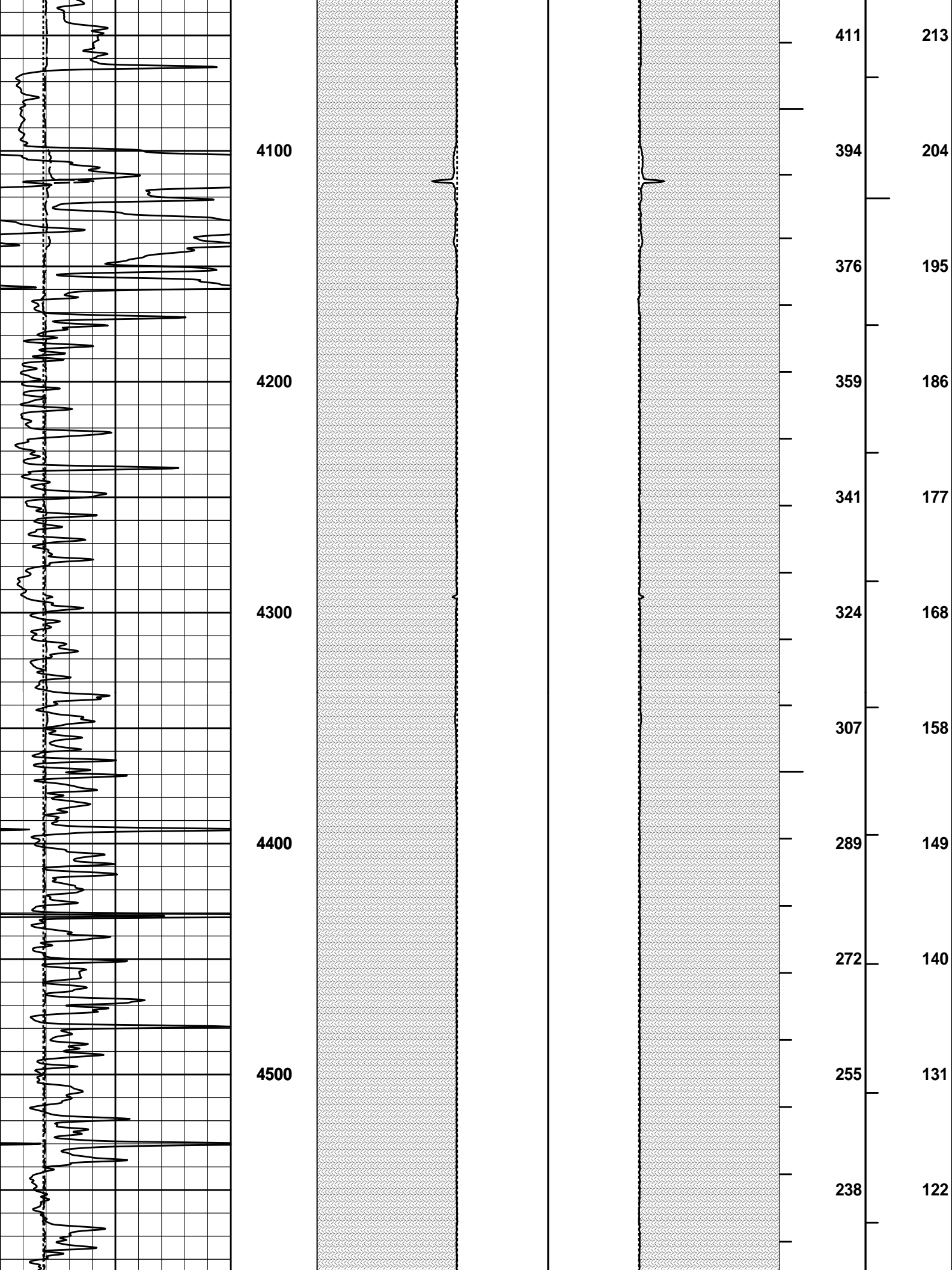
249

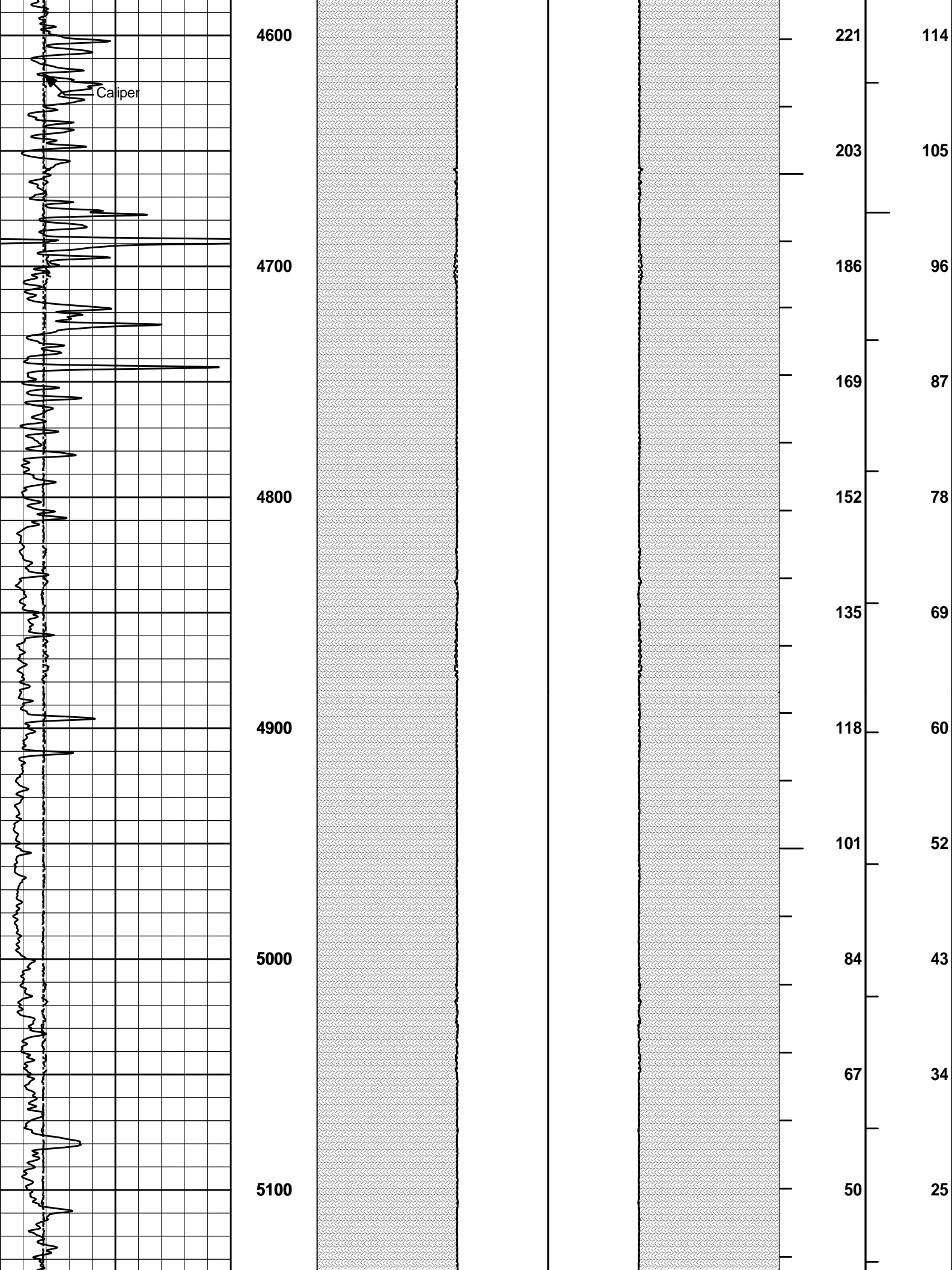
241

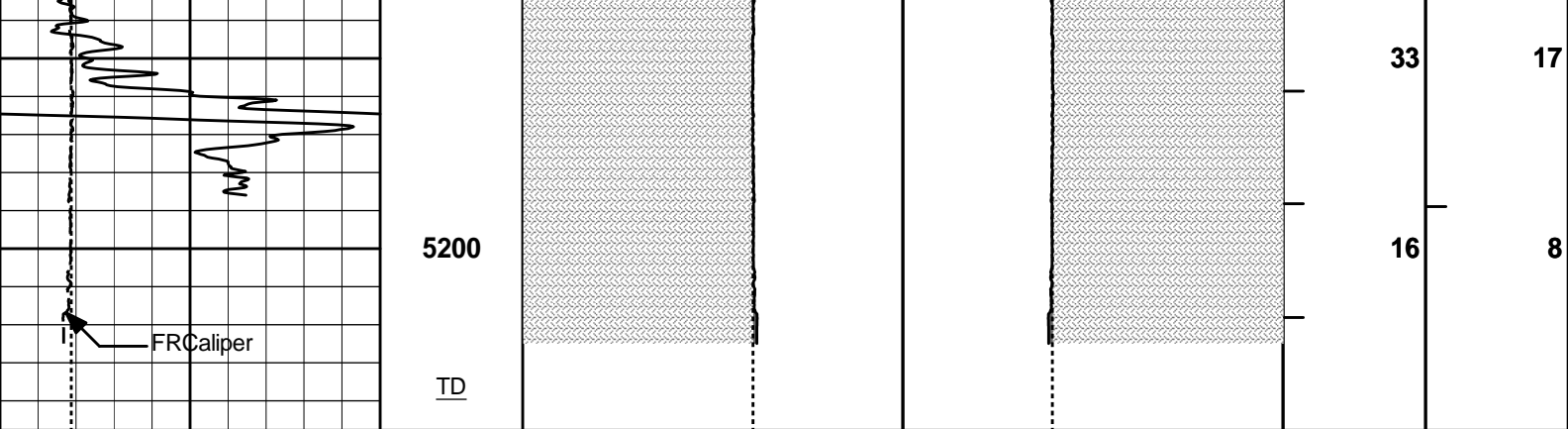
232

223









6	Caliper inches	16	1 : 600 ft	20	Caliper inches	0 0	20	BHVT	AHVT
6	Bit Size inches	16		20	Bit Size inches	0 0	20		
0	Gamma API api	150		MUDCAKE		MUDCAKE			

**HALLIBURTON**

Plot Time: 09-Feb-11 14:47:33  
 Plot Range: 580 ft to 5247.75 ft  
 Data: WELINGTN\_KGS\_R2\Well Based\DAQ-0001-002\  
 Plot File: \\-LOCAL-WELINGTN\_KGS\_R2\Well Based\AHV\AHV\_2\_IQ\_LIB

**ANNULAR HOLE VOLUME PLOT**

COMPANY	BEREXCO INC.		
WELL	WELLINGTON KGS #1-32		
FIELD	WELLINGTON		
COUNTY	SUMNER	STATE	KANSAS

**HALLIBURTON**

AHV  
5.5 INCH CASING