



DIGITAL LOG (785) 625-3858

Borehole Compensated
Sonic Log

API No. 15-191-22,591-00-00

Company **Berexco, LLC.**
Well **Wellington KGS No. 1-32**
Field **Wellington**
County **Sumner** State **Kansas**

Location **SW NE NE**
995' FNL & 877' FEL

Sec: **32** Twp: **31 S** Rge: **1 W**

Other Services
NONE

Permanent Datum **Ground Level** Elevation **1259**
Log Measured From **Kelly Bushing** **13 Ft. Above Perm. Datum**
Drilling Measured From **Kelly Bushing**

K.B. 1272
D.F. 1259
G.L. 1259

Date **1/03/2011**

Run Number **One**

Type Log **BHC Sonic**

Depth Driller **613**

Depth Logger **612**

Bottom Logged Interval **608**

Top Logged Interval **0**

Type Fluid In Hole **Water**

Salinity, PPM CL **350**

Density **9.2**

Level **Full**

Max. Rec. Temp. F **84**

Operating Rig Time **2 Hours**

Equipment -- Location **4 Days**

Recorded By **K. Bange**

Witnessed By **Gilbert Davilla**

Borehole Record				Casing Record			
Run No.	Bit	From	To	Size	Wgt.	From	To
One	17.5	0	126	13.375	N/A	0	126
Two	12.25	126	TD				

<<< Fold Here >>>

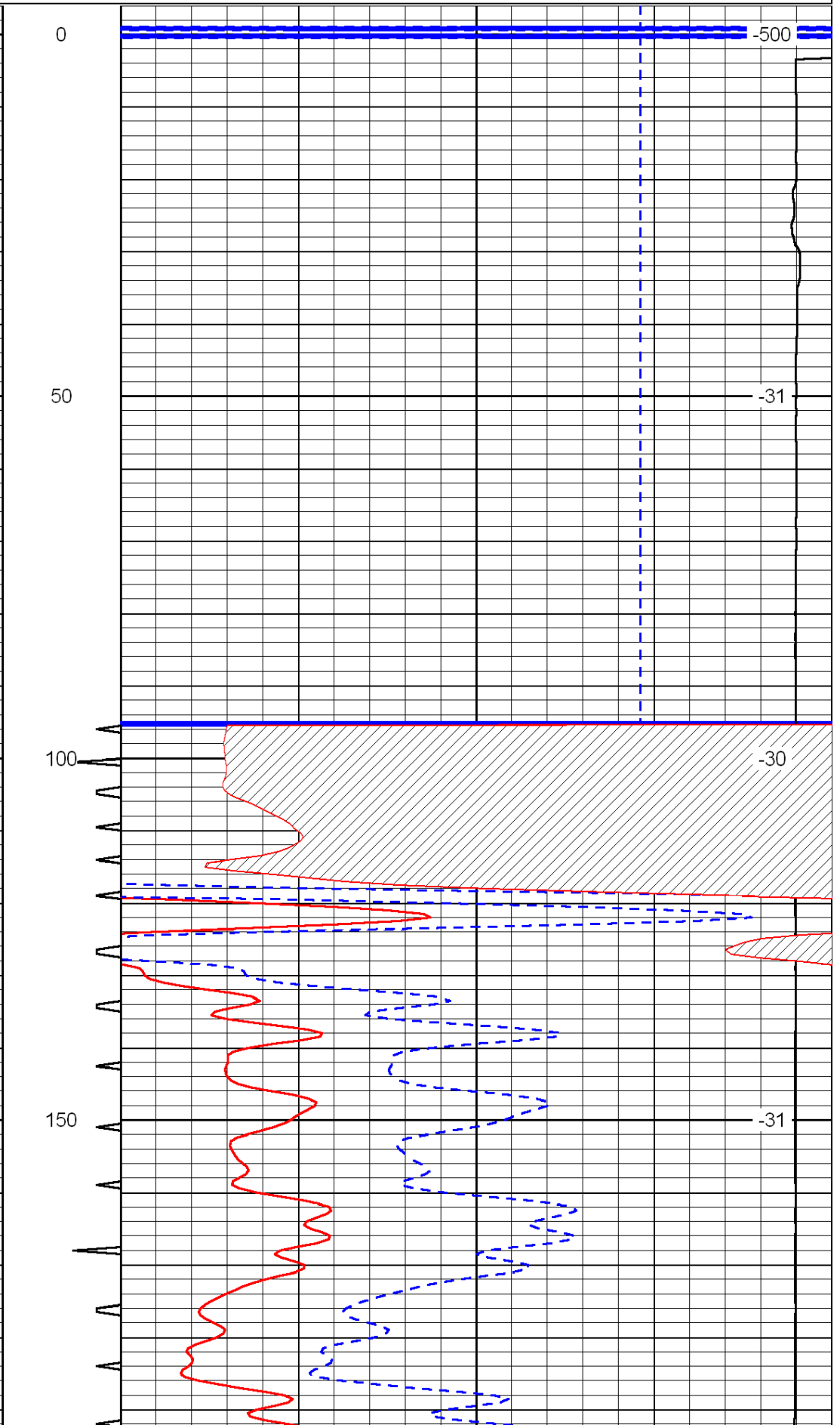
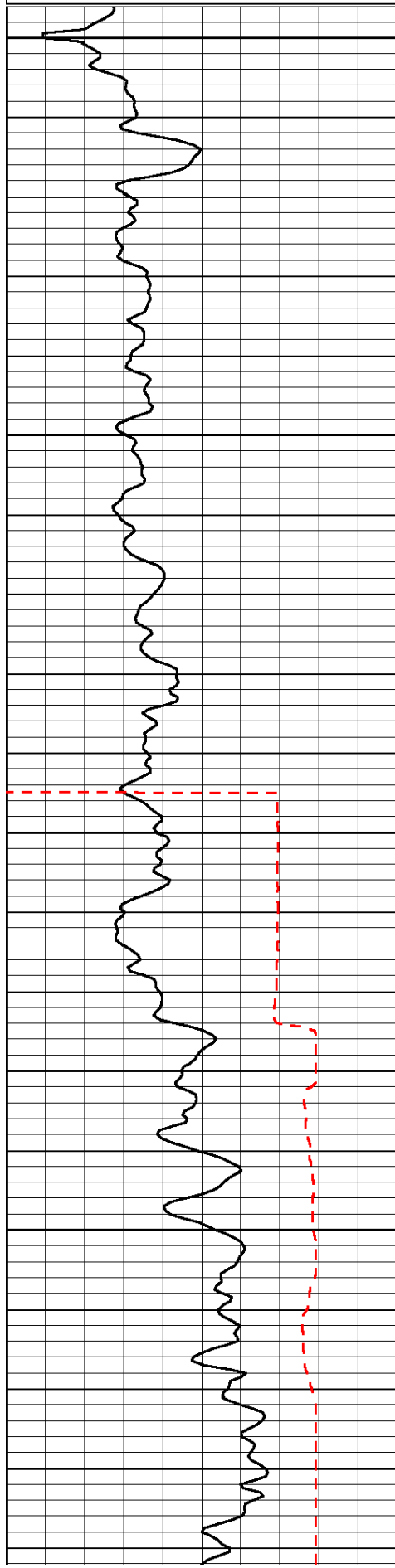
All interpretations are opinions based on inferences from electrical or other measurements and we cannot and do not guarantee the accuracy or correctness of any interpretation, and we shall not, except in the case of gross or willful negligence on our part, be liable or responsible for any loss, costs, damages, or expenses incurred or sustained by anyone resulting from any interpretation made by any of our officers, agents or employees. These interpretations are also subject to our general terms and conditions set out in our current Price Schedule.

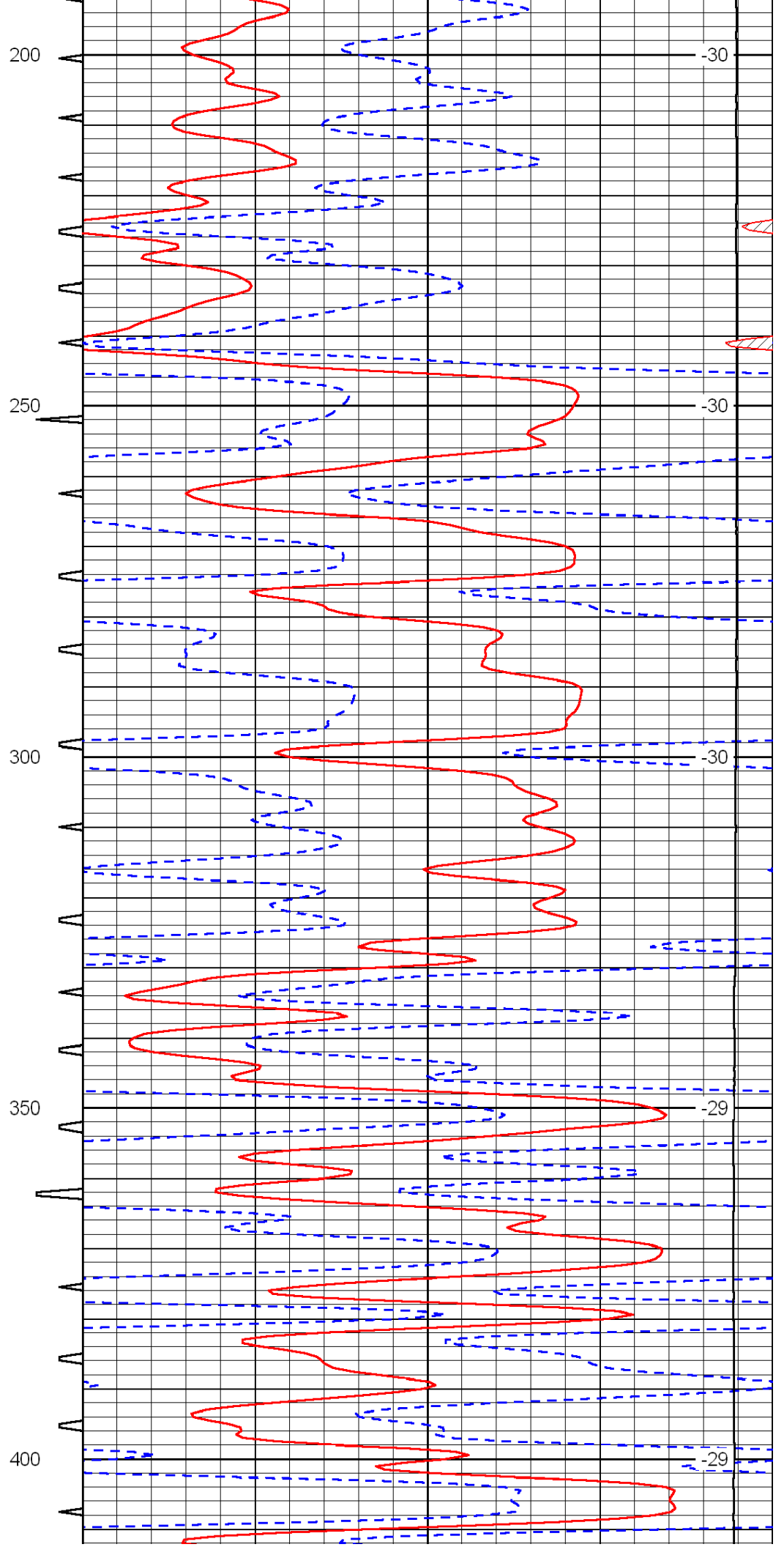
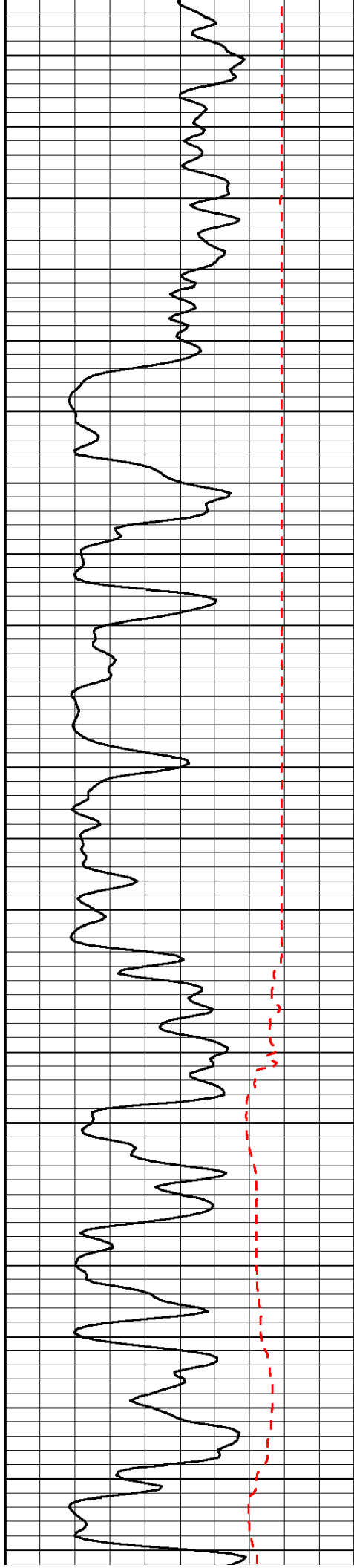
Comments

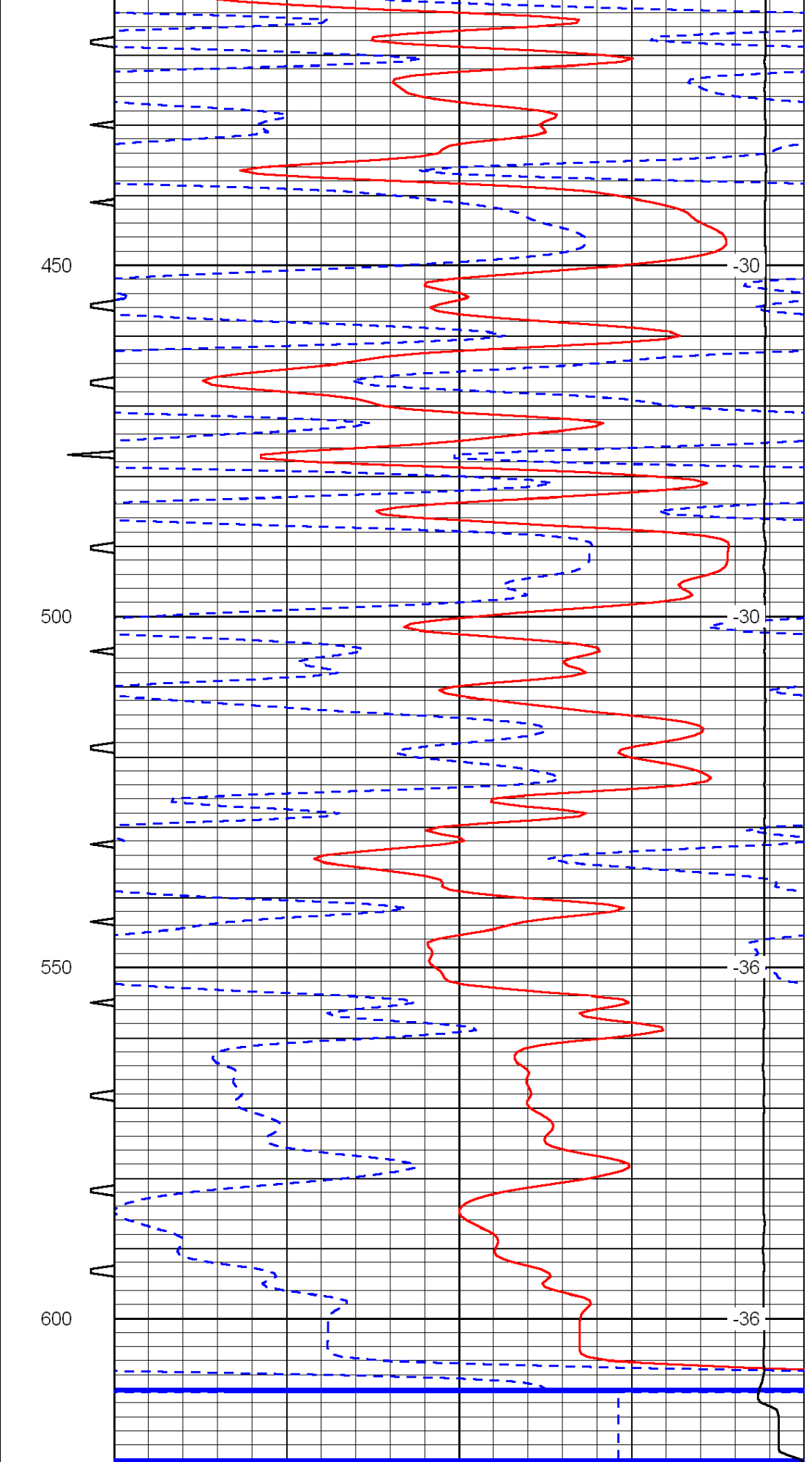
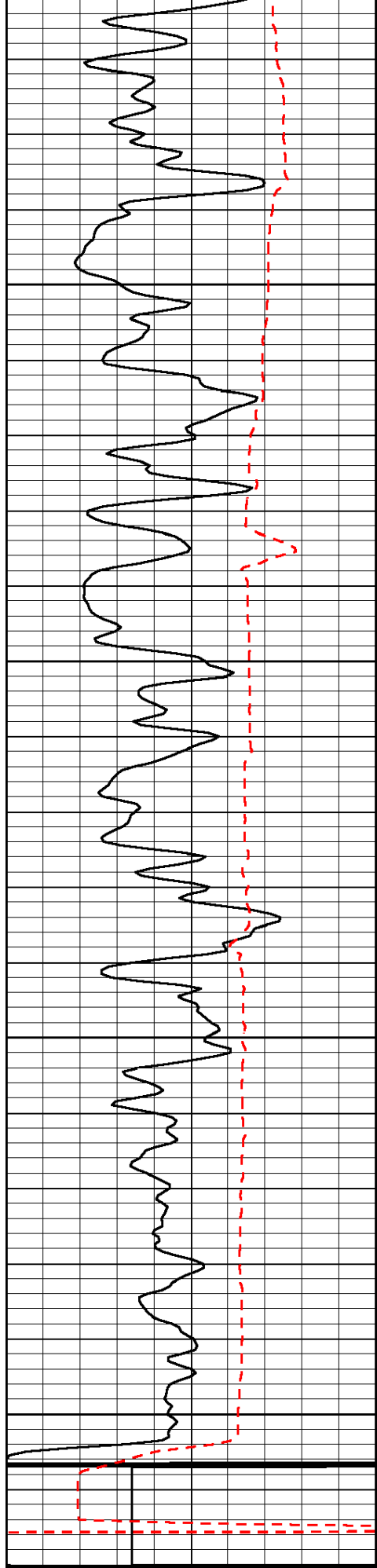
Thank you for using Log-Tech, Inc.
(785) 625-3858

Wellington, 6 W to Anson rd, 3 N to 40 rd, 4 3/4 E, S into

0	Gamma Ray	150	Sonic Int	140	Delta Time (usec/ft)	40
150	Gamma Ray	300	5	0	30	SPOR
6	scal (GAPI)	16		15000	LTEN (lb)	0
						LSPD







0	Gamma Ray	150	Sonic Int	140	Delta Time (usec/ft)	40
150	Gamma Ray	300	5	0	SPOR	-10
6	SPOR	10	15000	15000	LTEN (ft)	0

6

scal (GAP1)

16

15000

LTEN (10)

0

LSPD