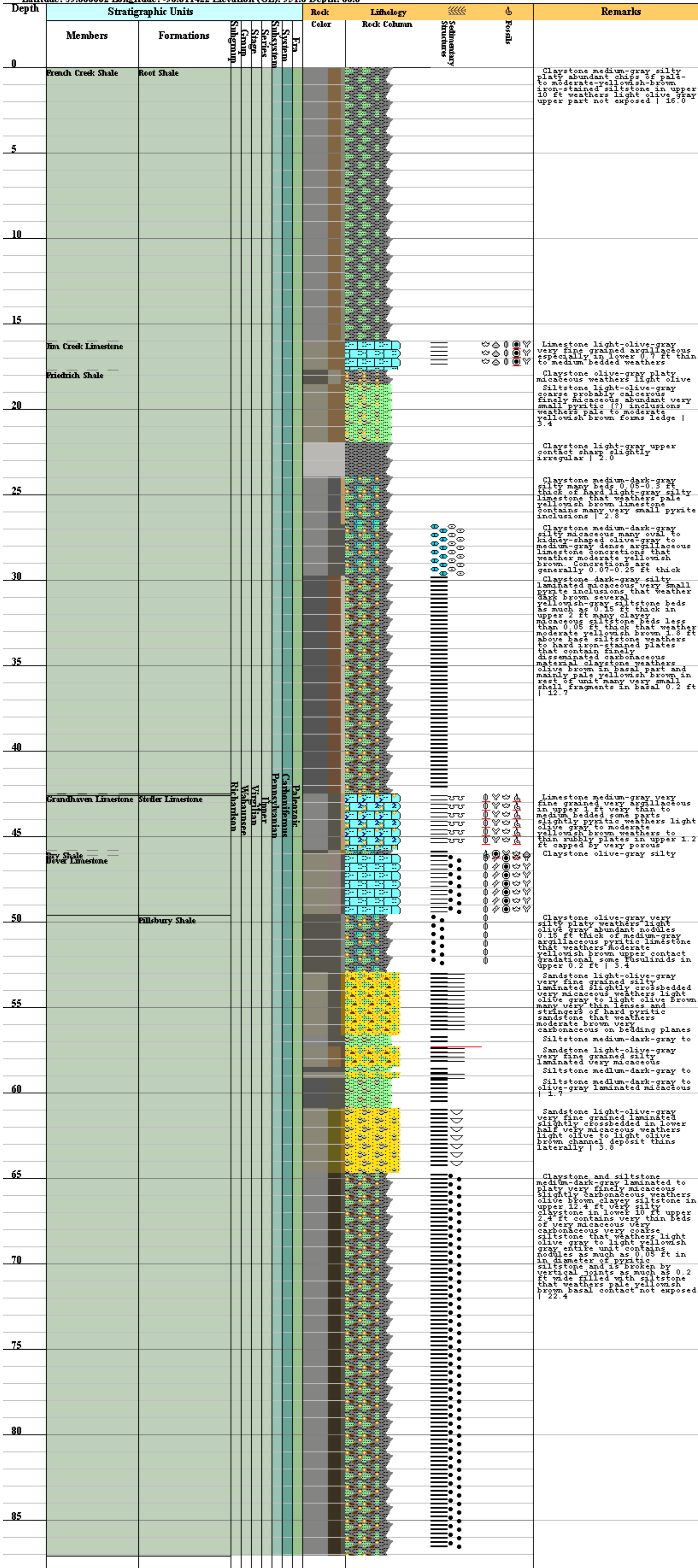


8. Upper part of the French Creek Shale Member of the Root Shale down into the Pillsbury Shale T: 11S R: 13E S: 30  
 Latitude: 39.066002 Longitude: -96.011422 Elevation (GL): 951.0 Depth: 88.0



**Primary Rock Lithology**

- Clay, Claystone
- Silt, Siltstone
- Sand, Sandstone
- Limestone

**Secondary Rock Lithology**

- Clayey, Argillaceous, clay
- Silty, Silt
- Micaceous
- Sandy, sand
- Carbonaceous, Carbonized
- Pyritic, pyrite
- fossiliferous
- Calcareous
- Gypsiferous, gypsum

**Fossils**

- Fresh Water (Fresh Water)
- Brackish Water (Brackish Water)
- Marine (Marine)
- (b) Few
- (a) Many
- (x) Broken
- (b) - Macrofossils
- (x) - Brachiopods
- (y) - Bryozoans
- (o) - Crinoids
- (d) - Pelecypods
- (f) - Algae
- (F) - Larger Foraminifera, or fusulin

**Sedimentary Structure Symbols**

**Depositional Structures**

- Bedding Base
- Abrupt or sharp, planar base of bed
- Lamination
- Parallel Laminations
- Stratification
- Horizontal bedding

**Deformational Structures**

- Load casts
- Nodules
- Concretions, nodules, geodes in general
- Calcareous concretions

**Erosional Structures**

- Concave Bottom and Flat Top