

**SUPPLEMENTARY COLOR FIGURES FOR  
“DIRECT-PUSH HYDROSTRATIGRAPHIC PROFILING:  
COUPLING ELECTRICAL LOGGING AND SLUG TESTS”  
GROUND WATER, VOLUME 43, NO. 1**

Stephen M. Sellwood<sup>1,2</sup>, John M. Healey<sup>1</sup>, Steffen Birk<sup>1,3</sup>, and James J. Butler, Jr. <sup>1,4</sup>

KANSAS GEOLOGICAL OPEN-FILE REPORT 2004-12

MARCH 2004

- 1) – Kansas Geological Survey, 1930 Constant Ave., Campus West, University of Kansas, Lawrence, KS 66047
- 2) – currently at BT<sup>2</sup>, Inc., 2830 Dairy Drive, Madison, Wisconsin 53718
- 3) – currently at Center for Applied Geoscience, University of Tübingen, Sigwartstr. 10, D-72076 Tübingen, Germany
- 4) – Corresponding author

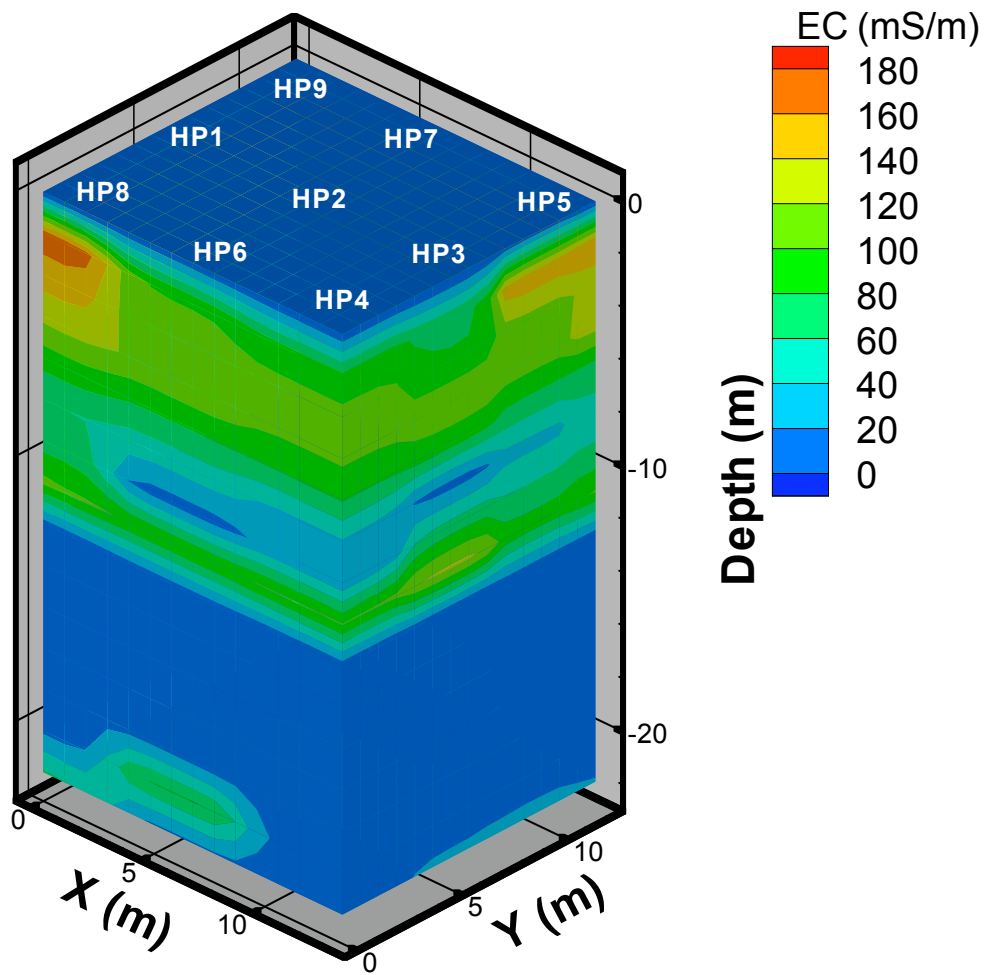


Figure 5a – A three-dimensional image of electrical conductivity at GEMS viewed from the southeast of the profiling grid (approximate surface locations of profiles are marked; origin of grid coordinate system at HP8; interpolation performed with inverse-distance weighting (exponent = -3.5) algorithm in Tecplot (Amtec Engineering 2001); shapes of many of the smaller-scale features are artifacts of the grid spacing and the interpolation algorithm).

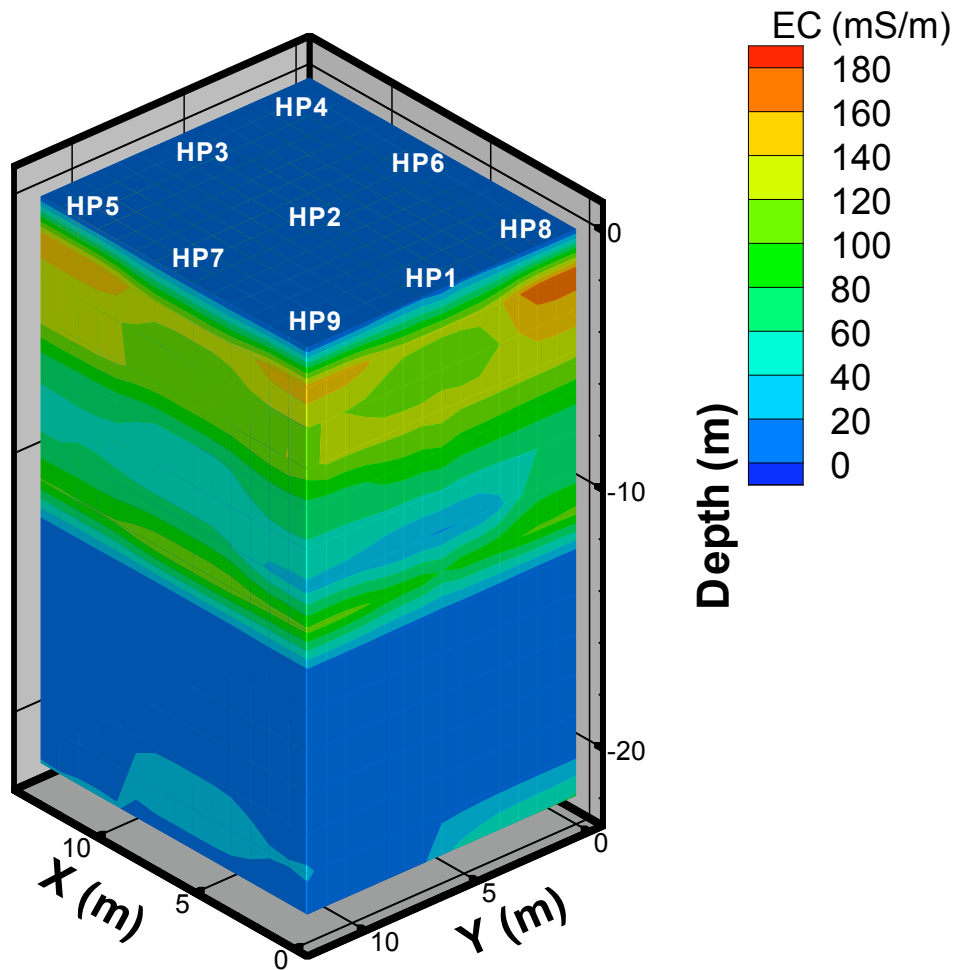


Figure 5b – A three-dimensional image of electrical conductivity at GEMS viewed from the northwest of the profiling grid (approximate surface locations of profiles are marked; origin of grid coordinate system at HP8; interpolation performed with inverse-distance weighting (exponent = -3.5) algorithm in Tecplot (Amtec Engineering 2001); shapes of many of the smaller-scale features are artifacts of the grid spacing and the interpolation algorithm).

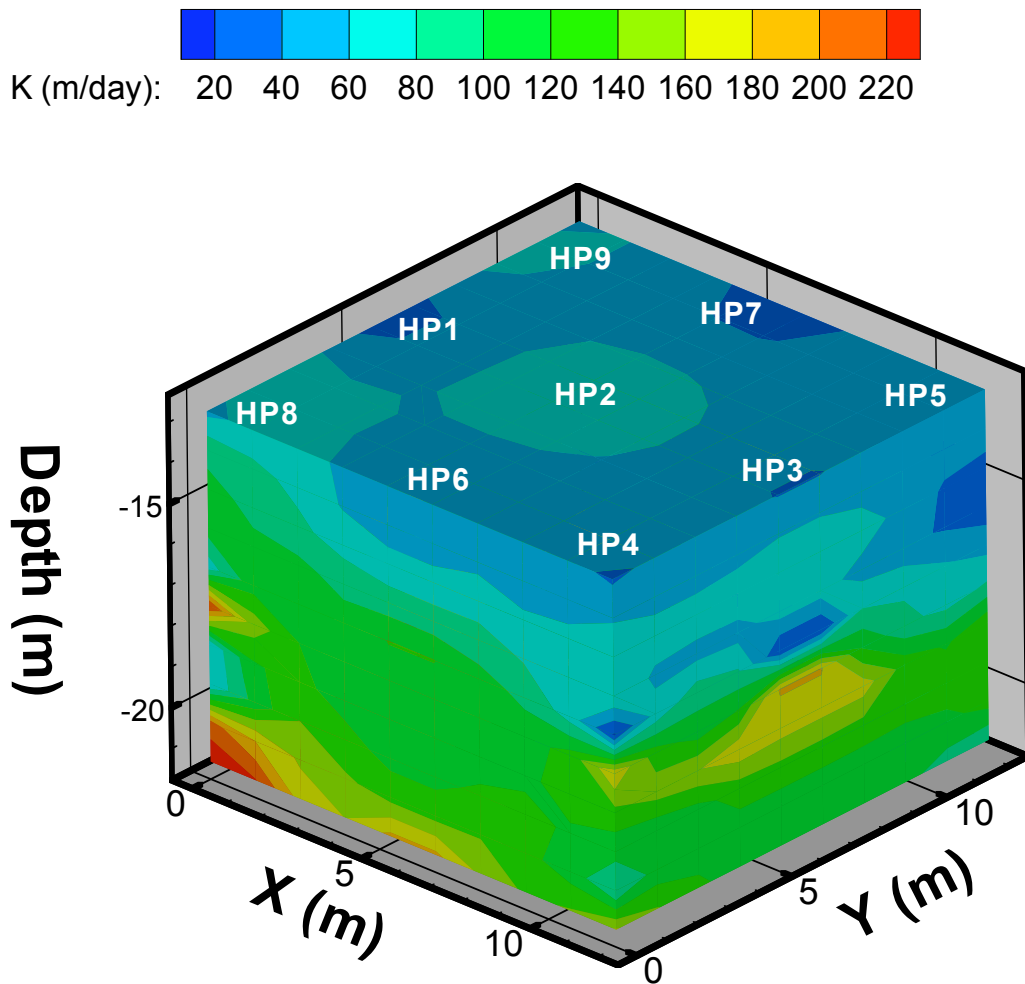


Figure 7a – A three-dimensional image of hydraulic conductivity within the sand and gravel interval at GEMS viewed from the southeast of the profiling grid (approximate surface locations of profiles are marked; origin of grid coordinate system at HP8; interpolation performed with inverse-distance weighting (exponent = -3.5) algorithm in Tecplot (Amtec Engineering 2001); shapes of many of the smaller-scale features are artifacts of the grid spacing and the interpolation algorithm).

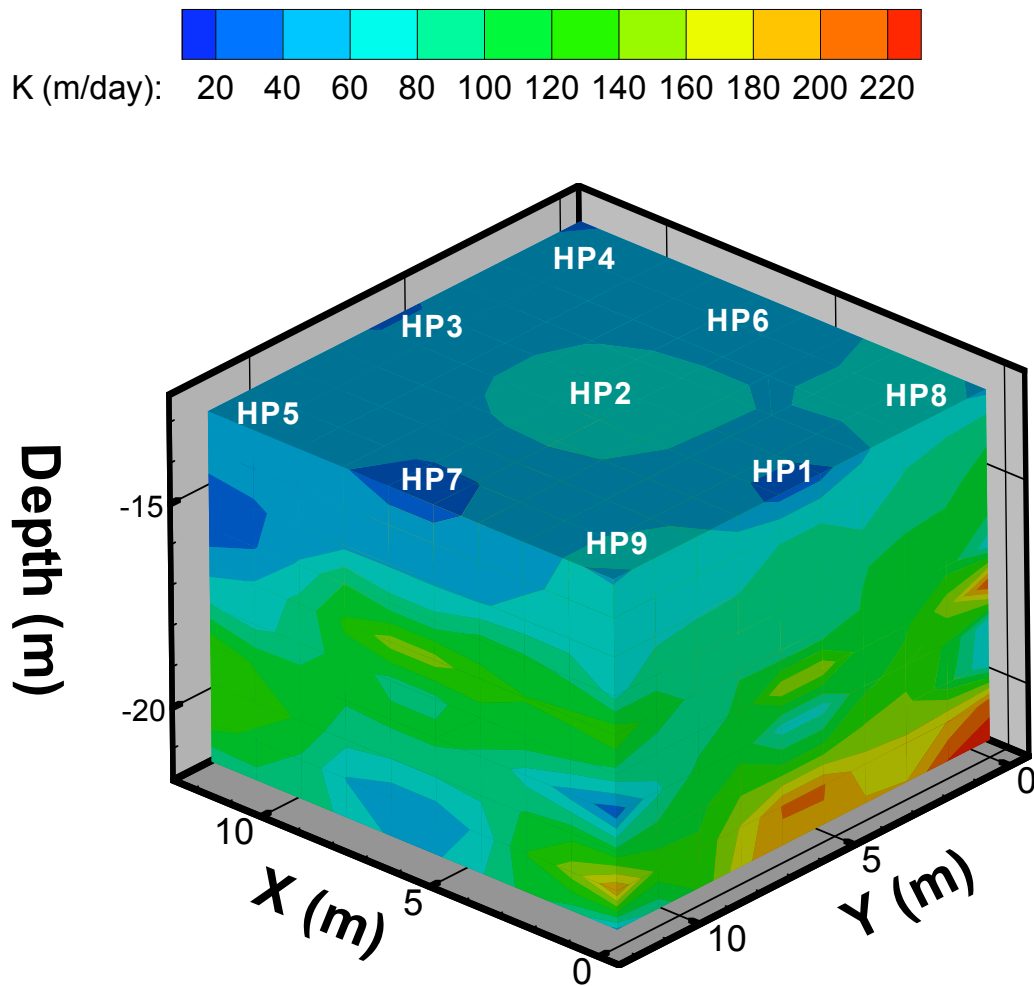


Figure 7b – A three-dimensional image of hydraulic conductivity within the sand and gravel interval at GEMS viewed from the northwest of the profiling grid (approximate surface locations of profiles are marked; origin of grid coordinate system at HP8; interpolation performed with inverse-distance weighting (exponent = -3.5) algorithm in Tecplot (Amtec Engineering 2001); shapes of many of the smaller-scale features are artifacts of the grid spacing and the interpolation algorithm).